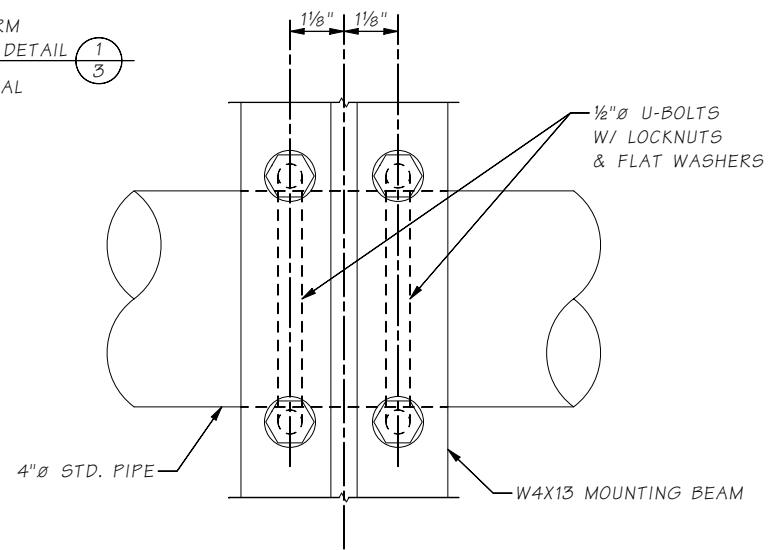
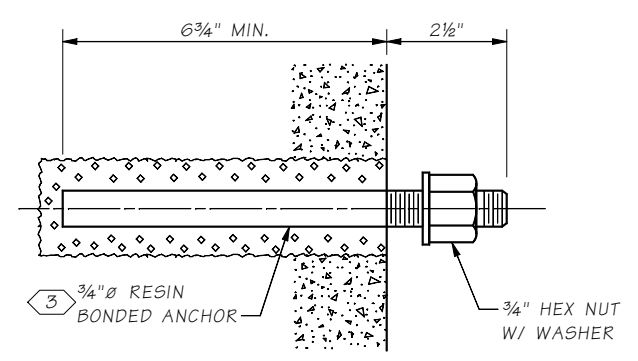


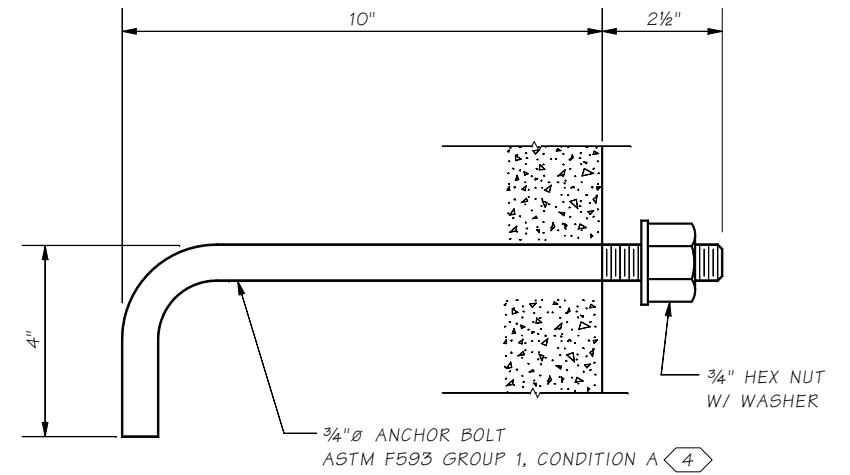
ARCHITECTURAL FINISH TREATMENT



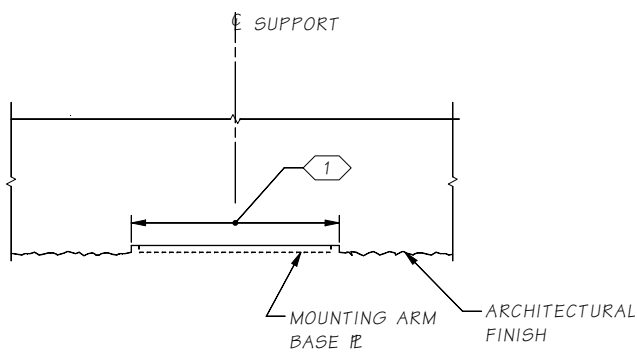
W4X13 CONNECTION DETAIL



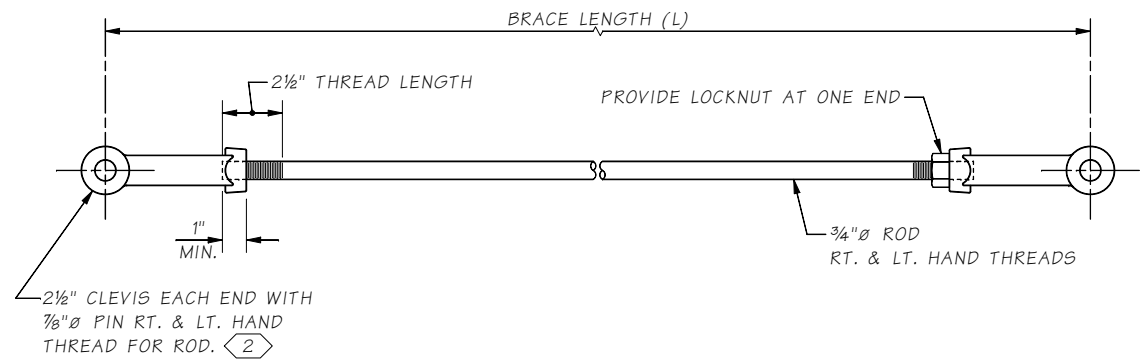
RESIN BONDED ANCHOR DETAIL



ALTERNATE ANCHOR DETAIL



SECTION J



DETAIL 4/2

NOTES:

- 1 CHIP OR BLOCK OUT FACE OF BARRIER FLUSH UNDER BRACKET SUPPORT ARM BASE PLATE. APPLY EPOXY BONDING AGENT TO SURFACE FOR UNIFORM BEARING.
- 2 ANVIL INTERNATIONAL FIG. 299, B LINE FIG. B3201, BERGEN-POWER FIG. 276, PIPELINE TECHNOLOGY & PRODUCTS FIG. 95, OR APPROVED EQUAL.
- 3 INSTALL RESIN BONDED ANCHOR NORMAL TO CONCRETE SURFACE
- 4 INSTALL ANCHOR NORMAL TO CONCRETE SURFACE. FOR NEW CONSTRUCTION ONLY.

LAST REVISED ON: 03/10/2020

1 SHEET dot ON FILE

10.1-A6-5

Bridge Design Engr.	M:\STANDARDS\Bridge Mounted Sign Brackets\5 - BMSB DETAILS 3 OF 3.MAN					REGION NO.	STATE	FED. AID PROJ. NO.	SHEET NO.	TOTAL SHEETS
Supervisor						10	WASH.			
Designed By						JOB NUMBER				
Checked By										
Detailed By										
Bridge Projects Engr.										
Prelim. Plan By										
Architect/Specialist	DATE	REVISION	BY	APPD						

**BRIDGE AND STRUCTURES OFFICE**



**STANDARD BRIDGE MOUNTED SIGN BRACKET**

BRIDGE MOUNTED SIGN BRACKET  
DETAILS 3 OF 3

BRIDGE SHEET NO. 5 OF SHEETS