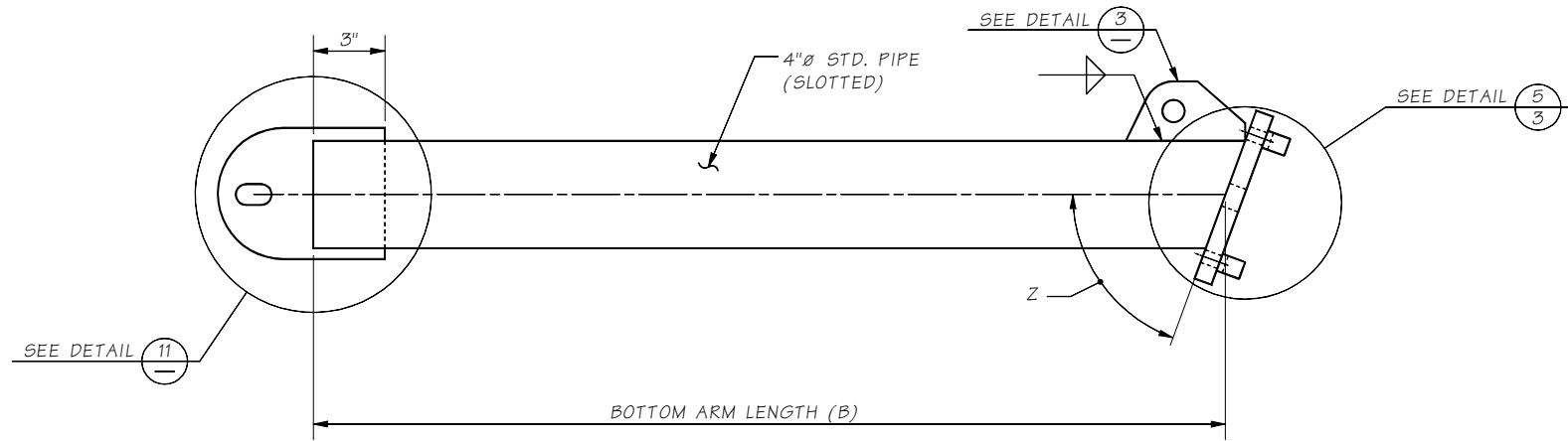


SIGN BRACKET NO.	Z° (CONTRACTOR TO VERIFY)			
	SUPPORT #1	SUPPORT #2	SUPPORT #3	SUPPORT #4
1	--°	--°	--°	--°

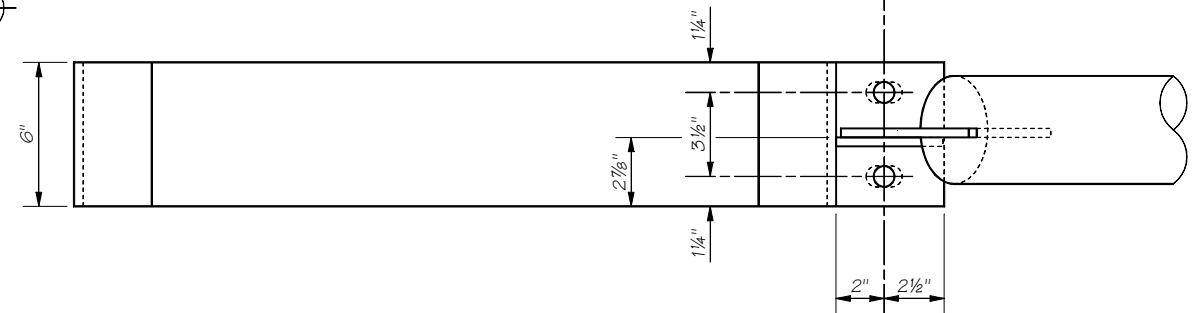
NOTES TO DESIGNER:

1. REMOVE DETAIL 3 IF BRACING ROD IS NOT USED. ALSO REMOVE CALL OUTS AND LINEWORK FROM OTHER DETAILS.

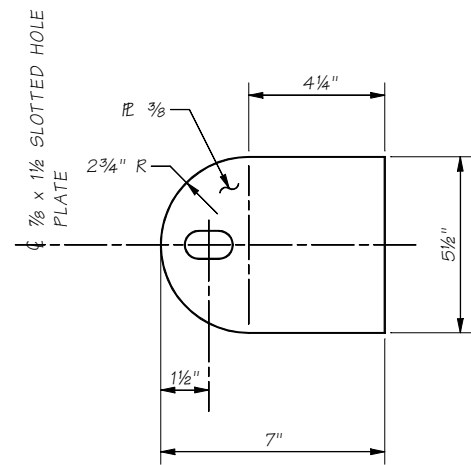
- 2 ~ 7/8" x 1 1/2" SLOTTED HOLES (BOT. PLATE)
- 2 ~ 7/8" Ø HOLES (TOP PLATE)
- 2 ~ 3/4" Ø BOLTS W/ WASHER (ASTM A325)
- TOP AND 2 1/2" x 3/8" x 2 1/2" WASHER BOTTOM.
- PLACE BOLT W/ NUT ON UNDERSIDE.



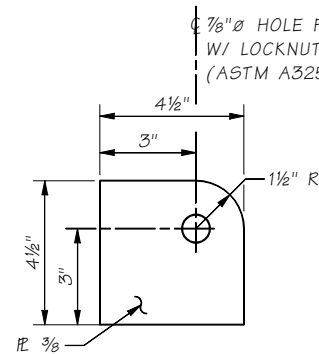
DETAIL 2



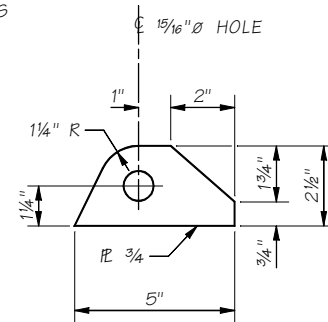
VIEW G



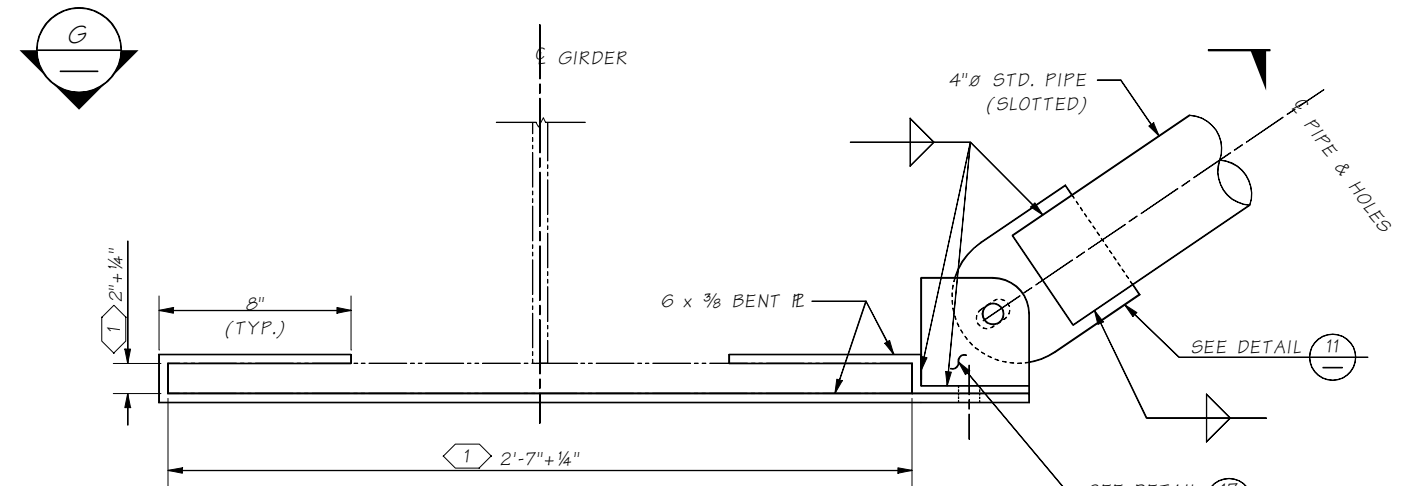
DETAIL 11



DETAIL 17



DETAIL 3



DETAIL 7

NOTES:

1. CONTRACTOR TO FIELD VERIFY PRIOR TO FABRICATION

Last Revised: 03/26/2021

JOB NO. SHEET

10.1-A6-4C

Bridge Design Engr.		M:\STANDARDS\Bridge Mounted Sign Brackets\4c - BMSB DETAILS 2 OF 3 - STEEL GIRDER.MAN		REGION NO.	STATE	FED. AID PROJ. NO.	SHEET NO.	TOTAL SHEETS
Supervisor				10	WASH.			
Designed By				JOB NUMBER				
Checked By								
Detailed By								
Bridge Projects Engr.								
Prelim. Plan By								
Architect/Specialist	DATE	REVISION	BY	APPD				

BRIDGE AND STRUCTURES OFFICE



BRIDGE MOUNTED SIGN BRACKET
DETAILS 2 OF 3

BRIDGE SHEET NO.
SHEET
OF
SHEETS