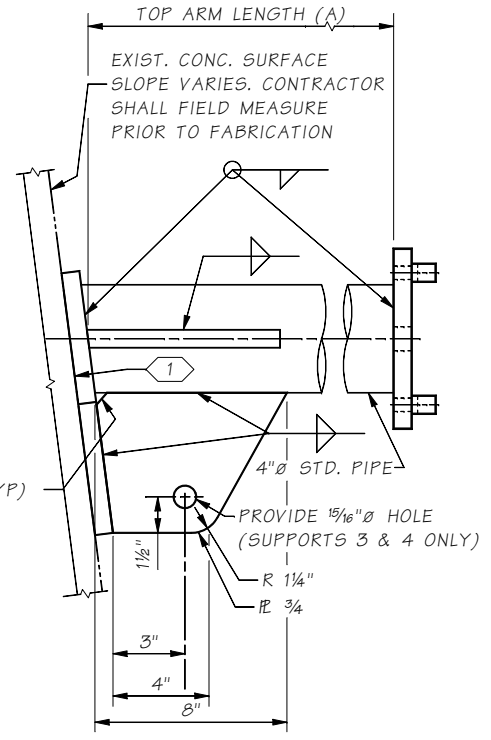
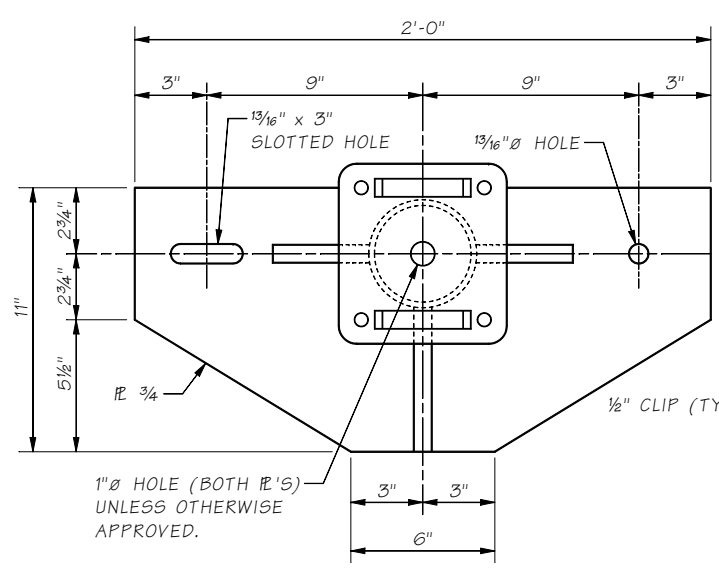
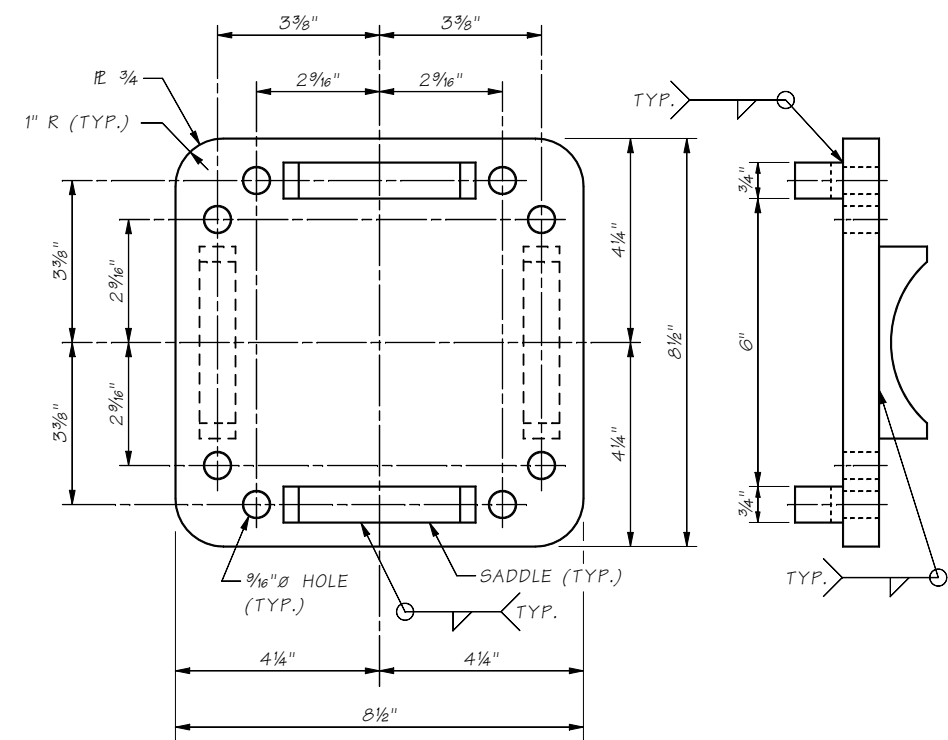
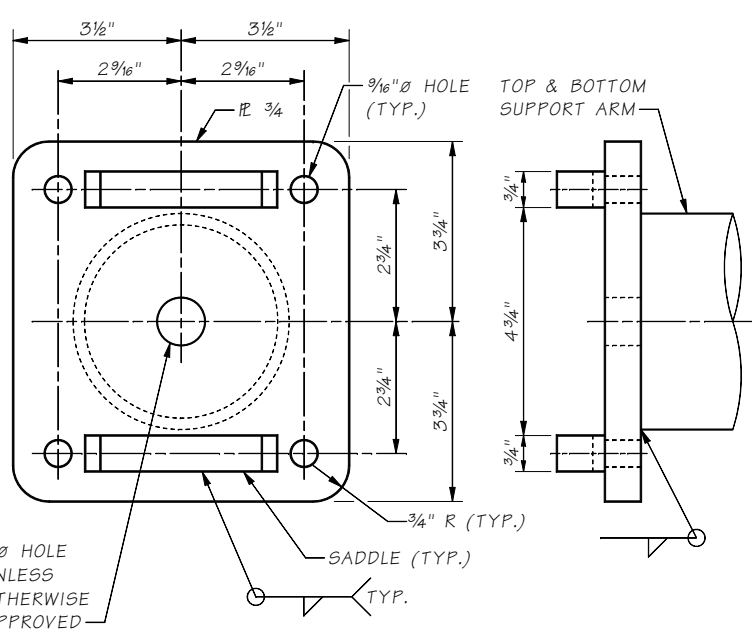
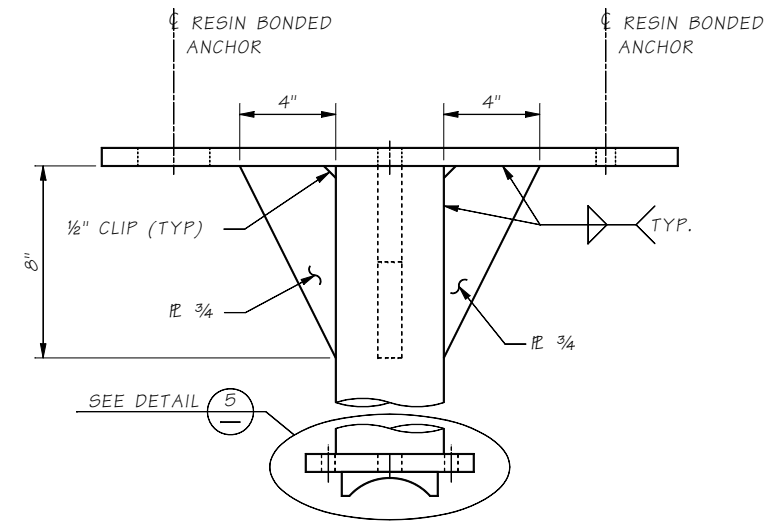
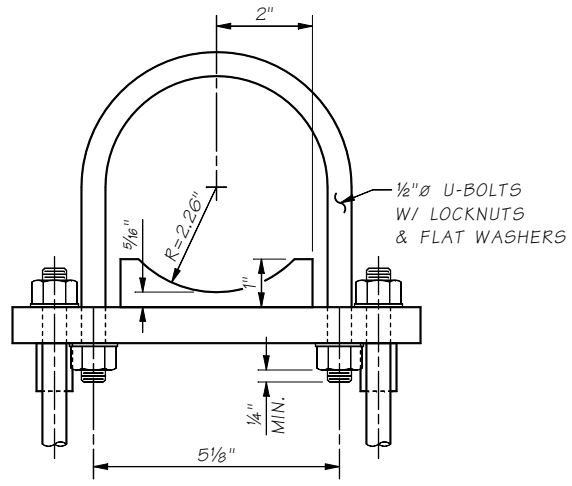
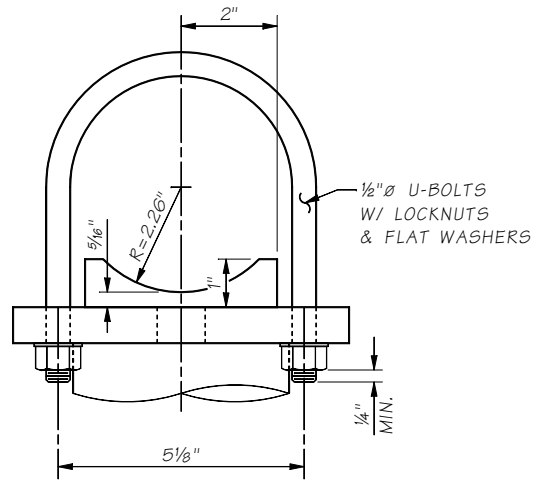


NOTES TO DESIGNER:  
 1. REMOVE CALL OUTS AND LINEWORK IF BRACING ROD IS NOT USED.  
 2. SHOW FORWARD OR BACK FACING SLOPE FOR TOP BRACKET ARM.



DETAIL 5  
2 & 3

DETAIL 6  
2

DETAIL 1  
2

NOTES:  
 1 APPLY EPOXY BONDING AGENT TO SURFACE FOR UNIFORM BEARING

LAST REVISED ON: 06/29/2020

SR FILE SHEET JOB ON FILE 10.1-A6-3

Bridge Design Engr.	M:\STANDARDS\Bridge Mounted Sign Brackets\3 - BMSB DETAILS 1 OF 3.MAN	REGION NO.	STATE	FED. AID PROJ. NO.	SHEET NO.	TOTAL SHEETS
Supervisor		10	WASH.			
Designed By		JOB NUMBER				
Checked By						
Detailed By						
Bridge Projects Engr.						
Prelim. Plan By						
Architect/Specialist	DATE	REVISION	BY	APPD		

BRIDGE AND STRUCTURES OFFICE



BRIDGE MOUNTED SIGN BRACKET  
 DETAILS 1 OF 3

BRIDGE SHEET NO.  
 SHEET  
 OF  
 SHEETS