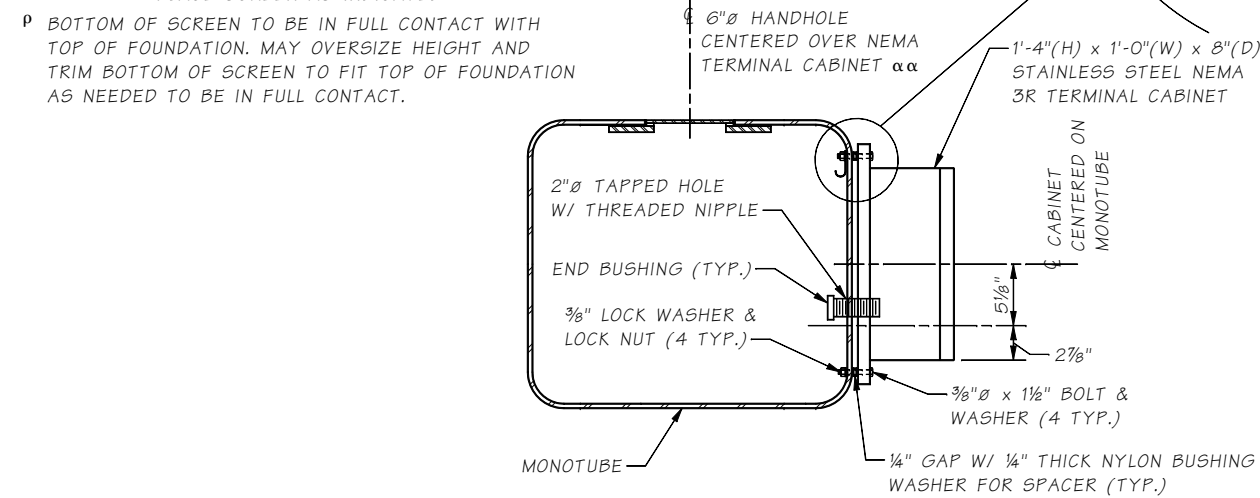
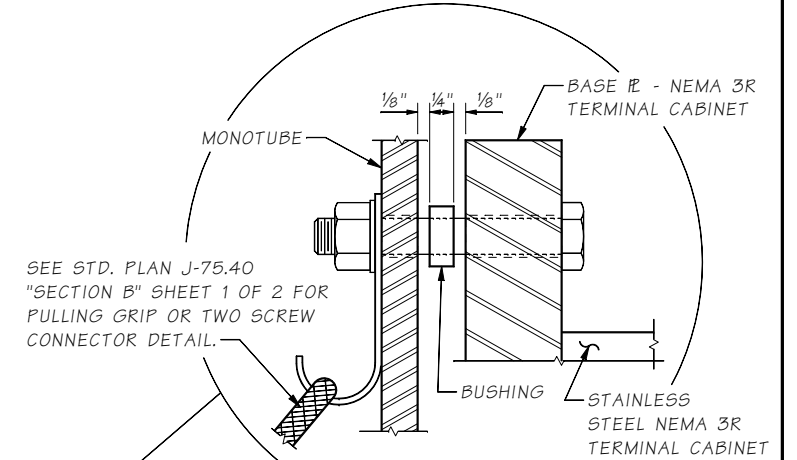
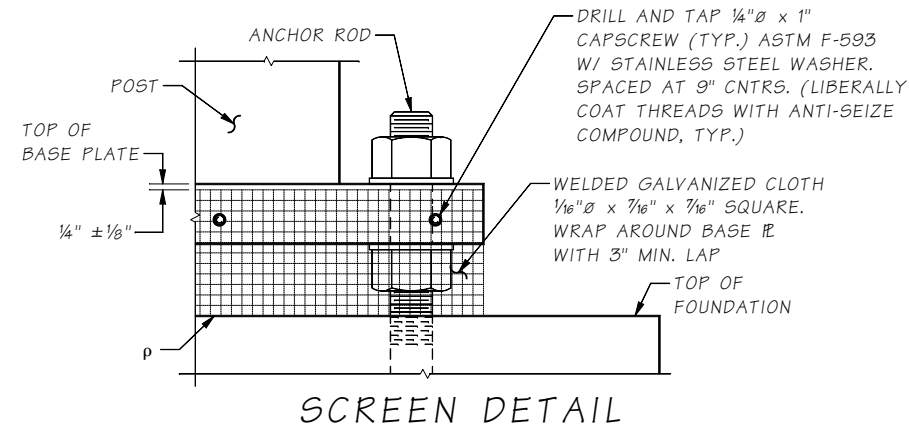
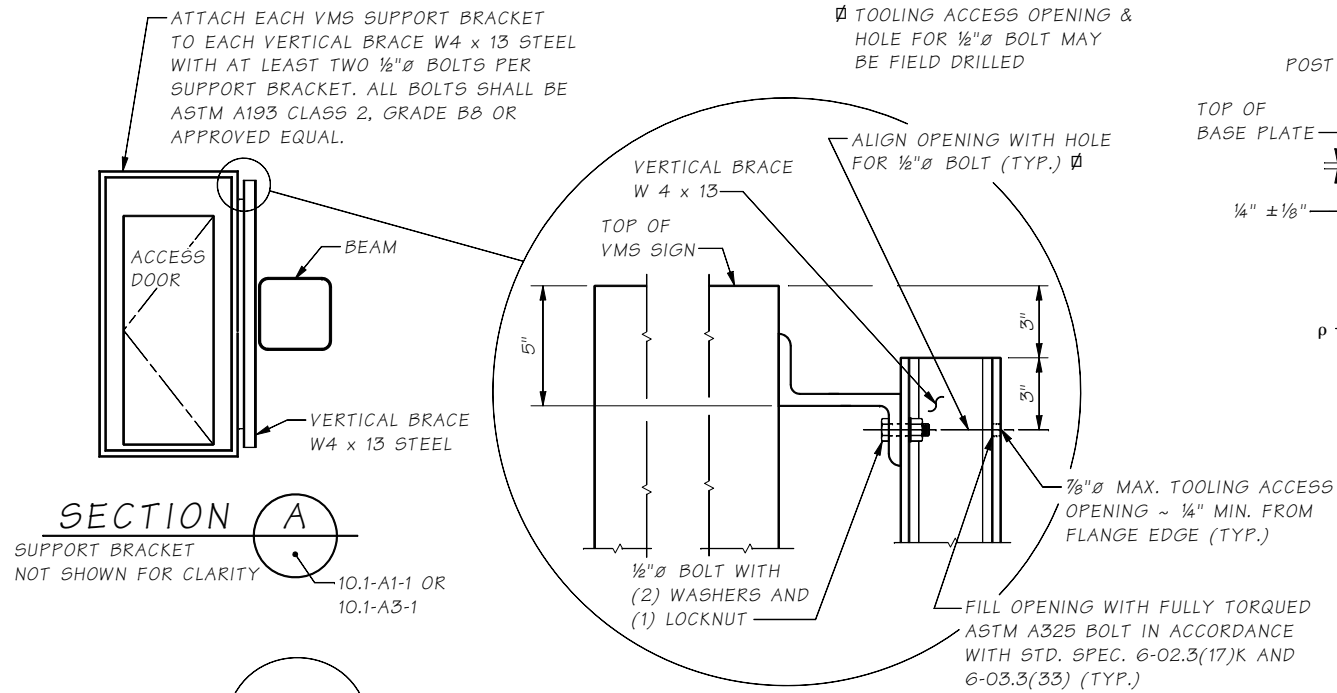
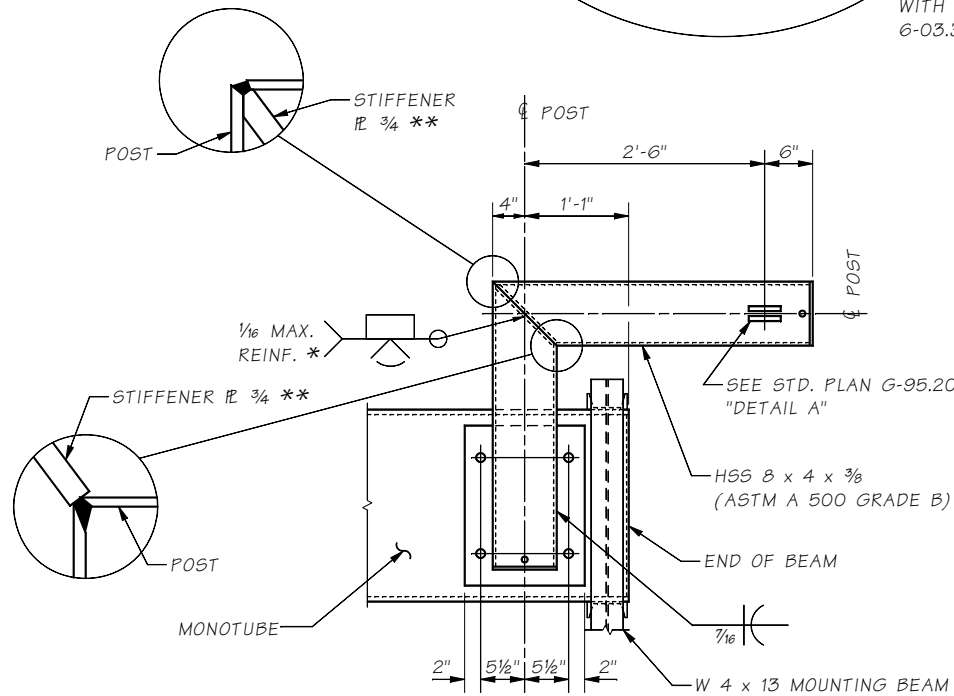


Last revised on : 06/01/17



**NEMA 3R TERMINAL CABINET DETAIL**

αα IF NO OTHER HANDHOLE IS WITHIN 1'-6" OF CABINET



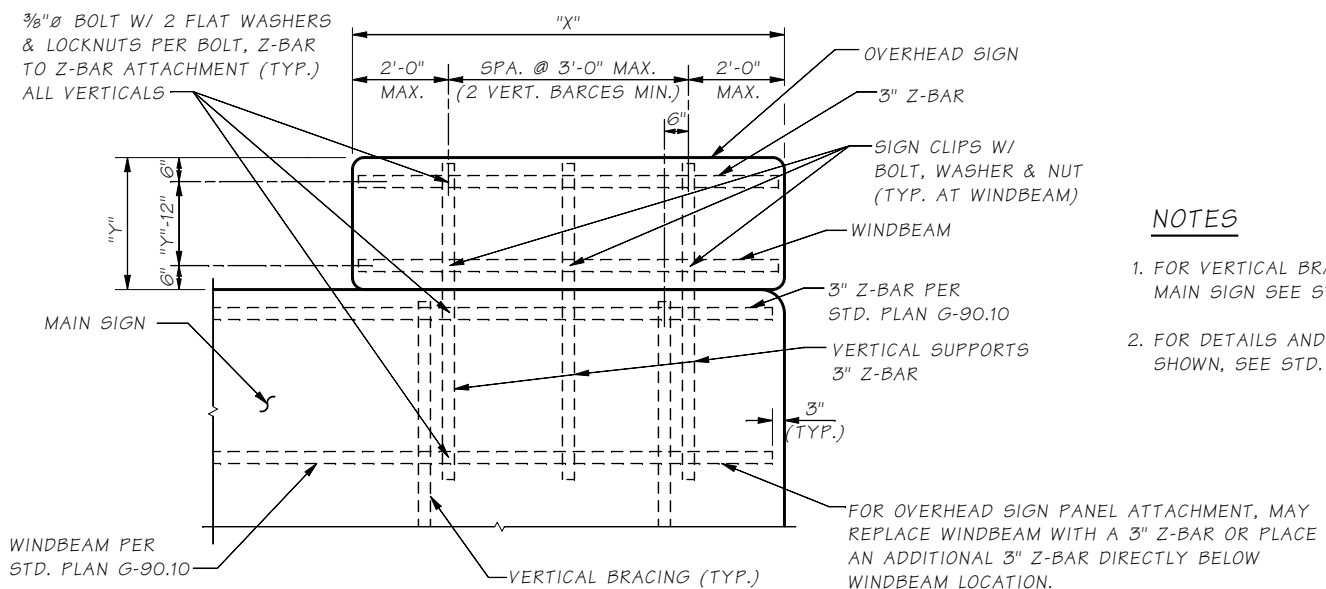
**MODIFIED FALL RESTRAINT BRACKET DETAIL**

**NOTE:**

DETAILS SAME AS STD. PLAN G-95.20 EXCEPT AS NOTED. SEE "FALL RESTRAINT BRACKET INSTALLATION ON EXISTING MONOTUBE SIGN BRIDGE" SHEET 2 OF 3 FOR PLATE & BOLTING INFORMATION.

\* MT & VT @ ROOT PASS 100% & @ COVER PASS 100%

\*\* DRILL 1 1/2" HOLE IN CENTER OF STIFFENER.



**OVERHEAD SIGN PANEL ATTACHMENT DETAIL**

LOOKING AT FRONT FACE OF SIGN.

**NOTES**

1. FOR VERTICAL BRACING DETAILS OF MAIN SIGN SEE STD. PLAN G-90.10.
2. FOR DETAILS AND MATERIAL SPECIFICATIONS NOT SHOWN, SEE STD. PLANS G-24.60 AND G-90.10.

10.1-A5-2

Bridge Design Engr.	M:STANDARDS\Sign Bridges\MT_SIGN_BRIDGE_COMMON_DET5.MAN	REGION NO.	STATE	FED. AID PROJ. NO.	SHEET NO.	TOTAL SHEETS
Supervisor		10	WASH.			
Designed By		JOB NUMBER				
Checked By						
Detailed By						
Bridge Projects Engr.						
Prelim. Plan By						
Architect/Specialist	DATE	REVISION	BY	APPD		

**BRIDGE AND STRUCTURES OFFICE**



**STANDARD MONOTUBE SIGN STRUCTURES**

MONOTUBE SIGN STRUCTURES COMMON DETAILS

BRIDGE SHEET NO.  
SHEET  
OF  
SHEETS