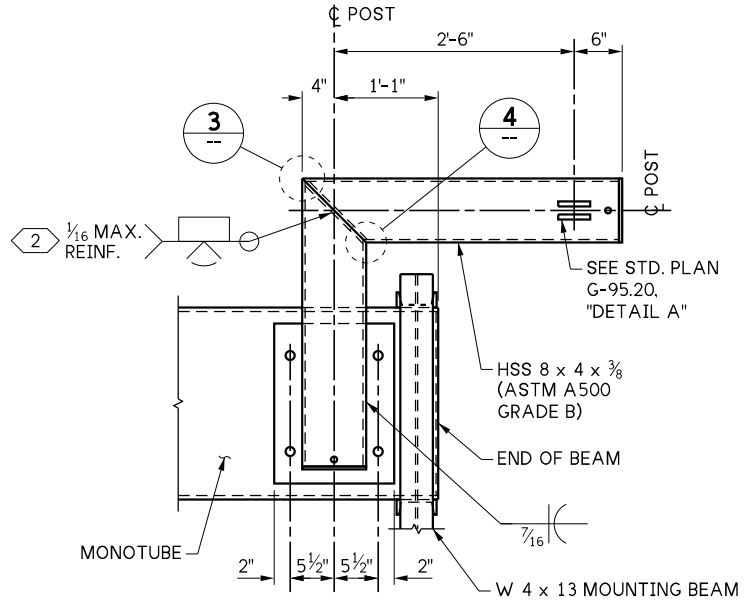
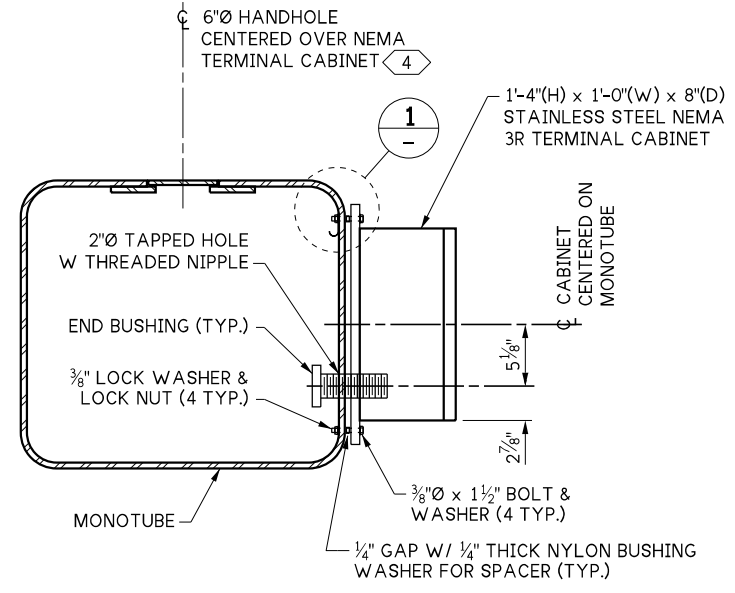


LAST REVISED: 08/18/2025

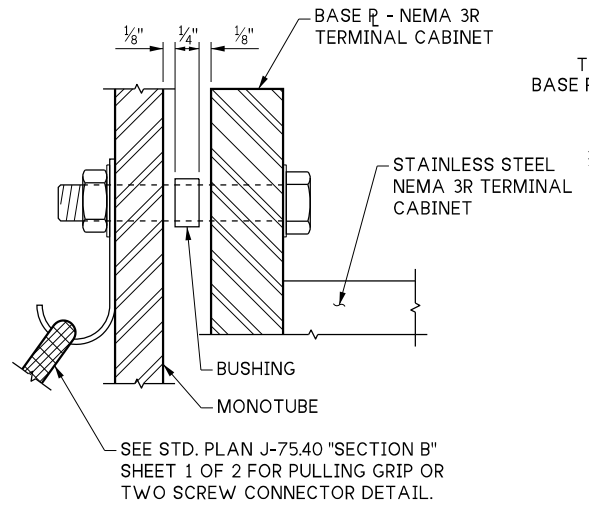


**MODIFIED FALL RESTRAINT BRACKET DETAIL**

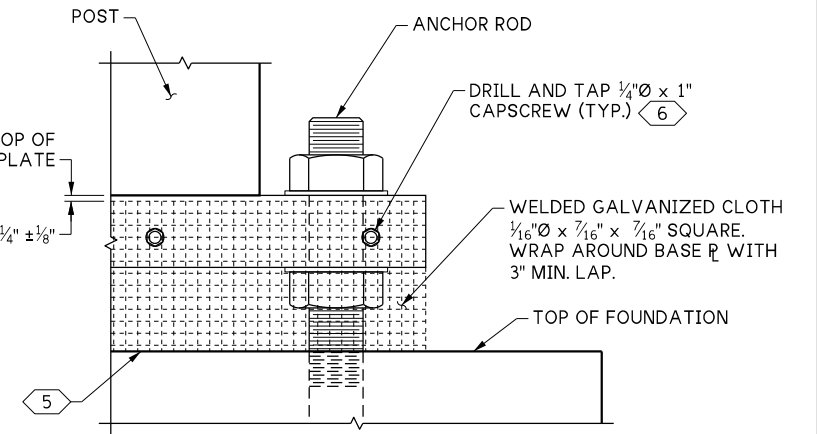
SEE "FALL RESTRAINT BRACKET INSTALLATION ON EXISTING MONOTUBE SIGN BRIDGE SHEET 2 OF 3 FOR PLATE & BOLTING INFORMATION.



**NEMA 3R TERMINAL CABINET DETAIL**

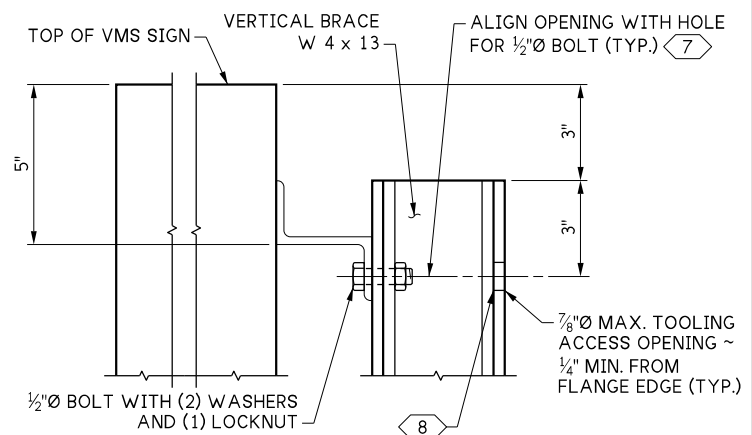


**DETAIL 1**

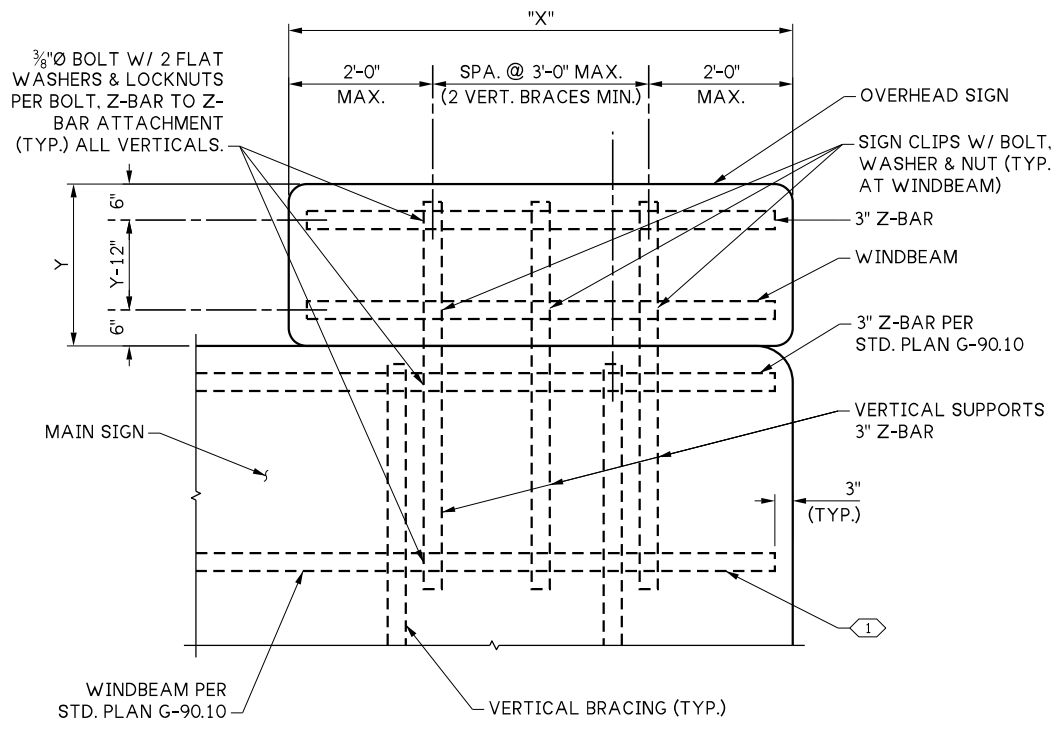


**SCREEN DETAIL**

PLACE SCREEN AS INDICATED

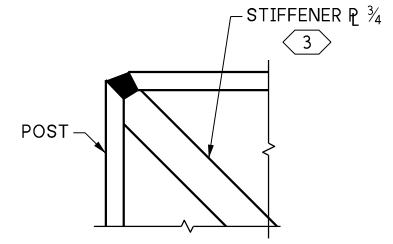


**DETAIL 2**

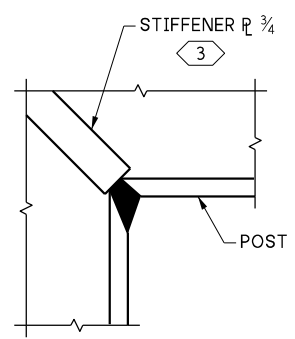


**OVERHEAD SIGN PANEL ATTACHMENT DETAIL**

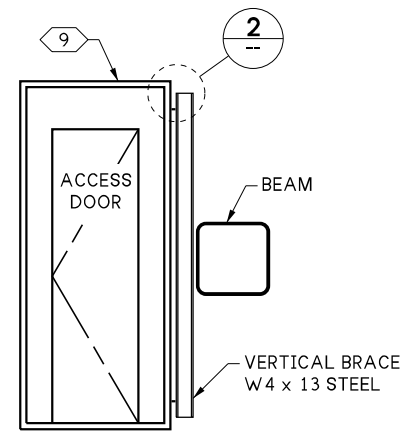
LOOKING AT FRONT FACE OF SIGN



**DETAIL 3**



**DETAIL 4**



**SECTION A**

SUPPORT BRACKET NOT SHOWN FOR CLARITY  
10.1-A-1-1 OR 10.1-A-3-1

**KEY NOTES:**

- 1 FOR OVERHEAD SIGN PANEL ATTACHMENT, WINDBEAM MAY BE REPLACED WITH A 3" Z-BAR OR PLACE AN ADDITIONAL 3" Z-BAR DIRECTLY BELOW WINDBEAM LOCATION.
- 2 MT & VT @ ROOT PASS 100% & COVER PASS 100%.
- 3 DRILL 1 1/2" HOLE IN CENTER OF STIFFENER.
- 4 IF NO OTHER HANDHOLE IS WITHIN 1'-6" OF CABINET.
- 5 BOTTOM OF SCREEN TO BE IN FULL CONTACT WITH TOP OF FOUNDATION. MAY OVERSIZE HEIGHT AND TRIM BOTTOM OF SCREEN TO FIT TOP OF FOUNDATION AS NEEDED TO BE IN FULL CONTACT.
- 6 ASTM F-593 W/ STAINLESS STEEL WASHER, SPACED AT 9" CNTRS. (LIBERALLY COAT THREADS WITH ANTI-SEIZE COMPOUND, TYP.)
- 7 TOOLING ACCESS OPENING & HOLE FOR 1/2" BOLT MAY BE FIELD DRILLED.
- 8 FILL OPENING WITH FULLY TORQUED ASTM A325 BOLT IN ACCORDANCE WITH STD. SPEC. 6-02.3(17)K AND 6-03.3(33) (TYP.)
- 9 ATTACH EACH VMS SUPPORT BRACKET TO EACH VERTICAL BRACE W 4 x 13 STEEL WITH AT LEAST TWO 1/2" BOLTS PER SUPPORT BRACKET. ALL BOLTS SHALL BE ASTM A193 CLASS 2, GRADE B8 OR APPROVED EQUAL.

**GENERAL NOTES:**

- 1. FOR VERTICAL BRACING DETAILS OF MAIN SIGN SEE PLAN G-90.10.
- 2. FOR DETAILS AND MATERIAL SPECIFICATIONS NOT SHOWN, SEE STD. PLANS G-24.60 AND G-90.10.

10.1-A-5-2

FILE NAME: 10.1-A5-2_Monotube Sign Structures Common Details.dgn				REGION NO. 10	STATE WASH		STANDARD MONOTUBE SIGN STRUCTURES MONOTUBE SIGN STRUCTURES COMMON DETAILS	PLAN REF NO.
BRIDGE DES. ENG.	BRIDGE PROJ. ENG.	SUPERVISOR	DESIGNED BY	CHECKED BY	ENTERED BY			PRELIM. PLAN BY
PLOT DATE: 02-Oct-2025 PLOT TIME: 12:54:09 PM PLOTTED BY: deboejak				FILE PATH: pw://projectstore.wsdot.wa.gov:WSDOT/Documents/_HQ/Bridge & Structures/Bridge Design/_Design Standards/Standard Drawings and Details/Sign Structures and Components/_DGN/10.1-A5-2_Monotube Sign Structures Common Details.dgn		PRELIMINARY PLAN NOT FOR CONSTRUCTION		