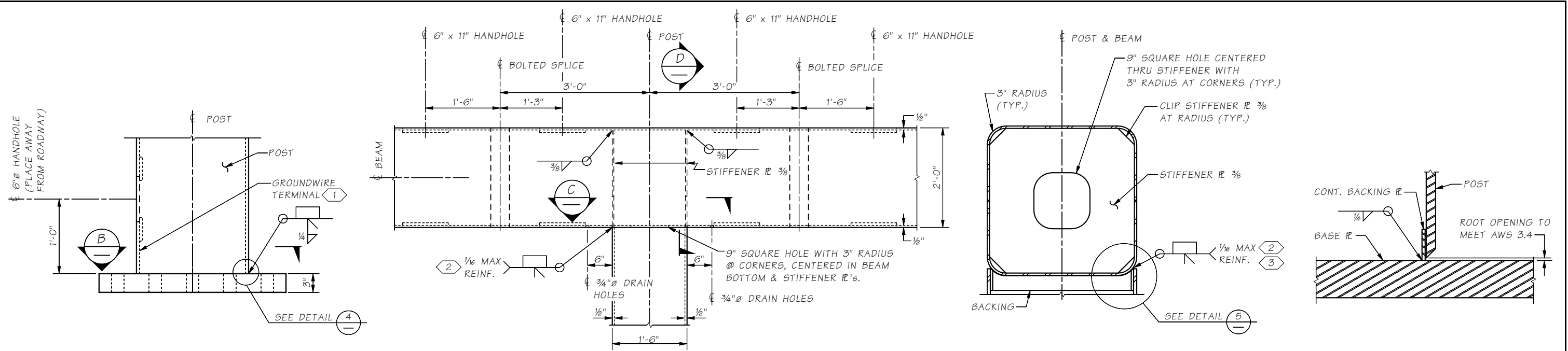


Last revised on : 01/21/2021

10.1-A3-2

SR JOB NO. SHEET

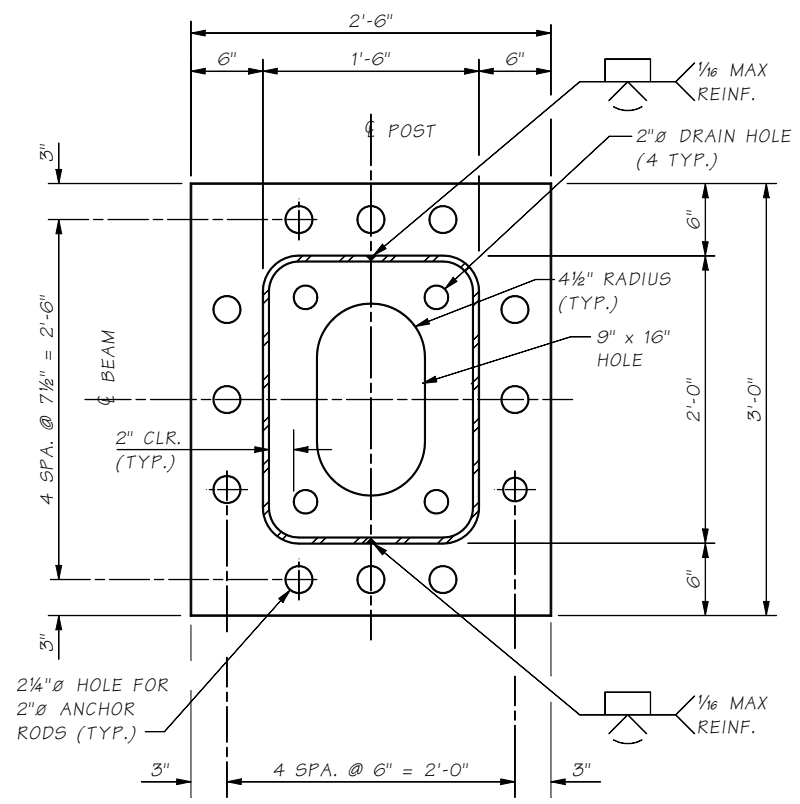


DETAIL 1
POST BASE
10.1-A3-1

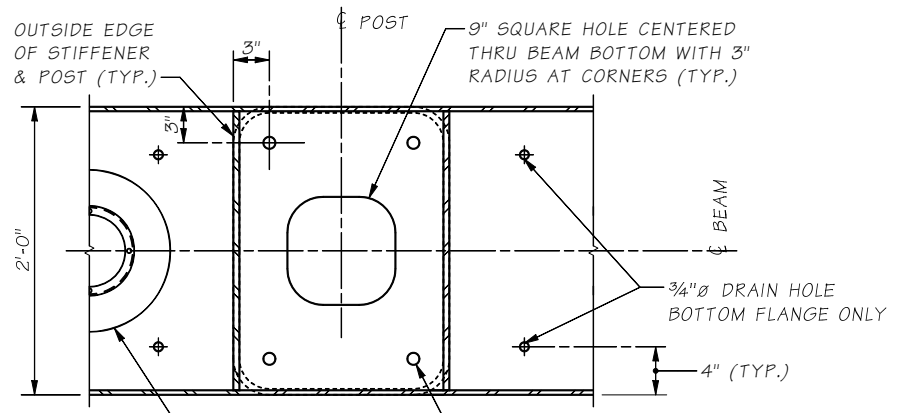
DETAIL 2
10.1-A3-1

SECTION D

DETAIL 4

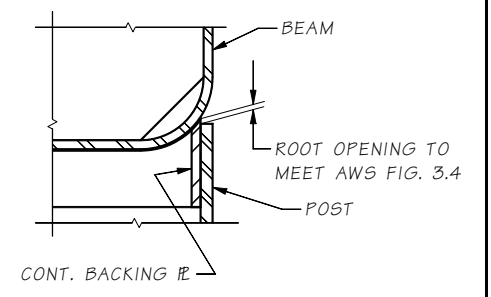


SECTION B

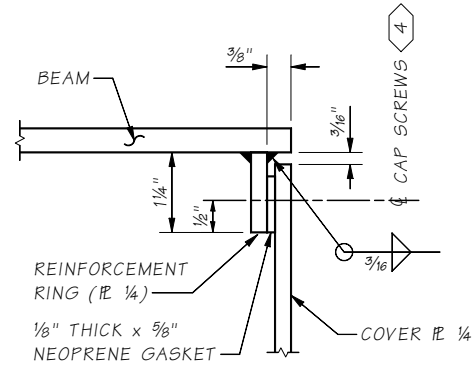


SECTION C

note to designer
adjust drain holes & handholes if there is interference with attachment brackets



DETAIL 5



DETAIL 3
10.1-A3-1

- NOTES:**
- ① SEE STD. PLAN J-75.40 SHEET 1 OF 2 "DETAIL C" FOR GROUND CONNECTION.
 - ② MT & VT @ ROOT PASS 100% AND @ COVER PASS 100%
 - ③ WELDING SHALL NOT BEGIN UNTIL THE ENGINEER HAS INSPECTED AND APPROVED FIT-UP OF THE JOINT.
 - ④ 1/4" CAP SCREWS ASTM F-593. TAP REINFORCEMENT RING WITH 8 TOTAL EQUALLY SPACED AROUND COVER R

Bridge Design Engr.	M:STANDARDS\Sign Bridges\MT_CANT_T_STRUCT_DETAILS_1.MAN	REGION NO.	STATE	FED. AID PROJ. NO.	SHEET NO.	TOTAL SHEETS
Supervisor		10	WASH.			
Designed By		JOB NUMBER				
Checked By						
Detailed By						
Bridge Projects Engr.						
Prelim. Plan By						
Architect/Specialist						
DATE	REVISION	BY	APPD			

BRIDGE AND STRUCTURES OFFICE



STANDARD MONOTUBE SIGN STRUCTURES
MONOTUBE BALANCED CANTILEVER STRUCTURAL DETAILS 1