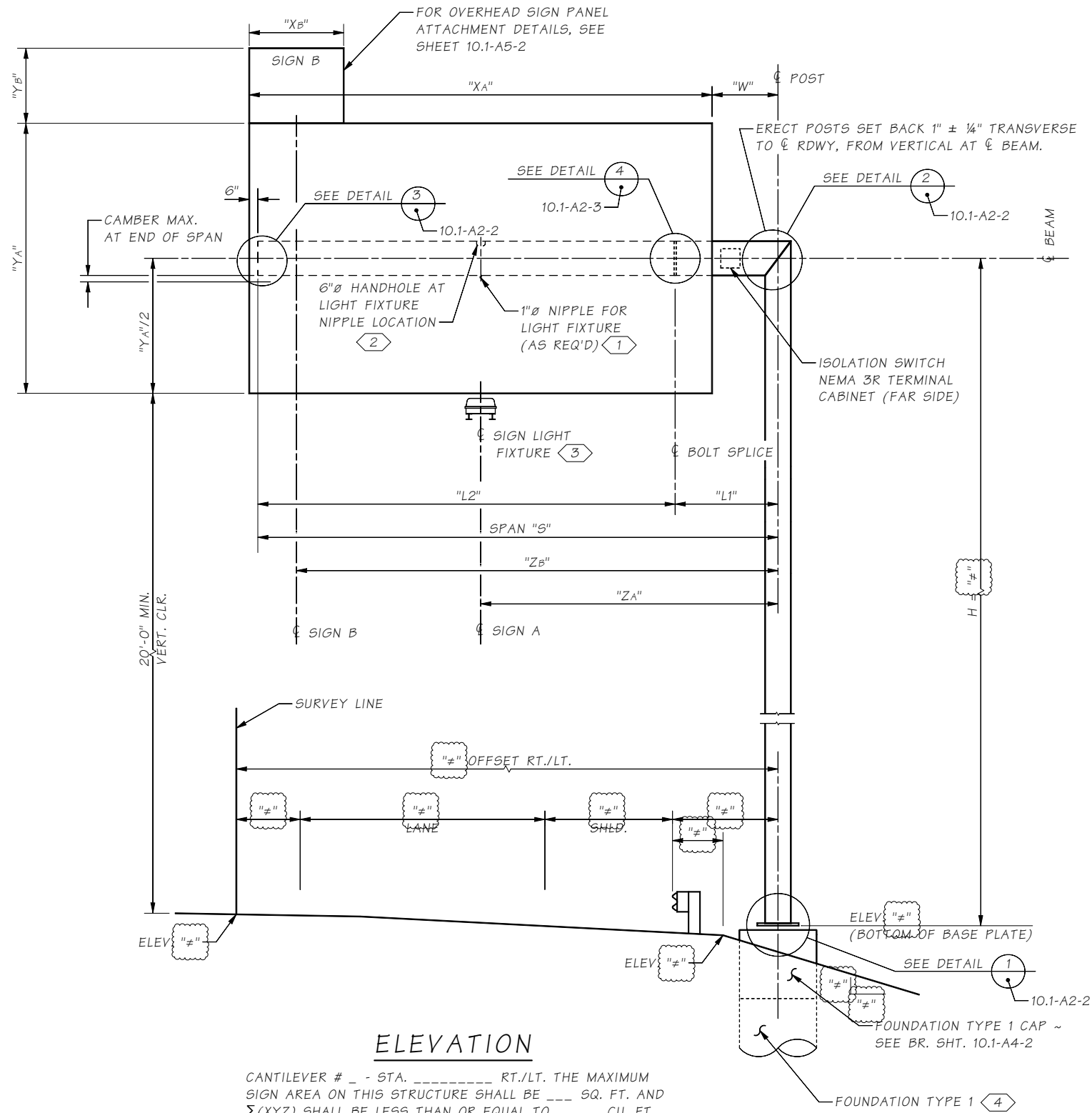


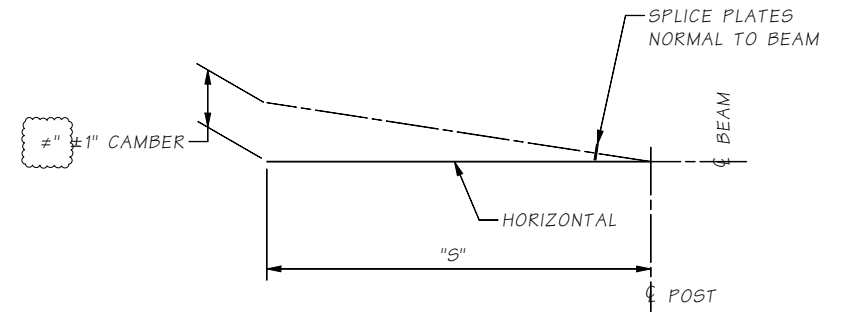
Last revised on : 01/21/2021

10.1-A2-1
SR JOB NO. SHEET



ELEVATION

CANTILEVER # _ - STA. _____ RT./LT. THE MAXIMUM SIGN AREA ON THIS STRUCTURE SHALL BE ___ SQ. FT. AND $\Sigma(XYZ)$ SHALL BE LESS THAN OR EQUAL TO ___ CU. FT. LOOKING _____ ON STATIONING.



BEAM CAMBER DIAGRAM

notes to the designer

delete all lights and electrical details, callouts & notes if no electrical items required on the sign structure.

existing roadway lines dashed and new roadway is solid.

always show sign in front of structure.
remove notes that are not applicable.

"#" is shown where dimensions are required.

NOTES:

- 1) CONTRACTOR TO VERIFY NIPPLE LOCATION TO MATCH LIGHT FIXTURE CONDUIT LOCATIONS, PRIOR TO SIGN STRUCTURE FABRICATION. NO FIELD WELDING OR DRILLING SHALL BE PERMITTED.
- 2) HANDHOLE IS ONLY REQUIRED IF NIPPLE LOCATION IS GREATER THAN 1'-6" FROM ANOTHER HAND HOLE LOCATION.
- 3) SEE STD. PLAN G-90.40.
- 4) SEE SHEET 10.1-A4-1 (FOUNDATION TYPE 2 OR 3 NOT SHOWN. FOR DETAILS SEE BR. SHT. 10.1-A4-3)

Bridge Design Engr.	M:\STANDARDS\Sign Bridges\MT_SIGN_BRIDGE_CANTILEVER_LO.MAN					REGION NO.	STATE	FED. AID PROJ. NO.	SHEET NO.	TOTAL SHEETS
Supervisor						10	WASH.			
Designed By						JOB NUMBER				
Checked By										
Detailed By										
Bridge Projects Engr.										
Prelim. Plan By										
Architect/Specialist	DATE	REVISION	BY	APPD						

BRIDGE AND STRUCTURES OFFICE



STANDARD MONOTUBE SIGN STRUCTURES

MONOTUBE CANTILEVER LAYOUT

BRIDGE SHEET NO.
SHEET
OF
SHEETS