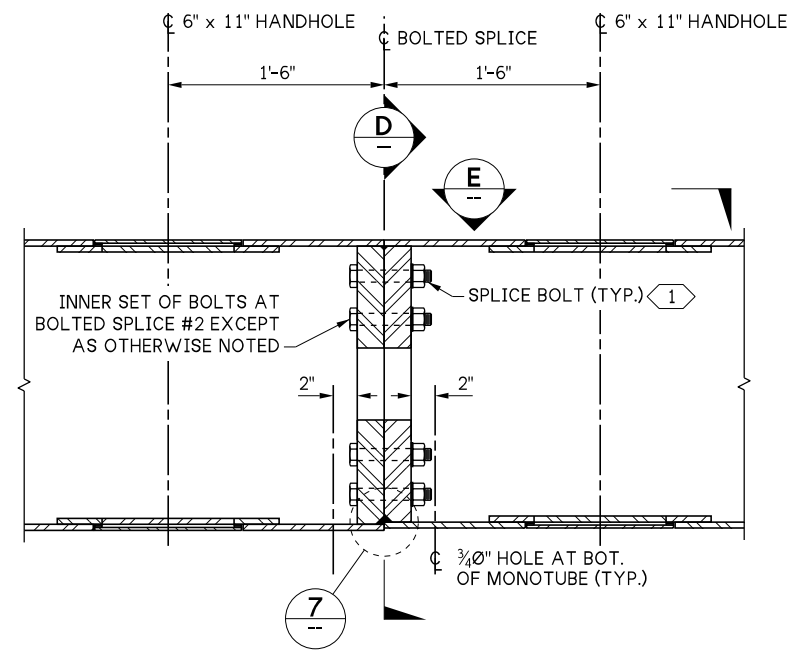
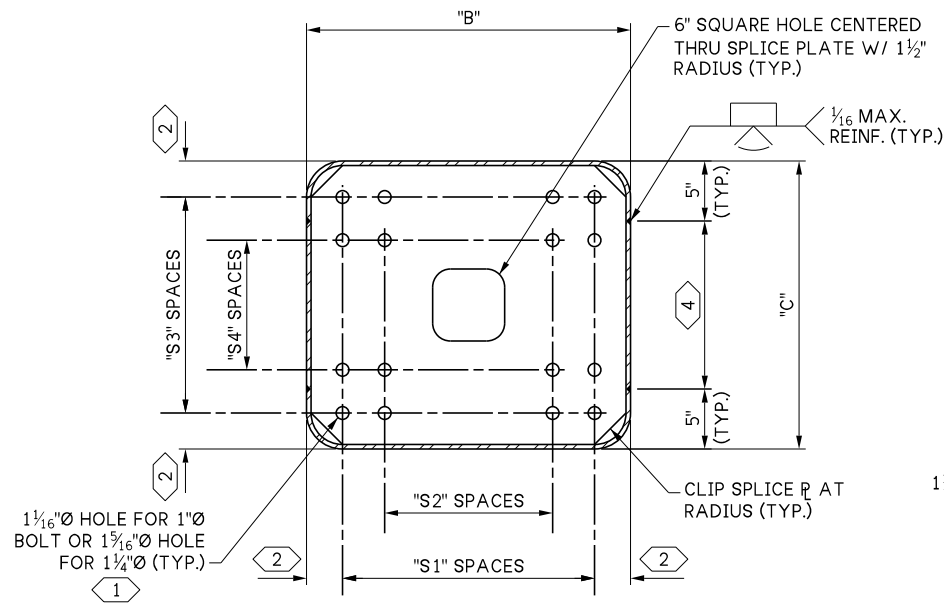


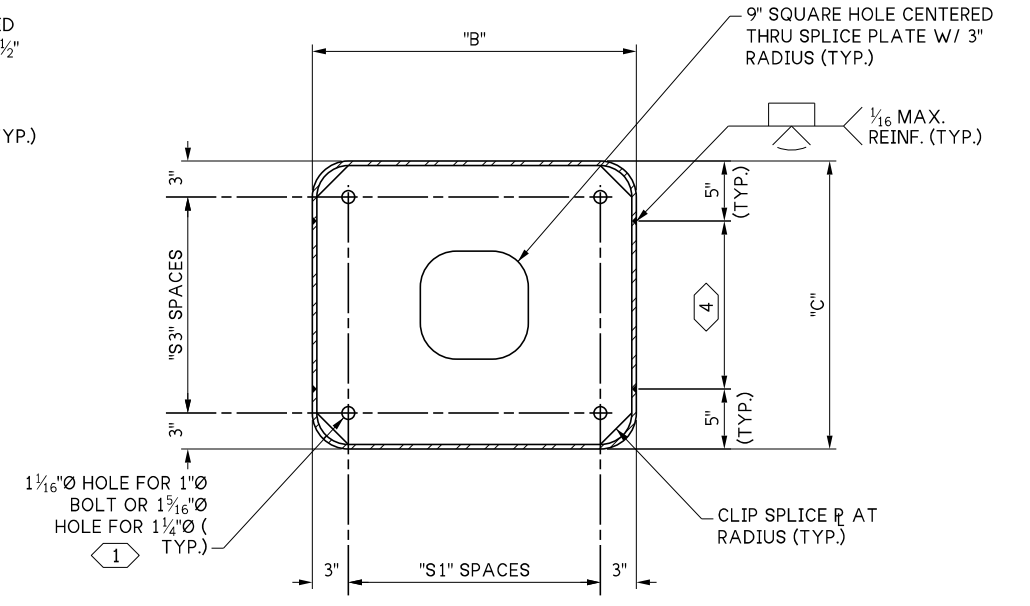
LAST REVISED: 04/14/2025



DETAIL 6
10.1-A1-1

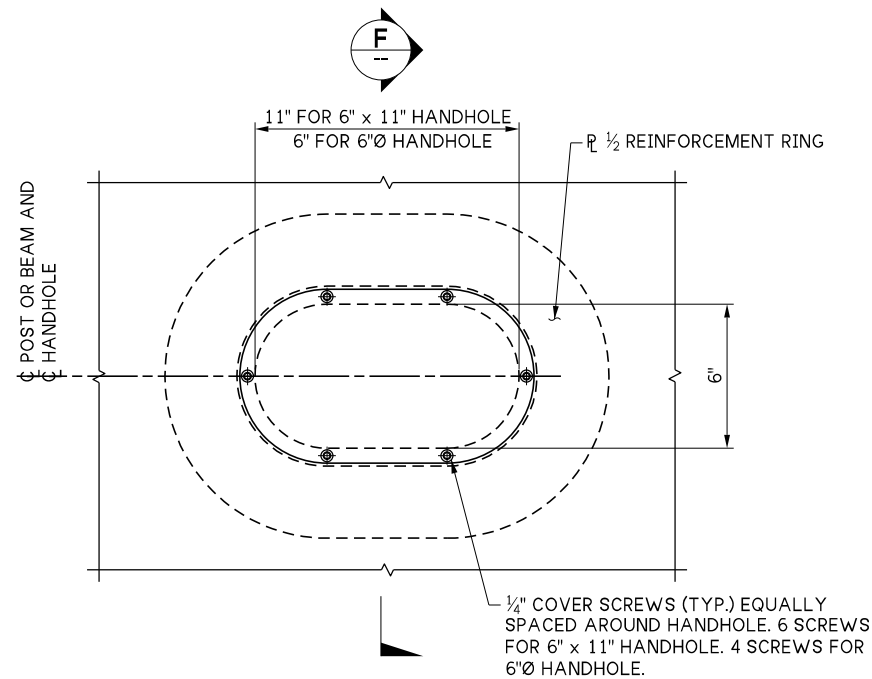


SECTION D
BOLTED SPLICE #2
DETAIL

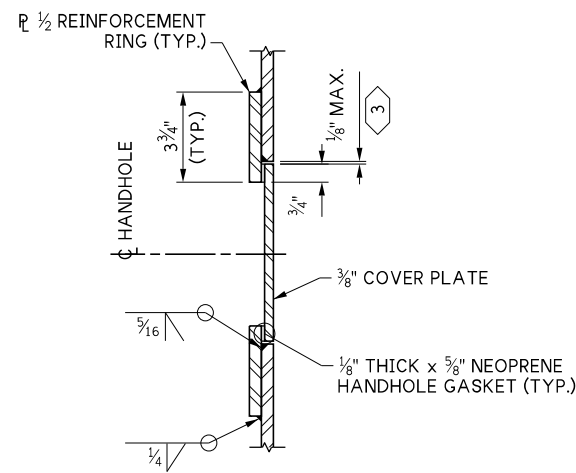


SECTION D
BOLTED SPLICE #1
DETAIL

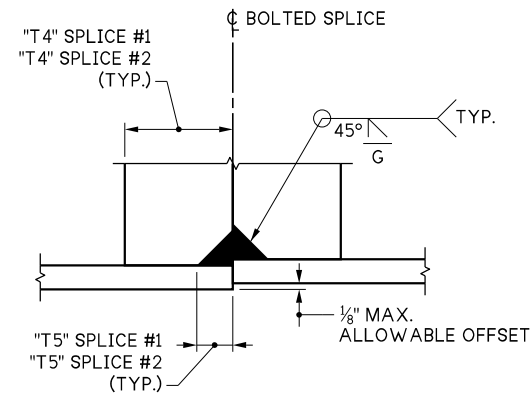
DESIGNER TO DELETE NON-APPLICABLE DETAILS



VIEW E



SECTION F



DETAIL 7

KEY NOTES:

- 1) 1" SPLICE BOLT (TYP. UP TO 120'-0" SPANS). 1 1/4" SPLICE BOLT (TYP. 120'-0" - 180'-0" SPANS).
- 2) 3" FOR 1" SPLICE BOLT OR 2 7/8" FOR 1 1/4" SPLICE BOLT.
- 3) SEAL WITH APPROVED SEALANT AT INSTALLATION OF HANDHOLES ON TOP OF BEAM ONLY.
- 4) CUT CAMBER IN SIDE PLATE (TYP.).
- 4) 6" x 11" HANDHOLE SHOWN. 6"Ø HANDHOLE SIMILAR EXCEPT AS NOTED.
- 5) SECTION THROUGH BEAM AT BOLTED SPLICE #2. BOLTED SPLICE #1 SIMILAR.

10.1-A1-3

FILE NAME	10.1-A1-3_Monotube Sign Bridge Details 2.dgn			
BRIDGE DES. ENG.				
BRIDGE PROJ. ENG.				
SUPERVISOR				
DESIGNED BY				
CHECKED BY				
ENTERED BY				
PRELIM. PLAN BY				
ARCH. / SPEC.				
	REVISION	DATE	BY	

REGION NO.	STATE
10	WASH
JOB NUMBER	
CONTRACT NO.	

WSDOT

PRELIMINARY PLAN
NOT FOR CONSTRUCTION

SEE CERTIFICATION SHEET DATE	SEE CERTIFICATION SHEET DATE
STAMP BOX	STAMP BOX

STANDARD DESIGN DRAWINGS
MONOTUBE SIGN STRUCTURES

MONOTUBE SIGN BRIDGE
STRUCTURAL DETAILS 2

PLAN REF NO
SHEET
OF
SHEETS