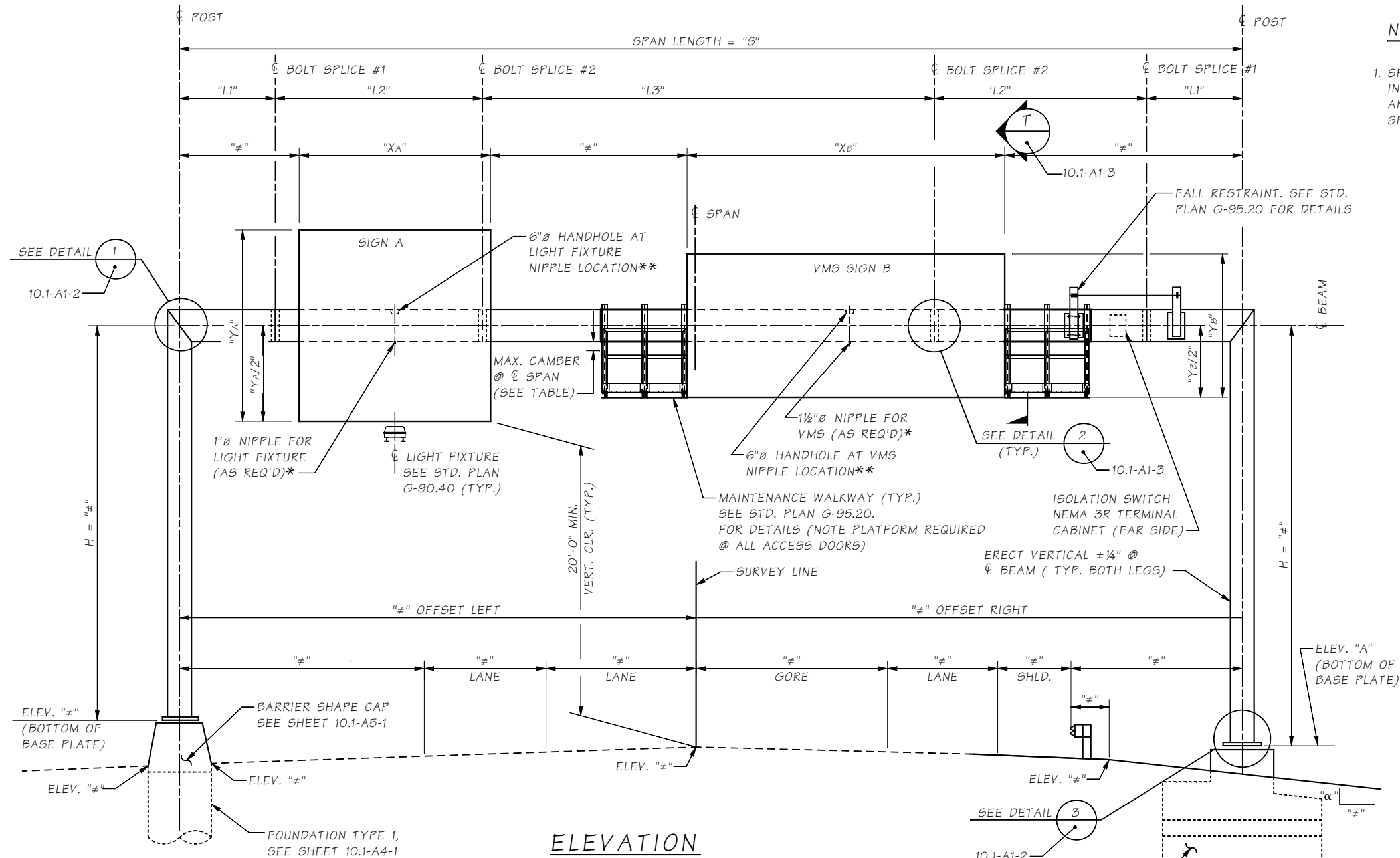


Last revised on : 4/26/2016

SHEET

10.1-A1-1



NOTE:
 1. SPANS GREATER THAN 150'-0" SHALL INCORPORATE AN "L4" MIDSPAN SEGMENT AND SHALL HAVE TWO "L3" INTERMEDIATE SPAN SEGMENTS AND TWO BOLT SPLICE #3.

ELEVATION

SIGN BRIDGE NO. _ - STA. _____
 THE MAXIMUM SIGN AREA ON THIS STRUCTURE SHALL BE ___ SQ. FT.

notes to the designer

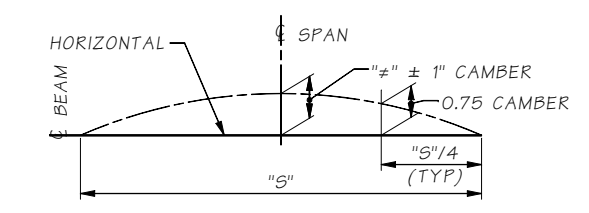
delete all lighting and electrical details, callouts & notes if no electrical items required on the sign structure, except conduit in foundation.

existing roadway lines dashed and new roadway is solid.

"#" is shown where dimensions are required.

remove notes that are not applicable.

- * CONTRACTOR TO VERIFY NIPPLE LOCATION TO MATCH VMS SIGN OR LIGHT FIXTURE CONDUIT LOCATIONS, PRIOR TO SIGN STRUCTURE FABRICATION. NO FIELD WELDING OR DRILLING SHALL BE PERMITTED.
- ** HANDHOLE IS ONLY REQUIRED IF NIPPLE LOCATION IS GREATER THAN 1'-6" FROM ANOTHER HAND HOLE LOCATION.



BEAM CAMBER DIAGRAM

Bridge Design Engr.	M:\STANDARDS\Sign Bridges\MT_SIGN_BRIDGE_LAYOUT.MAN					REGION NO.	STATE	FED. AID PROJ. NO.	SHEET NO.	TOTAL SHEETS
Supervisor						10	WASH.			
Designed By										
Checked By										
Detailed By										
Bridge Projects Engr.										
Prelim. Plan By										
Architect/Specialist	DATE	REVISION	BY	APPD						

Wed May 25 07:59:16 2016

BRIDGE AND STRUCTURES OFFICE



STANDARD MONOTUBE SIGN STRUCTURES

MONOTUBE SIGN BRIDGE LAYOUT

BRIDGE SHEET NO.
 SHEET
 OF
 SHEETS