



### Please Note:

To ensure both current and historical interchange system information is available to all who utilize the Interchange Drawing Viewer, some of the Interchange Drawing PDF files will display with hand-sketched updates. New hand-sketched files will be added when updated information is received through construction and maintenance channels. New CAD drawings will be added as they are completed. There is currently a five-year backlog on updating the CAD drawings.

If you have questions about updates to the Interchange Drawing, the hand-sketched versions of the drawings, or the Interchange Viewer Web App please email [TransportationGISDataSteward@WSDOT.WA.GOV](mailto:TransportationGISDataSteward@WSDOT.WA.GOV) with Interchange Drawing Feedback or Inquiry in the subject line.

**Continue to the following pages to see the current and historical interchange configurations.**

### *Did you know...?*

- You can download the PDF file to your computer.
- Once downloaded, you can access the layers that compose each drawing through Adobe Acrobat Reader or Pro. NOTE: Layers are not available on hand-sketches.
- [How to download and view Interchange Drawing layers in Adobe Acrobat \(PDF 115KB\)](#)

Medium

520 R 0101313

0.00 LX01288  
(0.23) Q1

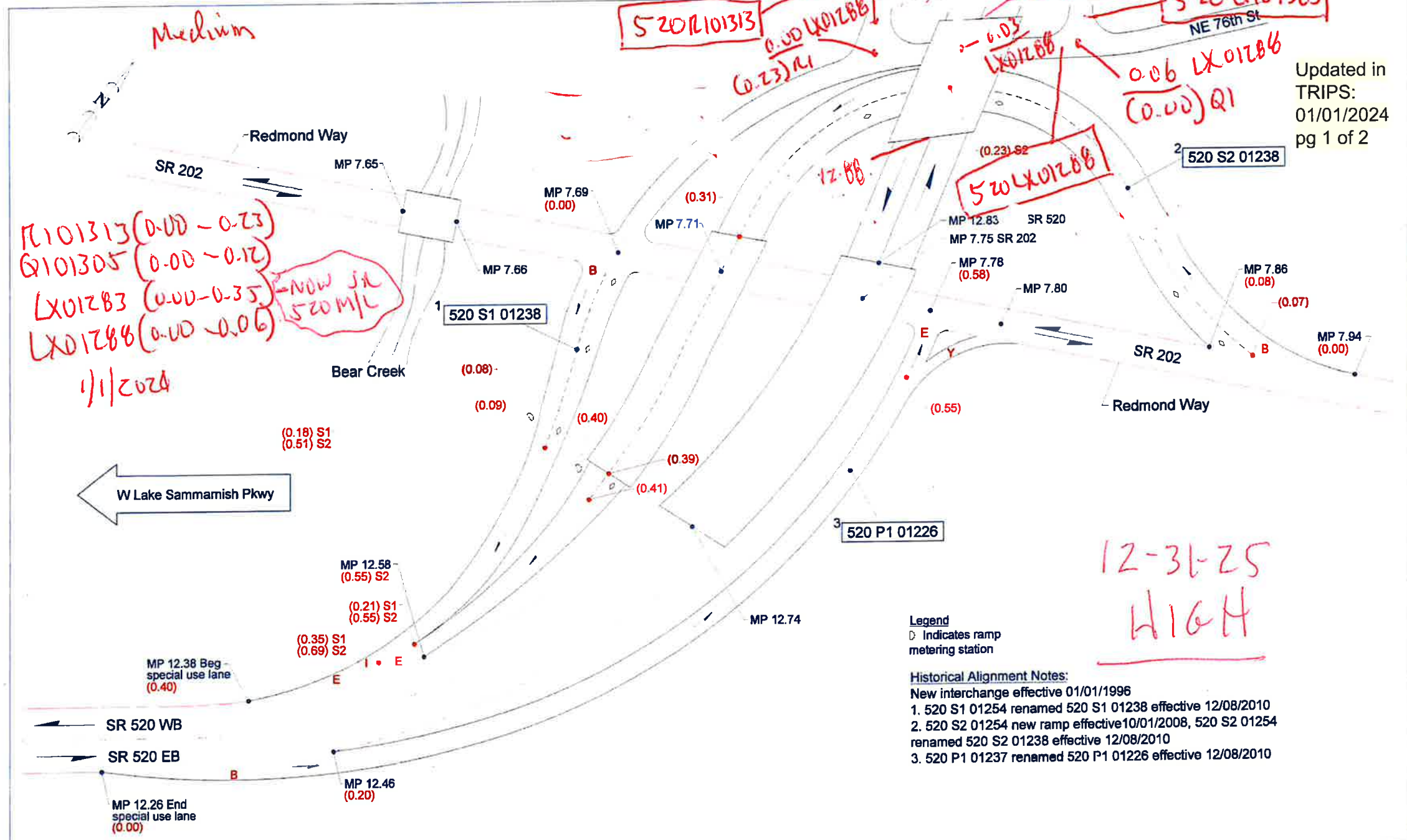
520 Q101305

0.06 LX01288  
(0.00) Q1

520 LX01288

Updated in TRIPS:  
01/01/2024  
pg 1 of 2

R 0101313 (0.00 - 0.23)  
Q101305 (0.00 - 0.12)  
LX01283 (0.00 - 0.35) - NOW SR 520 M/L  
LX01288 (0.00 - 0.06)  
1/1/2024



W Lake Sammamish Pkwy

12-31-25  
HIGH

Legend  
D Indicates ramp metering station

Historical Alignment Notes:  
New interchange effective 01/01/1996  
1. 520 S1 01254 renamed 520 S1 01238 effective 12/08/2010  
2. 520 S2 01254 new ramp effective 10/01/2008, 520 S2 01254 renamed 520 S2 01238 effective 12/08/2010  
3. 520 P1 01237 renamed 520 P1 01226 effective 12/08/2010



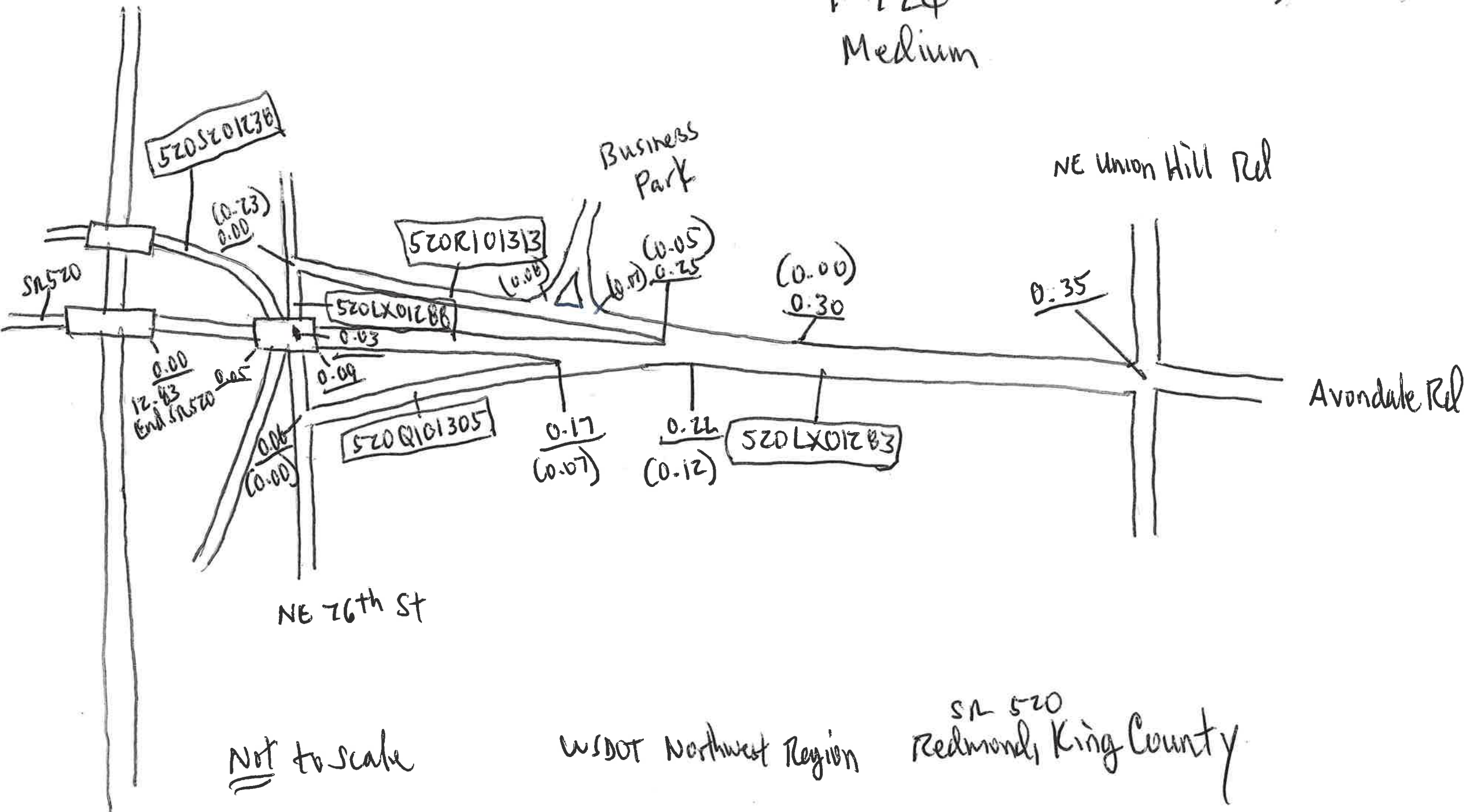


Updated in TRIPS:  
10/03/2024



I-174  
Medium

SN 702



Not to scale

WSDOT Northwest Region

SN 520  
Redmond, King County

