



### Please Note:

To ensure both current and historical interchange system information is available to all who utilize the Interchange Drawing Viewer, some of the Interchange Drawing PDF files will display with hand-sketched updates. New hand-sketched files will be added when updated information is received through construction and maintenance channels. New CAD drawings will be added as they are completed. There is currently a five-year backlog on updating the CAD drawings.

If you have questions about updates to the Interchange Drawing, the hand-sketched versions of the drawings, or the Interchange Viewer Web App please email [TransportationGISDataSteward@WSDOT.WA.GOV](mailto:TransportationGISDataSteward@WSDOT.WA.GOV) with Interchange Drawing Feedback or Inquiry in the subject line.

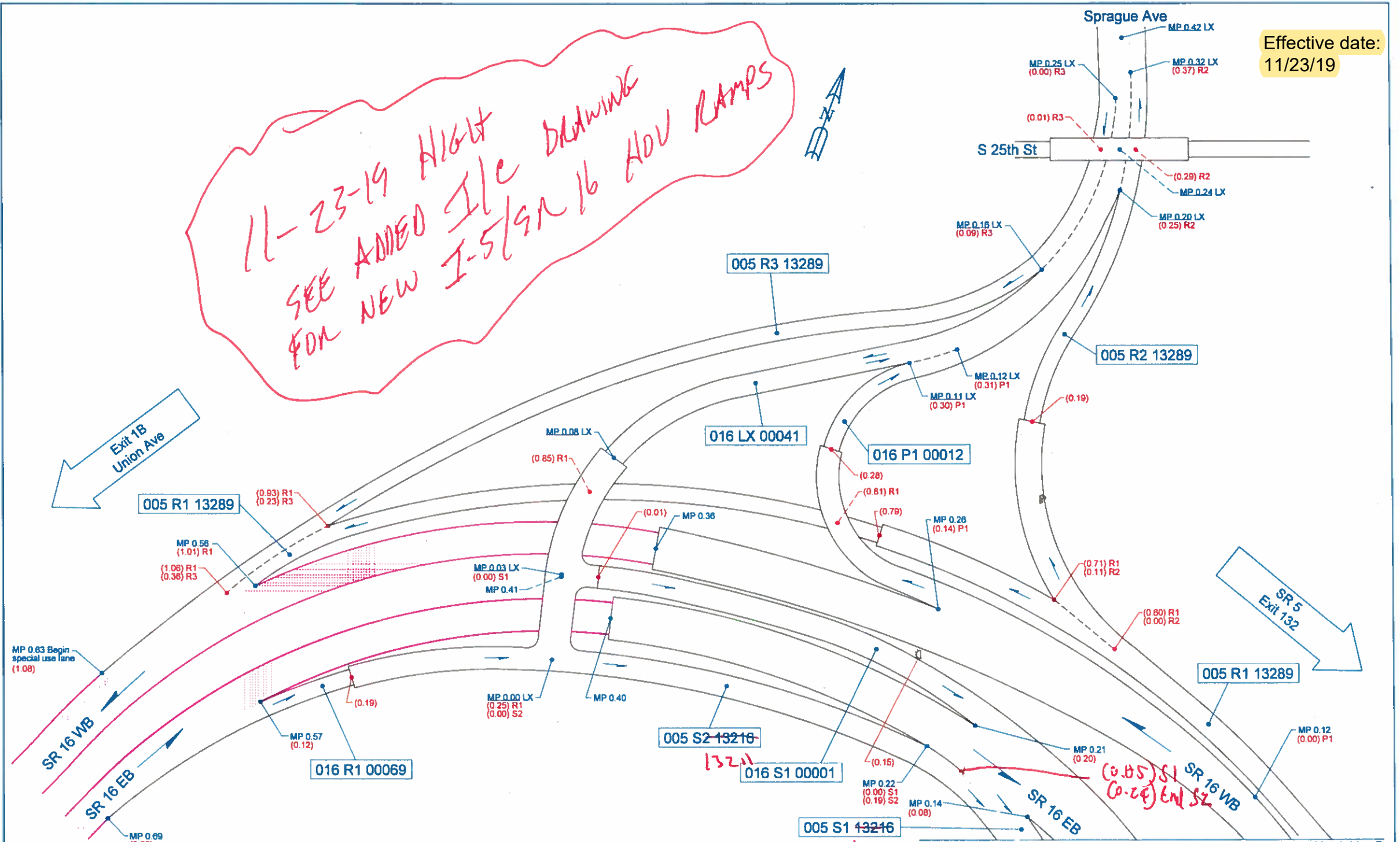
**Continue to the following pages to see the current and historical interchange configurations.**

### *Did you know...?*

- You can download the PDF file to your computer.
- Once downloaded, you can access the layers that compose each drawing through Adobe Acrobat Reader or Pro. NOTE: Layers are not available on hand-sketches.
- [How to download and view Interchange Drawing layers in Adobe Acrobat \(PDF 115KB\)](#)

11-23-19 Hight  
SEE ADDED I/c DRAWING  
FOR NEW I-5/SR 16 HOV RAMP

Effective date:  
11/23/19



- Historical Alignment Notes:
- 1. 005 R1 13289 new ramp effective 06/25/2011
  - 2. 005 R2 13289 new ramp effective 06/25/2011, 005 R2 13289 realigned effective 08/17/2014
  - 3. 005 R3 13289 new ramp effective 06/25/2011, 005 R3 13289 realigned effective 08/17/2014
  - 4. 005 S1 13216 realigned effective 07/12/2014
  - 5. 005 S2 13216 new ramp effective 07/12/2014
  - 6. 016 LX 00041 new ramp effective 08/17/2014
  - 7. 016 P1 00012 new ramp effective 06/25/2011, 016 P1 00012 realigned effective 08/17/2014
  - 8. 016 R1 00069 realigned effective 08/17/2014
  - 9. 016 S1 00001 new ramp effective 08/17/2014

