

# Pinto Creek



# Pinto Creek Bridge

9 Span constructed in 1949

National Register of Historic Places

710 feet long

35 feet wide

Classified as Structurally Deficient

68 Mile

4 Span constructed in 2022

695 ½ feet long

47 feet 2 inches wide

On a horizontal spiral curve that transitions into a tangent section

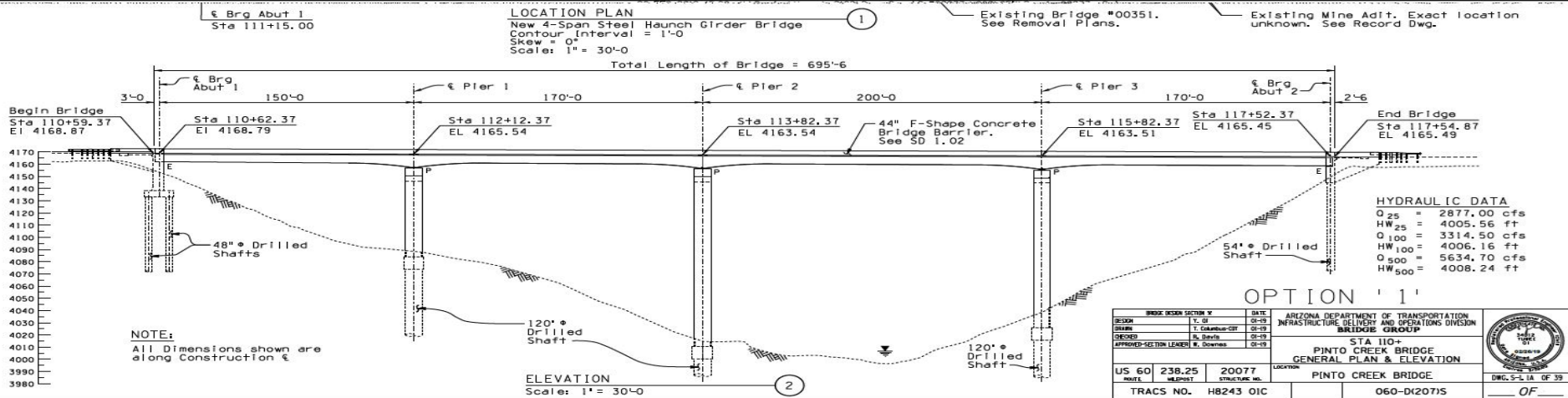
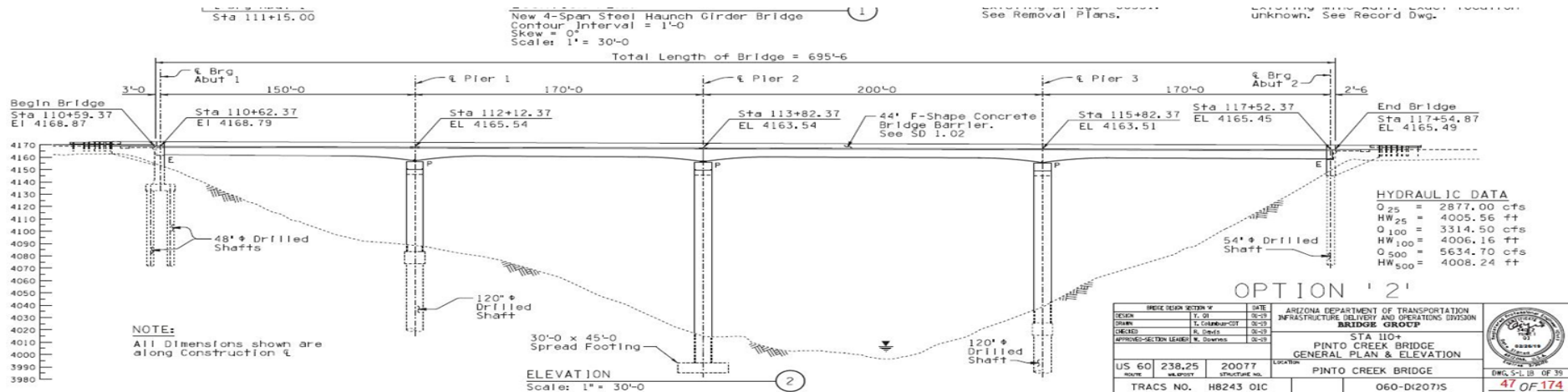


# Aerial View





# 2 Foundation Options at Bid



# Retaining Wall Micropiles





# Construction Issues



# Telegraph Fire



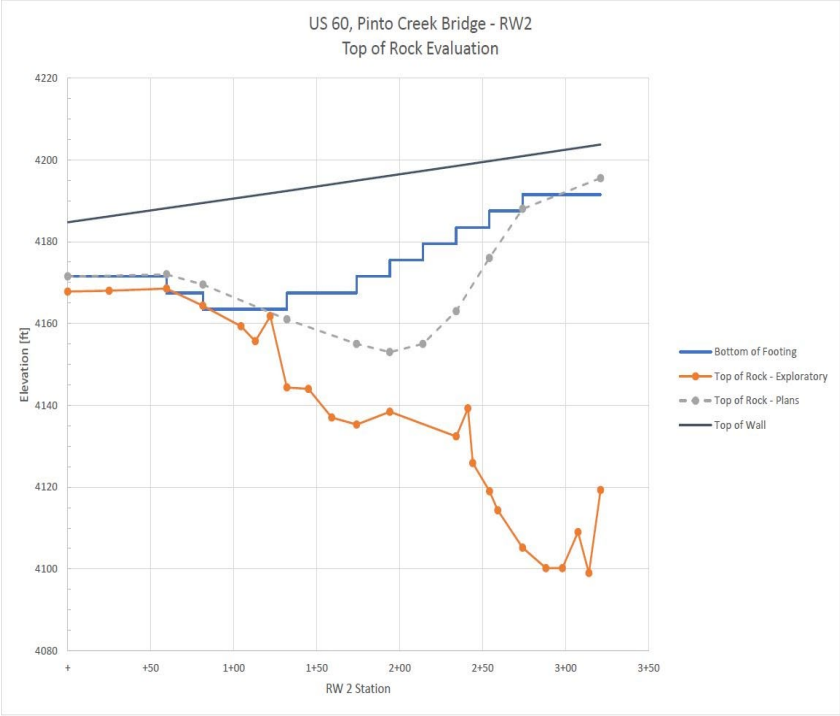
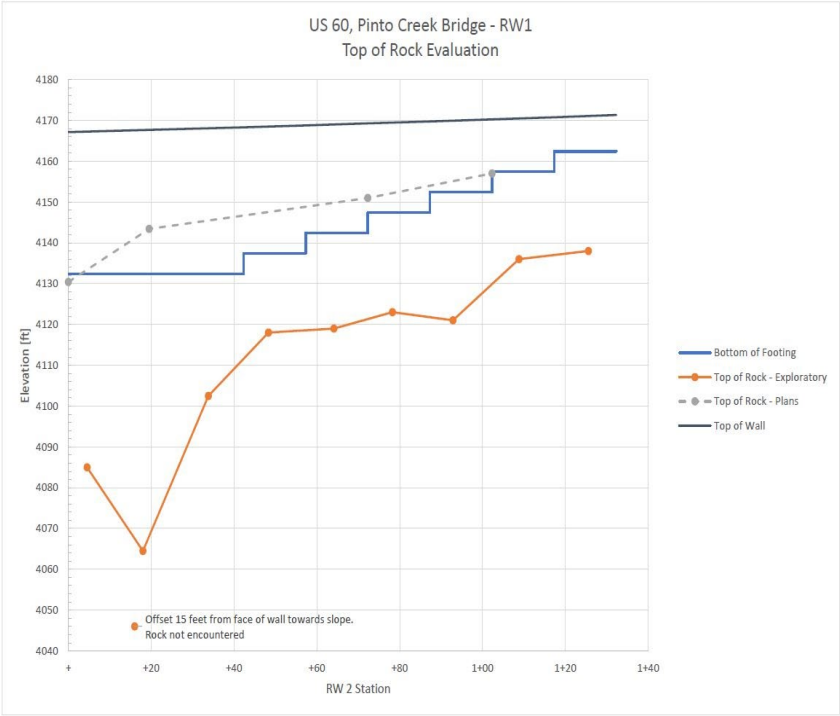


# Flood





# Earth - Retaining Walls



# Environmental Concerns





## Hedgehog Cactus



## Restoration





**GROUND LEVEL DEMOLITION**





