

Design & Construction of 2nd Street Connector



CITY OF SACRAMENTO- OWNER

WSP- DESIGNER

MYERS & SON- CONTRACTOR

DRAKE HAGLAN- RE

ALI SEYEDMADANI PHD, PE

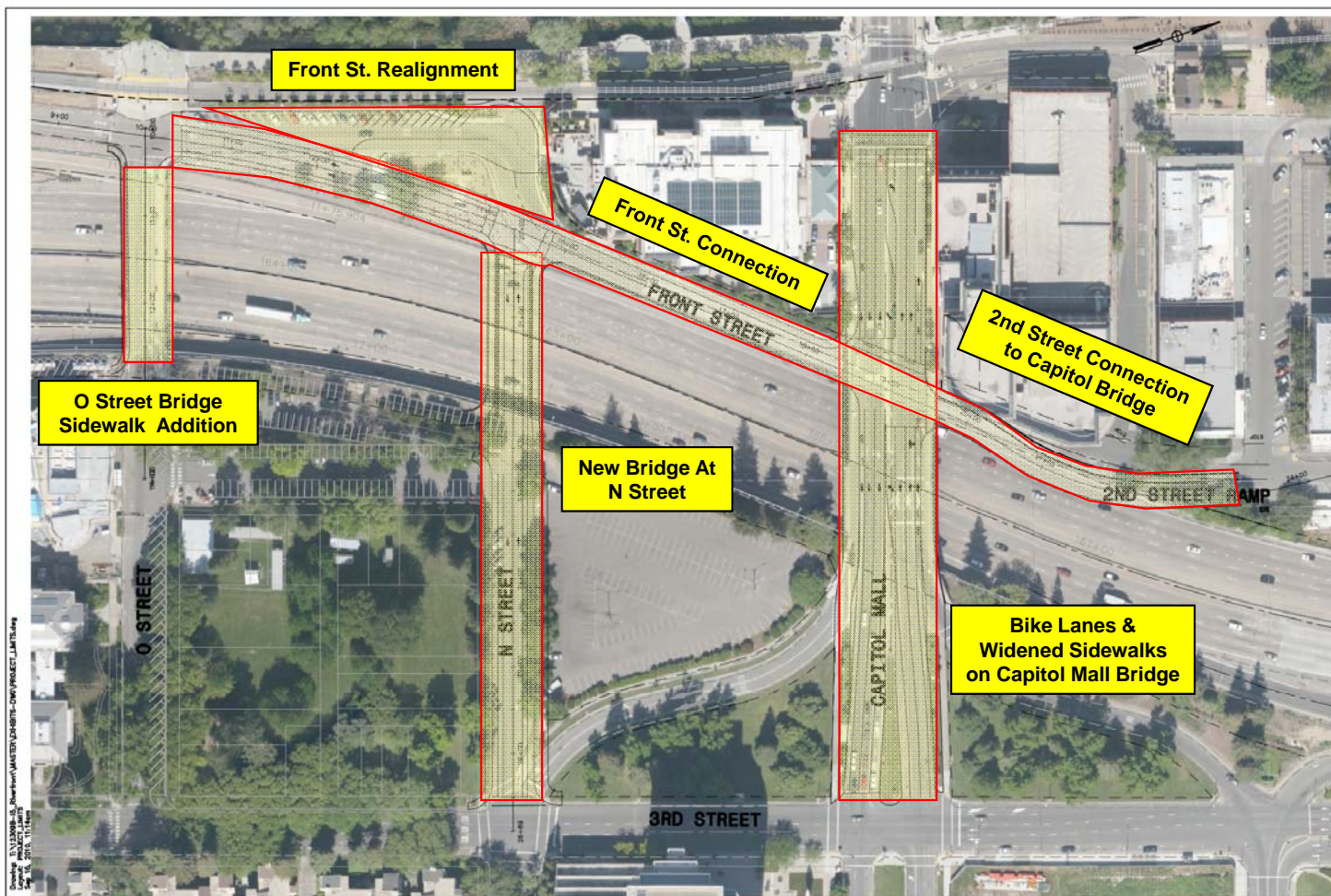
WBES 2017



I-5 Riverfront Reconnection Project



Ultimate Project



Drawing: I-5 RIVERFRONT RECONNECTION PROJECT - OVERHEAD PLAN - 100%
Scale: 1" = 100'
Date: 11/11/2014



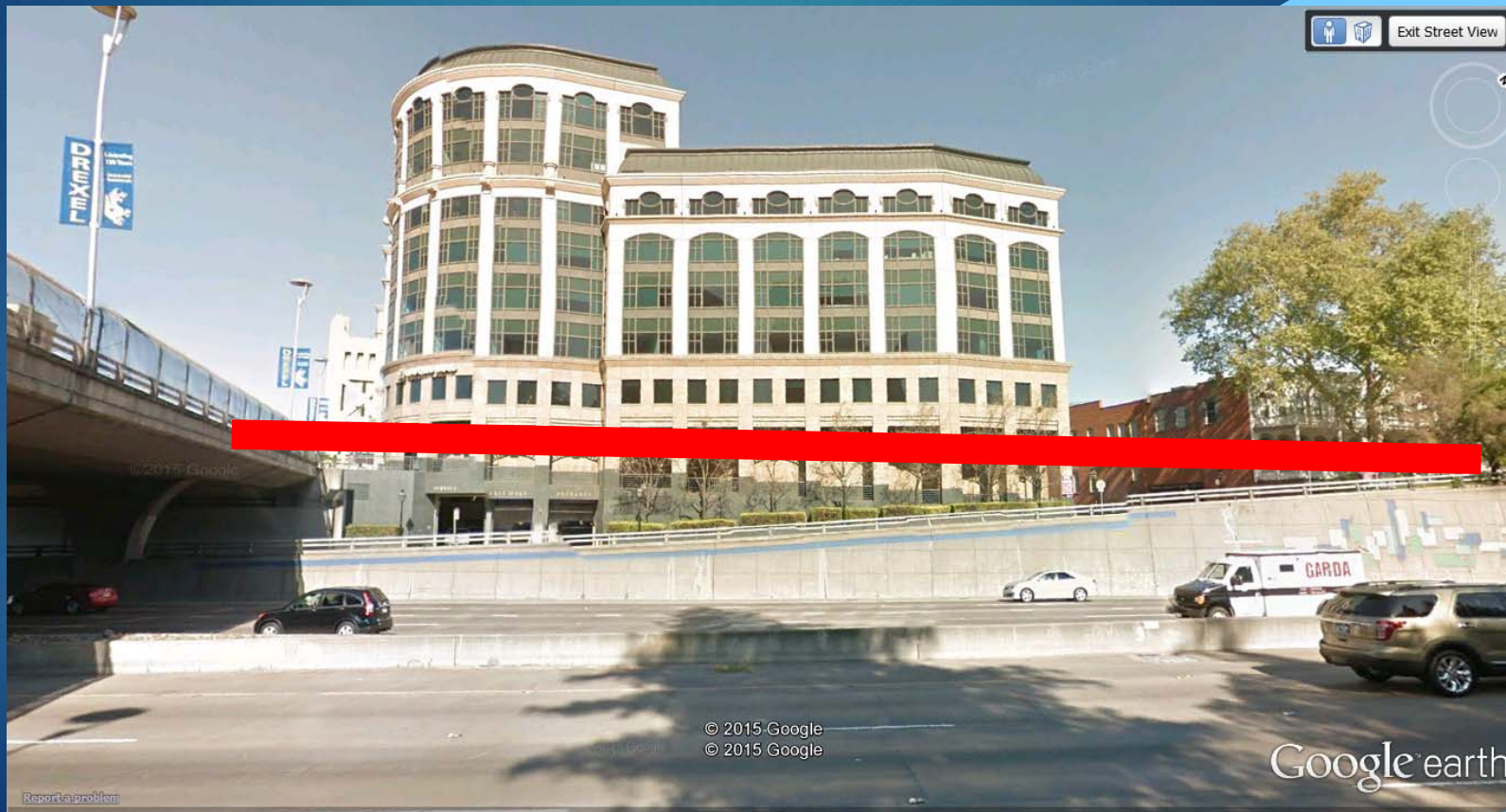
**I-5 RIVERFRONT RECONNECTION PROJECT
ALTERNATIVE - 3**



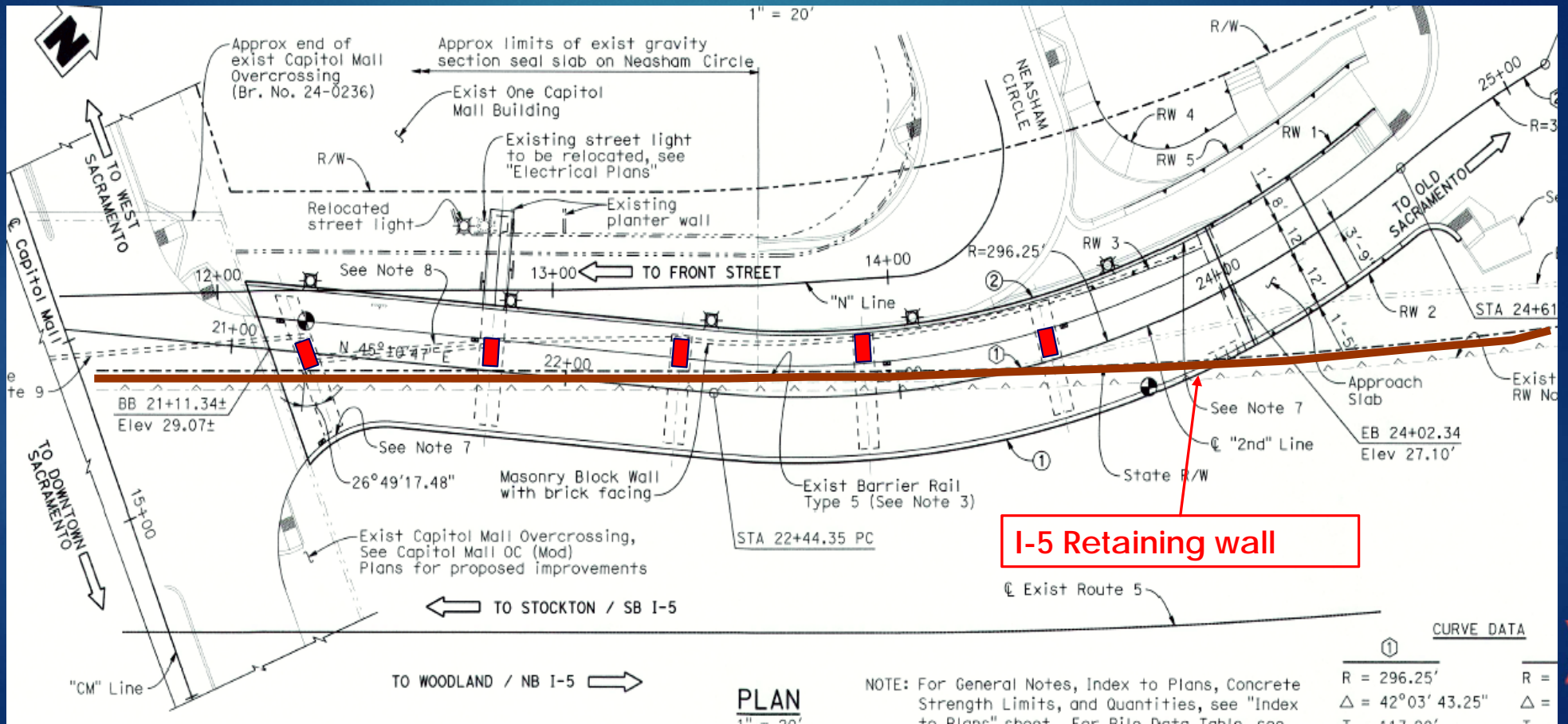
2nd Street/ Neasham Circle



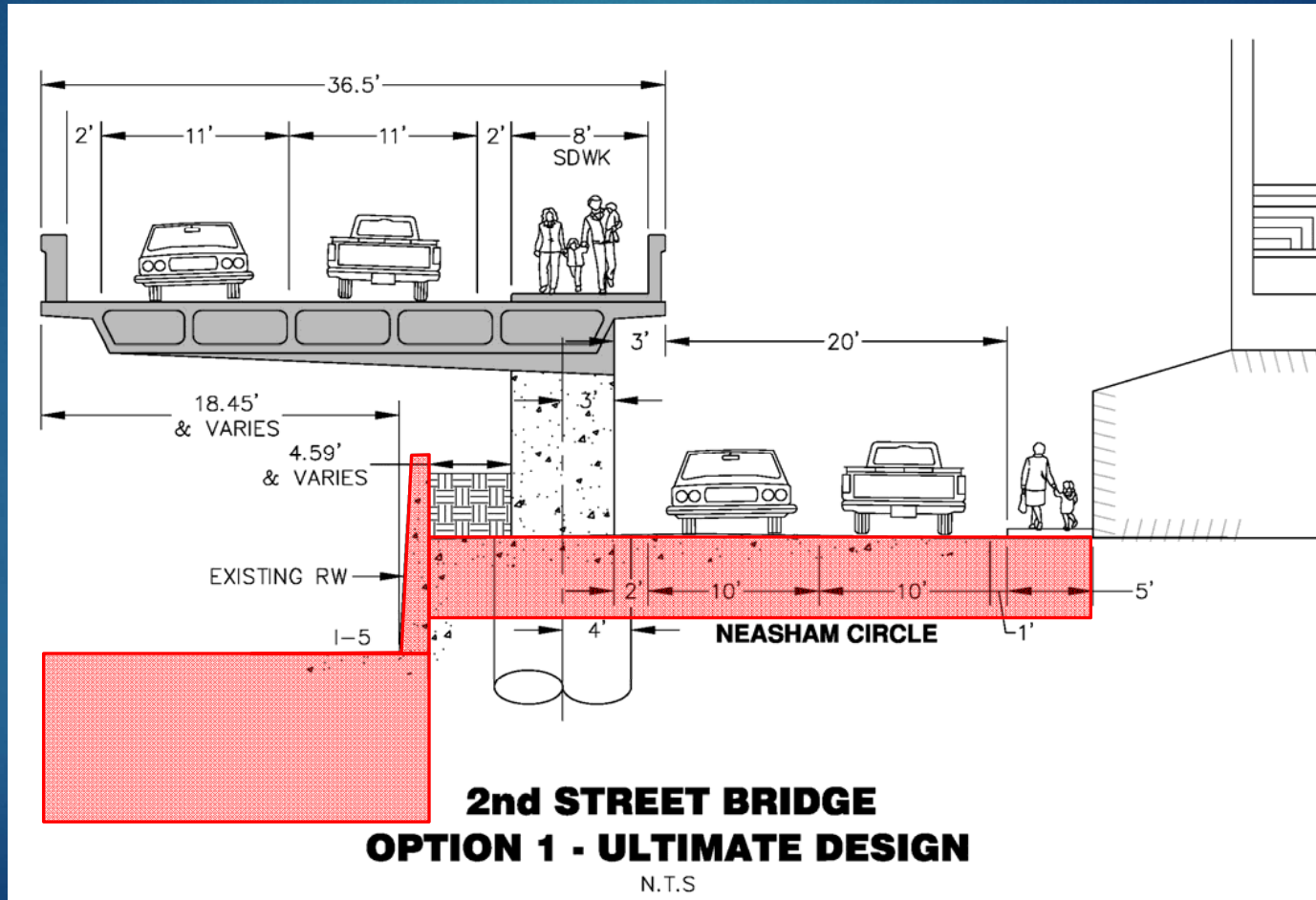
Bridge Profile



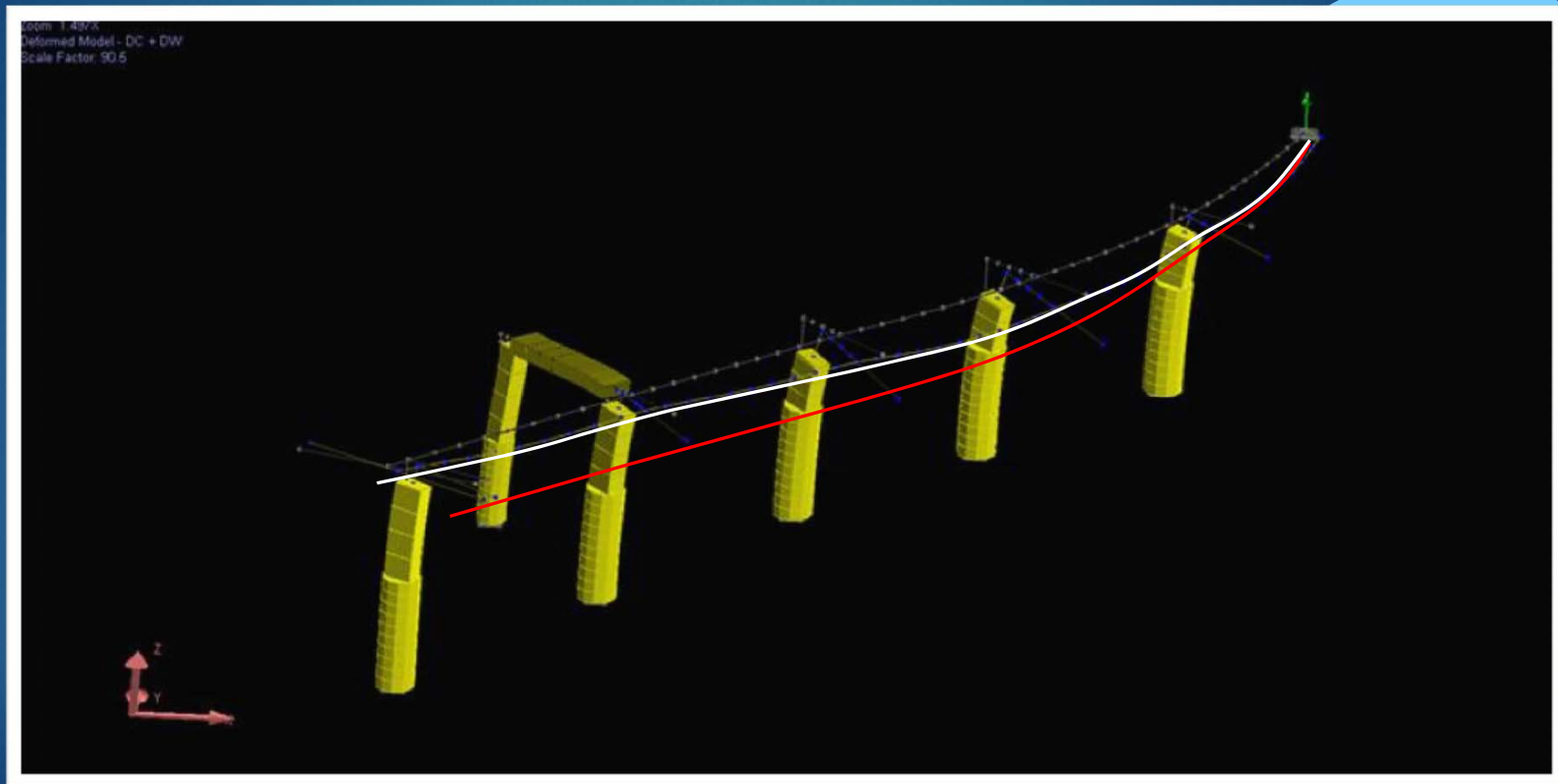
Bridge Layout



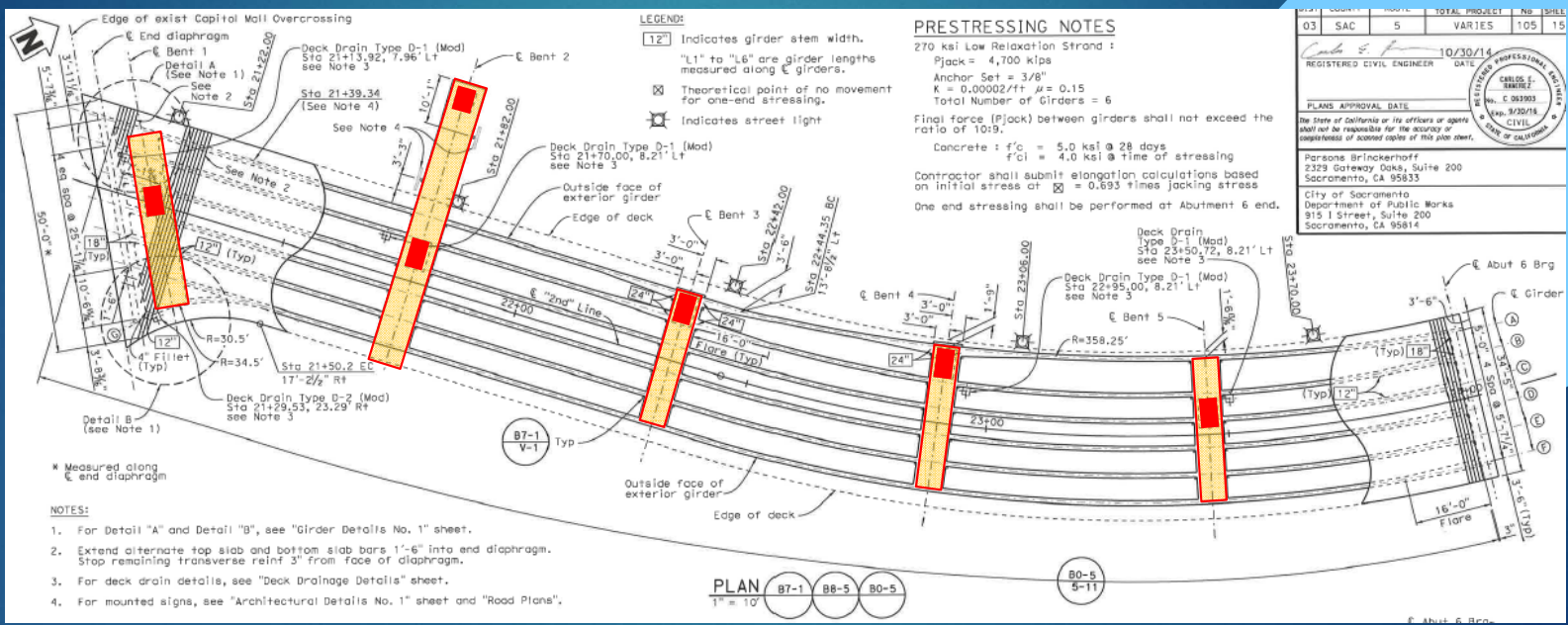
Typical Section



Seismic Displacement Demand



Framing Plan



NO.	QUANTITY	UNIT	TOTAL PROJECT	NO. SHEET
03	SAC	5	VARIES	105 15

REGISTERED CIVIL ENGINEER DATE 10/30/14
 CARLOS J. TORRES
 No. C 98303
 Exp. 7/30/18
 CIVIL
 STATE OF CALIFORNIA

PLANS APPROVAL DATE: _____
 The State of California or its officers or agents shall not be responsible for the accuracy or completeness of accepted copies of this plan sheet.

Parsons Brinckerhoff
 2323 Gateway Oaks, Suite 200
 Sacramento, CA 95833

City of Sacramento
 Department of Public Works
 315 I Street, Suite 200
 Sacramento, CA 95814



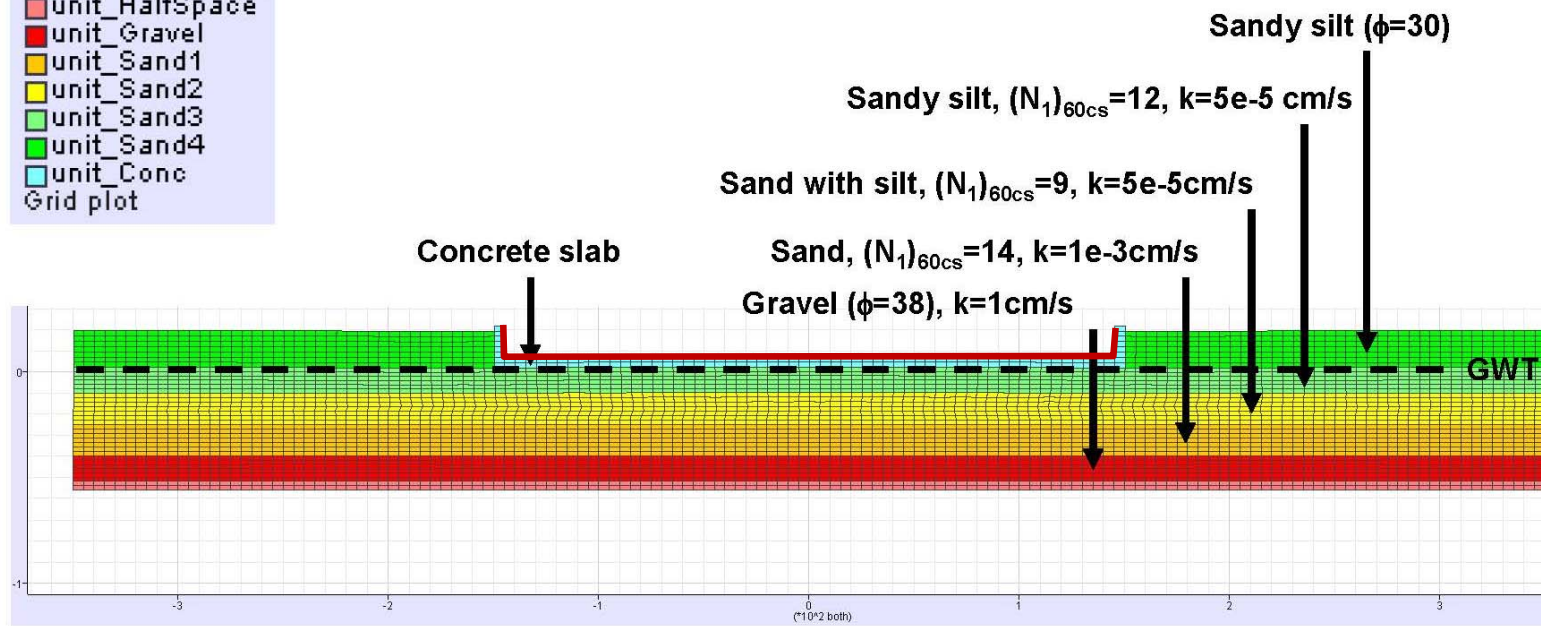
FLAC Model

10

FLAC model



- unit_HalfSpace
- unit_Gravel
- unit_Sand1
- unit_Sand2
- unit_Sand3
- unit_Sand4
- unit_Conc
- Grid plot

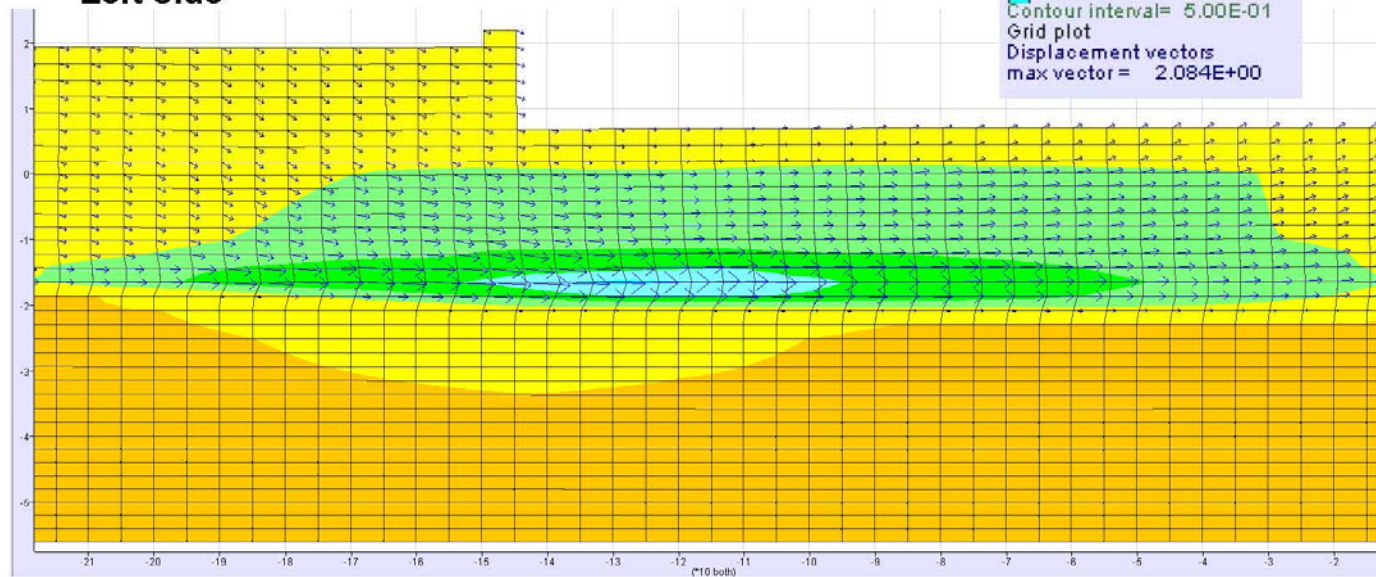


Horizontal displacements (end of shaking)

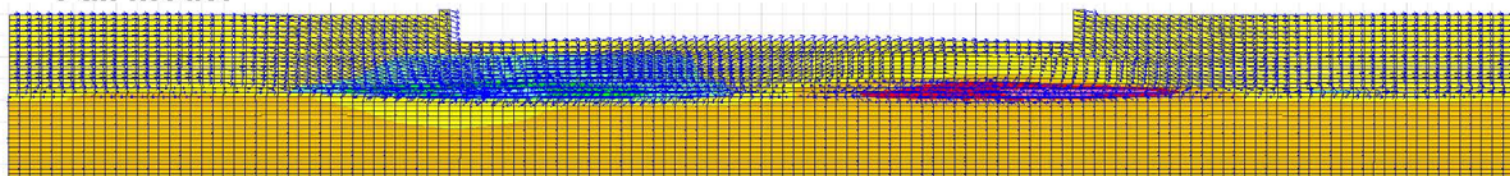


X-displacement contours
-1.00E+00
-5.00E-01
0.00E+00
5.00E-01
1.00E+00
1.50E+00
2.00E+00
Contour interval= 5.00E-01
Grid plot
Displacement vectors
max vector = 2.084E+00

Left side

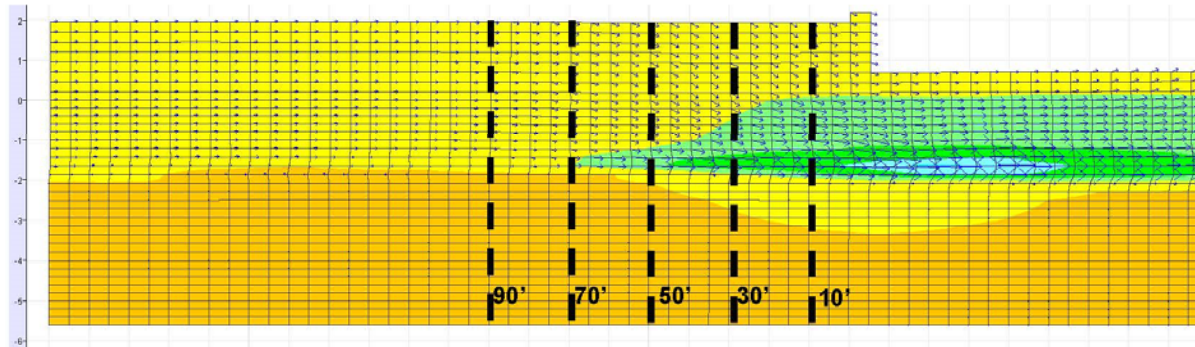
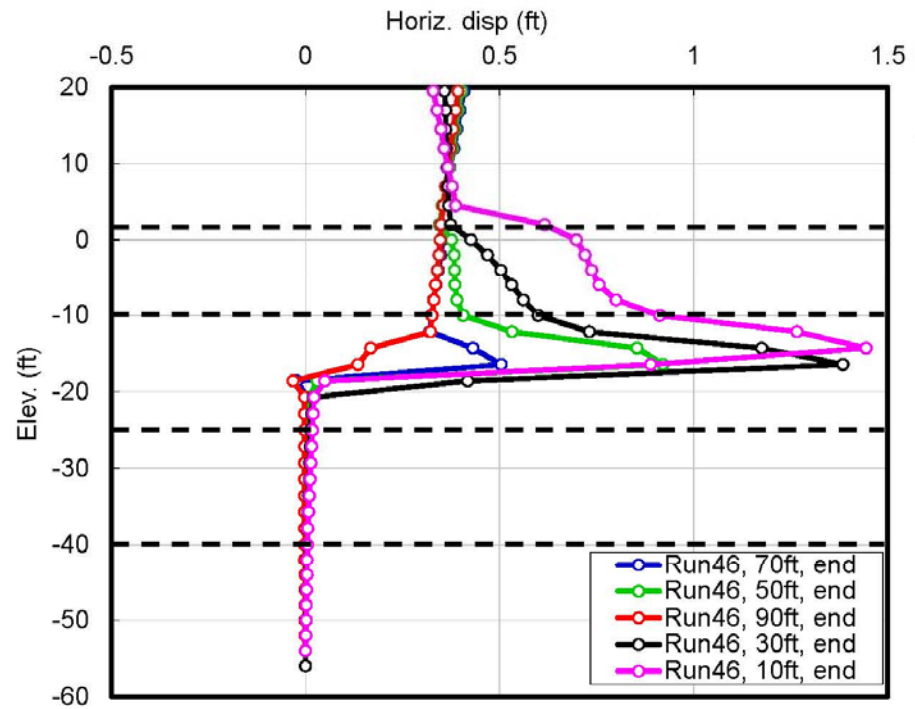


Full model



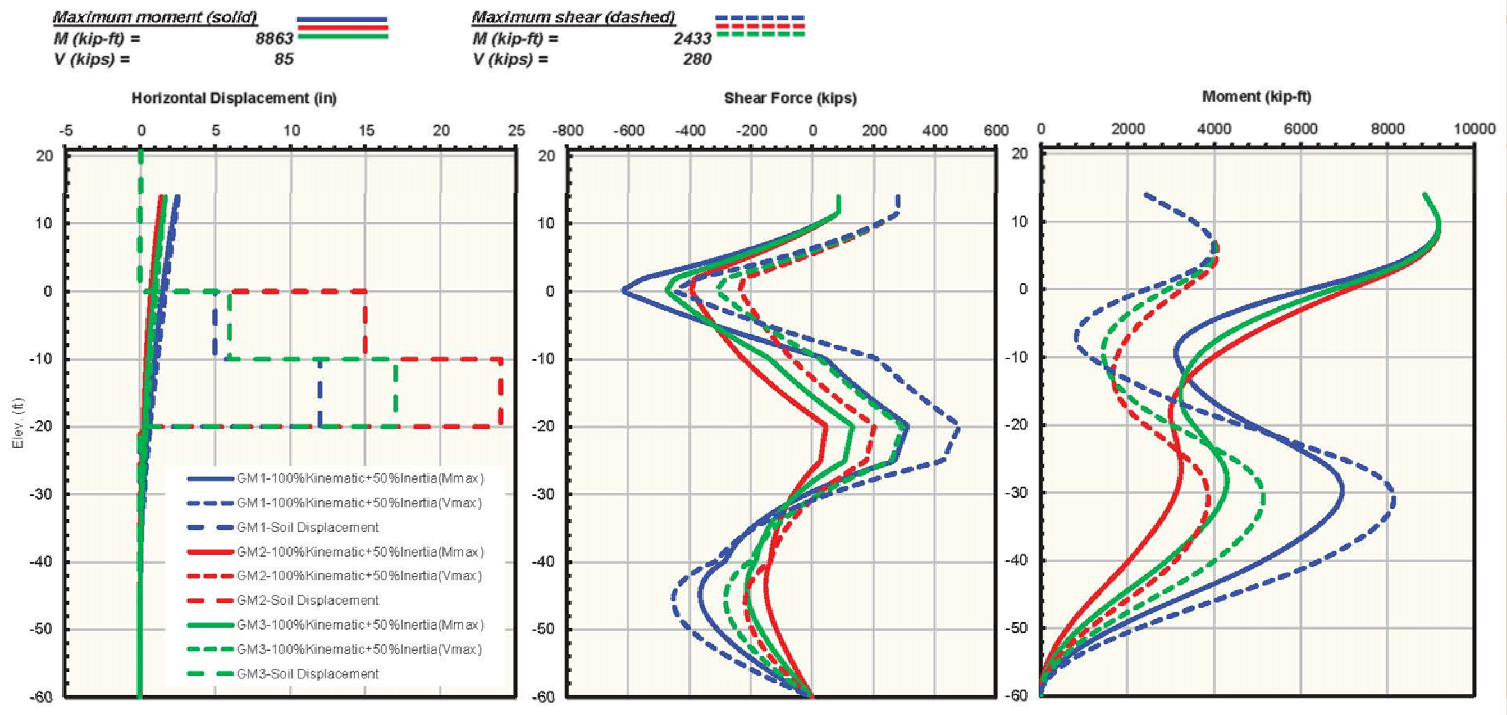
Horizontal displacements (end of shaking)

X-displacement contours
 -1.00E+00
 -5.00E-01
 0.00E+00
 5.00E-01
 1.00E+00
 1.50E+00
 2.00E+00
 Contour interval= 5.00E-01
 Grid plot
 Displacement vectors
 max vector = 2.084E+00



Pile Displacements

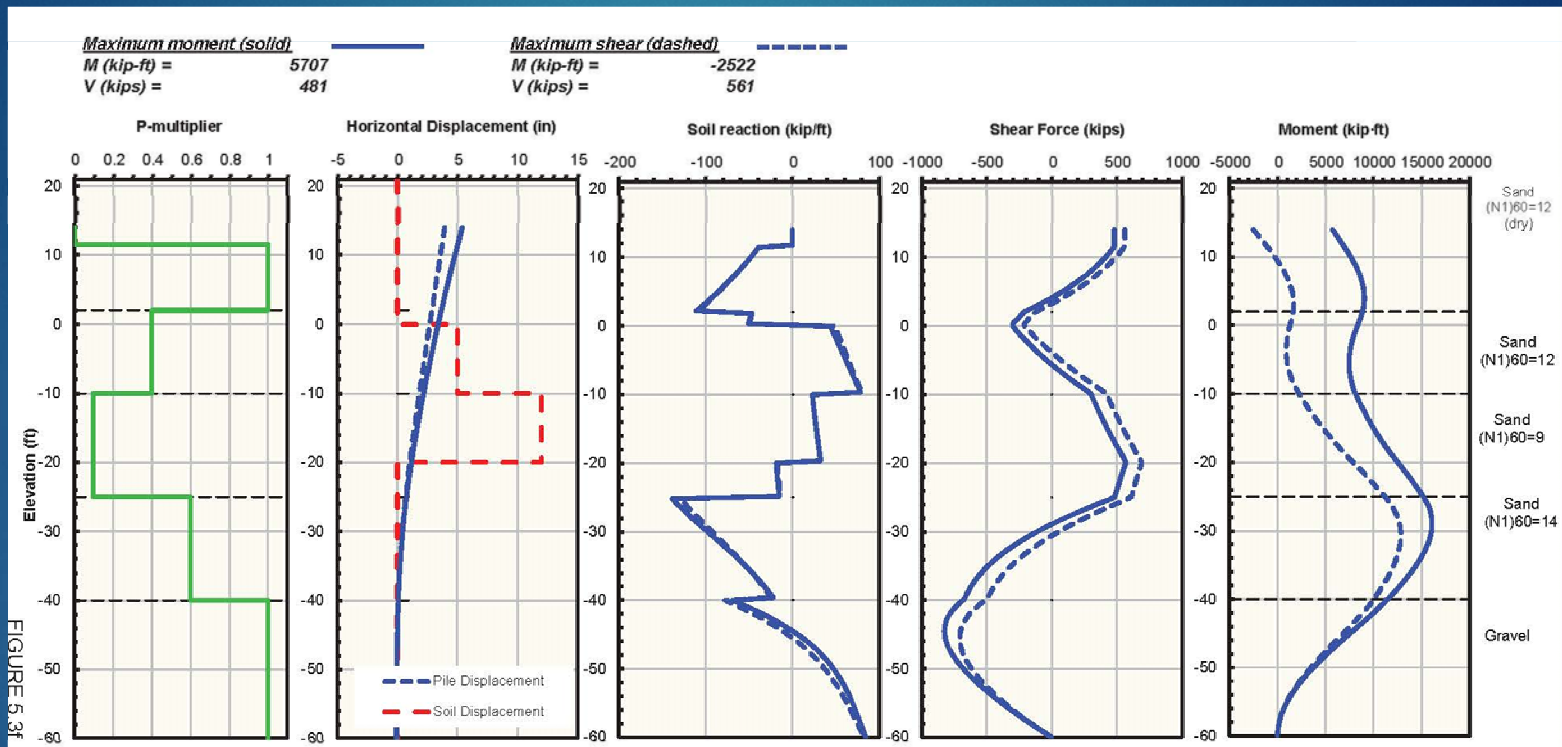
FIGURE 5.5



**PILE DISPLACEMENT, SHEAR, AND MOMENT FOR BENT 5
 COMPARISON BETWEEN 3 GMS
 LIQUEFIED CASE, 100% OF KINEMATIC DEMANDS PLUS 50% OF ELASTIC INERTIAL DEMANDS**

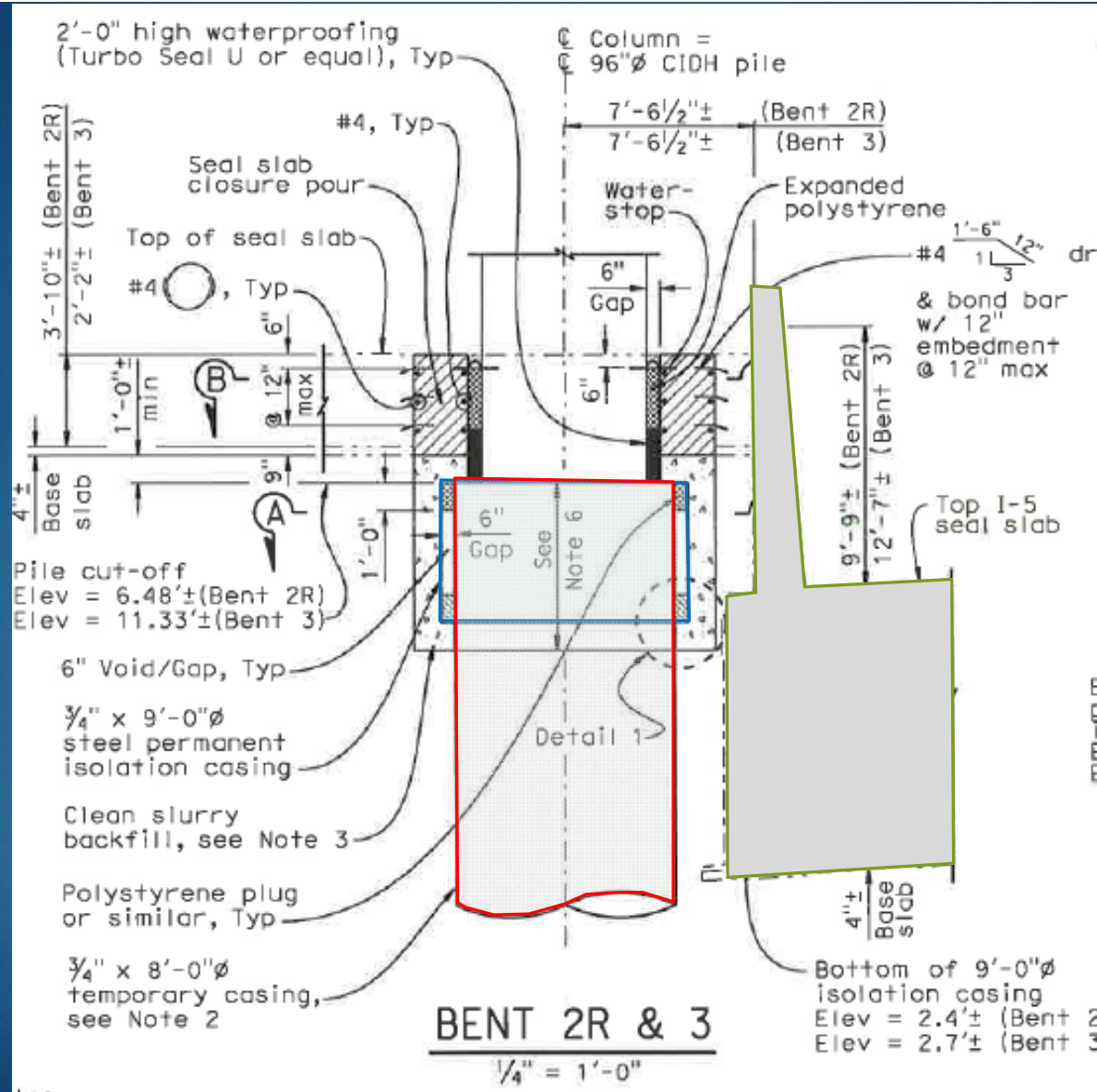


Pile Displacement



**PILE DISPLACEMENT, SHEAR, AND MOMENT FOR BENT 5
LIQUEFIED CASE, 100% OF KINEMATIC DEMANDS BASED ON GM1, 100% OF PLASTIC DEMANDS**





Seal Slab Excavation



Construction Site



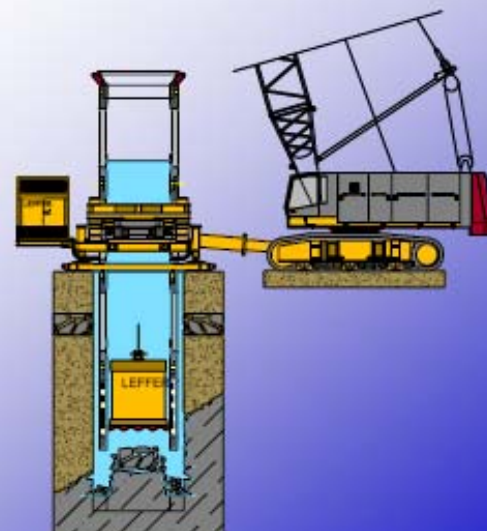
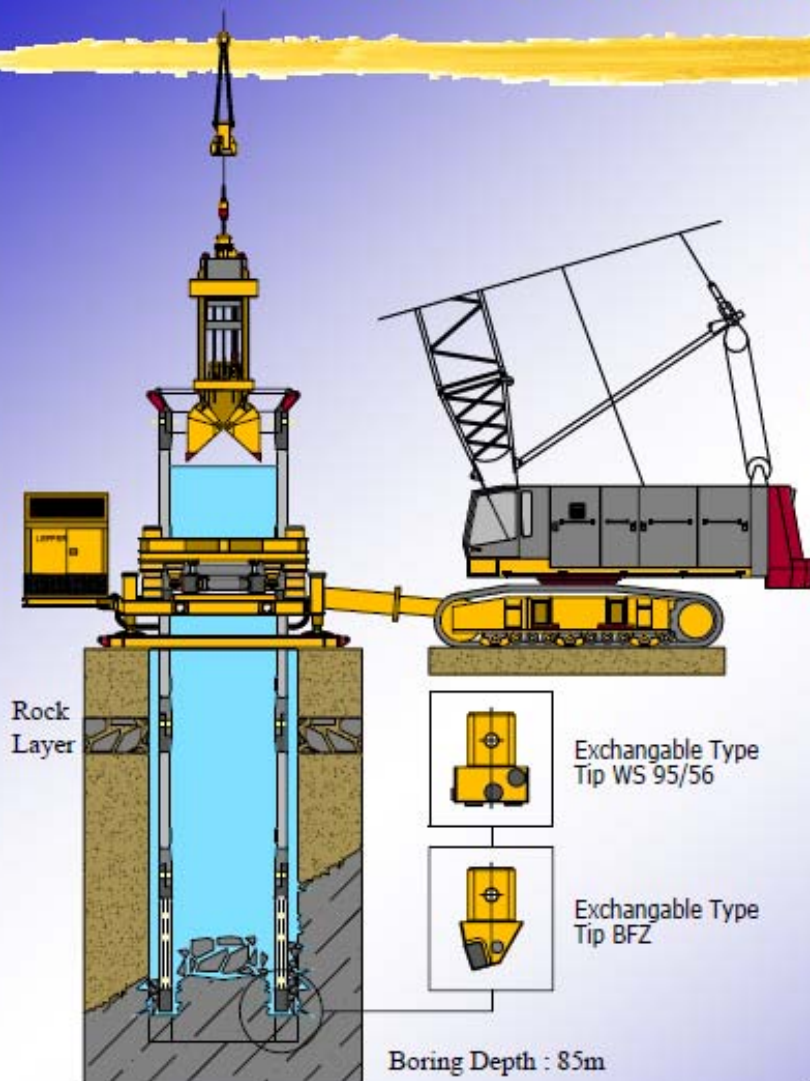
Oscillator and Rotator Drilled Shafts



Diameter Possibility: 1,000-3,000mm

Depth Possibility Proven: 85m

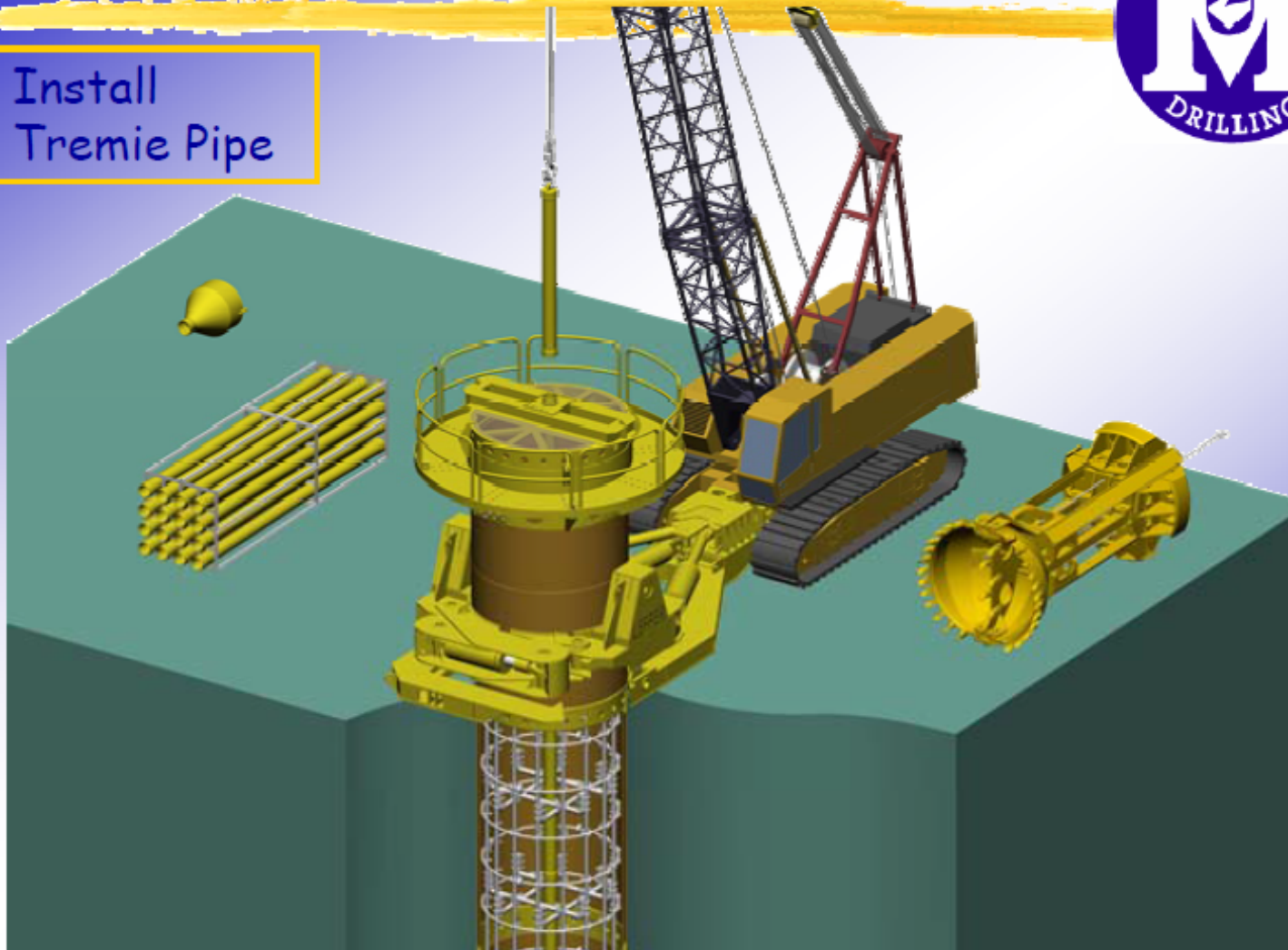
Control Device can achieve verticality of 1/300



Oscillator and Rotator Drilled Shafts



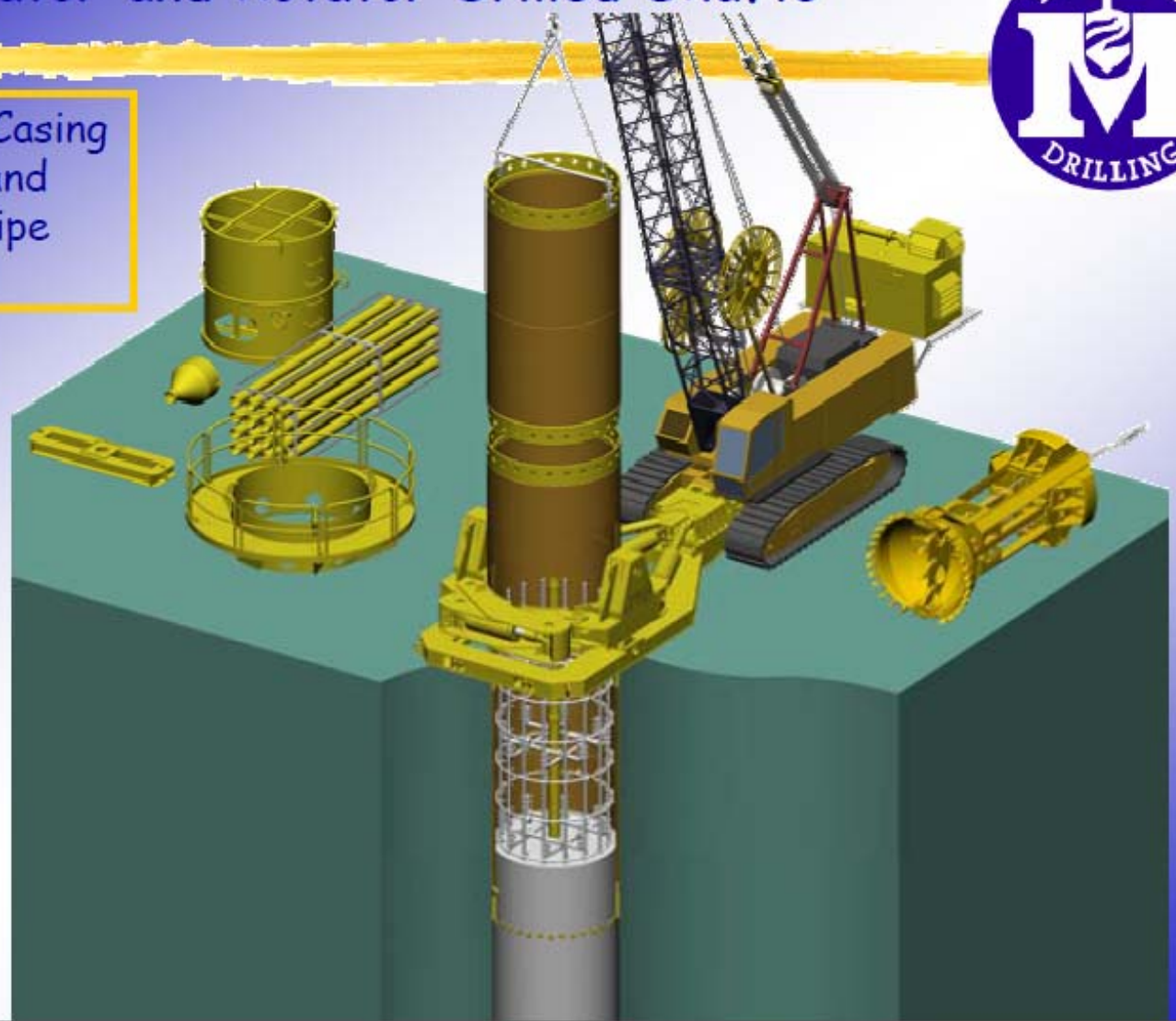
Install Tremie Pipe



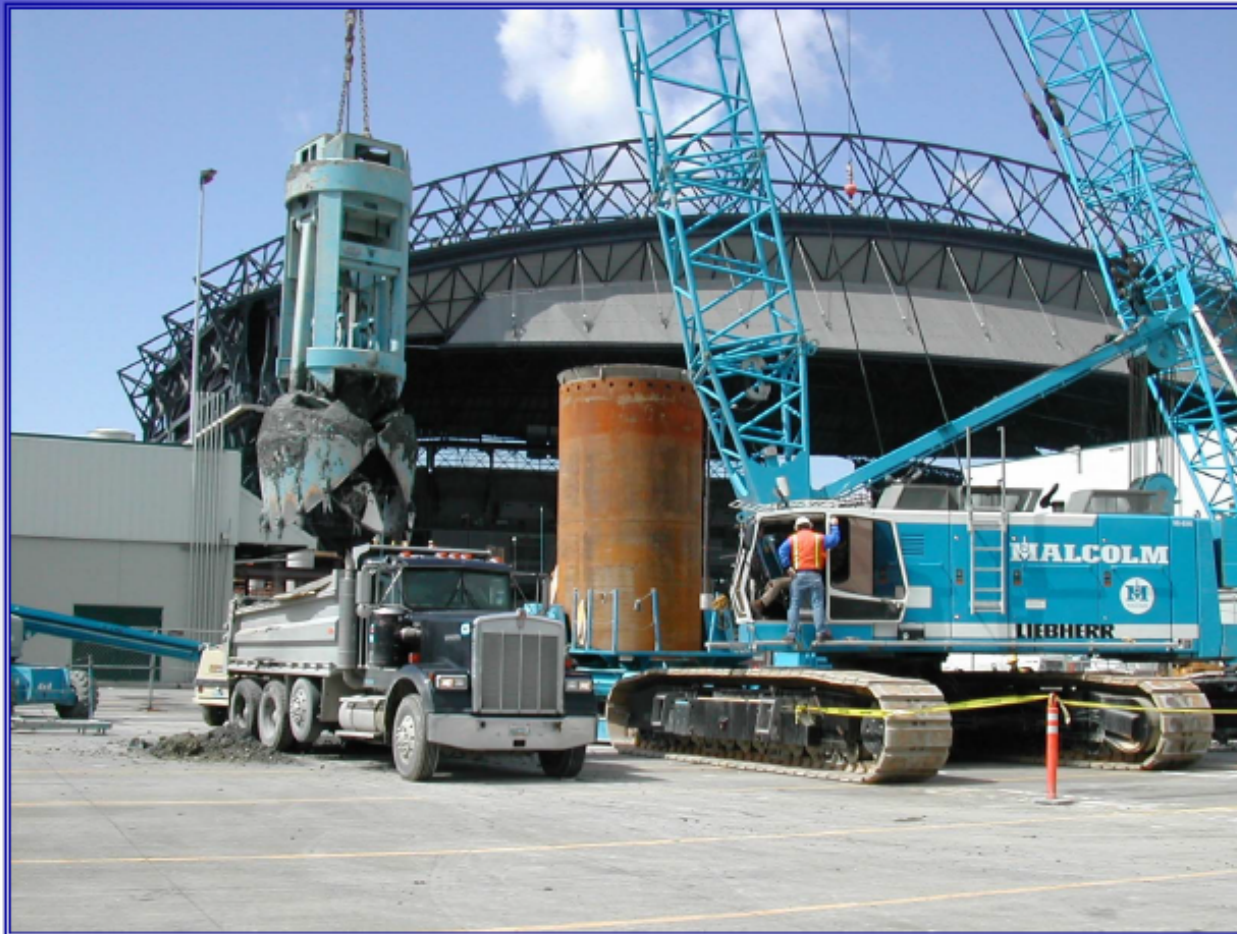
Oscillator and Rotator Drilled Shafts



Remove Casing section and tremie pipe section



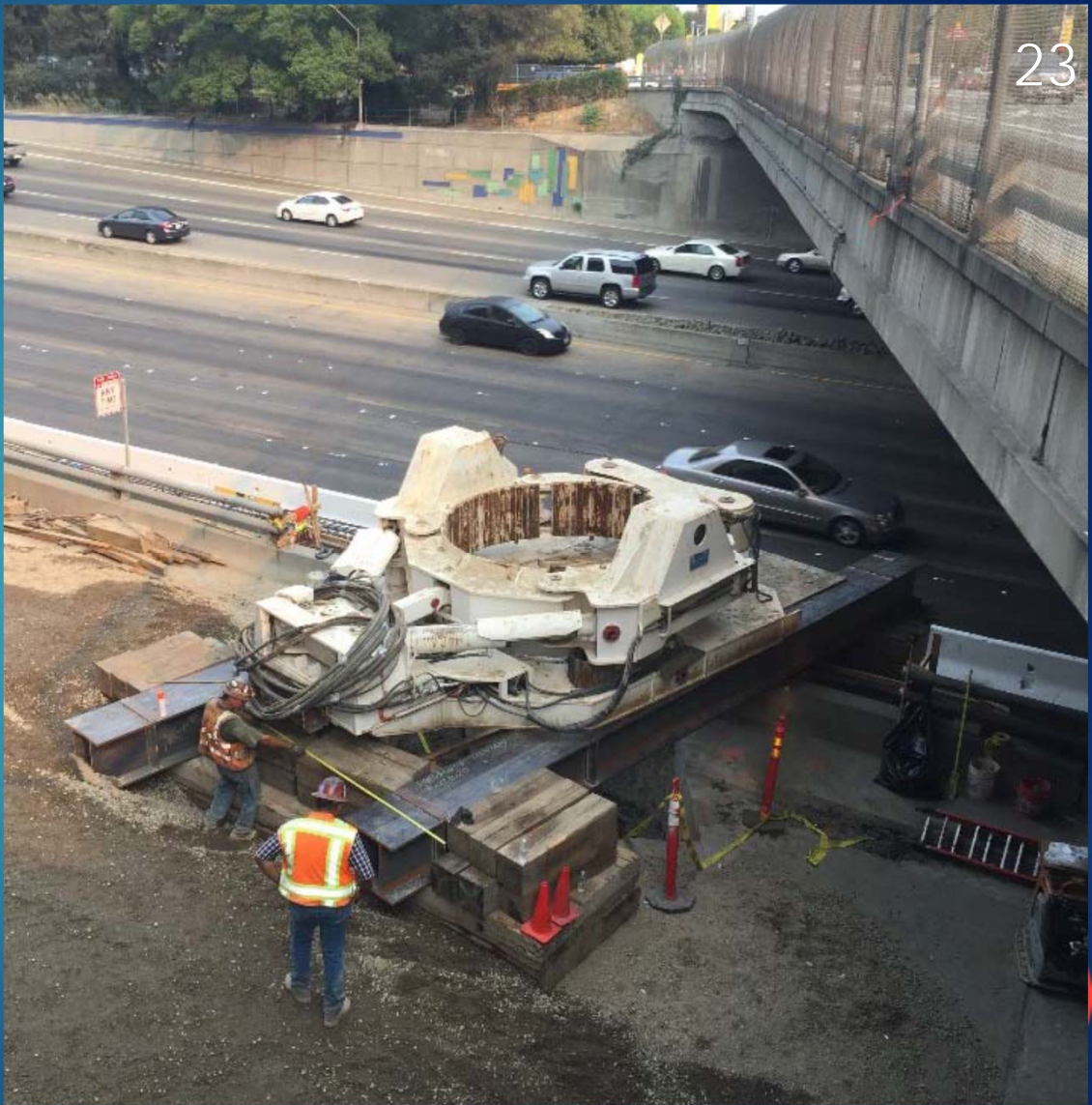
Oscillator and Rotator Drilled Shafts



Micro-pile Support



22





Drill rig platform

Oscillator Rig



Construction Site Setup













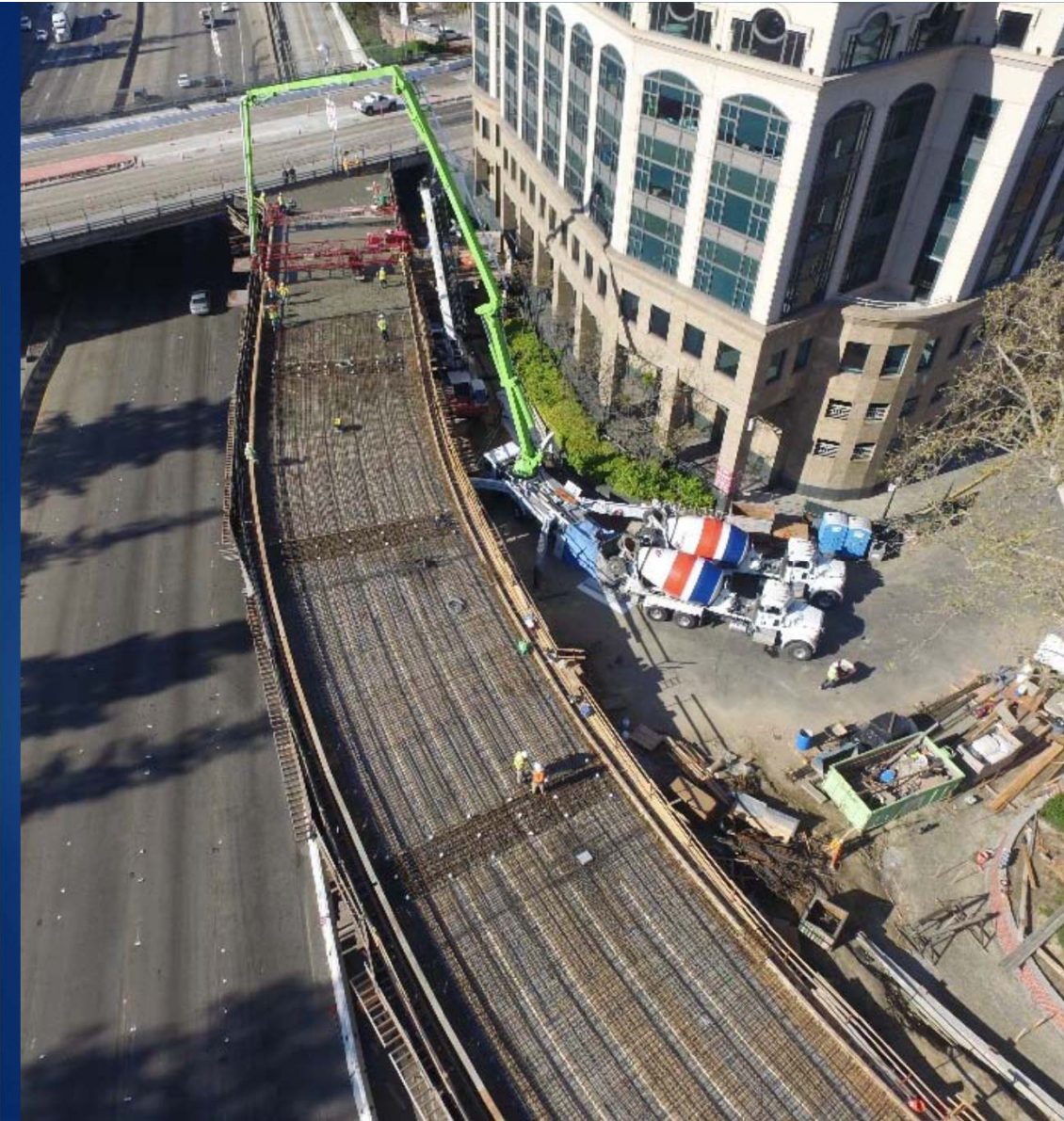






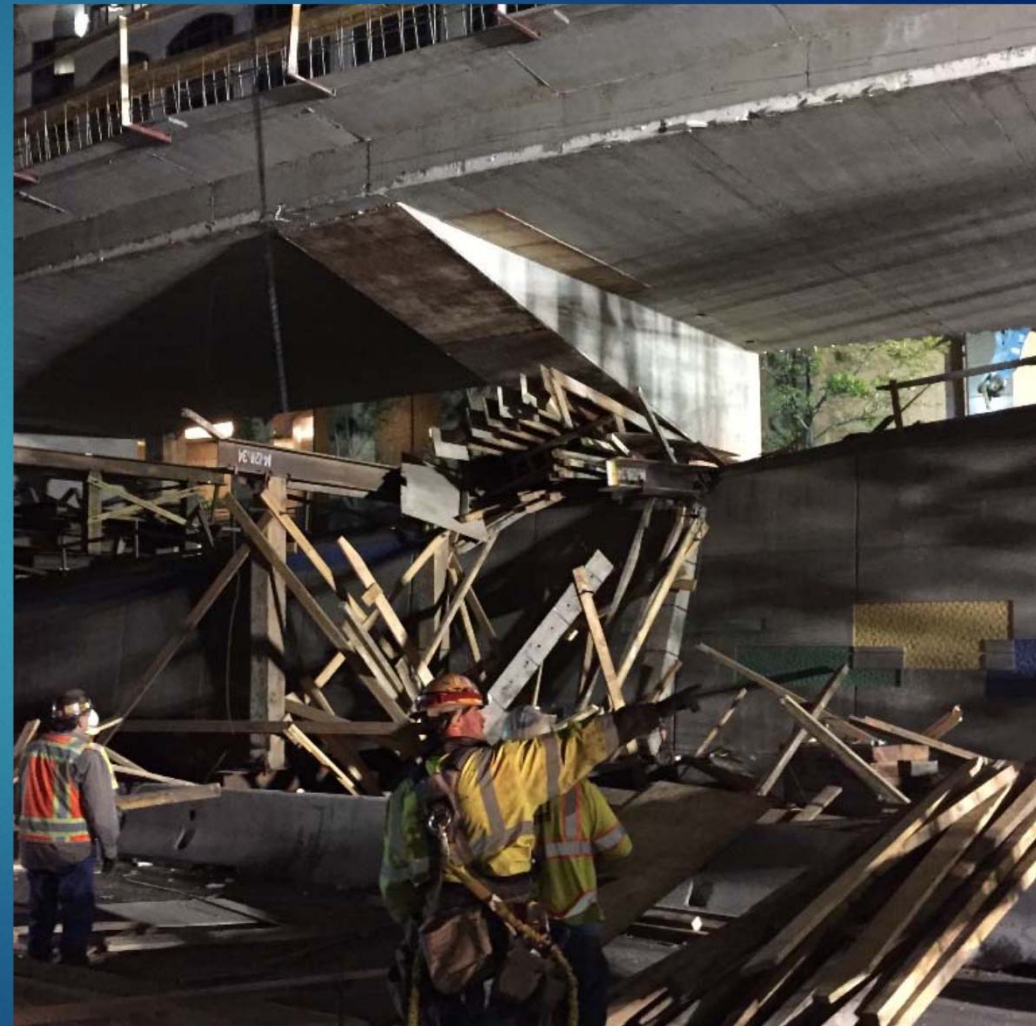






Falsework Removal

38

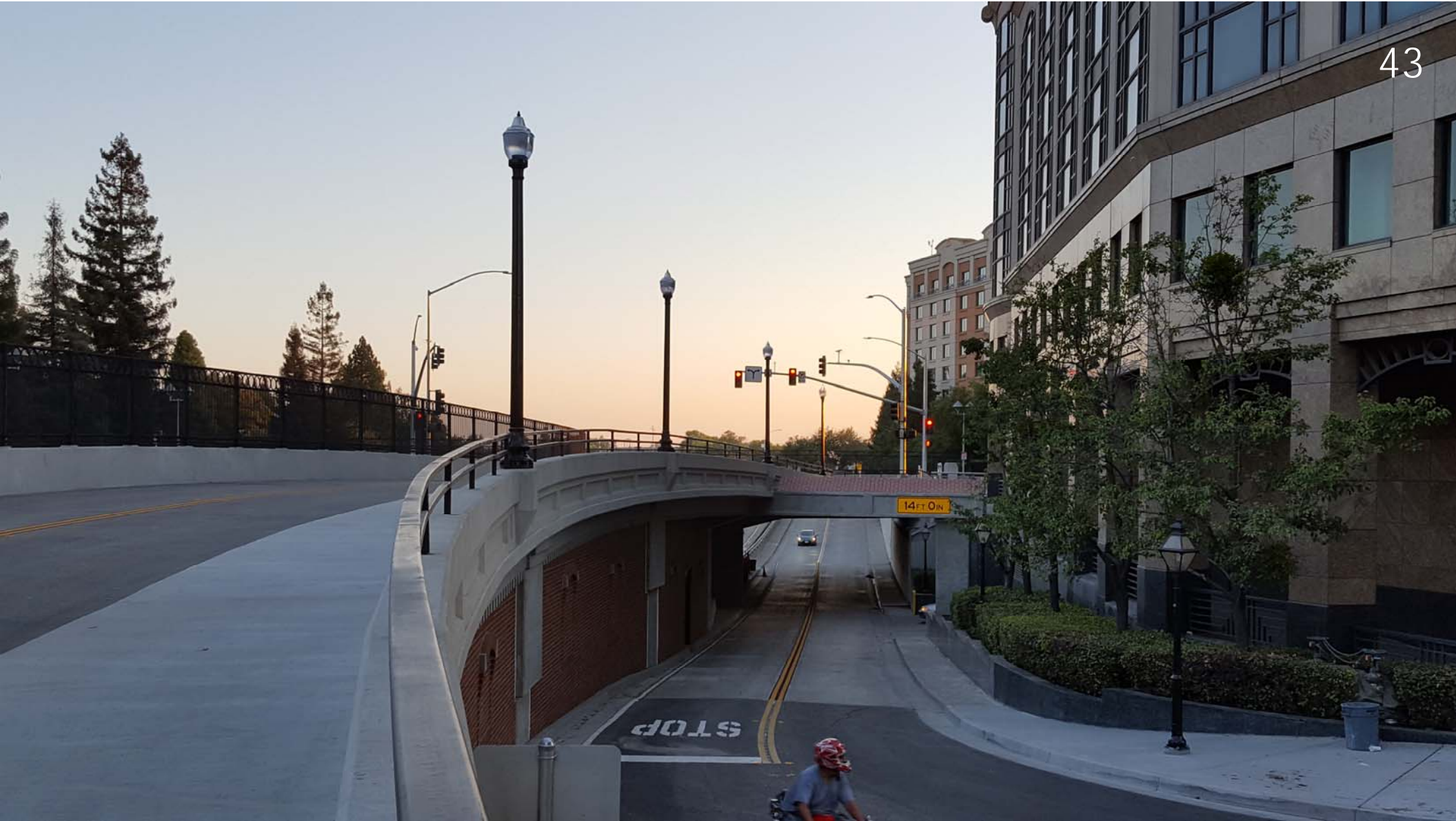
















Question?



Google Earth

report a problem

© 2017 Google
© 2017 Google