

Veterans Memorial Bridge

2013 Western Bridge Engineers'
Seminar



Photo courtesy of NDOR





Photo courtesy of NDOR

PROJECT NUMBER	BR-275-7(186)
SHEET NO.	42

C.M. 21574C
STRUCTURE NUMBER
S275 19041



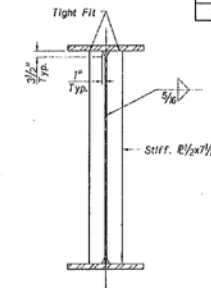
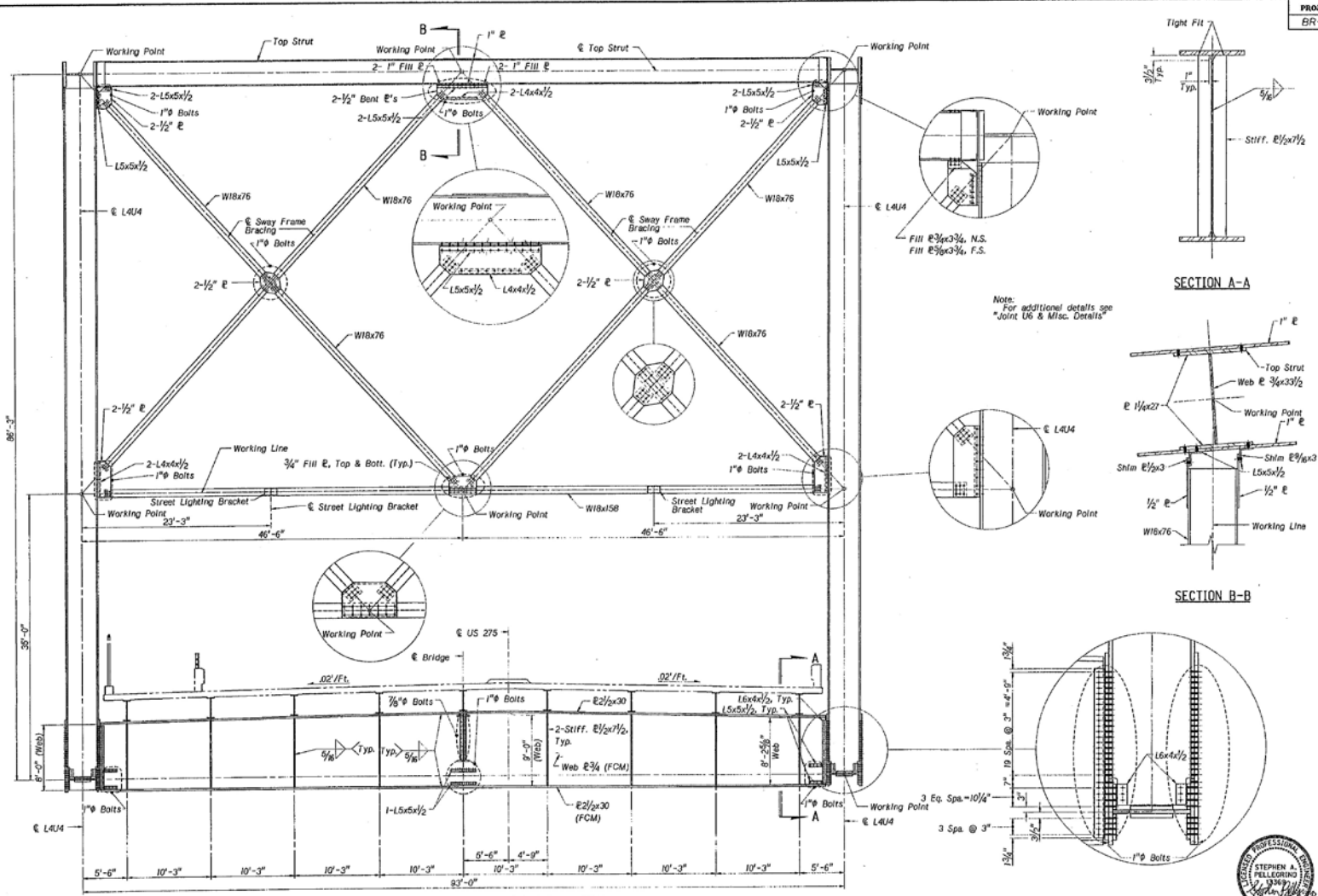
BRIDGE ENGINEER

624'-0" STEEL TRUSS BRIDGE
LOCATION: MISSOURI RIVER
POTTAWATTAMIE, IA
ROADWAY: 74'-0" SKEW 0°
TRUSS - FLOORBEAM & SWAY FRAME AT L4 DETAILS
DESIGNED BY SAP
CHECKED BY JJK
DATE: MAY 2007

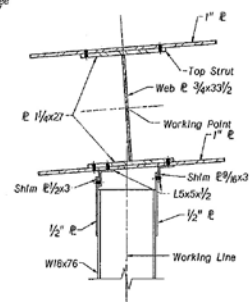
COUNTY: DOUGLAS, NE
RVTY. NO. US 275
REF. POST. 160.41 STA. 137+35.50
DESIGN LIVE LOAD: HL-93
DETAILED BY JJK



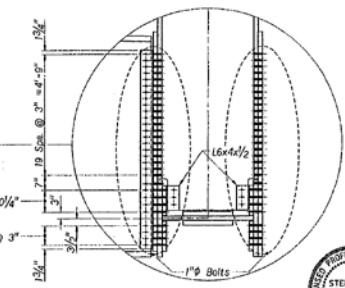
7/11/17
SPECIAL PLAN NO. 32
1 68



SECTION A-A



SECTION B-B



Note: For additional details see "Joint U6 & Misc. Details"

FLOORBEAM AND SWAY FRAME AT L4, L4' - TRUSS
Scale: 3/16" = 1'-0"

Note: All bolts 1/2" Phi ASTM A400, Type 3 unless otherwise noted.

HG HARRINGTON & CORTEYOU, INC.
Consulting Engineers







- “I” shaped members
 - Fillet welds – Single Pass
 - Configuration allows dual headed welders to be used = Faster Cycle Time
 - Members do not require intermediate stiffeners = Less Handling

- Bolted Connections
 - CNC Drilling
 - Better accuracy = Better Quality
 - Machine drilling more economical
 - Total of 102,000 holes and 45,000 Bolts
 - Shop Assembled as a check fit

- HPS 70W Material
 - Reduces Material Weight and Thickness
 - Associated Lead Time
- Weathering Material
 - Blast Only = Faster Lead Time
 - Limited Paint at Bearings

























Veterans Memorial Bridge

2013 Western Bridge Engineers'
Seminar