

San Francisco-Oakland Bay Bridge East Span Seismic Safety Project

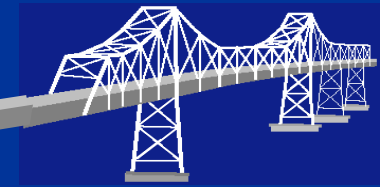
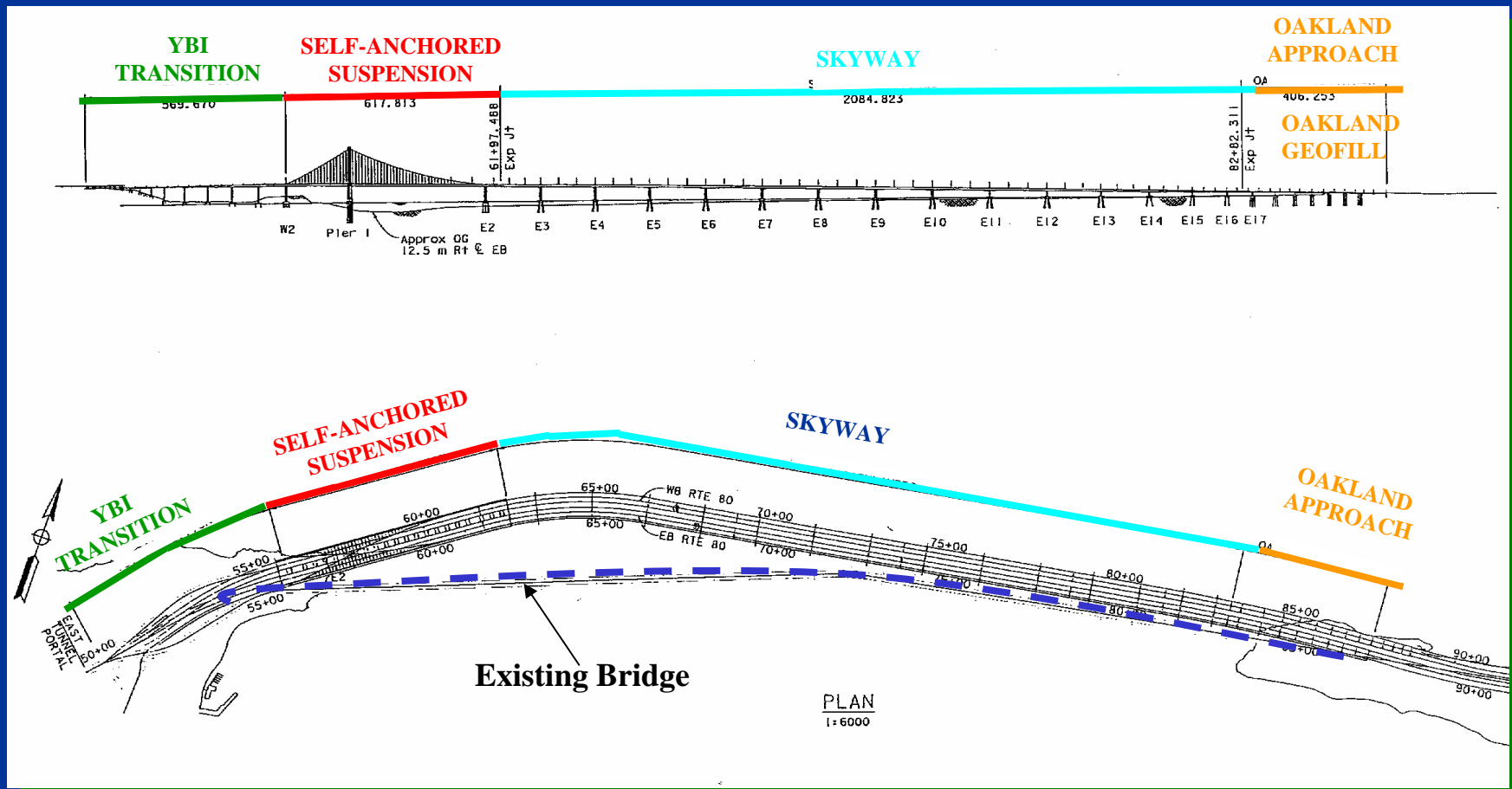
Western Bridge 2009

**Pier E9 Following the
1989 Loma Prieta Earthquake**





SFOBB East Span Segments





Pier 7



SFOBB East Span Seismic Safety Project





Transportation-Bridge Cross Section



SFOBB East Span Seismic Safety Project

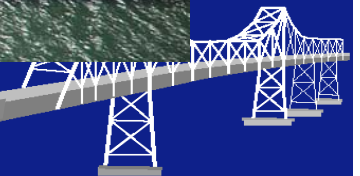




Transportation-Bridge Cross Section



SFOBB East Span Seismic Safety Project





View Looking East from YBI



SFOBB East Span Seismic Safety Project





Transportation-Bridge Cross Section



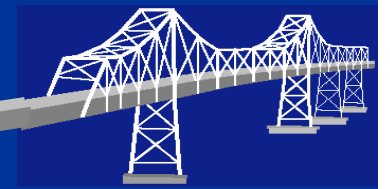
SFOBB East Span Seismic Safety Project





Title

- Companies
- Contractors
- TBSSPRP
- TBPOC





Title

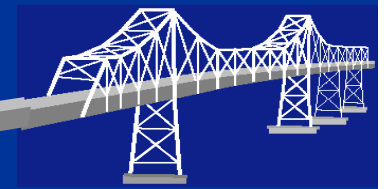
- Shop drawing tools (maybe something more)
- Pp slides





SAS

SFOBB East Span Seismic Safety Project





Heavy lift equipment is here and working



SFOBB East Span Seismic Safety Project





SAS temp works are going up



SFOBB East Span Seismic Safety Project





SAS Segments are coming together



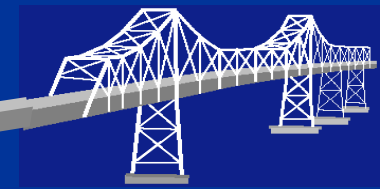
SFOBB East Span Seismic Safety Project



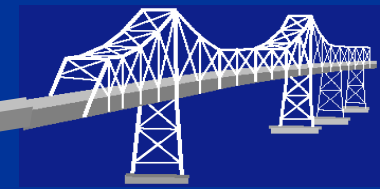




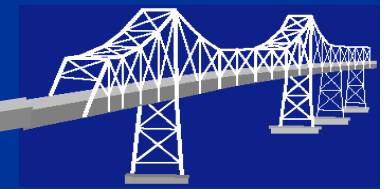




SFOBB East Span Seismic Safety Project



SFOBB East Span Seismic Safety Project



SFOBB East Span Seismic Safety Project



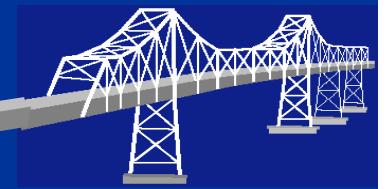






SAS-Skyway

SFOBB East Span Seismic Safety Project





Skyway and SAS Pier E2



SFOBB East Span Seismic Safety Project

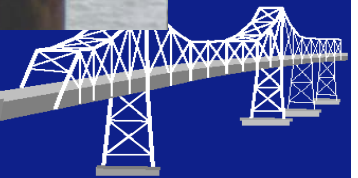




Supports under west end of Skyway



SFOBB East Span Seismic Safety Project

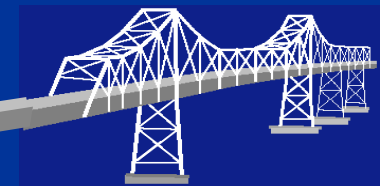




Shims and jacks under West end of Skyway



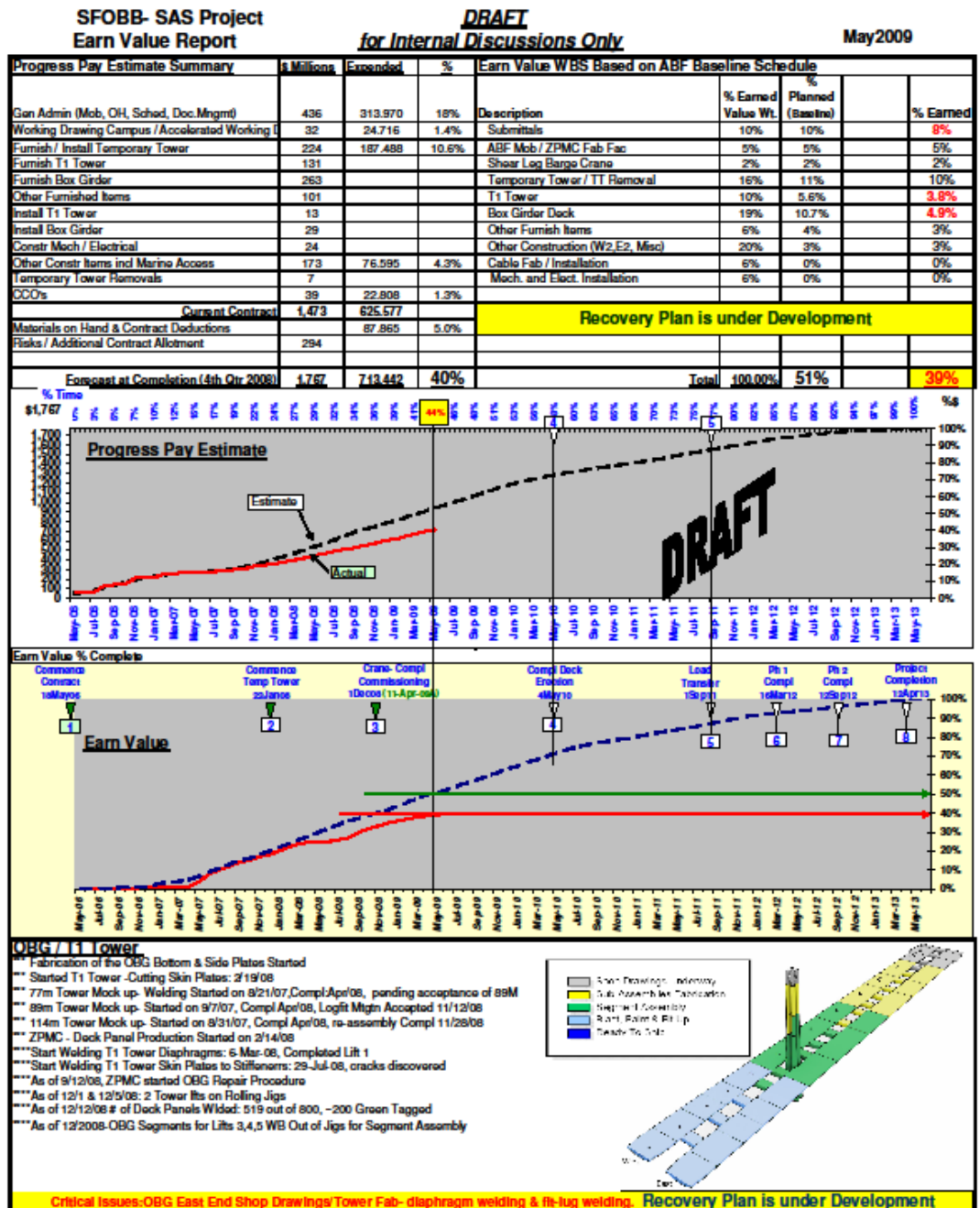
SFOBB East Span Seismic Safety Project





Estimate of % Complete via “Earned Value”

SFOBB East Span Seismic Safe





OTD

SFOBB East Span Seismic Safety Project





Oakland Touchdown Phase 1 – OTD1 04-0120L4 – Project Status

Project
Status

as of

11 Aug 09



WB and EB Structures,
Looking West





Oakland Touchdown Phase 1 – OTD1

04-0120L4 – Monthly Project Status – 16Sep08



- Pile Driving is On-going
- Piles #4 → #9 are complete
- Piles #1 → #3 bottoms are complete

Photo Taken on:

16Sep08

Pier E20R

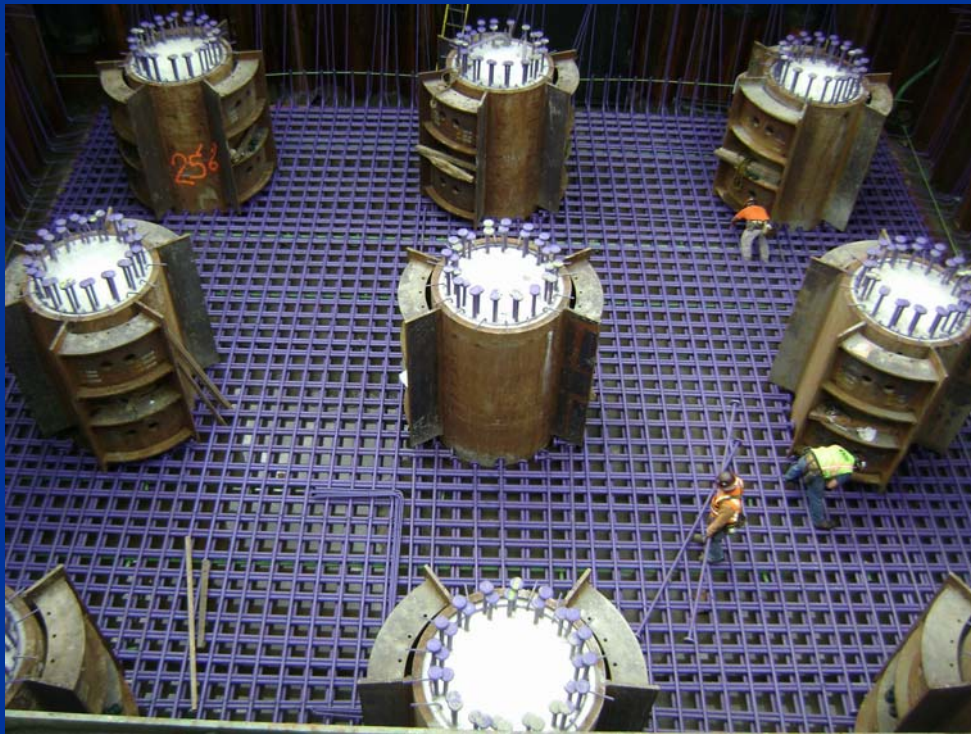
SFOBB East Span Seismic Safety Project





Oakland Touchdown Phase 1 – OTD1

04-0120L4 – Monthly Project Status – 16Sep08



- Footing Rebar is Pending

Photo Taken on:

16Sep08

Pier E18R

SFOBB East Span Seismic Safety Project





Oakland Touchdown Phase 1 – OTD1

04-0120L4 – Monthly Project Status – 16Sep08



- Column Pipe Key at E18L

Photo Taken on:
16Sep08

E18L





Oakland Touchdown Phase 1 – OTD1

04-0120L4 – Monthly Project Status – 16Sep08



- WB Frame 1
Falsework and Soffit
Forms (Facing East)

Photo Taken on:

16Sep08

WB Frame 1

SFOBB East Span Seismic Safety Project





Oakland Touchdown Phase 1 – OTD1

04-0120L4 – Monthly Project Status – 11 Aug 09



- Looking east at Eastbound Structure

Photo Taken on:
11 Aug 09

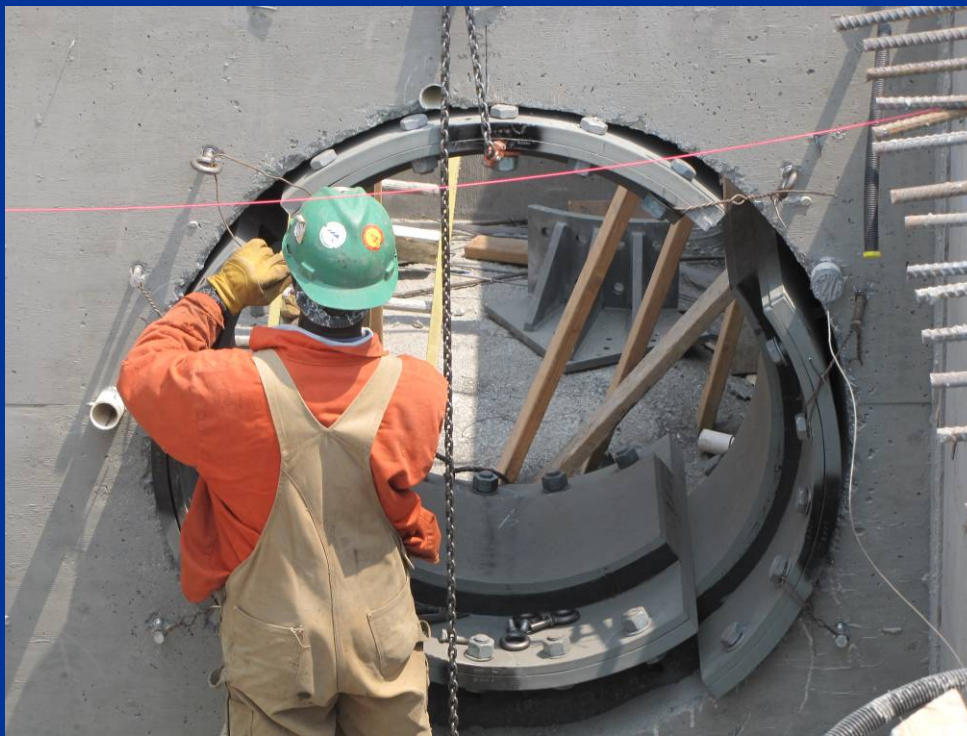
Eastbound OTD





Oakland Touchdown Phase 1 – OTD1

04-0120L4 – Monthly Project Status – 11 Aug 09



- Installing Circular Segmented Bearings at Hinge EE

Photo Taken on:

11 Aug 09

Hinge EE, Diaphragm C





Oakland Touchdown Phase 1 – OTD1

04-0120L4 – Monthly Project Status – 11 Aug 09



- Piers 20R, 21R, and 22R

Photo Taken on:
11 Aug 09

Piers 20R, 21R, and 22R





Environmental Studies Results

- Waters of the U.S.
- Species of Special Concern
- Air Quality
- Noise
- Water Quality



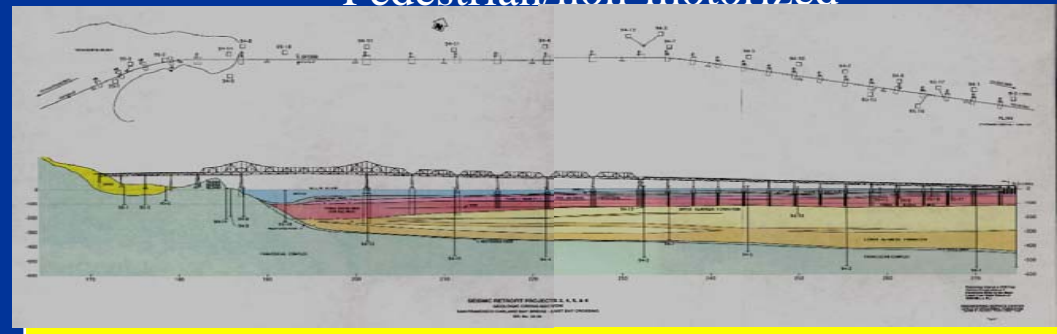
Double Crested Cormorant



Nimitz House on Yerba Buena Island

- Archaeology
- Historic Resources
- Land Use
- Community Impacts
- Pedestrian/non-motorized

- Visual
- Energy
- Geology
- Traffic and Circulation
- Hazardous Materials

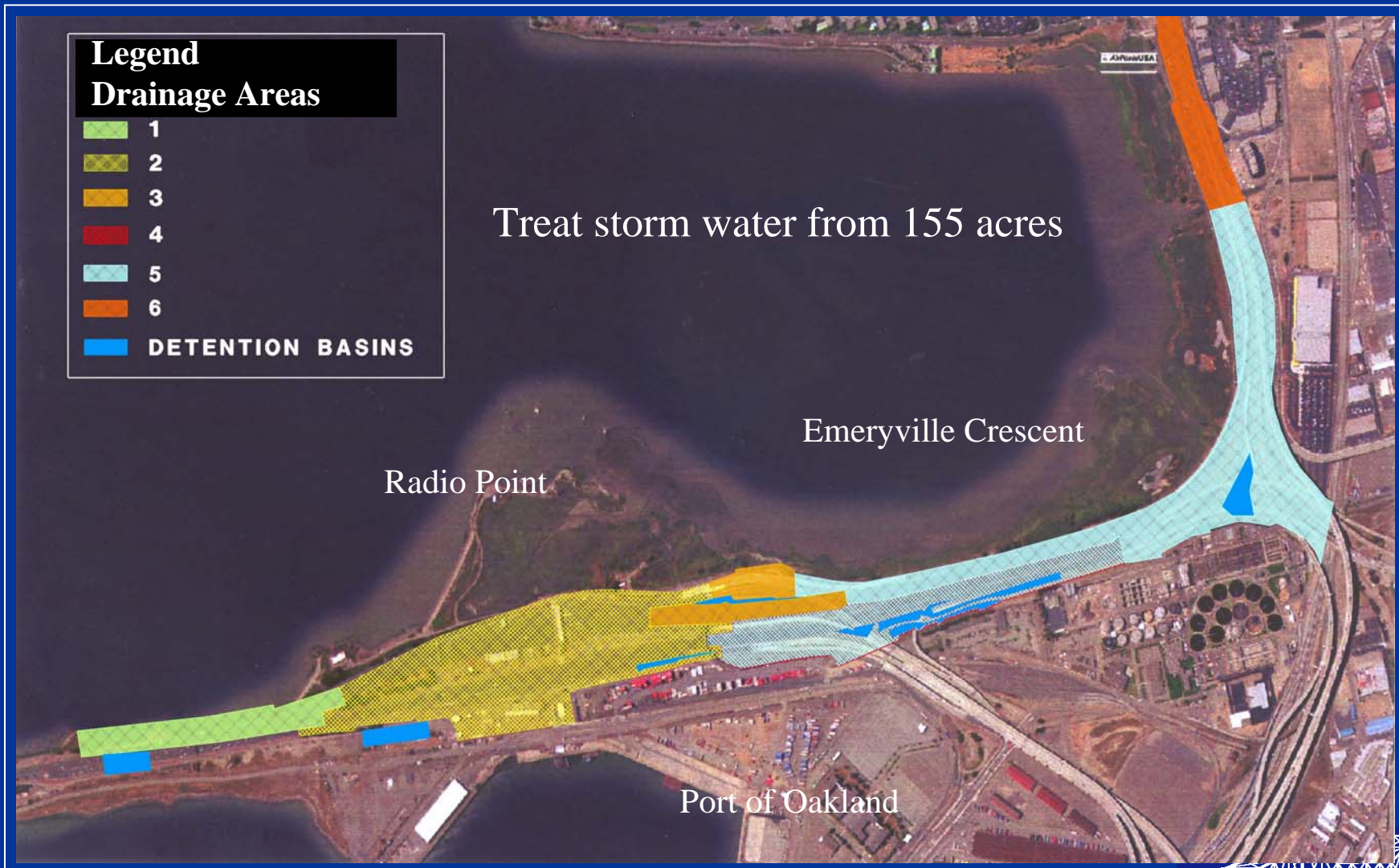


Geologic Cross Section



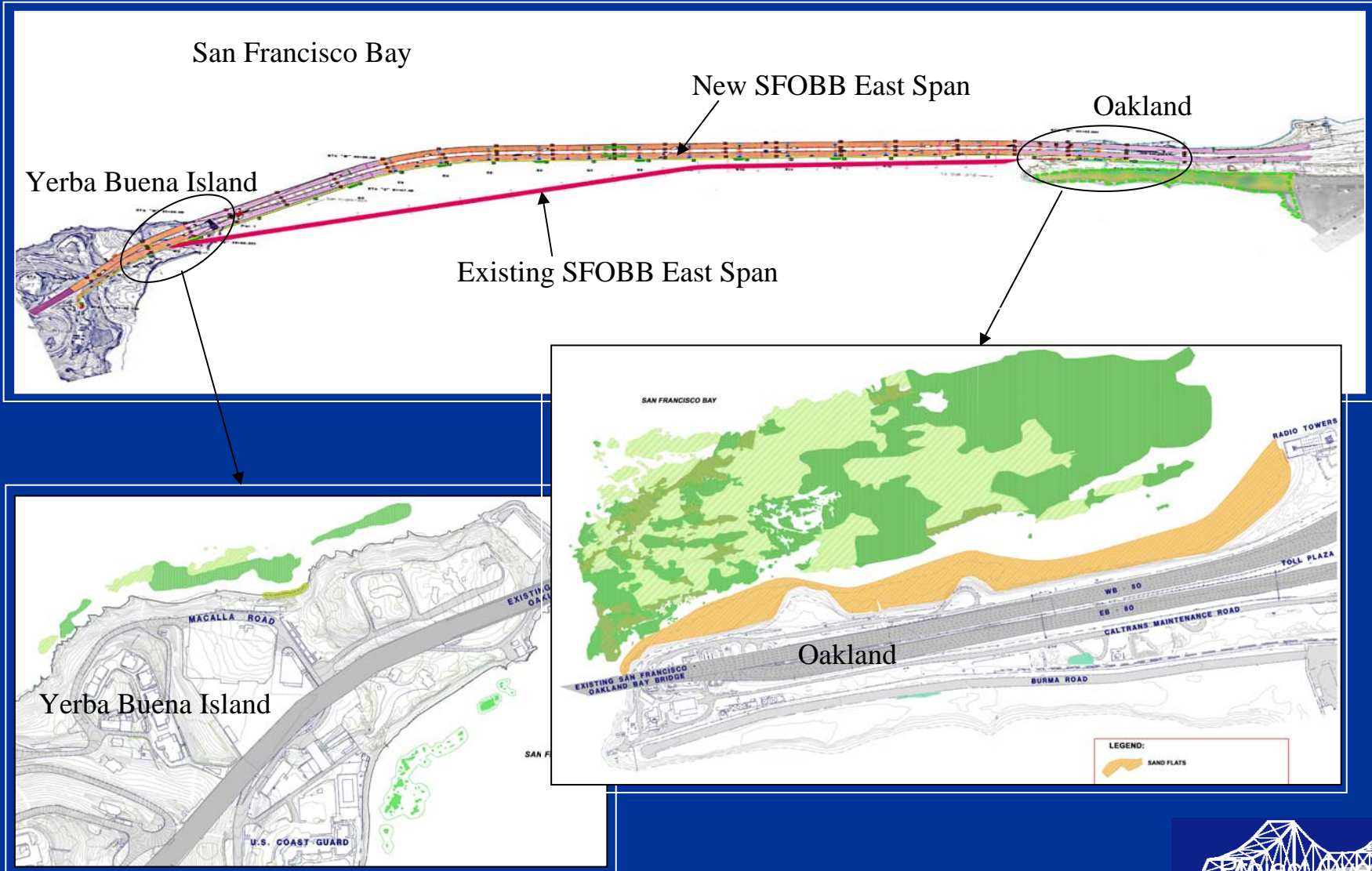


Storm Water Treatment BMPs





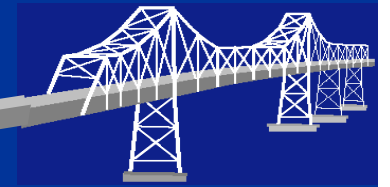
Special Aquatic Sites





YBI-SSD & Trans

SFOBB East Span Seismic Safety Project





The Deed is Done !



SFOBB East Span Seismic Safety Project





SFOBB East Span Seismic Safety Project





YBI TRUSSES



SFOBB East Span Seismic Safety Project





Cut Shoes for Visual Indicators



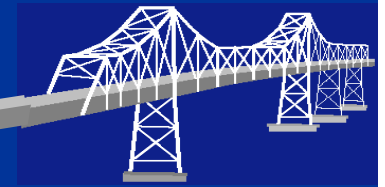
SFOBB East Span Seismic Safety Project



Shim-Ready back at YB3



SFOBB East Span Seismic Safety Project





Larger cuts to allow for additional change in length of bottom truss chord



SFOBB East Span Seismic Safety Project





First Very Large Seismic Deck Joints in Place

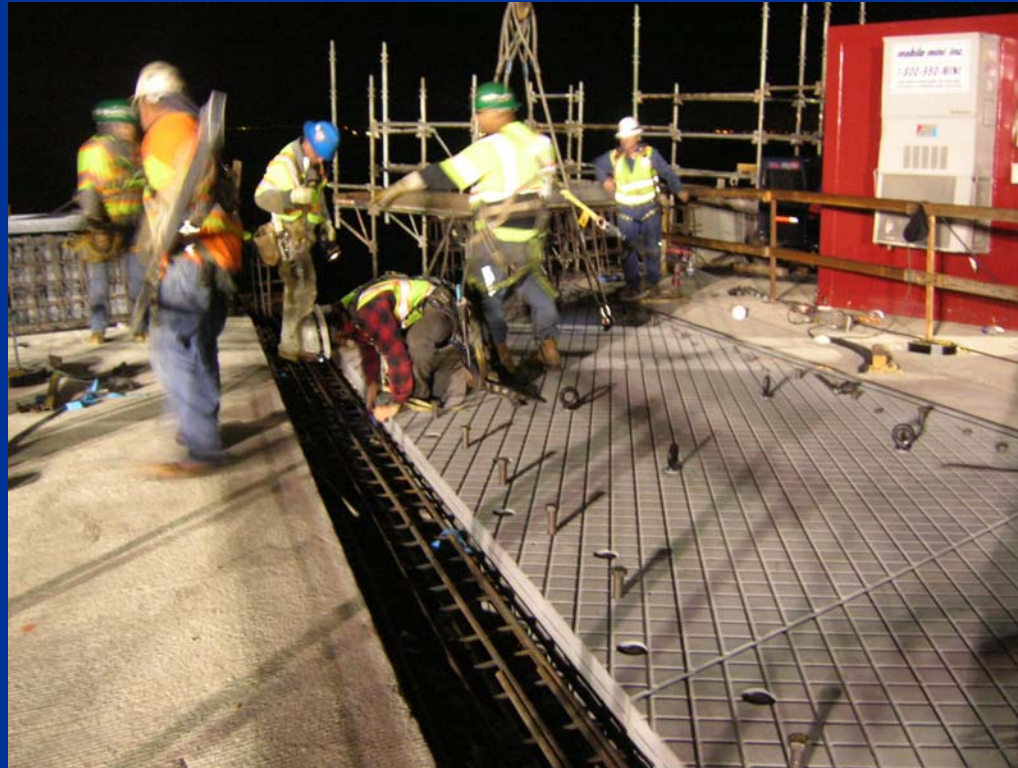


SFOBB East Span Seismic Safety Project





Field Crew did a great job



SFOBB East Span Seismic Safety Project





Planning at shop helped



SFOBB East Span Seismic Safety Project





Fit-up in shop



SFOBB East Span Seismic Safety Project





After fit-up in shop, take it to the field



SFOBB East Span Seismic Safety Project



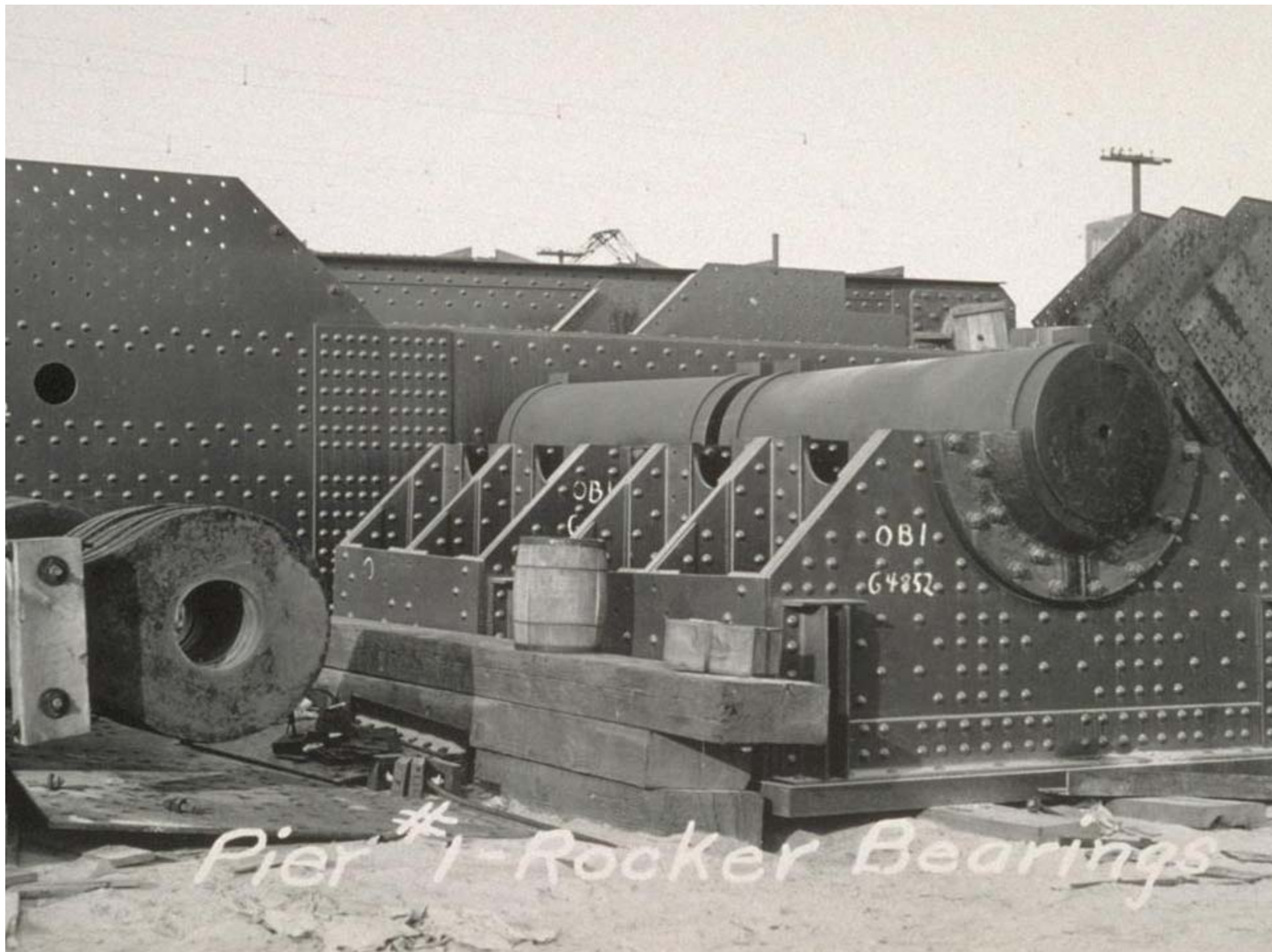


Strengthen at pick-up points



SFOBB East Span Seismic Safety Project





Pier #1 - Rocker Bearings



Start early digging issues out



SFOBB East Span Seismic Safety Project





John Nelson of Mammoet

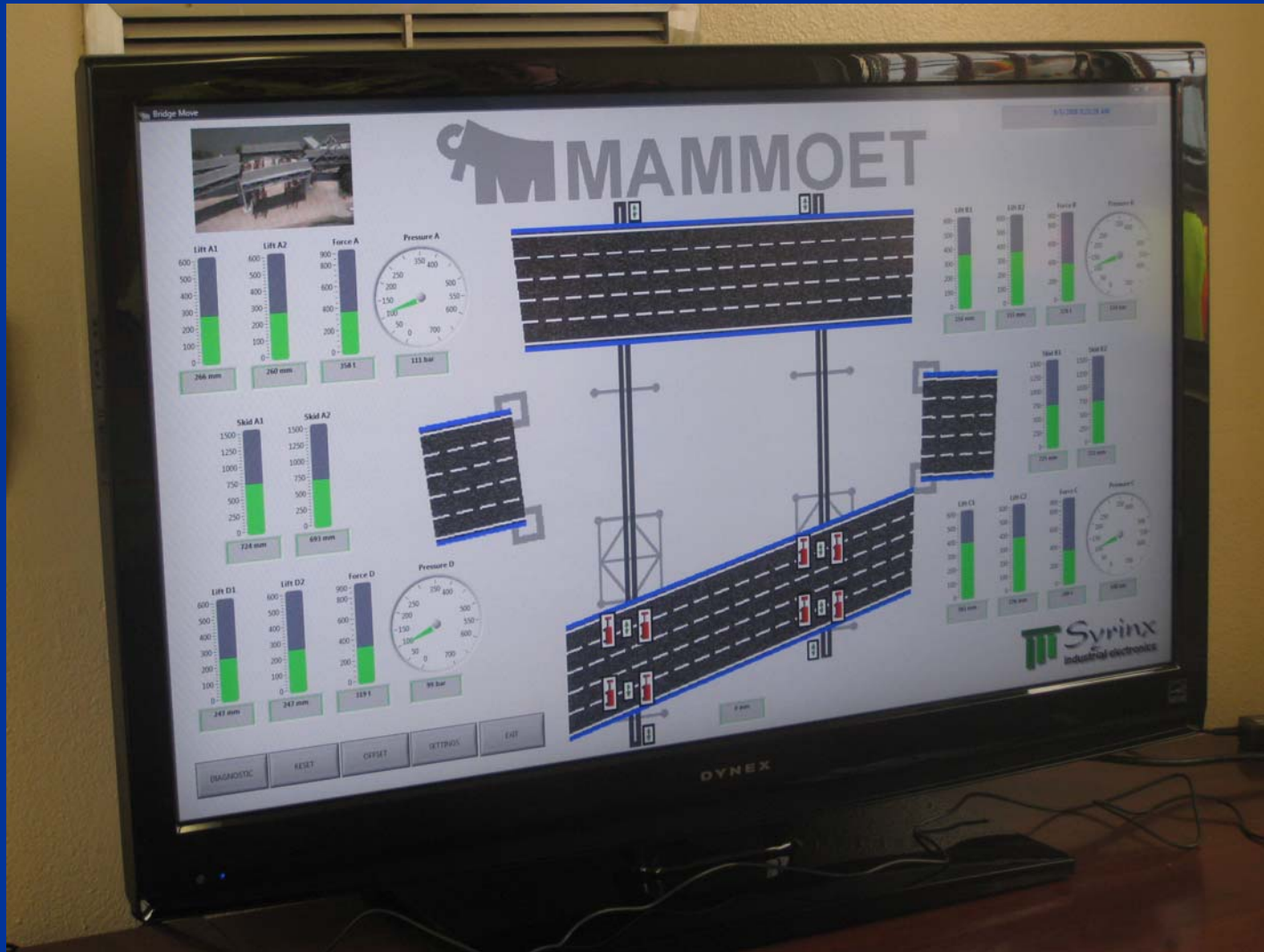


SFOBB East Span Seismic Safety Project





Diagnostics



SFOBB East Span Seismic Safety Project





Eye-bar work



SFOBB East Span Seismic Safety Project





Cantilever is long and was protected



SFOBB East Span Seismic Safety Project





YBI Transition – Bid open Dec 15, 2009

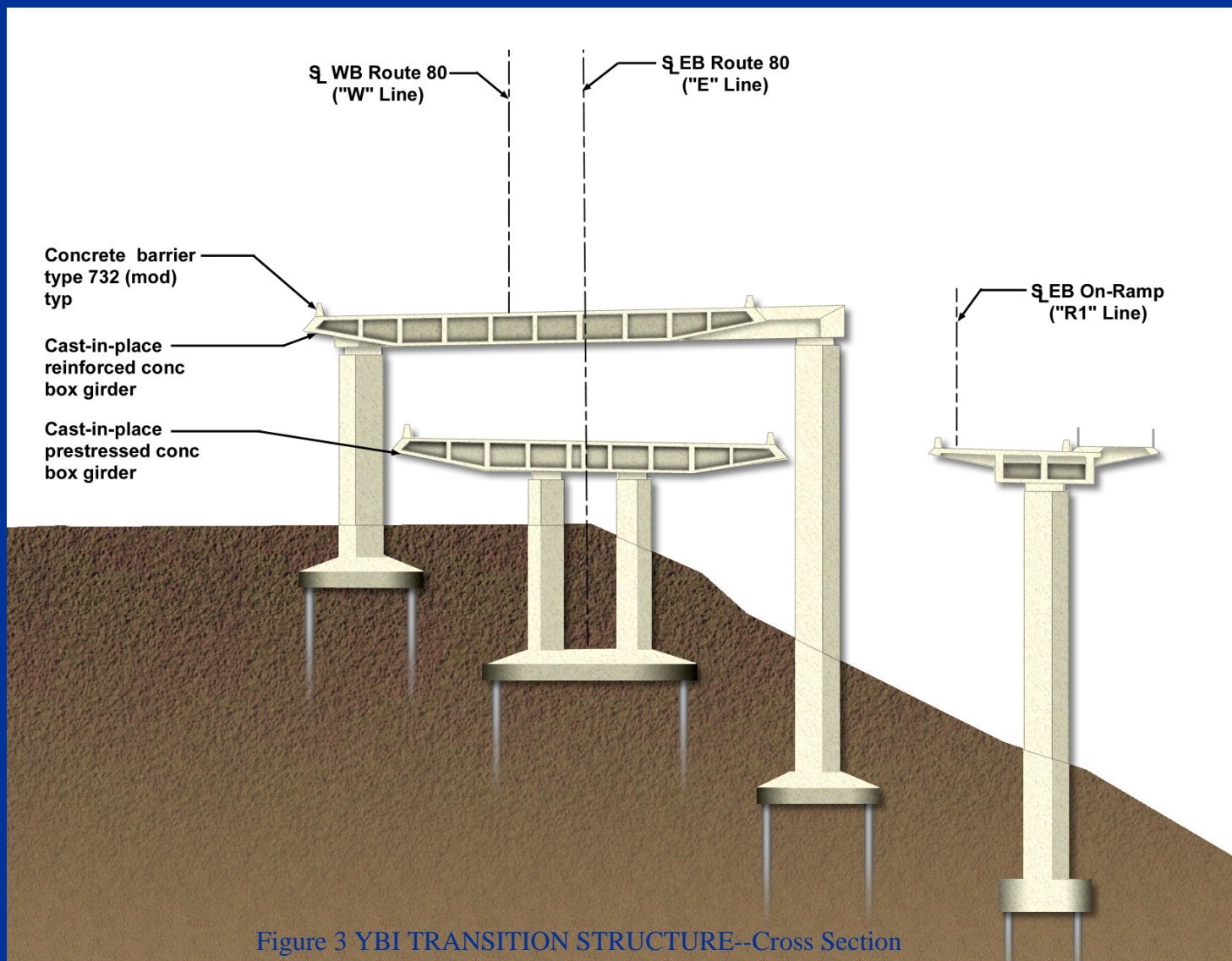


Figure 3 YBI TRANSITION STRUCTURE--Cross Section



