



Monroe Street Bridge Rehabilitation project



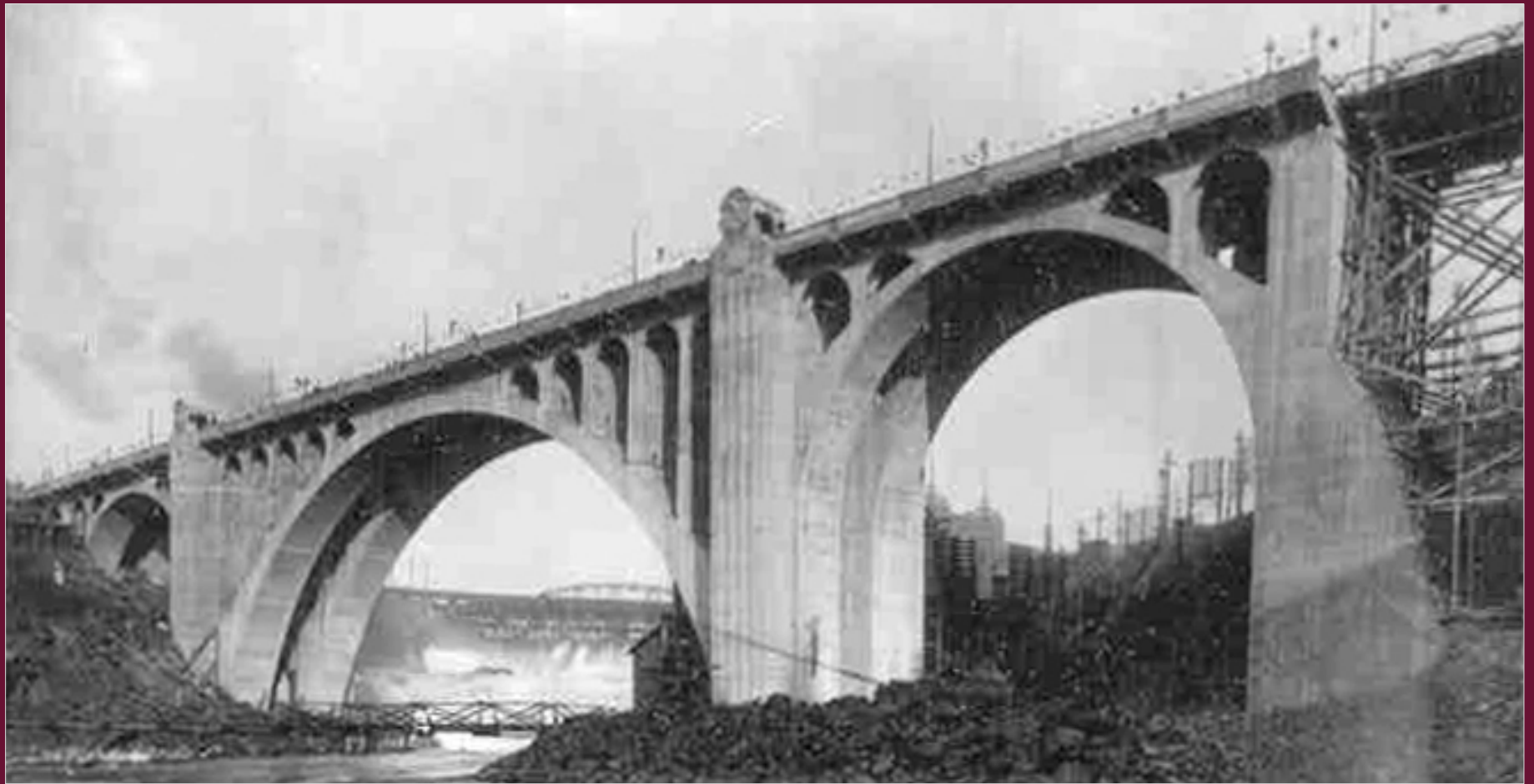






*Large Main
ing West Arch Ring
7-11*







T. V. TOLSON,
FEDERAL BUREAU OF INVESTIGATION
GROVER, WASH.



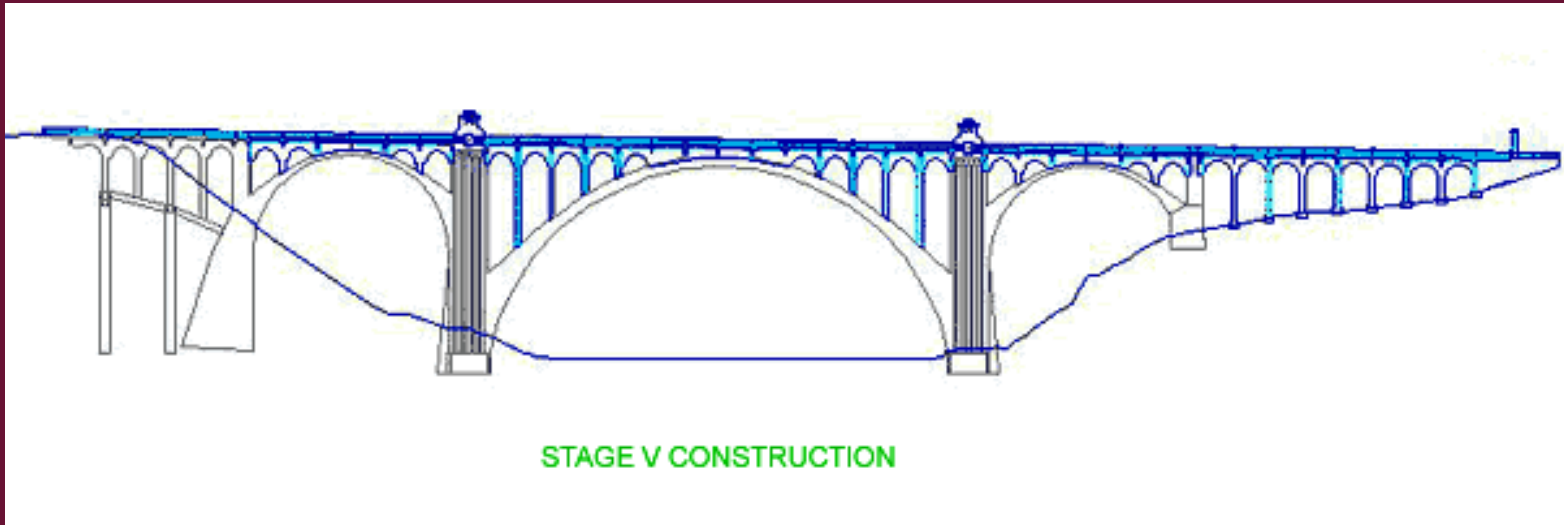
Photograph no. 25 - Looking at underside of floorbeam 14, Main Arch Span. Note: Concrete cover spalled exposing corroding steel member, rivet corrosion and loss of section.



Photograph no. 3 – Looking at the underside of the deck in span 5 of the North Approach Spans. Note: Spalling concrete, exposed corroding reinforcing steel, and loss of reinforcing.

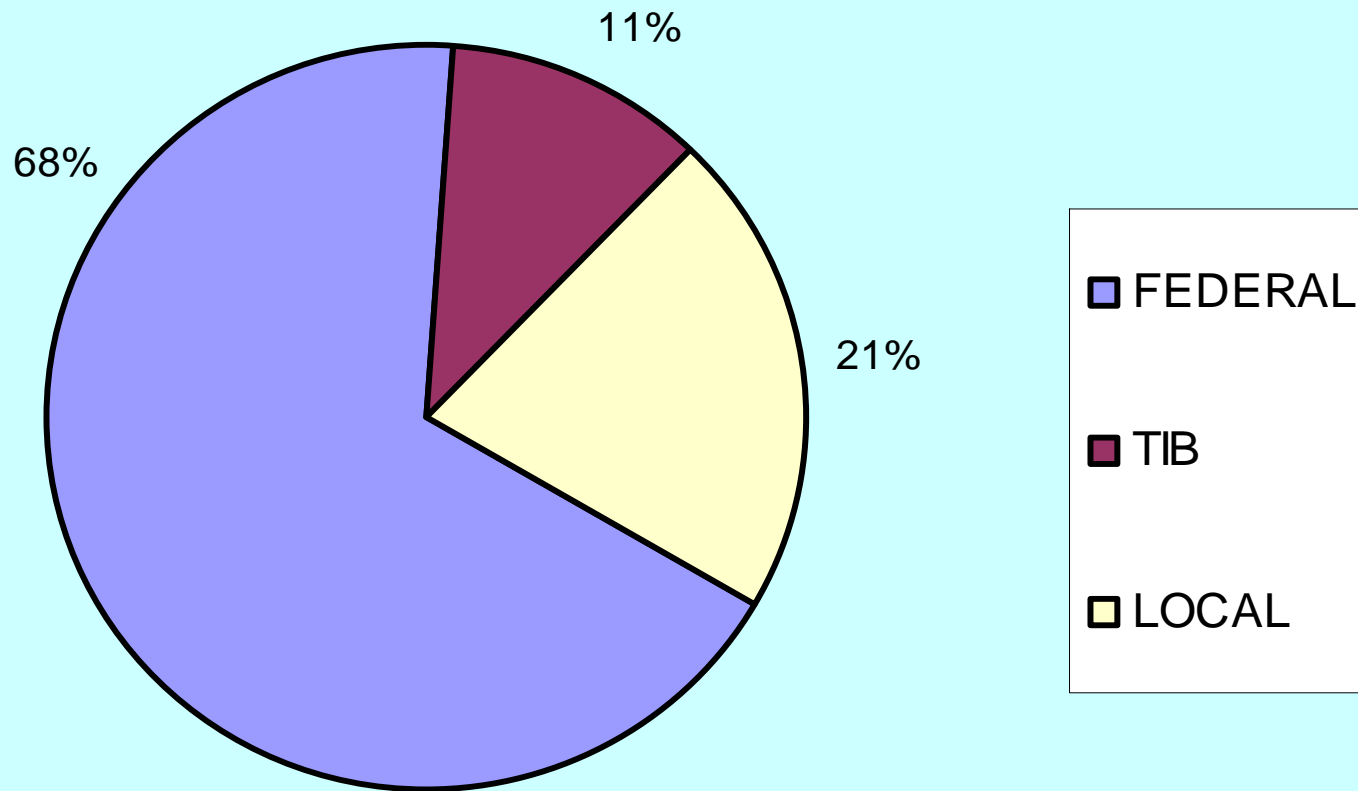


Photograph no. 60 - Looking south at pier 3 column for spandrel arch 2, North Approach Spans. Note: Severe crack width and offset.






MONROE STREET BRIDGE FUNDING



Permitting Coordination

- 
- City of Spokane - Shorelines Management
 - City of Spokane - Parks Dept.
 - City of Spokane - Historical Preservation Office
 - Washington State Department of Transportation
 - Federal Highway Administration
 - Spokane City-County Landmarks Commission
 - Washington State Historical Preservation Office
 - National Park Service - Cultural Resources Division
 - Spokane Tribe
 - Washington State Dept. of Fish and Wildlife
 - National Marine Fisheries Service
 - Washington State Department of Natural Resources
 - Spokane County Air Pollution Control Authority
 - Washington State DOE - Shorelines Management
 - Washington State Dept. of Ecology - Water Quality
 - U.S. Corps of Engineers



































Setting wood grade strip on Steel Form Dec./04





Moving Spandrel arch forms ahead from 1,2&3 to 3,&4. Notice headed pour on right.













































