



What We Heard: Community Conversations



The input from the Equity Advisory Committee and co-creation workshops provided insight about issues and opportunities to improve transportation within the SR 167 study area. **Table 1** includes a sampling of some of the direct feedback received from the public. Full details are in the Master Plan PEL Final Study.

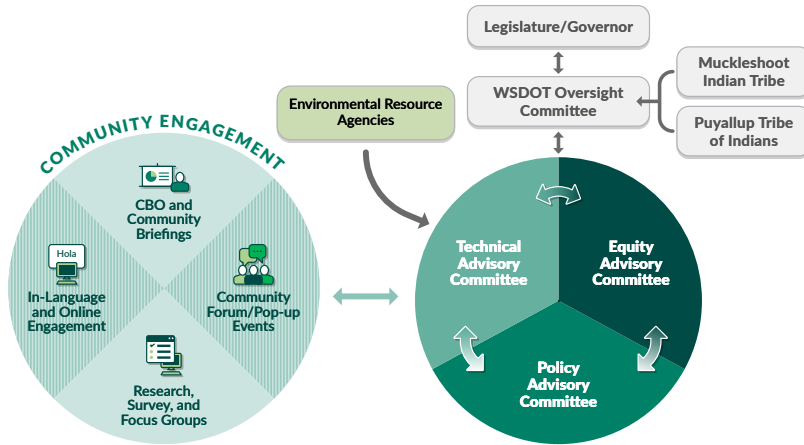


Figure 2. Committee and Engagement Structure



Figure 3. Engagement Statistics

Table 1.
Equity Feedback on SR 167 Transportation Issues

Topic	Specific Public Feedback
 Transit	<ul style="list-style-type: none"> ▶ Nighttime transit service is needed. Buses are not present in industrial areas during night times for swing shift workers (10 p.m. to 6 a.m.). ▶ There is bad congestion in Auburn and transit is needed, especially to serve senior communities. ▶ Need transit to essential facilities (health care, parks, retail, etc.). ▶ Need transit service in Renton to the Highlands and other residential areas.
 Sidewalks and Trails	<ul style="list-style-type: none"> ▶ Need separation between cars and people due to fast vehicles; people try to walk on the primary route to Muckleshoot Casino – sidewalks are critical here and in other areas of the corridor. ▶ Need more connections for people to use the new light rail station in Tacoma. ▶ Need trails that can get people to schools.
 Safety and Design	<ul style="list-style-type: none"> ▶ Need to add lighting with pedestrian/trail projects. ▶ Bicycle theft is a deterrent from making bike-transit trips prompting need for better lighting and visibility.
 Traffic Congestion	<ul style="list-style-type: none"> ▶ High traffic/truck traffic present; there is bad congestion at multiple interchanges. ▶ There is bad congestion at the I-405 interchange; people use the carpool lane to avoid the ramp area/interchange. ▶ SR 167 north to Kent does not have pull out areas for emergencies.
 Tolling on SR 167	<ul style="list-style-type: none"> ▶ Tolling in the lower income Auburn/Kent area should not be as expensive as in Bellevue. ▶ Tolling funds could be used for driving training programs for immigrant populations since some noted that it is difficult to understand how to use toll lanes.

Final Study Recommendations



The data-driven, partner-refined process utilized data analysis and feedback from the community and committees to identify a package of transportation projects and strategies that strongly align with the Master Plan vision. The Final Study Recommendations are multimodal and would be implemented by multiple agencies representing SR 167 study area communities. Key projects and strategies developed from community, partner, and equity feedback include:

- ▶ A new express toll lane in each direction of SR 167 creating a dual express toll lane system.
- ▶ New auxiliary lanes on SR 167 and SR 18.
- ▶ Eight interchange improvements to remove bottlenecks and better accommodate all modes.
- ▶ Planned transit services envisioned in our transit agency partners' long-range plans, including 20 new or enhanced transit routes, more night/weekend service, and new on-demand transit services with a focus on equity priority areas and employment areas that are not served by fixed-route transit.
- ▶ A new bus rapid transit service that complements increased Sounder commuter rail service and leverages the express toll lane system.

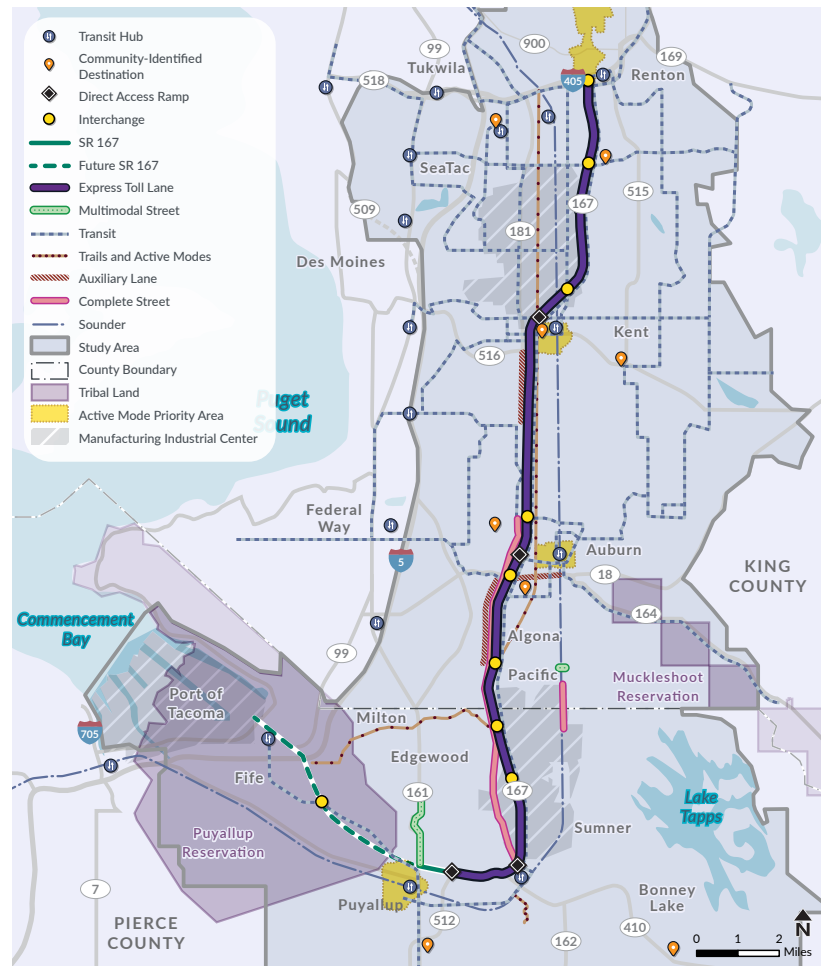


Figure 4. Final Study Recommendations

- ▶ Sidewalk, bicycle lane, and trail investments that close gaps in the system with an emphasis on facilities that connect to equity-partner-identified destinations and improve safety.
- ▶ Work with the Washington State Transportation Commission to establish a state-wide low-income toll program.



