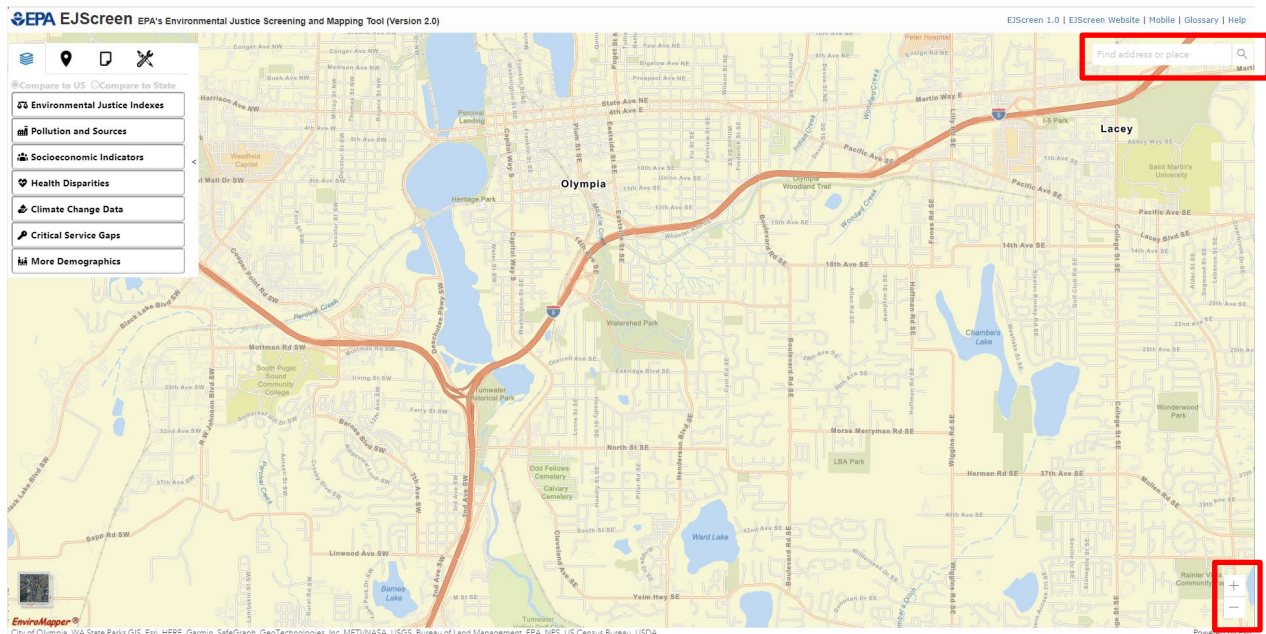


# How to Use EJScreen

## Updated November 2022 (contact information only)

The Environmental Protection Agency (EPA) created and maintains the EJScreen mapping and screening tool. The EPA released EJ Screen Version 2.0 in February 2022. Use the following guidance to determine the presence of environmental justice populations within your project area.

1. Open EJScreen.
2. Navigate to the project area by using your mouse and the Zoom In/Out (+/-) buttons in bottom right corner. Or type in the city and state in the search box in the upper right corner and hit enter.



3. Click on the “Reports” tab to view the available selection tools.
4. Use the ‘Add a Path’ tool to draw a line down the center line of your project. Click once to change the path of the line. Be careful to start and stop the line as accurately as possible. Remember, you can Zoom In/Out using the + and - buttons. You can also change the base map to an aerial photo or a street map with road names by clicking on the ‘Toggle basemap’ icon in the bottom left corner of the screen.

Note – you can use the ‘Draw an Area’ tool instead, if appropriate.

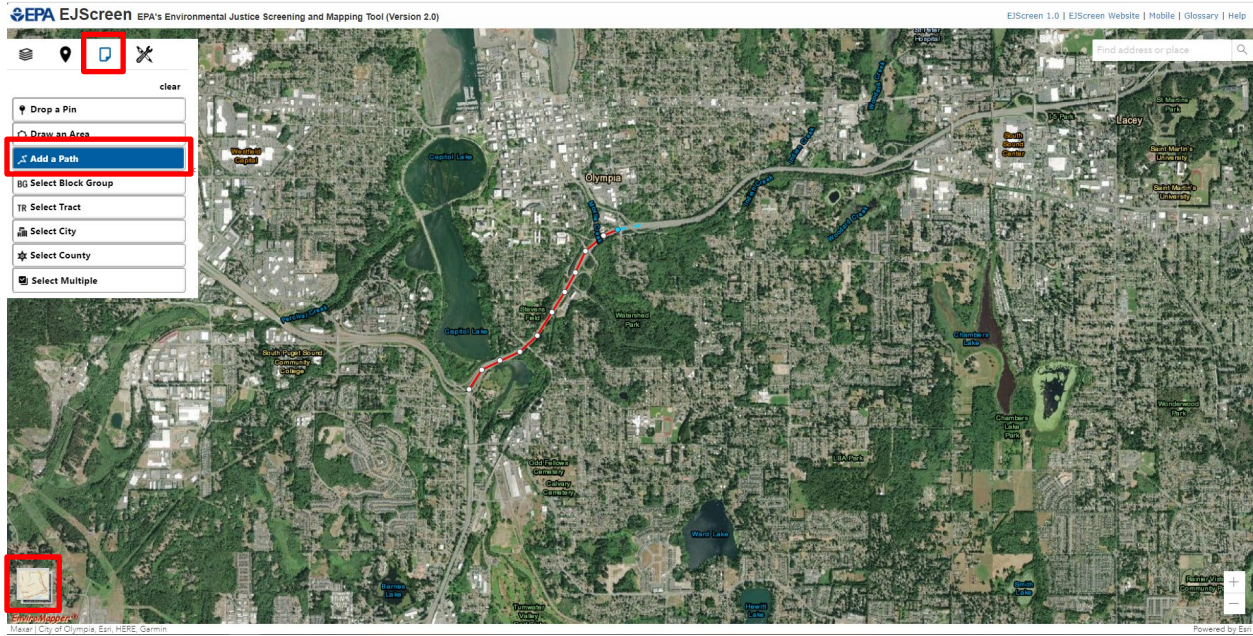
Contact:

WSDOT NEPA/SEPA Program

[NEPA-SEPA@wsdot.wa.gov](mailto:NEPA-SEPA@wsdot.wa.gov)

Last Updated: November 2022 (contact only)

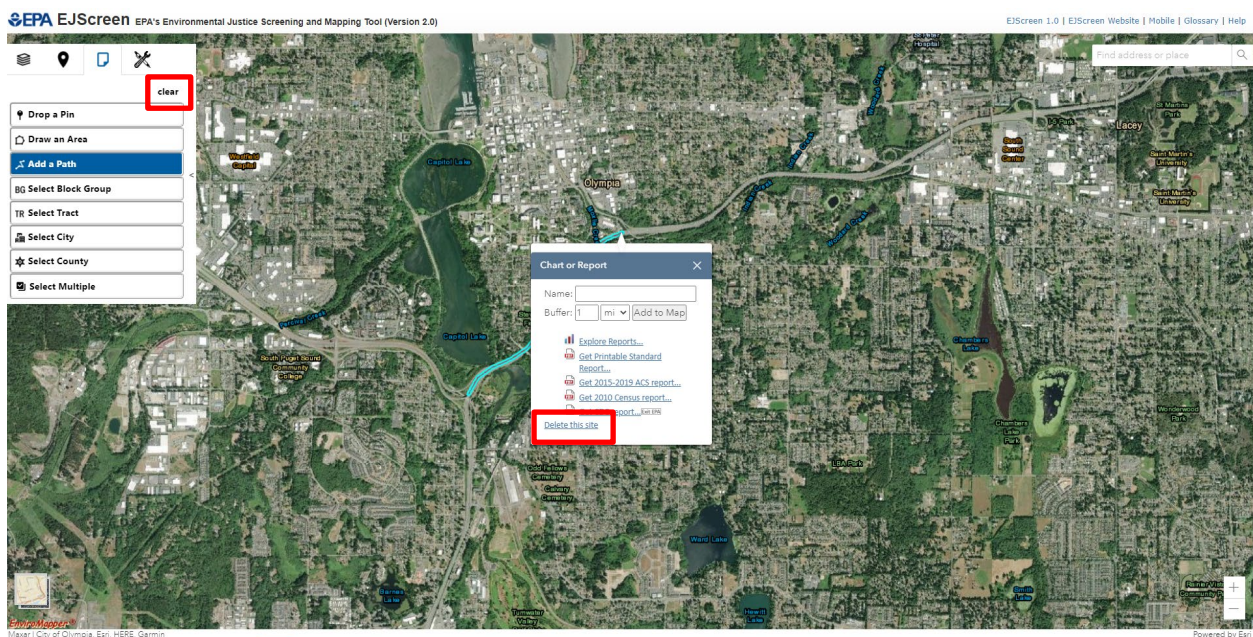




5. Double click to complete drawing the line. The application will automatically offer to generate reports. Verify the line path before generating the reports by:

1. Closing the 'Chart or Report' drop down menu.
2. Zooming in to see better detail if needed.
3. Visually confirming end points.

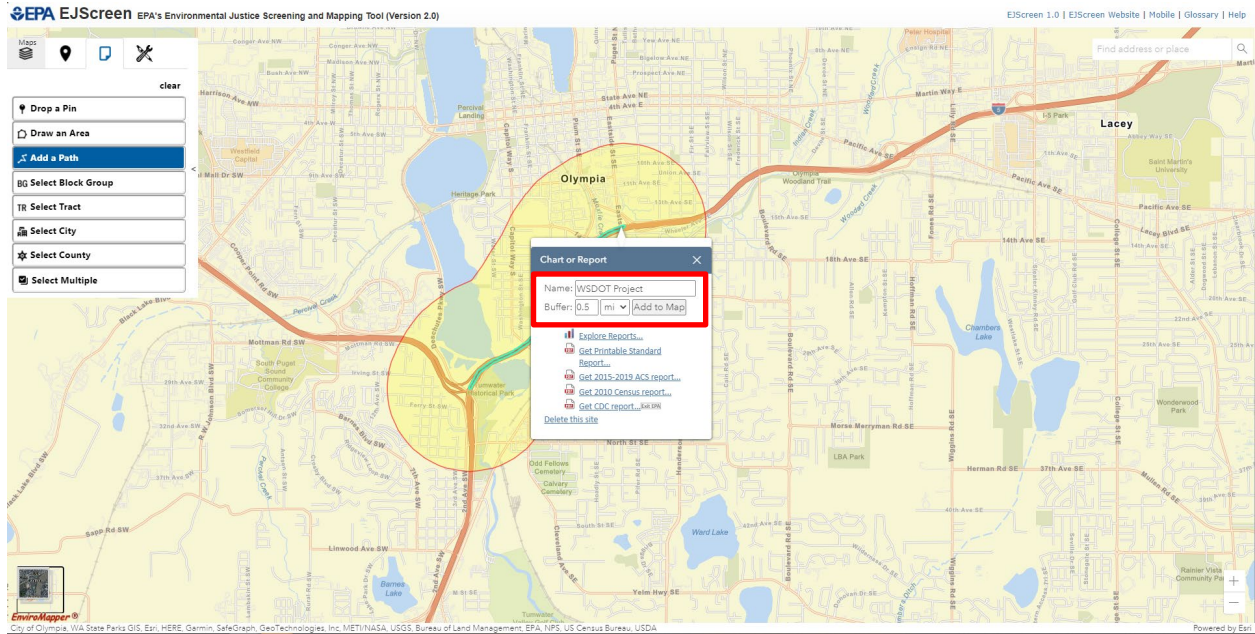
If you need to re-draw the line, then click the line and select 'Delete this site' or click 'clear' in the upper left menu. Note – You cannot modify an existing line; you must draw a new line.



Contact:  
 WSDOT NEPA/SEPA Program  
[NEPA-SEPA@wsdot.wa.gov](mailto:NEPA-SEPA@wsdot.wa.gov)  
 Last Updated: November 2022 (contact only)

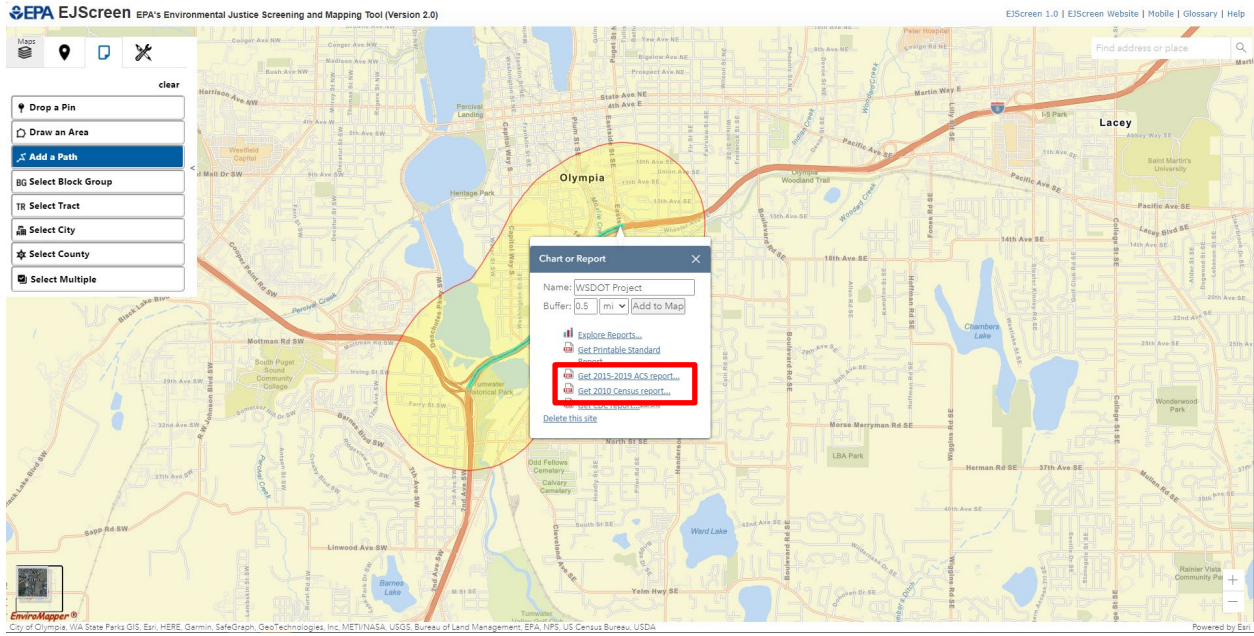


6. Once you're satisfied with the line, click the line to open the 'Chart or Report' menu. Type your project name into the text box to label your reports. Change the buffer to **0.5 miles** (the application default is 1.0 miles). Click 'Add to Map' to see the area selected for analysis (highlighted). Double-check that the area selected is a logical representation of the affected area. Note – You do not need to save the map itself for your EJ report.

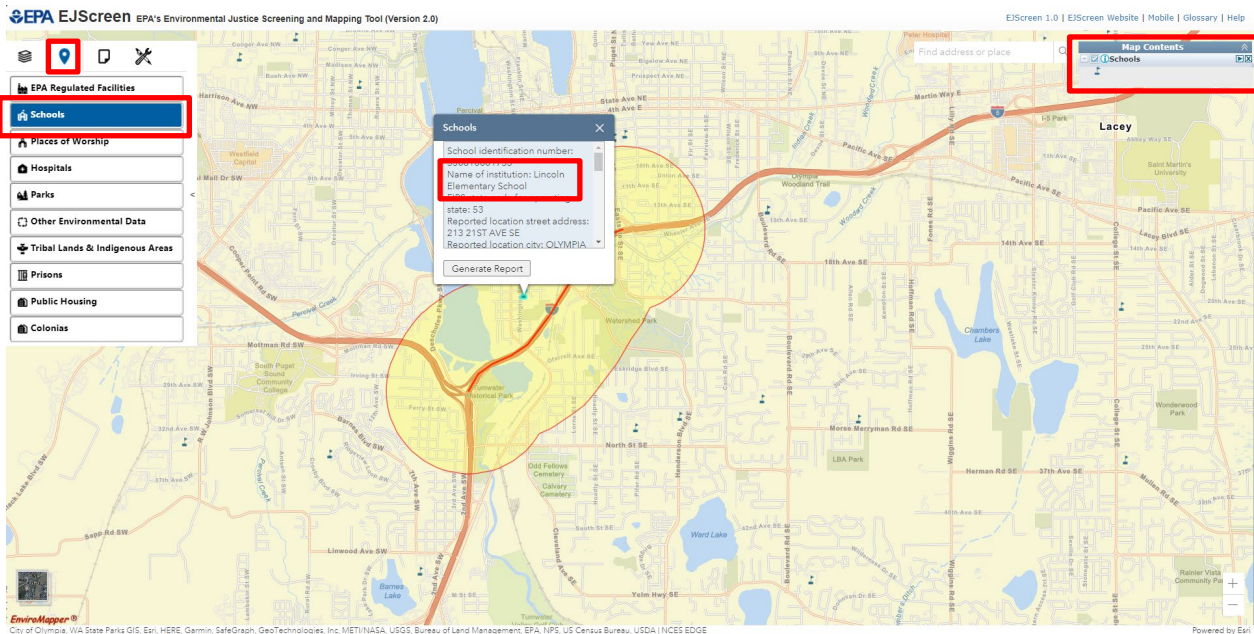


7. In the menu, click the following:
- 'Get 2015-2019 ACS report...'
  - 'Get 2010 Census report...'

Print these reports or save them. You will use select info from each report for your demographic analysis (instructions for collecting demographic data are on the Environmental justice & Title VI webpage). Include these reports in your project file.



8. Identify schools within or closest to your project area. Do this by closing the 'Chart or Report' menu and selecting 'Schools' under the "Places" menu in the top left corner. Wait a moment for the database to retrieve information. A legend named "Map Contents" will appear with a 'Schools' icon in the top right corner. Click each school icon within and near the project area to view school information. Note the 'Name of Institution'.



Contact:  
 WSDOT NEPA/SEPA Program  
[NEPA-SEPA@wsdot.wa.gov](mailto:NEPA-SEPA@wsdot.wa.gov)  
 Last Updated: November 2022 (contact only)

9. Go to the Washington Office of Superintendent of Public Instruction (OSPI) website to get school demographic data. Directions for navigating the OSPI site are provided on the Environmental justice & Title VI webpage.

Contact:

WSDOT NEPA/SEPA Program

[NEPA-SEPA@wsdot.wa.gov](mailto:NEPA-SEPA@wsdot.wa.gov)

Last Updated: November 2022 (contact only)