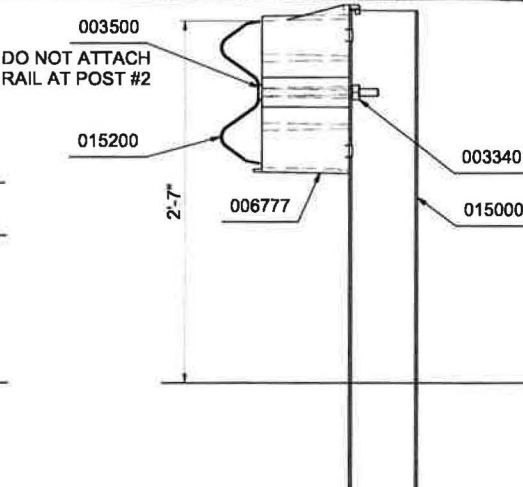
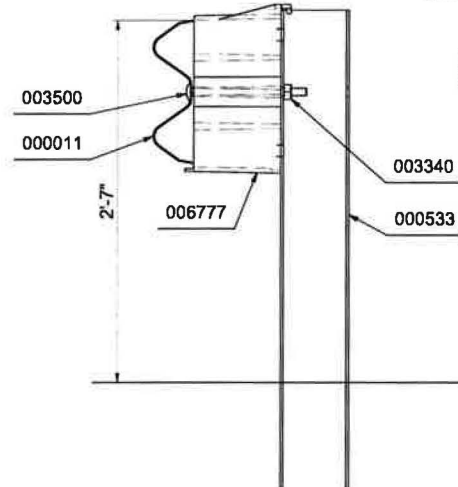
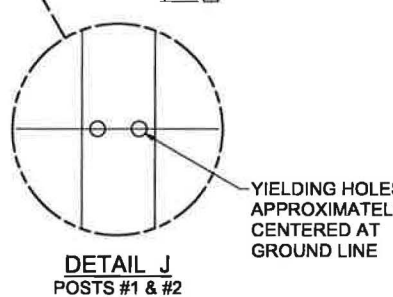
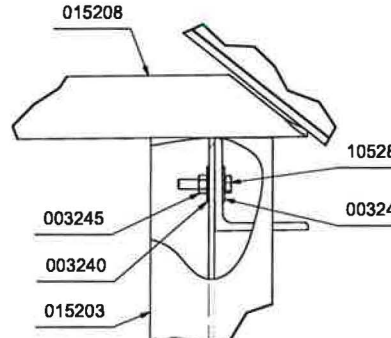
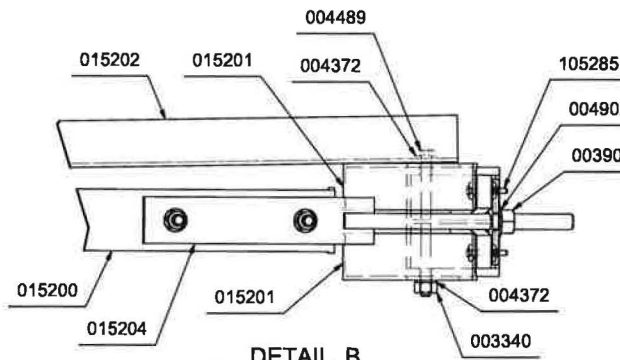
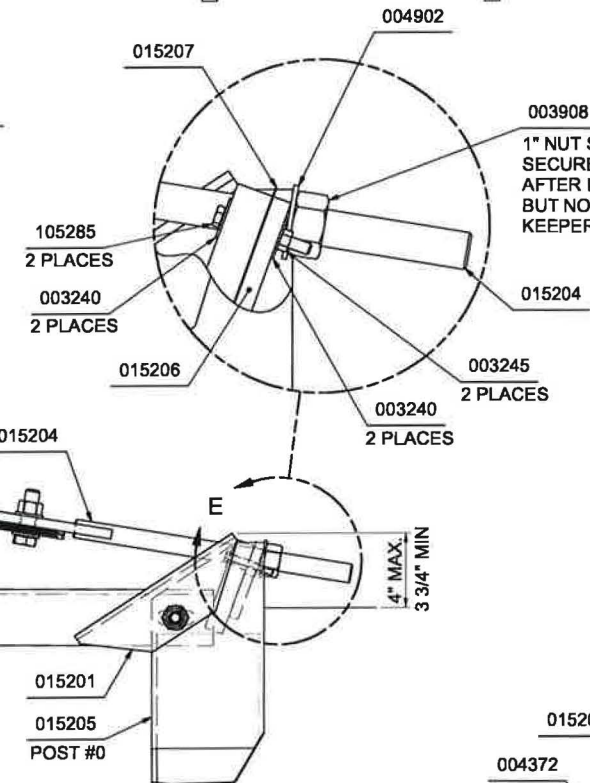
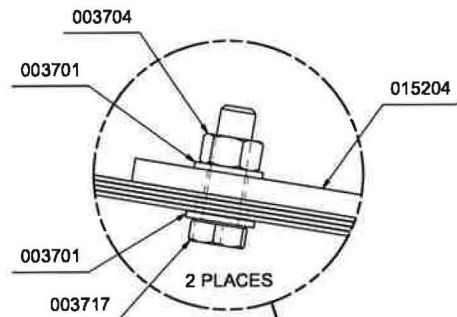
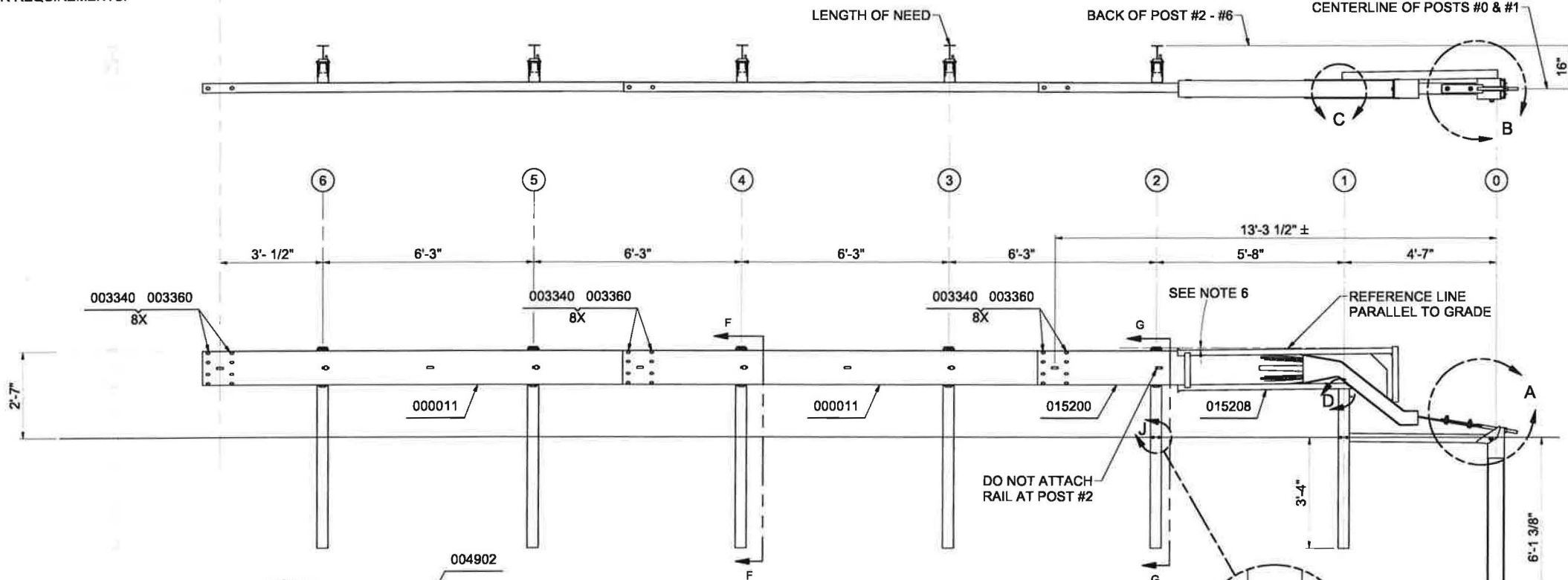


NOTE:
 INSTALL SoftStop® PARALLEL TO ROADWAY.
 WHEN OFFSET IS REQUIRED BY DESIGN ENGINEER,
 SEE SoftStop® MANUAL FOR REQUIREMENTS.

← MASH TEST LEVEL 2 (TL-2) LENGTH OF SoftStop® TERMINAL (38'-3 1/2")



- NOTES:
- REFER TO SoftStop® ASSEMBLY MANUAL.
 - PROPER SITE GRADING SHOULD BE ACCOMPLISHED IN ACCORDANCE WITH LOCAL SPECIFYING AGENCY GUIDELINES AND THE AASHTO ROADSIDE DESIGN GUIDE.
 - DO NOT ATTACH THE SoftStop® DIRECTLY TO A RIGID BARRIER.
 - UNDER NO CIRCUMSTANCES SHALL THE GUARDRAIL WITHIN THE SoftStop® BE CURVED.
 - MANUFACTURER SUGGESTS CUSTOMER TO PROVIDE REFLECTORIZATION OF THE TERMINAL.
 - IT IS ACCEPTABLE TO INSTALL THE SoftStop® IMPACT HEAD PARALLEL TO THE GRADE LINE OR WITH AN UPWARD TILT. SEE SoftStop® ASSEMBLY MANUAL FOR SPECIFIC DETAILS.

PARTS LIST		
PART NO.	QTY.	DESCRIPTION
000011	2	12/12'6/3"1.5/S
000533	4	6'0 POST - W6 x 8.5
006777	5	KING BLOCK 4" X 7 1/2" X 1'-2"
015000	1	6'0 SYT PST/8.5/31" GR HT
015200	1	SFST-ANCHOR G.RAIL 12'-6"
015201	2	SFST-ANCHOR ANGLE
015202	1	SFST-ANGLE STRUT
015203	1	SFST-POST#1 SYTP
015204	1	SFST-ANCHOR PADDLE
015205	1	SFST-POST#0
015206	1	SFST-PLATE WASHER
015207	1	SFST-KEEPER PLATE
015208	1	STSP IMPACT HEAD, W/ DECAL
- HARDWARE -		
003240	6	5/16 ROUND WASHER WIDE
003245	3	5/16 HEX NUT
003340	31	5/8" GR HEX NUT
003360	24	5/8"X1.25" GR BOLT
003391	1	5/8"X1.75" HEX BOLT A325
003500	5	5/8"X10" GR BOLT A307
003701	4	3/4" ROUND WASHER F436
003704	2	3/4" HVY HEX NUT A563 DH
003717	2	3/4"X2.5" HEX BOLT A325
003908	1	1" HVY HEX NUT A563 DH
004372	4	5/8" WASHER F436
004489	1	5/8"X9" HEX BOLT A325
004902	1	1" ROUND WASHER F436
105285	2	5/16"X2.5" HEX BOLT GRD 5
105286	1	5/16"X1.5" HEX BOLT GRD 5

WASHINGTON STATE DEPARTMENT OF TRANSPORTATION

Approved
 Approved with revision
 Rejected

BY: *Tim Mohl*
 DATE: 4/3/19

GENERAL: SEE PARTS LIST	DATE: 1/14/2013	TOLERANCES PER CEMC-THP-SF-001, UNLESS OTHERWISE SPECIFIED.	SofiStop® TERMINAL, (8" BLOCKS) PLAN, ELEVATION & SECTION MASH TEST LEVEL 2 (TL-2) P/N: 500653			
DESIGN: LH	DATE: 1/14/2013	DO NOT SCALE DRAWING				
CHECKED: BT	DATE: 1/14/2013	ECO	DATE	REV	BY	CHK
UNLESS OTHERWISE NOTED, ALL DIMENSIONS ARE IN FEET-INCHES. DIMENSIONS ACCORDING TO AWS D1.1M AND CEMC-THP-85-003 UNLESS OTHERWISE SPECIFIED.	Revision	4460	11/8/16	10	DPH	KWL
DEL: 004276, 004471, & 114532; ADD: 006777, 015204; CHG: NOTES, BORDER, BOLT DIA (DETAIL C), REDRAWN IN REV (REV: 8"X12" DIM @ END OF SYS; ADD: 3"X1 1/2" DIM @ END OF SYS.	4844	6/21/17	11	DDS	KWL	
EST UNFINISHED WT: 0.0 lbs	ADDED CALLOUTS FOR BOLTS & NUTS AT SPLICES	4844	6/21/17	11	DDS	KWL
DRAWING: SS 653		REV: 11	SHEET: 1 of 1		CEMC-THP-FE-052 Rev C, 1/22/2016	

© 2013, 2015, 2016, 2017 Trinity Highway Products, LLC. All rights reserved.