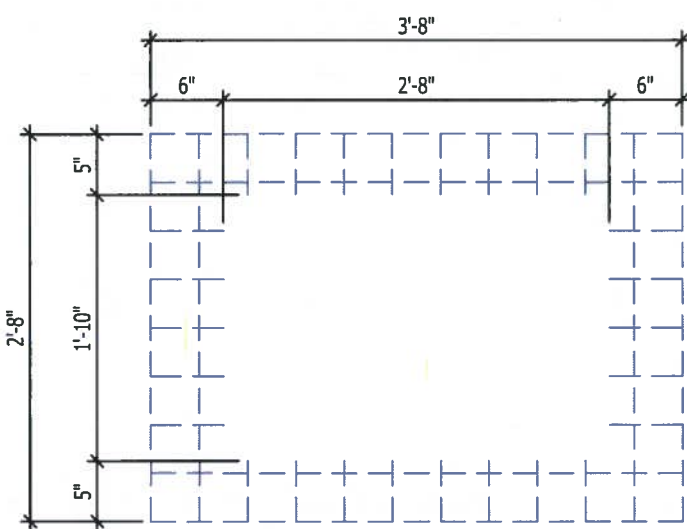
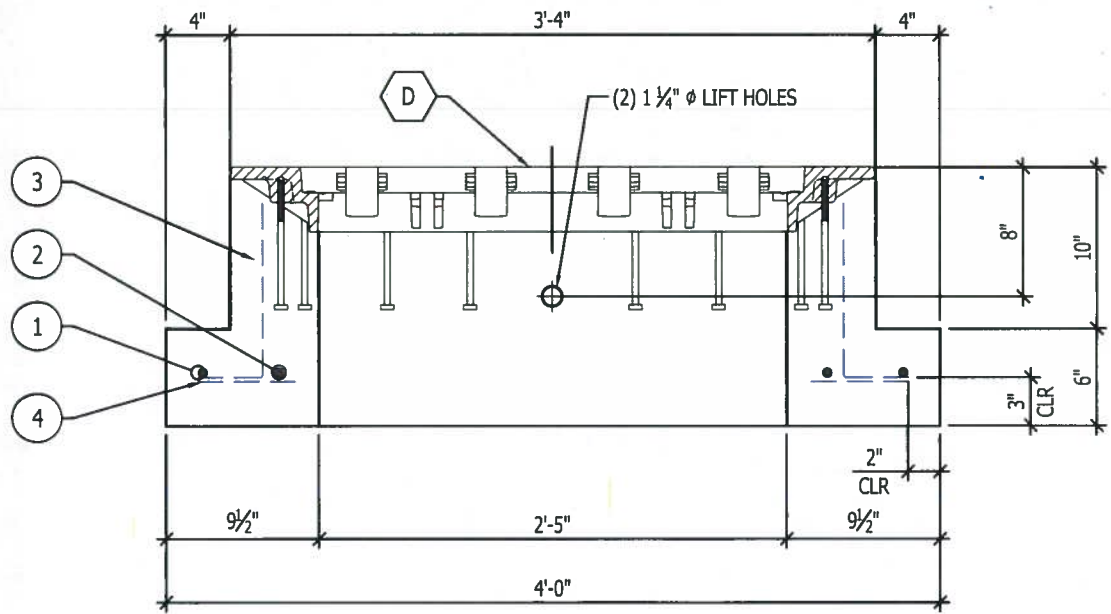
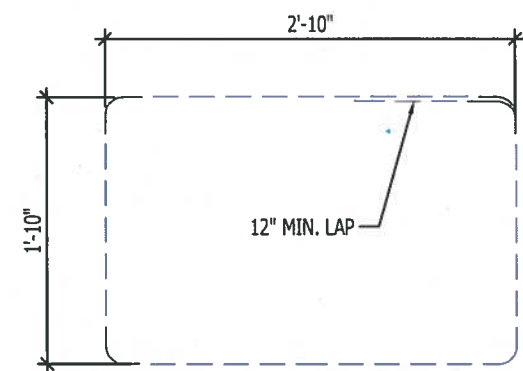
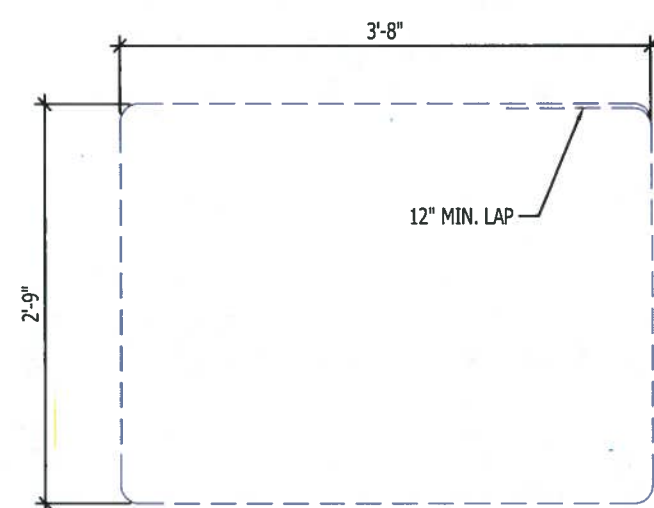
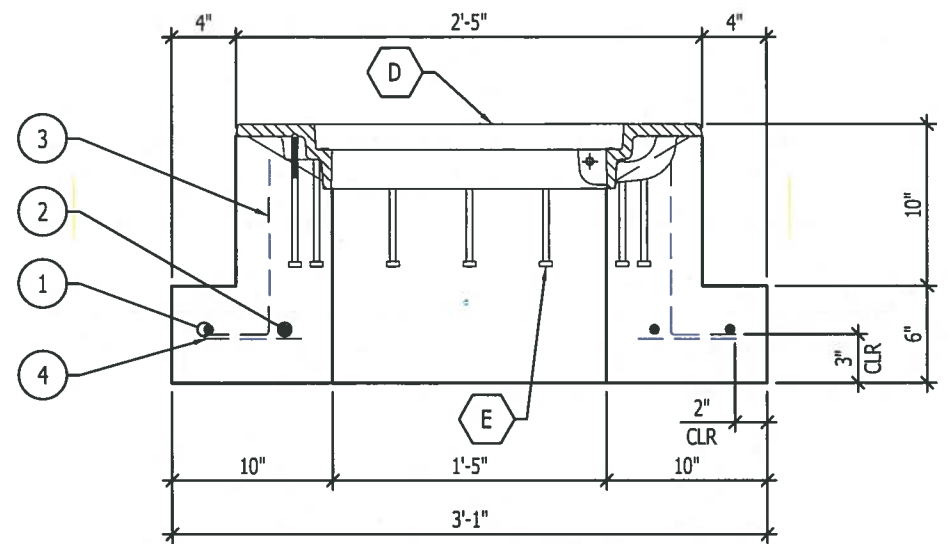


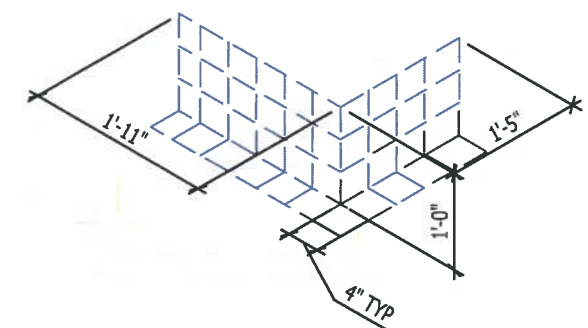
(8) 1/2"-13 x 1 1/4" PENTA HD. S.S. BOLT W/ 1/2" I.D. 1 1/4" O.D. S.S. WASHERS

ALUM. NAME PLATE WITH MACHINE SCREWS PROVIDED AND INSTALLED BY OTHERS



**APPROVED AS NOTED**

Washington State Department of Transportation  
HQ Traffic Operations Office  
BY: *[Signature]* DATE: 8/16/2019



4 Total - 2 are mirrored

- NOTES:
1. CONCRETE  $f_c=4,000$  PSI
  2. WWR: ASTM A1064  $f_y = 65,000$  PSI
  3. REINFORCING ASTM A706  $f_y = 60,000$  PSI
  4. BOLT: ASTM A307
  5. PENTAHEAD BOLT & WASHER SS304

BILL OF MATERIALS		
ITEM	QUANTITY	DESCRIPTION
A	0.26 YDS	H2 PRECAST MIX #6
B	23.49 LBS	REBAR - #5
C	18 SQ.FT	WWR- 4X4- W5
D	1 EA	HATCH-ej PRODUCT # 00826720B01
E	22 EA	3/4"-16X8" ASTM A-307 BOLTS

REINFORCING CUT LIST			
ITEM	QTY.	MATERIAL	DESCRIPTION
1	1	REBAR - #5	HOOP (SEE DETAIL)
2	1	REBAR - #5	HOOP (SEE DETAIL)
3	4	MESH	WWR 4 X 4- W5/W5
4	1	MESH	WWR 4 X 4- W5/W5

PRODUCT WEIGHT	
PRODUCT	WEIGHT
WSDOT T5 J-BOX	1,080 LBS. W/O HATCH ASSEMBLY



THIS DRAWING HAS BEEN PREPARED FOR YOUR REVIEW AND APPROVAL

- APPROVED AS SUBMITTED
- APPROVED AS CORRECTED
- RESUBMIT

PLEASE CHECK THE APPROPRIATE BOX AND RETURN ONE SIGNED COPY SO THAT WE MAY PROCEED WITH PRODUCTION.

SIGNED \_\_\_\_\_  
TITLE \_\_\_\_\_ DATE \_\_\_\_\_

THIS DRAWING IS INTENDED FOR THE USE OF THE INDIVIDUAL TO WHICH IT IS ADDRESSED AND CONTAINS INFORMATION THAT IS PRIVILEGED, CONFIDENTIAL AND EXEMPT FROM DISCLOSURE. IF YOU ARE NOT THE INTENDED RECIPIENT, PLEASE DO NOT DISSEMINATE, DISTRIBUTE OR COPY THIS BY E-MAIL OR OTHERWISE



(509) 884-6644 Phone (509) 884-4567 Fax

SALESMAN	NAME	DRAWN BY	DATE	DRAWING SCALE	AS SHOWN
		PPS	06/21/19		

**PROJECT**  
WSDOT  
**TYPE 5 J-BOX**

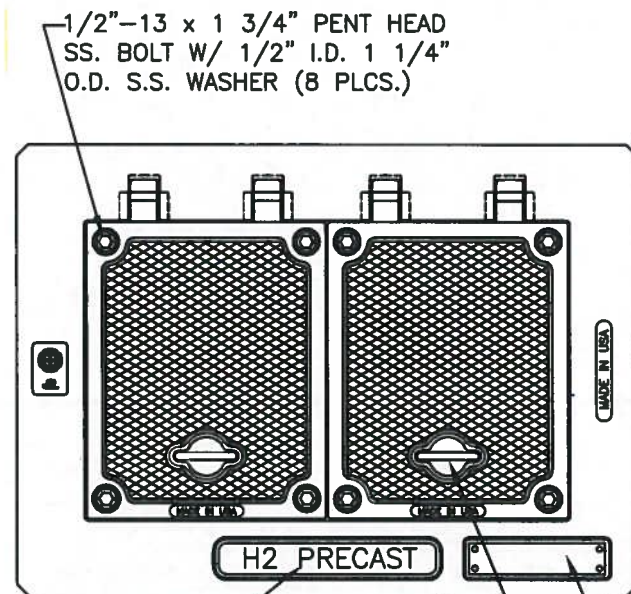
REV NO.	DESCRIPTION	DATE	TITAN #	TITAN #	SHEET 1 OF 1
-					

# 8267APT 8267ZPT Assembly

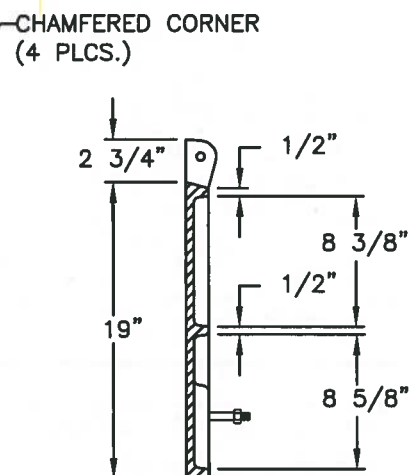
**APPROVED**

Washington State Department of Transportation  
HQ Traffic Operations Office

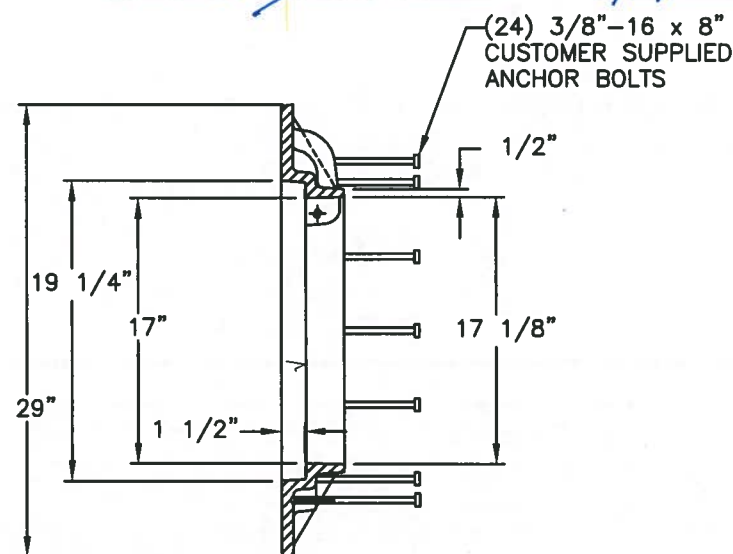
BY: MAH DATE: 8/16/2019



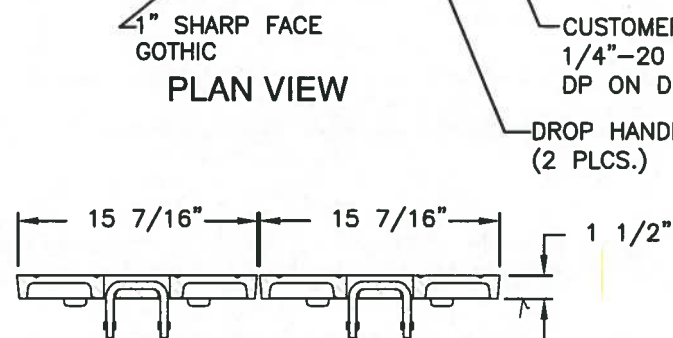
PLAN VIEW



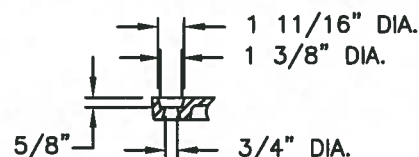
COVER SECTION



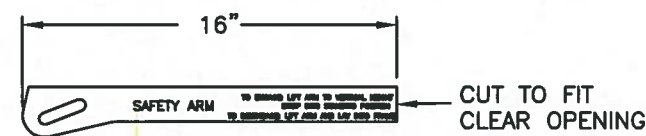
FRAME SECTION



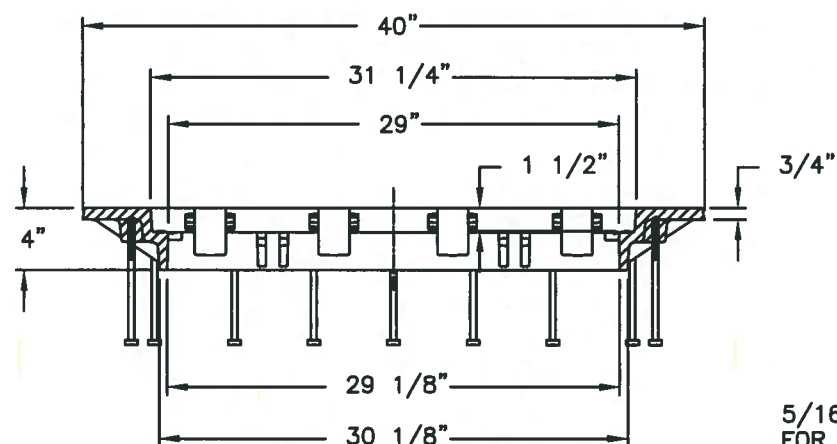
COVER SECTION



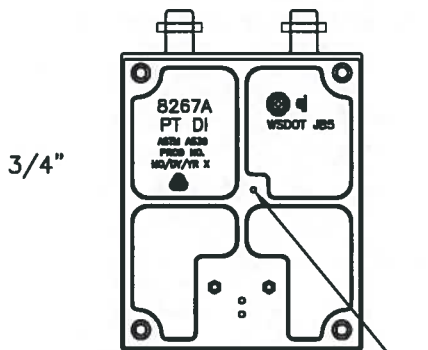
BOLT HOLE DETAIL



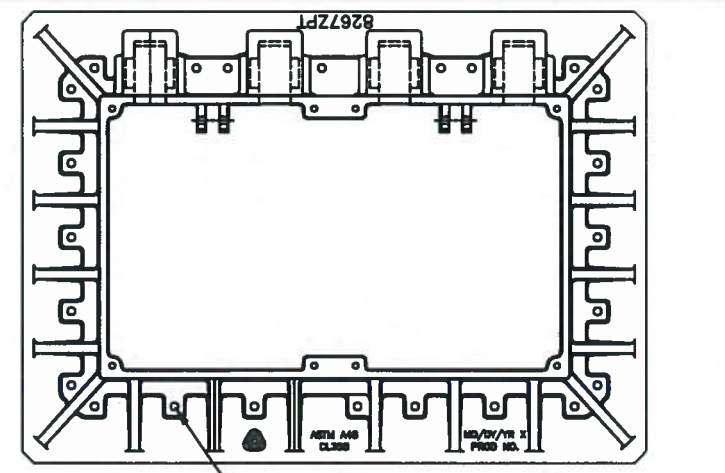
SAFETY BAR DETAIL



FRAME SECTION



COVER BOTTOM VIEW



FRAME BOTTOM VIEW

**Product Number**  
00826720B01

**Design Features**

- Materials
  - Cover: Ductile Iron (80-55-06)
  - Frame: Gray Iron (CL35B)
- Design Load: Heavy Duty
- Open Area: n/a
- Coating: Undipped
- Designates Machined Surface

**Certification**

- ASTM A48
- AASHTO M306
- Country of Origin: USA

**Major Components**

00826720  
00826715

**Drawing Revision**

10/13/2016 Designer: MAH  
3/29/2019 Revised By: MAH

**Disclaimer**

Weights (lbs./kg) dimensions (inches/mm) and drawings provided for your guidance. We reserve the right to modify specifications without prior notice.

CONFIDENTIAL: This drawing is the property of EJ GROUP, Inc., and embodies confidential information, registered marks, patents, trade secret information, and/or know how that is the property of EJ GROUP, Inc. Copyright © 2012 EJ GROUP, Inc. All rights reserved.

**Contact**

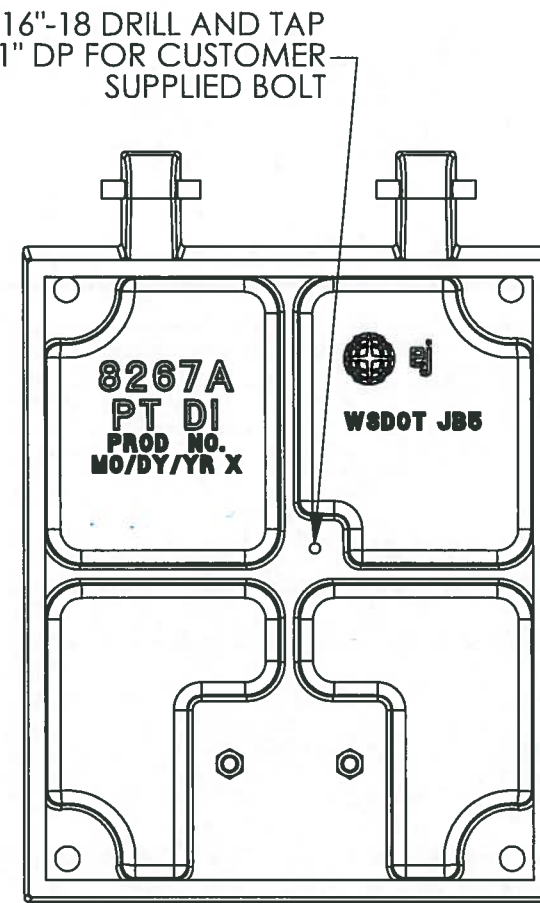
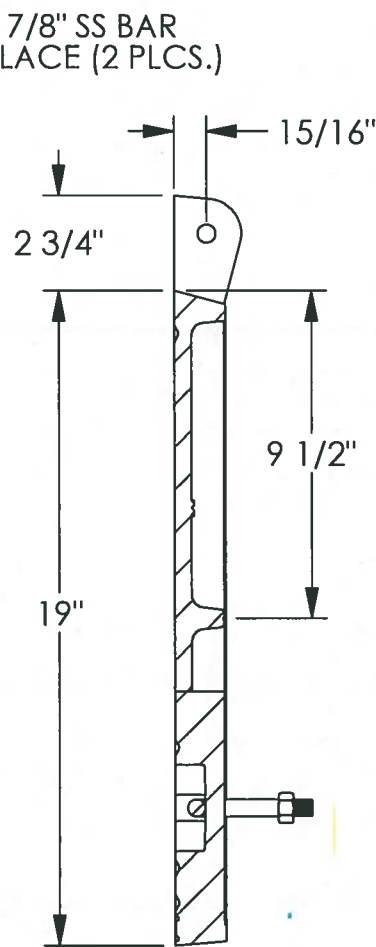
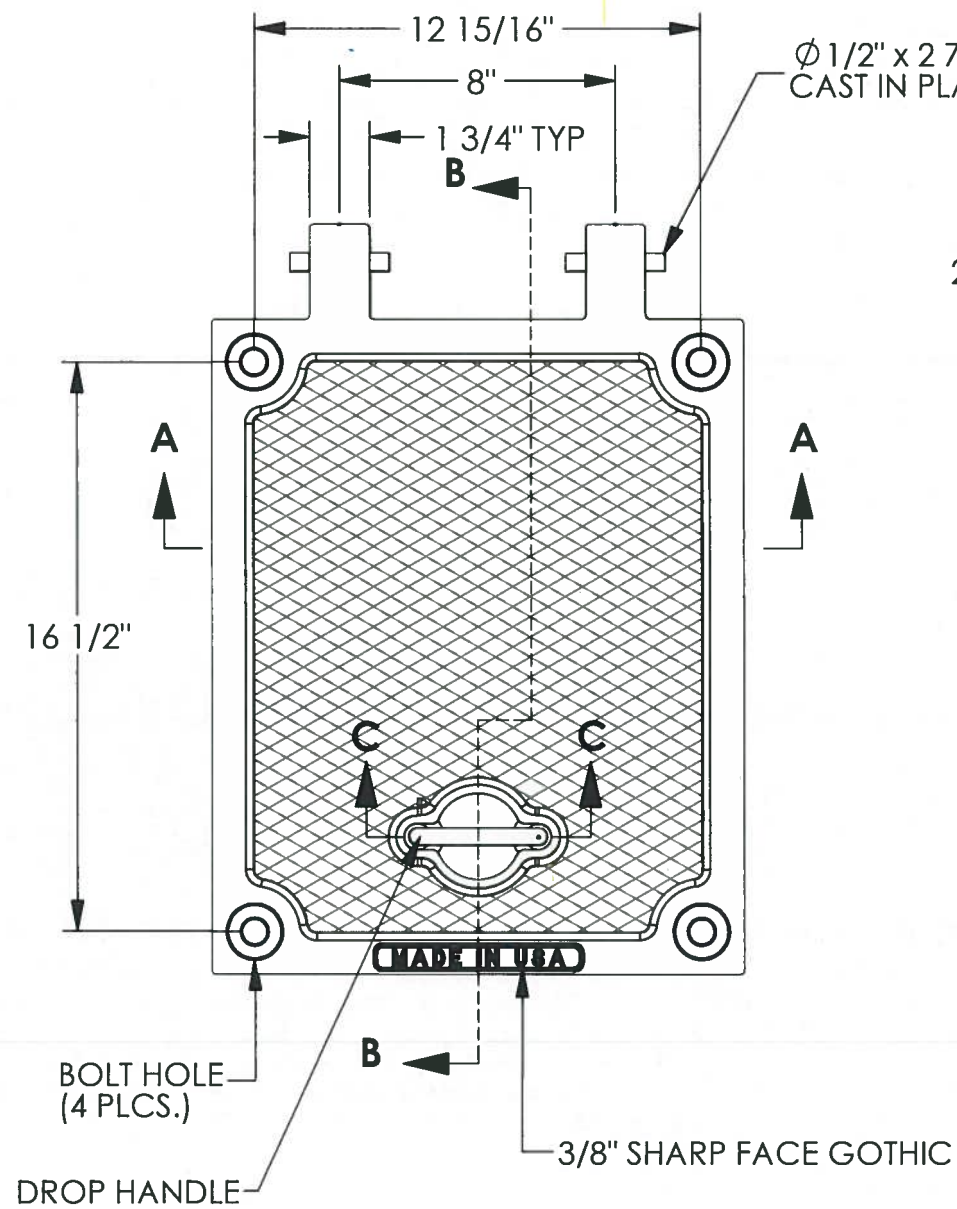
800 626 4653  
ejco.com

# 8267 Hatch Cover

**APPROVED**

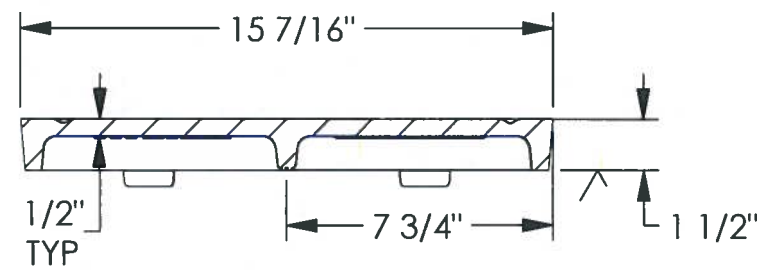
Washington State Department of Transportation  
 HQ Traffic Operations Office

BY: [Signature] DATE: 8/16/2019

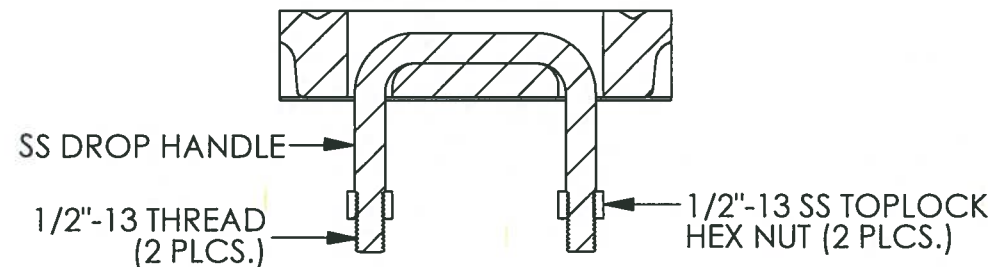


SECTION B-B

BOTTOM VIEW



SECTION A-A



SECTION C-C  
 SCALE 1 : 4

**Product Number**

00826720

**Design Features**

- Materials  
 Ductile Iron (80-55-06)
- Design Load  
 Heavy Duty
- Open Area  
 n/a
- Coating  
 Undipped
- √ Designates Machined Surface

**Certification**

- ASTM A536
- AASHTO M306
- Country of Origin: USA

**Drawing Revision**

- 6/10/2002 Designer: JIJ
- 8/10/2016 Revised By: DEF

**Disclaimer**

Weights (lbs/kg), dimensions (inches/mm) and drawings provided for your guidance. We reserve the right to modify specifications without prior notice.

CONFIDENTIAL: This drawing is the property of EJ Group, Inc. and embodies confidential information, registered marks, patents, trade secret information, and/or know how that is the property of EJ Group, Inc. Copyright © 2011 EJ Group, Inc. All rights reserved.

**Contact**

800 626 4653  
 ejco.com

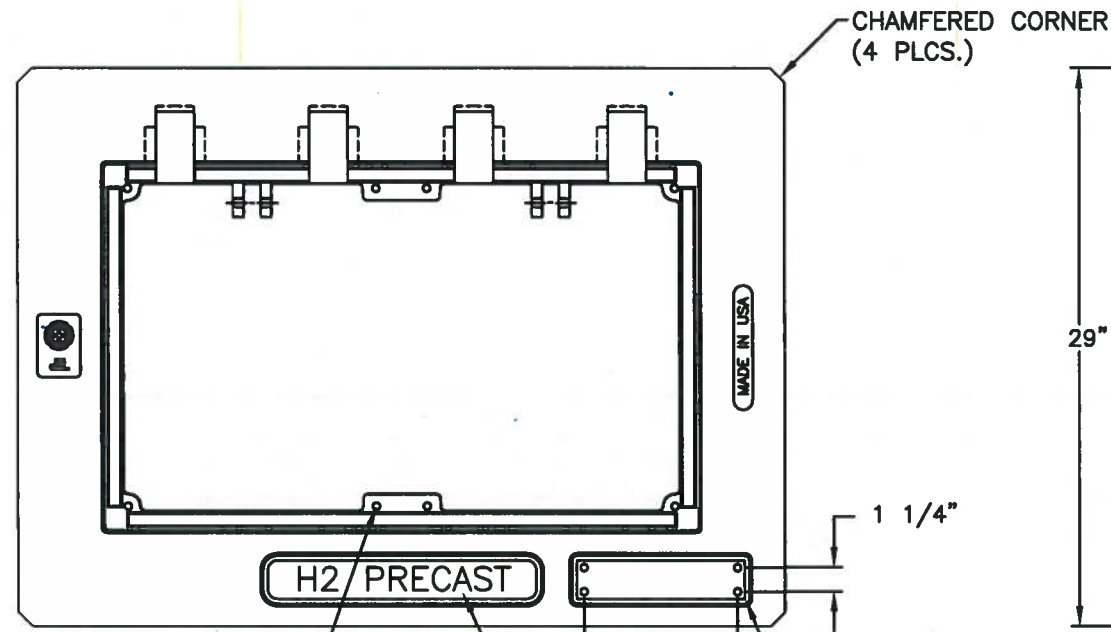
**\*NOTE: DEBURR ALL SHARP EDGES FOR SAFETY**

# 8267ZPT Hatch Frame

**APPROVED**

Washington State Department of Transportation  
 HQ Traffic Operations Office

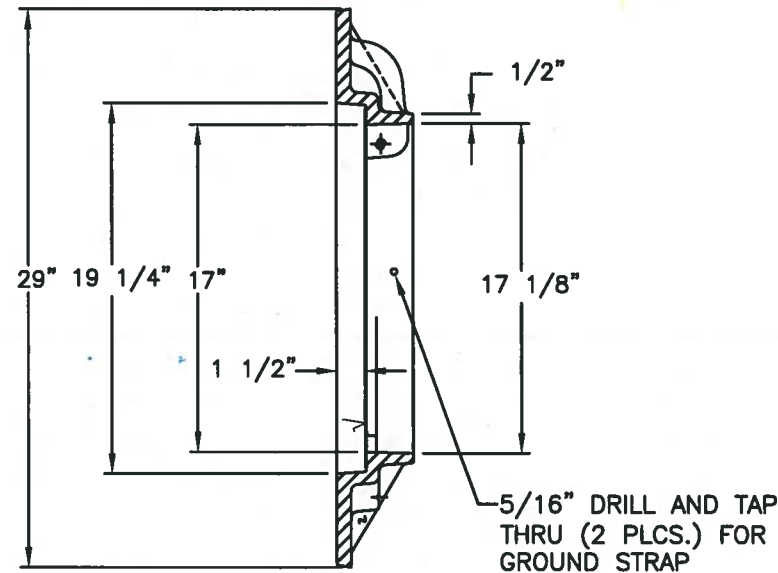
BY: *[Signature]* DATE: 8/16/2019



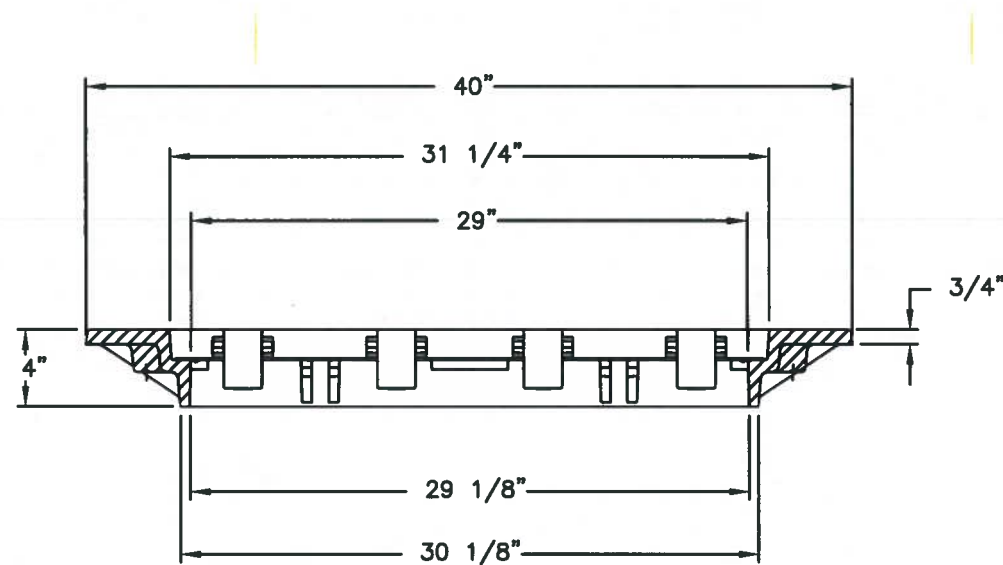
1/2"-13 DRILL AND TAP THRU ON DRILL DIMPLES (8 PLCS.) FOR 1/2"-13 X 1-3/4" S.S. PENT HEAD BOLTS

PLAN VIEW

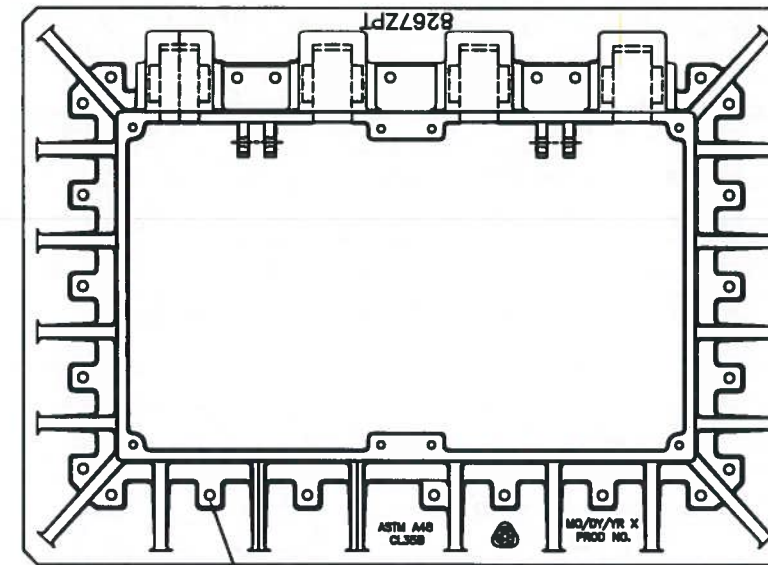
1/4"-20 DRILL AND TAP 1/2" DP ON DRILL DIMPLES (4 PLCS.)



FRAME SECTION



FRAME SECTION



BOTTOM VIEW

**Product Number**  
00826715

**Design Features**

- Materials  
Gray Iron (CL35B)
- Design Load  
Heavy Duty
- Open Area  
n/a
- Coating  
Undipped
- ✓ Designates Machined Surface

**Certification**

- ASTM A48
- AASHTO M306
- Country of Origin: USA

**Drawing Revision**

08/30/2016 Designer: MAH  
 08/09/2017 Revised By: DVD

**Disclaimer**

Weights (lbs./kg) dimensions (inches/mm) and drawings provided for your guidance. We reserve the right to modify specifications without prior notice.

CONFIDENTIAL: This drawing is the property of EJ GROUP, Inc., and embodies confidential information, registered marks, patents, trade secret information, and/or know how that is the property of EJ GROUP, Inc. Copyright © 2015 EJ GROUP, Inc. All rights reserved.

**Contact**

800 626 4653  
 ejco.com

NOTE: ALL MACHINING WILL BE OUTSOURCED