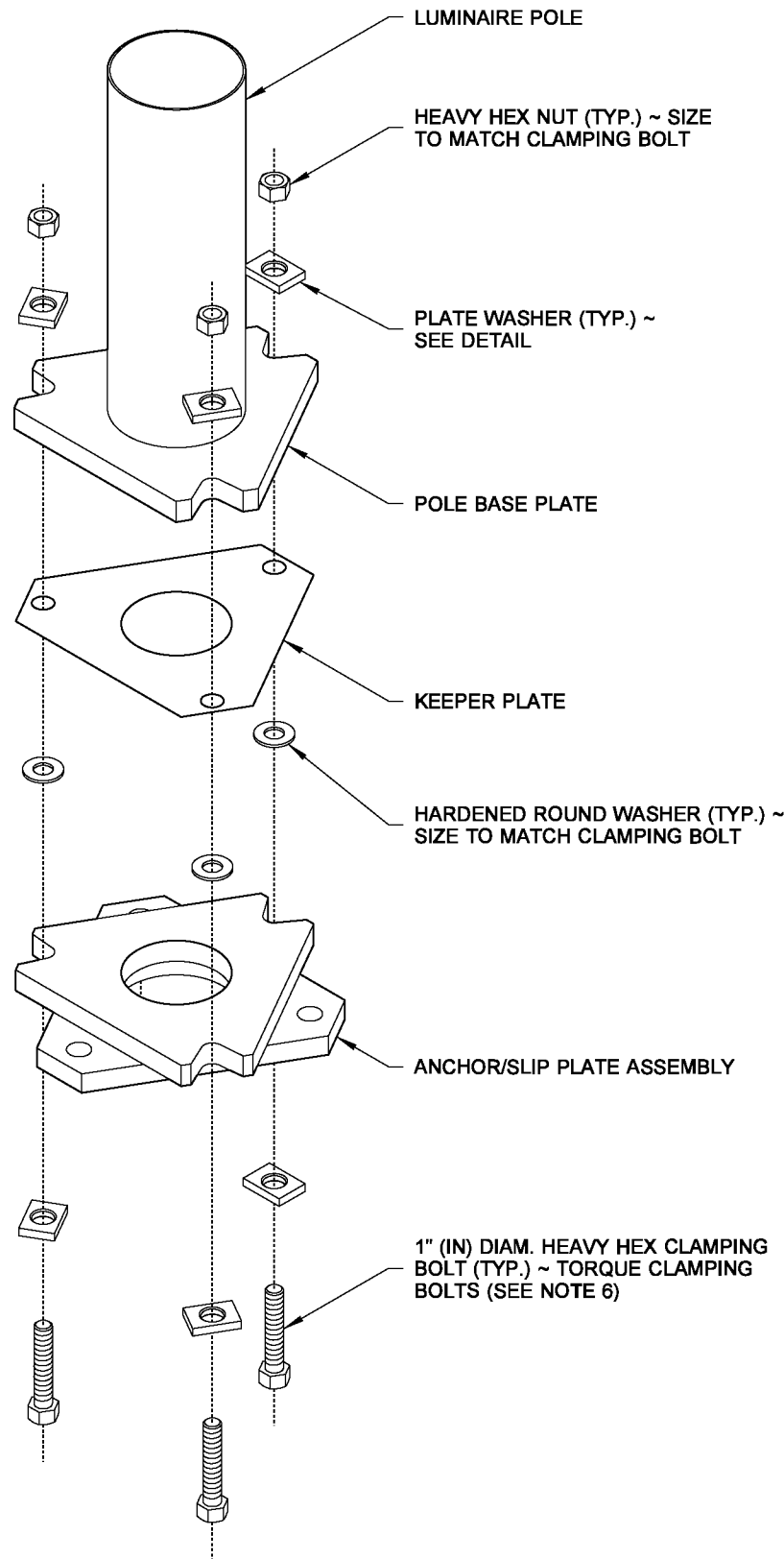
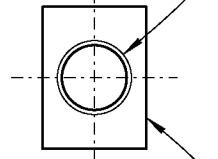


DRAWN BY: BILL BERENS



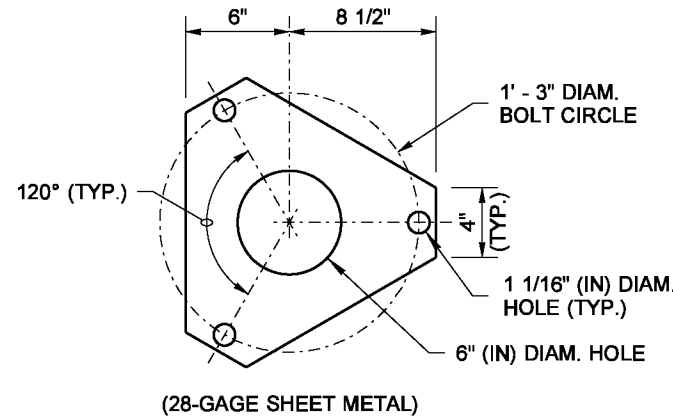
EXPLODED ISOMETRIC VIEW

1 1/4" (IN) DIAM. HOLE WITH SMOOTH CHAMFERED EDGES

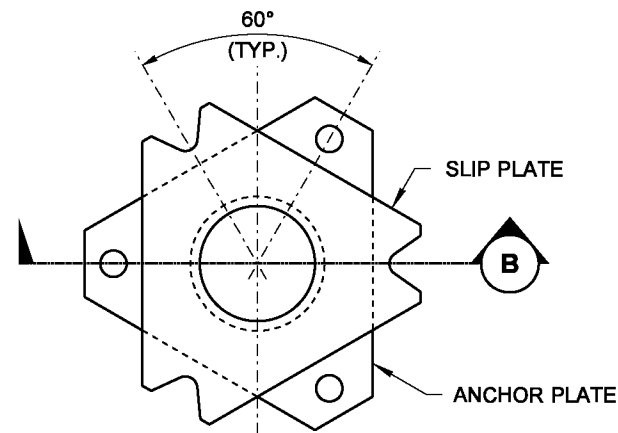


1/2" (IN) THICK x 2" (IN) WIDE x 2 3/4" (IN) LONG STEEL BAR

PLATE WASHER DETAIL



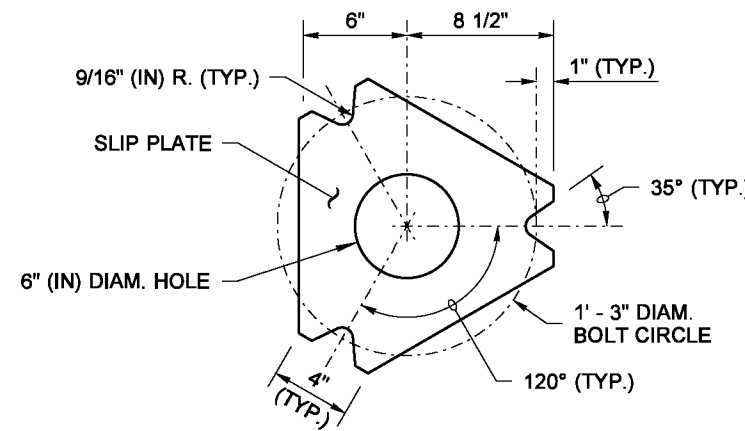
**TOP VIEW
KEEPER PLATE**



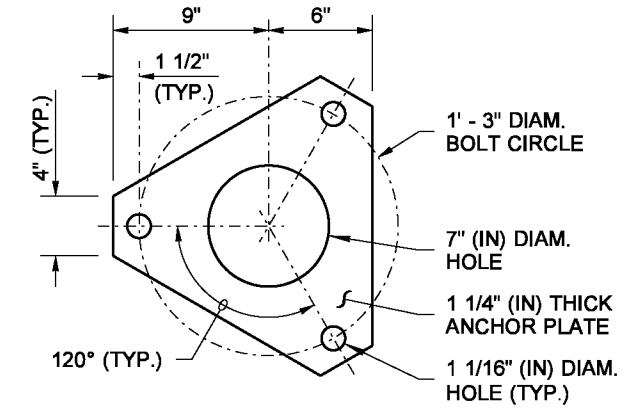
**TOP VIEW
ANCHOR/SLIP PLATE ASSEMBLY**

CLAMPING BOLT TABLE			
LUMINAIRE HEIGHT (FT) (H1)	MAST ARM TYPE	MAST ARM LENGTH (FT)	CLAMPING BOLT DIAMETER (IN) " D "
20' TO 50'	SINGLE	6' TO 16'	1"
20' TO 45'	DOUBLE	6' TO 8'	1"
46' TO 50'	DOUBLE	6' TO 8'	Ⓛ
20' TO 45'	DOUBLE	10' TO 16'	Ⓛ
46' TO 50'	DOUBLE	10' TO 16'	Ⓛ

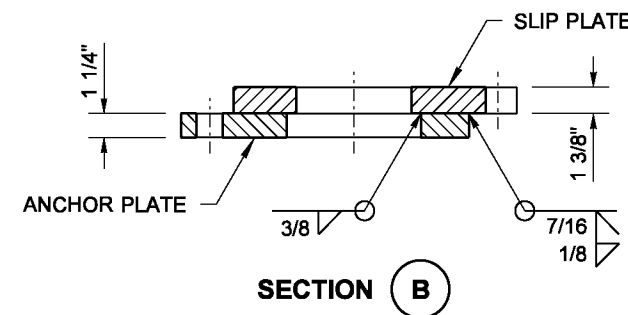
Ⓛ SLIP BASE NOT ALLOWED



**TOP VIEW
SLIP PLATE**

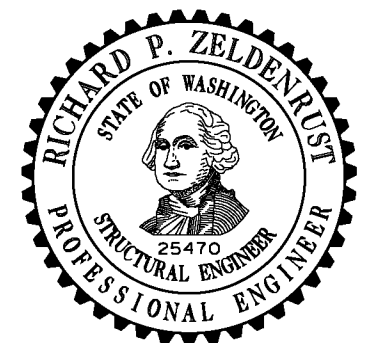


**TOP VIEW
ANCHOR PLATE**



NOTES

- 50' (ft) (H1) poles with double mast arms or poles weighing in excess of 1000 lbs. shall not be installed on a slip base.
- The Slip and Anchor Plates shall be manufactured from ASTM A572 GR.50 or ASTM A588. All Slip Plate notched surfaces shall be finished smooth.
- The clamping bolts shall be high-strength steel, manufactured from AASHTO M 164, with heavy hex nut and hardened washer. Galvanize the Clamping Bolts according to AASHTO M 232.
- Round and smooth all edges along wire-way to protect the conductors. See **Standard Plan J-28.70** for wiring details.
- Galvanize the Anchor/Slip Plate after fabrication according to AASHTO M 111.
- Clamping Bolt diameters may vary on existing installations. Replace them with the same size as the originals when repairing or reusing a luminaire pole. For 1" (in) clamping bolts, tighten to 95 ft-lbs. For 1 1/4" (in) clamping bolts, tighten to 104 ft-lbs. **DO NOT OVERTIGHTEN.** After state inspection, burr threads to prevent nut rotation.



**STEEL LIGHT STANDARD ANCHOR/SLIP PLATE FOR SLIP BASE
STANDARD PLAN J-28.42-01**

SHEET 1 OF 1 SHEET

APPROVED FOR PUBLICATION