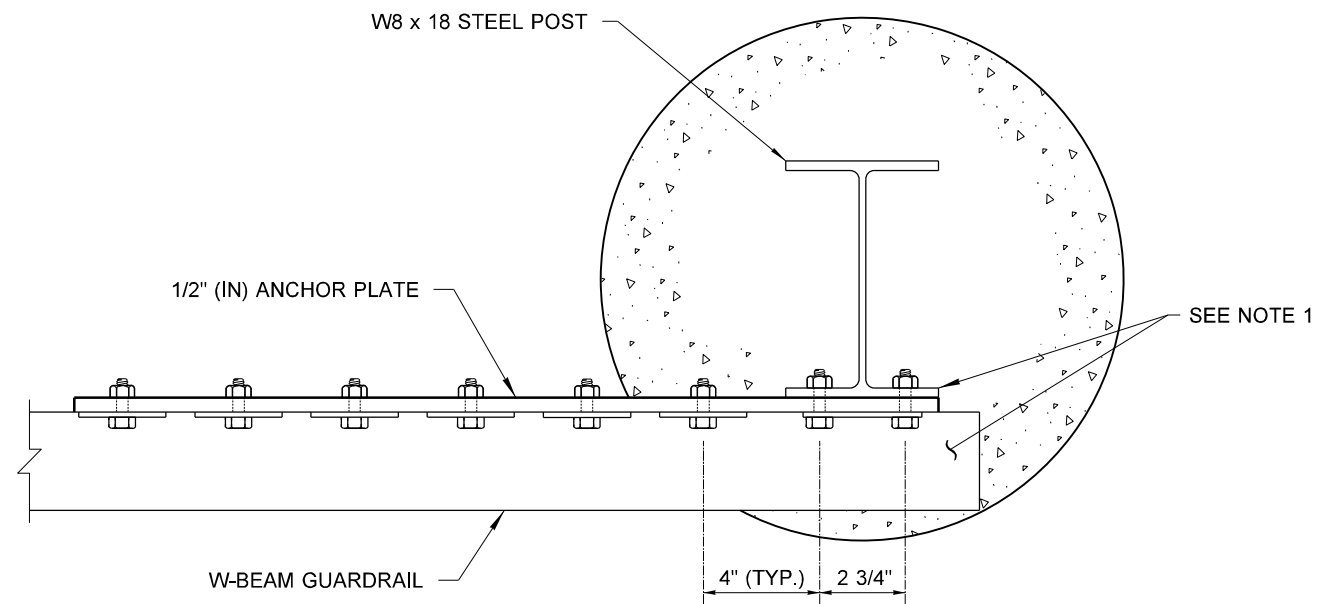
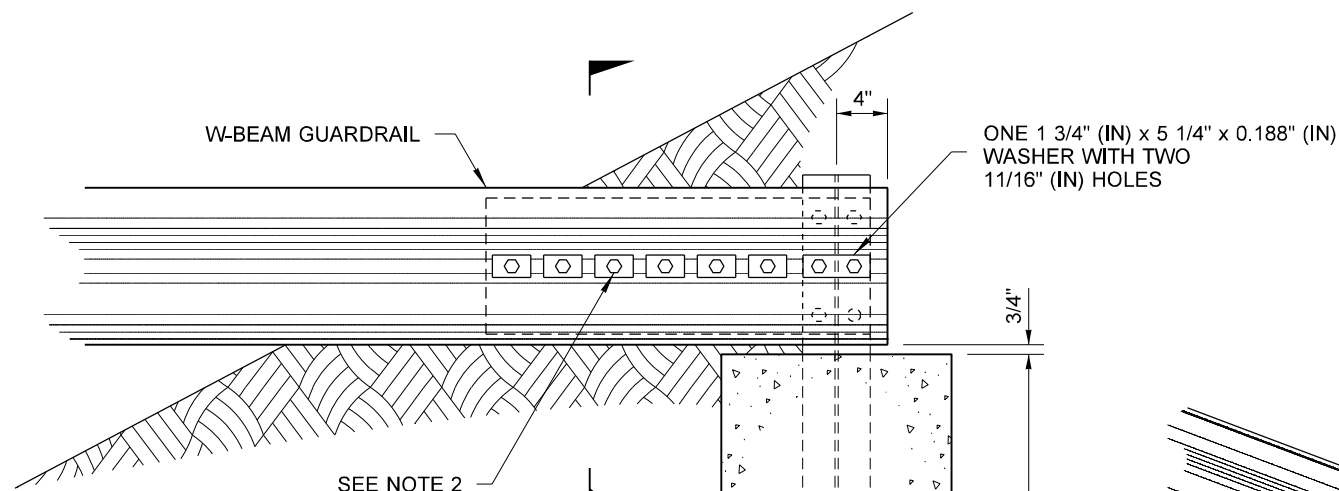


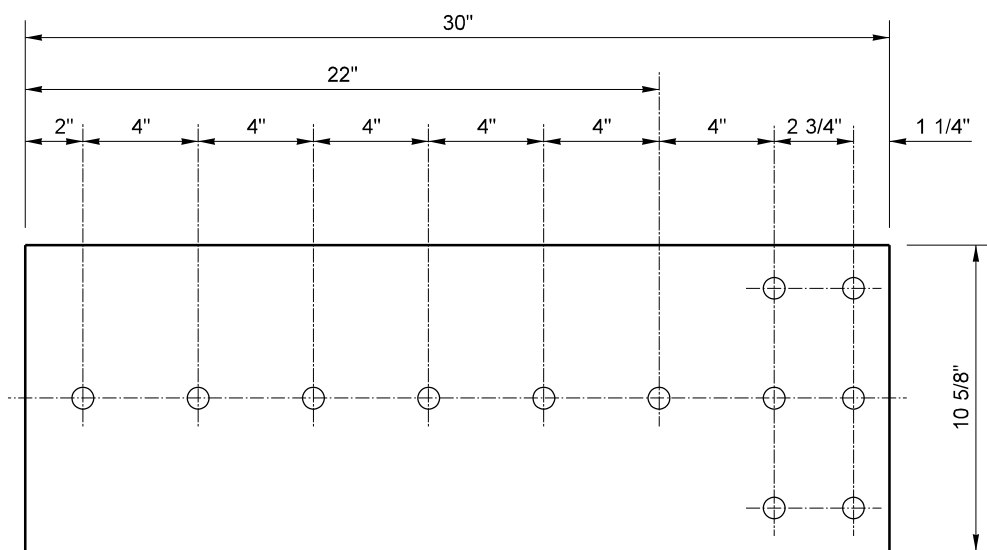
DRAWN BY: BILL BERENS



PLAN



ELEVATION



ANCHOR PLATE
SEE STD. SPEC. SECTION 9-16.3(5)

6' - 0" POST
(OR 3' - 0" MIN.
IN SOLID ROCK)

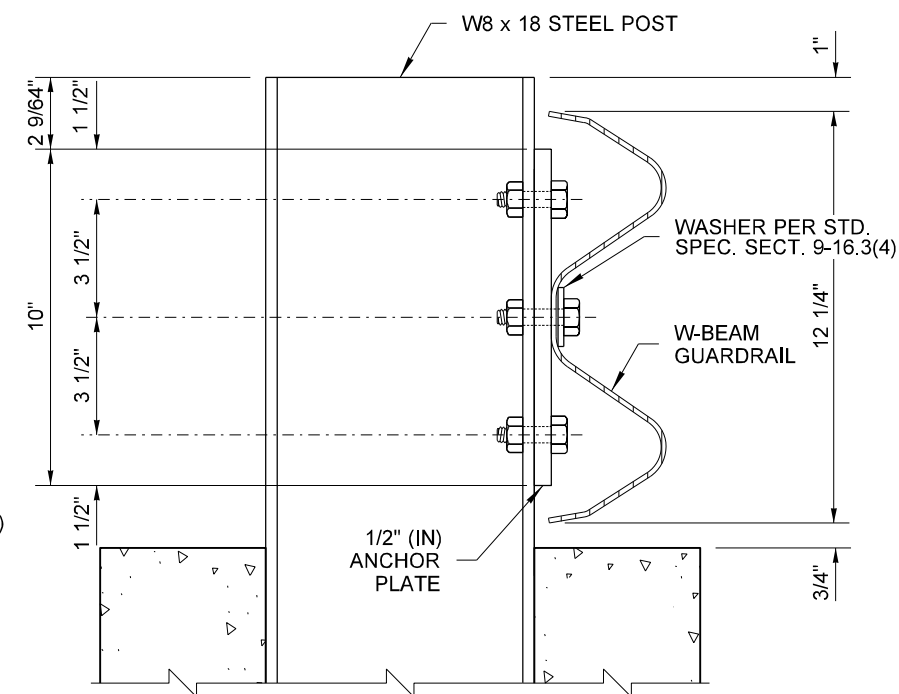
COMMERCIAL
CONCRETE

5' - 0" (OR 2' - 0" MIN. IN SOLID ROCK)

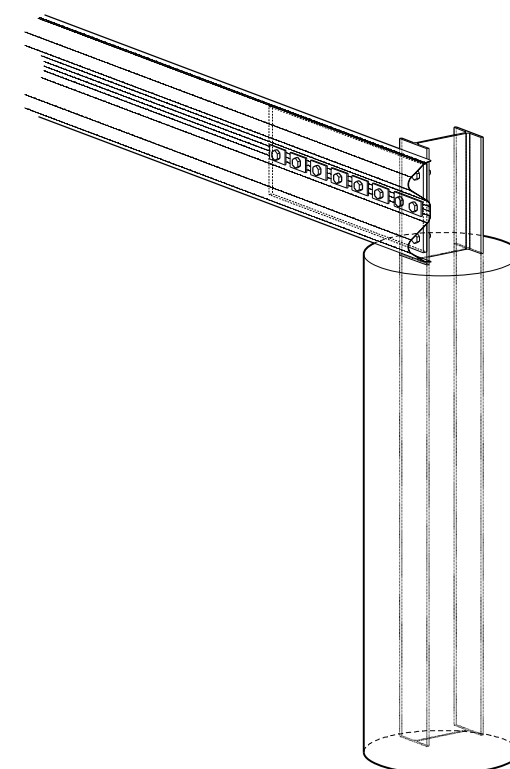
18" DIAM.

NOTES

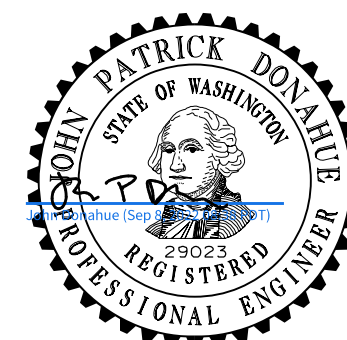
1. Rail section and W8 x 18 steel post shall be fabricated to receive 5/8" (in) hex head bolts as shown.
2. All bolts shall be high strength 5/8" (in) hex head bolts with anchor rail washers.



SECTION B



ISOMETRIC



Sep 8, 2022

**BEAM GUARDRAIL ANCHOR
TYPE 2**

STANDARD PLAN C-6a

SHEET 1 OF 1 SHEET

APPROVED FOR PUBLICATION

Mark Gaines
Mark Gaines (Sep 8, 2022 10:15 PDT)

Sep 8, 2022

STATE DESIGN ENGINEER



Washington State Department of Transportation