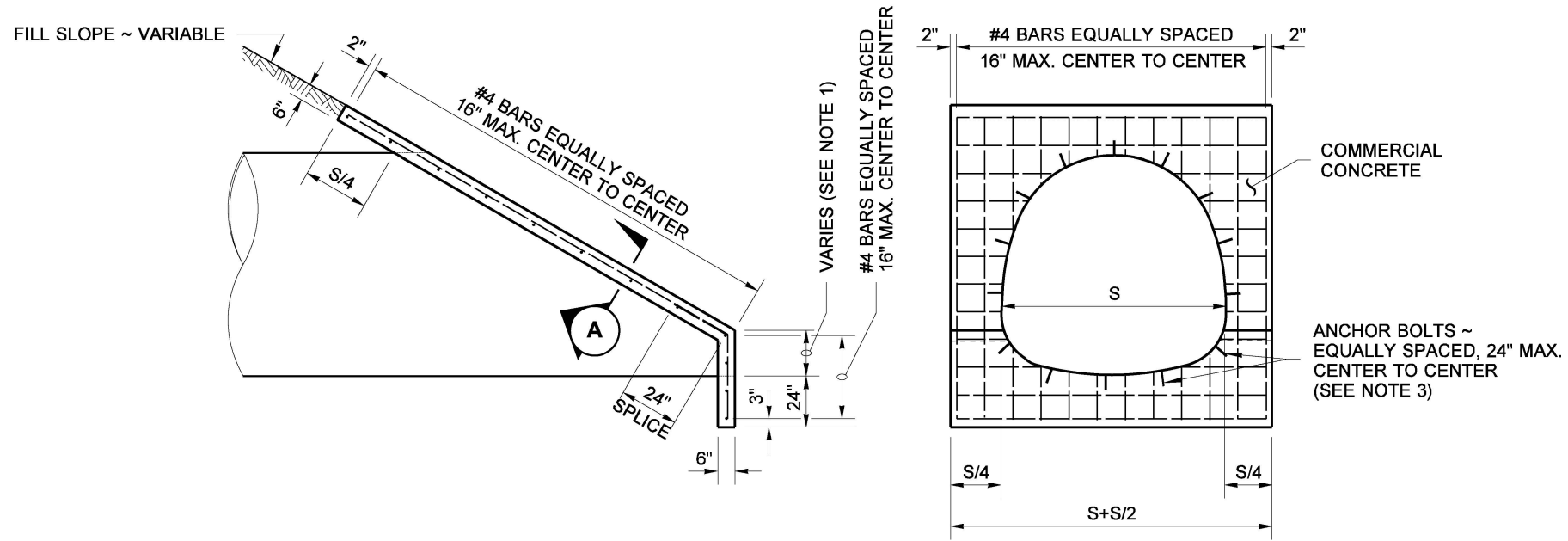
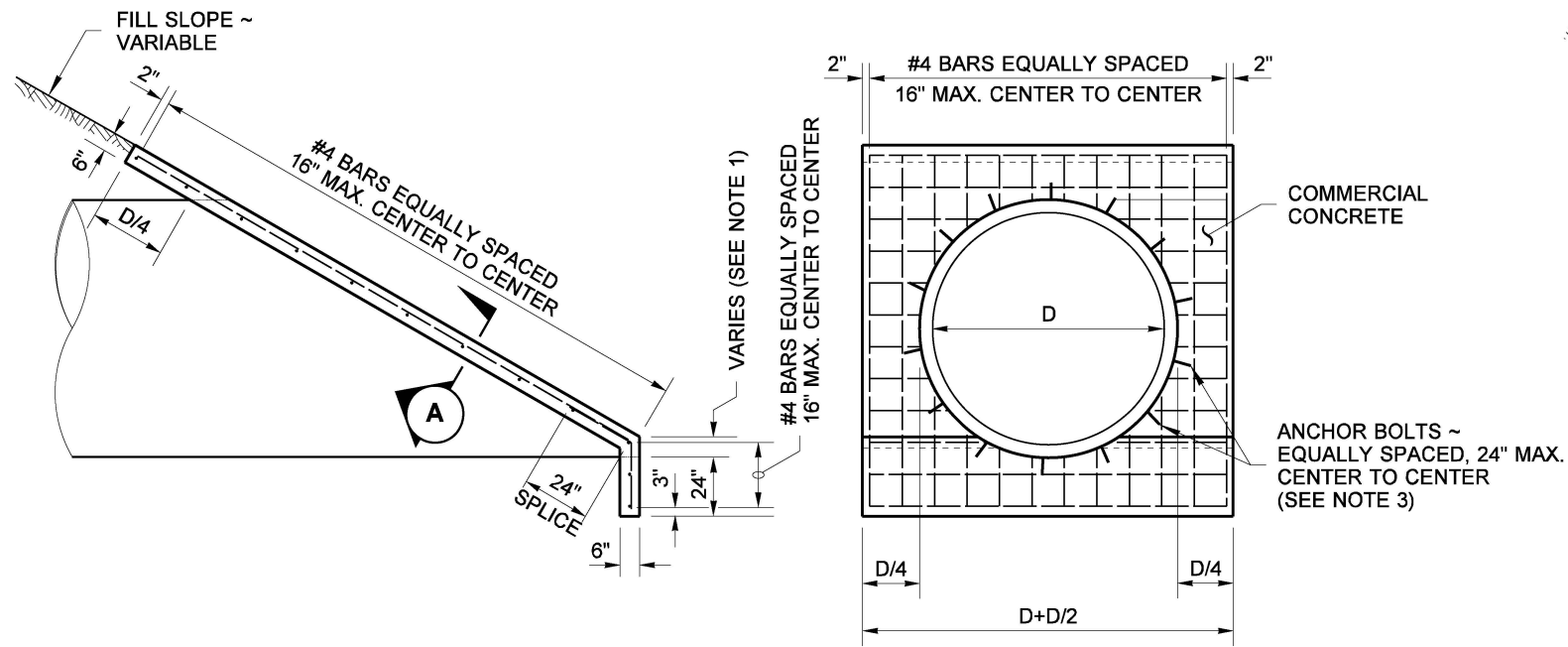


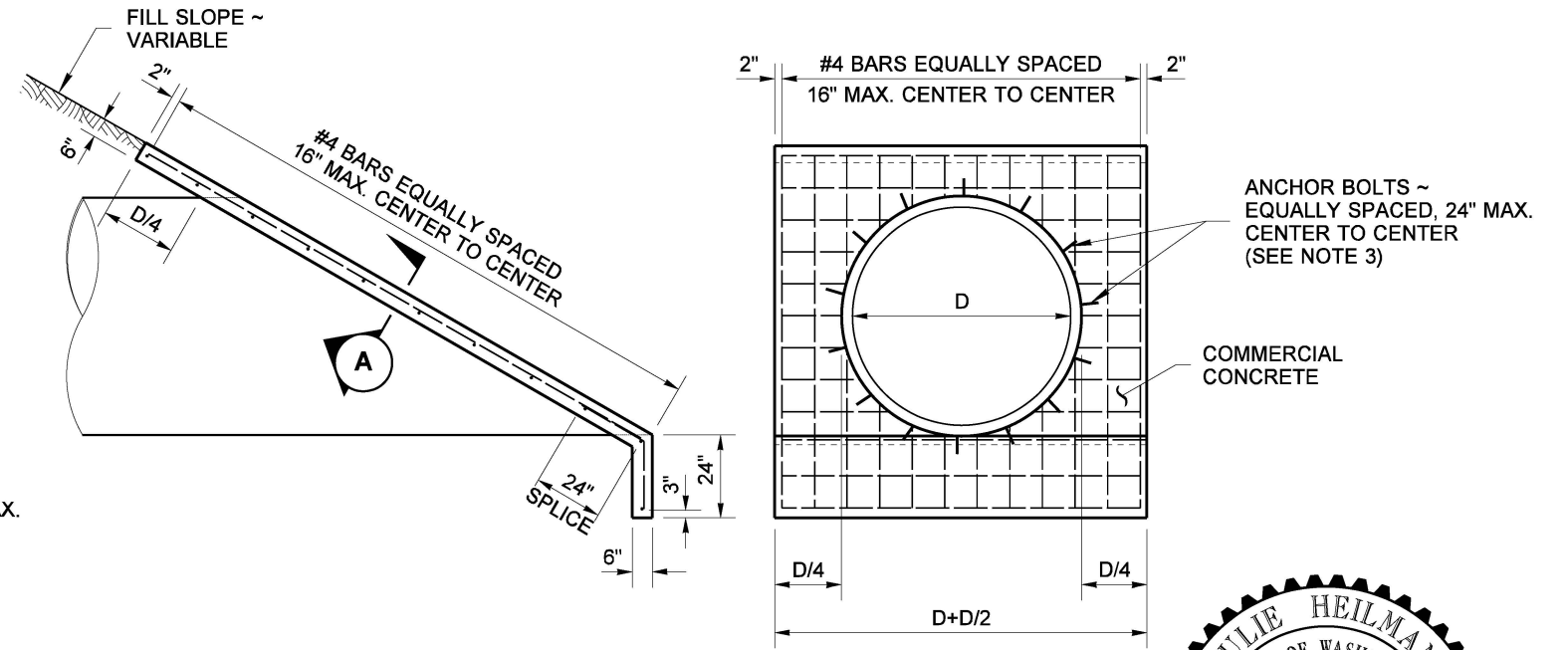
DRAWN BY: FERN LIDDELL



STRUCTURAL PLATE PIPE ARCHES AND UNDERPASSES

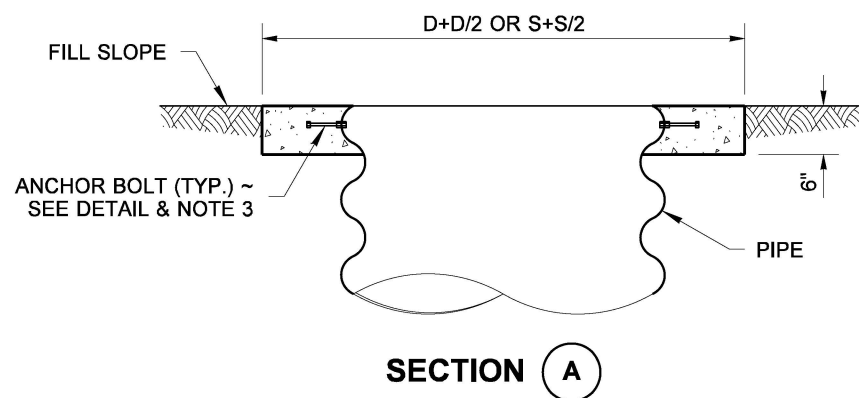


STEP MITERED PIPE

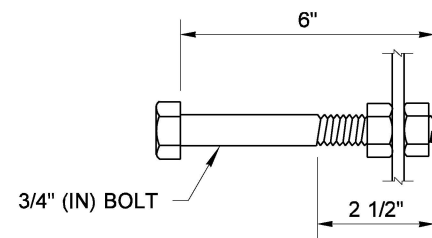


FULL MITERED PIPE

PIPES AND STRUCTURAL PLATE PIPES



SECTION A



ANCHOR BOLT DETAIL
SEE STANDARD SPECIFICATION SECTION 9-06.5(1)

NOTES

1. The variable dimension indicated for the height of step for step mitered pipes shall conform to the manufacturers recommendations unless specified differently on the plans or in the Special Provisions.
2. Reinforcing steel shall have 1 1/2" (in) min. clear cover to all concrete surfaces.
3. Headwalls for concrete culvert pipe may omit anchor bolt attachment.
4. When steel pipe safety bars are used, headwall thickness shall be increased to 8" (in).



Aug 17, 2021

HEADWALLS FOR CULVERT PIPE AND UNDERPASS

STANDARD PLAN B-75.20-03

SHEET 1 OF 1 SHEET

APPROVED FOR PUBLICATION

[Signature]

Aug 17, 2021

STATE DESIGN ENGINEER



Washington State Department of Transportation