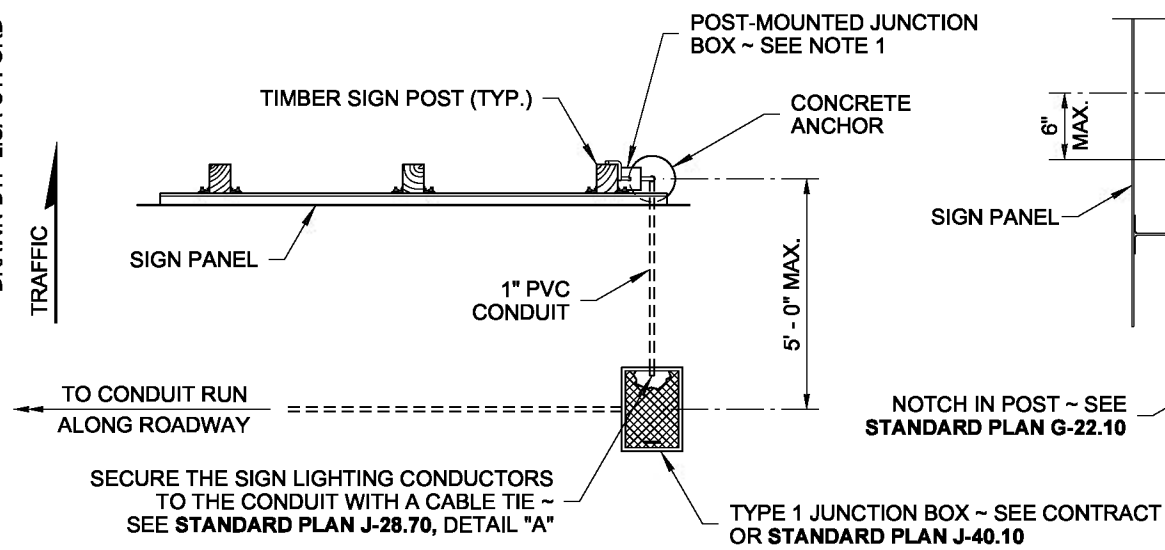
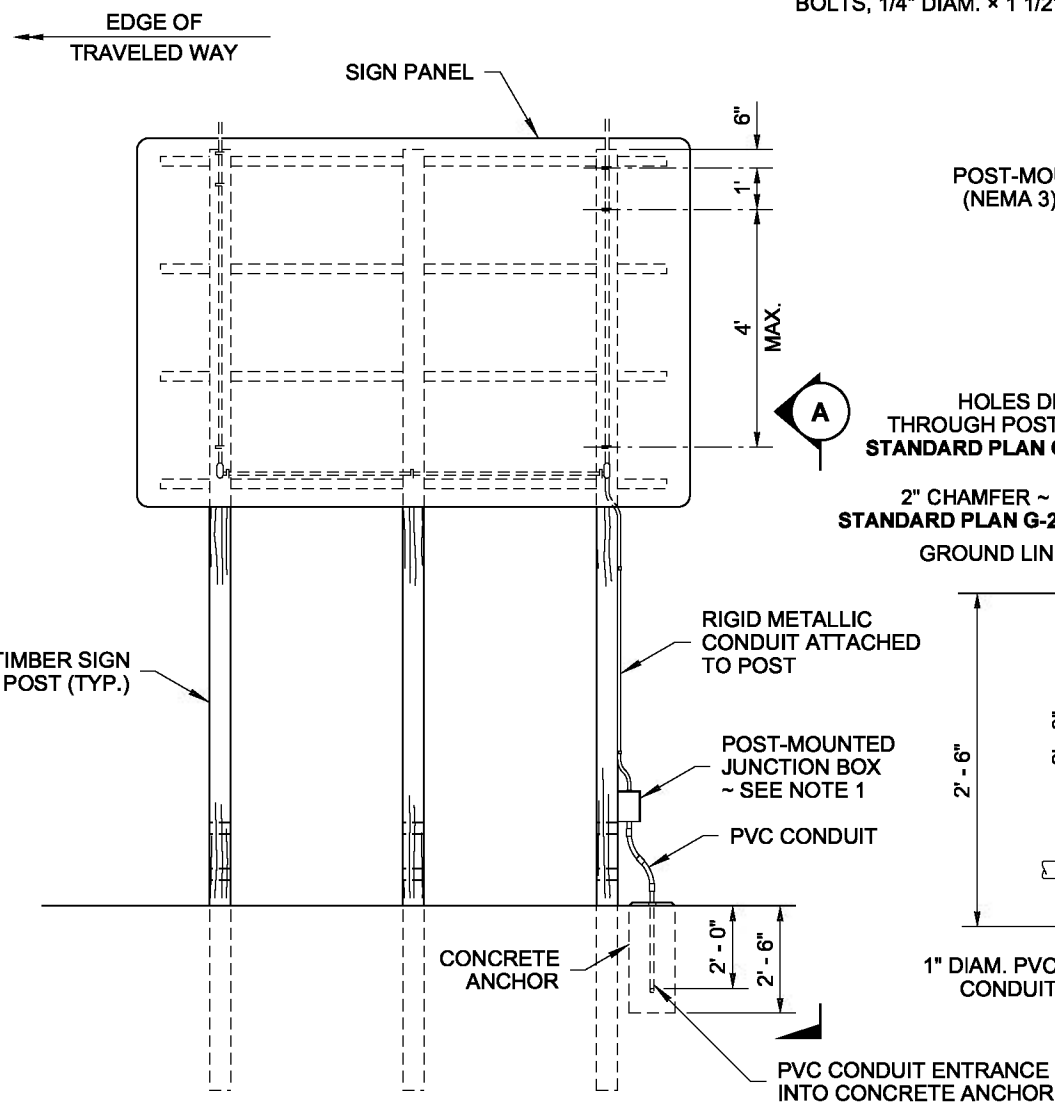


DRAWN BY: LISA CYFORD

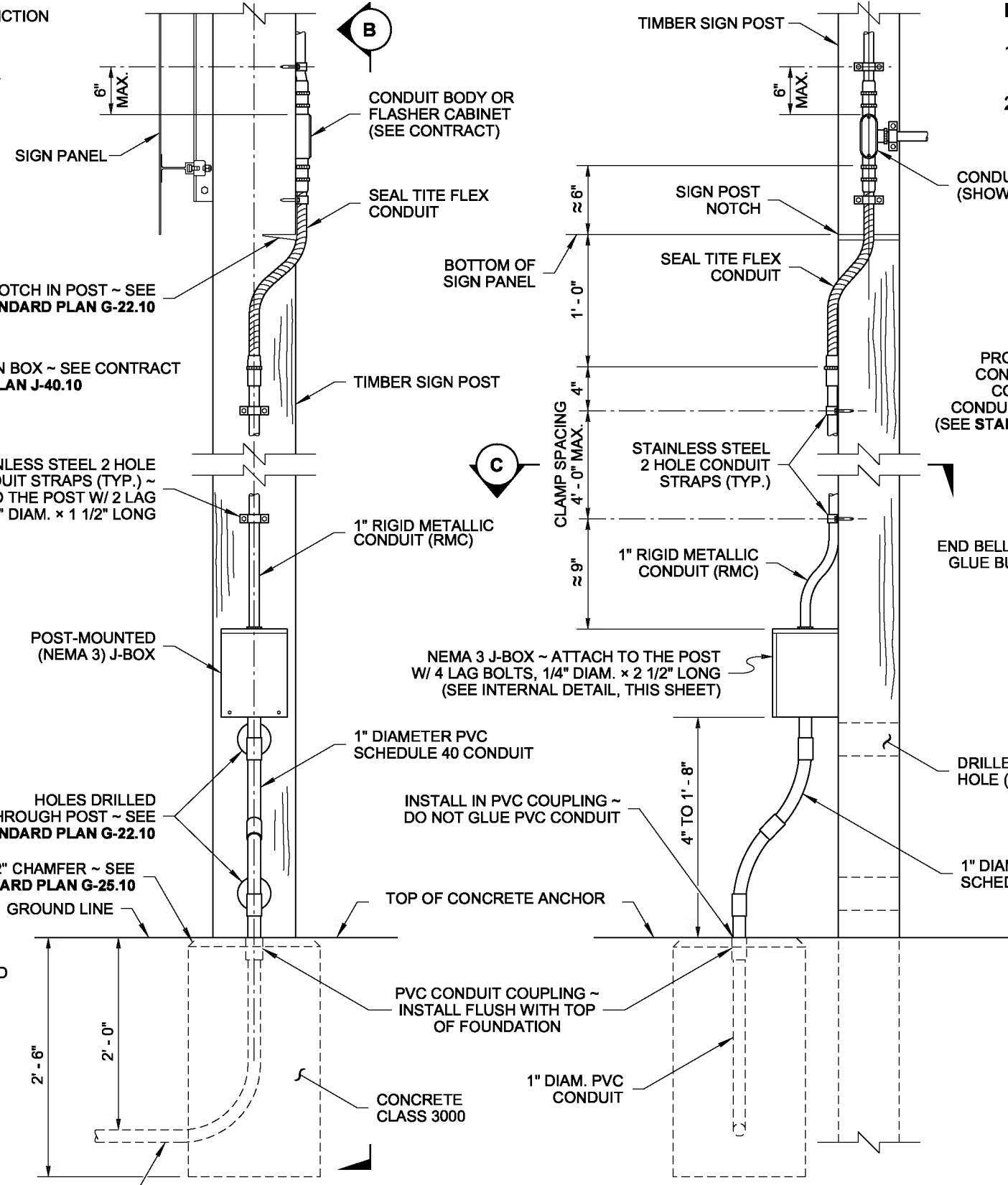


PLAN



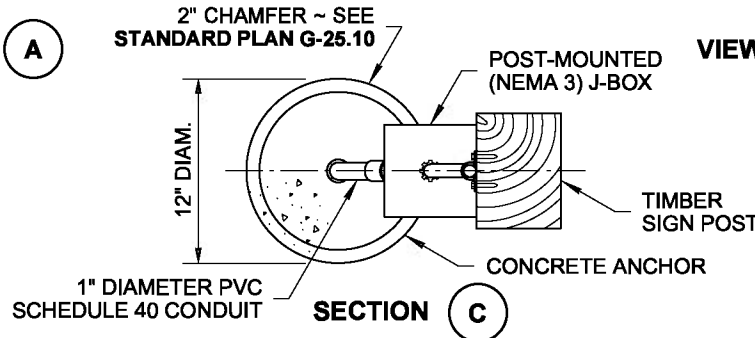
ELEVATION

**JUNCTION BOX ATTACHMENT TO TIMBER SIGN SUPPORT**



VIEW A

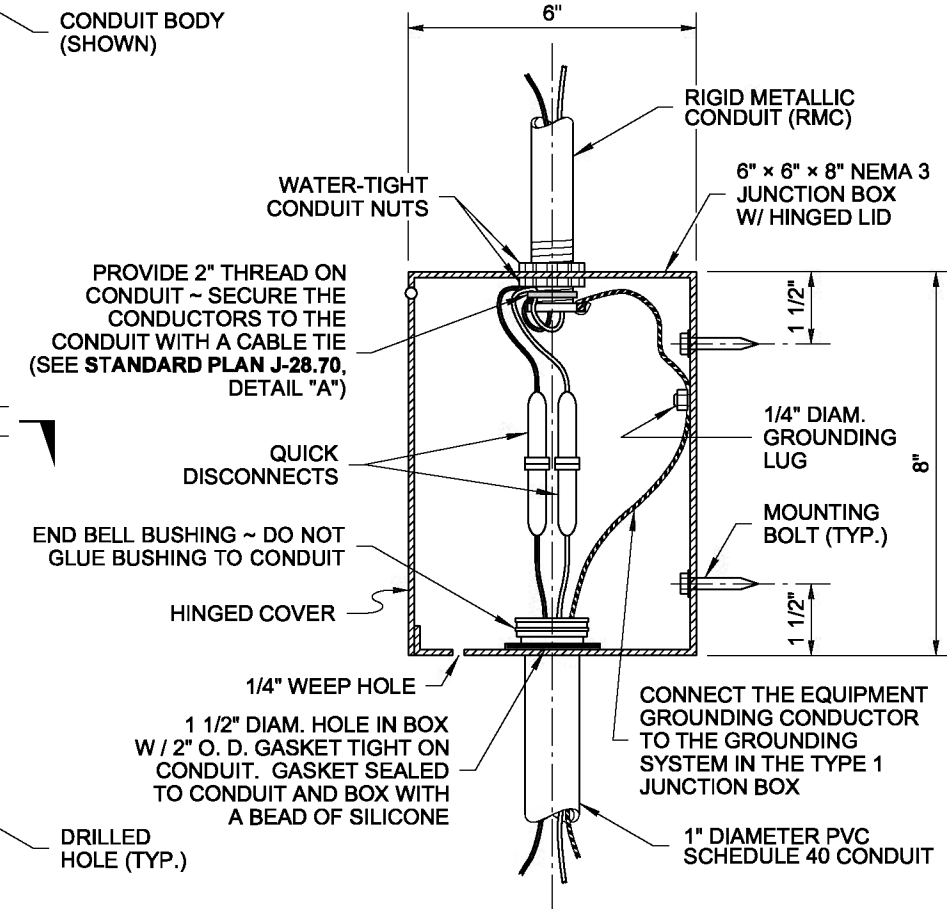
VIEW B



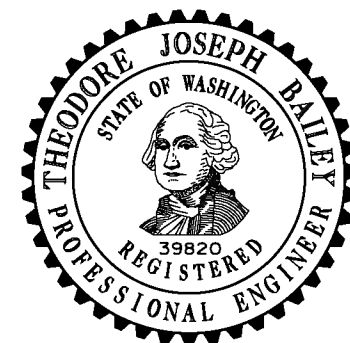
SECTION C

**NOTE**

1. Install the Junction Box on the Timber Sign Post or the Steel Sign Support that is farthest from the roadway.
2. See **Standard Plan J-21.16** for Flashing Beacon Installation details. See **Standard Plan J-21.17** for Electrical Wiring details.



JUNCTION BOX INTERNAL DETAIL



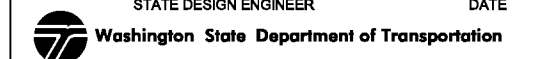
NOTE: THIS PLAN IS NOT A LEGAL ENGINEERING DOCUMENT UNTIL ELECTRONICALLY SIGNED BY THE ENGINEER AND APPROVED FOR PUBLICATION. IT IS TO BE FILED AT THE WASHINGTON STATE DEPARTMENT OF TRANSPORTATION. A COPY MAY BE OBTAINED UPON REQUEST.

**SIGN POST-MOUNTED JUNCTION BOX**  
**STANDARD PLAN J-40.35-01**

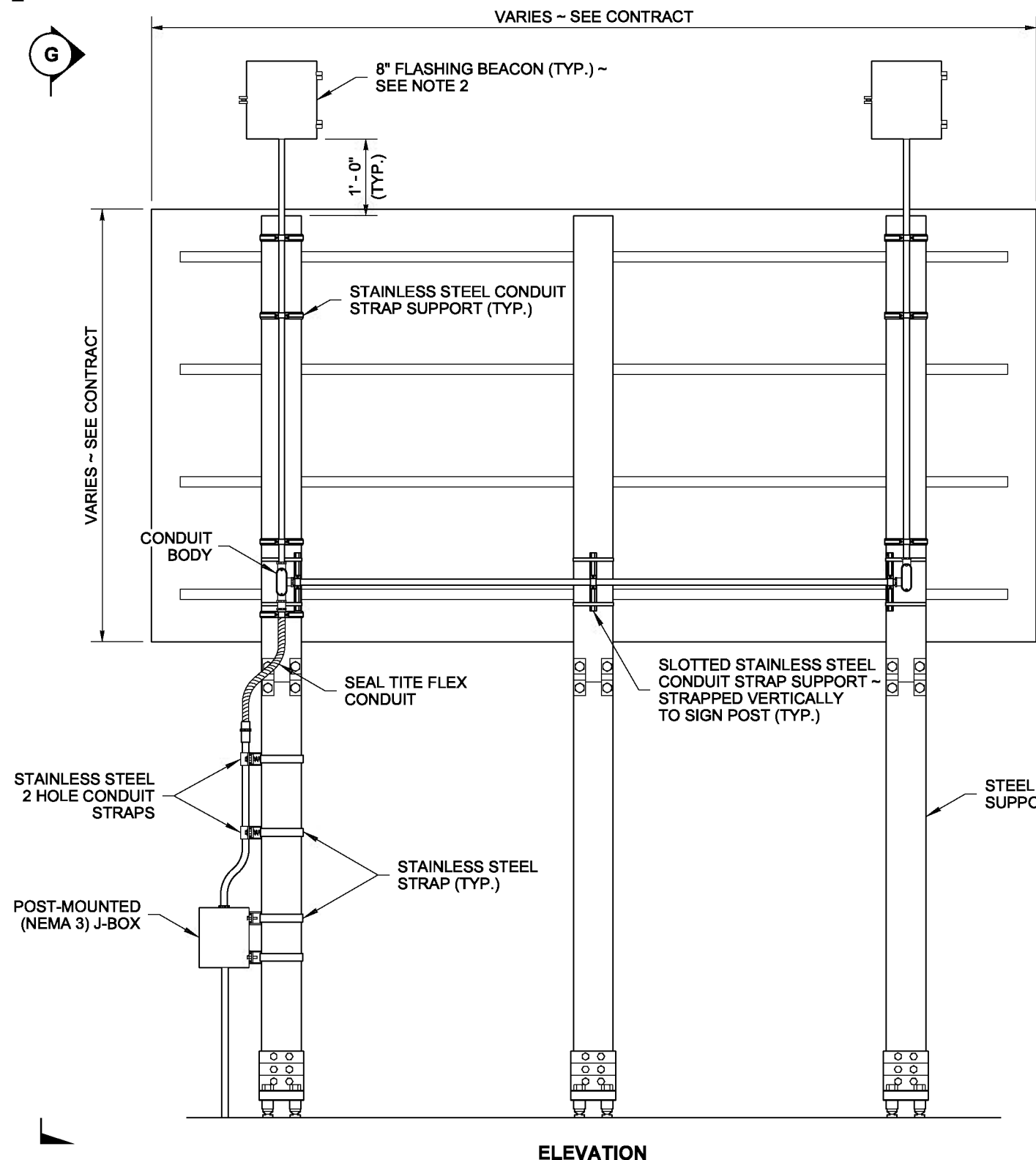
SHEET 1 OF 3 SHEETS

APPROVED FOR PUBLICATION

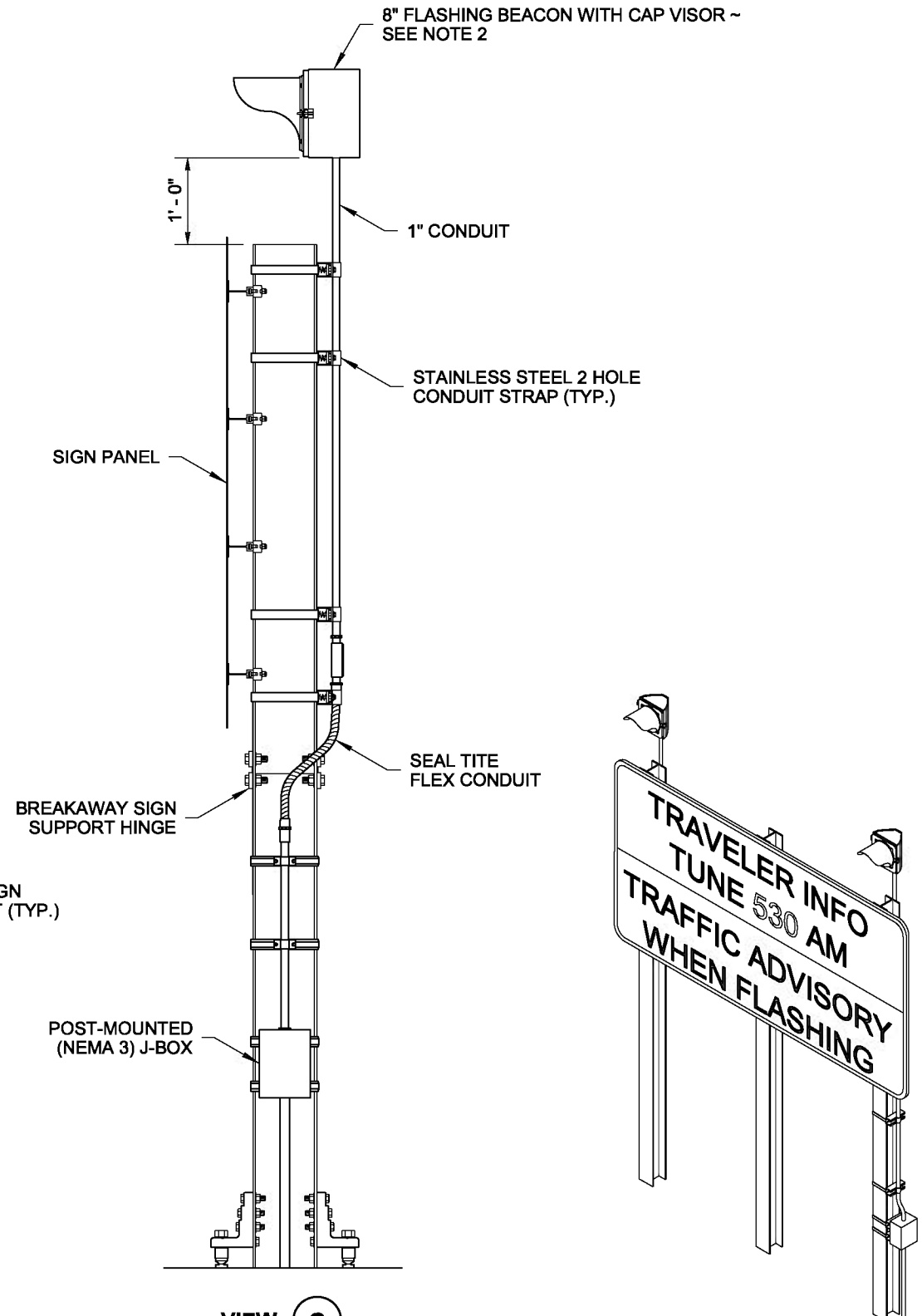
**Pasco Bakotich III** 5/29/13  
 STATE DESIGN ENGINEER DATE



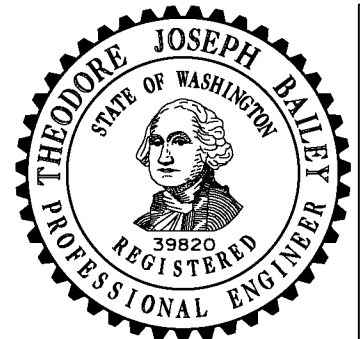
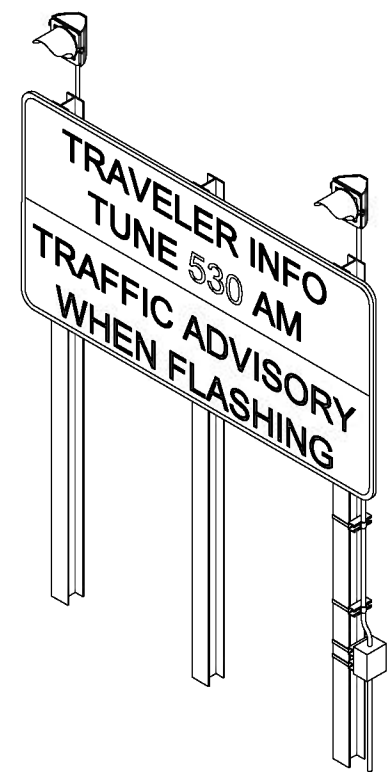




**FLASHING BEACON ATTACHMENT**  
(STEEL SIGN SUPPORT SHOWN)



**RIGHT ISOMETRIC VIEW**  
TRAVELER INFORMATION SIGN SHOWN ~  
SEE CONTRACT FOR SIGN MESSAGE AND SIZE



NOTE: THIS PLAN IS NOT A LEGAL ENGINEERING DOCUMENT UNTIL ELECTRONICALLY SIGNED BY THE ENGINEER AND APPROVED FOR PUBLICATION. IS KEEP ON FILE AT THE WASHINGTON STATE DEPARTMENT OF TRANSPORTATION. A COPY MAY BE OBTAINED UPON REQUEST.

**SIGN POST-MOUNTED JUNCTION BOX**  
**STANDARD PLAN J-40.35-01**

SHEET 3 OF 3 SHEETS

APPROVED FOR PUBLICATION

**Pasco Bakotich III** 5/29/13  
STATE DESIGN ENGINEER DATE

Washington State Department of Transportation