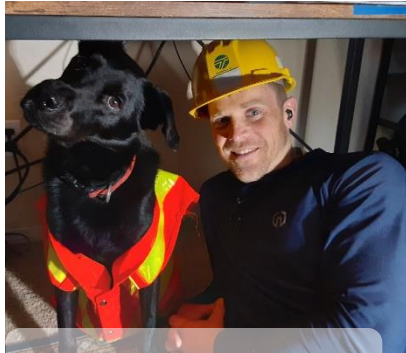


Overview



Statewide Design Training



**Dan
Backman**

Statewide Design Trainers

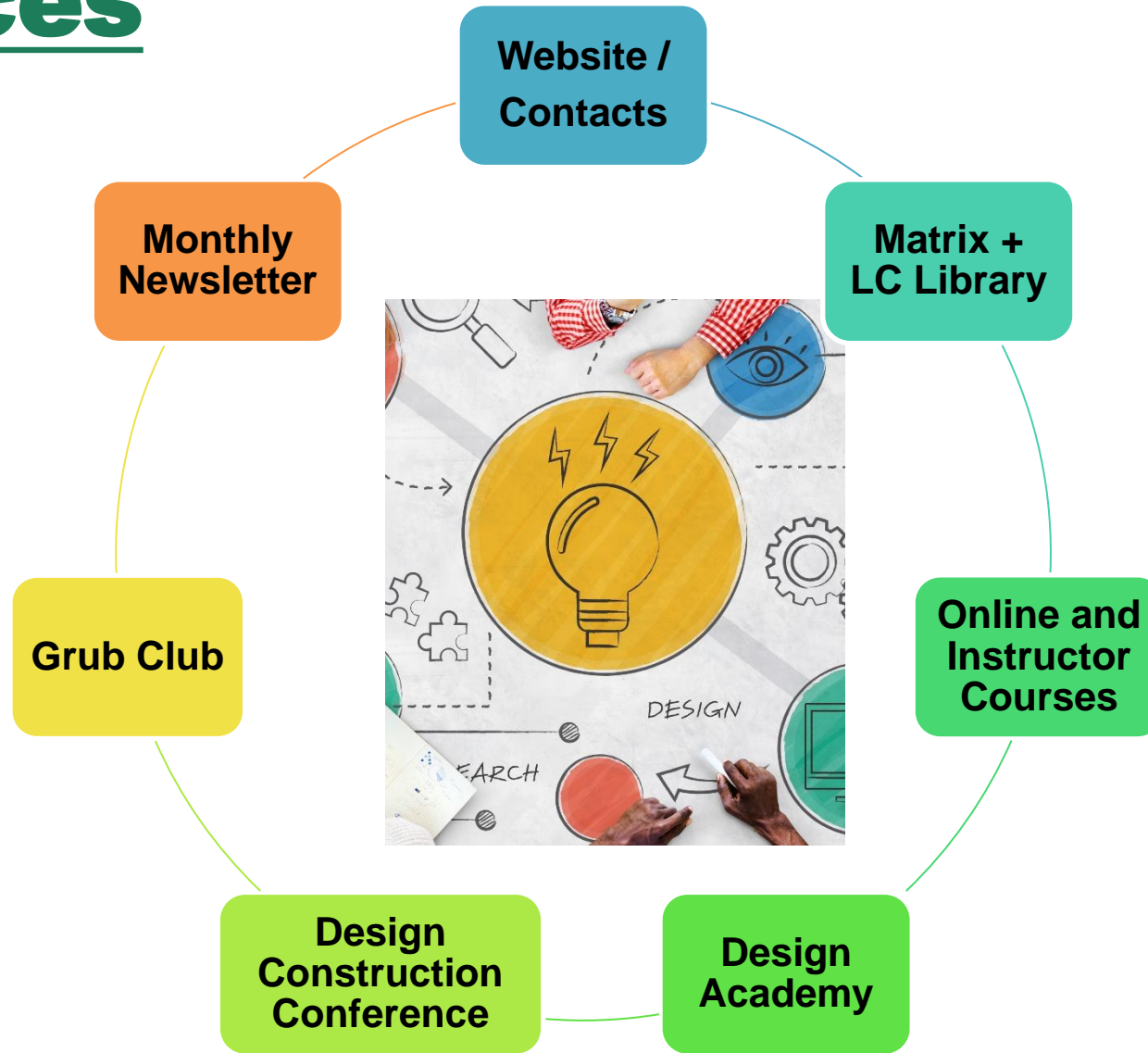
(Manager Mark Gabel)



**Carol
Winfrey**



Resources



Many types of Training Available



- **Website and Contacts**
- **Listserv / Monthly Newsletter**
- **Design Training Matrix**
- **Learning Center Libraries**
- **Design Academy**
- **Grub Club / Monday Morning Minute**
- **Design & Construction Conference**

How to find training, trainers and be informed

1. Design training resources can be found at:

<https://wsdot.wa.gov/engineering-standards/project-management-training/training/design-training>

2. There is a list of specialized trainers [WSDOT-Training-Contacts.pdf](#)

3. There is a “[Design Training News](#)” Listserv to receive emails. The Listserv includes the Training Newsletter, Monday Morning Minute, Grub Club, and all other training announcements. There are 400+ subscribers.

4. There is a great document describing the specialty groups [specialty group descriptions and contact list](#) **Reach out early and often!!!!**

Design Training Courses Matrix

- Training guide for Technicians, Engineers, and Engineering Managers.
- Lists design training available in the Learning Center (LC) and the type of training that it is (links to LC).
- Recommends priorities for the different technician and engineering job classes. Please contact us to tailor your training needs.

Design Courses Training Matrix - Learning Center (LC) Courses and Priority Recommendations

LC Group	Learning Center (LC) Course Name	Hours	Type SS OLT ILT	TT2-3	TE1-2	TE3	Manager	Recommended Attendees
DES	WSDOT ACCESS CONTROL OLT	4	OLT	3	3	2	2	Staff involved with WSDOT owned roadways which all have Limited or Managed Access Control
DES	WSDOT DES: BASIS OF ESTIMATE	1	OLT	3	3	3	3	Staff involved with project estimates
DES	WSDOT DES: COGNITIVE BIAS	1	OLT	3	3	3	3	All staff
DES	WSDOT DES: CONSTRUCTABILITY IN DESIGN	4	OLT	3	2	1	2	Staff involved in planning, scoping, design, and construction

Learning Center “WSDOT Design Training” Library

- This library matches the Design Training Courses Matrix.
- Navigate into Library > Design Library > Search.

The screenshot displays the WSDOT Learning Center interface. At the top, there is a navigation bar with the WSDOT Learning Center logo, user options (SELF, MY TEAM, ADMINISTRATION), and a search bar. The left sidebar contains navigation icons for Home, Timeline, Library (highlighted), Advanced Reporting, All Users, Learning Activities, Training Transcript, and Training Schedule. The main content area is titled 'LIBRARY' and shows the breadcrumb 'Library / WSDOT Design Training'. Below this, there is a search bar with the text 'constructability' and a search icon. The results show '2 of 2 results for "constructability"'. The results are sorted by 'Name: Z To A'. The first result is an 'ONLINE COURSE' titled 'WSDOT DES: Constructability In Design OLT' with a description: 'This 2 hour course is for people involved in design and construction. Provides an understanding of the need to review constructabil...'. The second result is an 'ILT COURSE' titled 'WSDOT DES: Constructability In Design' with a description: 'A course for people involved in design and construction. Provides an understanding of the need to review constructability during d...'. A 'TOPICS' tab is active, showing a list of topics including 'All', 'WA State Enterprise Training', 'WSDOT Accounting & Finance Services', 'WSDOT Design Training' (highlighted), 'WSDOT GIS Training', 'WSDOT Learn Forward', 'WSDOT Learning Center Toolkits', 'WSDOT R.E.S.T. and Resiliency Program', 'WSDOT Records & Information Management', and 'WSDOT Safety'.

Grub Club Recordings and Library

- Grub Club is a yearlong series of 1-hour sessions that offer a diverse array of topics and presenters

The screenshot displays the WSDOT Grub Club Library interface. On the left is a navigation sidebar with icons for Home, Timeline, Library, Advanced Reporting, All Users, Learning Activities, Training Transcript, and Training Schedule. The main content area shows the breadcrumb path: Home / Library / WSDOT Grub Club. Below this is the heading 'LIBRARY' and a description: 'Browse and search for available learning activities. You can use the Topics tab to narrow your results by subject and the Filters tab to apply additional criteria (such as the activity t'. The interface is divided into 'TOPICS' and 'FILTERS' sections. Under 'TOPICS', there is a list of categories: All, > WA State Enterprise Training, > WSDOT Accounting & Finance Services, > WSDOT Continuous Improvement, > WSDOT Culture of Belonging, WSDOT Design Training, WSDOT Environmental, WSDOT GIS Training, WSDOT Grub Club, and > WSDOT Learn Forward. The search results section is titled 'WSDOT GRUB CLUB' and includes a 'Share Topic' link. A search input field contains '*2024', and a message below it states '6 of 6 results for "*2024"'. Two results are shown: 1. 'WSDOT DES: 2024 Grub Club' (ILT COURSE) with a description: 'Grub Club is a yearlong series of 1-hour sessions that offer a diverse array of topics and presenters that conti'. 2. 'WSDOT DES: 2024 GRUB CLUB_1-17-24_NEPA and Real Estate Services' (ONLINE COURSE) with a description: '2024 GRUB CLUB_1-17-24_NEPA and Real Estate Services Coordination'. Both results include a heart icon and a share icon.

Design Academy – Twice a Year



Attendees are selected by Region/Division Managers

Contact if interested in attending:

NWR Sno King	Hung Huynh
NWR Mt Baker Area	Shane Spahr
NCR	Michael Roy
OR	Karen Boone/Joseph Perez
SWR	Caroline Bricheux
SCR	Brent Schilperoort.
ER	Thomas Brasch
HQ	Your division manager
Mega	Dawn Yankauskas
WSF	William Marcouiller

Seats are allocated based on the size of the region.

NWR	NCR	OR	SWR	SCR
12	5	10	6	7
ER	HQ	Mega	WSF	
6	3	3	2	
Total per academy: 54				

Design Academy - Sessions



Pre-Academy	Interactive at Conference
Design Manual overview	Creating a Balanced Design
Right of way	Right of way
Bridge and structures	Bridge and structures
Real Estate Services	Real Estate Services
Geotech	Geotech
Utilities	Utilities
Traffic	Traffic
Environmental	Environmental
Hydraulics	Hydraulics

Design Academy Team Project



- The Design Academy experience includes virtual pre-academy classes, in person interactive sessions, and a team project that will be shared at the end.
- This will allow students to gain base knowledge, to interact with the subjects, and demonstrate learning through discovery and experience.
- Students will be assigned a team and a real WSDOT project location prior to the academy.
- Students will work on this project throughout the academy incorporating knowledge from the classes and sessions.
- There will be a virtual meet and greet before the academy, 8 hours working time during the academy, and an open house for teams to present their project at the end.

Additional Training Coordinated by...



Monday Morning Minute

This is a weekly email from the listserv on new and interesting topics.



Mark Gabel
gabelM@wsdot.wa.gov
360-705-7457

“WSDOT DES: 2024 Grub Club” – Sample topics:

June 7,	Amy Kim & Sarah Thomasson	DES Facility Professional Services Energy; Radio station or Forest Learning Center project
June 21,	Scotty Ireland, Forrest Dill, Mark Steingrebe.	Cost Estimating, practical experience from the OR fish passage bundles
July 5,	Mark Gabel	Design Academy, Project Management and other tips
July 19,	Tony Leingang, Steve Haapala, John Romero	Work zone traffic control
August 2,	Mark Sujka	Risk Management Design Academy

Additional Training Continued...

Statewide Design and Construction Conference (DCC)

- Yearly **Two-day Virtual** Event in January.
- Averages around 600 attendees.
- Regions are free to develop their own conference to supplement.
- Sessions are recorded for those who could not attend or for later review.
- The virtual environment continues as an effective option for presenting modules from HQ statewide.



***“Tell me and I forget. Teach me and I remember.
Involve me and I learn.” ~ Benjamin Franklin***

Design Trainers:

Dan Backman

564-669-4742

dan.backman@wsdot.wa.gov

Carol Winfrey

360-522-0603

carol.winfrey@wsdot.wa.gov

