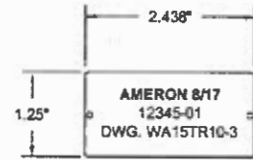
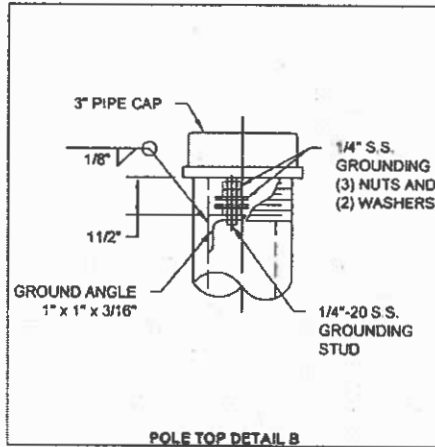


TAG NOTES:

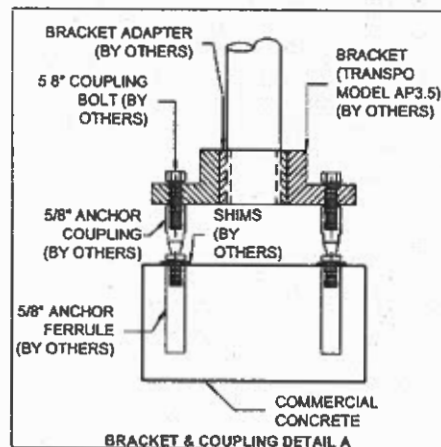
1. TAG MOUNTED W/ (2) DRIVE SCREWS.
2. MOUNT BOTTOM OF TAG 1'-0" FROM BASE OF PPB POLE.
3. TAG INFORMATION:
AMERON MMYYY
PART NO. = XXXXX
DWG. NO. = WA15TR10-2



ID TAG DETAIL



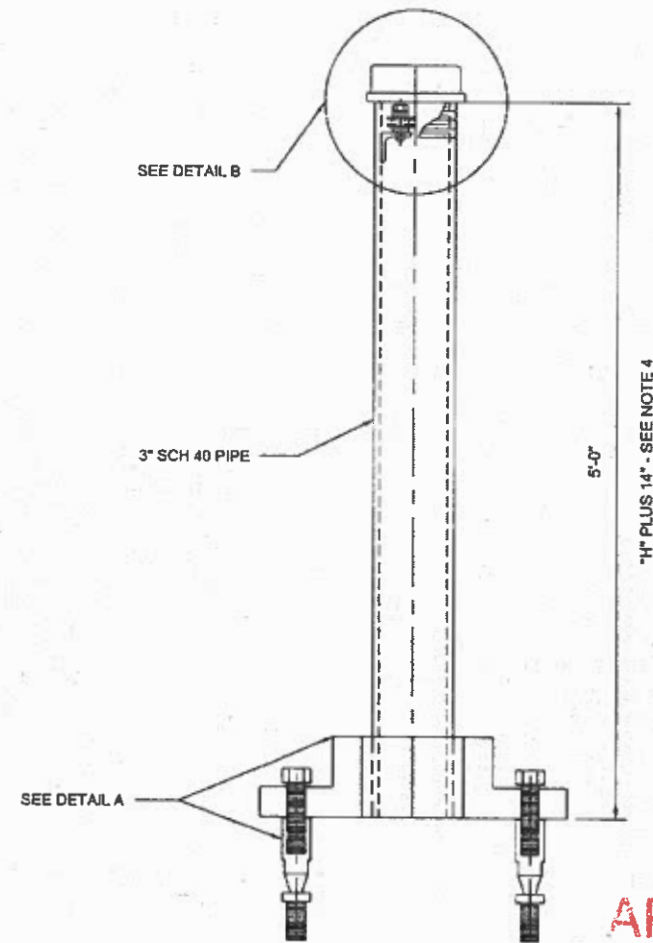
POLE TOP DETAIL B



BRACKET & COUPLING DETAIL A

ORDERING INFORMATION

TYPE PPB-DWG. NO.
POLE TYPE
DRAWING NUMBER



TYPE PPB BREAKAWAY

APPROVED
Manufacturer's Pole Plan
Approved For Listing As A
Pre-Approved Drawing
WSDOT Bridge & Structures Office
By GB Date 2-1-2019

GENERAL NOTES	
MATERIAL SPECIFICATIONS	
*STEEL TO HAVE SILICON CONTENT OF 0.0-0.06 OR 0.15-0.25	
*PIPE	ASTM A-53 GR. "B" OR ASTM A-500 GR. "B"
FINISH COATING	
STRUCTURE	HOT DIP GALVANIZE PER ASTM A-123.
HARDWARE	HOT DIP GALVANIZE PER ASTM F2329.
DESIGN CRITERIA	
STRUCTURE AND HARDWARE	IN ACCORDANCE WITH TO 2015 AASHTO LRFD STANDARD SPECIFICATIONS FOR STRUCTURAL SUPPORTS FOR HIGHWAY SIGNS, LUMINAIRES, AND TRAFFIC SUPPORTS

NOTES:

1. REFERENCE WASHINGTON D.O.T. STANDARD PLAN J-20.15-03 PEDESTRIAN PUSHBUTTON (PPB) STANDARD
2. AASHTO 2015 LRFD DESIGN PARAMETERS
 - 2.a. LOCATION: STATE OF WASHINGTON
 - 2.b. WIND VELOCITY: 115 MPH
 - 2.c. MEAN RECURRENCE INTERVAL: 1700
 - 2.d. NO FATIGUE
3. SS STUD, NUTS & WASHERS ARE FIELD INSTALLED
4. WHEN ADDITIONAL CROSSING TIME IS NEEDED, INSTALL PLAQUE (R10-32P) "PUSH BUTTON FOR 2 SECONDS FOR EXTRA CROSSING TIME" ABOVE THE ACCESSIBLE PEDESTRIAN SIGNAL ASSEMBLY. ADD 14" TO POST TO ACCOMMODATE PLAQUE AND LEAVE A 2" SPACE BETWEEN SIGNS. CUSTOMER MUST SPECIFY WHEN REQUIRED.
5. AMERON RESERVES THE RIGHT TO INSTALL TOOLING LUGS OR HOLES TO FACILITATE IN THE GALVANIZING PROCESS. THESE LUGS/HOLES WILL NOT IMPEDE WITH THE FIT, FORM, OR FUNCTION OF THE FINISHED PRODUCT AND ARE TO BE USED SOLELY BY THE MANUFACTURE.

WELDING INSPECTION:

1. WELDING INSPECTION SHALL BE IN ACCORDANCE WITH THE REQUIREMENTS OF WASHINGTON STATE DEPARTMENT STANDARD SPECIFICATION SECTION 6-03.3(25) AND 2015 AASHTO, INCLUDING LATEST INTERIMS, WELD INSPECTION SECTION 14.5.3

WELDING:

1. WELDING OF STRUCTURES SHALL BE IN ACCORDANCE WITH THE LATEST EDITION OF THE AWS STRUCTURAL WELDING CODE D1.1-STEEL.



B	1/29/19	REV. ANGLE THICKNESS IN POLE TOP DETAIL B	GM	MPM
A	8/23/18	REVISED PER WASHINGTON DOT COMMENT	ST	GM
REV. DATE		DESCRIPTION	BY	APPR
AMERON POLE PRODUCTS DIVISION STATE OF WASHINGTON AASHTO 2015 - LRFD TYPE PPB PED POLE W/ BREAKAWAY CPLG				
DRAWN	RD2	DATE	8/23/18	APPR
DRAWING NUMBER	WA15TR10-3	REVISION	SHEET	SCALE
	B		1 OF 1	INTS