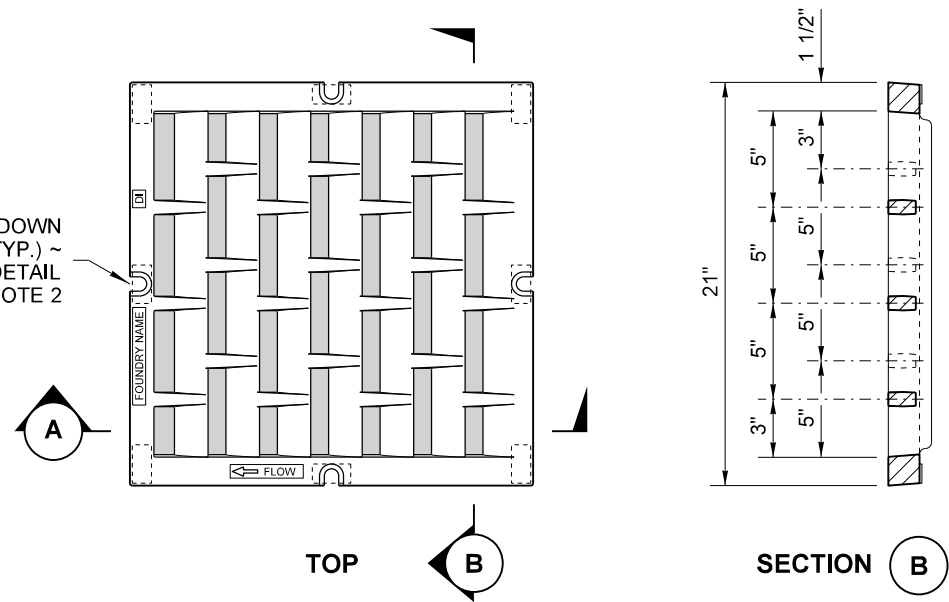
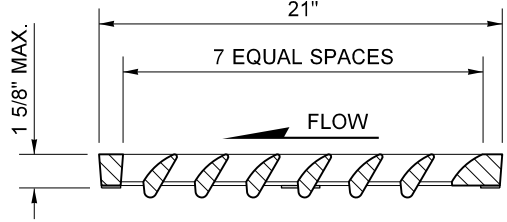


BOLT-DOWN SLOT (TYP.) ~ SEE DETAIL & NOTE 2



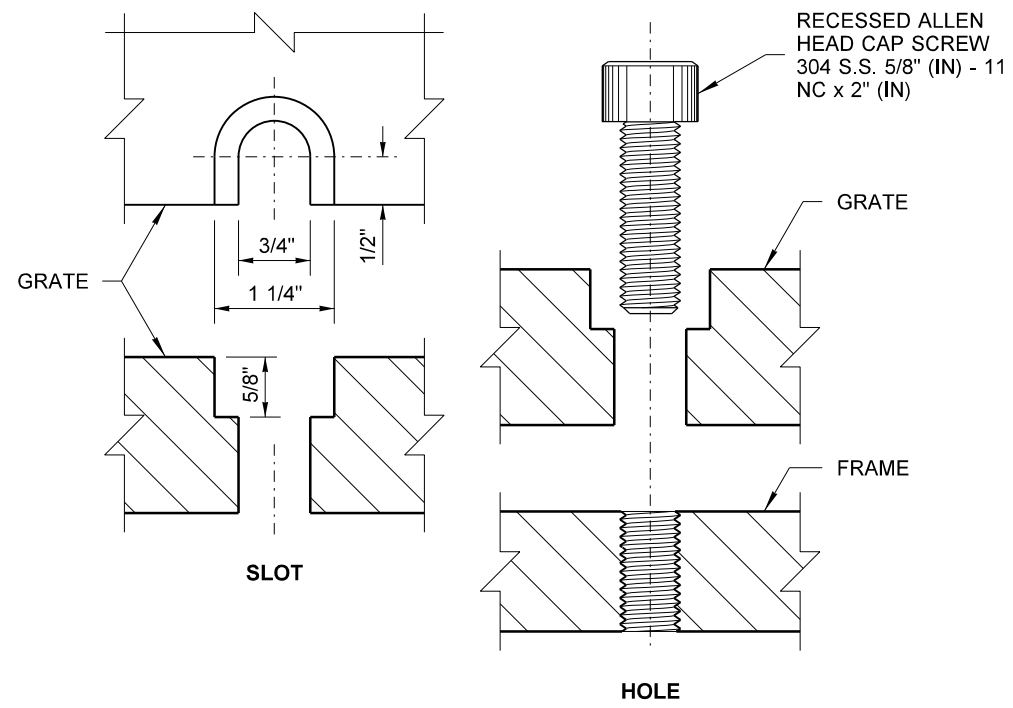
TOP

SECTION B



SECTION A

GRATE

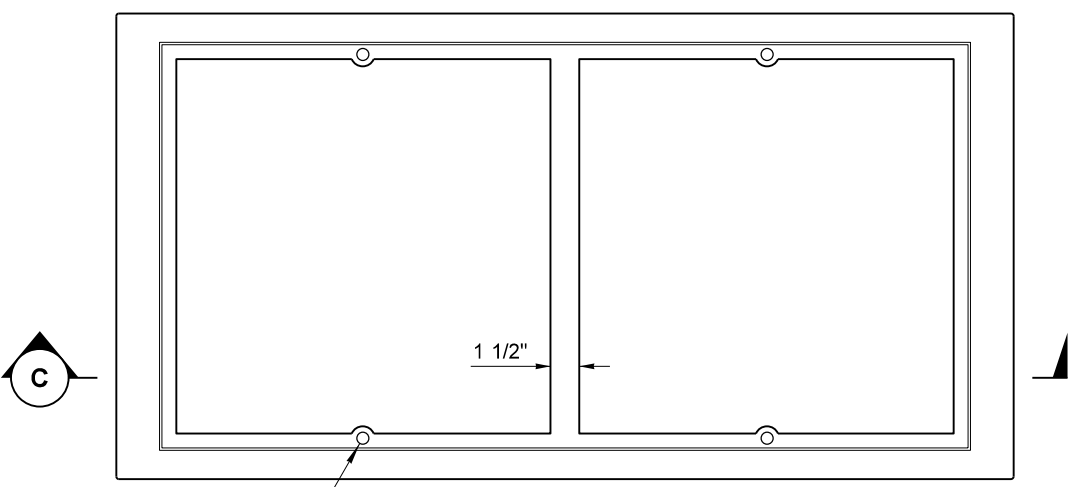


BOLT-DOWN DETAILS
SEE NOTE 2

NOTES

1. The Contract may specify a rotated inlet installation. Orient the grates in the frame so they intercept flow.
2. Bolt-down capability is required on all frames, grates, and covers, unless specified otherwise in the Contract. Provide 2 holes in the frame that are vertically aligned with the grate or cover slots. The frame shall accept the 304 Stainless Steel (S.S.) 5/8" (in) - 11 NC x 2" (in) Allen head cap screw by being tapped, or other approved mechanism. Location of bolt-down holes varies by manufacturer.
3. Refer to **Standard Specification Section 9-05-15(2)** for additional requirements.
4. Frame and Grates shall be Ductile Iron.

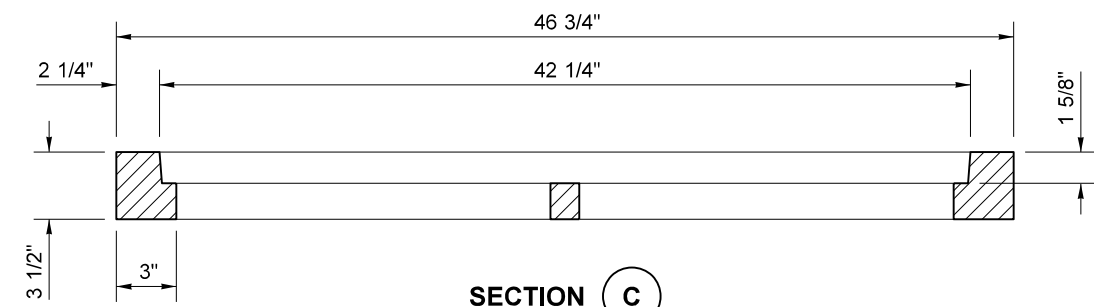
DRAWN BY: LISA CYFORD



TOP

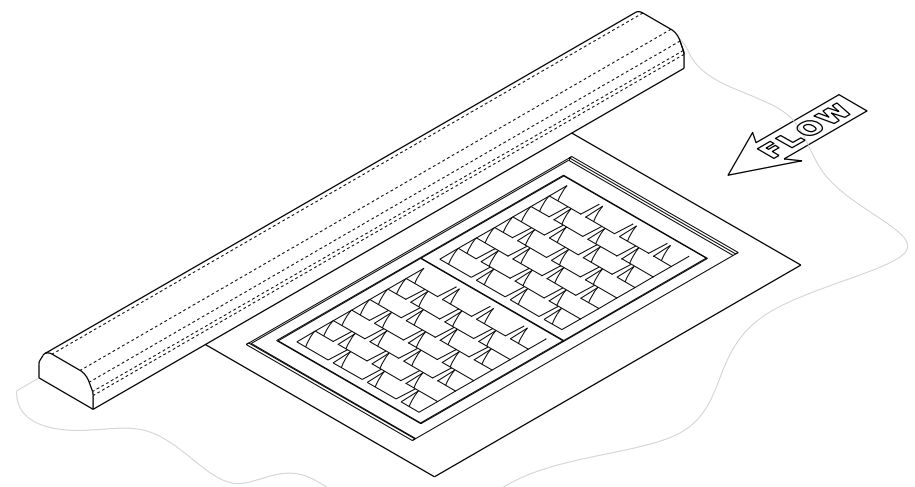
SECTION D

BOLT-DOWN HOLE (TYP.) ~ 5/8" (IN) - 11 NC, SEE DETAIL & NOTE 2

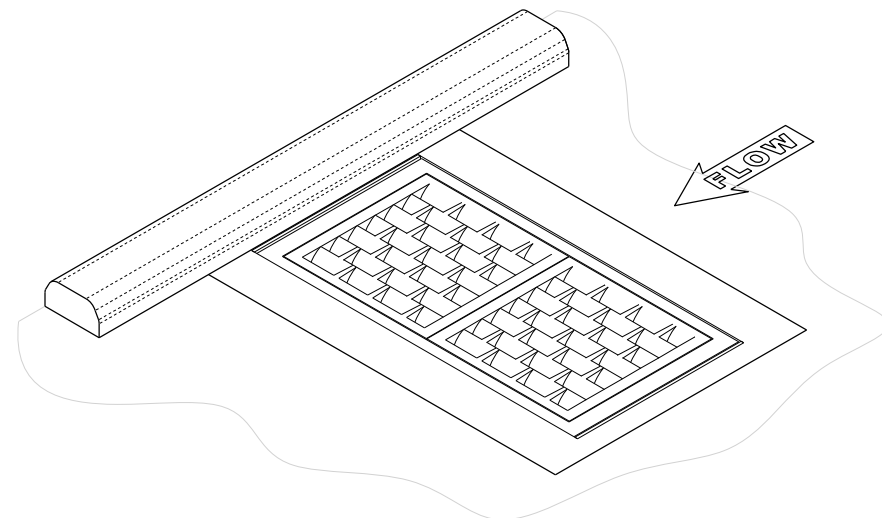


SECTION C

FRAME



NORMAL INSTALLATION



ROTATED INSTALLATION

ISOMETRIC VIEWS
SEE NOTE 1



**FRAME AND DUAL VANED GRATES FOR GRATE INLET
STANDARD PLAN B-40.40-02**

SHEET 1 OF 1 SHEET

APPROVED FOR PUBLICATION

STATE DESIGN ENGINEER
Washington State Department of Transportation