



Washington State
Department of Transportation



50

Gray Notebook Lite

PERFORMANCE HIGHLIGHTS

3,129

WSDOT-owned **bridges** are in fair or better condition

\$ 273.6 M

bridge preservation planned **funds** for 2013-2015 biennium

\$ 1.07 B

bridge preservation funds **needed** in the next 10 years

1954

last year Washington's traffic fatality rate was as **low** as it was in **2012**

10

of the nation's top **vanpool** programs operate here

73.3%

Washington **commuters** drive alone to work

2,000

hours of estimated staff time **saved** by using programmatic **permits**

95 OF **131**

construction **contracts** awarded **below** engineer's estimates

\$ 66.6 M

less needed to complete 120 WSDOT **contracts** than estimated

3 times

more signs produced by WSDOT due to **Lean** processes

↓ 68%

reduction in the collision record data entry backlog at WSDOT achieved through the **Lean** process

50

issues of the **Gray Notebook** published in 12.5 years

Quarter ending June 30, 2013

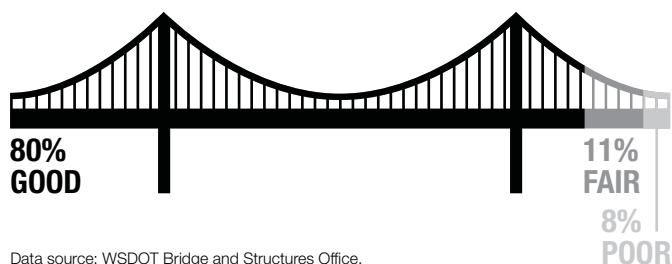
Lynn Peterson,
Secretary of Transportation



The Gray Notebook Lite provides selected highlights from WSDOT's quarterly performance report on transportation systems, programs and department management. To see the full Gray Notebook report, scan the QR code above or go to <http://wsdot.wa.gov/publications/fulltext/graynotebook/Jun30.pdf>

Majority of bridge deck area in good condition in 2013

Fiscal year 2013; State-owned bridge deck area by condition



Data source: WSDOT Bridge and Structures Office.

Note: Percents may not equal 100 percent due to rounding.

Bridge conditions improve slightly

- The amount of WSDOT-owned bridge deck area in poor condition improved from 4.1 million to 3.9 million square feet since fiscal year (FY) 2012
- In the 2013-2015 biennium, preservation planned spending for WSDOT-owned bridges is more than \$273 million; and preservation needs will exceed \$1 billion in the next decade

In fiscal year (FY) 2013, 4 percent of WSDOT-owned bridges and 8 percent of deck area were in poor condition, indicating some larger bridges were rated poor. These

bridges add up to 3.9 million square feet of deck area — the size of 66 football fields. This is an improvement from 4.1 million square feet in poor condition in FY2012. Bridges rated as poor are still safe for travel. They have some deficiencies and are in need of future repair or replacement.

The 2013-2015 biennium planned funding for bridge preservation totals \$273.6 million. Current projections of state and federal bridge preservation funding for the next 10 years show that WSDOT is expected to meet 44 percent of the projected needs in the next 10 years, which totals \$1.07 billion.

Condition of WSDOT bridges by deck area and number

Fiscal year 2013; Square feet in millions

Condition	By deck area		By number of bridges	
	Square feet	Percent	Number	Percent
Fair or better	42.5	92%	3,129	96%
Good	37.2	80%	2,844	87%
Fair	5.3	11%	285	9%
Poor	3.9	8%	138	4%

Data source: WSDOT Bridge and Structures Office.

Notes: Percents may not add to 100 due to rounding for publication. In total, 46.4 of 46.6 million square feet of bridge deck area on 3,267 of 3,794 state-owned bridges were rated for this performance measure in FY2013. See p. 14 for an overview of the bridge condition rating system.

Bridge preservation funding planned for 2013-2015 biennium and projected 10-year needs

FY2013 - FY2023; Dollars in millions

Preservation type	Major bridge repairs /movable bridges	Bridge replacement /rehabilitation	Painting	Concrete overlay	Seismic	Scour	TOTAL
Planned 2013-2015 biennium	20.4	114.7	79.8	8.8	49.2	0.7	\$273.6
Projected 10-year needs	79.6	239.8	486.2	147.2	102.8	14.3	\$1,070

Data source: WSDOT Bridge and Structures Office.

Highway System Safety: Target Zero

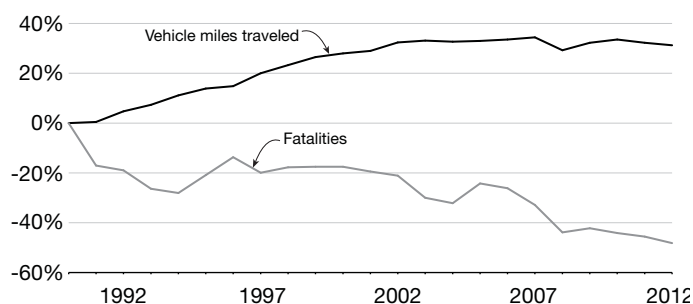
Traffic fatalities decreasing in state

- There were 437 traffic fatalities in Washington in 2012, the lowest number since 1954, when there were 413
- Washington's traffic fatality rate per 100 million vehicle miles traveled in 2012 was the lowest in state history

Washington is making good progress toward the statewide goal of no traffic fatalities or serious injuries by 2030, *Target Zero*. Fatalities were down 49 percent for Washington's state highways, from 417 in 1990 to 212 in 2012, even though state highway vehicle miles traveled increased 31 percent.

Washington fatalities and vehicle miles traveled

Washington state highways; Percent change from 1990 to 2012



Data source: Fatal Accident Reporting System (FARS), WSDOT Statewide Travel and Collision Data Office.

Washington supports multiple travel options

- Ten of the nation's top 50 vanpool programs operate in Washington state
- About 130,000 commuters walked or bicycled to work in Washington in 2011

In 2011, about 827,000 of Washington's workers chose some other mode of transportation to work rather than driving alone. The rest, some 2.2 million, drove alone to work in 2011.



Washington leads the nation in vanpooling. This commuter combines bicycling with vanpooling.

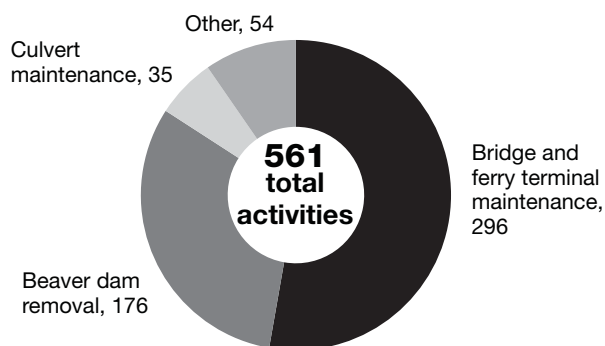
Permitting process saves time and money

- WSDOT saved an estimated 2,000 hours of staff time by using programmatic permits

The majority of activities under the Fish and Wildlife programmatic permits are for bridge and ferry terminal maintenance (296, or 53 percent of 561).

Nine Fish and Wildlife programmatic permits streamline 561 WSDOT activities

Calendar year 2012



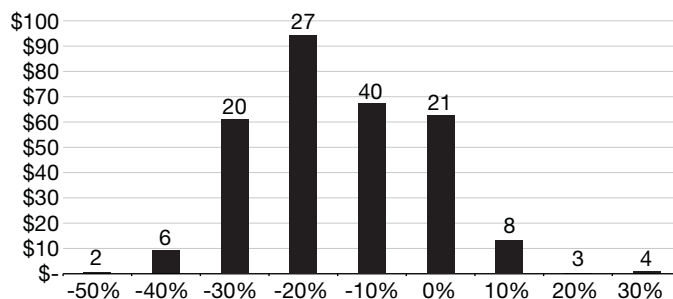
Data source: WSDOT Environmental Services Office.

Engineer's estimates improve

- Final costs for the 120 completed WSDOT contracts were \$66.6 million less than estimated
- Of 131 WSDOT-awarded contracts from July 2012 through June 2013, 95 had bids that were less than the engineer's estimates

Ninety-five bids are less than WSDOT's estimate

FY2013; Dollars in millions; Total awarded contract amounts by percent above or below engineer's estimate



Data source: WSDOT Construction Office.

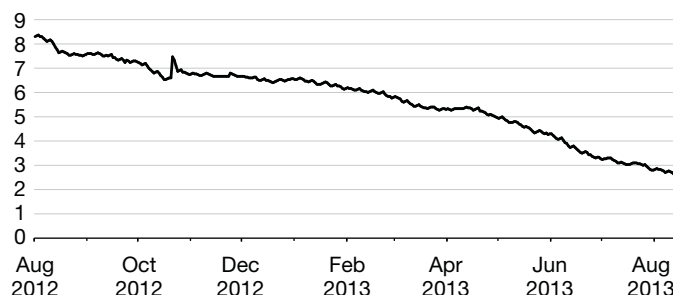
WSDOT's Lean efforts bring efficiencies

- WSDOT has initiated more than a dozen Lean projects in the past year to improve processes and create efficiencies
- The sign fabrication project reduced sign prices 25 percent per square foot, while more than tripling the number of signs manufactured

The backlog of collision records at WSDOT improved 68 percent in one year (August 2012 through August 2013), and continues to decrease. This progress was achieved with two fewer staff members.

WSDOT's backlog of collision records drops 68 percent

August 2012 - August 2013; Backlog in number of months between when record is received and when it is available to customers



Data source: Statewide Travel and Collision Data Office (STCDO).

Note: The Lean project was launched in June 2012, when the backlog was nearly nine months.

WSDOT's Performance Dashboard

Policy goal/Performance measure	Previous reporting period	Current reporting period	Goal	Goal met	Five Year Trend (unless noted)	Desired trend
Safety						
Rate of traffic fatalities per 100 million vehicle miles traveled (VMT) statewide (Annual measure: calendar years 2011 & 2012)	0.80	0.77	1.00	✓		↓
Rate of recordable incidents for every 100 WSDOT workers¹ (Cumulative year to date 2012 & 2013 - trend shows 2 years)	4.3	4.6	5.0	✓		↓
Preservation						
Percentage of state highway pavement in fair or better condition (Annual measure: calendar years 2010 & 2011)	92.0%	90.5%	90.0%	✓		↑
Percentage of state bridges in fair or better condition (Annual measure: fiscal years 2012 & 2013)	95.0%	96.0%	97.0%	—		↑
Mobility (Congestion Relief)						
Highways: annual (weekday) vehicle hours of delay statewide at maximum throughput speeds ² (Annual measure: calendar years 2010 & 2012)	31.7 million	30.9 million	N/A	N/A		↓
Highways: Average clearance times for major (90+ minute) incidents on nine key western Washington corridors (Calendar quarterly measure: Q1 2013 is latest available - trend shows last 5 quarters)	143 minutes	N/A	155 minutes	N/A		↓
Ferries: Percentage of trips departing on time³ (Fiscal quarterly measure: year to year: Q4 FY2012 & Q4 FY2013)	95.5%	95.3%	95%	✓		↑
Rail: Percentage of Amtrak Cascades trips arriving on time⁴ (Calendar quarterly measure: year to year Q2 2012 & Q2 2013)	72.3%	80.2%	80%	✓		↑
Environment						
Number of WSDOT stormwater management facilities constructed (Annual measure: fiscal years 2011 & 2012)	243	146	N/A	N/A		↑
Cumulative number of WSDOT fish passage barrier improvements constructed since 1990 (Annual measure: calendar years 2011 & 2012)	257	269	N/A	N/A		↑
Stewardship						
Cumulative number of Nickel and TPA projects completed, and percentage on time ⁵ (Calendar quarterly measure: Q1 2013 & Q2 2013 - trend shows last 5 quarters)	344/ 88%	344/ 88%	90% on time	—		↑
Cumulative number of Nickel and TPA projects completed and percentage on budget ⁶ (Calendar quarterly measure: Q1 2013 & Q2 2013 - trend shows last 5 quarters)	344/ 91%	344/ 91%	90% on budget	✓		↑
Variance of total project costs compared to budget expectations ⁵ (Calendar quarterly measure: Q1 2013 & Q2 2013 - trend shows last 5 quarters)	under budget by 1.4%	under budget by 1.4%	on budget	✓		N/A

Notes: N/A means not available: new reporting cycle data not available or goal has not been set. Dash (—) means goal was not met in the reporting period.

1 Recordable incident rate reported as the number of incidents for every 100 full-time employees. WSDOT began reporting the recordable incident rate in January 2012, so the trend shows two years of data.

2 Compares actual travel time to travel time associated with "maximum throughput" speeds, where the greatest number of vehicles occupy the highway system at the same time (defined as 70 to 85 percent of the posted speeds).

3 "On-time" departures for Washington State Ferries includes any trip recorded by the automated tracking system as leaving the terminal within 10 minutes of the scheduled time.

4 "On-time" arrivals for Amtrak Cascades are any trips that arrive at their destination within 10 minutes of the scheduled time. See page 24.

5 Budget and schedule expectations are defined in the last approved State Transportation Budget. See page 49 for more information on capital projects in the current 2012 Legislative Transportation Budget.