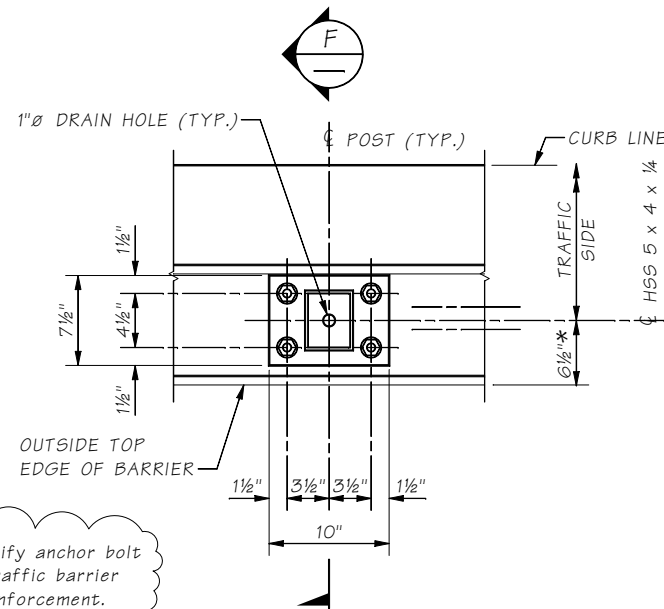
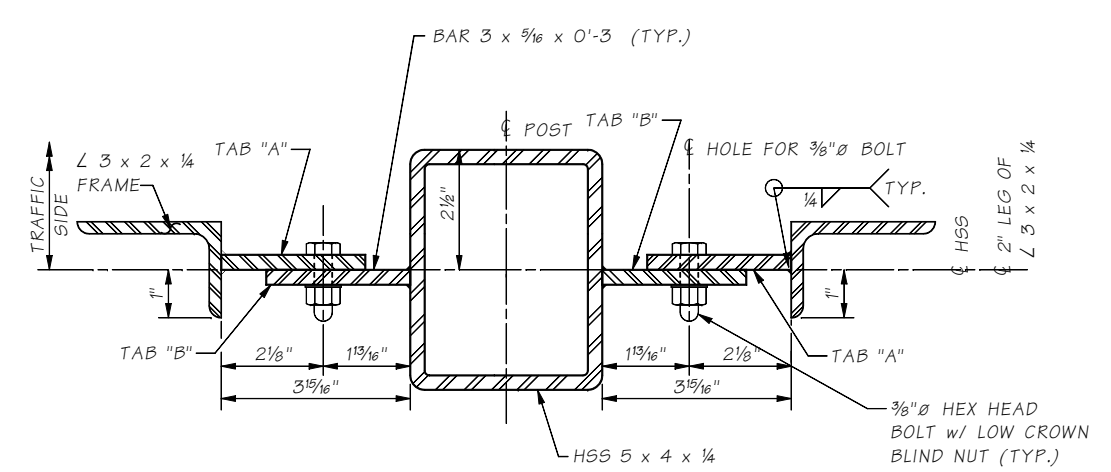


SECTION A



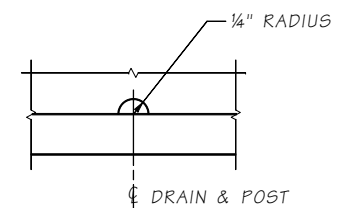
SECTION B

* Designer to verify anchor bolt clearance to traffic barrier longitudinal reinforcement.

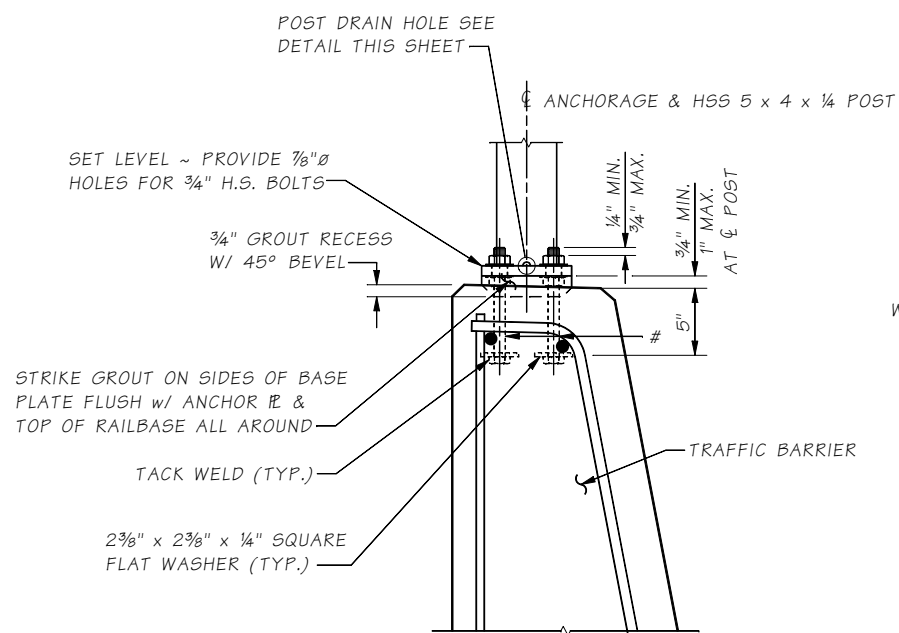


SECTION C

DETAIL SHOWS BOLTS IN THE CENTER OF THE SLOTS WIRE FABRIC NOT SHOWN FOR CLARITY.

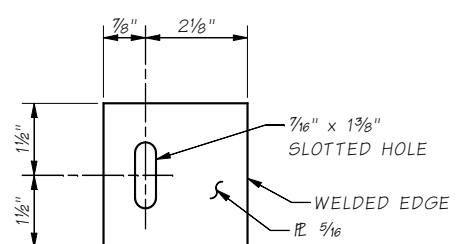


POST DRAIN DETAIL



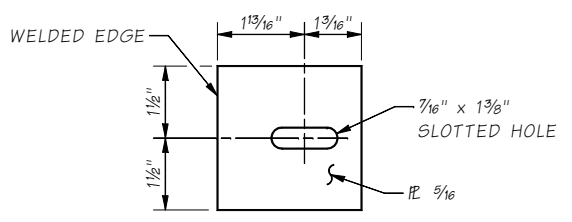
SECTION F

BARRIER REINFORCING MAY BE ADJUSTED TO ACCOMMODATE ANCHOR BOLTS



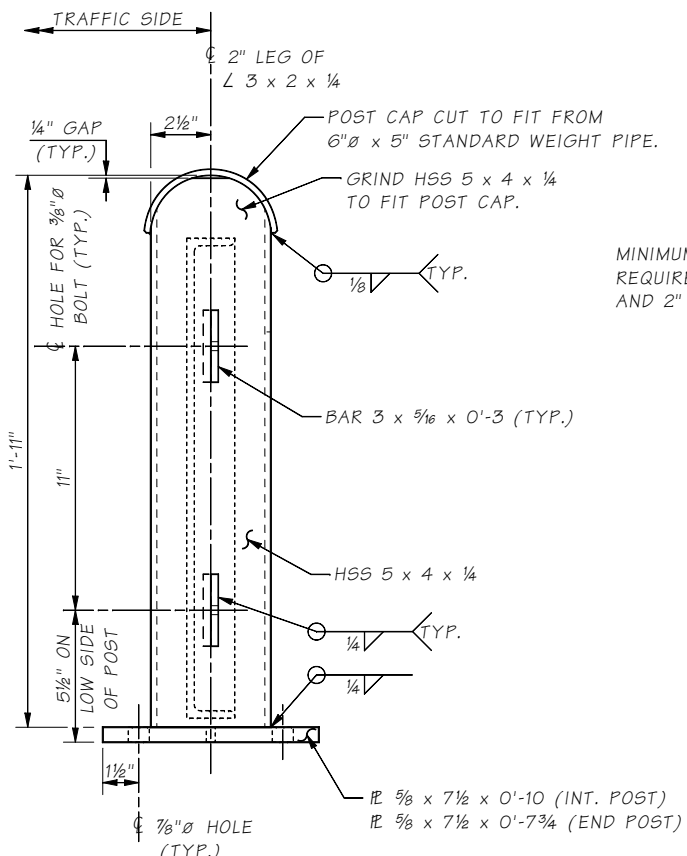
TAB "A" DETAIL

PLACE TAB "A" ON FENCE PANEL



TAB "B" DETAIL

PLACE TAB "B" ON POST

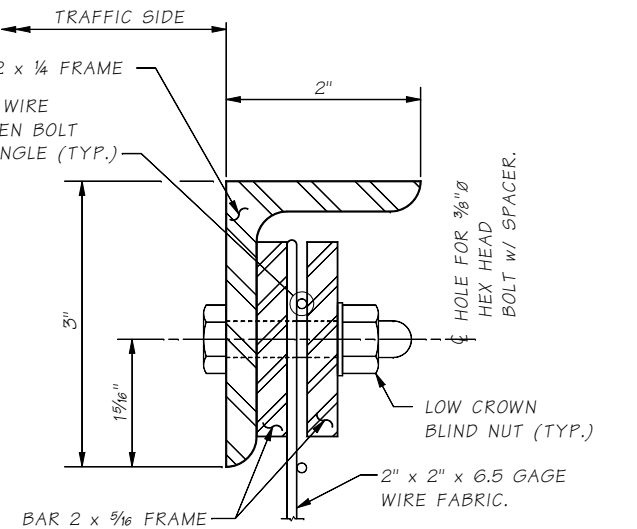


SECTION D

TABS AND FENCE PANEL SHOWN ON LOW SIDE OF POST

NOTE:

HEX HEAD BOLTS THREADS SHALL BE FULLY COATED WITH THREAD LOCKING AGENT JUST PRIOR TO CONNECTING THE RAILING PANELS TO THE POSTS. THE HEX HEAD BOLTS SHALL BE TIGHTENED IN ACCORDANCE WITH SECTION 6-06.3(2) AS SUPPLEMENTED IN THE SPECIAL PROVISIONS.



SECTION E

- # THE ANCHORAGE SHALL BE EITHER:
- 1) 3/4" Ø HEX HEAD ANCHOR BOLTS, 1 HEX NUT, 1 REGULAR JAM NUT, 2 REGULAR WASHERS & 1 SQUARE FLAT WASHER (2 3/8" x 2 3/8" x 1/4") REQUIRED PER BOLT.
 - 2) 3/4" Ø RESIN BONDED ANCHORS. USE MANUFACTURER'S RECOMMENDED EMBEDMENT DEPTH FOR RESIN BONDED ANCHORS. RESIN BONDED ANCHORS REQUIRE JAMB NUT AND AN ADDITIONAL WASHER.

Last Revised on: 04/29/16

1 SHEET

10.5-A5-3

Bridge Design Engr.	M:\STANDARDS\BP Rails\BRIDGE RAILING SNOW FENCE 2.MAN				REGION NO.	STATE	FED. AID PROJ. NO.	SHEET NO.	TOTAL SHEETS
Supervisor	Sup				10	WASH.			
Designed By	Designer	Date			JOB NUMBER				
Checked By	Checker	Date							
Detailed By	Detailer	Date							
Bridge Projects Engr.									
Prelim. Plan By									
Architect/Specialist		DATE	REVISION	BY	APP'D				

BRIDGE AND STRUCTURES OFFICE

Washington State Department of Transportation

STANDARD RAILINGS

BRIDGE RAILING TYPE SNOW FENCE

DETAILS 2 OF 2

BRIDGE SHEET NO.

SHEET

OF

SHEETS