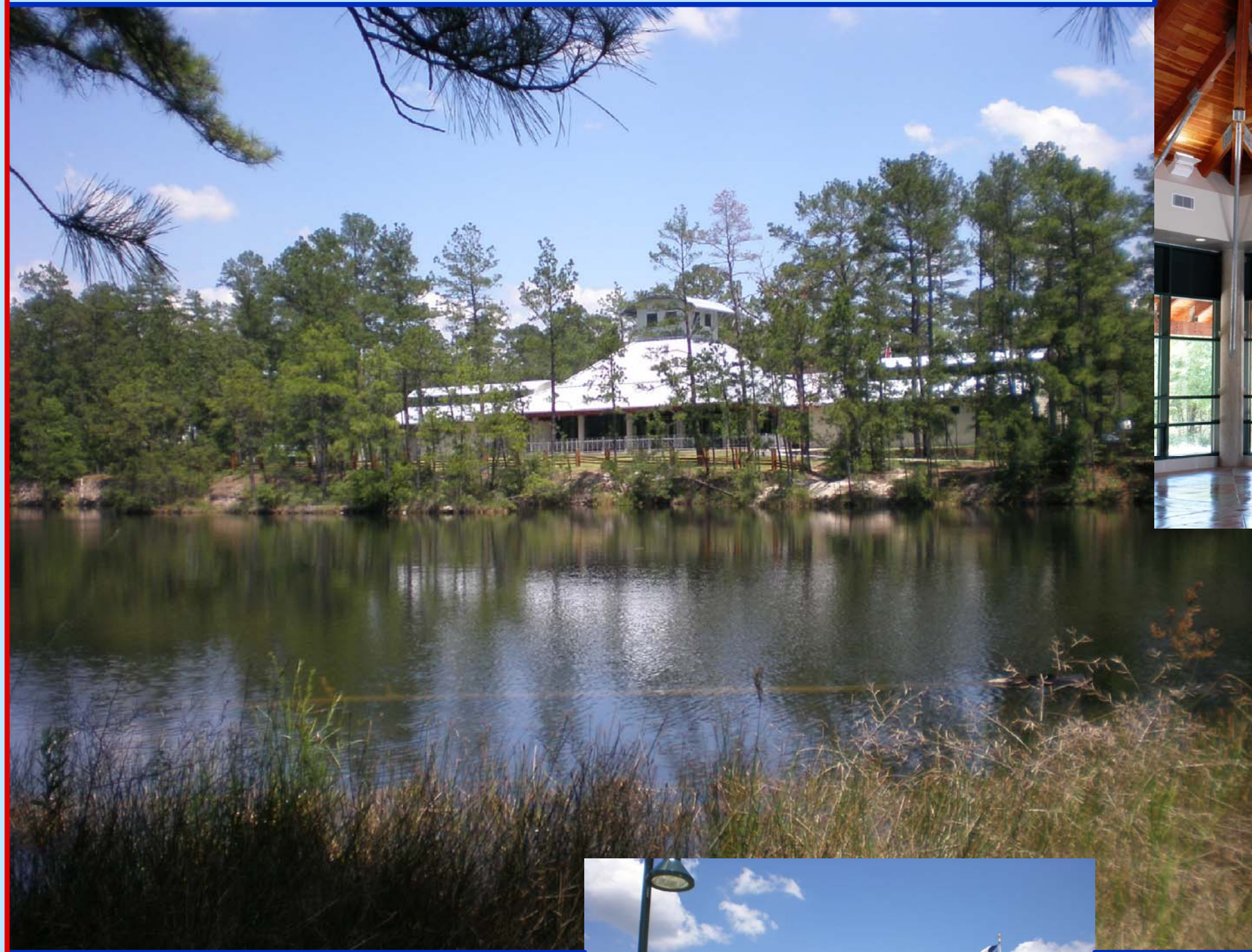


TxDOT Safety Rest Areas

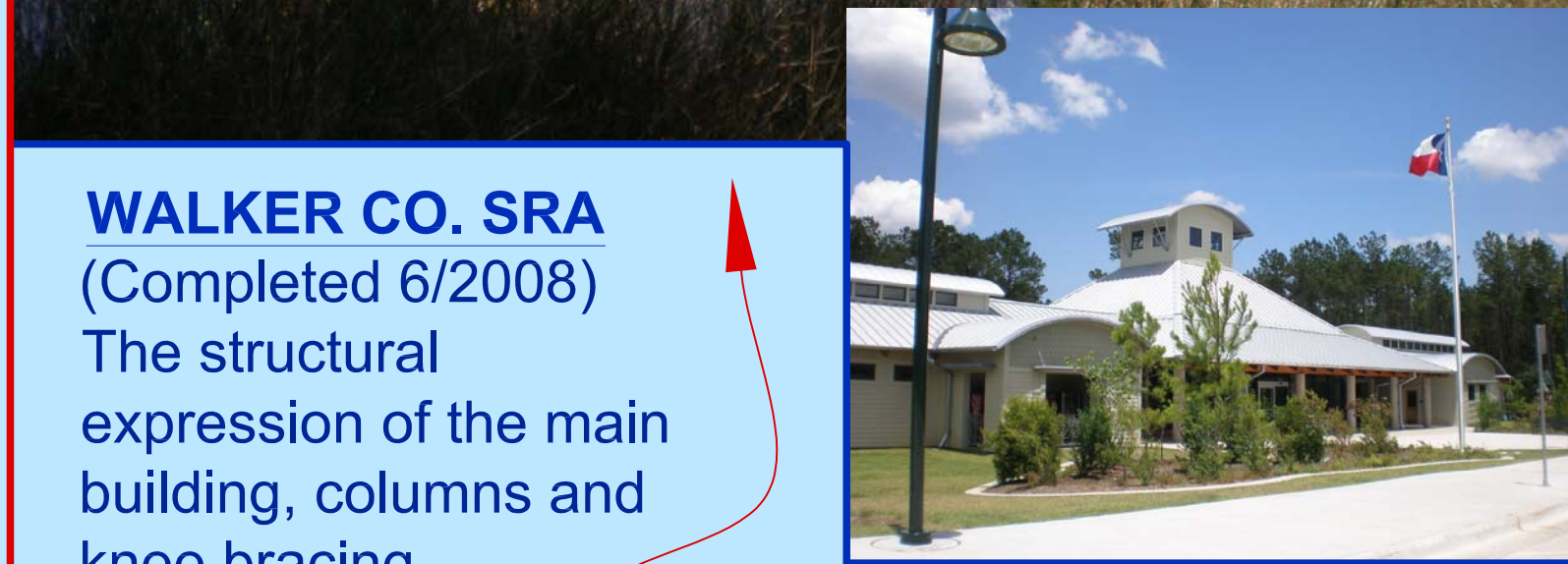
★ PROJECT SNAPSHOT

TxDOT's context based design approach gives each Safety Rest Area facility a unique identity with safety, comfort, convenience, and informative features that are attractive and inviting to travelers.

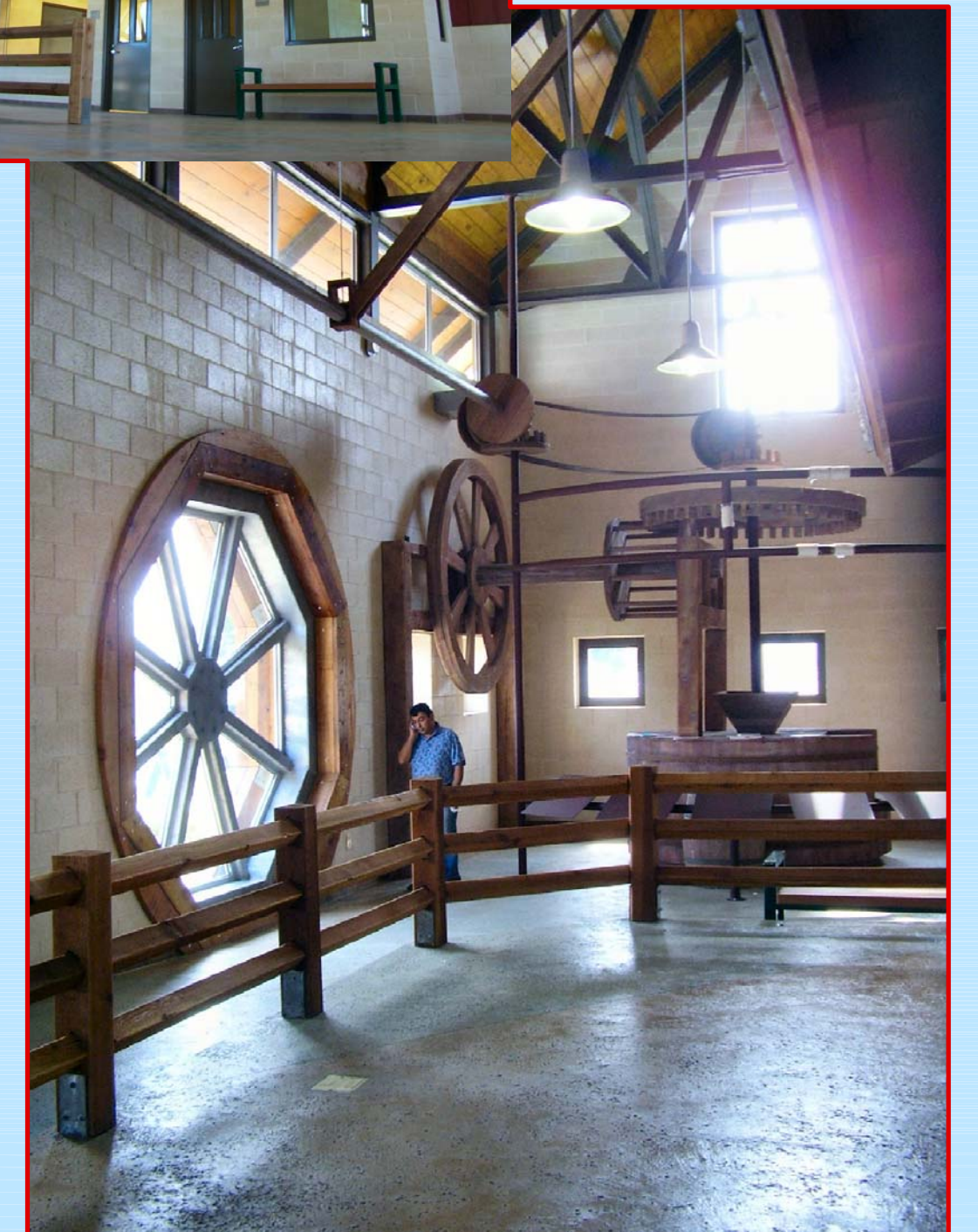
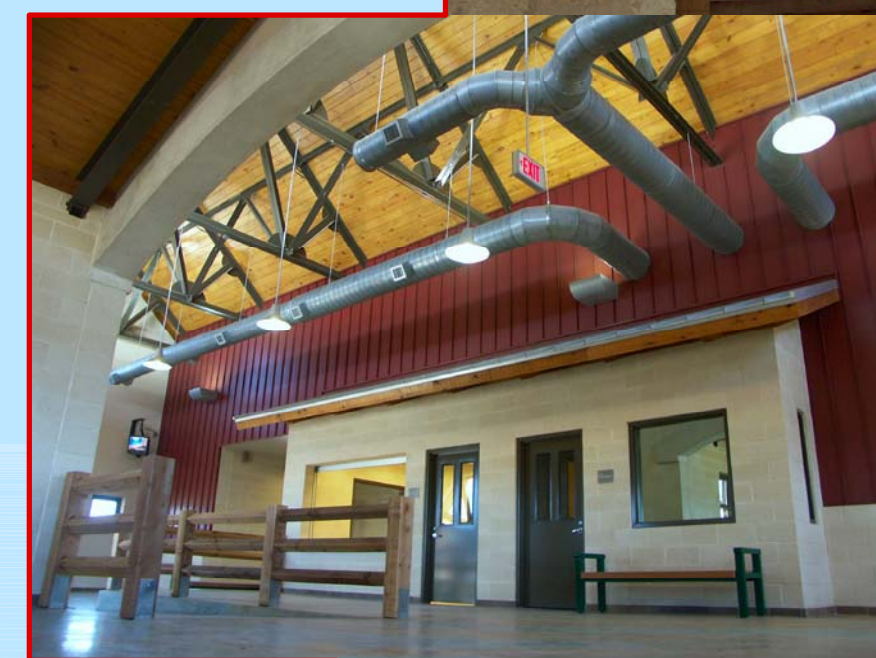
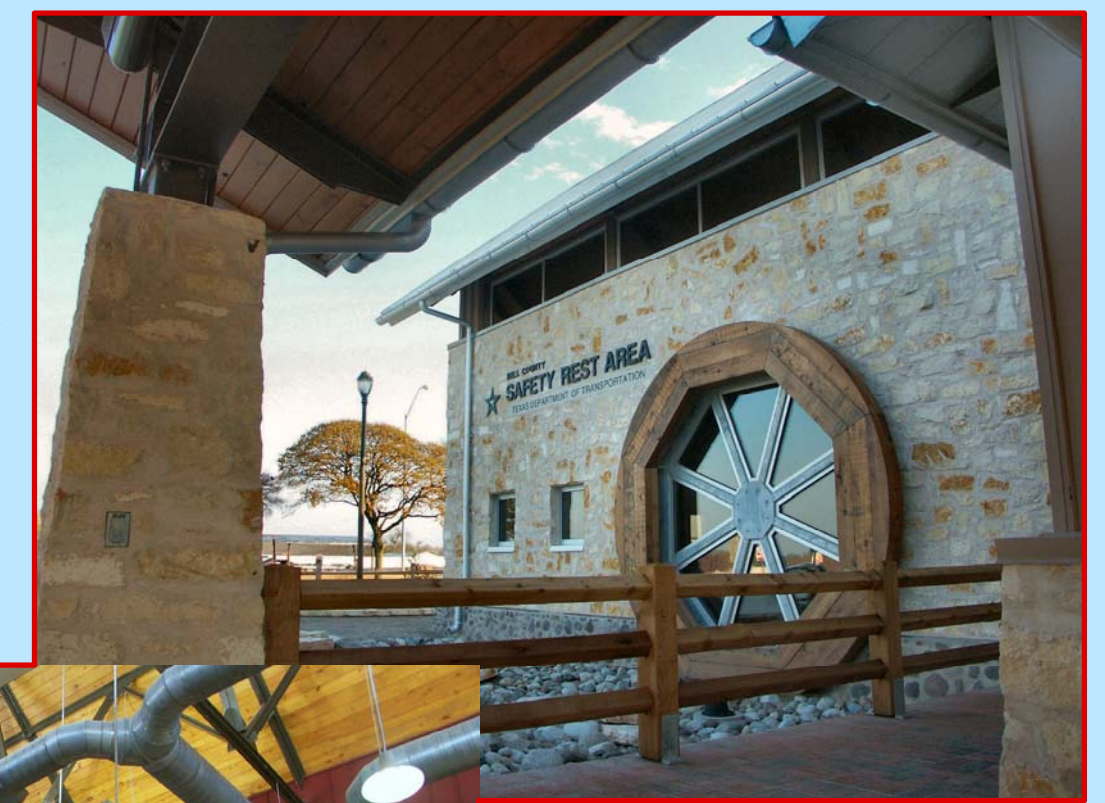
Below are some of the latest Safety Rest Area projects that have just been completed, are under design development, or just in conceptual stages. All conceptual designs have been developed by TxDOT's in-house team of architects and designers dedicated to the Safety Rest Area program. Many of these designs will proceed to full in-house production of construction documents in collaboration with other designers, engineers and specialists within TxDOT.



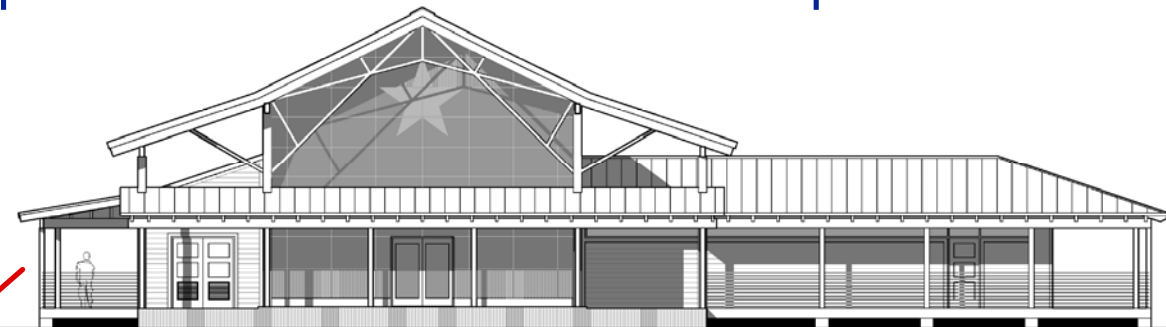
BELL CO. SRA
(Completed 9/2008)
The design is inspired by water mill structures that were once dotted along the nearby Salado Creek



WALKER CO. SRA
(Completed 6/2008)
The structural expression of the main building, columns and knee bracing supporting roofs, is based on the hierarchy of a tree.



CHAMBERS CO. SRA (Conceptual)
Inspired by vernacular Gulf Coast architecture, with elevated wooden clapboard structures, and wide covered porches and trellises to protect from the rain and to help catch breezes



LA SALLE CO. SRA (Conceptual)
Inspired by early Texas' "Dog Trot" (Opening in the middle of building to take advantage of air circulation)



NAVARRO CO. SRA (Under Development)
Gabled structures with sloped roofs and "lean-to's" with deep porches reminiscent of the farming and ranching buildings of the Blackland prairie



HILL CO. SRA (Conceptual)
Inspired by metal structures of the farming community where it is located



CULBERSON CO. SRA (Conceptual)
Inspired by mountain ranges of West Texas

