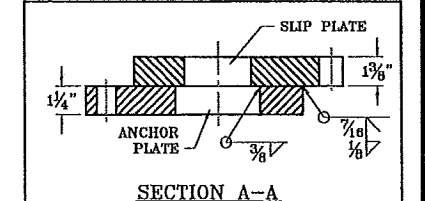
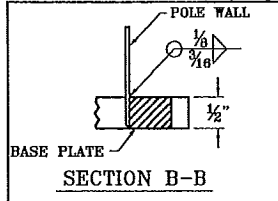
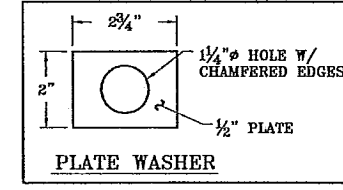


**APPROVED**  
 Manufacturer's Pole Plan  
 Approved For Listing As A  
 Pre-Approved Drawing  
 WSDOT Bridge & Structures Office  
 By GB Date 8/6/2008



EXPIRES: 4/20/10

POLE SCHEDULE	
POLE NUMBER	POLE DESIGNATION

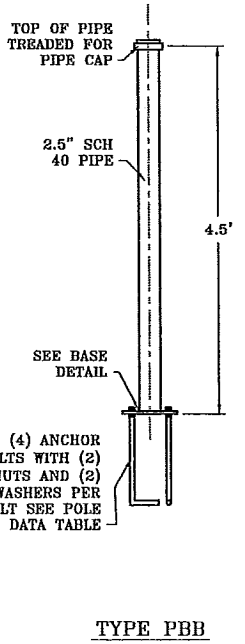
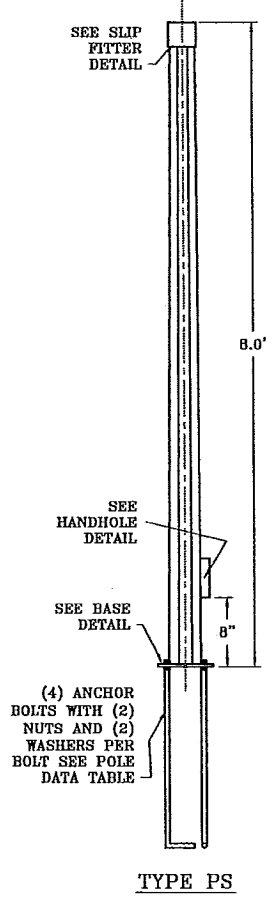
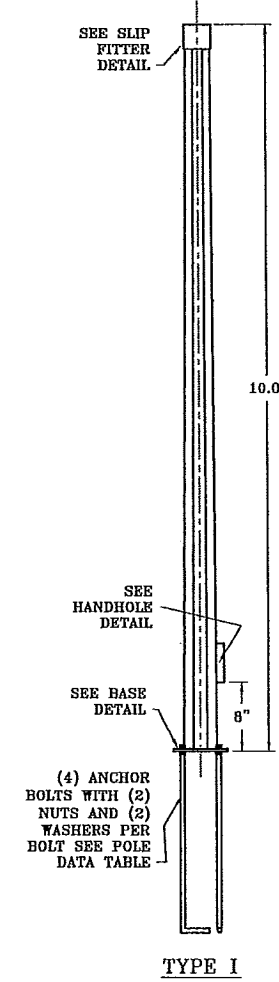
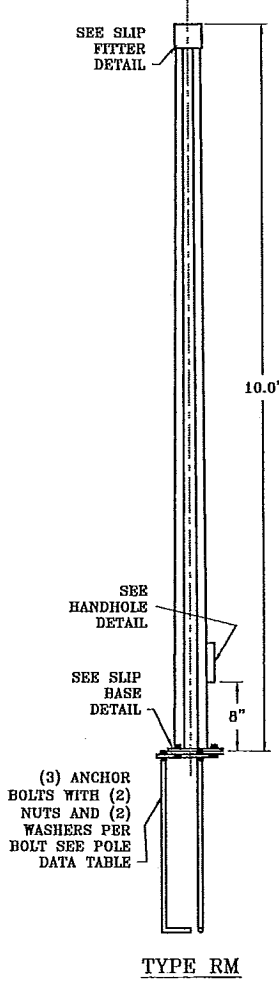
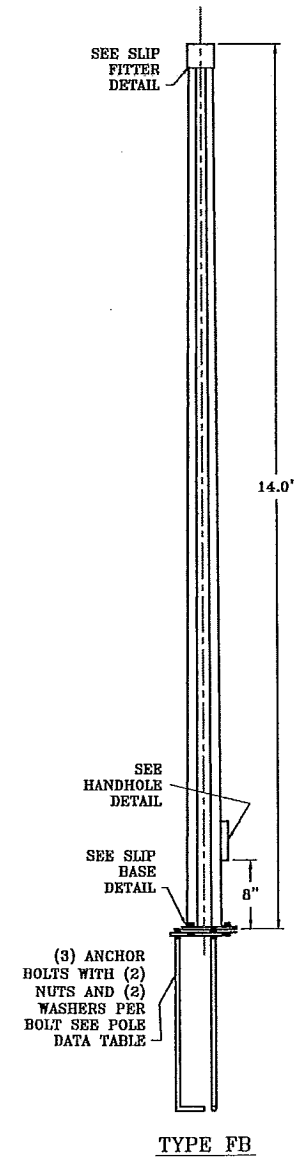
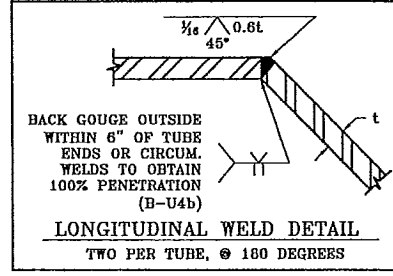
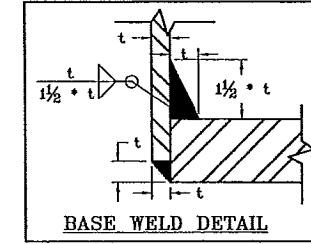


POLE DATA				
POLE DESIGNATION	BASE DIA (IN)	TOP DIA (IN)	THICKNESS (IN)	ANCHOR BOLT (IN)
TYPE PPB	2.875	2.875	0.203	1/2" x 12" x 2"
TYPE PS	5.125	4.0	0.1875	3/4" x 30" x 4"
TYPE I	5.5	4.0	0.1875	3/4" x 30" x 4"
TYPE RM	5.5	4.0	0.1875	3/4" x 30" x 4"
TYPE FB	6.0	4.0	0.1875	3/4" x 30" x 4"

**NOTES:**  
**DESIGN CRITERIA**  
 2001 AASHTO STANDARD SPECIFICATIONS FOR STRUCTURAL SUPPORTS FOR HIGHWAY SIGNS, LUMINAIRES, AND TRAFFIC SIGNALS.  
 -90 MPH 3 SECOND GUST  
 -50 YEAR DESIGN LIFE/RECURRENCE INTERVAL

**GENERAL**  
 -POLE SHALL BE OCTAGONAL IN CROSS SECTION. POLE SHAFT SHALL HAVE TAPER OF 0.14 IN/FT.  
 -FABRICATION SHALL CONFORM TO 2001 AASHTO STANDARD SPECIFICATIONS FOR STRUCTURAL SUPPORTS FOR HIGHWAY SIGNS, LUMINAIRES, AND TRAFFIC SIGNALS AND AWS D1.1 STRUCTURAL STEEL WELDING CODE.

**MATERIALS**  
 -ALL STEEL IN TUBES AND BASE PLATES SHALL CONFORM TO ASTM A572 GR50.  
 -ANCHOR BOLTS SHALL CONFORM TO ASTM F1554 GR 36 NUTS SHALL CONFORM TO ASTM A639A HEX. WASHERS SHALL CONFORM TO ASTM F844.  
 -CONNECTION BOLTS SHALL CONFORM TO ASTM A325, NUTS SHALL CONFORM TO ASTM A563 GR DJ HEAVY HEX. WASHERS SHALL CONFORM TO ASTM F436 TYPE I.  
 -GALVANIZING SHALL CONFORM TO ASTM A123 & A153.  
 -HANDHOLE FRAMES SHALL CONFORM TO ASTM A53.  
 -HANDHOLE COVERS SHALL CONFORM TO ASTM A1011 GR50.  
 -ALL PIPE SHALL CONFORM TO ASTM A53 GR B.  
 -FASTENERS LESS THAN 1/2" IN DIAMETER SHALL BE STAINLESS STEEL OR BRASS.  
 -POLE CAPS SHALL BE CAST ALUMINUM.



NO.	REVISION	DATE
1	NEW BOARDER, MINOR DESIGN CHANGES	6/08

**NORTHWEST SIGNAL SUPPLY, INC**  
 12965 SW Herman Rd. - Tualatin, OR 97062  
 PH: 503-635-4351, FX: 503-635-4341  
 www.nwsignal.com

WSDOT TYPE PPB, TYPE PS, TYPE I, TYPE RM, & TYPE FB POST

DESIGNED BY	DATE	CHECKED BY	DATE
D. EMSLIE	6/25/08	J. MEUSCH	6/27/08

DRAWING NUMBER: NWS3540  
 SHEET 1 OF 1  
 JOB NUMBER: \_\_\_\_\_