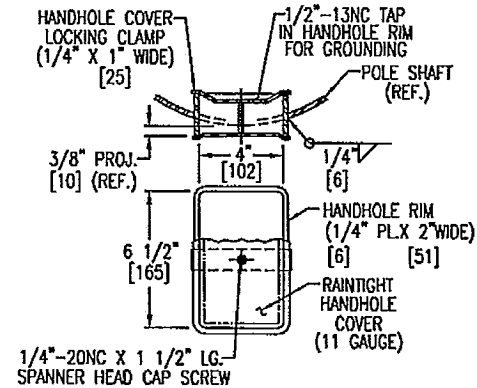


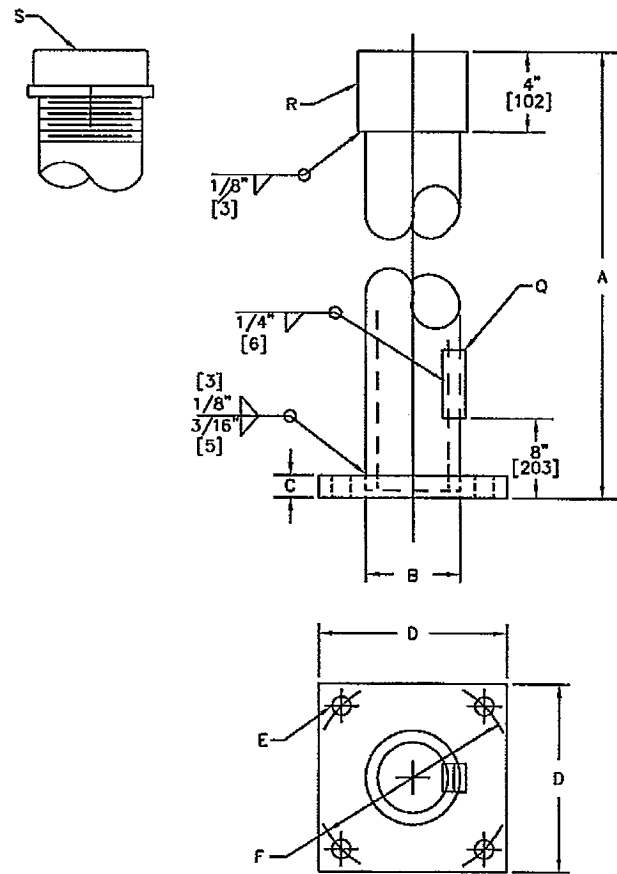
ITEM	DESCRIPTION	TYPE PPB	TYPE PS	TYPE I
A	HEIGHT	4'-6" [1.4]	8'-0" [2.4]	10'-0" [3.0]
B	POLE BASE DIAMETER	2 1/2" [64]	5 1/4" (3) [133]	5 1/4" (3) [133]
C	PLATE THICKNESS	1/2" [13]	1/2" [13]	1/2" [13]
D	PLATE WIDTH	5" [127]	9" [229]	9" [229]
E	HOLE DIAMETER	5/8" [16]	1" [25]	1" [25]
F	BOLT CIRCLE	4 1/2" [114]	8 1/2" [216]	8 1/2" [216]
J	ANCHOR BOLT, NUT & LOCK WASHER	1/2" X 12" X 2" [13 X 305 X 51]	3/4" X 30" X 4" [19 X 762 X 102]	3/4" X 30" X 4" [19 X 762 X 102]
K	LEVELING NUT & FLAT WASHER		3/4" [19]	3/4" [19]
Q	HANDHOLE SIZE		4" X 6 1/2" [102 X 165]	4" X 6 1/2" [102 X 165]
R	SLIPFITTER 4 1/2" O.D.		4" SCH.40	4" SCH.40
S	CAP DIAMETER	2 1/2" [64]		
	POLE QTY.			

MATERIAL SPECIFICATION	
SHAFT	STEEL OF 48,000 P.S.I. [330,948 kPa] MINIMUM YIELD AFTER FABRICATION: ASTM A-36 ASTM A-572 ASTM A-595 GR. A ASTM A-709 ASTM A-1008 ASTM A-1011 THE ABOVE LISTED MATERIALS ARE USED BASED UPON AVAILABILITY AT TIME OF PURCHASE OF MATERIAL LOTS FOR PRODUCING POLE AND ARM SHAFTS
BASE PLATE & FLANGES	ASTM A-36 STEEL
PIPE	ASTM A-53 GRADE "B" OR ASTM A-500 GRADE "B"
ANCHOR BOLTS	AASHTO A-307 GALV.
POLE FINISH	HOT DIP GALVANIZED PER ASTM A-123(AASHTO M-111)
HARDWARE FINISH	HOT DIP GALVANIZED PER ASTM A-153(AASHTO M-232)
WELDS LONGITUDINAL	BUTT WELD BY THE ELECTRICAL RESISTANCE PROCESS
WELDS CIRCUMFERENTIAL	BUTT WELD WITH PERMANENT BACK-UP RING (CONTINUOUS)



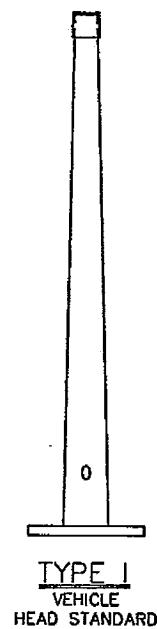
HANDHOLE DETAIL

TYPE PPB DETAIL
TYPE PS & TYPE I STANDARD DETAIL

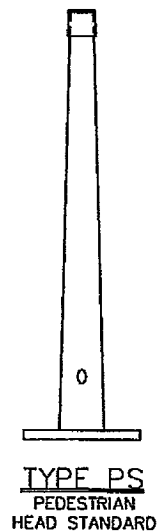


POLE & POST DETAIL

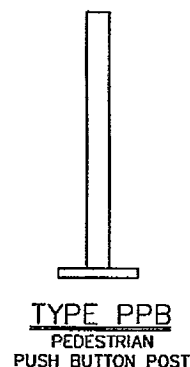
ANCHOR BOLT DETAIL
(4-REQUIRED PER POLE)



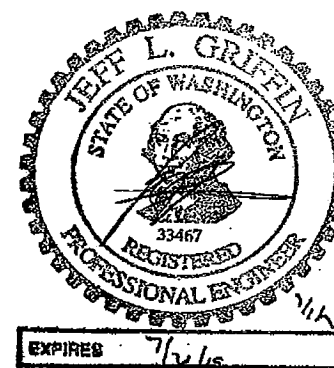
TYPE I
VEHICLE
HEAD STANDARD



TYPE PS
PEDESTRIAN
HEAD STANDARD



TYPE PPB
PEDESTRIAN
PUSH BUTTON POST



NOTES

- WELD: ALL BUTT WELDS TO BE GROUND FLUSH WITH BASE METAL.
- WELDING OF STRUCTURES SHALL BE IN ACCORDANCE WITH THE LATEST EDITION OF THE AWS D1.1 STRUCTURAL WELDING CODE - STEEL.
- TAPERED ROUND SHAFT, 4" [102] O.D. AT SLIPFITTER WELD.
- ORDERING INFO.
SERIES: _____ DWG. NO.: _____
TYPE PS--3723
- DIMENSION IN [] ARE METRIC. INCHES ARE CONVERTED MILLIMETERS AND FEET ARE CONVERTED TO METERS.
- REFERENCE WASHINGTON D.O.T. STANDARD PLAN J-7A, SHEET 1 FOR POLE SIZES.
- POLE SHAFT THICKNESS FOR TYPE I & PS POLE IS 11 GA. .1196" [3 mm].
- AASHTO 2001 DESIGN PARAMETERS:
1.) LOCATION: WASHINGTON STATE
2.) BASIC WIND SPEED: 90 MPH.
3.) DESIGN LIFE: 50 YEARS
4.) FATIGUE CATEGORY : N/A

MATERIAL LIST	
QTY.	DESCRIPTION

G	4/08	REV. HANDHOLE DETAIL	BB	GM
F	2/07	MATERIAL SPECIFICATIONS	BB	GM
E	2/06	REV. HANDHOLE DETAIL	JB	GM
D	02/03	REQUEST PER WADOT (NOTES)	MHM	RD
C	11/02	REQUEST PER WADOT	MHM	RD
B	8/99	ADDED NOTE 7	GM	
A	1/99	MISC. REV.	S.M.O.	GM
REV	DATE	DESCRIPTION	BY	APPR

APPROVED
Manufacturer's Pole Plan
Approved For Listing As A
Pre-Approved Drawing
WSDOT Bridge & Structures Office
By GB Date 7/28/08

AGENCY		Ameron POLE PRODUCTS DIVISION			
PROJECT		WA. STATE SIGNAL STANDARD			
DISTRIBUTOR		TYPE PPB, PS AND I DETAILS			
CONTRACTOR					
CUSTOMER ORDER NO.					
AMERON NO.		DRAWN: S.M.O. DATE: 4/97	SCALE	DWG. NO.	REV.
		APPR: GM DATE: 5/97	N.T.S.	M.3723	G