

Benton-Franklin Council of Governments Transportation Office

Tri-MATS



Unified Planning Work Program

Includes
Benton/Franklin/Walla Walla MPO and
RTPO Program and the WSDOT South Central Region

Adopted by the BFCG Board May 15, 2009

For State Fiscal Year 2010
July 1, 2009 to June 30, 2010

Table of Contents:

<i>Introduction</i>	<i>1</i>
<i>Fiscal Year 2009 Accomplishments</i>	<i>1</i>
<i>Proposed Funding Sources</i>	<i>1</i>
<i>MPO/RTPO Regional Transportation Issues</i>	<i>2</i>
<i>Transportation Issues to be Addressed During the Next Year</i>	<i>3</i>
<i>Work Element Descriptions</i>	<i>3</i>
220 — Program Administration, Interagency Coordination, and Public Involvement	4
221 — Regional Transportation Products	6
222 — Traffic Data Management and Monitoring Programs	8
223 - RTPO Long-Range Transportation Planning & Washington Transportation Plan (WTP) Development, Implementation and Investments	9
<i>Revenue Summary</i>	<i>10</i>
<i>Expenditure Summary</i>	<i>11</i>
<i>MPO/RTPO Boundaries Map</i>	<i>12</i>
<i>Staff Chart 2009</i>	<i>13</i>
<i>CALENDAR YEAR 2009 (PAC) COMMITTEE MEMBERS</i>	<i>14</i>
<i>CALENDAR YEAR 2009 (TAC) COMMITTEE MEMBERS</i>	<i>16</i>
MPO/RTPO Structure	18
Unfunded Planning Studies and Projects (Unranked)	19
<i>Acronyms List</i>	<i>20</i>

Introduction

The Unified Planning Work Program (UPWP) describes transportation planning activities proposed to be undertaken during the next fiscal year. These activities support a continuing, coordinated, and comprehensive transportation planning process, ensuring that projects ultimately destined for implementation are necessary, feasible, and in the best interest of the Tri-Cities Metropolitan Area and the Benton, Franklin, Walla Walla Regional Transportation Planning Organization (RTPO). Identification of these activities includes purpose, generalized scope, and financial resources necessary to complete the task. All tasks included in the UPWP are a direct result of issues, concerns, and problems identified as part of the ongoing Tri-Cities Metropolitan Area Transportation Study (Tri-MATS) Program. During fiscal year 2010 the UPWP will have work allocated to four basic elements. These elements include Program Administration, Regional Transportation Products, Data Management, and the Washington Transportation Plan/Long Range Plan, all of which address local projects having an impact on the regional transportation system. The majority of work is ongoing activities necessary to keep the Tri-MATS program current with updated information and continued interagency coordination through the committee structure. Such activities include Regional Transportation Products that are required to be developed annually and Data Management to support analysis for planning projects, which keeps the Regional Transportation Plan and its subsidiary components accurate.

Special projects are specifically targeted by the Tri-MATS committees to assist one or more local jurisdictions in advancing a project from its conception to the point where decision makers can determine overall feasibility. This sometimes includes pre-design studies, environmental analysis, and cost estimates.

Fiscal Year 2009 Accomplishments

During fiscal year 2009 most activities were completed. Ongoing activities such as the UPWP, 2009 Transportation Improvement Program (TIP), annual progress report, SAFETEA-LU requirements, and Ben Franklin Transit projects were generally completed and on schedule. Other accomplishments are specifically identified in the FHWA/WSDOT Annual Report. Key accomplishments included Commute Trip Reduction Report, Rail Status Report, Human Services Project selections, All Weather Roads Report and Forum, RTPO Annual Traffic Report, GMA Transportation Certifications, BFT Customer Awareness Survey, and FFY 2009-11 STP funding to locals including TE and America Recovery and Reinvestment Act.

Proposed Funding Sources

Work tasks identified within this document are typically funded from five basic sources. They are: local funds derived from membership to the Benton-Franklin Council of Governments (BFCG); Federal Highway Administration (FHWA) for basic surface transportation planning; Federal Transit Administration (FTA) for public transportation related planning activities; Regional Transportation Planning Organization (RTPO) Program; and the Washington State Long Range Program.

Funds shown within the UPWP are requested for each UPWP submission and amended as necessary to reflect modifications to the scope of work. If expenditures exceed budgets, the differences are derived from BFCG local funds.

MPO/RTPO Regional Transportation Issues

- Continue construction of US 12 between the Tri-Cities and Walla Walla into a partial access control 4-lane facility to allow increased capacity for moving freight, lessen congestion, and improve safety.
- Monitor the Hanford commute (50,000+ average daily traffic). There are many single-occupancy commuters traveling to few destinations. This strains the highway system and causes commuters to seek other routes through residential areas of Richland.
- Preserve rail lines (including short-haul) as a mode of transportation within the RTPO.
- Projected \$ 500 million shortfall – (2006- 2025 RTP estimate) over the next 20 years to fully fund all Regional Transportation Plan maintenance, preservation, and improvement costs.
- Reopening of Stampede Pass significantly impacted nine at-grade railroad crossings within the Tri-Cities urban area. Two grade separated crossings have been constructed the other 7 are in the planning stage.
- Barging is the second most cost-effective freight mode in the transportation system behind pipeline transport and is an integral part of the region’s river transportation system. If “drawdowns” are implemented, it will cause significant impacts to local economies and increase the need for rail and truck use.
- Continue to work on single occupant vehicle (SOV) reduction. The Census 2000 “Work Travel by Mode” in the Tri-Cities is 77% drive-alone; 14% carpool, and 9% other. National average is 76% drive alone; 12% carpool, and 12% other. The Hanford commute is about 90% SOV’s in the north Richland area.
- Supporting various modes of travel, the Tri-Cities area has developed over 100 miles of bicycle routes and paths. Ben Franklin Transit has also increased ridership by creating new routes and expanding the Public Transportation Benefit Area into the rural area of Benton County. Loss of Greyhound bus service within the RTPO has increased the need for additional inter-city transit service.
- Farm-to-market roads are subject to heavy truck usage and seasonal weight restrictions compromising the efficient movement of freight and goods. Constructing “All Weather Roads” can be the solution.
- Commute Trip Reduction (CTR) could be a Tri-Cities issue in the future.

- Continue to seek capacity, safety, and congestion solutions for improvements to US 395 through Pasco and Kennewick, (Including a new Columbia River Crossing) Red Mountain Interchange, and improved funding for other local arterials.

Transportation Issues to be Addressed During the Next Year

Tri-MATS committees, comprised of transportation professionals, have reviewed transportation needs of the metropolitan and rural areas of the three counties and have determined additional planning work should be accomplished. These accomplishments should improve access to state highways, as well as provide information on transit ridership needs and preventative maintenance on local roads.

Based on input from the committees and the federal/state emphasis areas, this one-year program will stress the continuation of an updated Regional Transportation Plan (RTP), continuation of data collection, special reports, and SAFETEA-LU requirements. In addition, the GMA requirements for transportation planning and certification will be continued.

Specific issues will continue to focus on regional safety improvements (reduced collisions = saved lives) and economic development improvements by completing identified projects in the urban area. High profile projects and tasks that will be supported include: US 12 four laning to Walla Walla, Red Mountain Interchange, Columbia River Crossing Study, Non-Motorized Plan, Transportation Demand Management, US 395 improvements, 2010 Census transportation impacts, and continuing work on inter-city and inter-jurisdictional public transportation. Intermodal activities will be developed throughout the work program, i.e. continued focus of rail, barge, and freight impacts. Additionally, impacts of TEA-4 reauthorization and designation of TMA/MPO status for Tri-Cities and Walla Walla urban area will be monitored. An unfunded portion of the UPWP (Page 19) lists important planning projects where funding is not secured.

The MPO/RTPO is dedicated to a truly multi-modal transportation system, needed to support our economically diverse region. Roads are very important but marine, rail, air, barge, transit and freight movements are all necessary to balance the overall system.

Work Element Descriptions

This work program has been divided into four categories. Each category addresses distinct activities necessary to maintain or enhance the Metropolitan Planning Organization (MPO) process and the RTPO Program. Short narratives and cost estimates are provided for each category and sub-element.

If a task is considered on-going it has been coded with O. If it is considered a product it has been coded with a P.

220 — Program Administration, Interagency Coordination, and Public Involvement

This category provides ongoing staff support for program management and development, augments committee activities, and provides transportation expertise to Tri-MATS members lacking staff capabilities. FTA related activities are included.

- 220.1 Administer and manage the continuing transportation planning program of the MPO and RTPO, including supervision of staff, office management, personnel activities, training conferences, committee participation, travel, etc. O
- 220.2 Staff support for all Tri-MATS and Board committees, including processing and submitting recommendations to WSDOT/FHWA, Legislators, etc. O
- 220.3 Support economic vitality of the metropolitan area and participate in economic development forums and other processes as appropriate. O
- 220.4 Update Tri-MATS operating guidelines, i.e. general documents following MPO expansion into Walla Walla and TEA-4 reauthorization. P
- 220.5 Inter-Jurisdictional Coordination (Includes 25 Jurisdictions) — Meeting attendance to support coordination and cooperation for transportation planning and program solutions. Includes educational activities, newsletter, Good Roads and Transportation Association, forums etc. O
- 220.6 Transportation System Management and Operations - Promote management and operation of the transportation system to meet a broad range of customer's needs. Includes encouragement in innovation, promotion of a national dialogue, and advancement of the state of the practice. O
- 220.7 Monitor Safety and Security in all stages of the transportation planning process by assessment of facilities, identification of evacuation routes, and exercise participation with Benton-Franklin-Walla Walla safety agencies. Review WSDOT accident data. O, P
- 220.8 Coordination with environmental resource agencies to ensure early and continuous coordination with environmental resource protection and management plans. Assess impact on RTP and projects. O
- 220.9 Continue RTPO partnering efforts to support capacity expansion projects like US 12 from the Wallula to Walla Walla and the Red Mountain Interchange project. O
- 220.10 Continue education of SAFETEA-LU funding programs, MPO requirements, planning guidelines, Tea 4 Recommendations, etc. O, P
- 220.11 Prepare and support Freight Mobility strategies and strategic corridors. O
- 220.12 Continue TDM/CTR meetings and activities within the MPO area. O, P
- 220.13 Conduct ongoing public outreach efforts and provide educational materials. O, P

- 220.14 Rural STP Program – Administration of Programs for Benton, Franklin and Walla Walla County Jurisdictions. Includes coordination, tracking of funds and obligation balances. O, P
- 220.15 Urban STP Program - Administration of Program for Tri-Cities Urban Jurisdictions. Includes coordination, tracking funds, and obligations. O, P
- 220.16 Enhancement Program –Administration of Program includes staff education per FHWA/WSDOT, call for projects, project processing and ranking, tracking funds and obligating, etc. O
- 220.17 Tri-Cities Transportation Survey. P
- 220.18 PTBA Requests – Assist BFT in document data needs for population, routes, demographics, revenue, mapping, etc. O, P
- 220.19 Complete tasks associated with the Tri - Cities Community Round Table (CRT) on transportation. O, P

220	LOCAL	FHWA/FTA	
	\$49,000	\$109,042	\$158,042 (220 MPO)
220	RTPO (State)	\$30,000	<u>\$30,000 (220 RTPO)</u>
			\$188,042 Total

221 — Regional Transportation Products

This category supports specific reports and documents required to be developed or maintained annually. These documents include: Unified Planning Work Program and Amendments (UPWP), Transportation Improvement Program (TIP), Regional Transportation Plan (RTP) Amendments, Annual Report, other required certifications, and public transportation activities related to FTA. Each report is required to fulfill obligations of the Metropolitan Planning Process and Growth Management Act (GMA) requirements.

- 221.1 UPWP - Development, review and implementation of the Unified Planning Work Program for the upcoming fiscal year. (Includes amendments). O, P
- 221.2 Transportation Improvement Program - Federal, State, and locally funded projects, CY 2010-2013. Complete amendments of all transportation projects in the MPO/RTPO as required by FHWA/WSDOT. O, P
- 221.3 Update the Non-motorized Bike/Pedestrian Plan for the RTPO and monitor the Regional Transportation Plan and amend as necessary. O, P
- 221.4 Complete FHWA/FTA requirements – Title VI, certifications, annual reports, Intelligent Transportation Systems Architecture (Approved per WSDOT 2004), etc. O, P
- 221.5 Functional Classification – Process and amend all requests for changes and review to the Functional Class System in the RTPO. O, P
- 221.6 GMA Activities – Review level of service methodologies and regional transportation strategies used by jurisdictions. Monitor transportation services and facilities of statewide significance. Review updates of comprehensive plans. O, P
- 221.7 Mapping – Includes support mapping for reports, presentations, committee meetings, illustrations for policy decisions, jurisdictional requests, BFT requests (Corridor density map), etc. O, P
- 221.8 Certification of Transportation Elements for the RTPO – Continue certification of all RTPO Jurisdictions to comply with GMA requirements and LOS requirements. O, P
- 221.9 Complete all activities and requirements related to the 2010 census. Includes coordination with the census bureau. O, P
- 221.10 Review and make revisions to Tri-Cities Bike map including transit accessories, i.e. park and ride lots, bike/lockers, etc. O, P
- 221.11 Administer Human Services Coordination Grant Process for 2009-2011. O, P
- 221.12 Complete BFT Attitude and Awareness survey. Includes excel report, written report and electronic transfer. P

221	LOCAL \$55,000	FHWA/FTA \$80,000	\$135,000 (221 MPO)
221	RTPO (State)	\$30,000	<u>\$ 30,000 (221 RTPO)</u> \$165,000 TOTAL

222 — Traffic Data Management and Monitoring Programs

This activity category provides a whole array of data collection, analysis and processing services required to maintain program activities described in other categories within this work program.

Traffic data, population and employment data and functional classification system information are all presently stored within the BFCG computer system. Maintenance of this data permits local, state, and federal agencies, as well as private individuals, excellent opportunities for obtaining base data for virtually any type of program or project. In addition, much of the data is used for Tri-MATS activities such as traffic modeling, transit route analysis, and special projects.

- 222.1 Transportation Model – Monitor and modify the Transportation Model for the Tri-Cities Urban Area i.e. Includes software updates, data collection needs, consultant work, demographic information, 2010 Census Transportation Planning Package, TAZ updates, etc. We are also attempting to use automated license plate recognition cameras to capture external O-D data (WSDOT to complete work). O
- 222.2 Traffic Counting program – Complete annual requested traffic counting program of locations throughout the Tri-Cities Metropolitan Area. Spreadsheet of counts will be available on line at the BFCG web-site. Update “Physical” traffic counts in the RTPO as needed. O, P
- 222.3 Continue RTPO “Transportation Trends” report. Continue to refine MPO and expand to all of the RTPO. Trends to include population growth, road miles, VMT, LOS, accidents, bus ridership, mode split, etc. (Report started in 2002 using 1990 base year data). P
- 222.4 Continue development of strategies and funding for the Columbia River Bridge crossing (CRCS) with WSDOT and other urban MPO jurisdictions. O
- 222.5 Assist and supplement countywide efforts on freight/truck counts to support data collection for FMSIB and other all weather road projects. P

222	LOCAL	FHWA/FTA	
	\$ 26,000	\$ 80,000	\$ 106,000 (222MPO)
222RTPO (State)		\$ 16,034	<u>\$ 16,034 (222 RTPO)</u>
			<u>\$ 122,034 TOTAL</u>

**223 - RTPO Long-Range Transportation Planning & Washington
Transportation Plan (WTP) Development, Implementation and Investments**

- Assist WSDOT in transportation plans like the Washington Transportation Plan, Moving Washington, Long Range Air Transportation System, and Multimodal Plan. O, P
- Continue developing strategies for funding and prioritization of all-weather road in the RTPO. O
- Collect, model, and analyze data applicable to the statewide plan, modal and issue plans, and the regional long range plan. O, P
- Funding augmentation for the GMA activities regional transportation and growth management planning. Includes certifications and regional strategy. O, P

223 RTPO (State) \$56,333

Revenue Summary

**TRI-CITIES METROPOLITAN AREA
TRANSPORTATION STUDY AND RTPO
2010 UNIFIED PLANNING WORK PROGRAM
REVENUE SUMMARY**

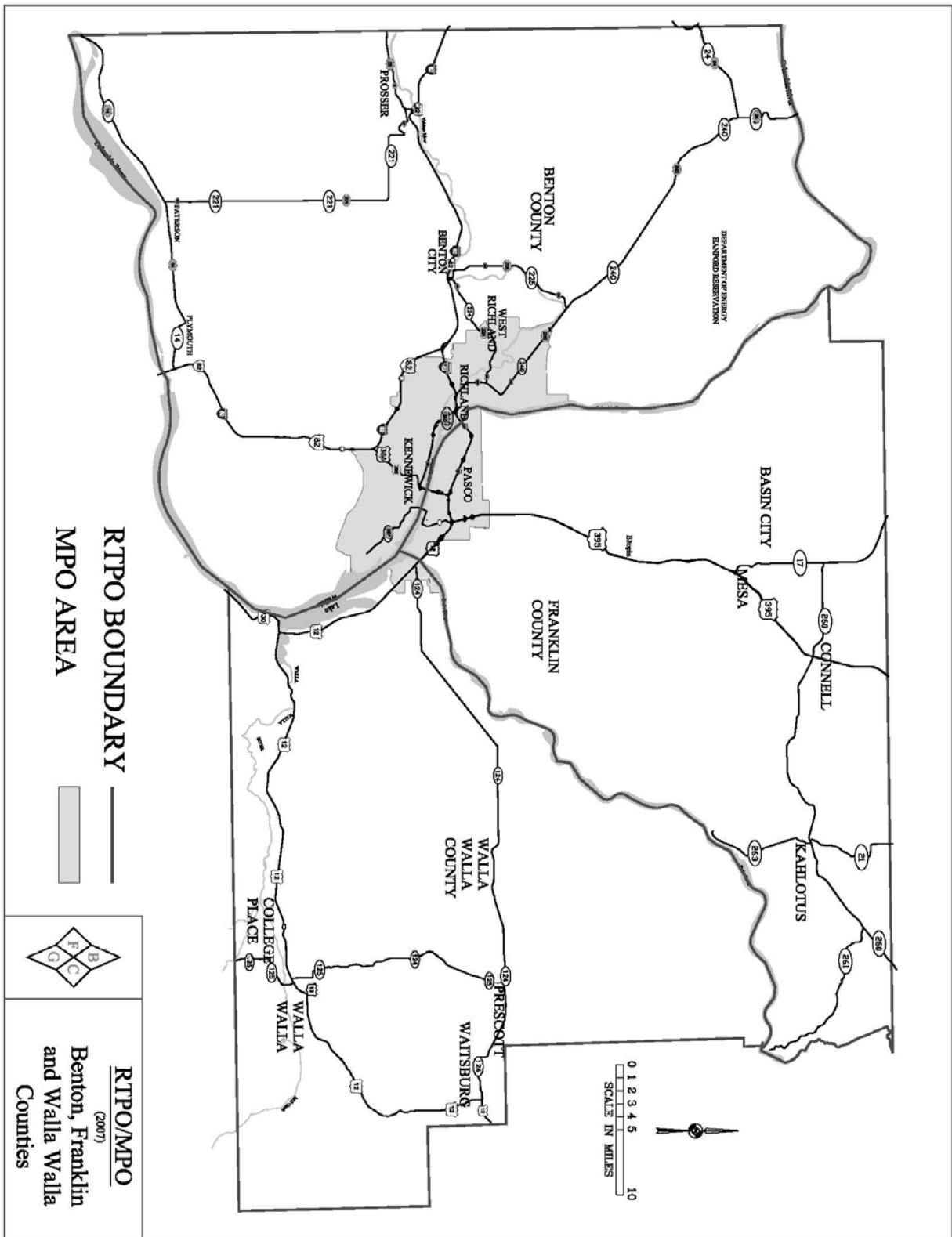
	LOCAL	FHWA/FTA	RTPO	TOTAL
220 PROGRAM ADMINISTRATION & MANAGEMENT	49,000	125,743	30,000	204,743
221 REGIONAL TRANSPORTATION PRODUCTS	55,000	80,000	30,000	165,000
222 DATA MANAGEMENT & MONITORING PROGRAMS	26,000	80,000	16,034	122,034
224 LONG RANGE PLANNING			56,314	56,314
TOTALS	130,000	285,743	132,348	548,091

Expenditure Summary

**TRI-CITIES METROPOLITAN AREA
TRANSPORTATION STUDY AND RTP
2010 UNIFIED PLANNING WORK PROGRAM
EXPENSE SUMMARY**

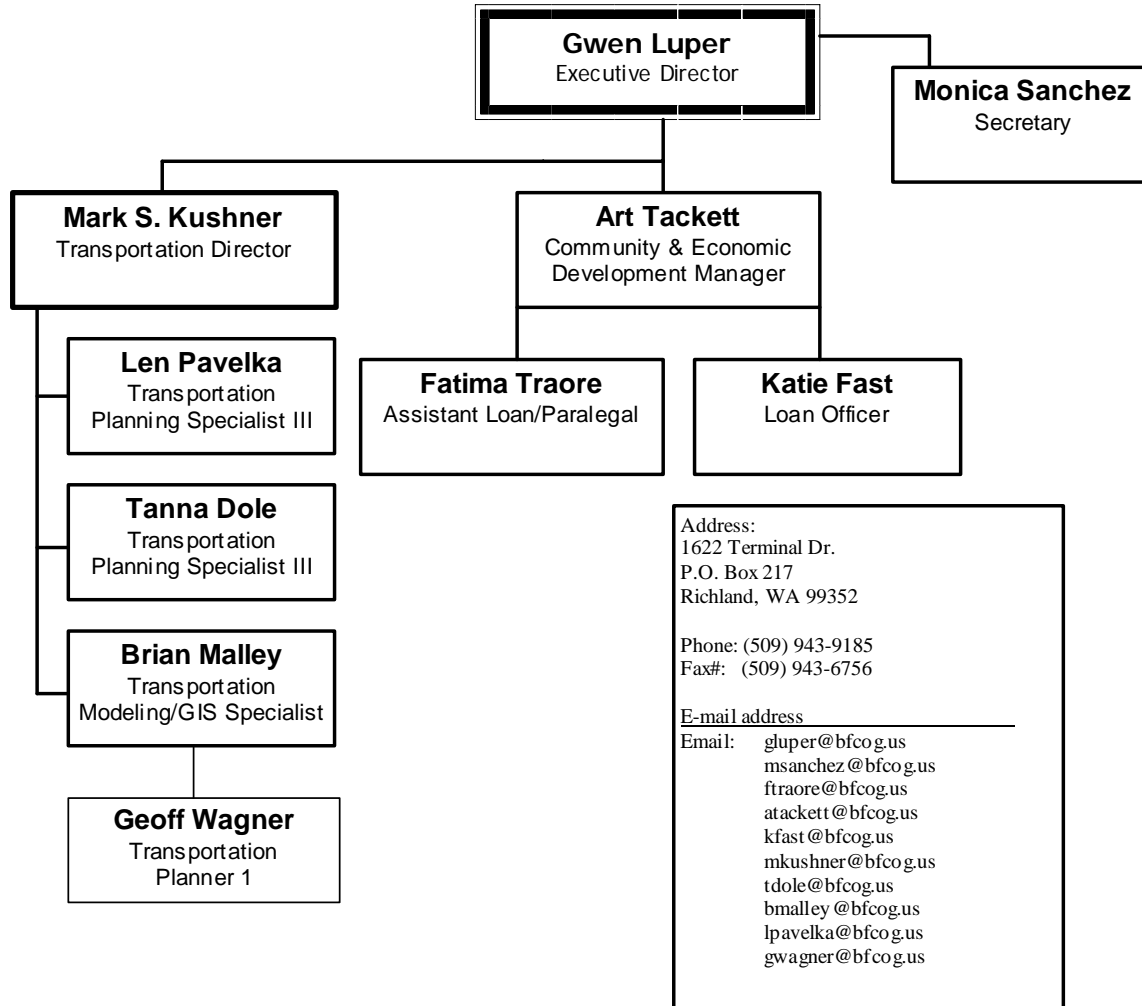
	DIRECT SALARIES	TRAVE L	MISC	OVERHEAD	TOTAL
220 PROGRAM ADMINISTRATION & MANAGEMENT	86,000	2,900	3,441	112,402	204,743
221 REGIONAL TRANSPORTATION PRODUCTS	68,500	800	6,170	89,530	165,000
222 DATA MANAGEMENT & MONITORING PROGRAMS	49,600	1,100	6,507	64,827	122,034
224 LONG RANGE PLANNING & WTP UPDATE	24,000	208	738	31,368	56,314
COLUMN TOTALS	228,100	5,008	16,856	298,127	548,091

MPO/RTPO Boundaries Map



Benton-Franklin Council of Governments

2009
Staff



TRI-MATS RTPOLICY ADVISORY COMMITTEE
CALENDAR YEAR 2009 (PAC) COMMITTEE MEMBERS

Jerome Delvin o	(360) 786-7614	WA State Senate
Mike Hewitt o	527-4111	WA State Senate
Mark Schoesler o	659-1909	WA State Senate
Maureen Walsh o	509-200-1232	WA St. House of Representatives
Laura Grant-Herriot o	360-786-7828	WA St. House of Representatives
Don Cox o	360-786-7942	WA St. House of Representatives
Joe Schmick o	360-786-7844	WA St. House of Representatives
Brad Klippert o	308-2231	WA St. House of Representatives
Larry Haler o	308-1957	WA St. House of Representatives
Dave Rose	946-5116 (W) 627-5266 (H)	City of Richland, Council Member
Leo Bowman, Vice-Chair	736-3080	Benton County, Commissioner
Bob Koch	545-3535 (W)	Ben Franklin Transit (Franklin County Commissioner)
Julie Jones	967-5771 (H)	City of West Richland, Council Member
Brad Peck	545-3535 (W)	Franklin County, Commissioner
Bob Olson	539-6150	City of Kennewick, Council Member
Bob Hoffmann	547-7373 (H)	City of Pasco, Council Member
Bill Clark	509-863-4702	Port of Pasco, Commissioner
Don Whitehouse	577-1620	WSDOT South Central Region, Administrator
Bob Larson	375-1547 (H)	Port of Benton, Commissioner
Randy Taylor, Chair	875-4367 (W)	City of Prosser, Council Member
Gene Wagner	783-6896 (H)	Port of Kennewick, Commissioner
Gary Walton	234-2701	City of Connell, Mayor
Austin Davis	265-4259	City of Mesa, Mayor
Lloyd Carnahan	588-3430	City of Benton City, Mayor
Jerry Beckner	282-3372	City of Kahlotus, Mayor
Perry Dozier	524-2505 (W)	Walla Walla County, Commissioner
Jerry Cummins	525-8848	City of Walla Walla, Council Member

Rick Newby	527-6233	City of College Place, Council Member
Vacant		City of Waitsburg
Elizabeth McCaw	849-2621	City of Prescott, Mayor
Fred Bennett	525-3455	Port of Walla Walla, Commissioner
Gregg Loney	525-1292	Valley Transit, Board Member
Carol Moser	627-5198 (H)	Washington State Trans. Commission
Staff - Mark Kushner	943-9185	BFCG, Transportation Director

o Ex-officio Member

4/28/09

TRI-MATS RTPO TECHNICAL ADVISORY COMMITTEE
CALENDAR YEAR 2009 (TAC) COMMITTEE MEMBERS

Tim Fife tfife@co.franklin.wa.us	545-3514	Franklin County Engineer/Public Works Director
Brian Thorp Brian_thorp@co.benton.wa.us	736-5611	Benton County Engineer
Kathy McMullen kcmullen@bft.org	734-5107	BFT, Manager of Transit Development
Bob Alberts albertsb@pasco-wa.gov	545-3446	City of Pasco, Public Works Director
Steve Stairs, Vice-Chair sstairs@ci.richland.wa.us	942-7504	City of Richland, Traffic Engineer
Roscoe Slade roscoe@westrichland.org	967-7105	City of West Richland, Public Works Director
Randy Hayden rhayden@portofpasco.org	547-3378	Port of Pasco, Engineer
Bill Preston prestob@wsdot.wa.gov	577-1630	WSDOT Planning Engineer, Yakima
Roger Wright roger@rgwenterprises.com	366-7455	Port of Benton, Engineering Consultant
Frank Powell Frank_w_powell@rl.gov	373-6452	Fluor Daniel Hanford, Traffic Engineering
Larry Peterson lpeterson@portofkennewick.org	586-1188	Port of Kennewick, Director of Planning and Development
Peter Beaudry Peter.beaudry@ci.kennewick.wa.us	585-4292	City of Kennewick, Public Works Director
Vacant		Battelle N.W.,
L. J. DaCorsi publicworks@cityofprosser.com	786-2332	City of Prosser, Public Works Director
Larry Turner connelpw@centurytel.net	234-2701	City of Connell
Teresa Standridge*	265-4253	City of Mesa, Clerk

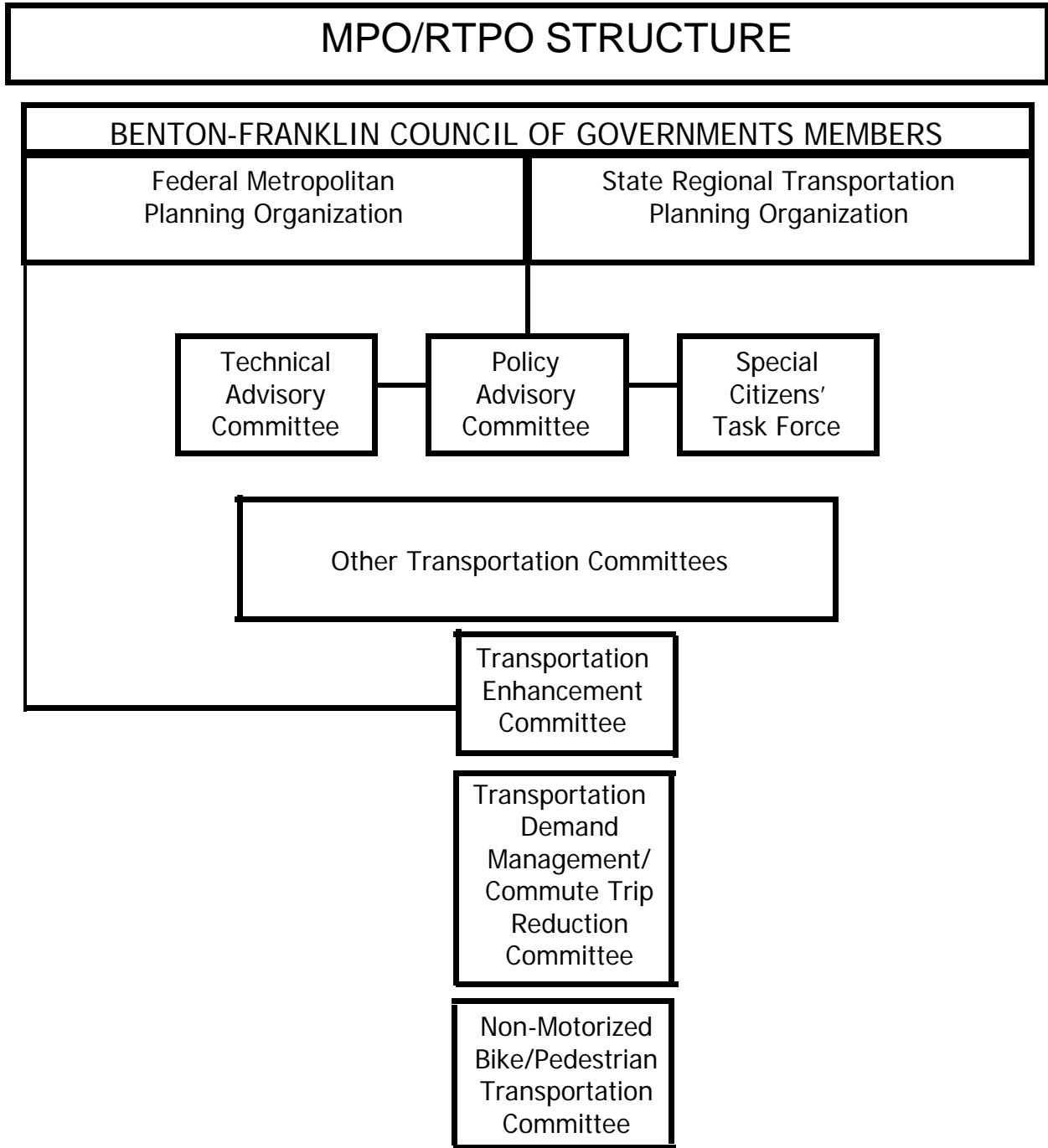
cityclerkmesa@centurytel.net
Bob Spink 946-1581 City of Benton City, Engineering Consultant
Bob.spinkengineering@verizon.net
Sharon McCaleb* 282-3372 City of Kahlotus, City Clerk
cityofkahlotus@hotmail.com
Randy Glaeser 524-2711 Walla Walla County Engineer/Public Works Director
rglaeser@co.walla-walla.wa.us
Wrandoll Morua 527-4537 City of Walla Walla, City Engineer
wbrenes@ci.walla-walla.wa.us
Paul Hartwig 529-1200 City of College Place
phartwig@ci.college-place.wa.us
Randy Hinchliffe 337-6371 City of Waitsburg, Clerk
rjhinch@gotvc.net
Steve Myers City of Prescott, Public Works Director

Paul Gerola 525-3100 Port of Walla Walla, Economic Development Director
pg@portwallawalla.com
Dick Fondahn, Chairman 525-9140 ext. 12 Valley Transit, Transit Manager
dick@valleytransit.com
Mark Kushner 943-9185 BFCG/Staff, Transportation Director
mkushner@bfcog.us
**Bill Wiebe 705-7965 WSDOT Headquarters, Olympia (Planning)
wiebeb@wsdot.wa.gov
**Jerry Ayers 705-7912 WSDOT Headquarters, Olympia (Transit)
ayresj@wsdot.wa.gov
** Roger Arms 577-1780 WSDOT Yakima (Local Programs)
armsr@wsdot.wa.gov

* City Clerk

** Ex-Officio Members

Updated 04/28/09



Unfunded Planning Studies and Projects (Unranked)

1. Amtrak Passenger Service Study
Conduct a study to evaluate the need for passenger service from Walla Walla/Pasco to Auburn.
2. Evaluate/implement US 395 Study recommendations for increased travel efficiencies (US 395 Corridor Study, April 1995) Includes Blue Bridge analysis.
3. Update Lewis Street/Sylvester Street/US 395 Interchange Study
4. Stampede Pass Freight Issue Study
5. Columbia River Crossing Bridge Study (CRCS)
6. I-82 Interchange Red Mountain Study Phase 1- 6.

Acronyms List

Acronym: Stands For:

BFCG	Benton Franklin Council of Governments
BFT	Ben Franklin Transit
CCB	Columbia Center Blvd.
CRT	Community Round Table
CTR	Commute Trip Reduction
CY	Calendar Year
FHWA	Federal Highway Administration
FMSIB	Freight Mobility Strategic Investment Board
FTA	Federal Transit Administration
FTE	Full Time Employee
GIS	Geological Informational System
GMA	Growth Management Act
LOS	Level of Service
MPO	Metropolitan Planning Organization
PAC	Policy Advisory Committee
PTBA	Public Transportation Benefit Area
RTP	Regional Transportation Plan
RTPO	Regional Transportation Planning Organization
SAFETEA-LU	Safe, Accountable, Flexible, Efficient Transportation Equity Act – Land Use
STP	Surface Transportation Program
SOV	Single Occupant Vehicle
TAC	Technical Advisory Committee
TEA-4	Transportation Equity Act
TDM	Transportation Demand Management
TIP	Transportation Improvement Program
Tri-MATS	Tri-Cities Metropolitan Area Transportation Study
UPWP	Unified Planning Work Program
VMT	Vehicle Miles of Travel
WA-Trans	Washington Transportation Framework Project
WSDOT	Washington State Department of Transportation
WTP	Washington Transportation Plan