

WSDOT Aviation Monthly Report July 2010

Arlington Fly-in fast becoming one of the biggest aviation events in North America

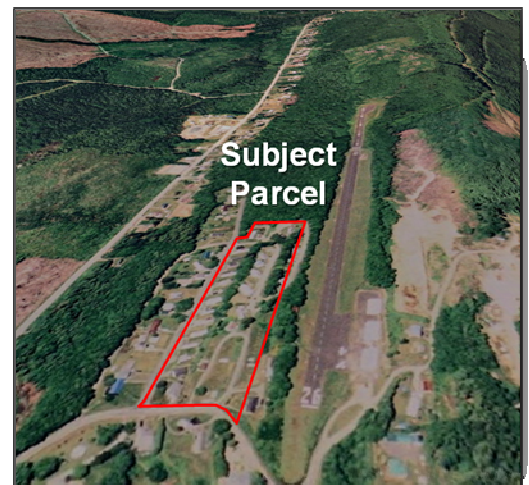
Good weather is anticipated to draw a large number of aircraft for the Arlington Fly-in on Wednesday, July 7 – Sunday, July 18. About 1,200 airplanes flew in last year many of which pitched their tents to enjoy pilot comradeship. The five day event features everything from military aircraft to powered parachutes. To help open the event, expect to see a fly-by of the Boeing 787 Dreamliner. Air shows occur daily, shutting down the airport to normal traffic for one hour. A temporary air traffic control tower will be in operation to accommodate the large amount of aircraft traffic and pilots are asked to check Notices to Airman NOTAMs as part of their pre-flight briefings. WSDOT Aviation, which is based at the airport, has been invited to make comments at one of the opening events featuring the FAA Regional Director Kathryn Vernon.

Planners review residential proposal adjacent to Sekiu Airport

WSDOT planners received a request from Clallam County for technical assistance regarding a proposal to subdivide a parcel adjacent Sekiu Airport. The proposal is to consolidate the existing RV Park into a discrete area and then subdivide the rest of the manufactured home community into an additional 18 lots for single family dwellings.

Clallam County has adopted comprehensive plan policies to protect its aviation assets. These policies include:

- Sekiu Airport is recognized as an essential public facility.
- Coordinate land use development in and adjacent to public use airports to reduce hazards that may endanger the lives and property of the public and aviation users and to protect the viability of Clallam County's public use general aviation airports.
- Discourage siting of incompatible land uses around public use airports.
- Protect navigable airspace, as provided in FAR Part 77- Objects Affecting Navigable Airspace.



- Consult with WSDOT Aviation to provide input into the land use planning efforts around Clallam County's public use airports.

There are no zoning regulations in place to protect the airport from the encroachment of residential development, an incompatible use. In fact, the proposal is allowable under the parcel's current zoning designation of Urban Residential High Density (URH). The URH zoning allows up to four dwelling units an acre. WSDOT will comment on the proposal and recommend alternatives and mitigation measures.

WSDOT Construction Project Manager Visits North Central Airports

WSDOT Aviation Construction Project Manager, Eric Johnson hit the road recently traveling to airports in the North Central region of the state. In Winthrop, Johnson along with Aviation's Paul Wolf and consultant Matt Rogers officially kicked off the long awaited airport improvement project at the State's Methow Valley State Airport where surveying and utility locates were being conducted. The project to be constructed in 2011 will replace the airport's failing runway lighting system; displace the runway thresholds to provide clear approaches; construct a small structure to contain electrical equipment; add precision approach path indicators (PAPIs); and replace non-standard distance remaining signs.

While in the Methow Valley, Johnson checked in with the Town of Twisp who is set to begin their runway rehabilitation and widening project later this month. In 2007 the Town of Twisp received a \$64,315 grant from WSDOT Aviation for design and engineering, a \$250,000 grant in 2009 for Phase I construction and has been awarded a grant for Phase II construction from the current funding cycle.

In Okanogan, Johnson inspected a state funded crack sealing project completed late last fall. Overall the pavement looked good, but a number of cracks were beginning to open back up. Johnson will recommend that the City do some minor crack sealing to address the emerging cracks.

Next stop Omak, Johnson met with City Administrator Ralph Malone to deliver the latest grant offer and agreements and to discuss their current project where they will be constructing taxiway turnarounds, rehabilitating taxiway and apron pavements, windsock/segmented circle, distance remaining signs, and holding position signs.

At the Mansfield and Waterville Airports owned by the Port of Douglas County, Johnson stopped to take photographs of their threshold lights and PAPI relocation project areas. The photos will be used to supplement submittals to WSDOT Environmental Services for their cultural resources review of the projects in compliance with the Governor's Executive Order 05-05.

Johnson's final stop on the trip was the Quincy Municipal Airport where he met with Port Commissioner Patric Connelly to inspect the Grant County Port District No. 1's fog seal

project completed last fall. The runway and apron which received an overlay in 2005 were looking good with the exception of some cracks beginning to form along the pavement joints on the runway. A recommendation was made to the Port to do some crack sealing before this coming winter.