

# 2012 Partnership for Environmental Excellence in Construction Management Award

## AGC / WSDOT Joint Meeting

**Megan White, P.E.**  
Director, Environmental Services

**Dave Dye, P.E.**  
Deputy Secretary

**Paula Hammond**  
Secretary of Transportation

**Steve Reinmuth**  
Chief of Staff

# Award Criteria

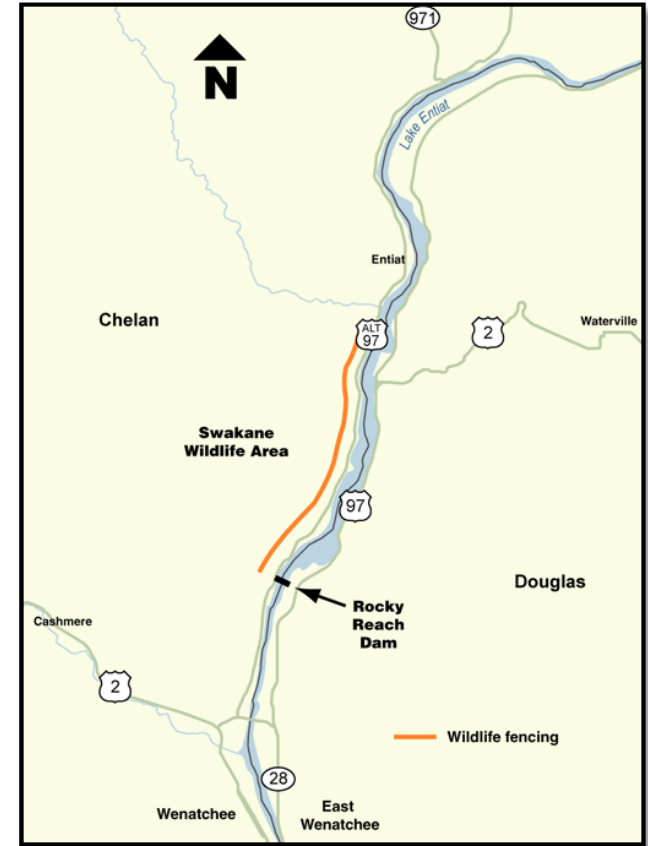
1. Preventative Measures
2. Responsiveness during Construction
3. Innovative Problem Solving



# Nominee - US 97A Wildlife Fencing Stage 2 (NC)



Installing Wildlife Fencing



# Nominee - SR 433 Lewis and Clark Bridge Substructure Painter (SW)



Contractor's service barge at Pier 3

# Nominee - SR 503 Lewisville Park Vic Climbing Lanes (SW)



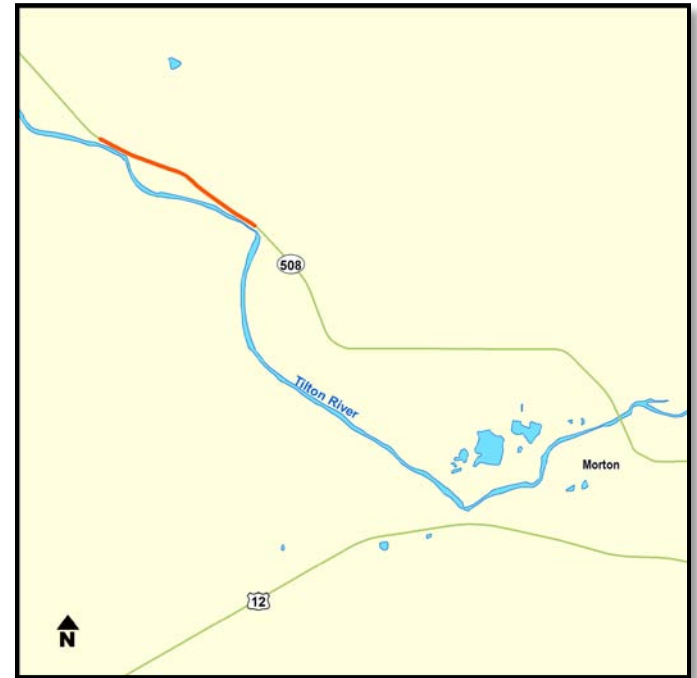
Wetland Mitigation Site



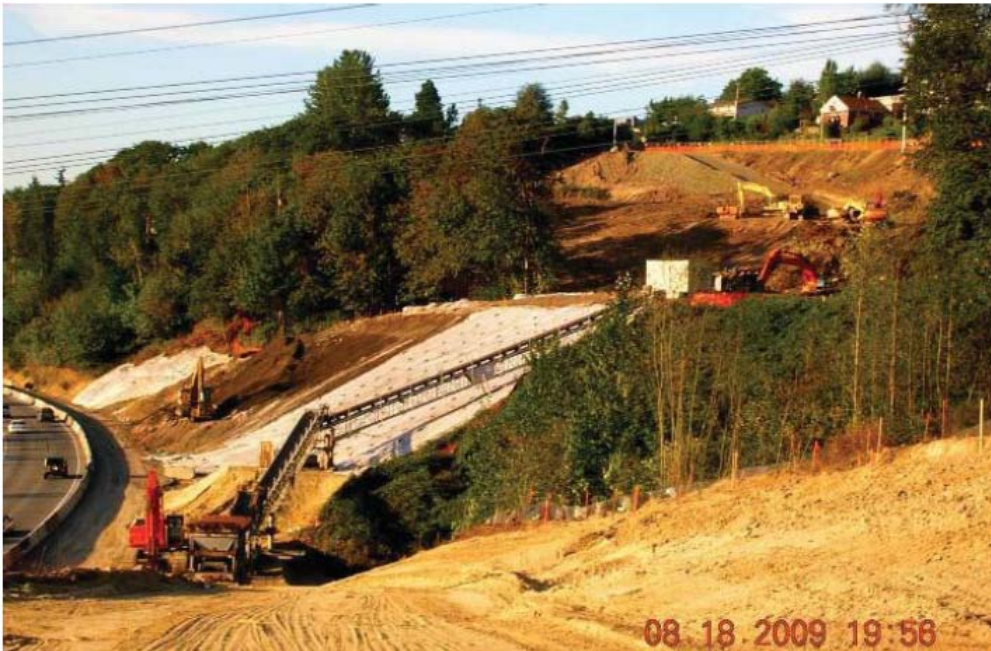
# Nominee - SR 508 Davison Rd Vic. Bank Erosion Repair (SW)



Rock Revetment and Large Woody Debris



# Nominee - I-405 / I-5 to SR 169 Widening & SR 515 I/C Stage 2 (NW)



Conveyor system reduced 10,000 truck trips through Renton.



# Western Washington Award Winner

## I-405, I-5 to SR 169 Widening & SR 515 I/C Stage 2

I-405 Corridor Design Builders  
Kory Veldman, Project Manager

and

Lisa Hodgson's PE Office

# Eastern Washington Award Winner

## US 97A Wildlife Fencing Stage 2

RM Shearer, Inc.  
Rod Shearer

and

Kevin Waligorski's PE Office  
Mike Andreini administered the contract

# WSDOT'S Environmental Services Office

Thanks You!

For your role in protecting Washington's  
environment

