

## Maintenance Accountability Process

### Activity Service Level Targets and Service Levels Delivered

### Statewide - CY 2006

Activity	1.0		1.9		2.0		2.9		3.0		3.9		4.0		4.9		5.0		5.9	
	+	A	-		+	B	-		+	C	-		+	D	-		+	F	-	
<b>Group - 1 Roadway Maintenance and Operations</b>																				
1A1 Pavement Patching & Repair*			✓	⊙																
1A2 Crack Sealing*									✓		⊙									
1A3 Shoulder Maintenance						✓			⊙											
1A4 Sweeping and Cleaning		✓		⊙																
1B1 Safety Patrol									✓	⊙										
<b>Group - 2 Drainage Maintenance and Slope Repair</b>																				
2A1 Maintain Ditches			✓	⊙																
2A2 Maintain Culverts									✓	⊙										
2A3 Maintain Catch Basins and Inlets					✓	⊙														
2A4 Maintain Detention/Retention Basins									✓	⊙										
2A5 Slope Repair		✓		⊙																
<b>Group - 3 Roadside and Vegetation Management</b>																				
3A1 Litter Pickup													✓	⊙						
3A2 Noxious Weed Control		✓		⊙																
3A3 Nuisance Vegetation Control		✓					⊙													
3A4 Control of Vegetation Obstructions			✓				⊙													
3A5 Landscape Maintenance											✓	⊙								
<b>Group - 4 Bridge and Urban Tunnel Maintenance and Operations</b>																				
4A1 Bridge Deck Repair			✓				⊙													
4A2 Structural Bridge Repair									✓	⊙										
4A3 Bridge Cleaning						✓				⊙										
4B1 Movable and Floating Bridge Operations		✓		⊙																
4B2 Keller Ferry Operations					✓	⊙														
4B3 Urban Tunnel Systems					✓	⊙														
<b>Group - 5 Snow and Ice Control Operations</b>																				
5B1 Snow and Ice Control Operations			✓						⊙											
<b>Group - 6 Traffic Control Maintenance and Operations</b>																				
6A1 Pavement Striping Maintenance***									✓	⊙										
6A2 Raised/Depressed Pavement Marker Maint.						✓	⊙													
6A3 Pavement Marking Maintenance									✓		⊙									
6A4 Regulatory Sign Maintenance							✓		⊙											
6A5 Guide Sign Maintenance			✓				⊙													
6A6 Guidepost Maintenance										✓	⊙									
6A7 Guardrail Maintenance		✓	⊙																	
6B1 Traffic Signal Systems									⊙		✓									
6B2 Highway Lighting Systems				⊙	✓															
6B3 Intelligent Transportation Systems							⊙	✓												
<b>Group - 7 Rest Area Operations</b>																				
7B1 Rest Area Operations						✓	⊙													

\*Data collected from WSPMS

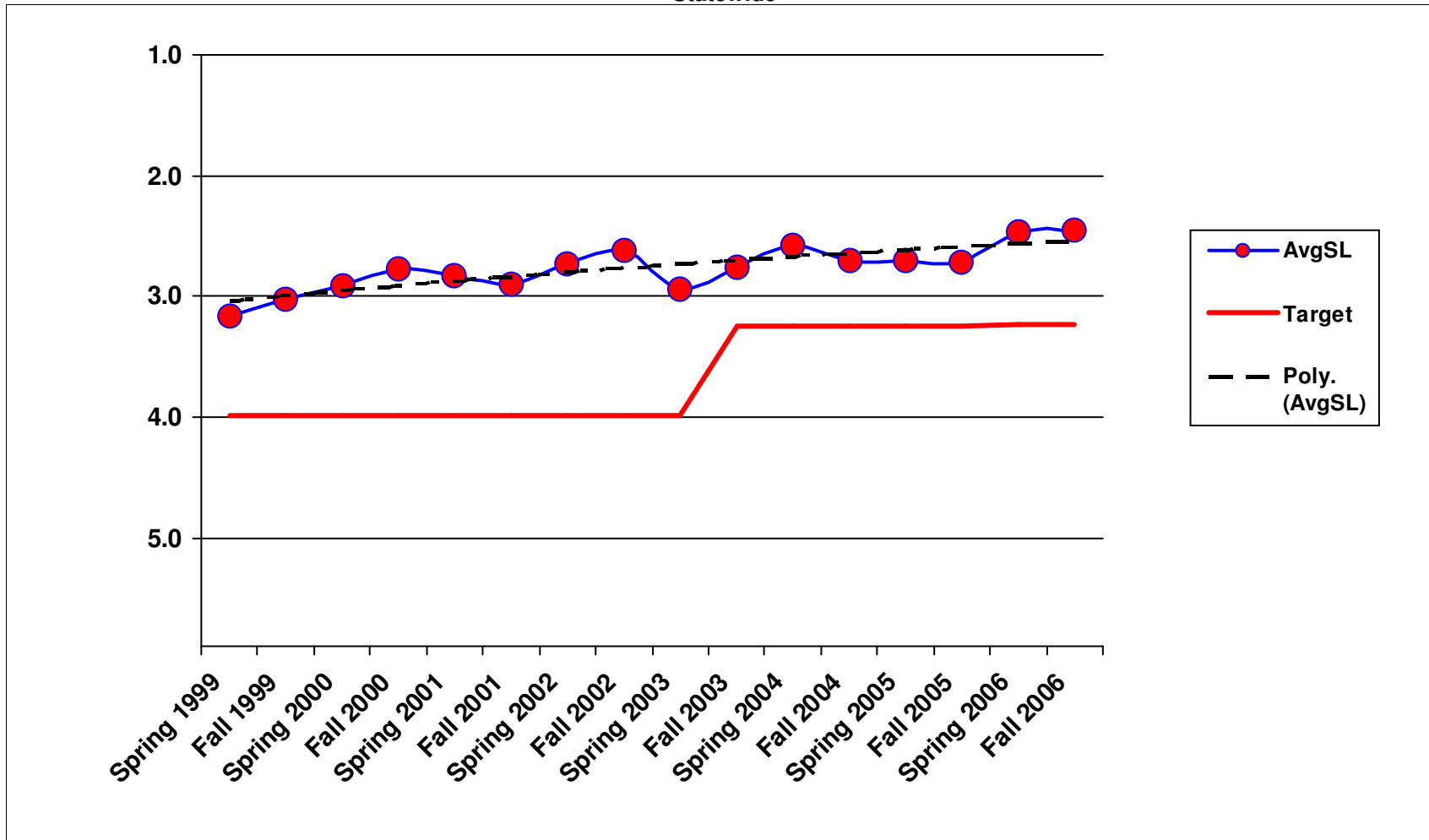
\*\*\* Revised Performance measure with revised target

**Key**

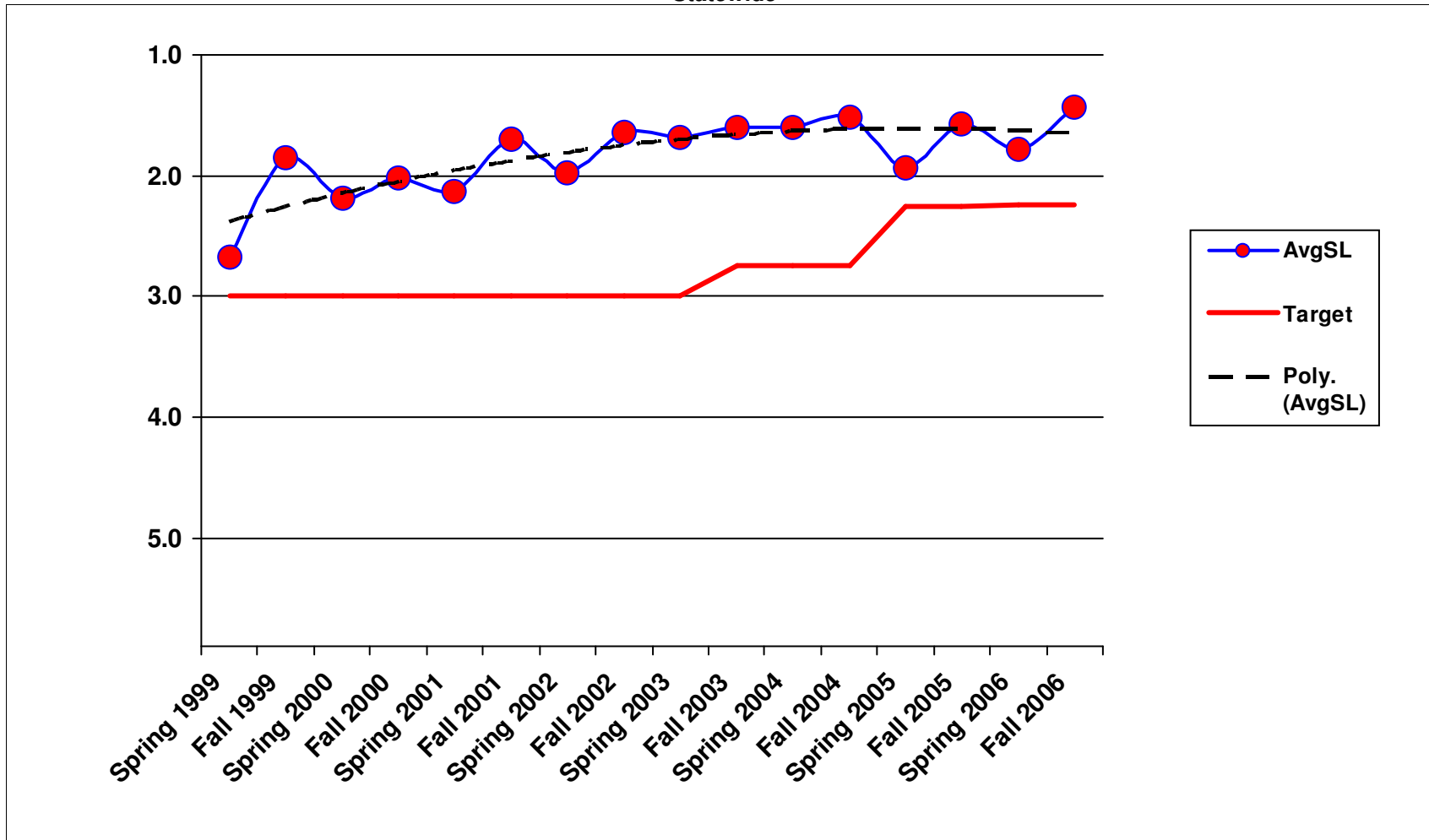
⊙ Current Law Budget Service Level Commitment

✓ Service Level Currently Delivered by WSDOT

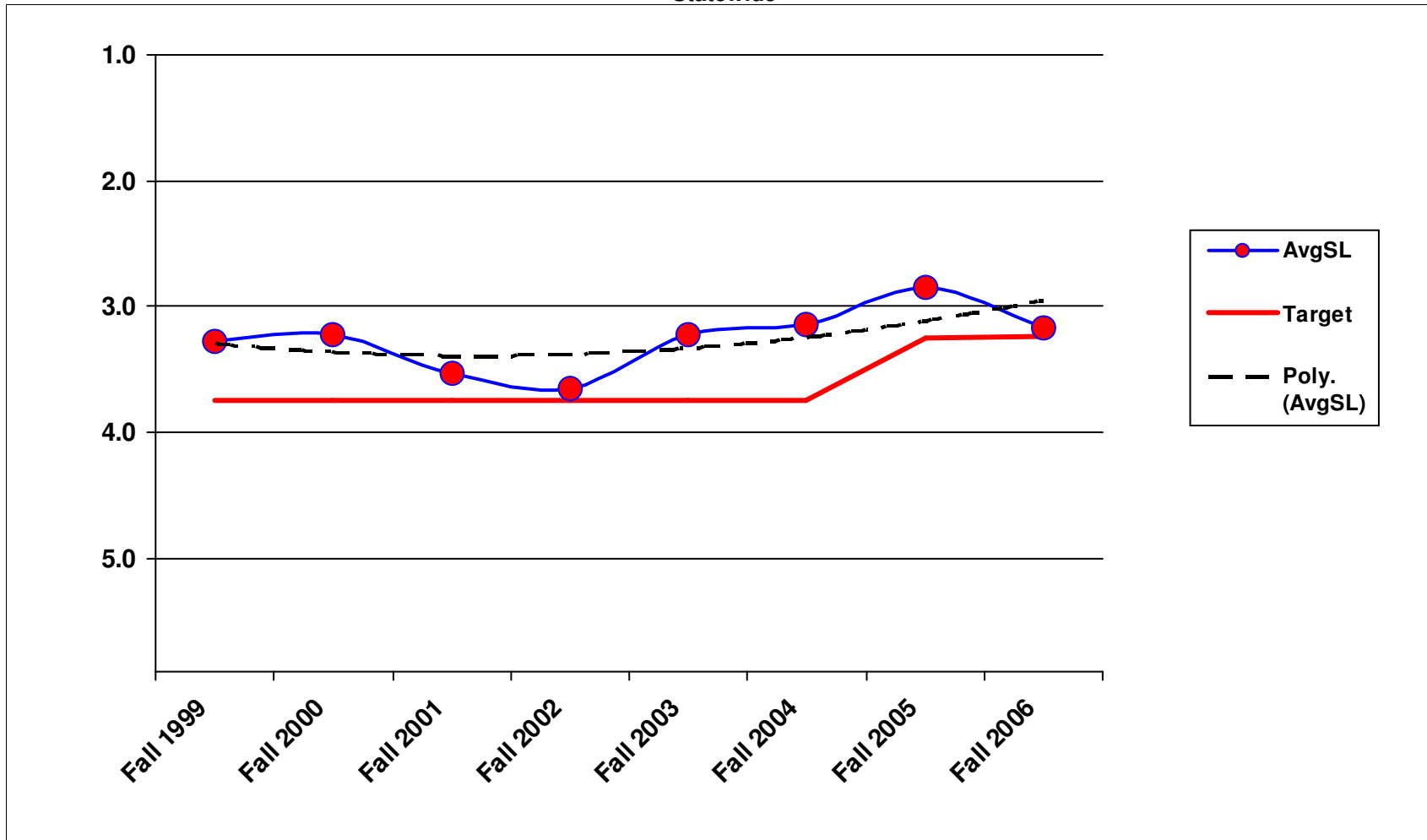
# 1A3 - Shoulder Maintenance Statewide



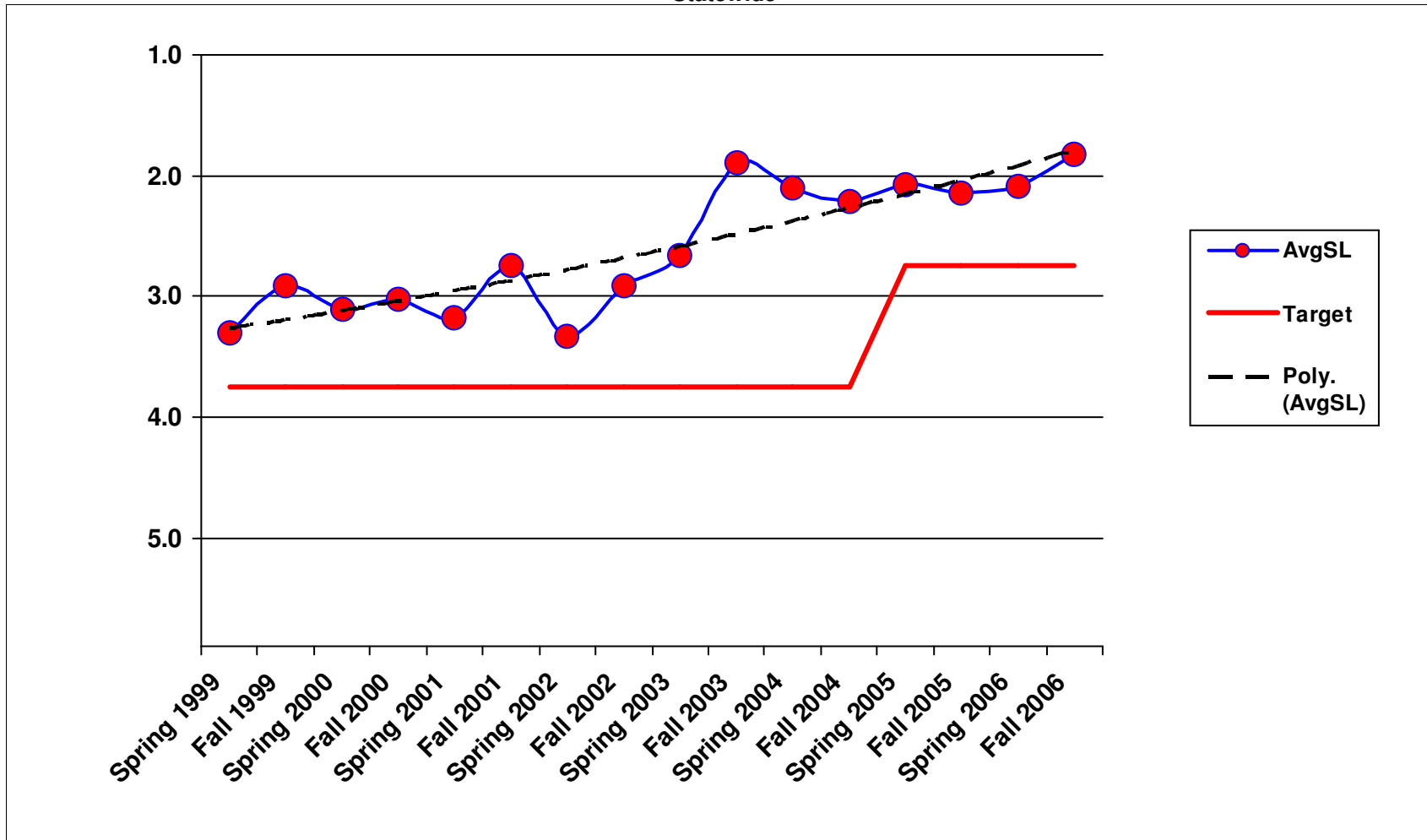
# 1A4 - Sweeping and Cleaning Statewide



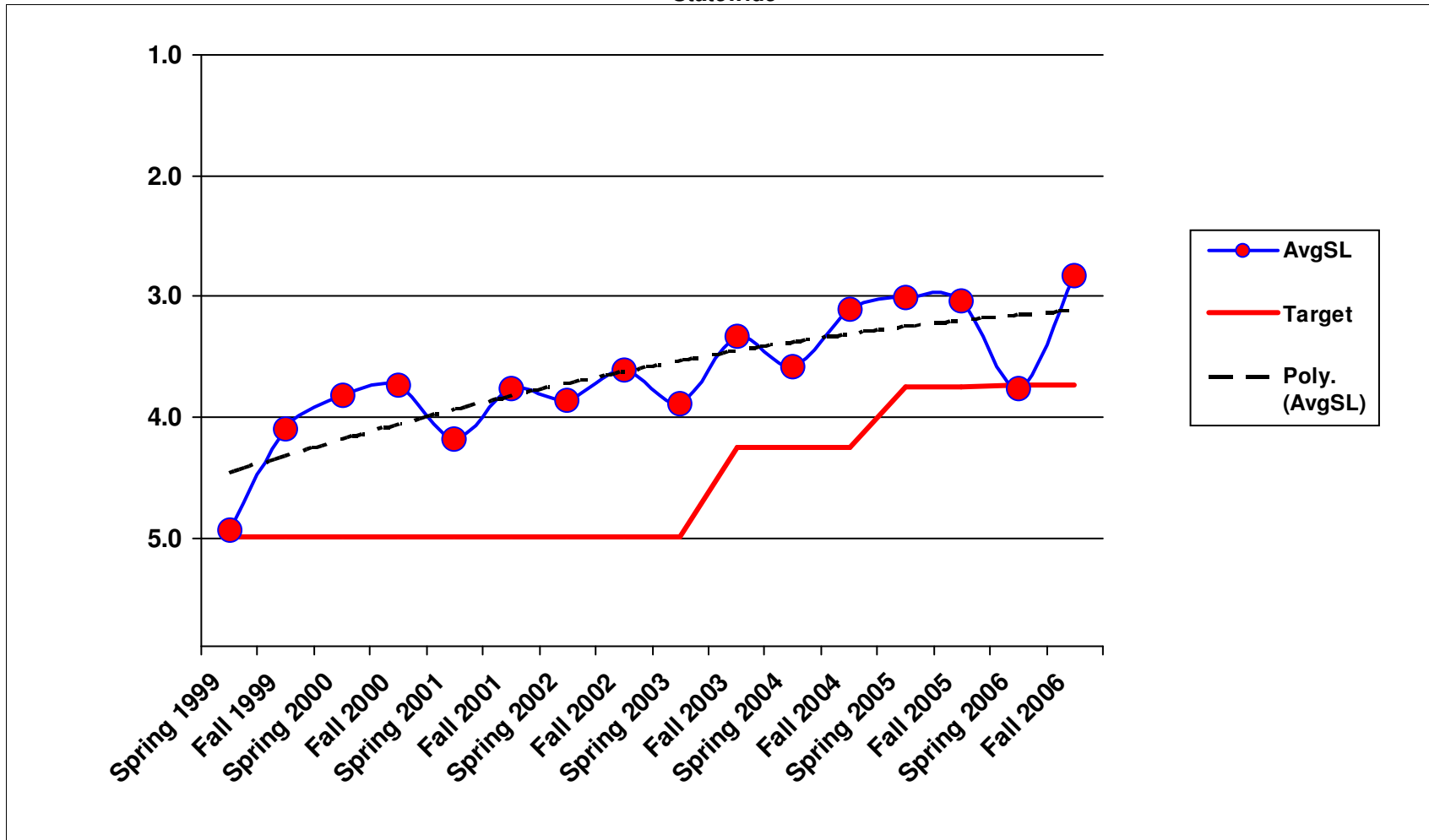
### 1B1 - Safety Patrol Statewide



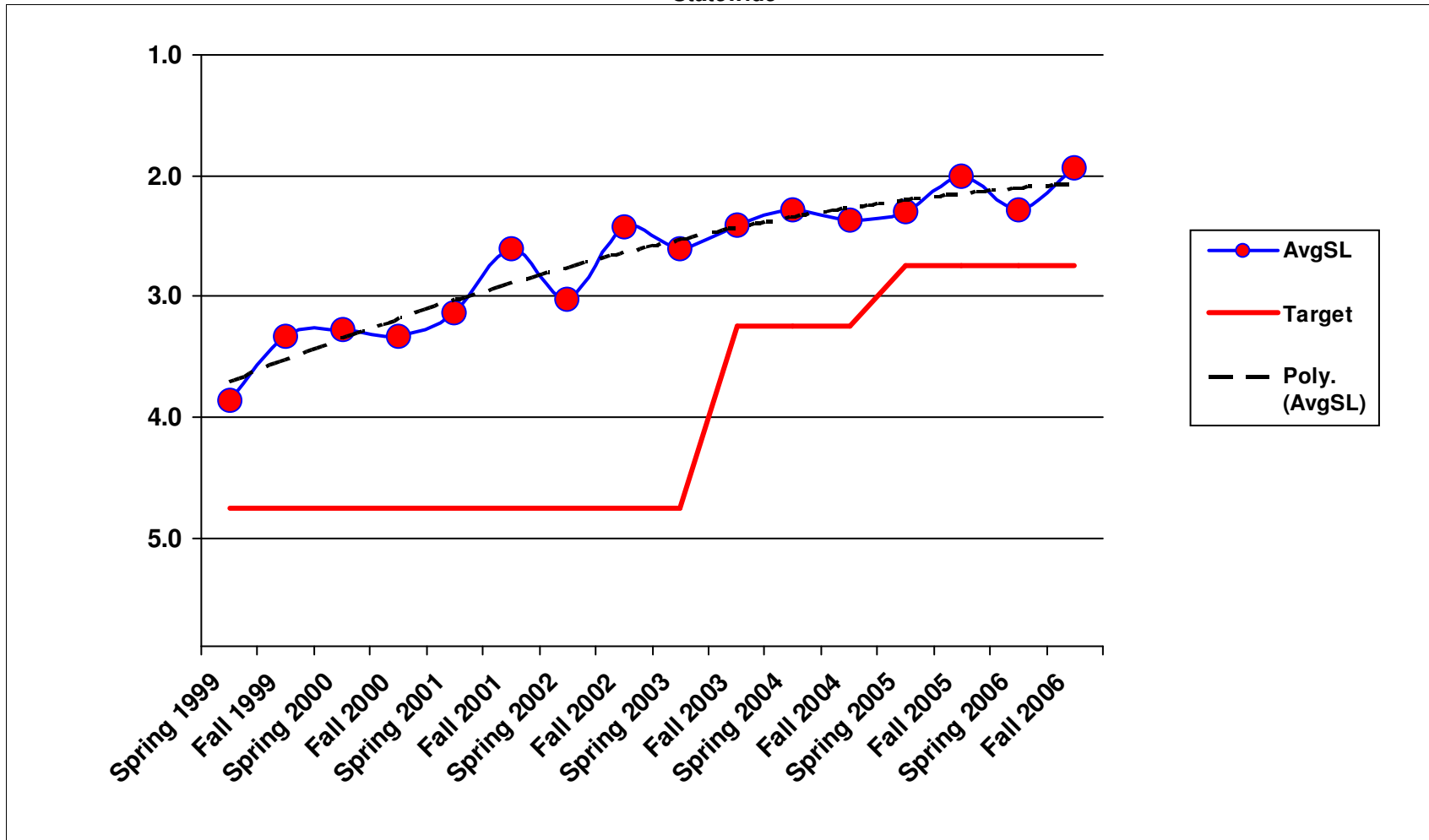
### 2A1 - Maintain Ditches Statewide



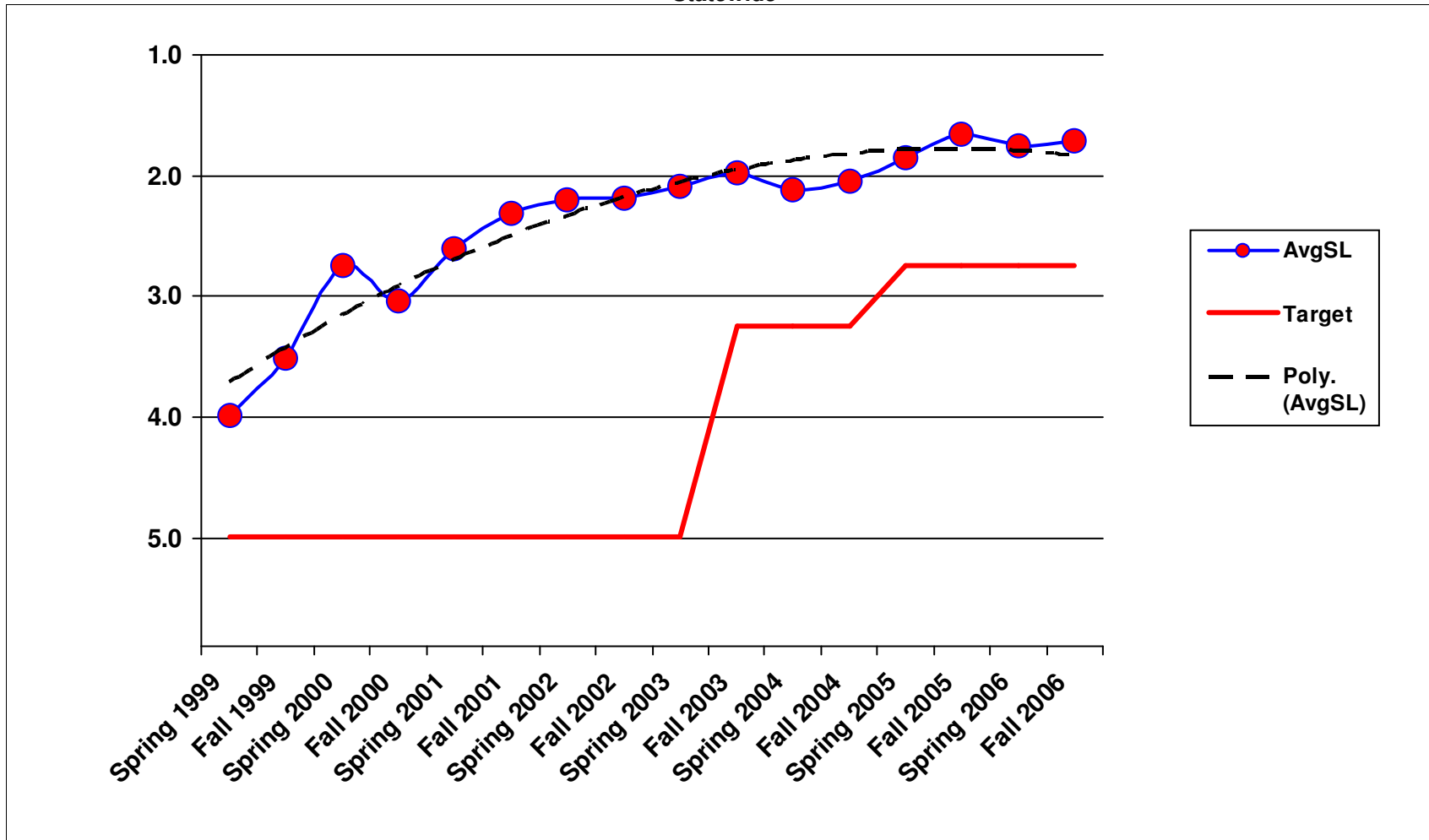
### 2A2 - Maintain Culverts Statewide



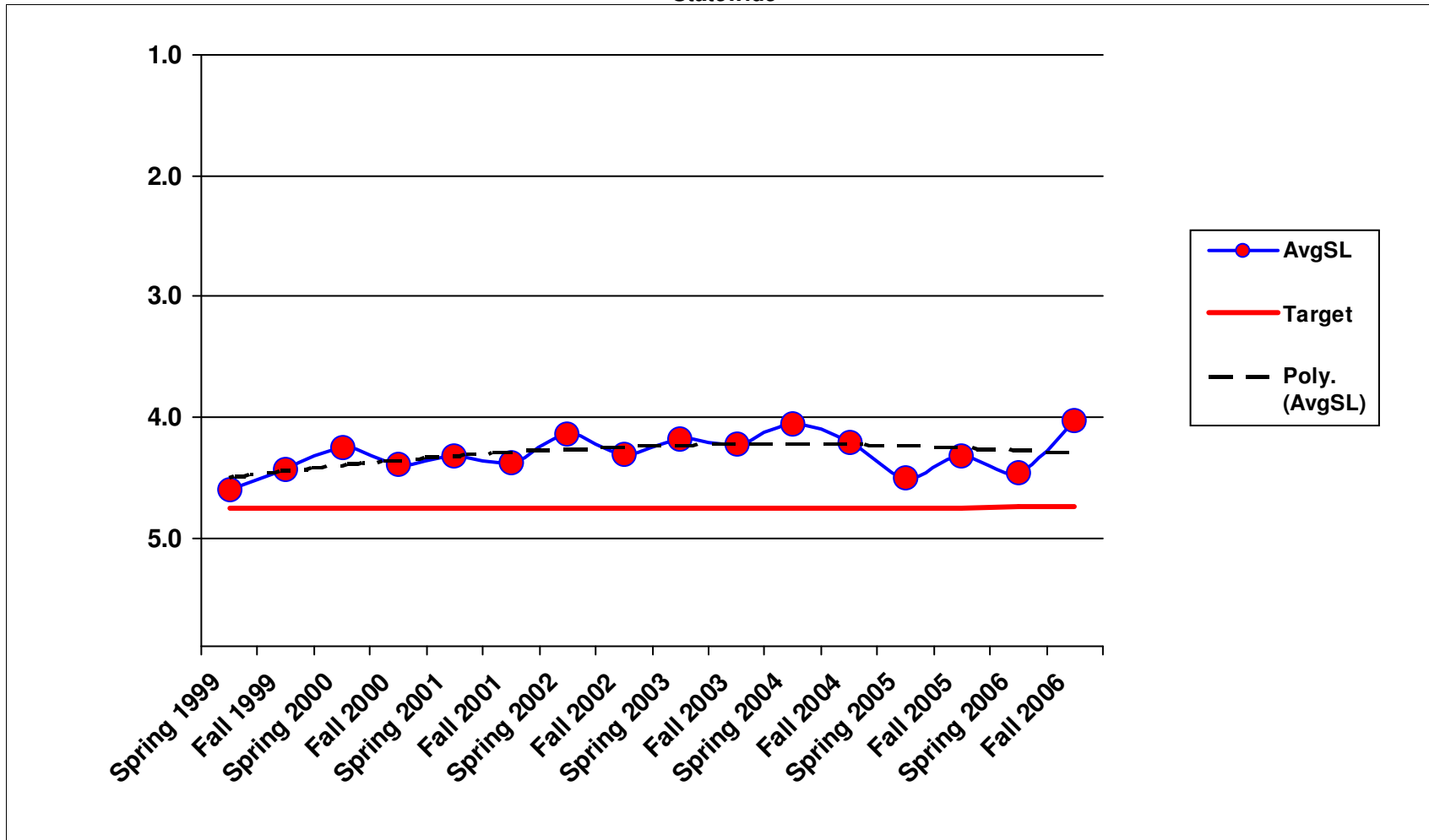
### 2A3 - Maintain Catch Basins and Inlets Statewide



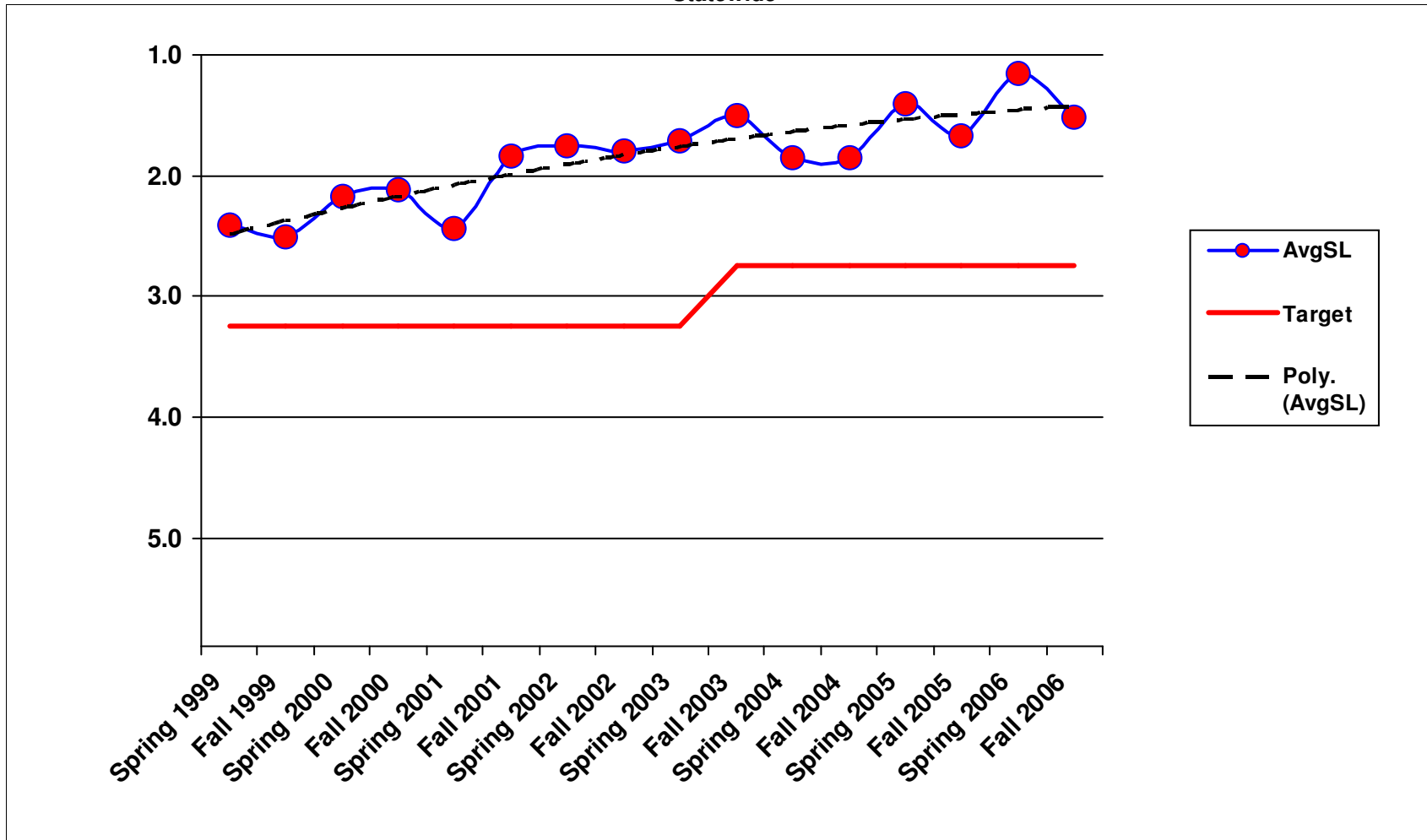
### 2A5 - Slope Repair Statewide



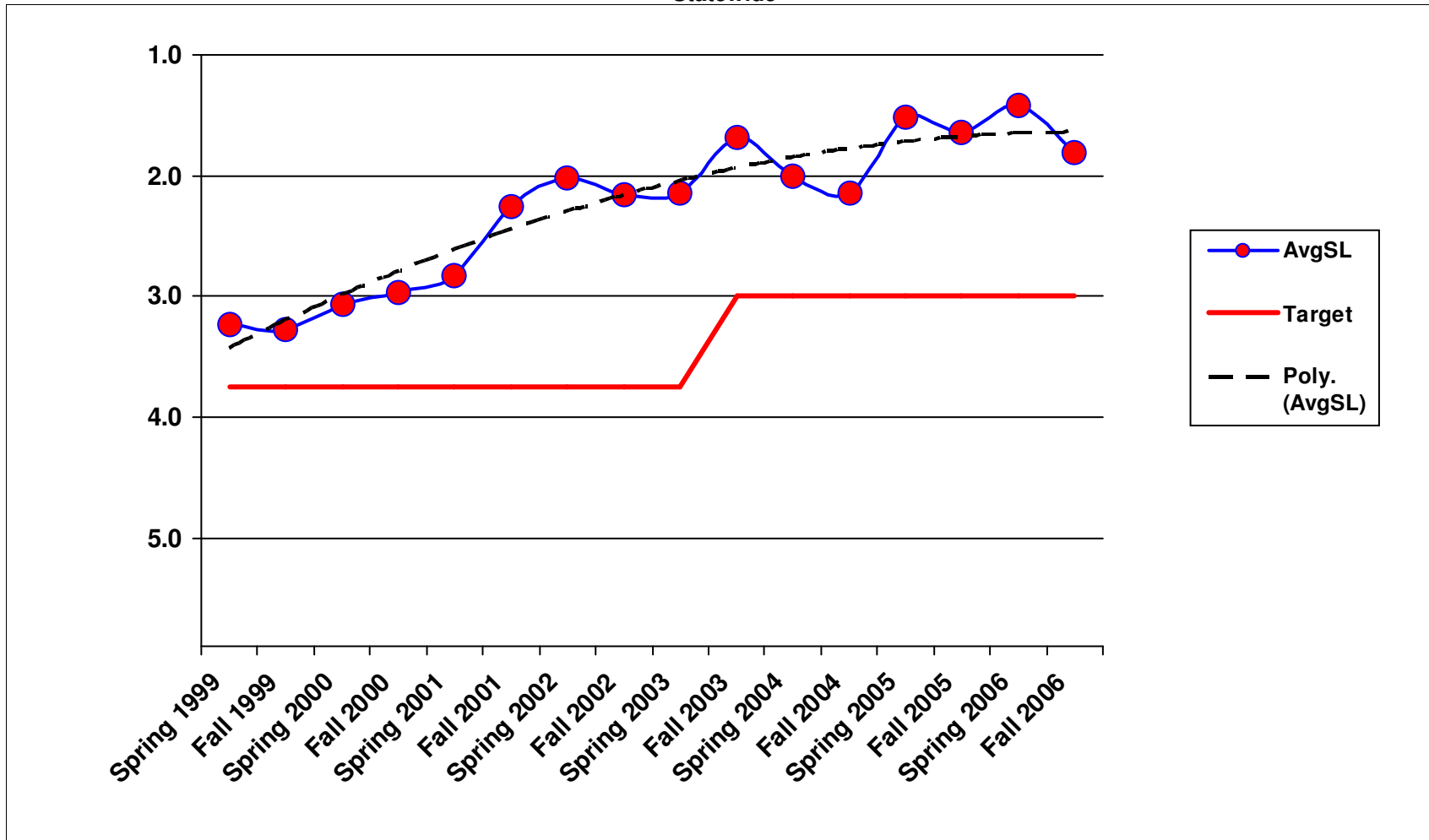
### 3A1 - Litter Pickup Statewide



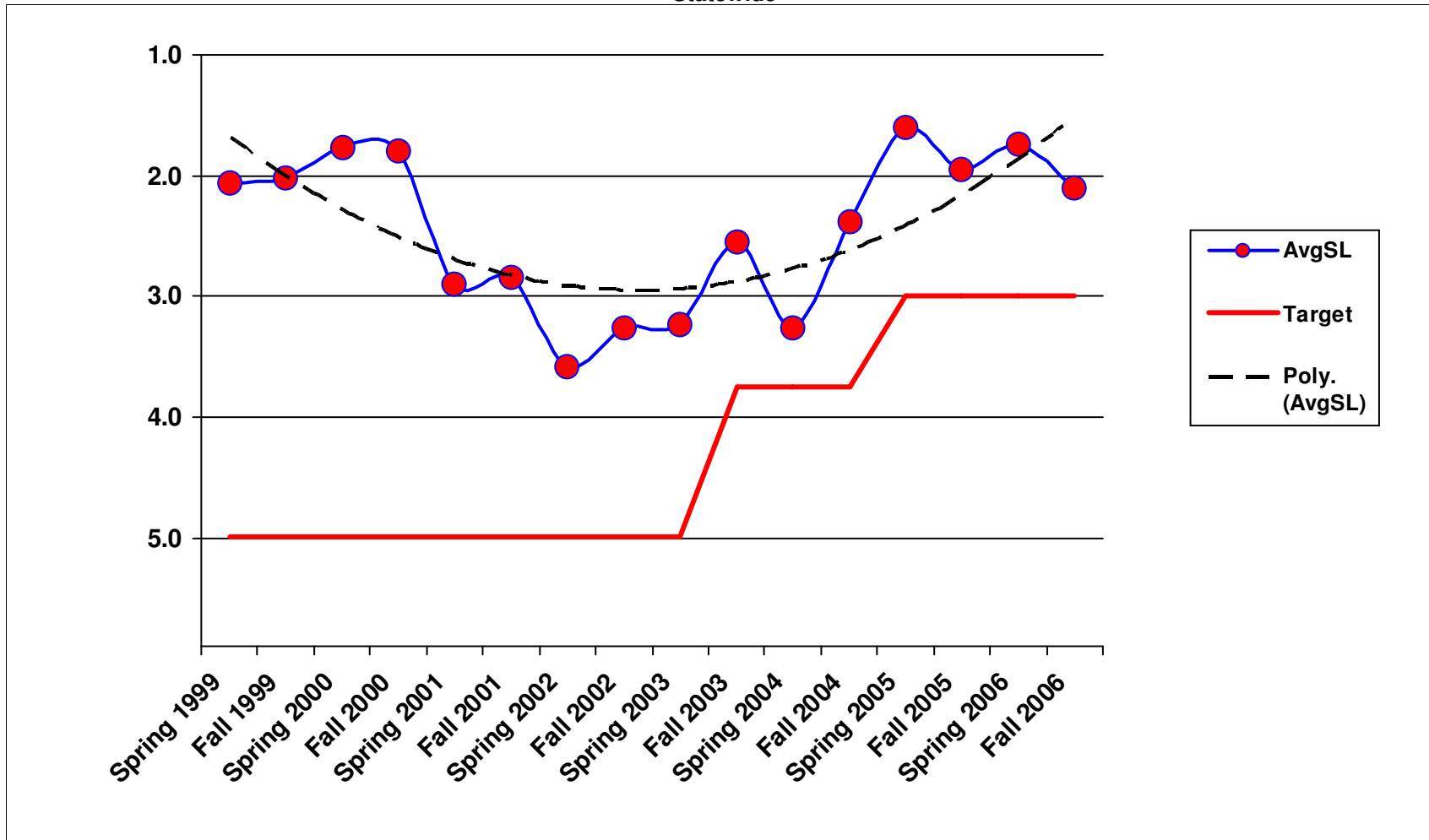
### 3A2 - Noxious Weed Control Statewide



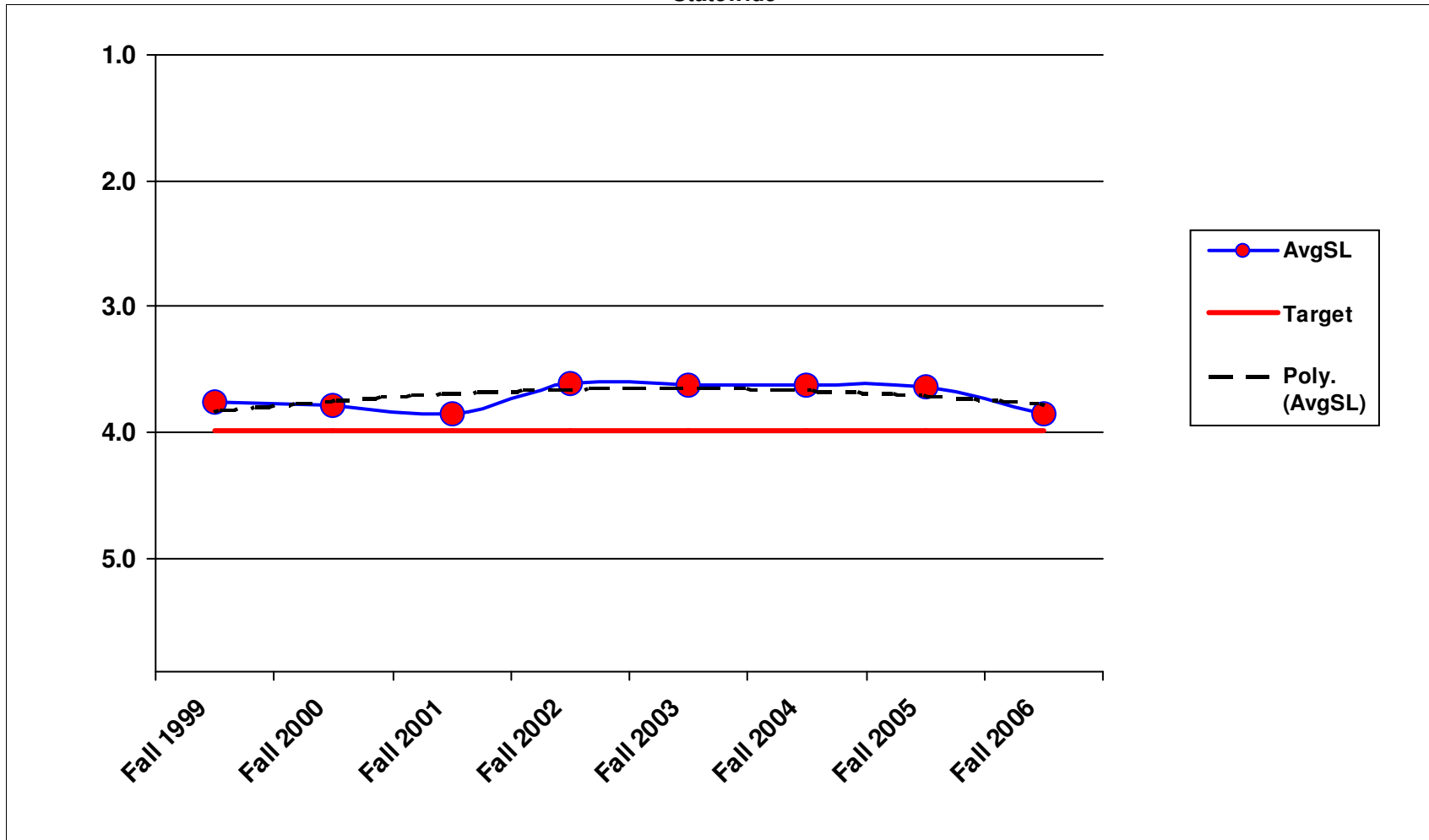
### 3A3 - Nuisance Vegetation Control Statewide



### 3A4 - Control of Vegetation Obstructions Statewide

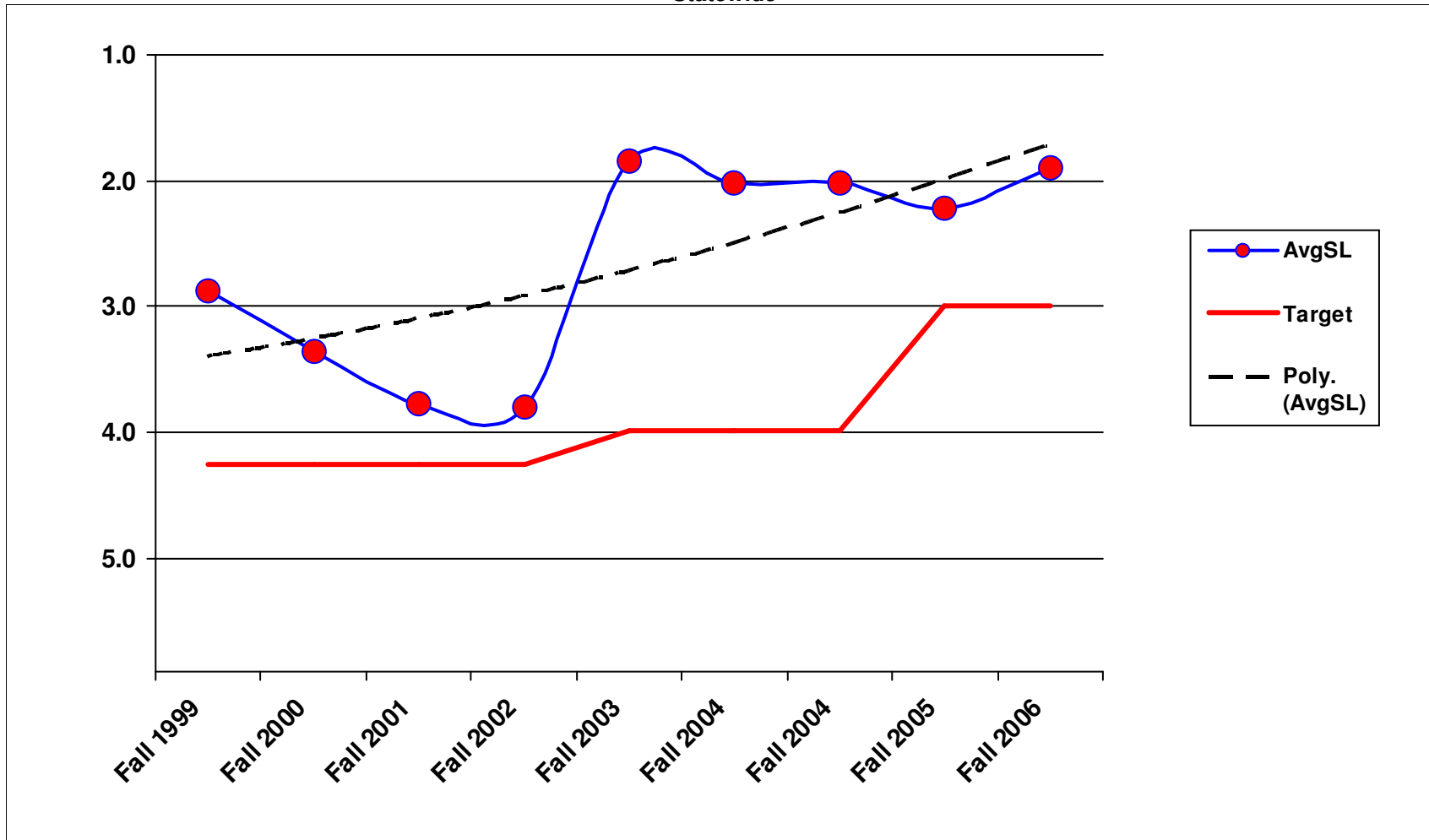


### 3A5 - Landscape Maintenance Statewide

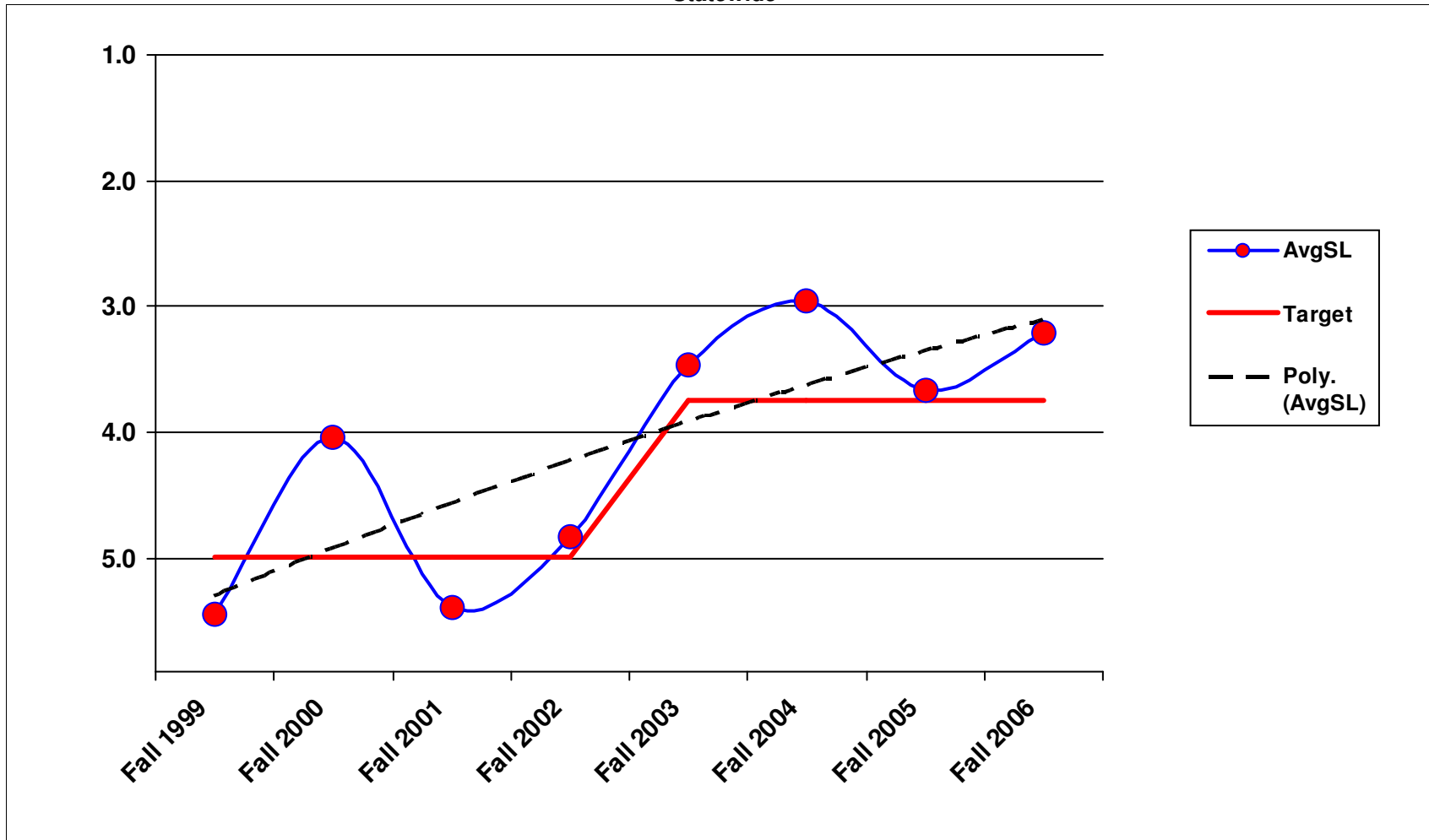


1/23/2007

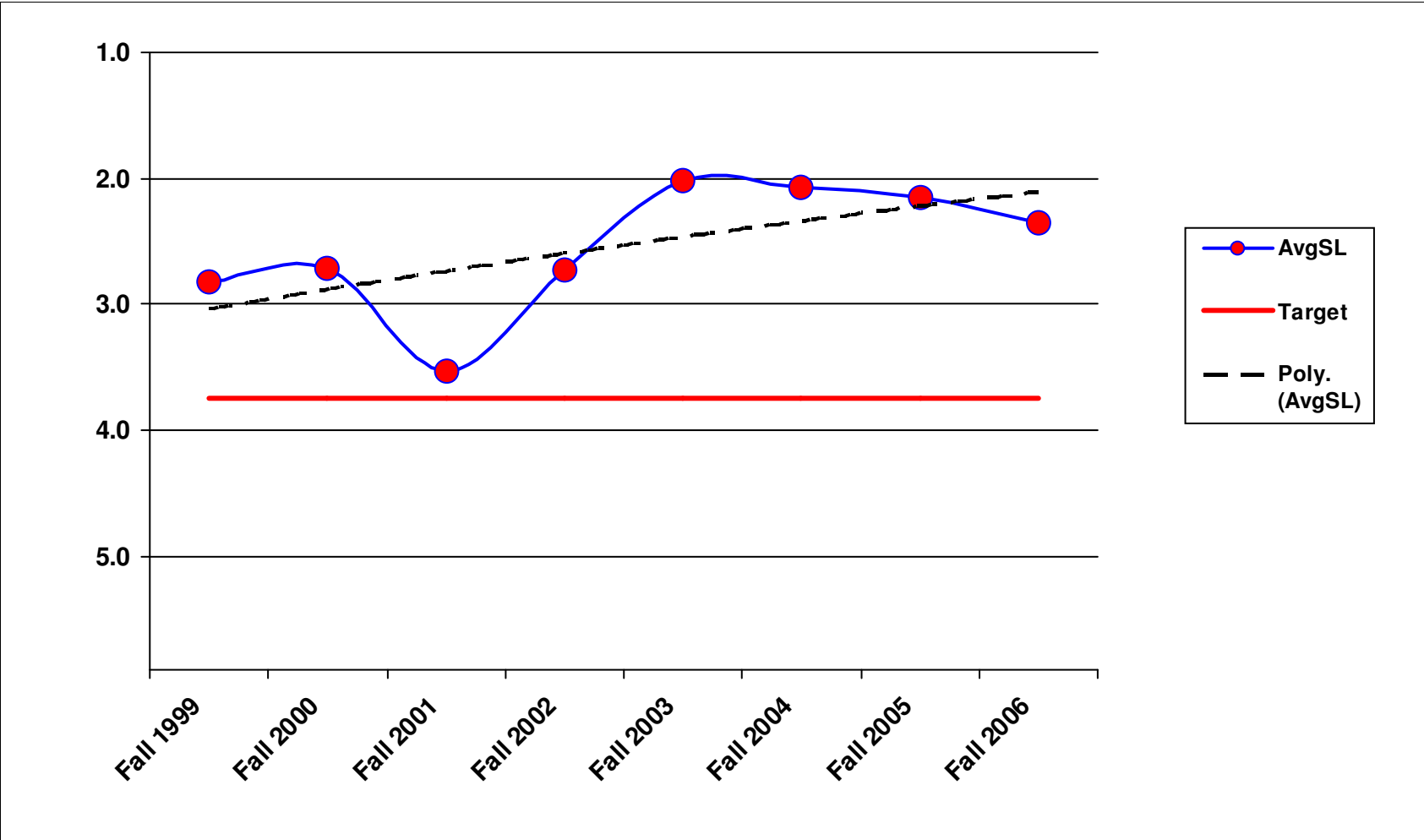
### 4A1 - Bridge Deck Repair Statewide



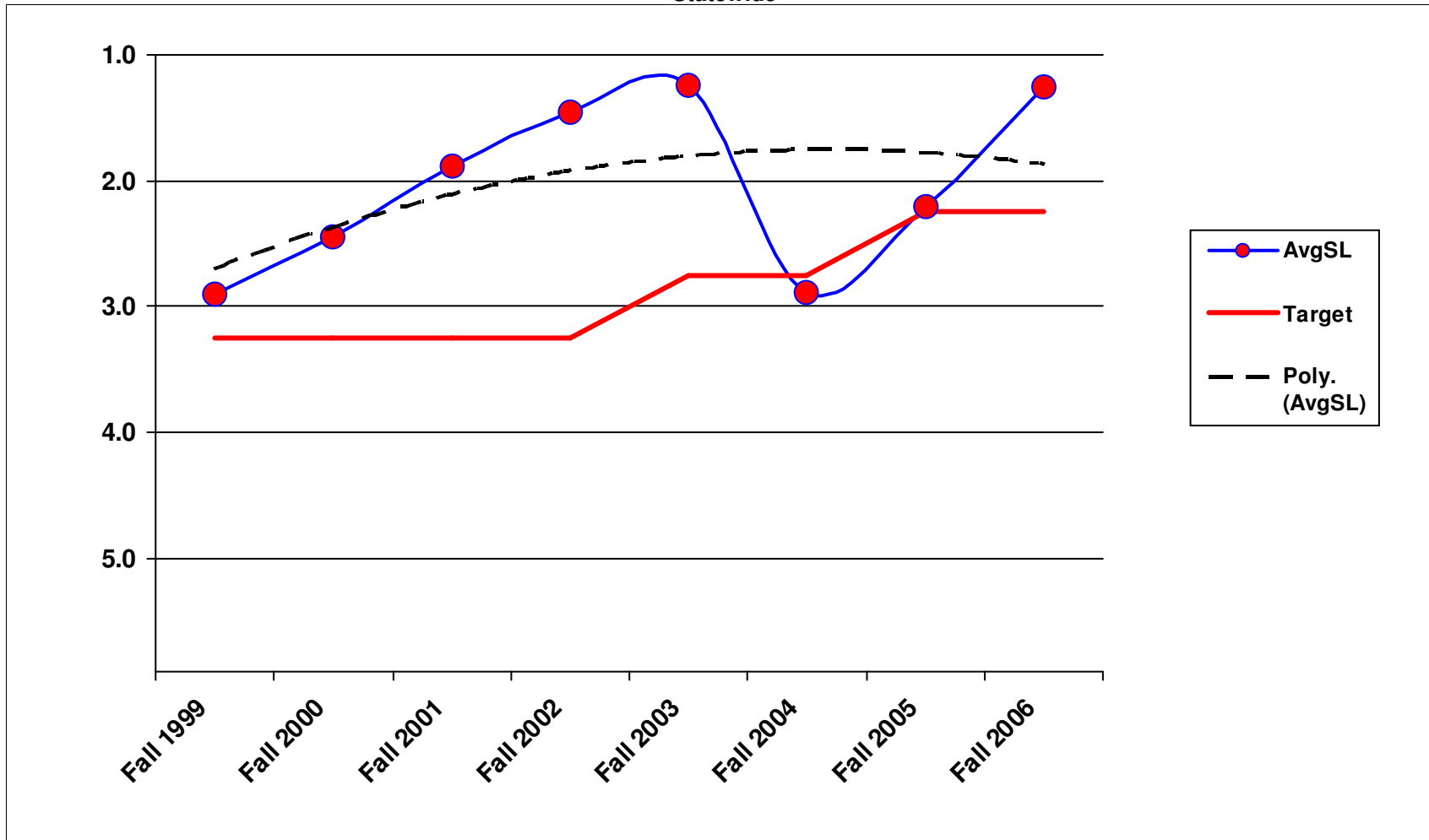
### 4A2 - Structural Bridge Repair Statewide



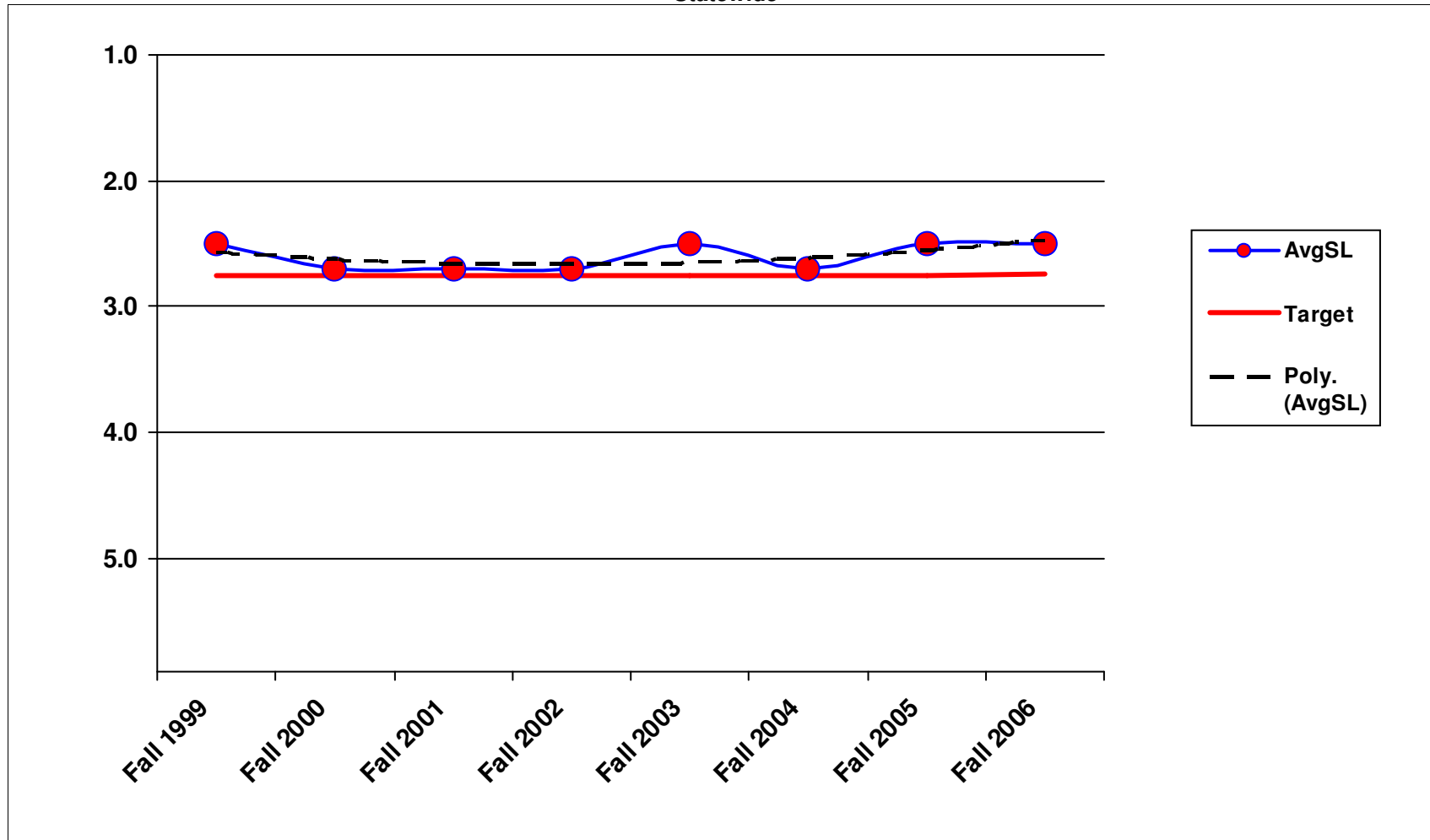
### 4A3 - Bridge Cleaning Statewide



### 4B1 - Movable and Floating Bridge Operations Statewide

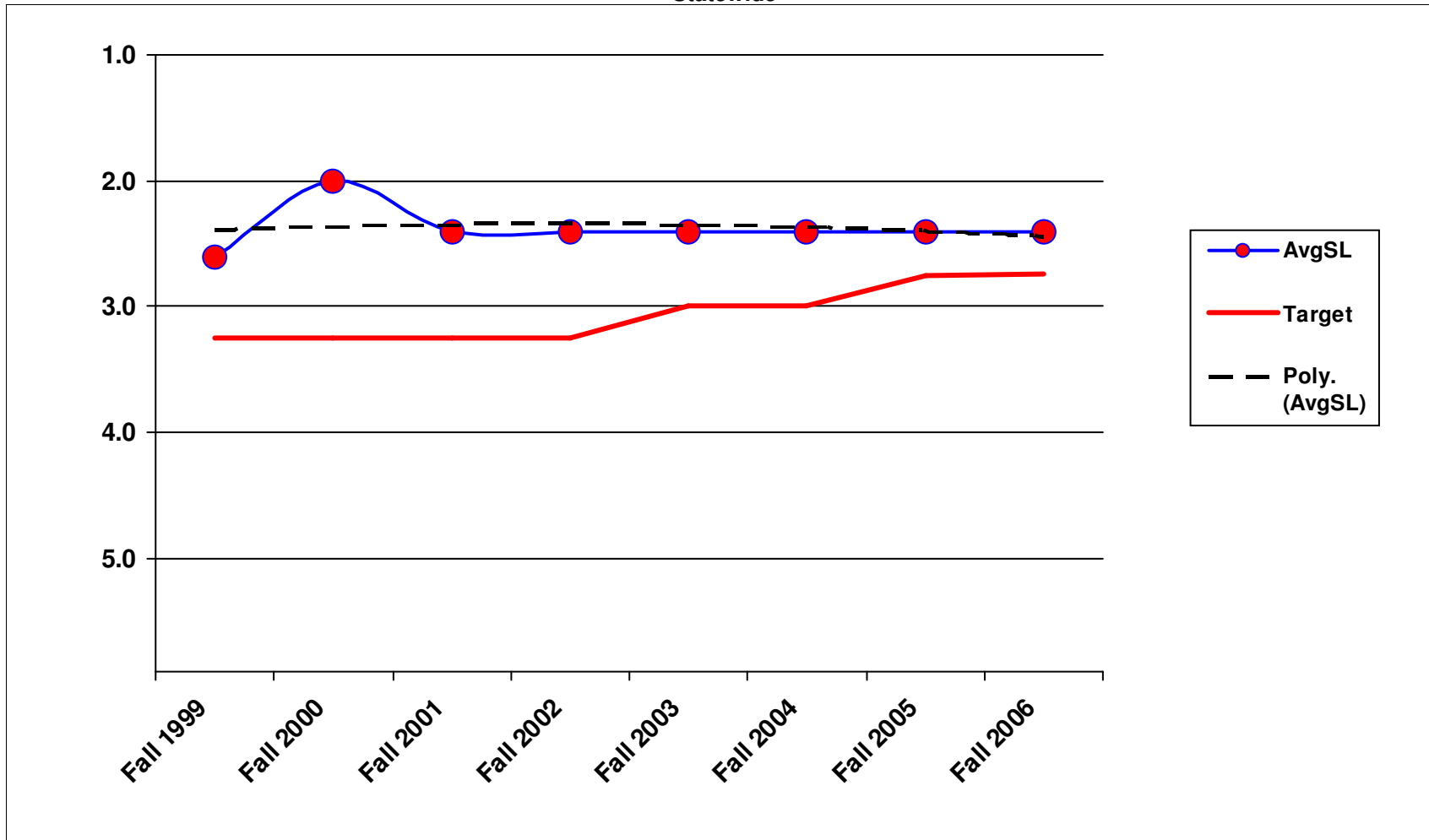


### 4B2 - Keller Ferry Operations Statewide

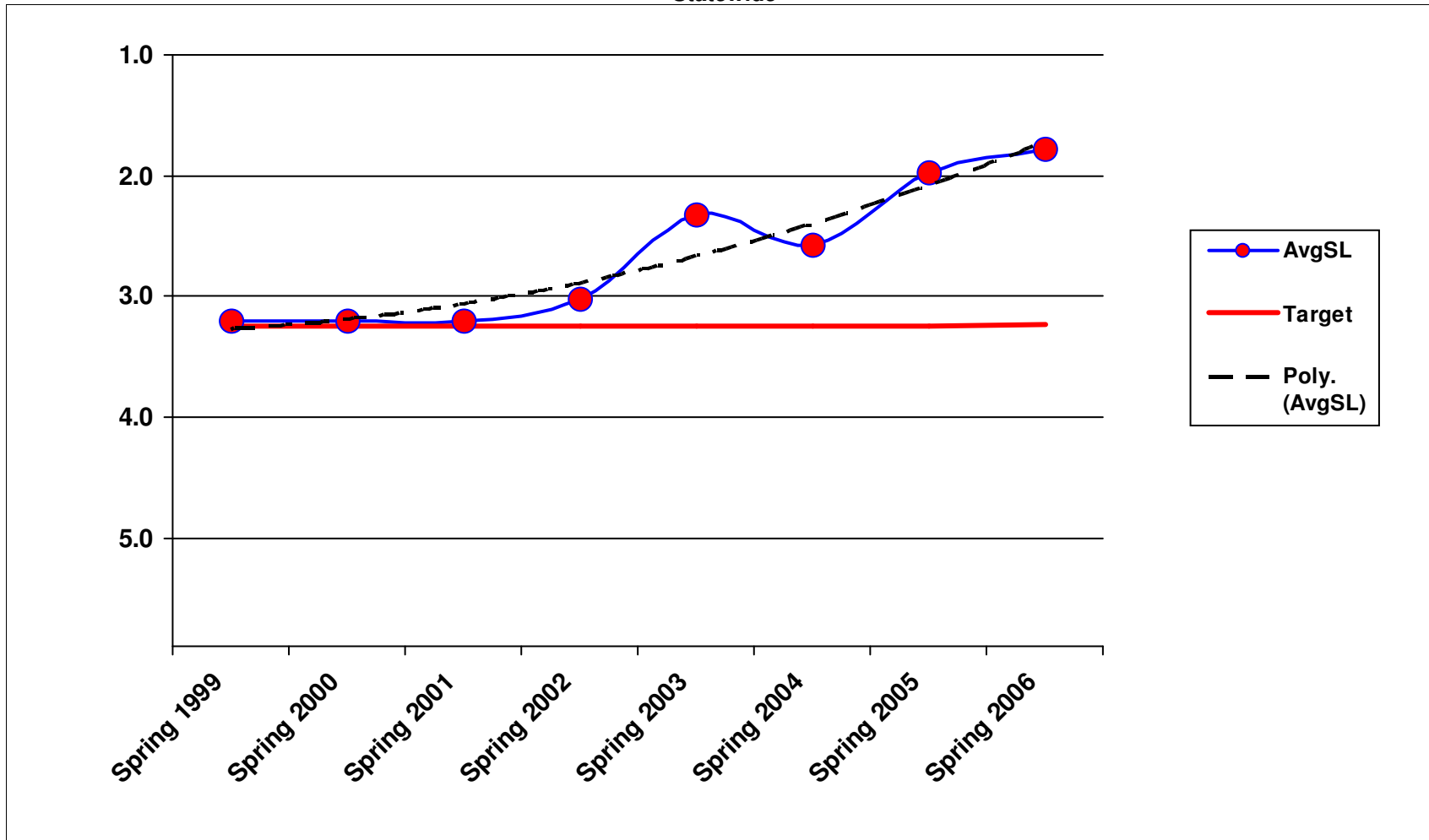


1/23/2007

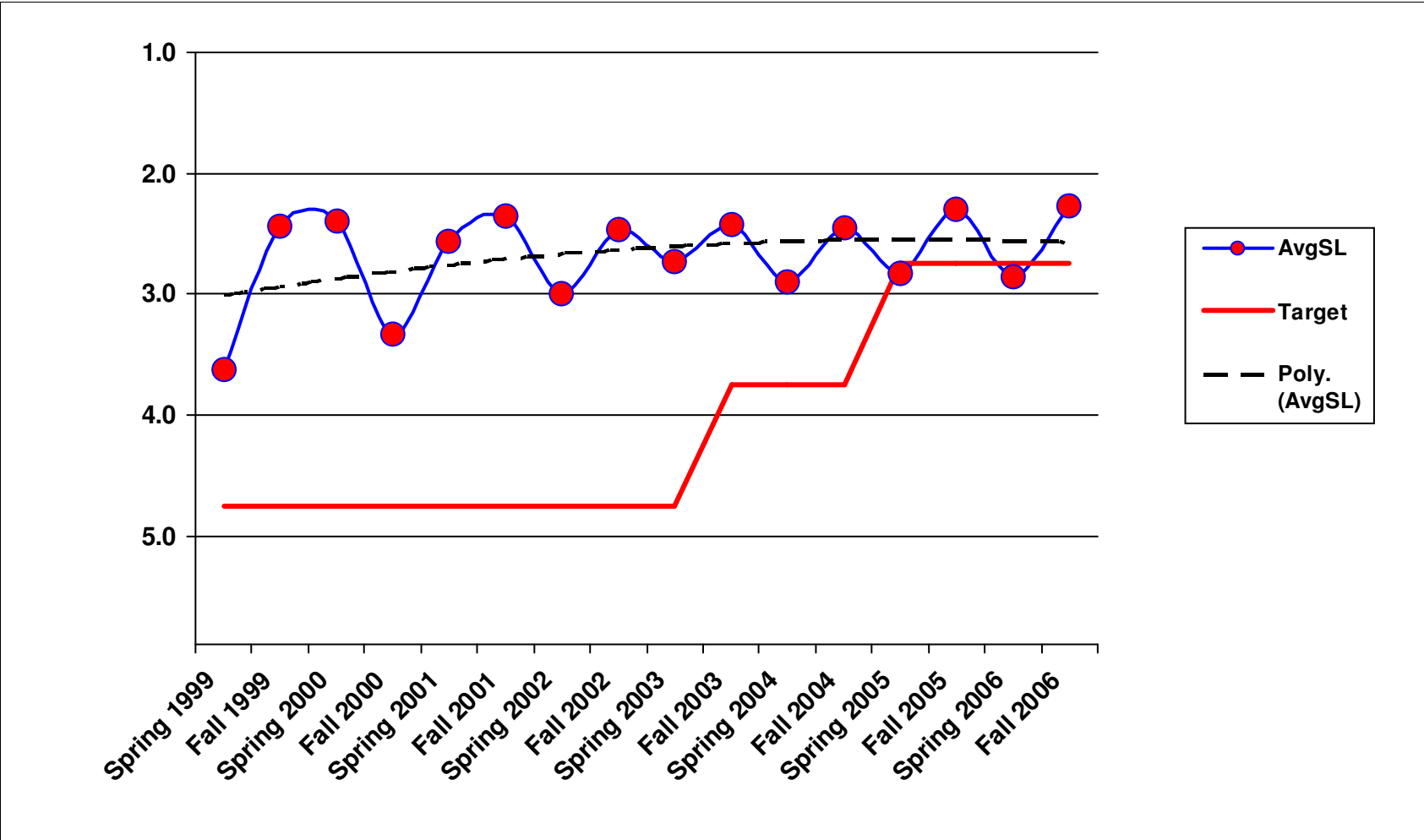
### 4B3 - Urban Tunnel Systems Statewide



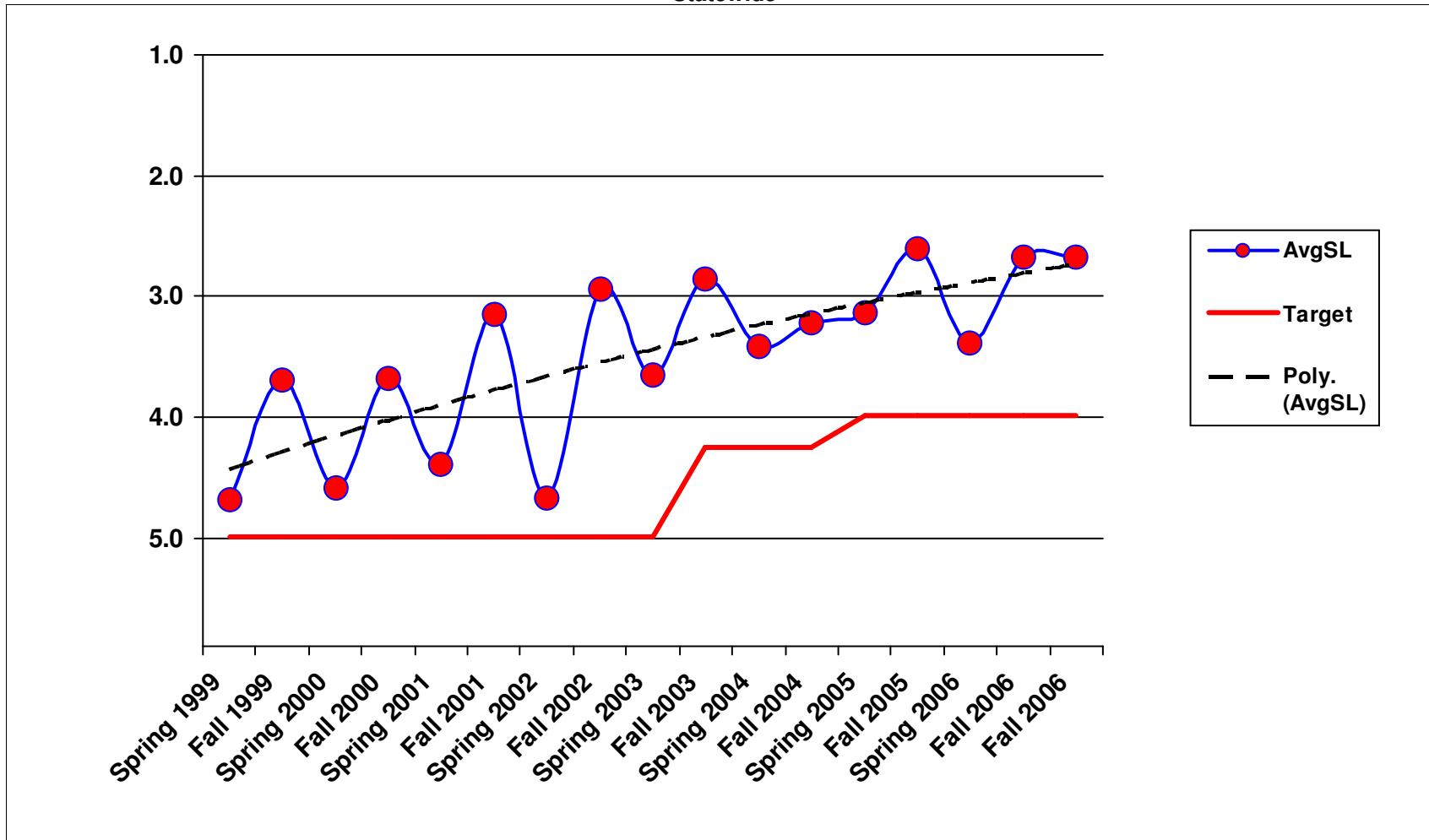
### 5B1 - Snow and Ice Control Operations Statewide



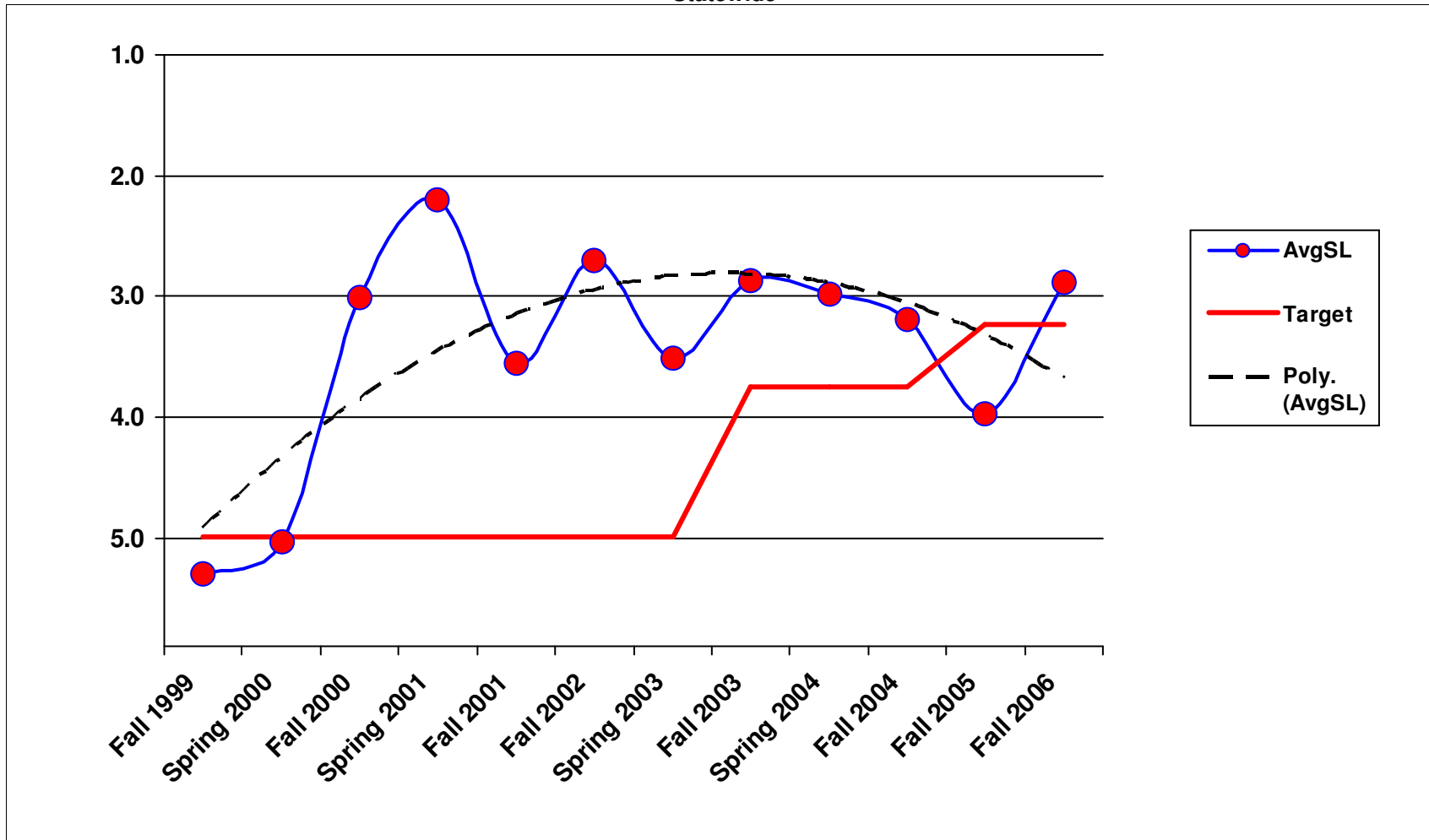
**6A2 - Raised/Depressed Pavement Marker Maintenance  
Statewide**



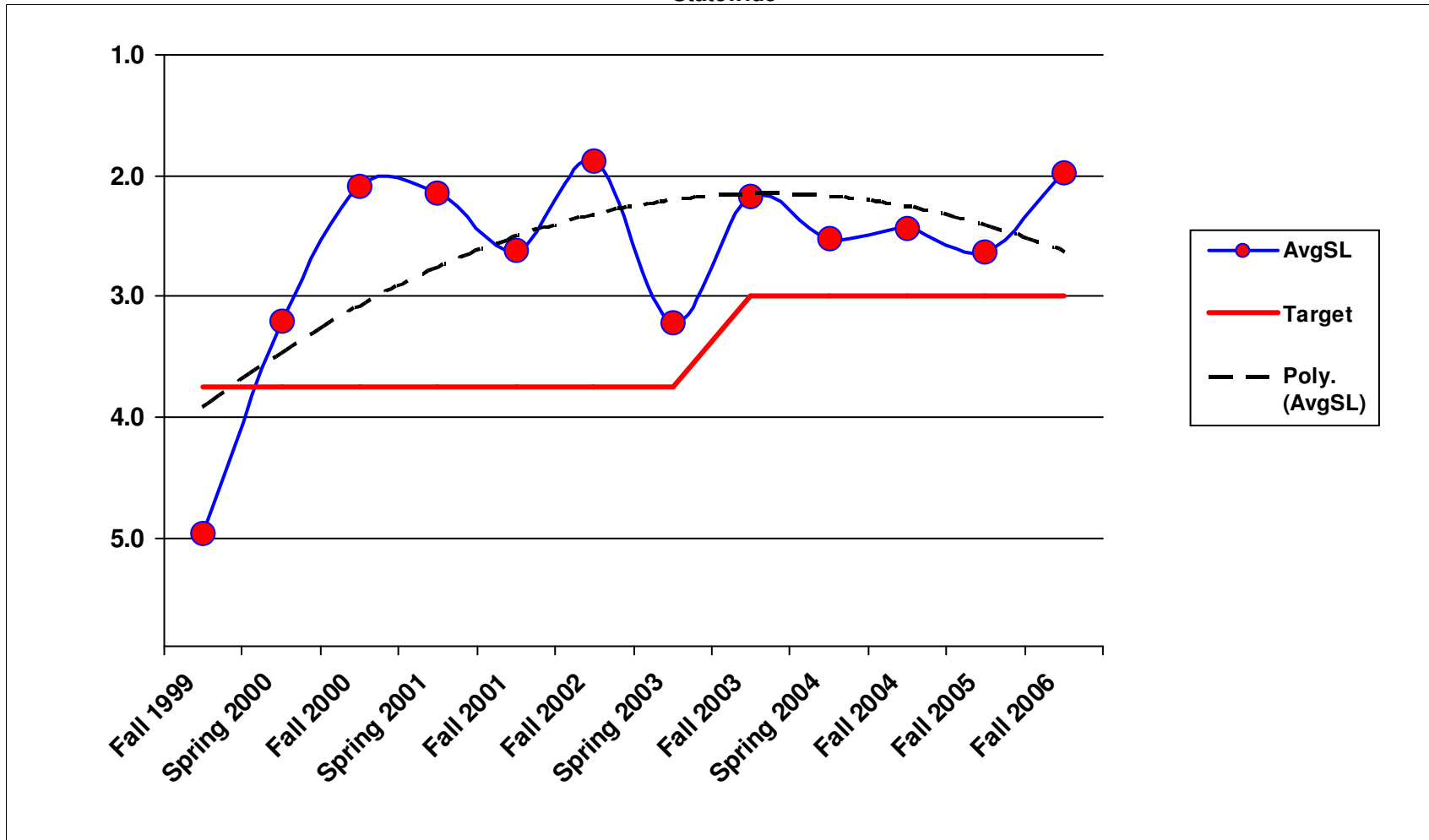
### 6A3 - Pavement Marking Maintenance Statewide



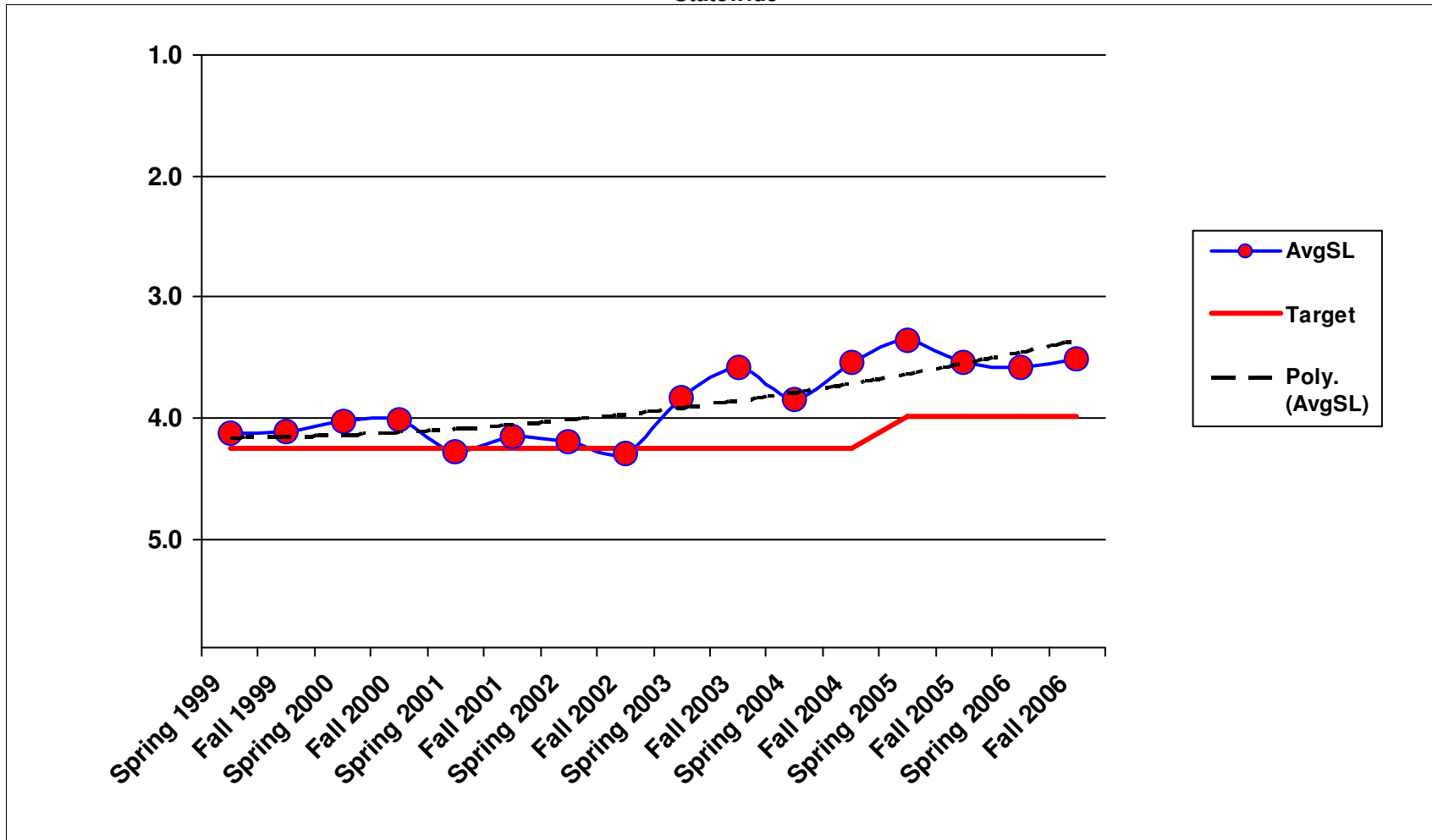
### 6A4 - Regulatory Sign Maintenance Statewide



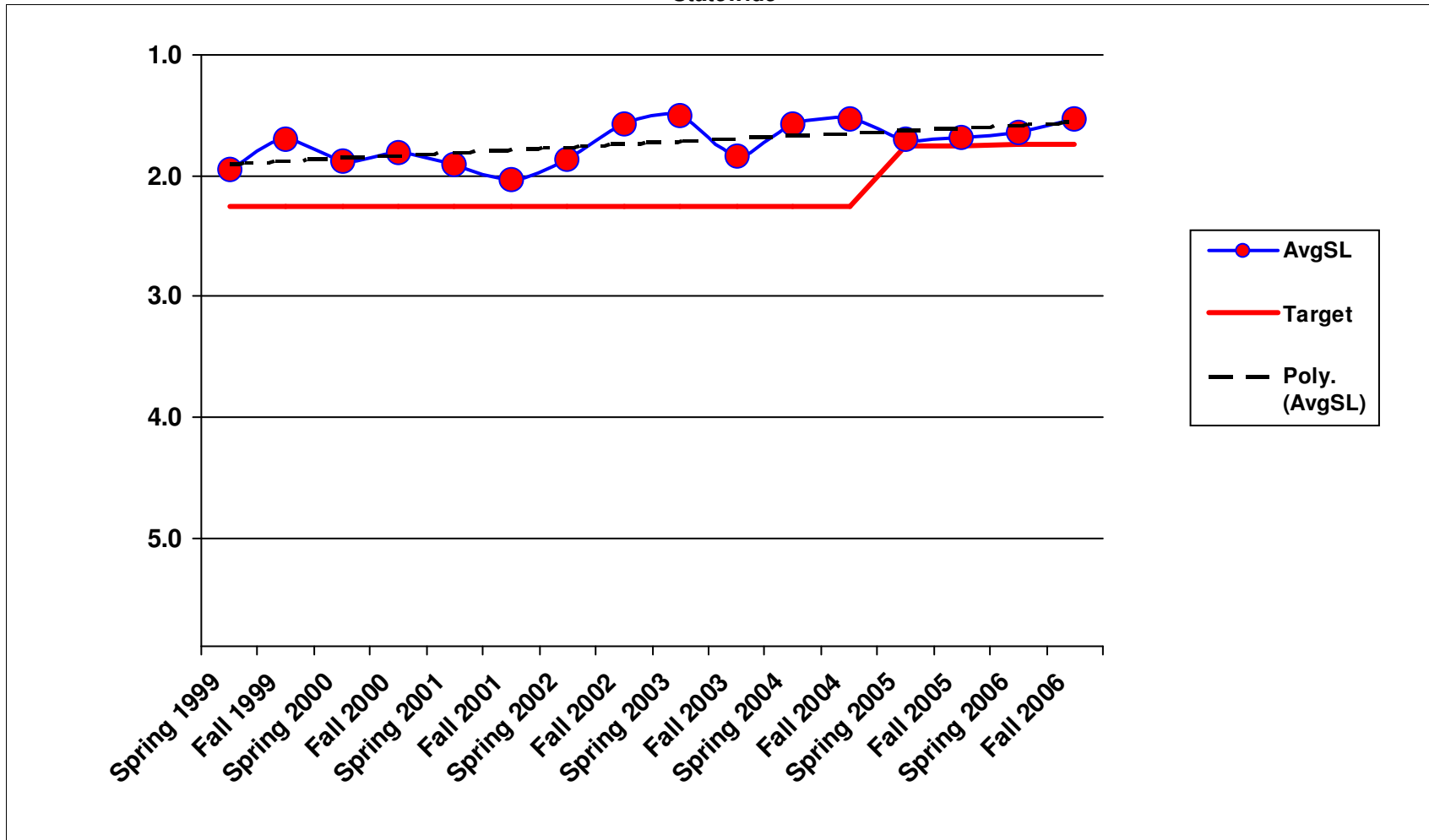
### 6A5 - Guide Sign Maintenance Statewide



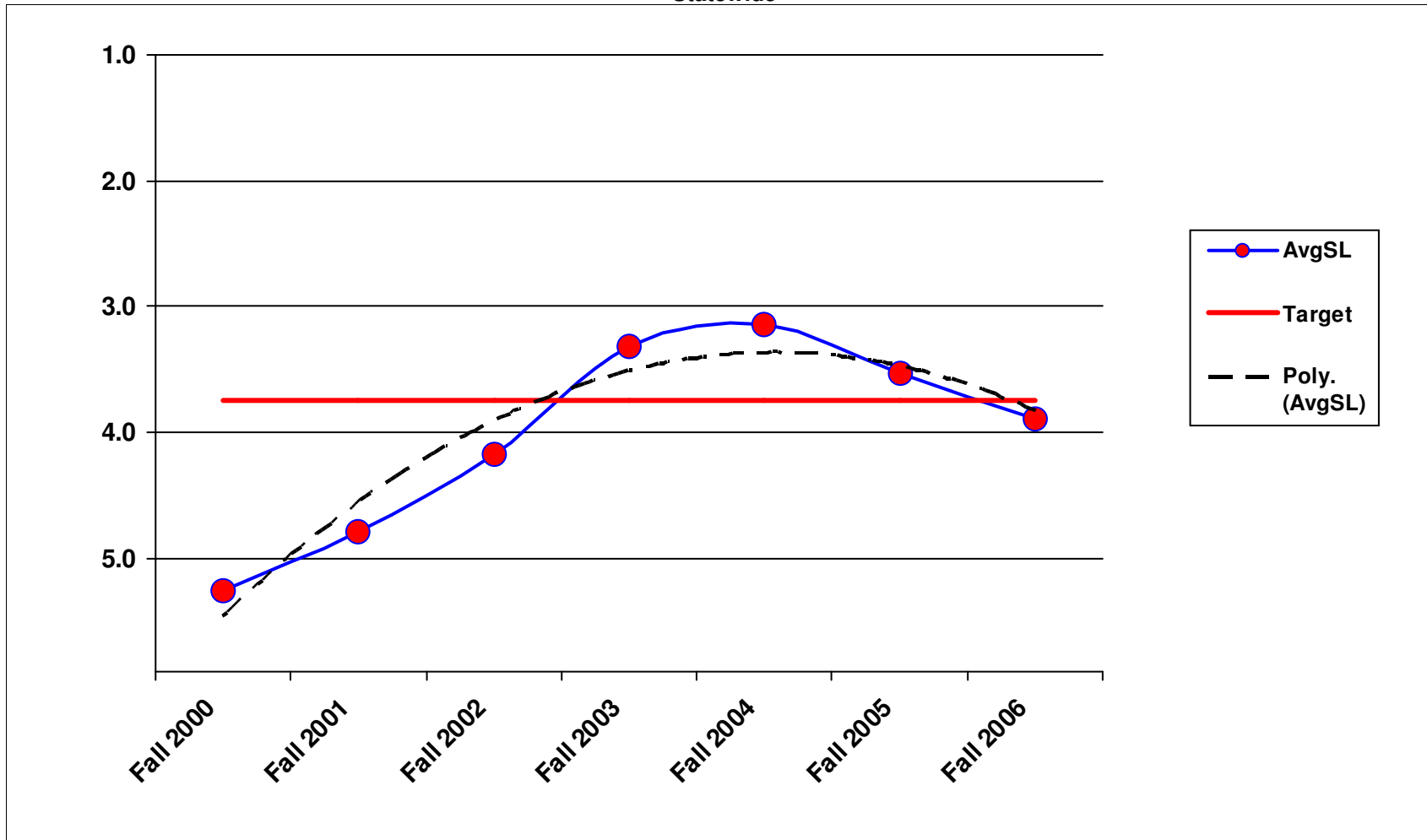
### 6A6 - Guidepost Maintenance Statewide



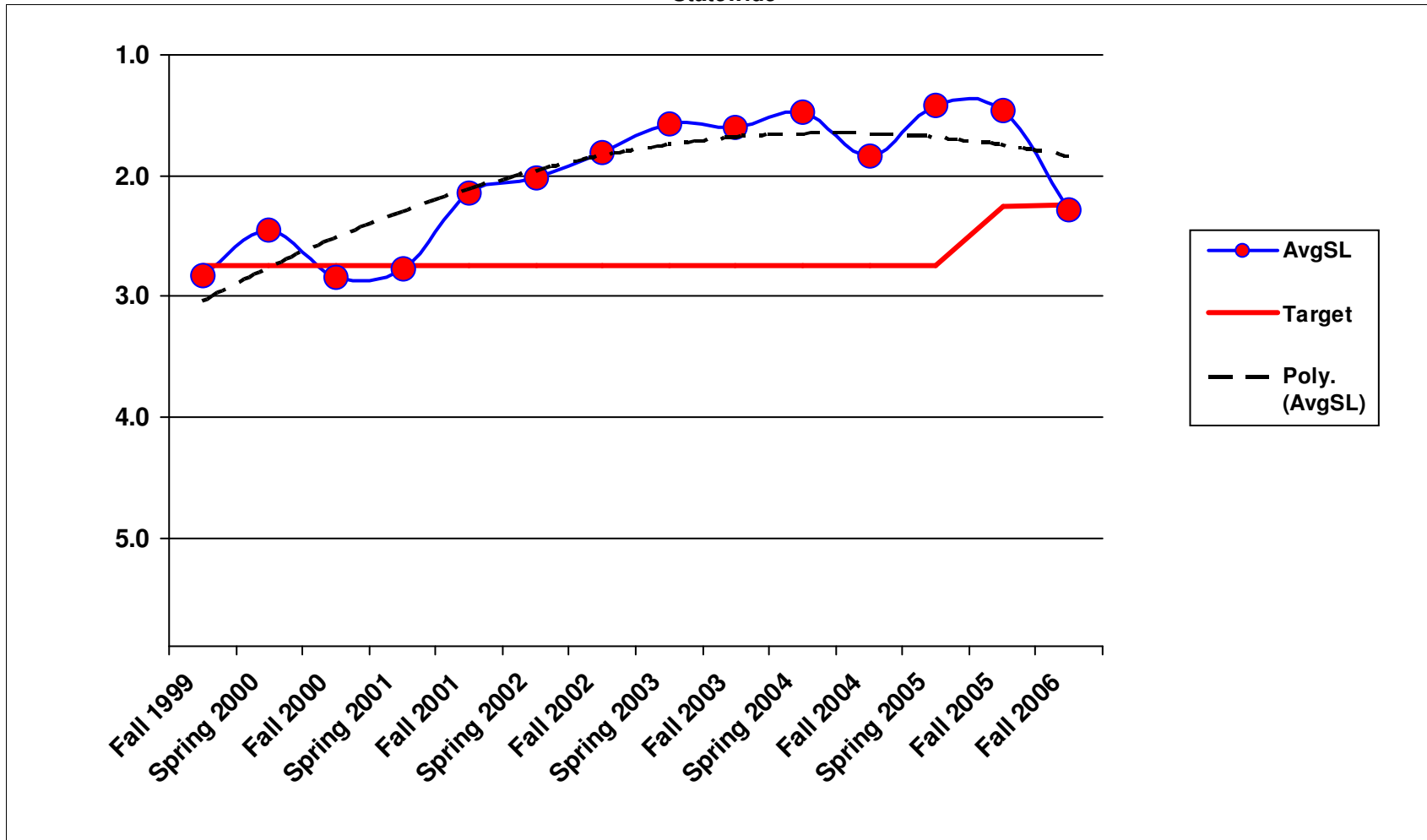
### 6A7 - Guardrail Maintenance Statewide



### 6B1 - Traffic Signal Systems Statewide

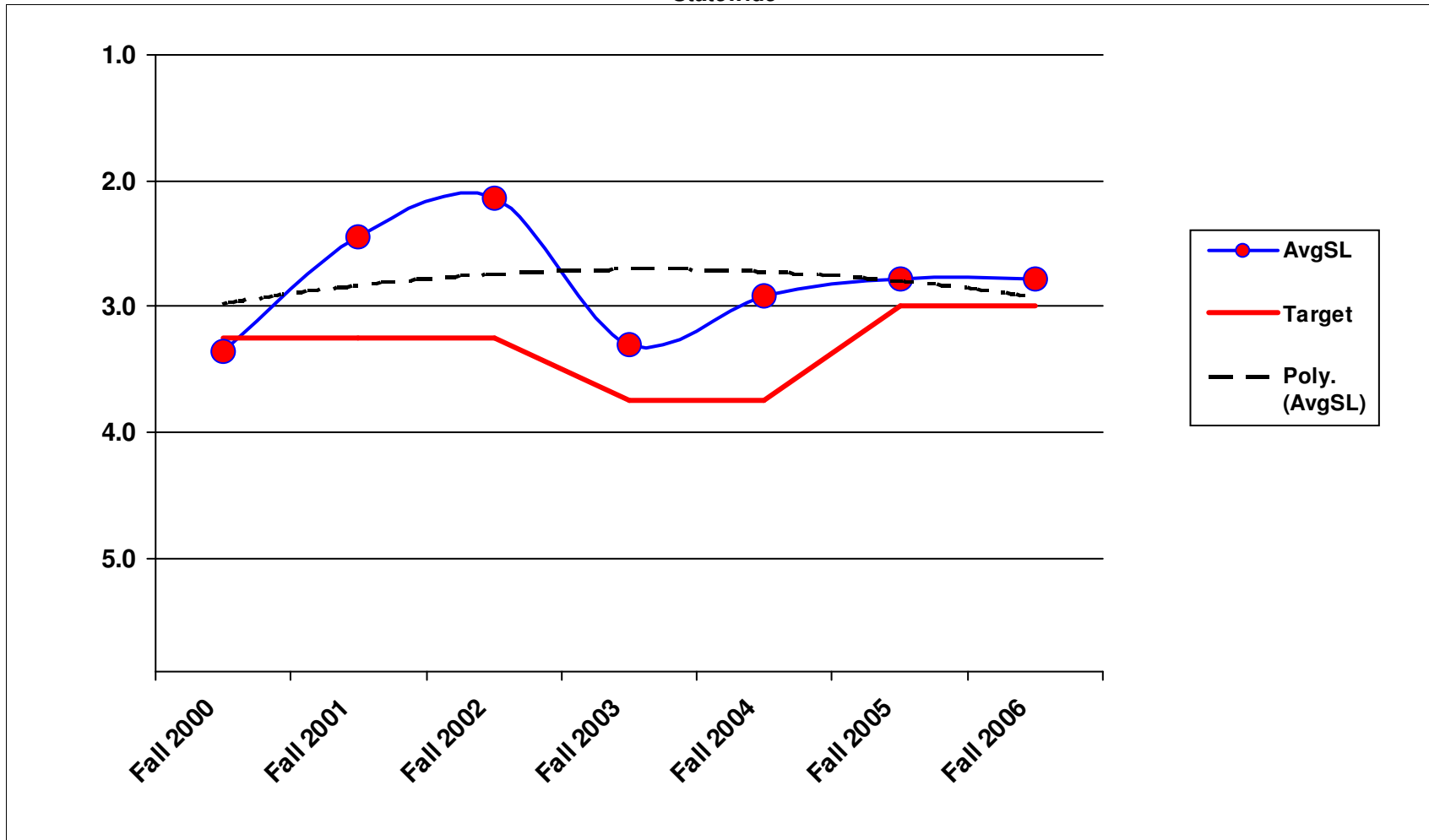


### 6B2 - Highway Lighting Systems Statewide



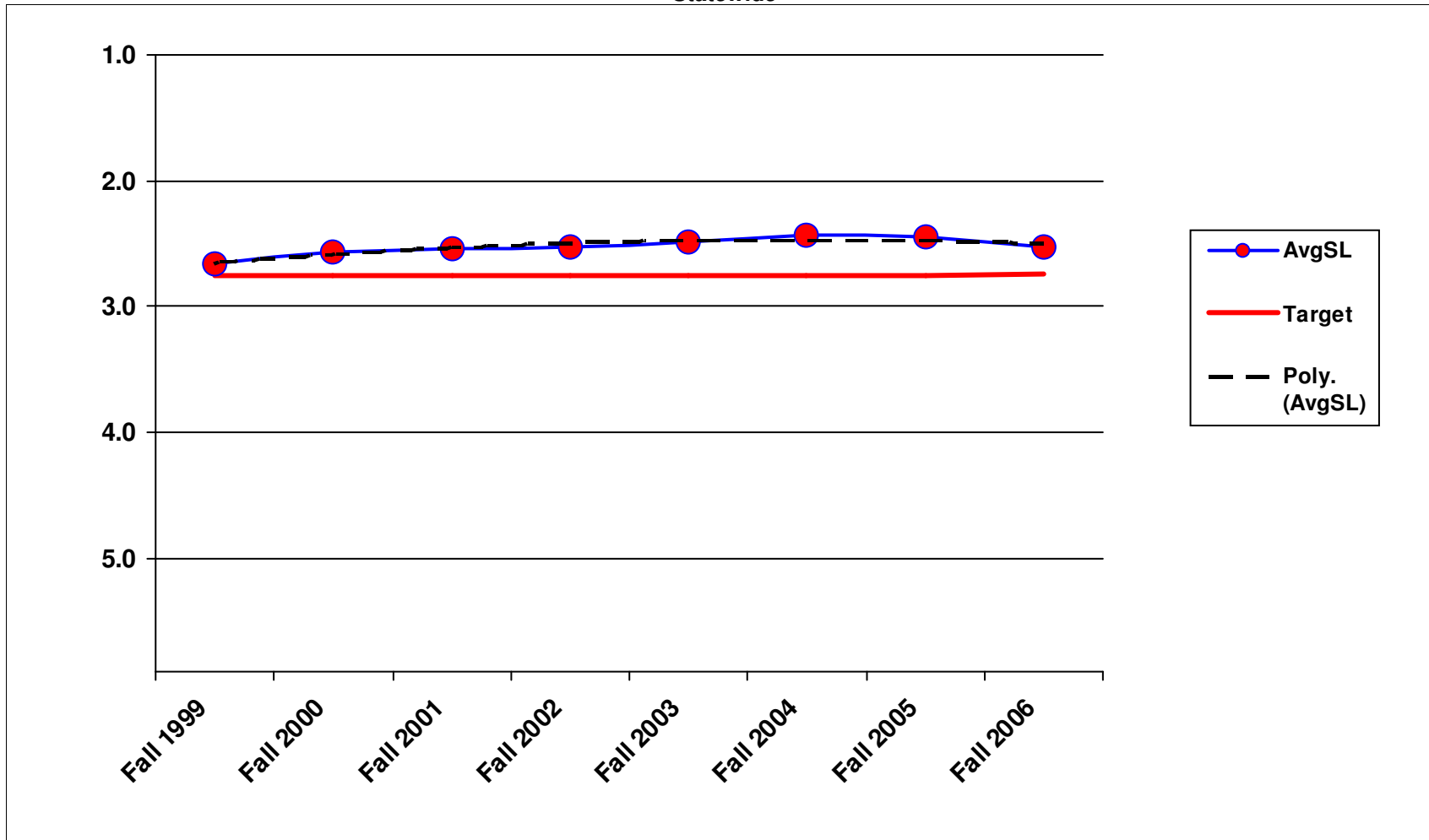
1/25/2007

### 6B3 - Intelligent Transportaion Systems Statewide



1/25/2007

### 7B1 - Rest Area Operations Statewide



1/23/2007