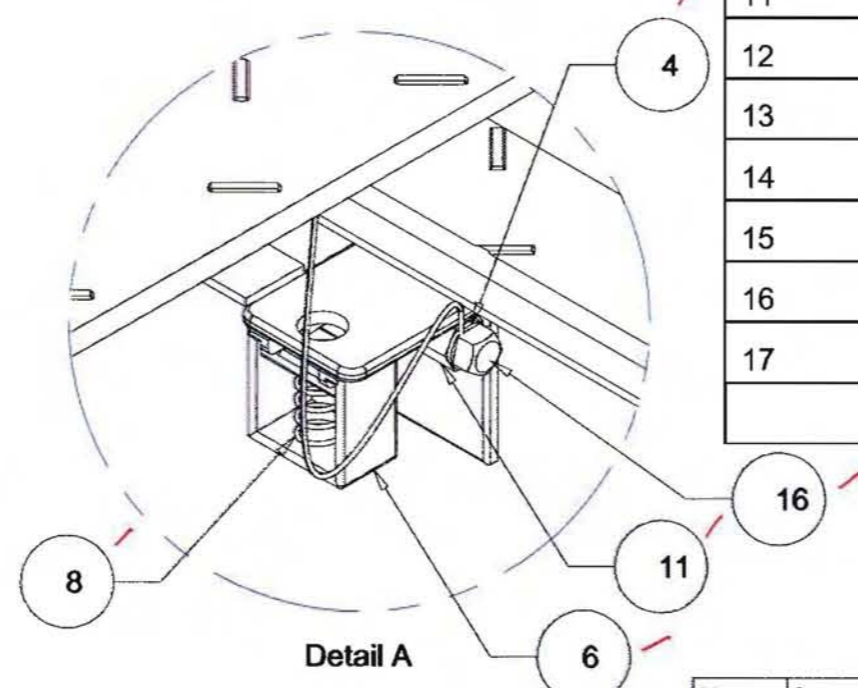
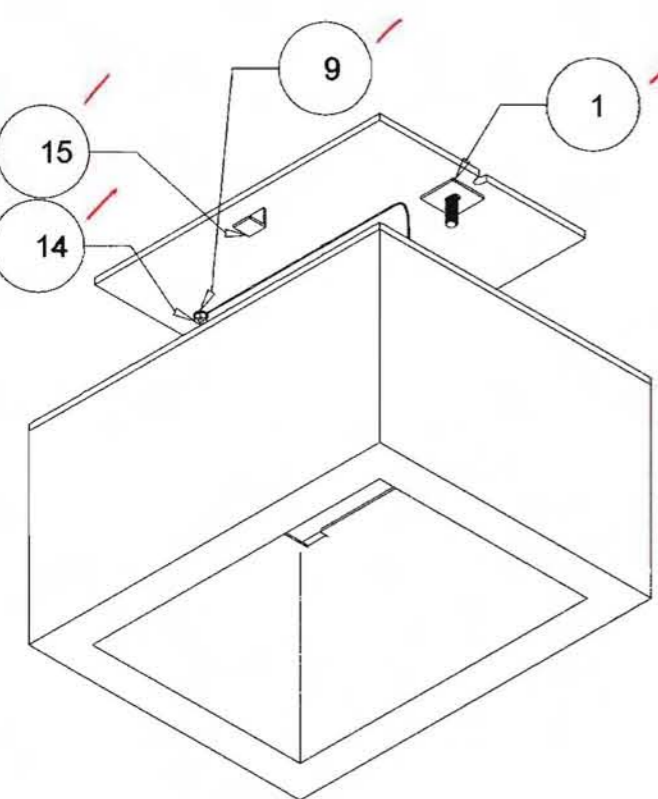
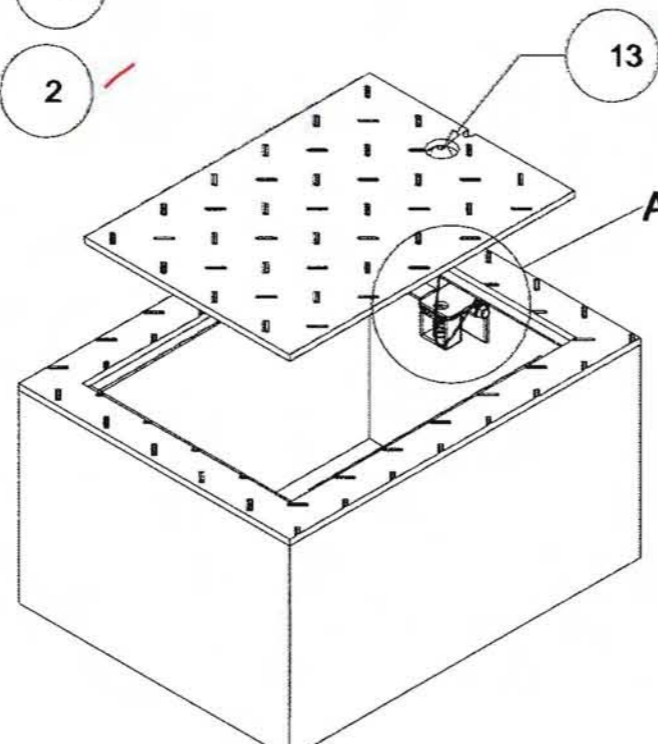
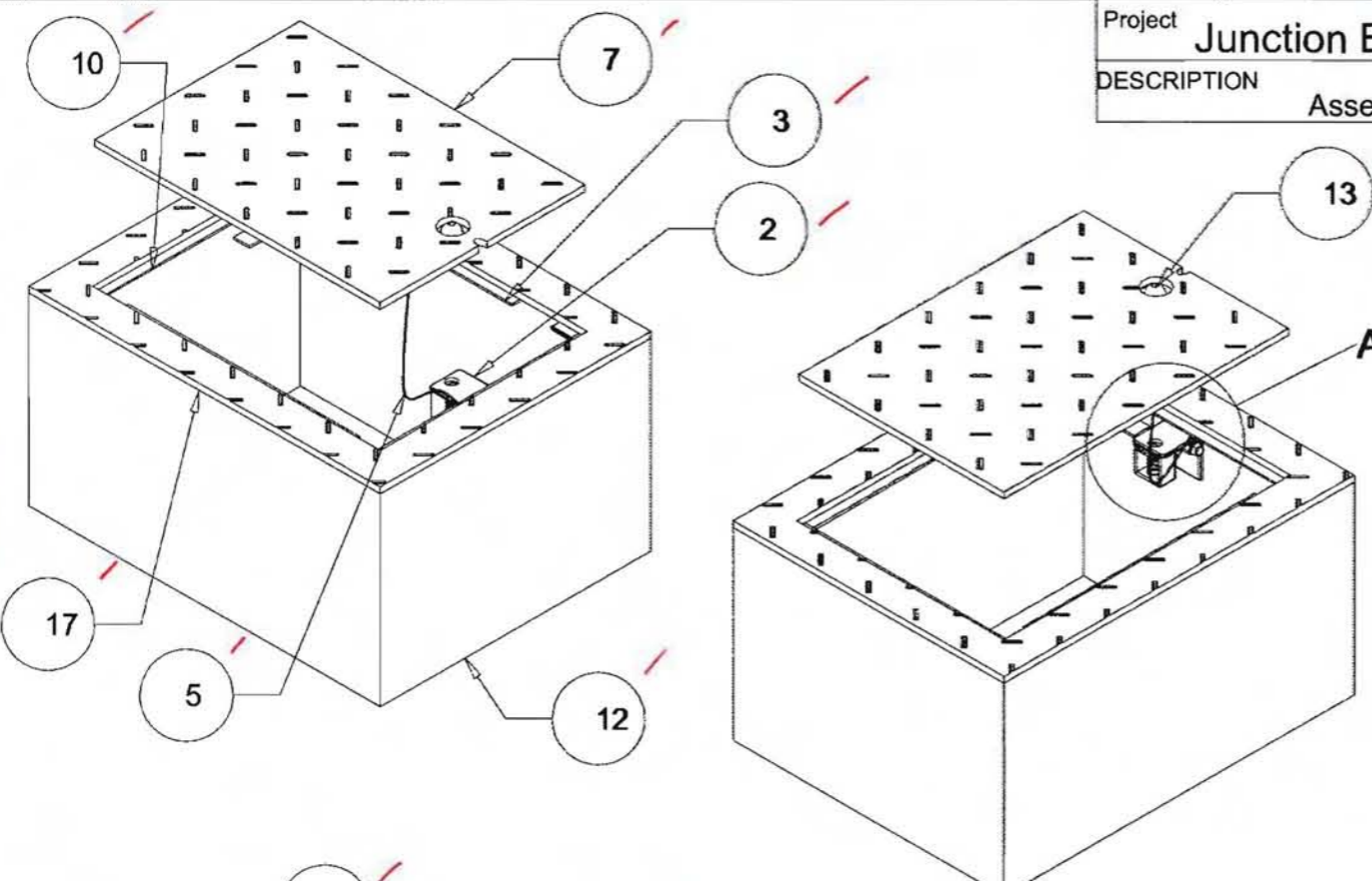


Project **Junction Box - Type 1**

DESCRIPTION **Assembly and BOM**

DATE **1-19-09**

APPROVED



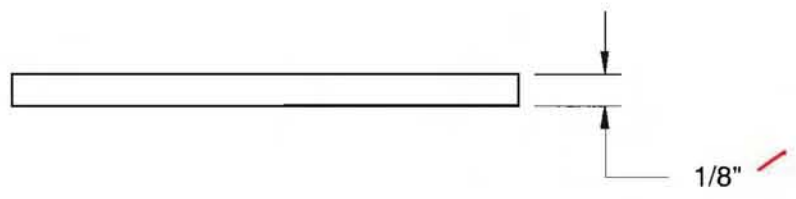
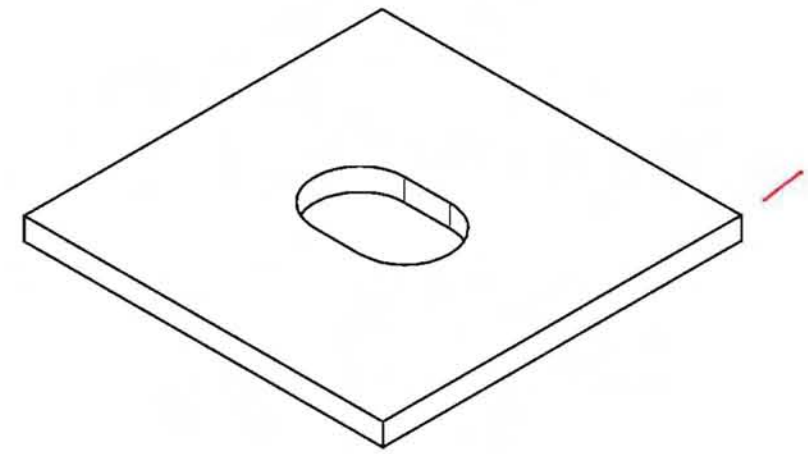
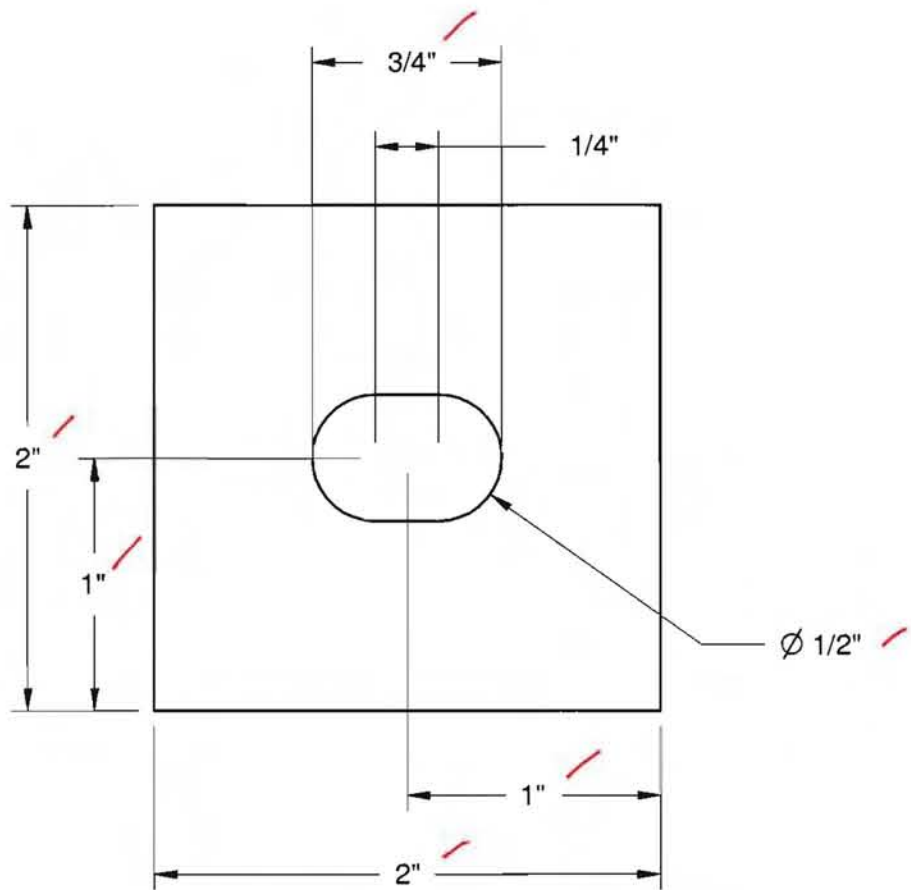
Item Number	Quantity	Part Name
1	1	Lock Plate ✓
2	1	Lock Angle Bracket ✓
3	2	1 1/2" x 1 1/2" x 1/4" Angle Iron ✓
4	✓ 2	5/16 Washer - <i>Stainless Steel</i> ✓
5	1	Ground Lead ✓
6	1	Lock Channel - <i>Stainless Steel</i> ✓
7	1	Lid ✓
8	1	1/2" Spring Nut - <i>Stainless Steel</i> ✓
9	✓ 2	1/4" Washer - <i>Stainless Steel</i> ✓
10	2	1 1/2" x 1 1/2" x 1/4" Angle Iron ✓
11	1	5/16" x 7/8" Hex Coupling Nut - <i>S.S.</i> ✓
12	1	Concrete Box ✓
13	1	Penta Head Bolt - <i>Stainless Steel</i> ✓
14	1	1/4" Nut - <i>Stainless Steel</i> ✓
15	2	1" x 1" x 1/8" Angle Iron ✓
16	1	5/16" x 3/4" Bolt - <i>stainless steel</i> ✓
17	1	LidFrame ✓

APPROVED AS NOTED
 Washington State
 Department of Transportation
 HQ Traffic Operations Office
 DATE May 12, 2009 TAT



SIZE A	Contractor	REV
SCALE	Drawn By Eric Duffey	SHEET 1

Project	Junction Box - Type 1	
DESCRIPTION	Lock Plate	DATE 1/19/09
		APPROVED



APPROVED
 Washington State
 Department of Transportation
 HQ Traffic Operations Office
 DATE May 2, 2009 TAT

H² PRE-CAST INC.
 CONCRETE PRODUCTS

SIZE	Contractor		REV
A			
SCALE	Drawn By	SHEET	
	Eric Duffey	2	

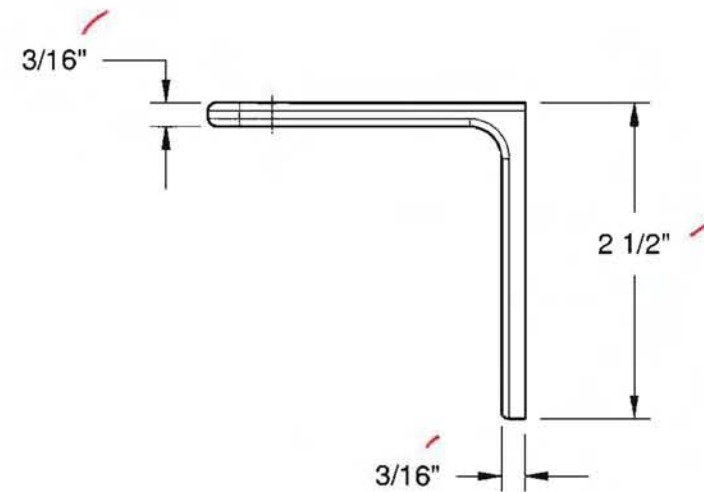
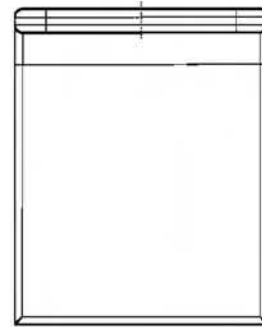
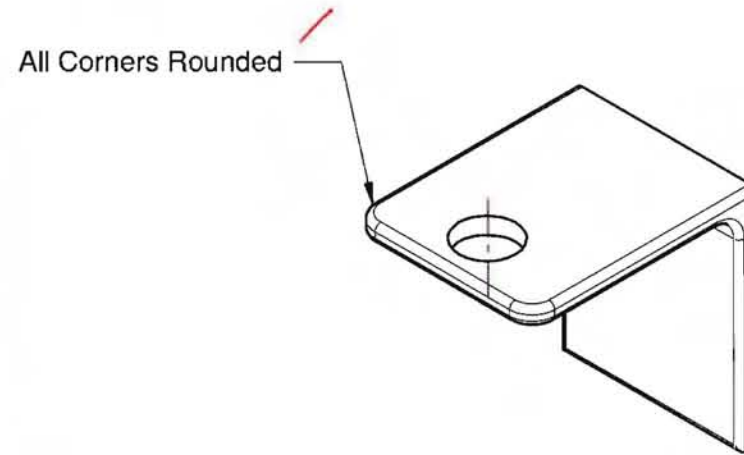
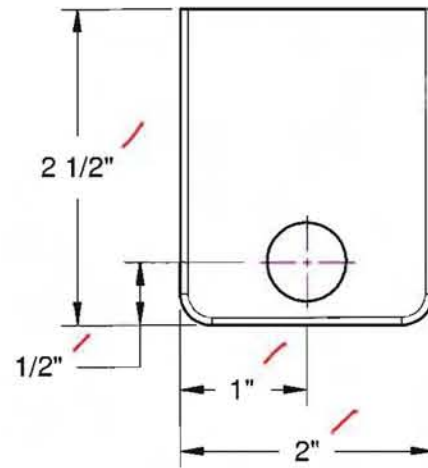
Project
Junction Box - Type 1

DESCRIPTION
Lock Angle Bracket

DATE
1/19/09

APPROVED

APPROVED
Washington State
Department of Transportation
HQ Traffic Operations Office
DATE May 12, 2009 TAT



H² PRE-CAST INC.
CONCRETE PRODUCTS

SIZE A	Contractor	REV
SCALE	Drawn By Eric Duffey	SHEET 3

Project
Junction Box - Type 1

DESCRIPTION
Lock Channel

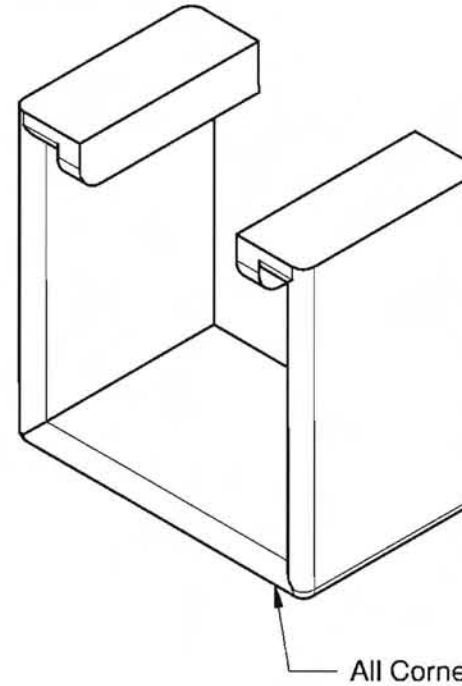
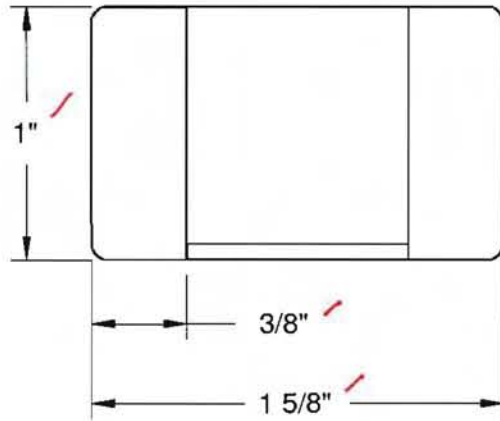
DATE
1/19/09

APPROVED

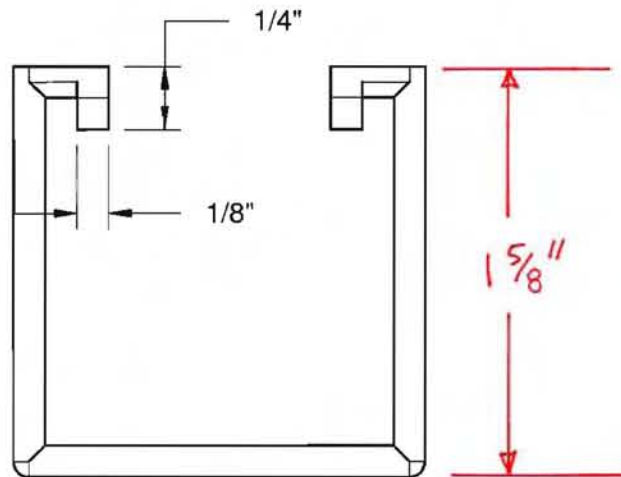
APPROVED AS NOTED

Washington State
Department of Transportation
HQ Traffic Operations Office

DATE May 12, 2009 TAT



All Corners Rounded



H² PRE-CAST INC.
CONCRETE PRODUCTS

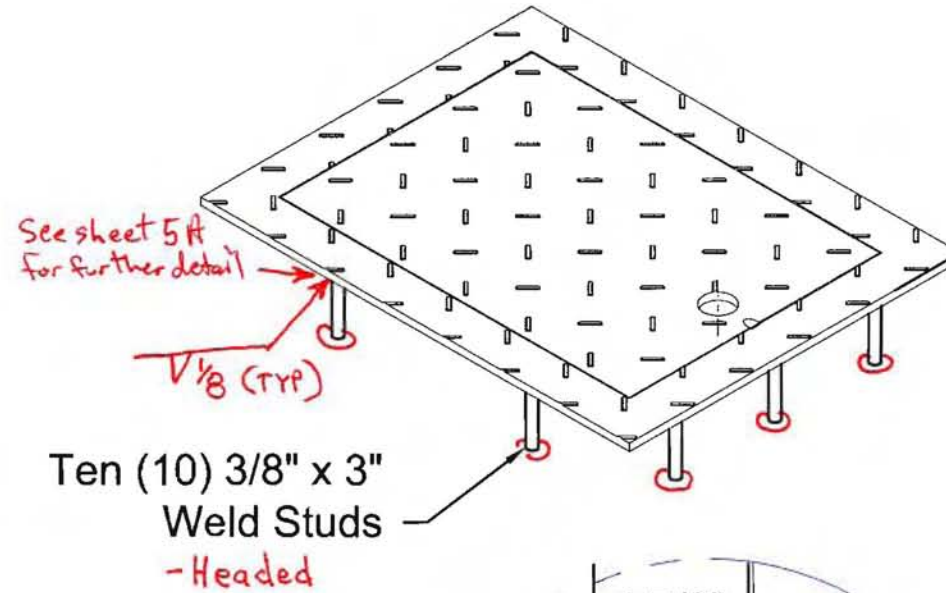
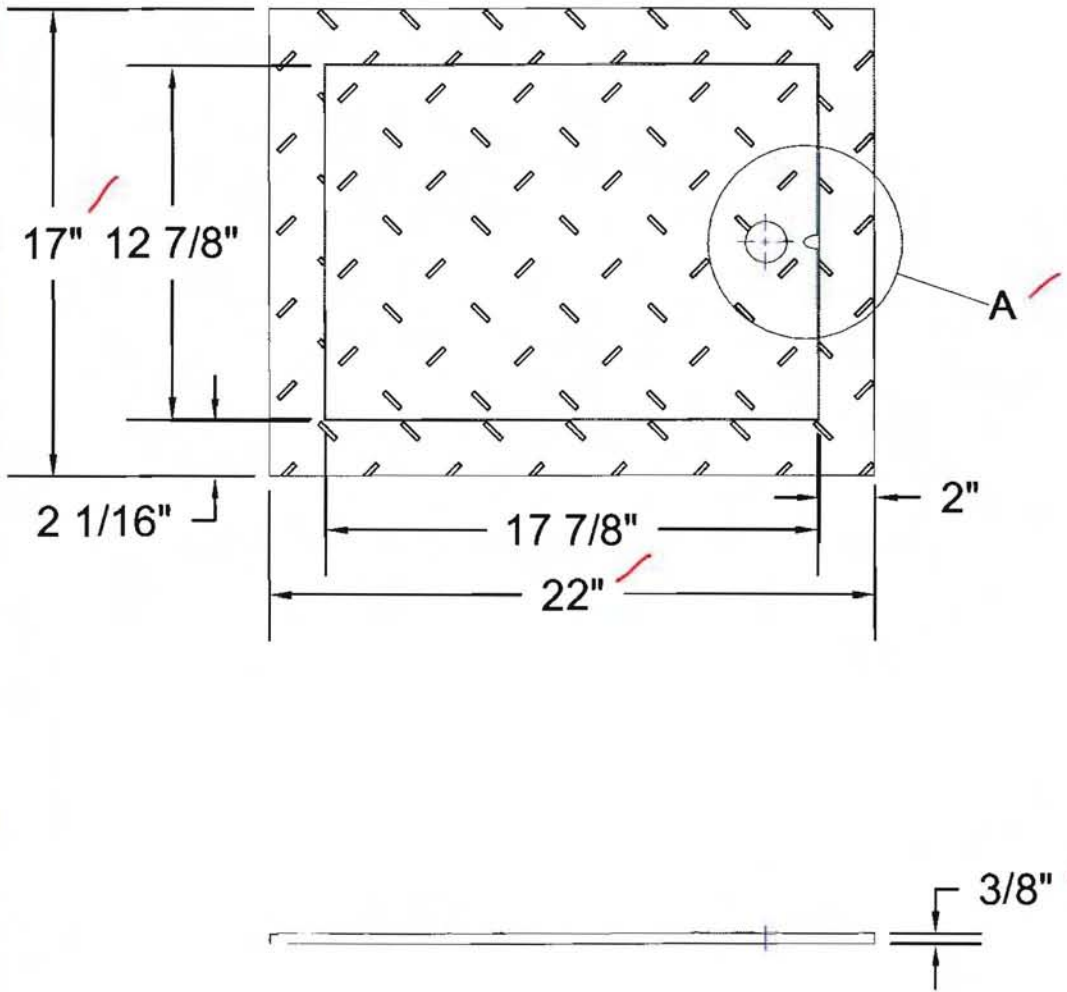
SIZE A	Contractor	REV
SCALE	Drawn By Eric Duffey	SHEET 4

Project Junction Box - Type 1

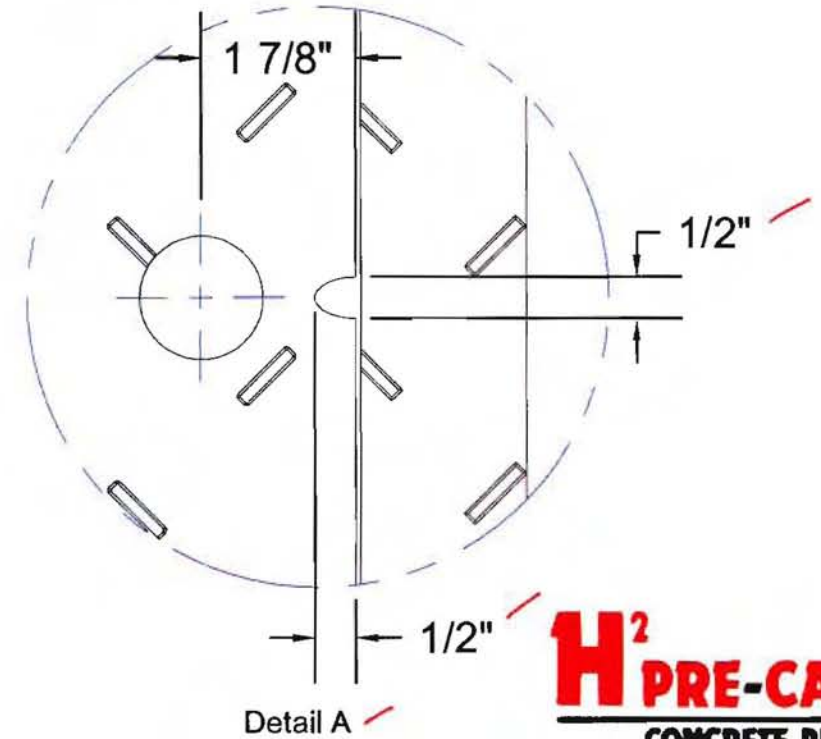
DESCRIPTION Lid and Frame

DATE 1/19/09

APPROVED



Ten (10) 3/8" x 3" Weld Studs - Headed



APPROVED AS NOTED

Washington State
Department of Transportation
HQ Traffic Operations Office
DATE May 12, 2009 TAT

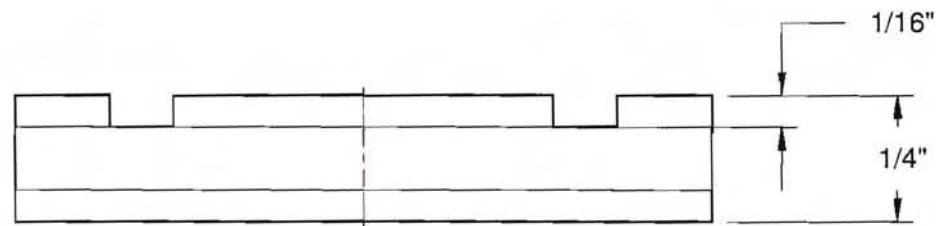
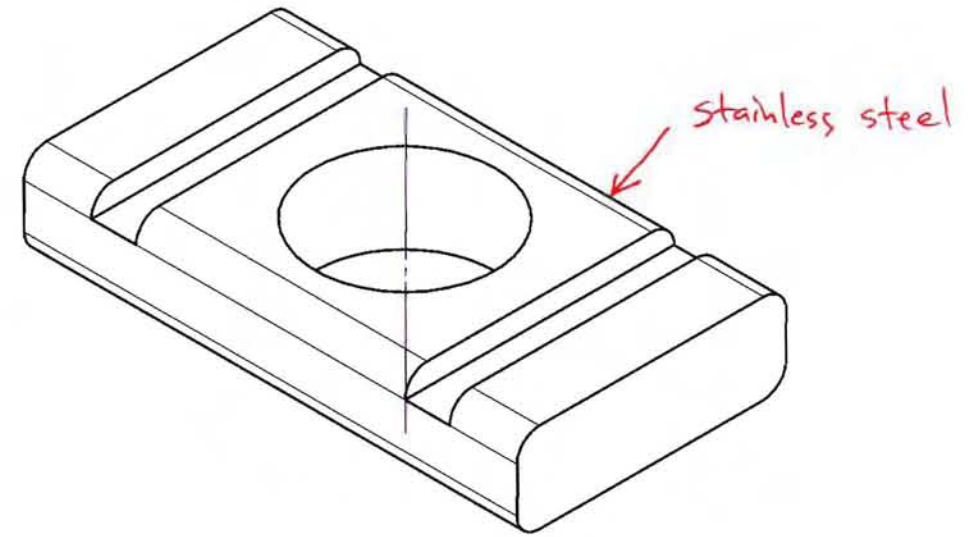
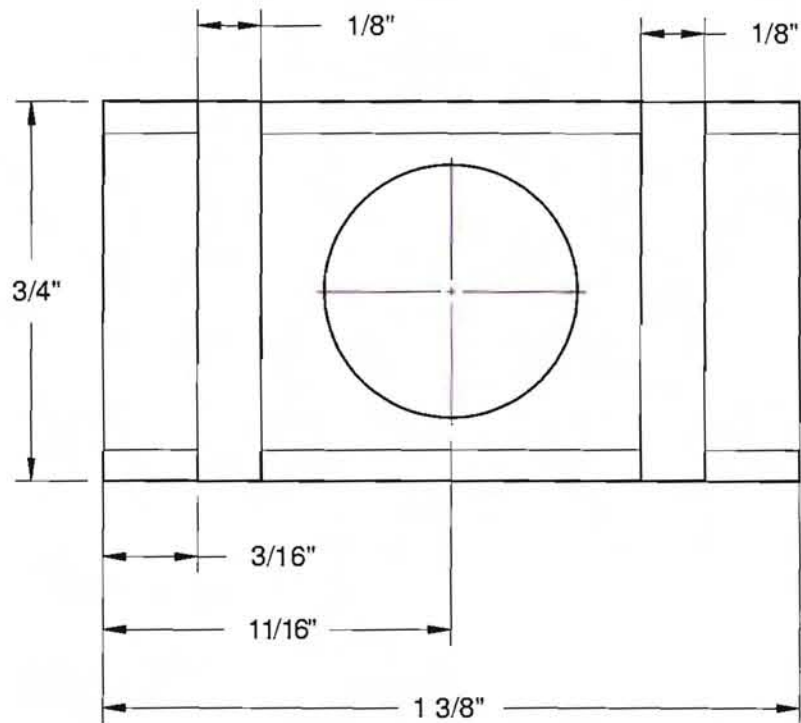
H² PRE-CAST INC.
CONCRETE PRODUCTS

SIZE A	Contractor	REV
SCALE	Drawn By Eric Duffey	SHEET 5



Sheet 5A

Project Junction Box - Type 1	DATE 1/19/09	APPROVED
DESCRIPTION Spring Block		



APPROVED AS NOTED

Washington State
 Department of Transportation
 HQ Traffic Operations Office
 DATE May 12, 2009 TAT

H² PRE-CAST INC.
 CONCRETE PRODUCTS

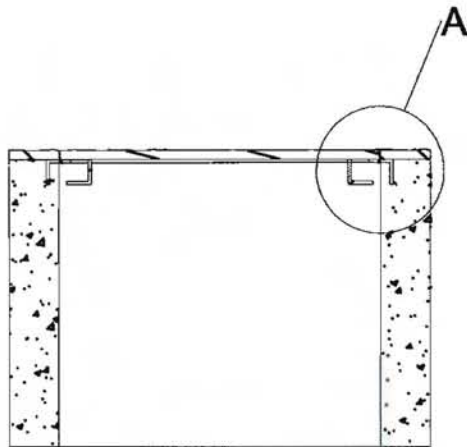
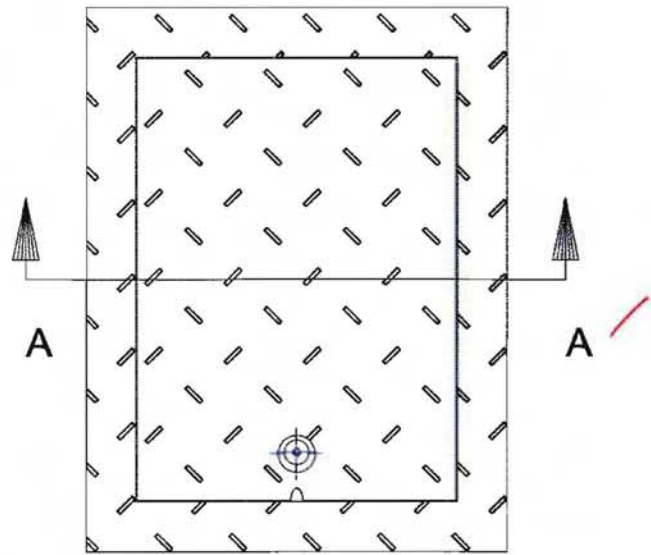
SIZE A	Contractor	REV
SCALE	Drawn By Eric Duffey	SHEET 6

Project Junction Box - Type 1

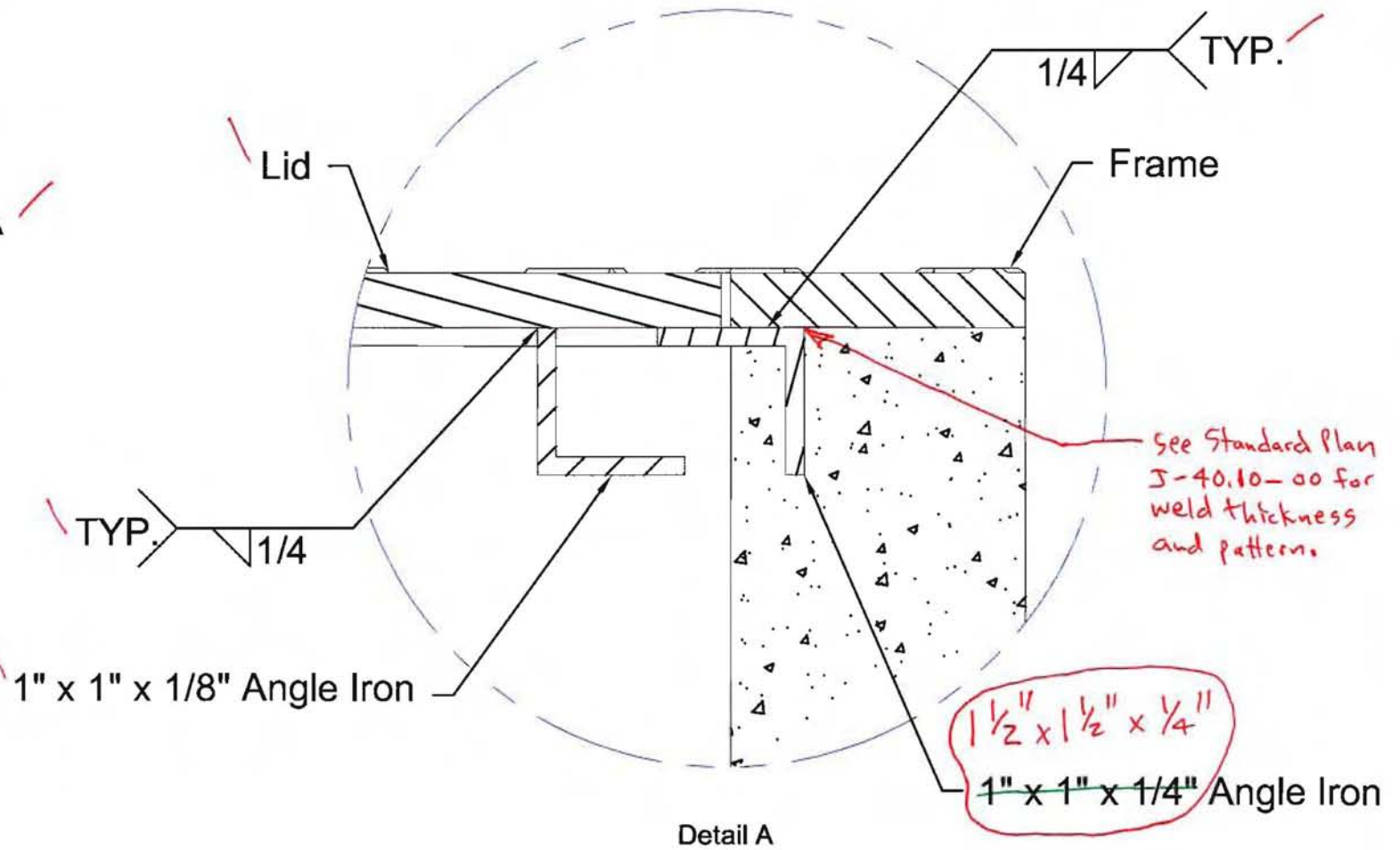
DESCRIPTION Angle Iron Detail

DATE 1/19/09

APPROVED



Section A-A



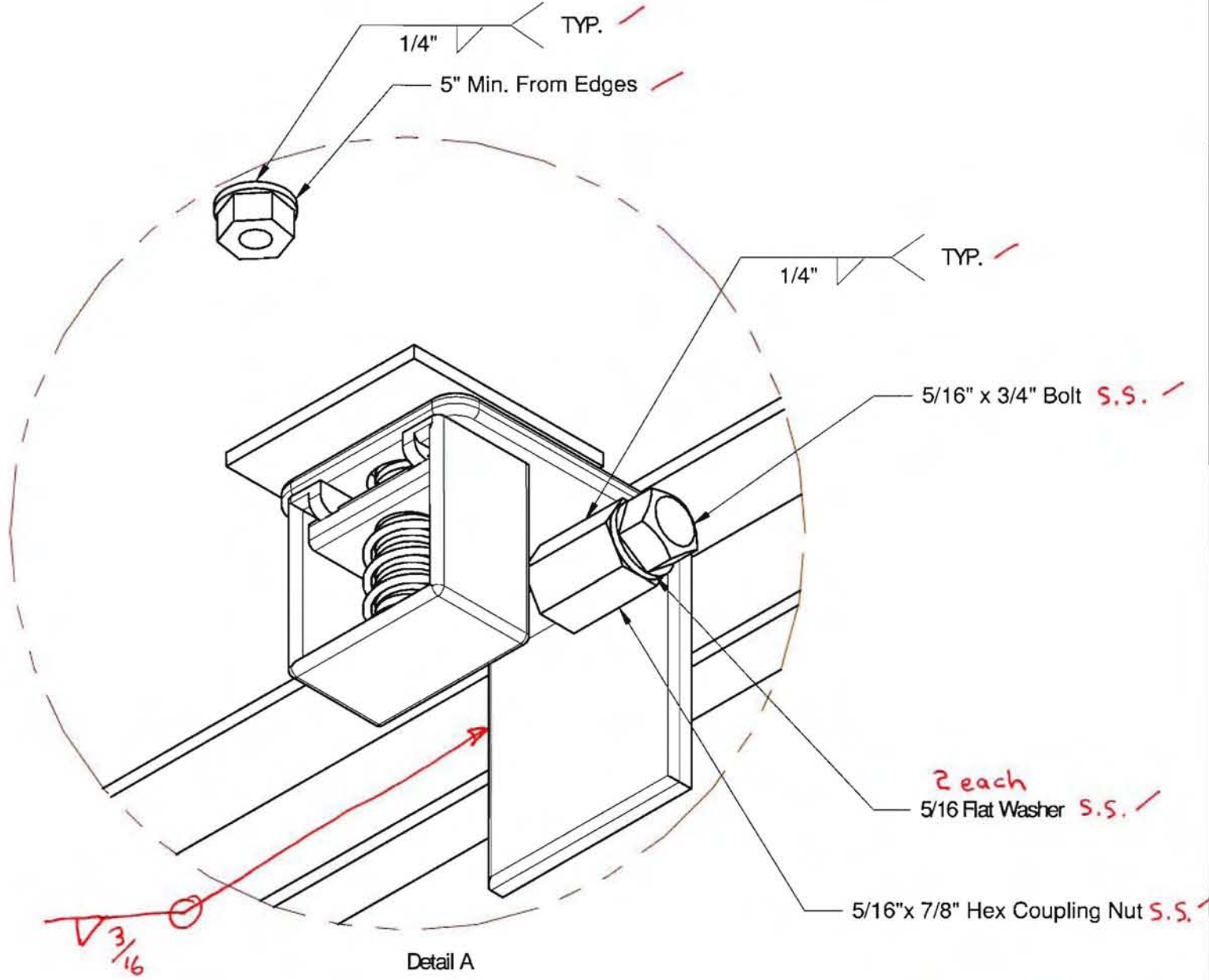
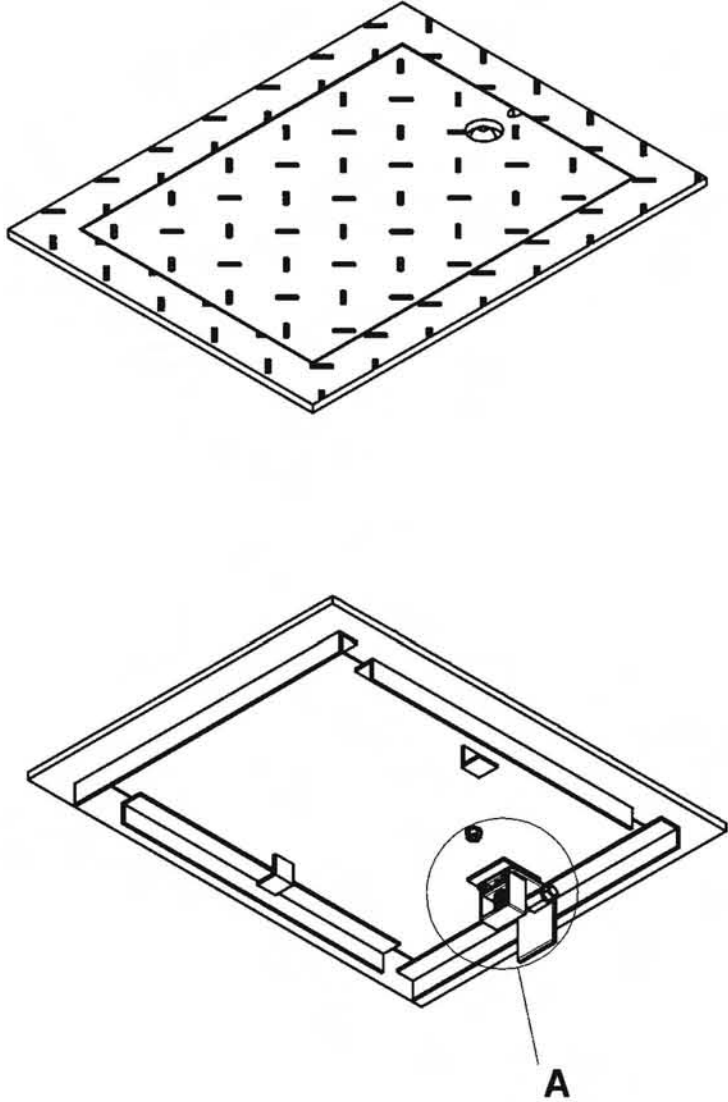
APPROVED AS NOTED

Washington State
Department of Transportation
HQ Traffic Operations Office
DATE May 12, 2009 TAT

H² PRE-CAST INC.
CONCRETE PRODUCTS

SIZE	Contractor	REV
A		
SCALE	Drawn By Eric Duffey	SHEET 8

Project	Junction Box - Type 11	DATE	1/19/09	APPROVED
DESCRIPTION	Hex Nut Detail			



APPROVED AS NOTED
 Washington State
 Department of Transportation
 HQ Traffic Operations Office
 DATE May 12, 2009 TAT



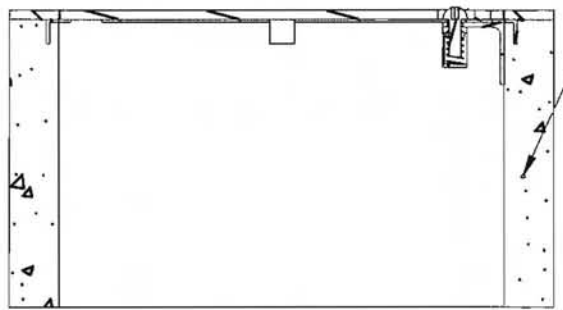
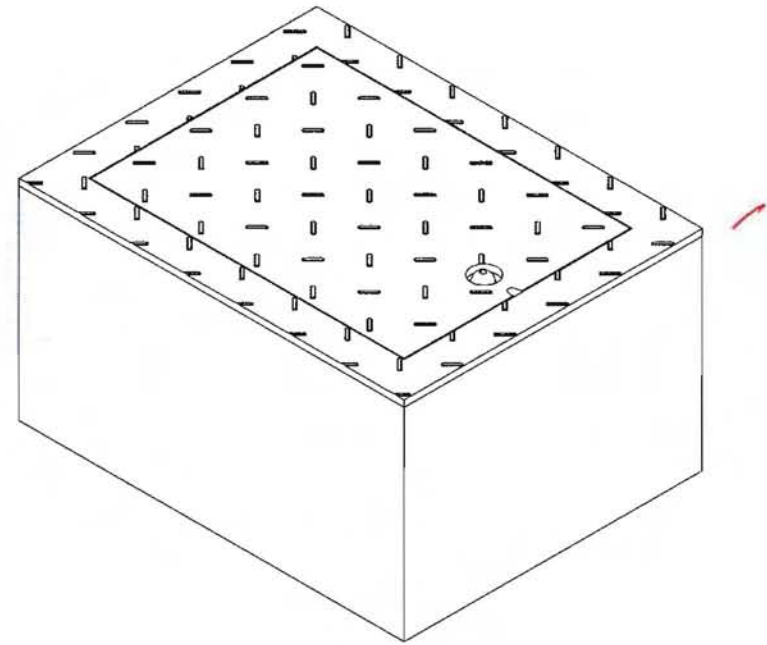
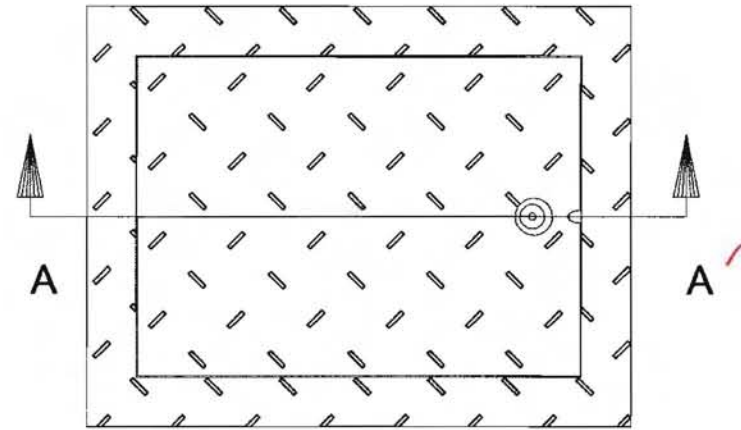
SIZE	Contractor		REV
A			
SCALE	Drawn By	SHEET	
	Eric Duffey	9	

Project **Junction Box - Type 1**

DESCRIPTION
Reinforcement Detail

DATE
1/19/09

APPROVED



Fiber Mesh / Mix Design "WSDOT Type 1 & 2 J-Boxes 05/08/09"
Force Concrete equals 6000 PSI

Section A-A

APPROVED AS NOTED
Washington State
Department of Transportation
HQ Traffic Operations Office
DATE May 12, 2009 TAT

H² PRE-CAST INC.
CONCRETE PRODUCTS

SIZE A	Contractor	REV
SCALE	Drawn By Eric Duffey	SHEET 10