

**Benton-Franklin
Council of Governments
Transportation Office
Tri-MATS**



**Unified Planning
Work Program**

Includes
Benton/Franklin/Walla Walla MPO and
RTPO Program and the WSDOT South Central Region

Adopted by the BFCG Board May 16, 2008

For State Fiscal Year 2009
July 1, 2008 to June 30, 2009

Table of Contents:

| | |
|---|-----------|
| Introduction | 1 |
| Fiscal Year 2008 Accomplishments | 1 |
| Proposed Funding Sources | 1 |
| Regional Transportation Issues | 2 |
| Transportation Issues to be Addressed During the Next Year | 3 |
| Work Element Descriptions | 3 |
| 220 — Program Administration, Interagency Coordination, and Public Involvement | 4 |
| 221 — Regional Transportation Products | 6 |
| 222 — Traffic Data Management and Monitoring Programs | 7 |
| 223 — RTPO Long-Range Transportation Planning & Washington Transportation Plan | 8 |
| Revenue Summary | 9 |
| Expenditure Summary | 10 |
| MPO/RTPO Boundaries Map | 11 |
| Staff Chart | 12 |
| Calendar Year 2008 PAC Committee Members | 13 |
| Calendar Year 2008 TAC Committee Members | 15 |
| MPO/RTPO Structure | 16 |
| Unfunded Planning Studies and Projects | 17 |
| Acronyms List | 18 |

Introduction

The Unified Planning Work Program (UPWP) describes transportation planning activities proposed to be undertaken during the next fiscal year. These activities support a continuing, coordinated, and comprehensive transportation planning process, ensuring that projects ultimately destined for implementation are necessary, feasible, and in the best interest of the Tri-Cities Metropolitan Area and the Benton, Franklin, Walla Walla Regional Transportation Planning Organization (RTPO). Identification of these activities includes purpose, generalized scope, and financial resources necessary to complete the task. All tasks included in the UPWP are a direct result of issues, concerns, and problems identified as part of the ongoing Tri-Cities Metropolitan Area Transportation Study (Tri-MATS) Program. During fiscal year 2009 the UPWP will have work allocated to four basic elements. These elements include Program Administration, Regional Transportation Products, Data Management, and the Washington Transportation Plan/Long Range Plan, all of which address local projects having an impact on the regional transportation system. The majority of work is ongoing activities necessary to keep the Tri-MATS program current with updated information and continued interagency coordination through the committee structure. Such activities include Regional Transportation Products that are required to be developed annually and Data Management to support analysis for planning projects, which keeps the Regional Transportation Plan and its subsidiary components accurate.

Special projects are specifically targeted by the Tri-MATS committees to assist one or more local jurisdictions in advancing a project from its conception to the point where decision makers can determine overall feasibility. This sometimes includes pre-design studies, environmental analysis, and cost estimates.

Fiscal Year 2008 Accomplishments

During fiscal year 2008 most activities were completed. Ongoing activities such as the UPWP, 2008 Transportation Improvement Program (TIP), annual progress report, SAFETEA-LU requirements, and Ben Franklin Transit projects were generally completed and on schedule. Other accomplishments are specifically identified in the FHWA/WSDOT Annual Report. Key accomplishments included Major Employers update, Park and Ride study, Public Involvement Procedures update, GMA Transportation Certifications, Tri City Bike Map update and reprinting, BFT Customer Awareness Survey, and FFY 2008-9 STP funding to locals including TE projects.

Proposed Funding Sources

Work tasks identified within this document are typically funded from five basic sources. They are: local funds derived from membership to the Benton-Franklin Council of Governments (BFCG); Federal Highway Administration (FHWA) for basic surface transportation planning; Federal Transit Administration (FTA) for public transportation related planning activities; Regional Transportation Planning Organization (RTPO) Program; and the Washington State Long Range Program.

Funds shown within the UPWP are requested for each UPWP submission and amended as necessary to reflect modifications to the scope of work. If expenditures exceed budgets, the differences are derived from BFCG local funds.

MPO/RTPO Regional Transportation Issues

- Continue construction of US 12 between the Tri-Cities and Walla Walla into a partial access control 4-lane facility to allow increased capacity for moving freight, lessen congestion, and improve safety.
- Monitor the Hanford commute (50,000+ average daily traffic). There are many single-occupancy commuters traveling to few destinations. This strains the highway system and causes commuters to seek other routes through residential areas of Richland.
- Preserve rail lines (including short-haul) as a mode of transportation within the RTPO.
- Projected \$ 500 million shortfall – (2006- 2025 RTP estimate) over the next 20 years to fully fund all Regional Transportation Plan maintenance, preservation, and improvement costs.
- Reopening of Stampede Pass significantly impacted nine at-grade railroad crossings within the Tri-Cities urban area. Two grade separated crossings have been constructed the other 7 are in the planning stage.
- Barging is the second most cost-effective freight mode in the transportation system behind pipeline transport and is an integral part of the region’s river transportation system. If “drawdowns” are implemented, it will cause significant impacts to local economies and increase the need for rail and truck use.
- Continue to work on single occupant vehicle (SOV) reduction. The Census 2000 “Work Travel by Mode” in the Tri-Cities is 77% drive-alone; 14% carpool, and 9% other. National average is 76% drive alone; 12% carpool, and 12% other. The Hanford commute is about 90% SOV’s in the north Richland area.
- Supporting various modes of travel, the Tri-Cities area has developed over 100 miles of bicycle routes and paths. Ben Franklin Transit has also increased ridership by creating new routes and expanding the Public Transportation Benefit Area into the rural area of Benton County. Loss of Greyhound bus service within the RTPO has increased the need for additional inter-city transit service.
- Farm-to-market roads are subject to heavy truck usage and seasonal weight restrictions compromising the efficient movement of freight and goods. Constructing “All Weather Roads” can be the solution.
- Commute Trip Reduction (CTR) will be a Tri-Cities issue in 2008/9.
- Continue to seek capacity, safety, and congestion solutions for improvements to US 395 through Pasco and Kennewick, (Including a new Columbia River Crossing) Red Mountain

Interchange, and improved funding for other local arterials.

Transportation Issues to be Addressed During the Next Year

Tri-MATS committees, comprised of transportation professionals, have reviewed transportation needs of the metropolitan and rural areas of the three counties and have determined additional planning work should be accomplished. These accomplishments should improve access to state highways, as well as provide information on transit ridership needs and preventative maintenance on local roads.

Based on input from the committees and the federal/state emphasis areas, this one-year program will stress the continuation of an updated Regional Transportation Plan (RTP), continuation of data collection, special reports, and SAFETEA-LU requirements. In addition, the GMA requirements for transportation planning and certification will be continued.

Specific issues will continue to focus on regional safety improvements (reduced collisions = saved lives) and economic development improvements by completing identified projects in the urban area. High profile projects and tasks that will be supported include: US 12 four laning to Walla Walla, Red Mountain Interchange, Columbia River Crossing Study, Transportation Demand Management, US 395 improvements, 2010 Census transportation impacts, and continuing work on inter-city and inter-jurisdictional public transportation. Intermodal activities will be developed throughout the work program, i.e. continued focus of rail, barge, and freight impacts. Additionally, impacts of TEA-4 reauthorization and designation of TMA/MPO status for Tri-Cities and Walla Walla urban area will be monitored. An unfunded portion of the UPWP (Page 17) lists important planning projects where funding is not secured.

The MPO/RTPO is dedicated to a truly multi-modal transportation system, needed to support our economically diverse region. Roads are very important but marine, rail, air, barge, transit and freight movements are all necessary to balance the overall system.

Work Element Descriptions

This work program has been divided into four categories. Each category addresses distinct activities necessary to maintain or enhance the Metropolitan Planning Organization (MPO) process and the RTPO Program. Short narratives and cost estimates are provided for each category and sub-element.

220 — Program Administration, Interagency Coordination, and Public Involvement

This category provides ongoing staff support for program management and development, augments committee activities, and provides transportation expertise to Tri-MATS members lacking staff capabilities. FTA related activities are included.

- 220.1 Administer and manage the continuing transportation planning program of the MPO and RTPO, including supervision of staff, office management, personnel activities, training conferences, committee participation, travel, etc.
- 220.2 Staff support for all Tri-MATS and Board committees, including processing and submitting recommendations to WSDOT/FHWA, Legislators, etc.
- 220.3 Participate in economic development forums and other processes as appropriate.
- 220.4 Update Tri-MATS operating guidelines, i.e. general documents following MPO expansion into Walla Walla and SAFETEA-LU requirements.
- 220.5 Inter-Jurisdictional Coordination (Includes 25 Jurisdictions) — Meeting attendance to support coordination and cooperation for transportation planning and program solutions. Includes educational activities, newsletter, Good Roads and Transportation Association, forums etc.
- 220.6 Transportation System Management and Operations - Promote management and operation of the transportation system to meet a broad range of customer's needs. Includes encouragement in innovation, promotion of a national dialogue, and advancement of the state of the practice.
- 220.7 Monitor Safety and Security in all stages of the transportation planning process by assessment of facilities, identification of evacuation routes, and exercise participation with Benton-Franklin-Walla Walla safety agencies. Review WSDOT accident data.
- 220.8 Coordination with environmental resource agencies to ensure early and continuous coordination with environmental resource protection and management plans. Assess impact on RTP and projects.
- 220.9 Continue RTPO partnering efforts to support capacity expansion projects like US 12 from the Wallula to Walla Walla and the Red Mountain Interchange project.
- 220.10 Continue education of SAFETEA-LU funding programs, MPO requirements, planning guidelines, Tea 4 Recommendations, etc.
- 220.11 Prepare and support Freight Mobility strategies and strategic corridors.
- 220.12 Continue TDM/CTR meetings and activities within the MPO area.
- 220.13 Conduct ongoing public outreach efforts and provide educational materials.
- 220.14 Rural STP Program – Administration of Programs for Benton, Franklin and Walla Walla County Jurisdictions. Includes coordination, tracking of funds and obligation

balances.

- 220.15 Urban STP Program - Administration of Program for Tri-Cities Urban Jurisdictions. Includes coordination, tracking funds, and obligations.
- 220.16 STP Operating Review Committee - Staffing, preparation of documents, agenda's, recommendations to Board etc.
- 220.17 Enhancement Program –Administration of Program includes staff education per FHWA/WSDOT, call for projects, project processing and ranking, tracking funds and obligating, etc.
- 220.18 Tri-Cities Transportation Survey.
- 220.19 PTBA Requests – Assist BFT in document data needs for population, routes, demographics, revenue, mapping, etc.
- 220.20 Complete tasks associated with the Tri - Cities Community Round Table (CRT) on transportation.

| | | | |
|------------|---------------------|------------------|-----------------------------------|
| 220 | LOCAL | FHWA/FTA | |
| | \$49,000 | \$109,042 | \$158,042 (220 MPO) |
| 220 | RTPO (State) | \$30,000 | <u>\$30,000 (220 RTPO)</u> |
| | | | \$188,042 Total |

221 — Regional Transportation Products

This category supports specific reports and documents required to be developed or maintained annually. These documents include: Unified Planning Work Program and Amendments (UPWP), Transportation Improvement Program (TIP), Regional Transportation Plan (RTP) Amendments, Annual Report, other required certifications, and public transportation activities related to FTA. Each report is required to fulfill obligations of the Metropolitan Planning Process and Growth Management Act (GMA) requirements.

- 221.1 UPWP - Development, review and implementation of the Unified Planning Work Program for the upcoming fiscal year. (Includes amendments).
- 221.2 Transportation Improvement Program - Federal, State, and locally funded projects, CY 2009-2012. Complete amendments of all transportation projects in the MPO/RTPO as required by FHWA/WSDOT.
- 221.3 Monitor the Regional Transportation Plan and amend as necessary.
- 221.4 Complete FHWA/FTA requirements – Title 6, certifications, annual reports, Intelligent Transportation Systems Architecture (Approved per WSDOT 2004), etc.
- 221.5 Functional Classification – Process and amend all requests for changes and review to the Functional Class System in the RTPO.
- 221.6 GMA Activities – Review level of service methodologies and regional transportation strategies used by jurisdictions. Monitor transportation services and facilities of statewide significance. Review updates of comprehensive plans. (Complete RTP biennial review).
- 221.7 Mapping – Includes support mapping for reports, presentations, committee meetings, illustrations for policy decisions, jurisdictional requests, BFT requests, Census, Washington Geographic Services Project, etc.
- 221.8 Certification of Transportation Elements for the RTPO – Continue certification of all RTPO Jurisdictions to comply with GMA requirements and LOS requirements.
- 221.9 Update 1995 “Status of Railroads in Benton, Franklin, and Walla Walla Counties”. Includes rail abandonment update and map.
- 221.10 Complete “On Board Survey” for BFT using all modes of service.
- 221.11 Administer Human Services Coordination Grant Process for 2009-2011.
- 221.12 Assist in out-reach and data needs for possible PTBA expansion to Connell and North Franklin County.

| | | | |
|------------|---------------------|-----------------|-----------------------------|
| 221 | LOCAL | FHWA/FTA | |
| | \$55,000 | \$80,000 | \$135,000 (221 MPO) |
| 221 | RTPO (State) | \$30,000 | \$ 30,000 (221 RTPO) |
| | | | \$165,000 TOTAL |

222 — Traffic Data Management and Monitoring Programs

This activity category provides a whole array of data collection, analysis and processing services required to maintain program activities described in other categories within this work program.

Traffic data, population and employment data and functional classification system information are all presently stored within the BFCG computer system. Maintenance of this data permits local, state, and federal agencies, as well as private individuals, excellent opportunities for obtaining base data for virtually any type of program or project. In addition, much of the data is used for Tri-MATS activities such as traffic modeling, transit route analysis, and special projects.

- 222.1 Transportation Model – Monitor and modify the Transportation Model for the Tri-Cities Urban Area i.e. Includes software updates, data collection needs, consultant work, demographic information, 2010 Census Transportation Planning Package, TAZ updates, etc. We are also attempting to use automated license plate recognition cameras to capture external O-D data (WSDOT to complete work)
- 222.2 Traffic Counting program – Complete annual requested traffic counting program of locations throughout the Tri-Cities Metropolitan Area. Spreadsheet of counts will be available on line at the BFCG web-site. Update “Physical” traffic counts in the RTPO as needed.
- 222.3 Continue RTPO “Transportation Trends” report. Continue to refine MPO and expand to all of the RTPO. Trends to include population growth, road miles, VMT, LOS, accidents, bus ridership, mode split, etc. (Report started in 2002 using 1990 base year data)
- 222.4 Continue development and organization of the Columbia River Bridge crossing (CRCS) with WSDOT and other urban MPO jurisdictions.
- 222.5 Assist and supplement countywide efforts on freight/truck counts to support data collection for FMSIB and other all weather road projects.

| | | | |
|------------------------|------------------|------------------|------------------------------------|
| 222 | LOCAL | FHWA/FTA | |
| | \$ 26,000 | \$ 80,000 | \$ 106,000 (222MPO) |
| 222RTPO (State) | | \$ 16,034 | <u>\$ 16,034 (222 RTPO)</u> |
| | | | <u>\$ 122,034 TOTAL</u> |

**223 RTPO Long-Range Transportation Planning & Washington
Transportation Plan (WTP) Development, Implementation and Investments**

- Participate in development, implementation, and statewide activities related to the Highway System Plan and other modal plans as appropriate.
- Develop strategies for funding and prioritization of all-weather road in the RTPO and organize a forum.
- Collect, model, and analyze data applicable to the statewide plan, modal and issue plans, and the regional long range plan.
- Funding augmentation for the GMA activities regional transportation and growth management planning. Includes certifications and regional strategy.

223 RTPO (State) \$56,333

Revenue Summary

**TRI-CITIES METROPOLITAN AREA
TRANSPORTATION STUDY AND RTPO
FISCAL YEAR 2009 UNIFIED PLANNING WORK PROGRAM
REVENUE SUMMARY**

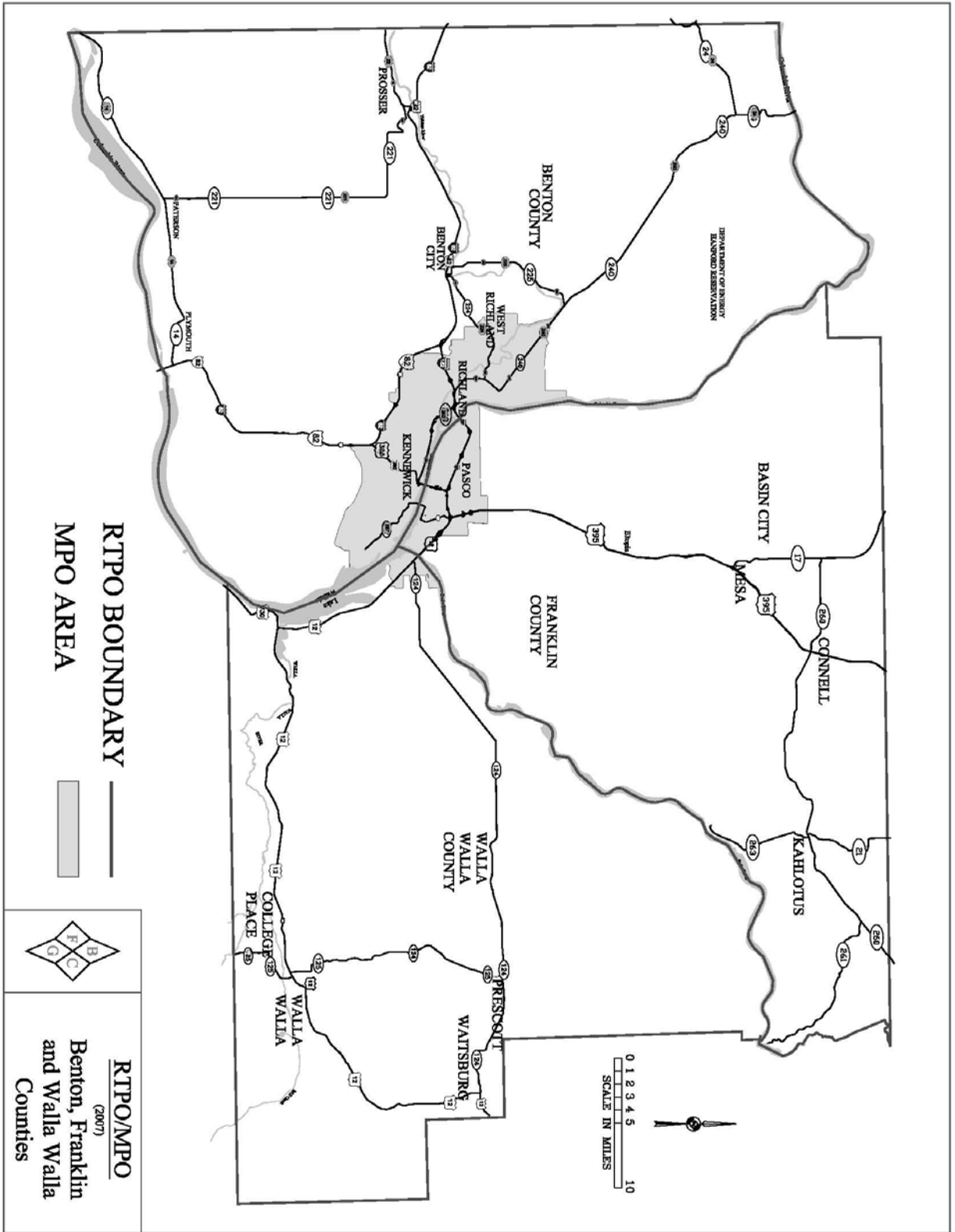
| | LOCAL | FHWA/FTA | RTPO/WTP | TOTAL |
|--|------------------|------------------|------------------|------------------|
| 220 PROGRAM ADMINISTRATION & MANAGEMENT | \$49,000 | \$109,042 | \$30,000 | \$188,042 |
| 221 REGIONAL TRANSPORTATION PRODUCTS | 55,000 | 80,000 | 30,000 | 165,000 |
| 222 DATA MANAGEMENT & MONITORING PROGRAMS | 26,000 | 80,000 | 16,034 | 122,034 |
| 223 LONG RANGE PLANNING & WTP UPDATE | | | 56,333 | 56,333 |
| TOTALS | <u>\$130,000</u> | <u>\$269,042</u> | <u>\$132,367</u> | <u>\$531,409</u> |

Includes approximately 5.3 FTE's

Expenditure Summary

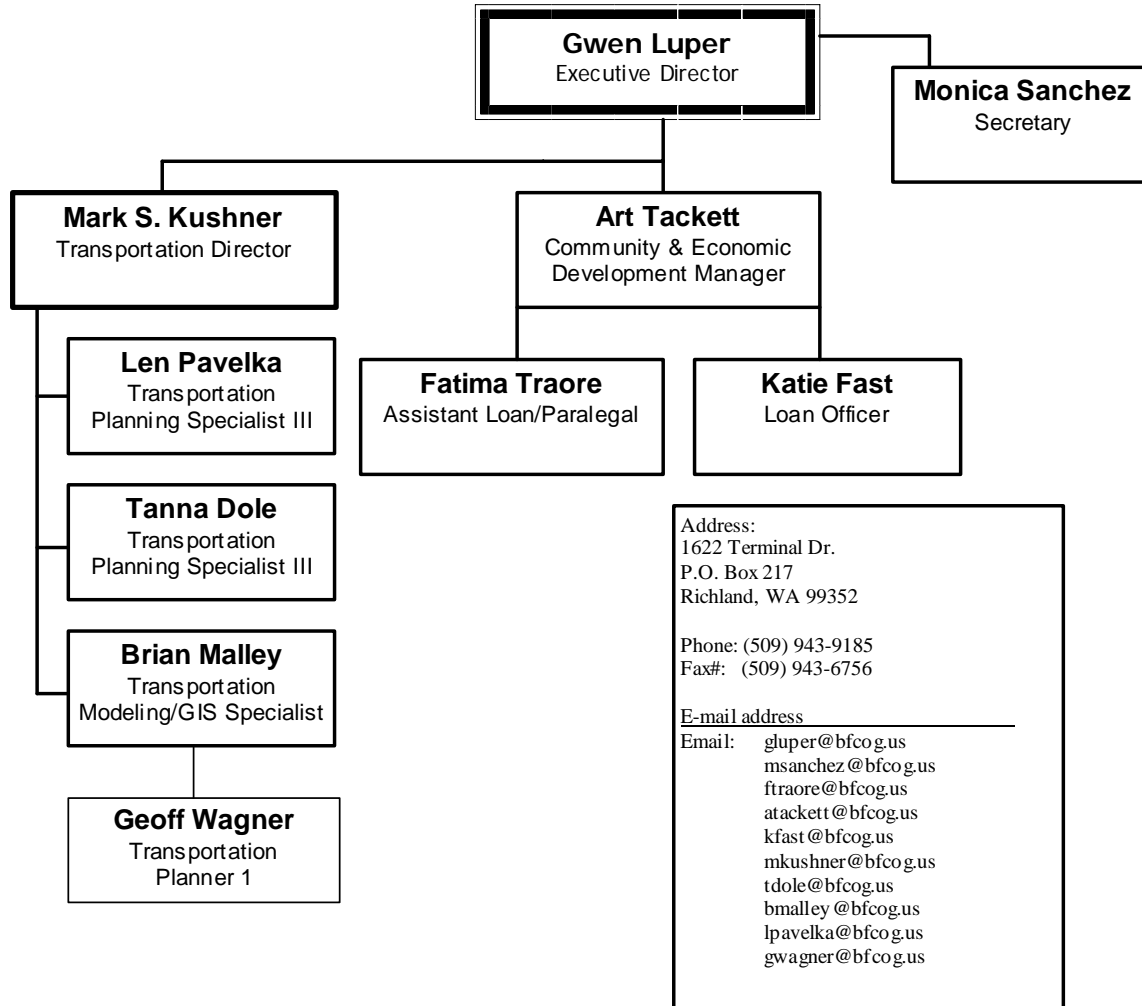
**TRI-CITIES METROPOLITAN AREA
TRANSPORTATION STUDY AND RTPRO
2009 UNIFIED PLANNING WORK PROGRAM
EXPENSE SUMMARY**

| | DIRECT | | | | |
|--|------------------|----------------|-----------------|------------------|------------------|
| | SALARIES | TRAVEL | MISC | O-HEAD | TOTAL |
| 220 PROGRAM ADMINISTRATION & MANAGEMENT | \$74,500 | \$2,100 | \$3,417 | \$108,025 | \$188,042 |
| 221 REGIONAL TRANSPORTATION PRODUCTS | 63,500 | 800 | 8,625 | 92,075 | 165,000 |
| 222 DATA MANAGEMENT & MONITORING PROGRAMS | 46,800 | 1,200 | 6,174 | 67,860 | 122,034 |
| 224 LONG RANGE PLANNING & WTP UPDATE | 22,500 | 208 | 1,000 | 32,625 | 56,333 |
| COLUMN TOTALS | <u>\$207,300</u> | <u>\$4,308</u> | <u>\$19,216</u> | <u>\$300,585</u> | <u>\$531,409</u> |



Benton-Franklin Council of Governments

2008
Staff Chart



TRI-MATS RTPO POLICY ADVISORY COMMITTEE
CALENDAR YEAR 2008 COMMITTEE MEMBERS

| | | |
|------------------------|------------------------------|--|
| Jerome Delvin o | (360) 786-7614 | WA State Senate |
| Mike Hewitt o | 527-4111 | WA State Senate |
| Mark Schoesler o | 659-1909 | WA State Senate |
| Maureen Walsh o | 509-200-1232 | WA St. House of Representatives |
| Bill Grant o | 529-4929 | WA St. House of Representatives |
| Steve Hailey o | 265-4282 (H) | WA St. House of Representatives |
| Joe Schmick o | 360-786-7844 | WA St. House of Representatives |
| Shirley Hankins o | 946-5406 | WA St. House of Representatives |
| Larry Haler o | 308-1957 | WA St. House of Representatives |
| Dave Rose | 946-5116 (W) 627-5266 (H) | City of Richland, Council Member |
| Leo Bowman, Vice-Chair | 736-3080 | Benton County, Commissioner |
| Lynn Johnson | 588-4531 H | Ben Franklin Transit, Council Member |
| Julie Jones | 967-5771 H | City of West Richland, Council Member |
| Bob Koch | 545-3535 (W) | Franklin County, Commissioner |
| Bob Olson | 586-9281 (W) 783-4472 (H) | City of Kennewick, Council Member |
| Bob Hoffmann | 547-7373 (H) | City of Pasco, Council Member |
| Bill Clark | 509-863-4702 | Port of Pasco, Commissioner |
| Don Whitehouse | 577-1620 | WSDOT South Central Region, Administrator |
| Bob Larson | 375-1547 (H) | Port of Benton, Commissioner |
| Randy Taylor, Chair | 875-4367 (W) | City of Prosser, Council Member |
| Gene Wagner | 783-6896 (H) | Port of Kennewick, Commissioner |
| Gary Walton | 234-2701 | City of Connell, Mayor |
| Patti Bailie | 265-4259 | City of Mesa, Mayor |
| Lloyd Carnahan | 588-3430 | City of Benton City, Council Member |
| Jerry Beckner | 282-3372 | City of Kahlotus, Mayor |
| Gregg Loney | 524-2505 (W) | Walla Walla County, Commissioner |
| Jerry Cummins | 525-8848 | City of Walla Walla, Council Member |
| Rick Newby | 527-6233 | City of College Place, Council Member |
| Larry Johnson | 337-6371 | City of Waitsburg, Council Member |

| | | |
|----------------------|------------------------------|------------------------------------|
| Elizabeth McCaw | 849-2621 | City of Prescott, Mayor |
| Fred Bennett | 525-3455 | Port of Walla Walla, Commissioner |
| David Carey | 524-2505 (W) 525-9290 (H) | Valley Transit, Board Member |
| Carol Moser | 627-5198 (H) | Washington State Trans. Commission |
| Staff - Mark Kushner | 943-9185 | BFCG, Transportation Director |

- o Ex-officio Member

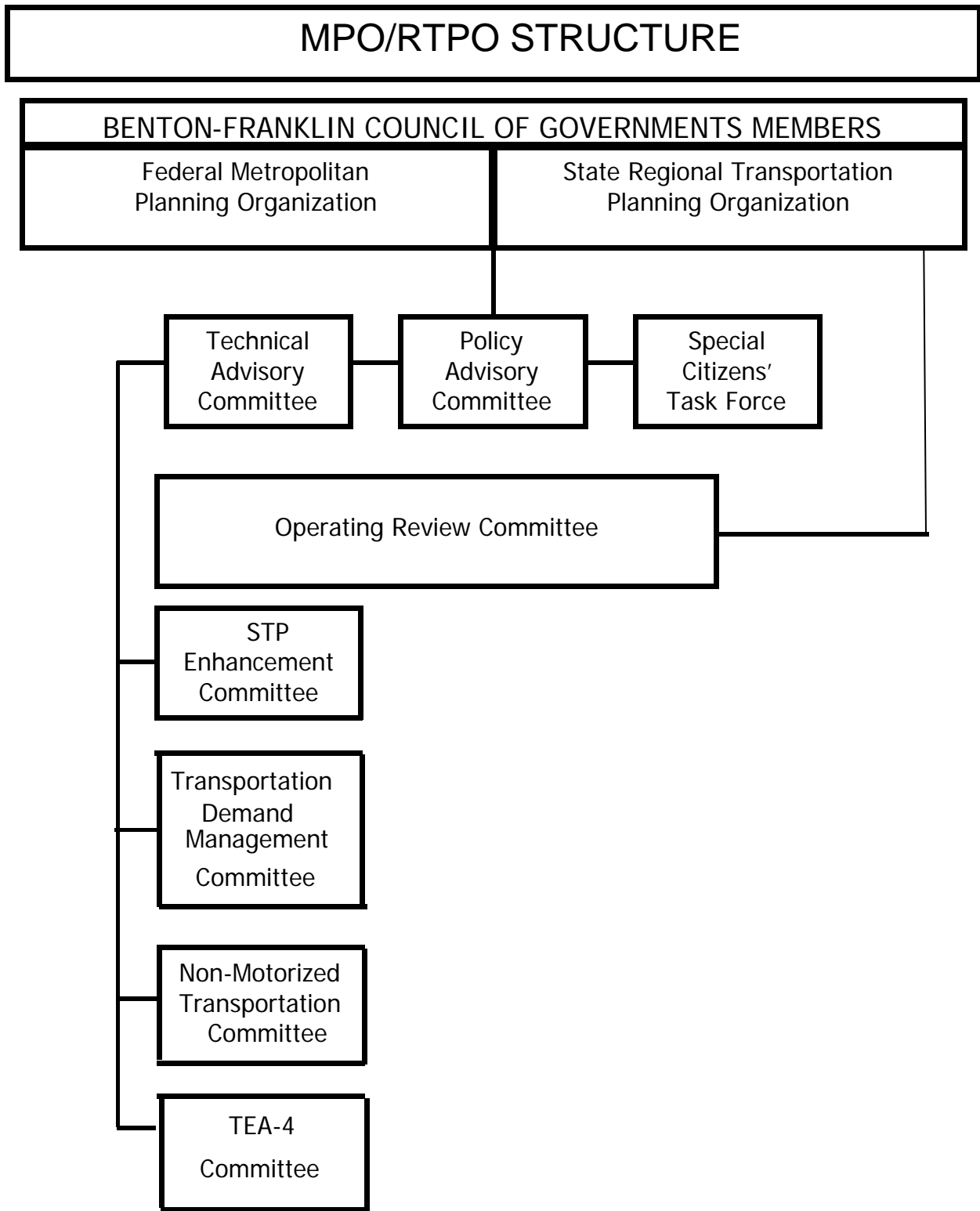
March 18, 2008

TRI-MATS RTPO TECHNICAL ADVISORY COMMITTEE
CALENDAR YEAR 2008 COMMITTEE MEMBERS

| | | |
|---------------------------|------------------|--|
| Tim Fife | 545-3514 | Franklin County Engineer/Public Works Director |
| Ross Dunfee | 736-3084 | Benton County Engineer/Public Works Director |
| Ed Frost | 734-5107 | BFT, Manager of Transit Development |
| Bob Alberts | 545-3446 | City of Pasco, Public Works Director |
| Steve Stairs | 942-7504 | City of Richland, Traffic Engineer |
| Roscoe Slade | 967-7105 | City of West Richland, Public Works Director |
| Randy Hayden | 547-3378 | Port of Pasco, Engineer |
| Bill Preston | 577-1630 | WSDOT Planning Engineer, Yakima |
| Roger Wright | 366-7455 | Port of Benton, Engineering Consultant |
| Dave Penfield | 376-6234 | Fluor Daniel Hanford, Traffic Engineering |
| Larry Peterson | 586-1188 | Port of Kennewick, Director of Planning and Development |
| Peter Beaudry, Chairman | 585-4292 | City of Kennewick, Public Works Director |
| Vacant | | Battelle N.W., |
| L. J. DaCorsi | 786-7336 | City of Prosser, Public Works Director |
| VACANT | | City of Connell |
| Teresa Standridge* | 265-4253 | City of Mesa, Clerk |
| Bob Spink | 946-1581 | City of Benton City, Engineering Consultant |
| Sharon McCaleb* | 282-3372 | City of Kahlotus, City Clerk |
| Randy Glaeser | 524-2711 | Walla Walla County Engineer/Public Works Director |
| Wrandoll Morua | 527-4537 | City of Walla Walla, City Engineer |
| Paul Hartwig | 529-1200 | City of College Place |
| Randy Hinchliffe | 337-6371 | City of Waitsburg, Clerk |
| Steve Myers | | City of Prescott, Public Works Director |
| Paul Gerola | 525-3100 | Port of Walla Walla, Economic Development Director |
| Dick Fondahn, Vice Chair. | 525-9140 ext. 12 | Valley Transit, Transit Manager |
| Mark Kushner | 943-9185 | BFCG/Staff, Transportation Director |
| **Bill Wiebe | 705-7965 | WSDOT Headquarters, Olympia (Planning) |
| **Jerry Ayers | 705-7912 | WSDOT Headquarters, Olympia (Transit) |
| ** Roger Arms | 577-1780 | WSDOT Yakima (Local Programs) |

* City Clerk

** Ex-Officio Members



Unfunded Planning Studies and Projects (Unranked)

1. Amtrak Passenger Service Study
Conduct a study to evaluate the need for passenger service from Walla Walla/Pasco to Auburn.
2. Evaluate/implement US 395 Study recommendations for increased travel efficiencies (US 395 Corridor Study, April 1995) Includes Blue Bridge analysis.
3. Update Lewis Street/Sylvester Street/US 395 Interchange Study
4. Stampede Pass Freight Issue Study
5. Columbia River Crossing Bridge Study (CRCS)
6. I-82 Interchange Red Mountain Study Phase 1- 6.

Acronyms List

Acronym: Stands For:

| | |
|------------|---|
| BFCG | Benton Franklin Council of Governments |
| BFT | Ben Franklin Transit |
| CCB | Columbia Center Blvd. |
| CRT | Community Round Table |
| CTR | Commute Trip Reduction |
| CY | Calendar Year |
| FHWA | Federal Highway Administration |
| FMSIB | Freight Mobility Strategic Investment Board |
| FTA | Federal Transit Administration |
| FTE | Full Time Employee |
| GIS | Geological Informational System |
| GMA | Growth Management Act |
| LOS | Level of Service |
| MPO | Metropolitan Planning Organization |
| PAC | Policy Advisory Committee |
| PTBA | Public Transportation Benefit Area |
| RTP | Regional Transportation Plan |
| RTPO | Regional Transportation Planning Organization |
| SAFETEA-LU | Safe, Accountable, Flexible, Efficient Transportation Equity Act – Land Use |
| STP | Surface Transportation Program |
| SOV | Single Occupant Vehicle |
| TAC | Technical Advisory Committee |
| TEA-4 | Transportation Equity Act |
| TDM | Transportation Demand Management |
| TIP | Transportation Improvement Program |
| Tri-MATS | Tri-Cities Metropolitan Area Transportation Study |
| UPWP | Unified Planning Work Program |
| VMT | Vehicle Miles of Travel |
| WA-Trans | Washington Transportation Framework Project |
| WSDOT | Washington State Department of Transportation |
| WTP | Washington Transportation Plan |