

Maintenance Accountability Process

Activity Service Level Targets and Service Levels Delivered

Southwest Region - CY 2006

Activity	1.0		1.9		2.0		2.9		3.0		3.9		4.0		4.9		5.0		5.9	
	+	A	-		+	B	-		+	C	-		+	D	-		+	F	-	
Group - 1 Roadway Maintenance and Operations																				
1A1 Pavement Patching & Repair*		✓		⊙																
1A2 Crack Sealing*					✓					⊙										
1A3 Shoulder Maintenance					✓				⊙											
1A4 Sweeping and Cleaning		✓		⊙																
1B1 Safety Patrol									⊙	✓										
Group - 2 Drainage Maintenance and Slope Repair																				
2A1 Maintain Ditches			✓		⊙															
2A2 Maintain Culverts					✓				⊙											
2A3 Maintain Catch Basins and Inlets					✓	⊙														
2A4 Maintain Detention/Retention Basins									✓	⊙										
2A5 Slope Repair		✓			⊙															
Group - 3 Roadside and Vegetation Management																				
3A1 Litter Pickup										✓			⊙							
3A2 Noxious Weed Control		✓			⊙															
3A3 Nuisance Vegetation Control		✓				⊙														
3A4 Control of Vegetation Obstructions		✓				⊙														
3A5 Landscape Maintenance										⊙	✓									
Group - 4 Bridge and Urban Tunnel Maintenance and Operations																				
4A1 Bridge Deck Repair		✓					⊙													
4A2 Structural Bridge Repair			✓						⊙											
4A3 Bridge Cleaning						✓			⊙											
Group - 5 Snow and Ice Control Operations																				
5B1 Snow and Ice Control Operations		✓							⊙											
Group - 6 Traffic Control Maintenance and Operations																				
6A1 Pavement Striping Maintenance***					✓			⊙												
6A2 Raised/Depressed Pavement Marker Maint.					⊙	✓														
6A3 Pavement Marking Maintenance								✓	⊙											
6A4 Regulatory Sign Maintenance								✓	⊙											
6A5 Guide Sign Maintenance							✓	⊙												
6A6 Guidepost Maintenance									✓	⊙										
6A7 Guardrail Maintenance		✓	⊙																	
6B1 Traffic Signal Systems									⊙					✓						
6B2 Highway Lighting Systems					⊙									✓						
6B3 Intelligent Transportation Systems						✓	⊙													
Group - 7 Rest Area Operations																				
7B1 Rest Area Operations					✓	⊙														

*Data collected from WSPMS

*** Revised Performance measure with revised target

Key

⊙ Current Law Budget Service Level Commitment



Service Level Currently Delivered by WSDOT

Maintenance Accountability Process

Activity Service Level Targets and Service Levels Delivered

Southwest Area 1 - CY 2006

Activity	1.0		1.9		2.0		2.9		3.0		3.9		4.0		4.9		5.0		5.9	
	+	A	-		+	B	-		+	C	-		+	D	-		+	F	-	
Group - 1 Roadway Maintenance and Operations																				
1A1 Pavement Patching & Repair*		✓		⊙																
1A2 Crack Sealing*							✓				⊙									
1A3 Shoulder Maintenance		✓							⊙											
1A4 Sweeping and Cleaning			✓	⊙																
1B1 Safety Patrol									✓⊙											
Group - 2 Drainage Maintenance and Slope Repair																				
2A1 Maintain Ditches			✓	⊙																
2A2 Maintain Culverts			✓							⊙										
2A3 Maintain Catch Basins and Inlets							✓⊙													
2A5 Slope Repair					✓	⊙														
Group - 3 Roadside and Vegetation Management																				
3A1 Litter Pickup															✓⊙					
3A2 Noxious Weed Control		✓					⊙													
3A3 Nuisance Vegetation Control			✓					⊙												
3A4 Control of Vegetation Obstructions			✓					⊙												
Group - 4 Bridge and Urban Tunnel Maintenance and Operations																				
4A1 Bridge Deck Repair					✓		⊙													
4A3 Bridge Cleaning							✓			⊙										
Group - 5 Snow and Ice Control Operations																				
5B1 Snow and Ice Control Operations		✓							⊙											
Group - 6 Traffic Control Maintenance and Operations																				
6A2 Raised/Depressed Pavement Marker Maint.							✓⊙													
6A3 Pavement Marking Maintenance							✓				⊙									
6A6 Guidepost Maintenance											⊙			✓						
6A7 Guardrail Maintenance		✓⊙																		

*Data collected from WSPMS

*** Revised Performance measure with revised target

Key

- ⊙ Current Law Budget Service Level Commitment
- ✓ Service Level Currently Delivered by WSDOT

Maintenance Accountability Process

Activity Service Level Targets and Service Levels Delivered

Southwest Area 2 - CY 2006

Activity	1.0		1.9		2.0		2.9		3.0		3.9		4.0		4.9		5.0		5.9	
	+	A	-		+	B	-		+	C	-		+	D	-		+	F	-	
Group - 1 Roadway Maintenance and Operations																				
1A1 Pavement Patching & Repair*	✓				⊙															
1A2 Crack Sealing*		✓									⊙									
1A3 Shoulder Maintenance					✓				⊙											
1A4 Sweeping and Cleaning	✓				⊙															
1B1 Safety Patrol						✓			⊙											
Group - 2 Drainage Maintenance and Slope Repair																				
2A1 Maintain Ditches						✓	⊙													
2A2 Maintain Culverts						✓				⊙										
2A3 Maintain Catch Basins and Inlets						✓	⊙													
2A5 Slope Repair		✓				⊙														
Group - 3 Roadside and Vegetation Management																				
3A1 Litter Pickup											✓				⊙					
3A2 Noxious Weed Control					✓	⊙														
3A3 Nuisance Vegetation Control					✓		⊙													
3A4 Control of Vegetation Obstructions	✓						⊙													
Group - 4 Bridge and Urban Tunnel Maintenance and Operations																				
4A1 Bridge Deck Repair	✓						⊙													
4A3 Bridge Cleaning						✓				⊙										
Group - 5 Snow and Ice Control Operations																				
5B1 Snow and Ice Control Operations		✓							⊙											
Group - 6 Traffic Control Maintenance and Operations																				
6A2 Raised/Depressed Pavement Marker Maint.							⊙					✓								
6A3 Pavement Marking Maintenance										✓		⊙								
6A6 Guidepost Maintenance												✓	⊙							
6A7 Guardrail Maintenance		✓	⊙																	

*Data collected from WSPMS

*** Revised Performance measure with revised target

Key

- ⊙ Current Law Budget Service Level Commitment
- ✓ Service Level Currently Delivered by WSDOT

Maintenance Accountability Process

Activity Service Level Targets and Service Levels Delivered

Southwest Area 3 - CY 2006

Activity	1.0		1.9		2.0		2.9		3.0		3.9		4.0		4.9		5.0		5.9	
	+	A	-		+	B	-		+	C	-		+	D	-		+	F	-	
Group - 1 Roadway Maintenance and Operations																				
1A1 Pavement Patching & Repair*					⊙		✓													
1A2 Crack Sealing*							✓					⊙								
1A3 Shoulder Maintenance									⊙	✓										
1A4 Sweeping and Cleaning		✓			⊙															
1B1 Safety Patrol									⊙					✓						
Group - 2 Drainage Maintenance and Slope Repair																				
2A1 Maintain Ditches	✓					⊙														
2A2 Maintain Culverts						✓				⊙										
2A3 Maintain Catch Basins and Inlets	✓					⊙														
2A5 Slope Repair	✓					⊙														
Group - 3 Roadside and Vegetation Management																				
3A1 Litter Pickup											✓				⊙					
3A2 Noxious Weed Control	✓					⊙														
3A3 Nuisance Vegetation Control	✓						⊙													
3A4 Control of Vegetation Obstructions		✓					⊙													
Group - 4 Bridge and Urban Tunnel Maintenance and Operations																				
4A1 Bridge Deck Repair	✓						⊙													
4A3 Bridge Cleaning									✓	⊙										
Group - 5 Snow and Ice Control Operations																				
5B1 Snow and Ice Control Operations	✓								⊙											
Group - 6 Traffic Control Maintenance and Operations																				
6A2 Raised/Depressed Pavement Marker Maint.						✓	⊙													
6A3 Pavement Marking Maintenance											✓	⊙								
6A6 Guidepost Maintenance											⊙	✓								
6A7 Guardrail Maintenance		✓	⊙																	

*Data collected from WSPMS

*** Revised Performance measure with revised target

Key

- ⊙ Current Law Budget Service Level Commitment
- ✓ Service Level Currently Delivered by WSDOT

Maintenance Accountability Process

Activity Service Level Targets and Service Levels Delivered

Southwest Area 4 - CY 2006

Activity	1.0		1.9		2.0		2.9		3.0		3.9		4.0		4.9		5.0		5.9	
	+	A	-		+	B	-		+	C	-		+	D	-		+	F	-	
Group - 1 Roadway Maintenance and Operations																				
1A1 Pavement Patching & Repair*	✓				⊙															
1A2 Crack Sealing*					✓						⊙									
1A3 Shoulder Maintenance			✓						⊙											
1A4 Sweeping and Cleaning	✓				⊙															
1B1 Safety Patrol									⊙	✓										
Group - 2 Drainage Maintenance and Slope Repair																				
2A1 Maintain Ditches		✓				⊙														
2A2 Maintain Culverts						✓				⊙										
2A3 Maintain Catch Basins and Inlets					✓		⊙													
2A5 Slope Repair						✓	⊙													
Group - 3 Roadside and Vegetation Management																				
3A1 Litter Pickup									✓						⊙					
3A2 Noxious Weed Control		✓				⊙														
3A3 Nuisance Vegetation Control		✓					⊙													
3A4 Control of Vegetation Obstructions		✓					⊙													
Group - 4 Bridge and Urban Tunnel Maintenance and Operations																				
4A1 Bridge Deck Repair	✓						⊙													
4A3 Bridge Cleaning						✓				⊙										
Group - 5 Snow and Ice Control Operations																				
5B1 Snow and Ice Control Operations		✓							⊙											
Group - 6 Traffic Control Maintenance and Operations																				
6A2 Raised/Depressed Pavement Marker Maint.						⊙			✓											
6A3 Pavement Marking Maintenance						✓					⊙									
6A6 Guidepost Maintenance						✓					⊙									
6A7 Guardrail Maintenance		⊙	✓																	

*Data collected from WSPMS

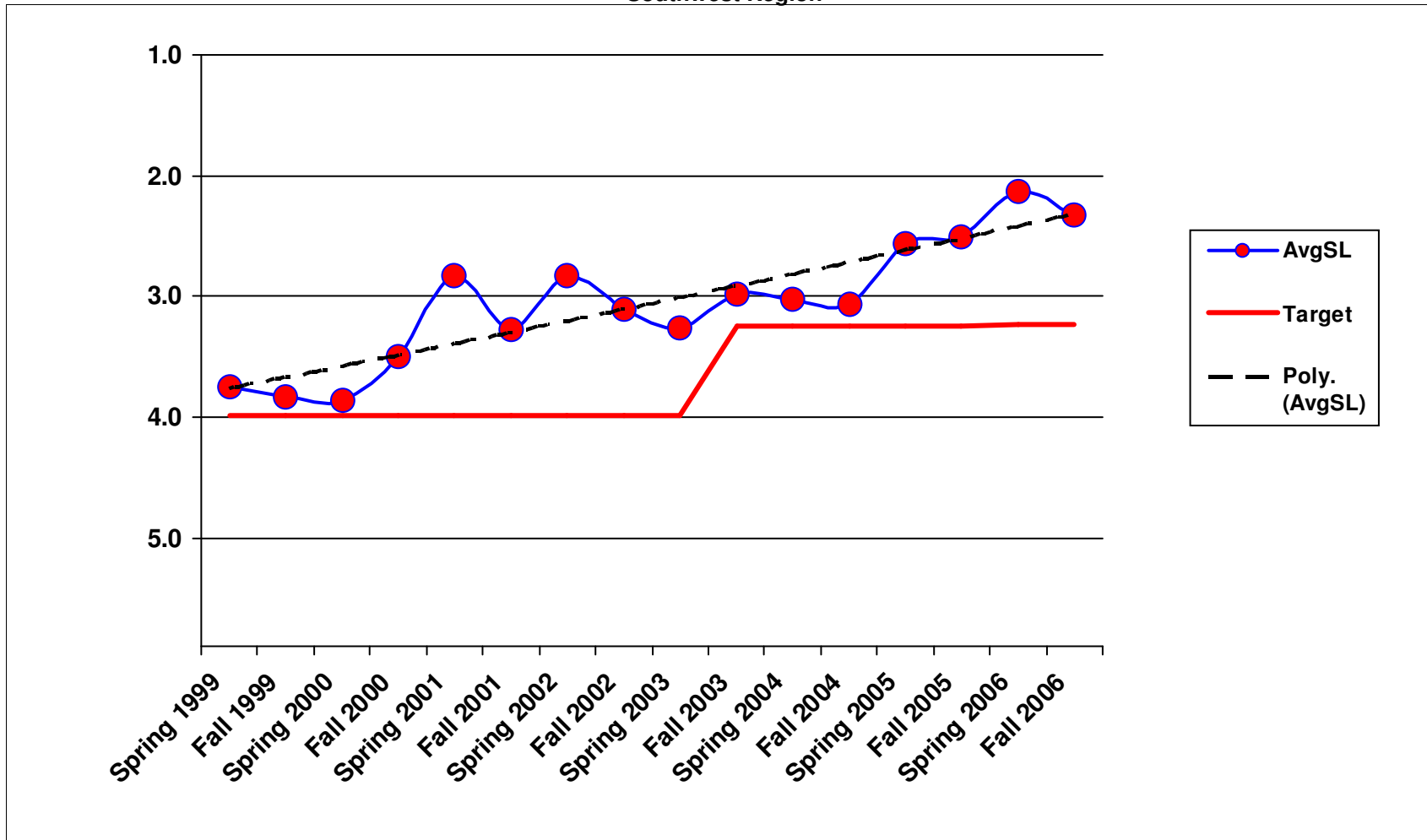
*** Revised Performance measure with revised target

Key

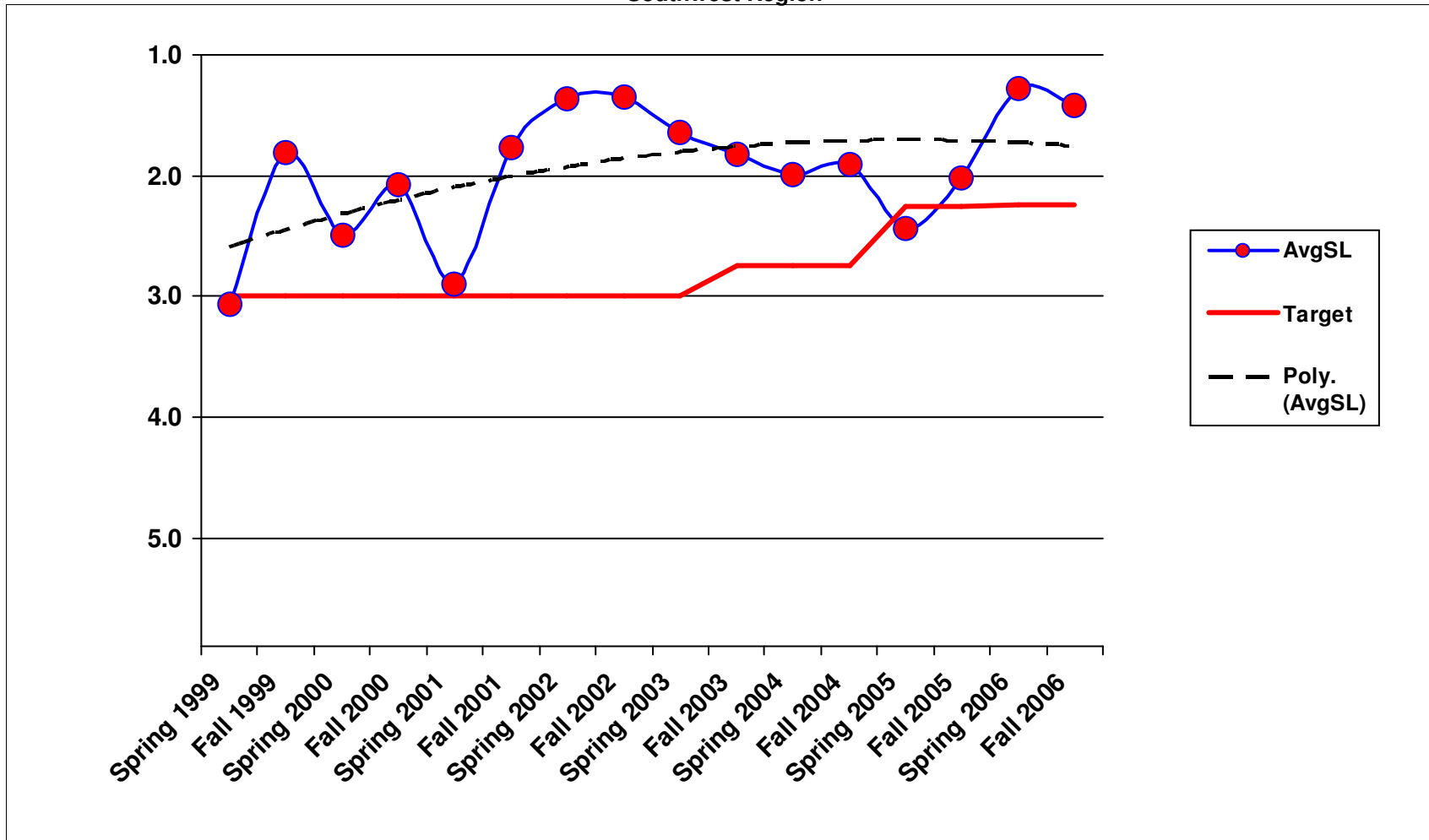
⊙ Current Law Budget Service Level Commitment

✓ Service Level Currently Delivered by WSDOT

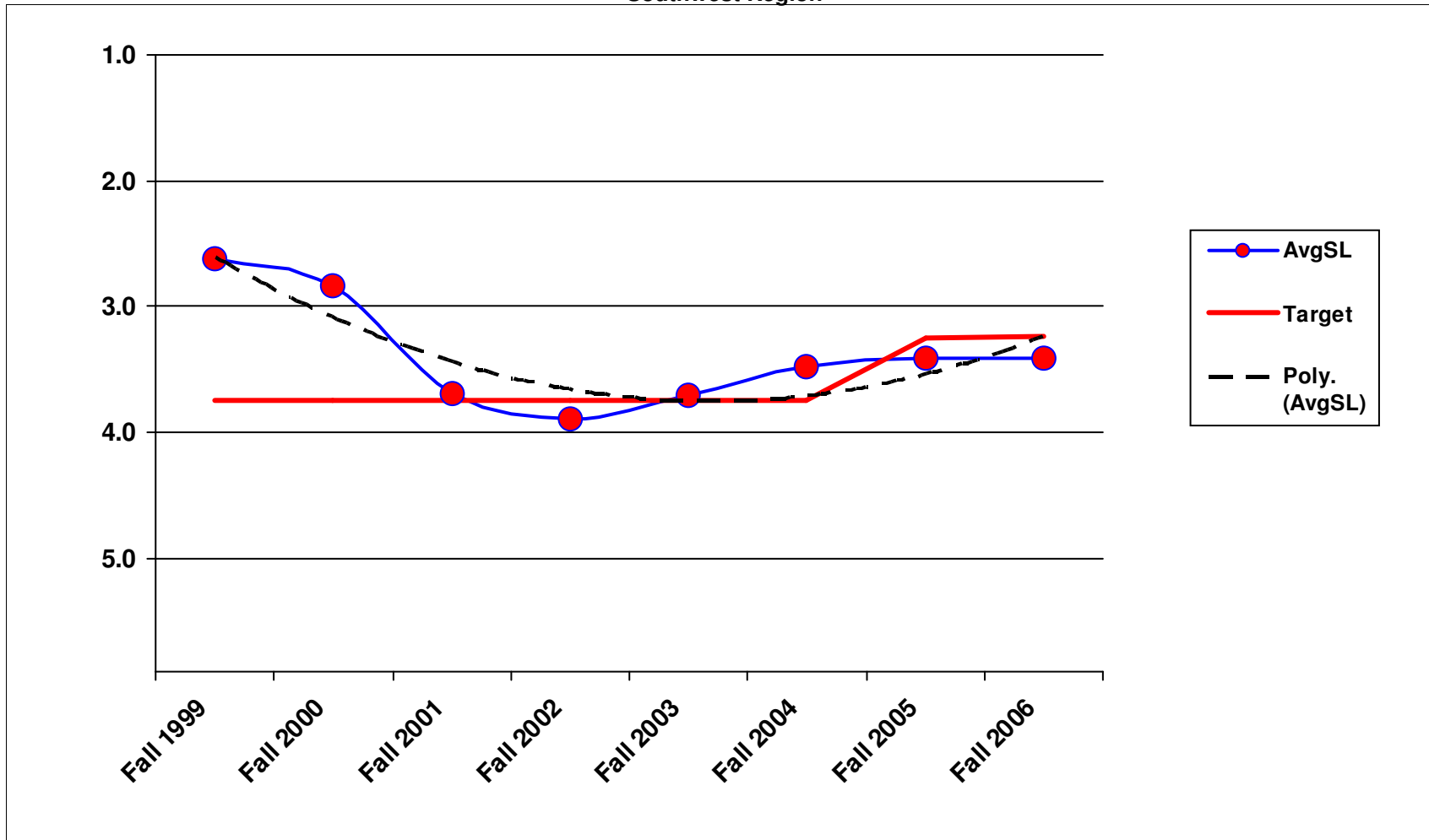
1A3 - Shoulder Maintenance Southwest Region



1A4 - Sweeping and Cleaning
Southwest Region

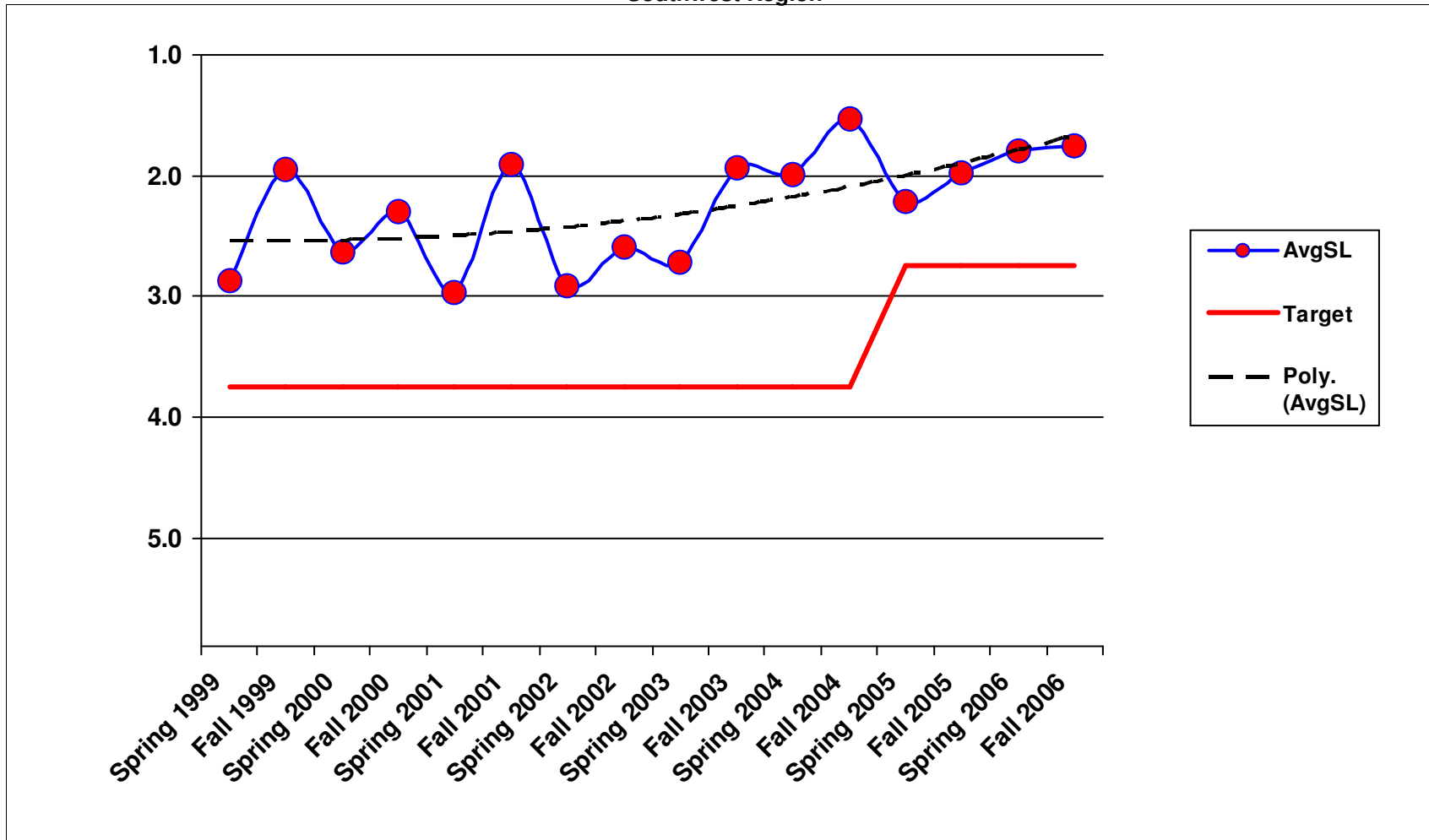


1B1 - Safety Patrol
Southwest Region

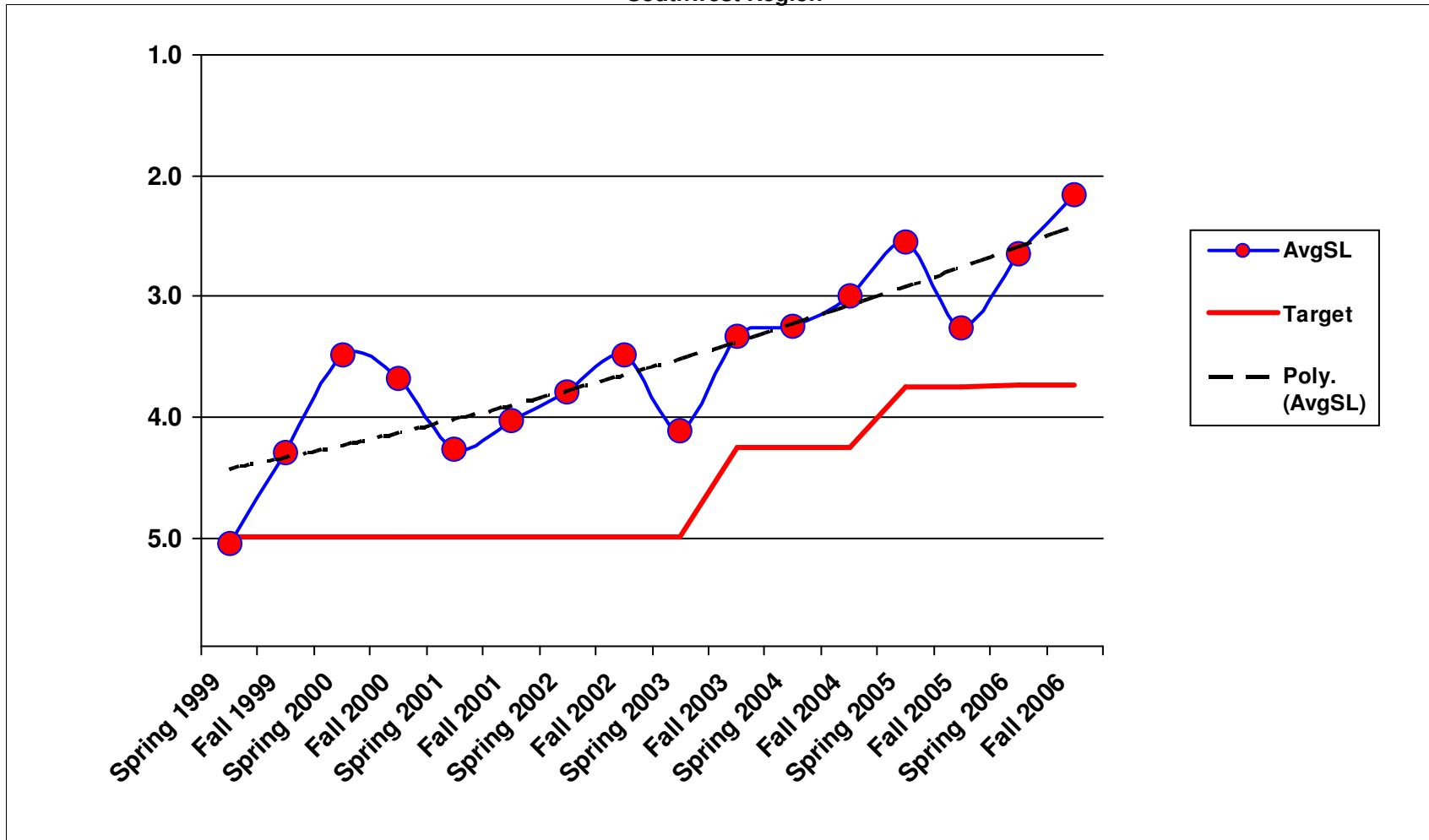


1/23/2007

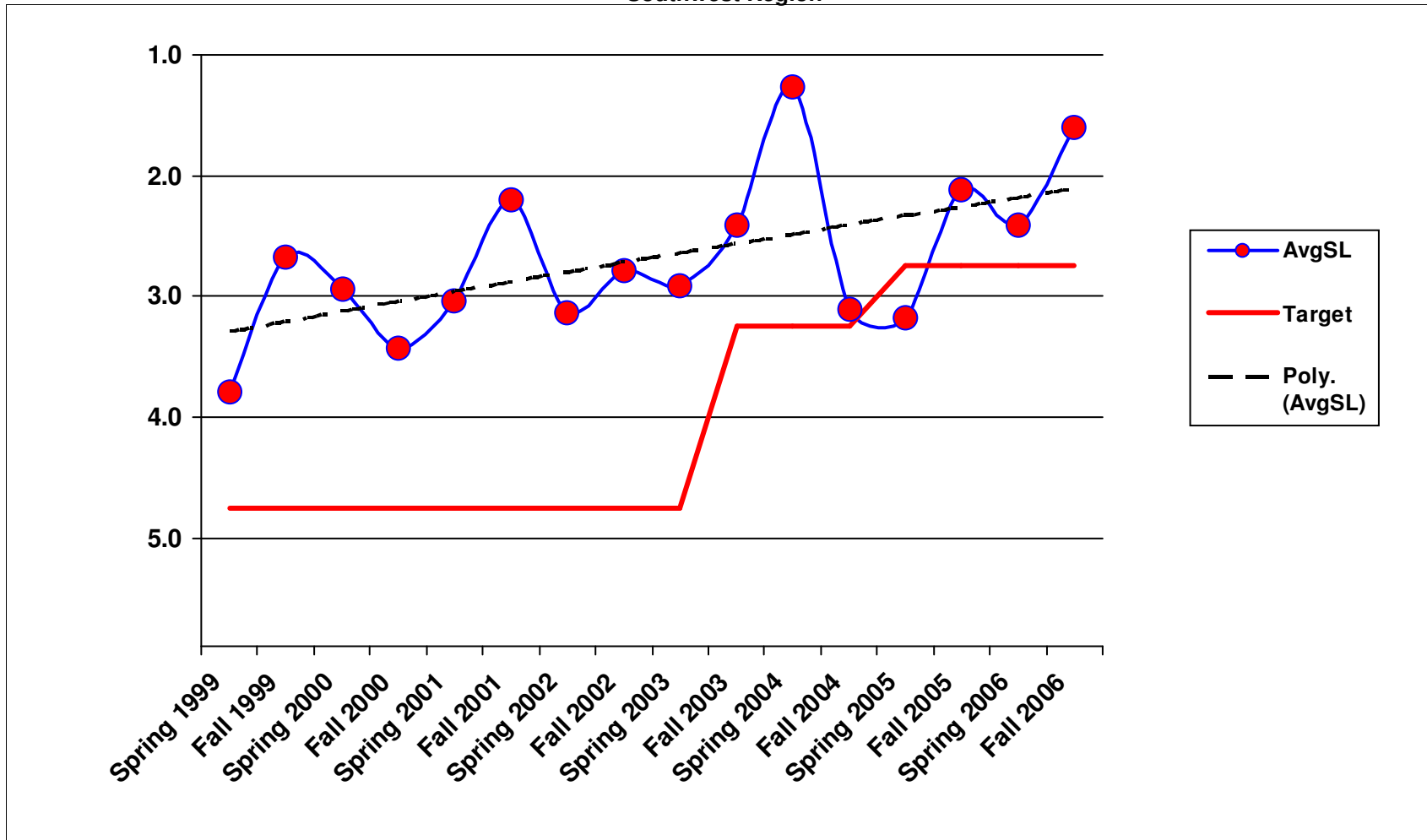
2A1 - Maintain Ditches
Southwest Region



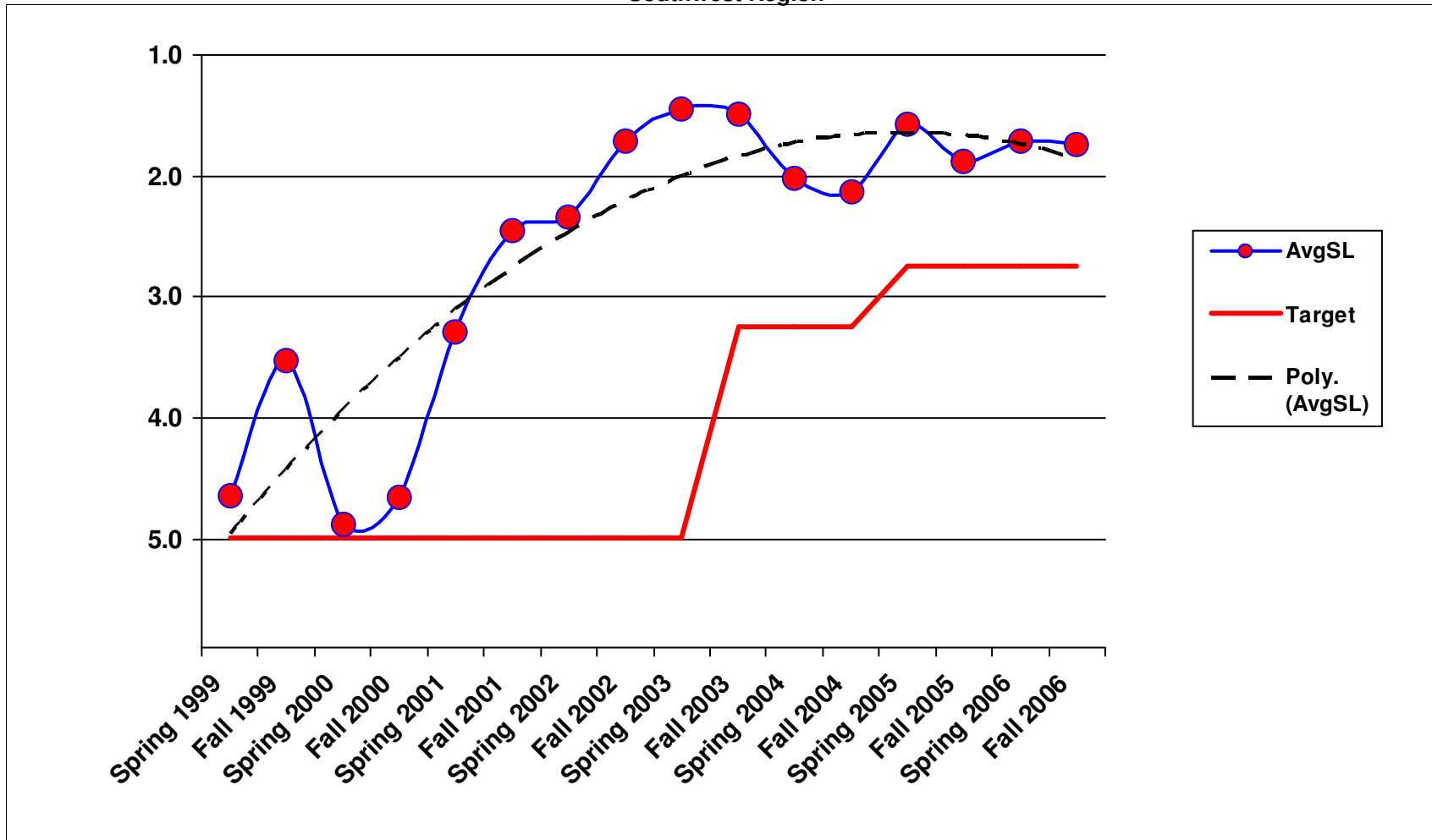
2A2 - Maintain Culverts
Southwest Region



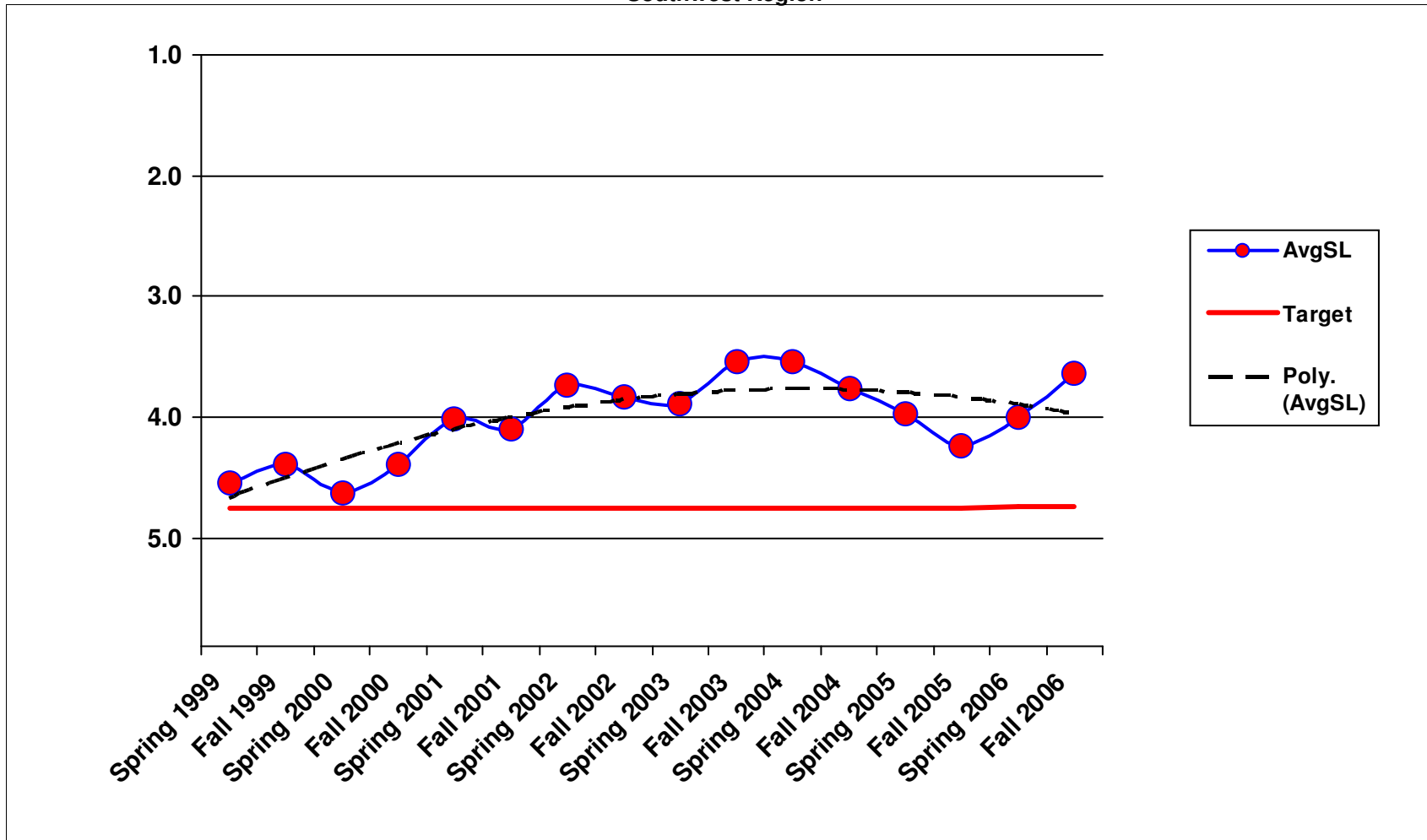
2A3 - Maintain Catch Basins and Inlets
Southwest Region



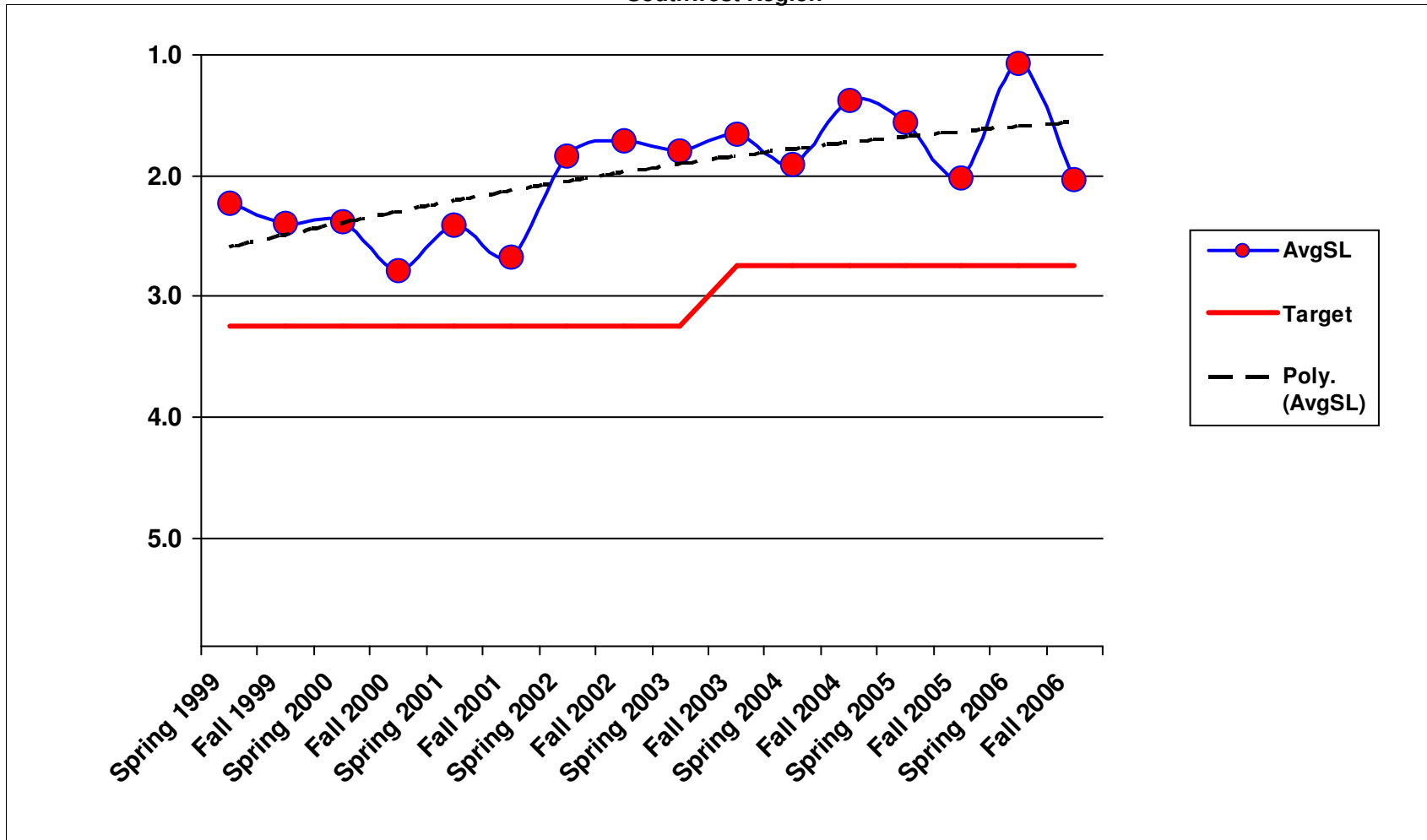
2A5 - Slope Repair
Southwest Region



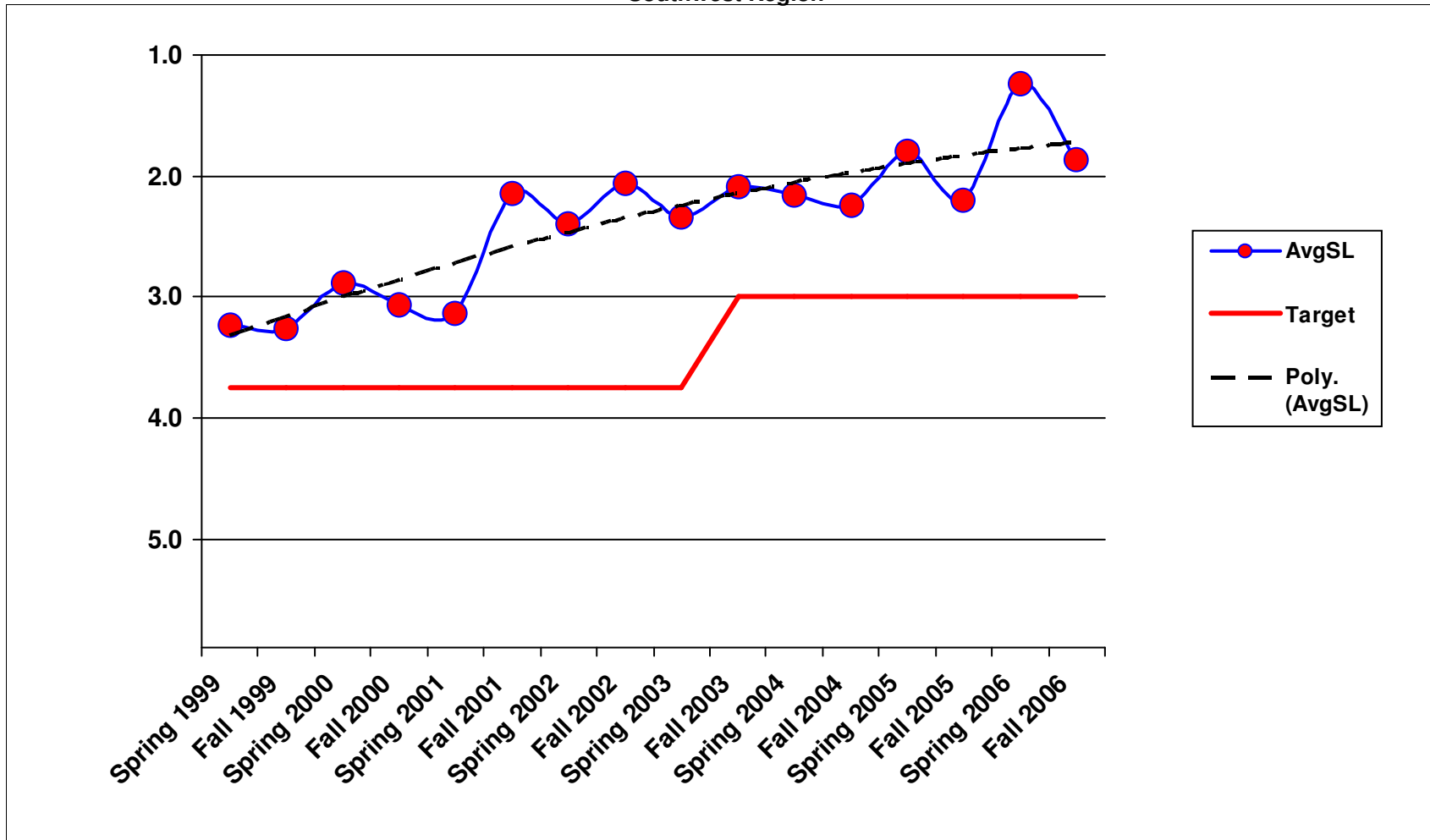
3A1 - Litter Pickup Southwest Region



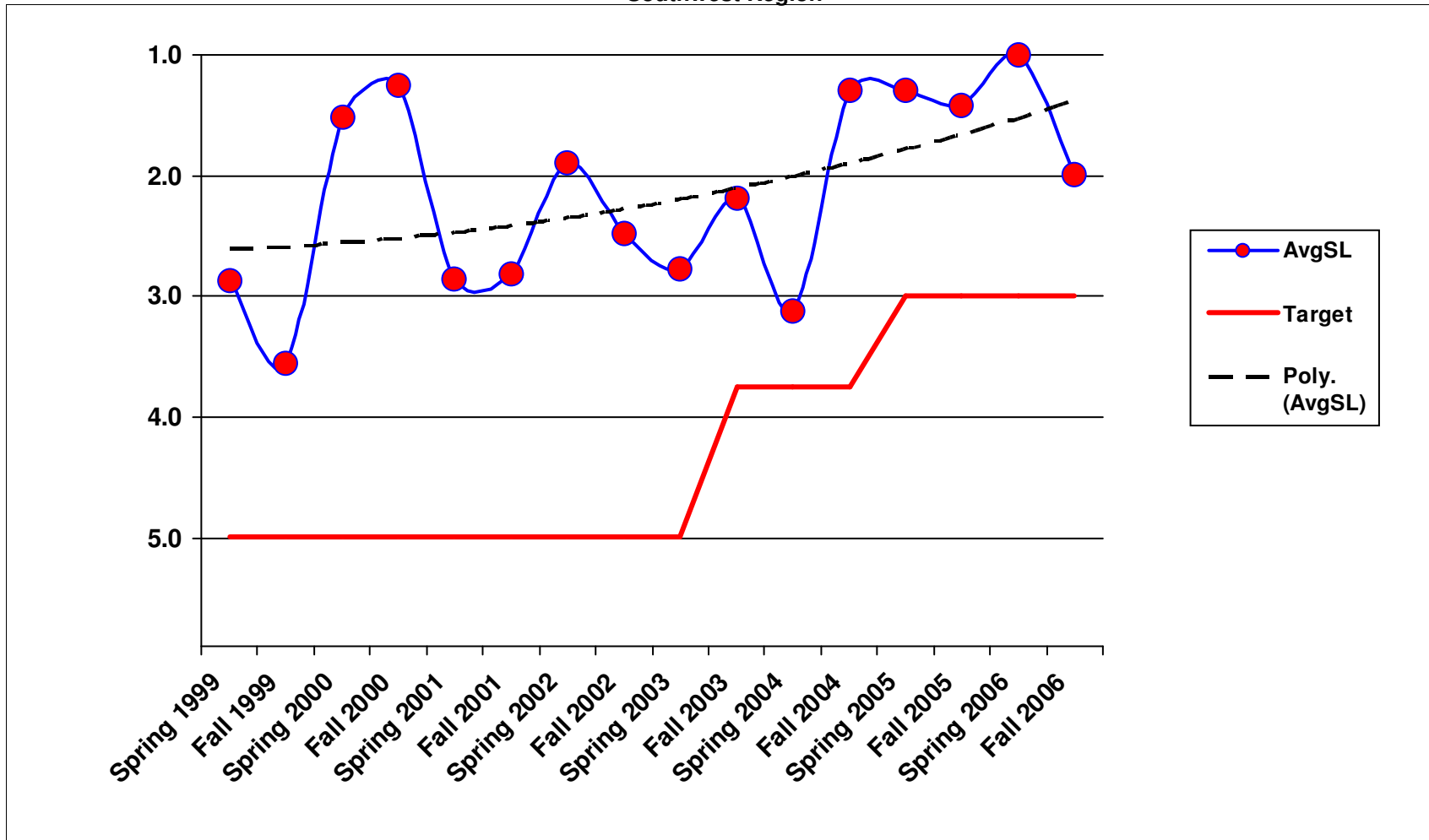
3A2 - Noxious Weed Control Southwest Region



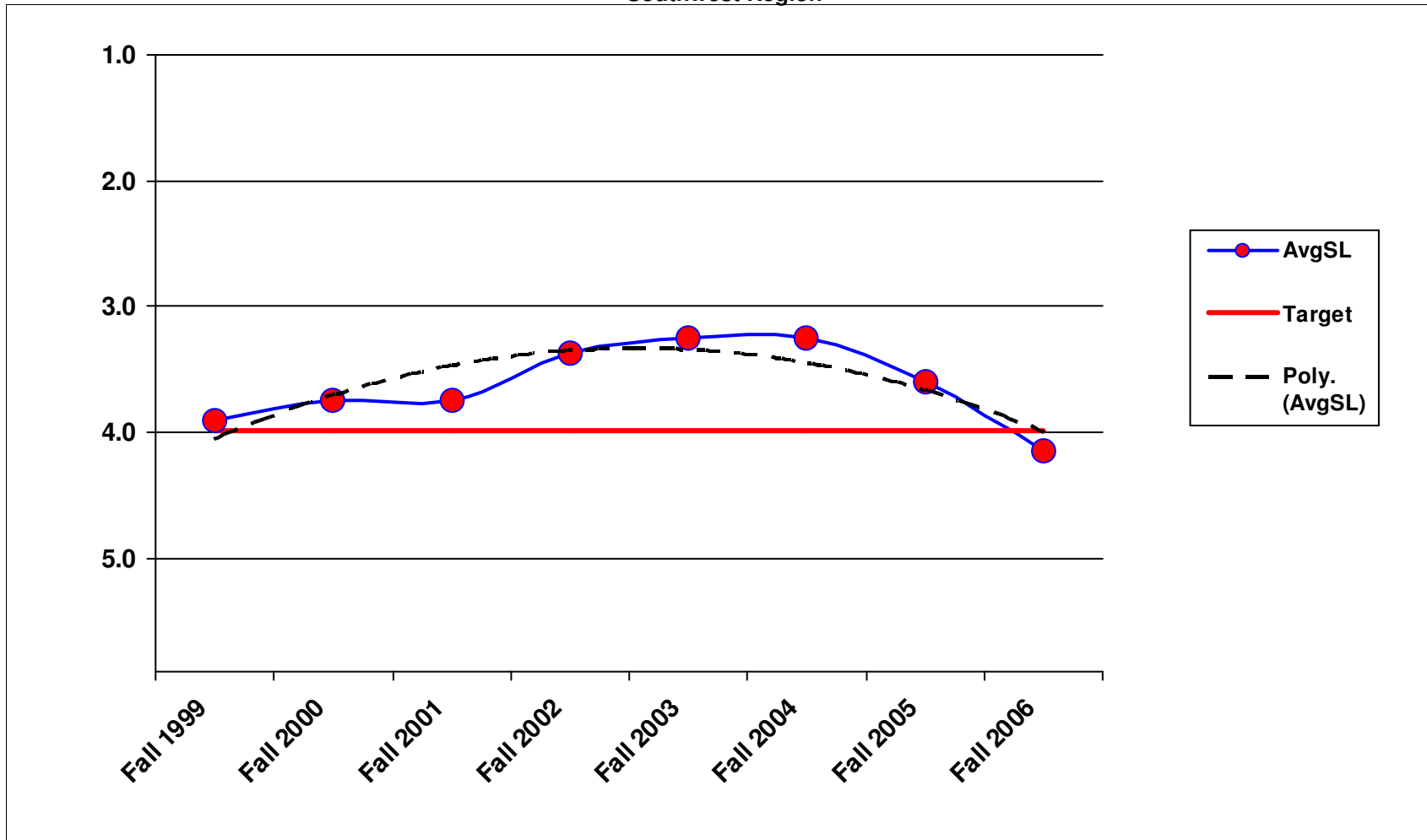
3A3 - Nuisance Vegetation Control Southwest Region



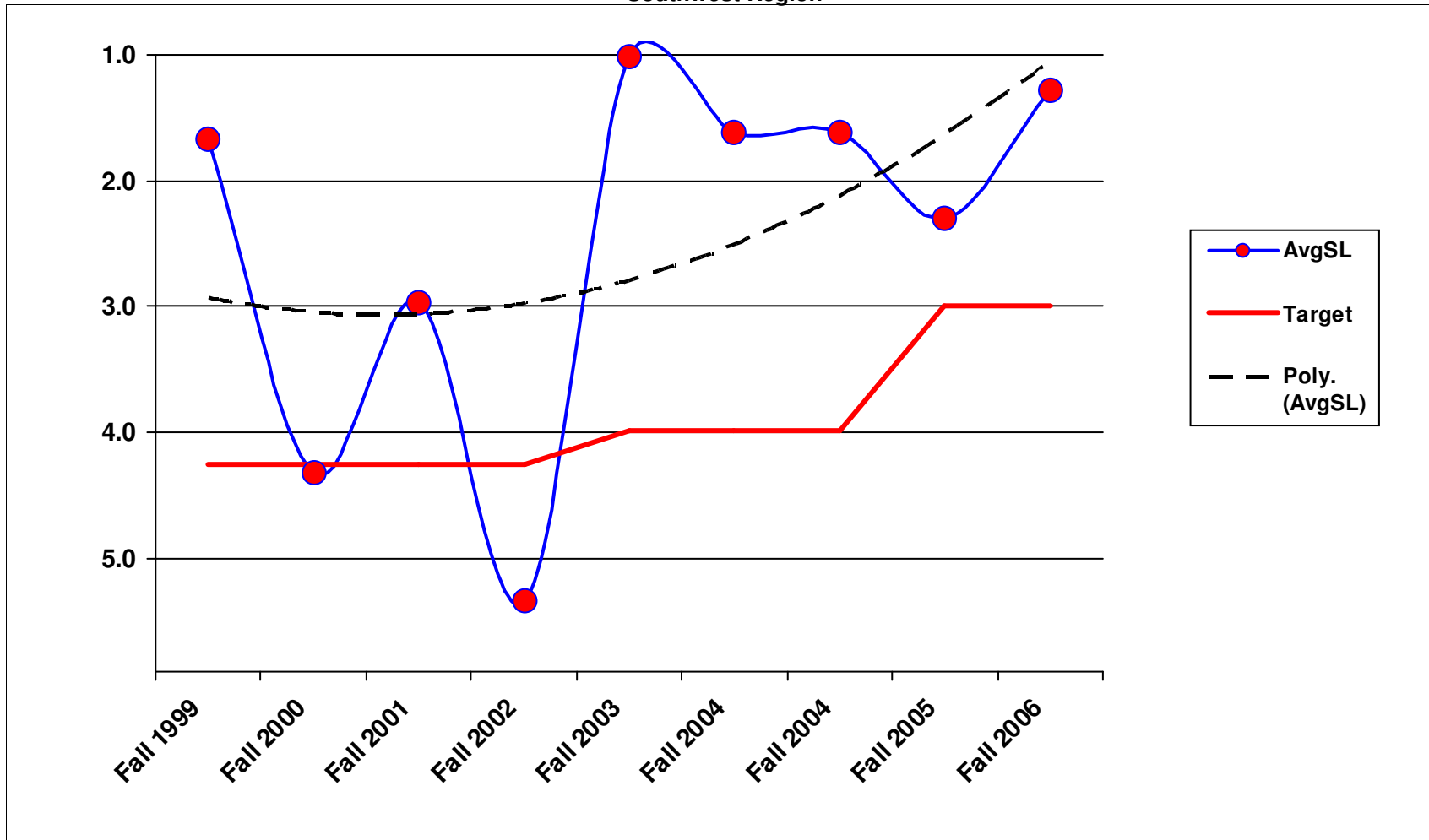
3A4 - Control of Vegetation Obstructions Southwest Region



3A5 - Landscape Maintenance Southwest Region

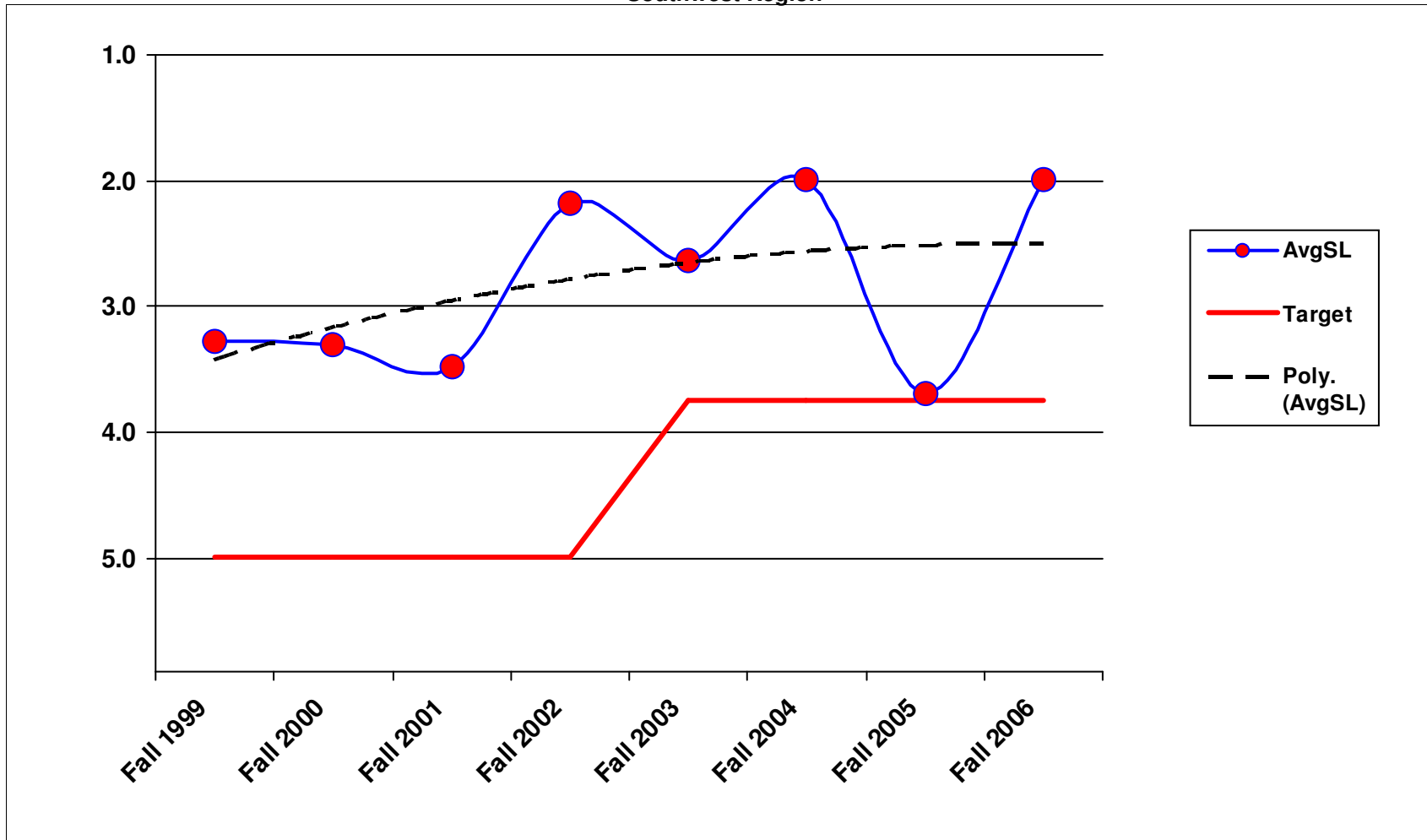


4A1 - Bridge Deck Repair Southwest Region

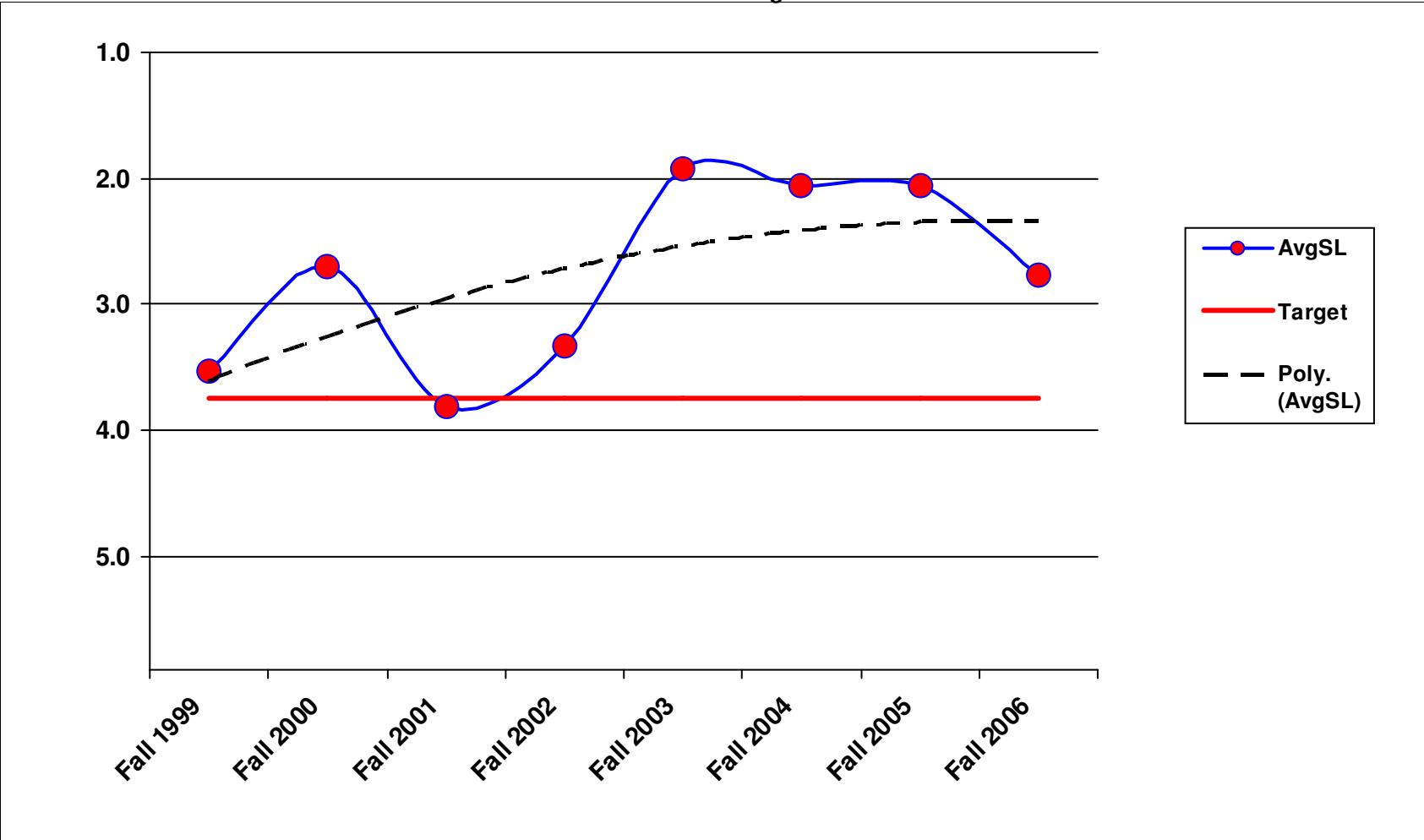


1/23/2007

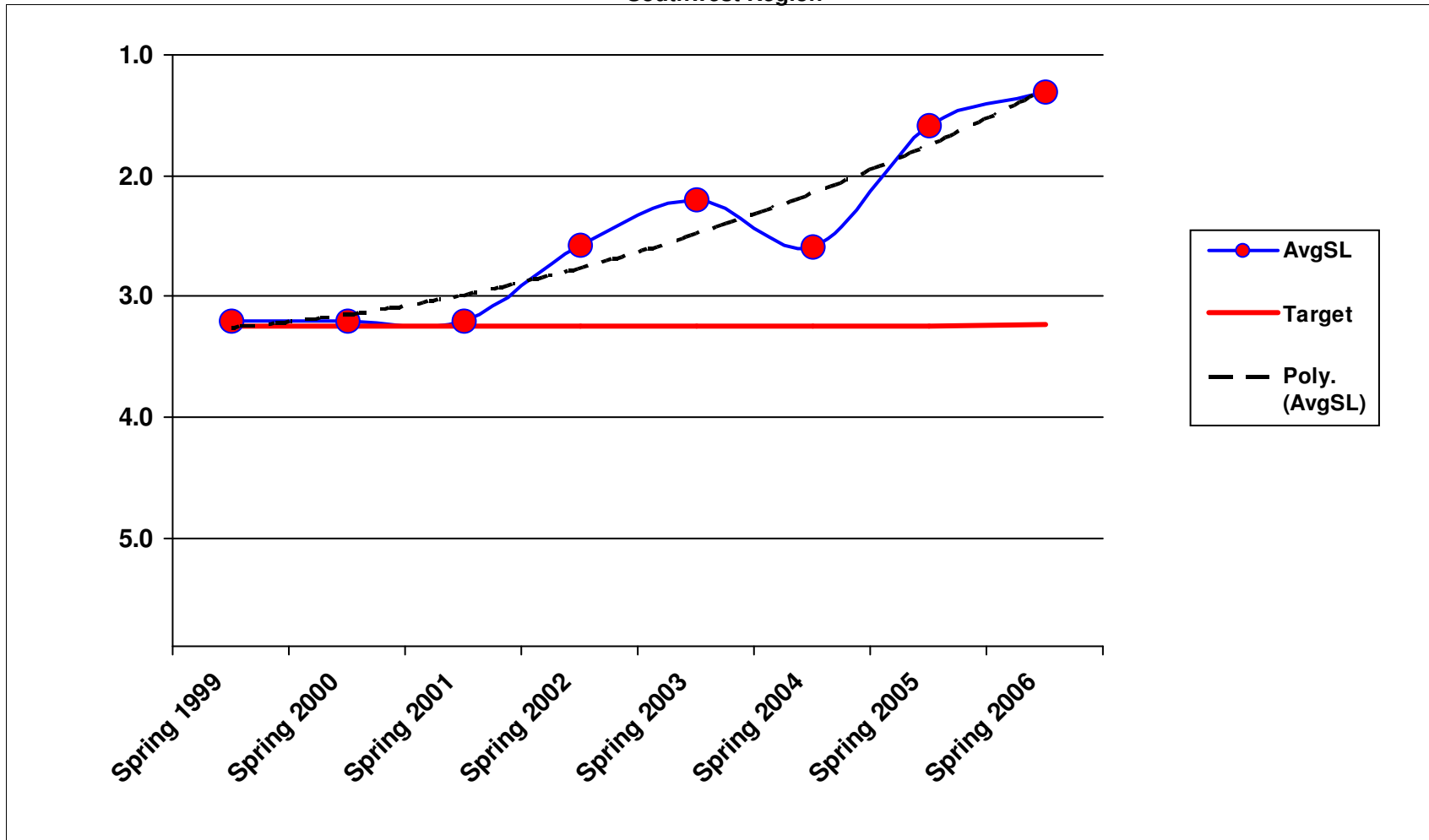
4A2 - Structural Bridge Repair Southwest Region



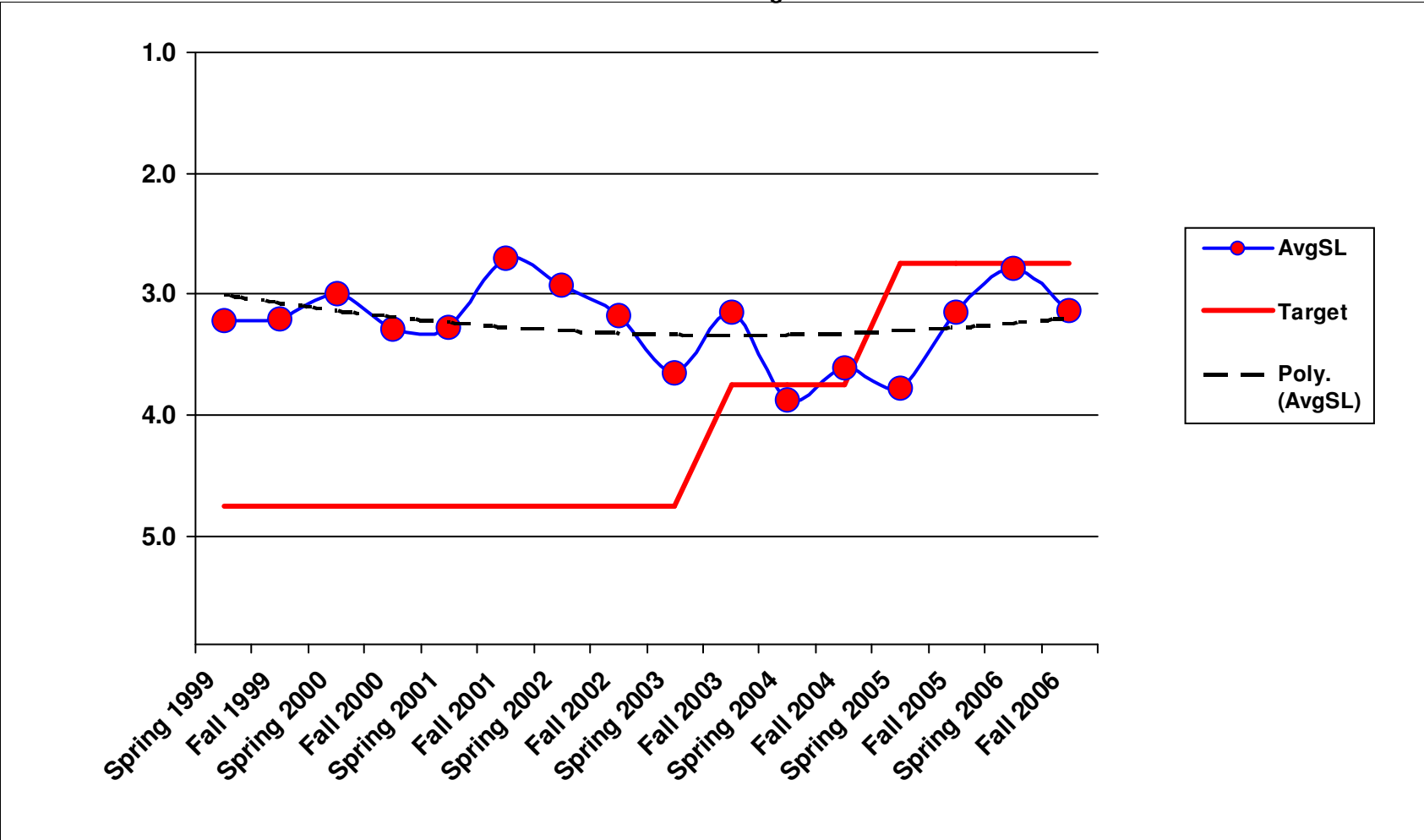
4A3 - Bridge Cleaning
Southwest Region



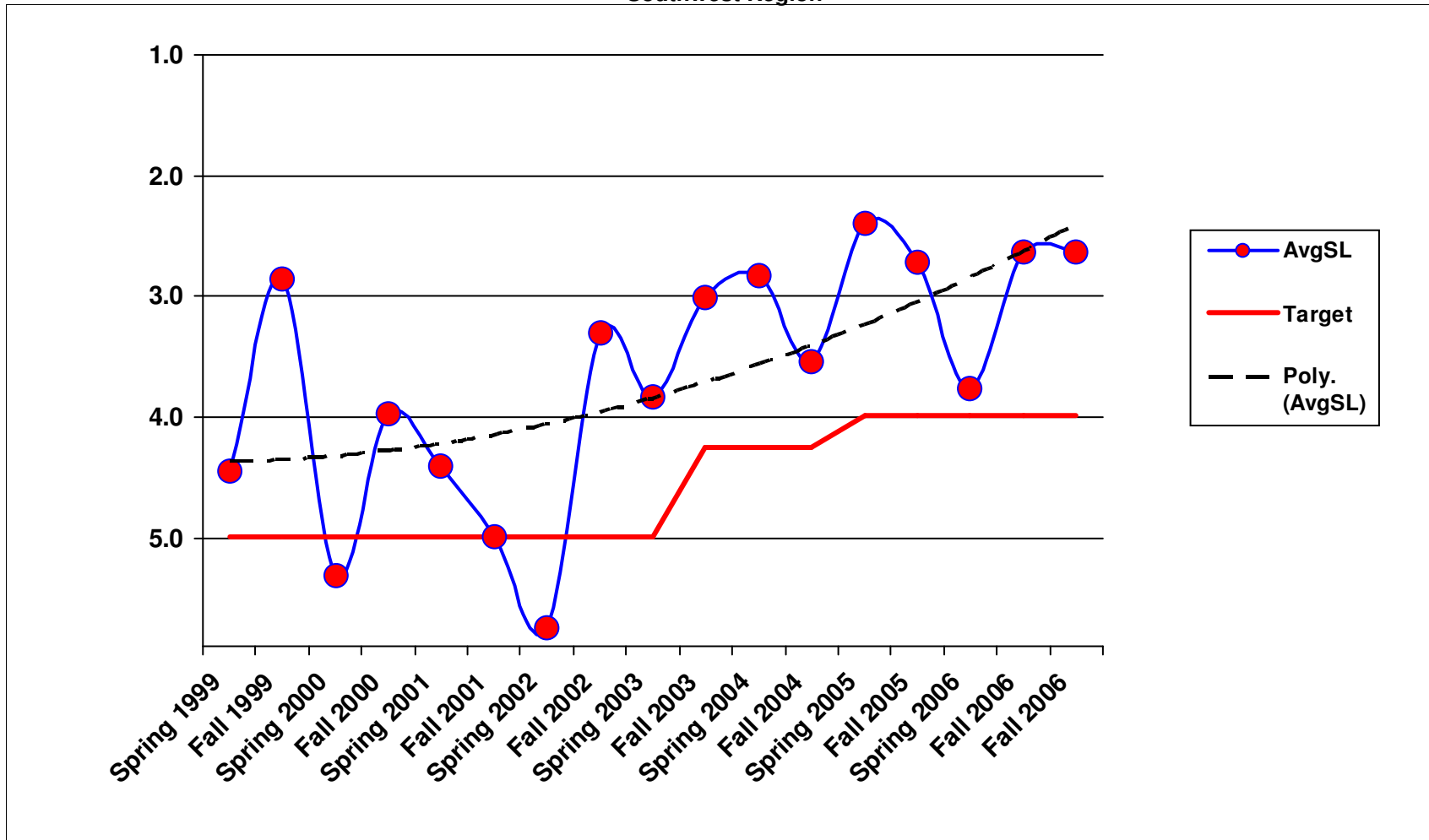
5B1 - Snow and Ice Control Operations Southwest Region



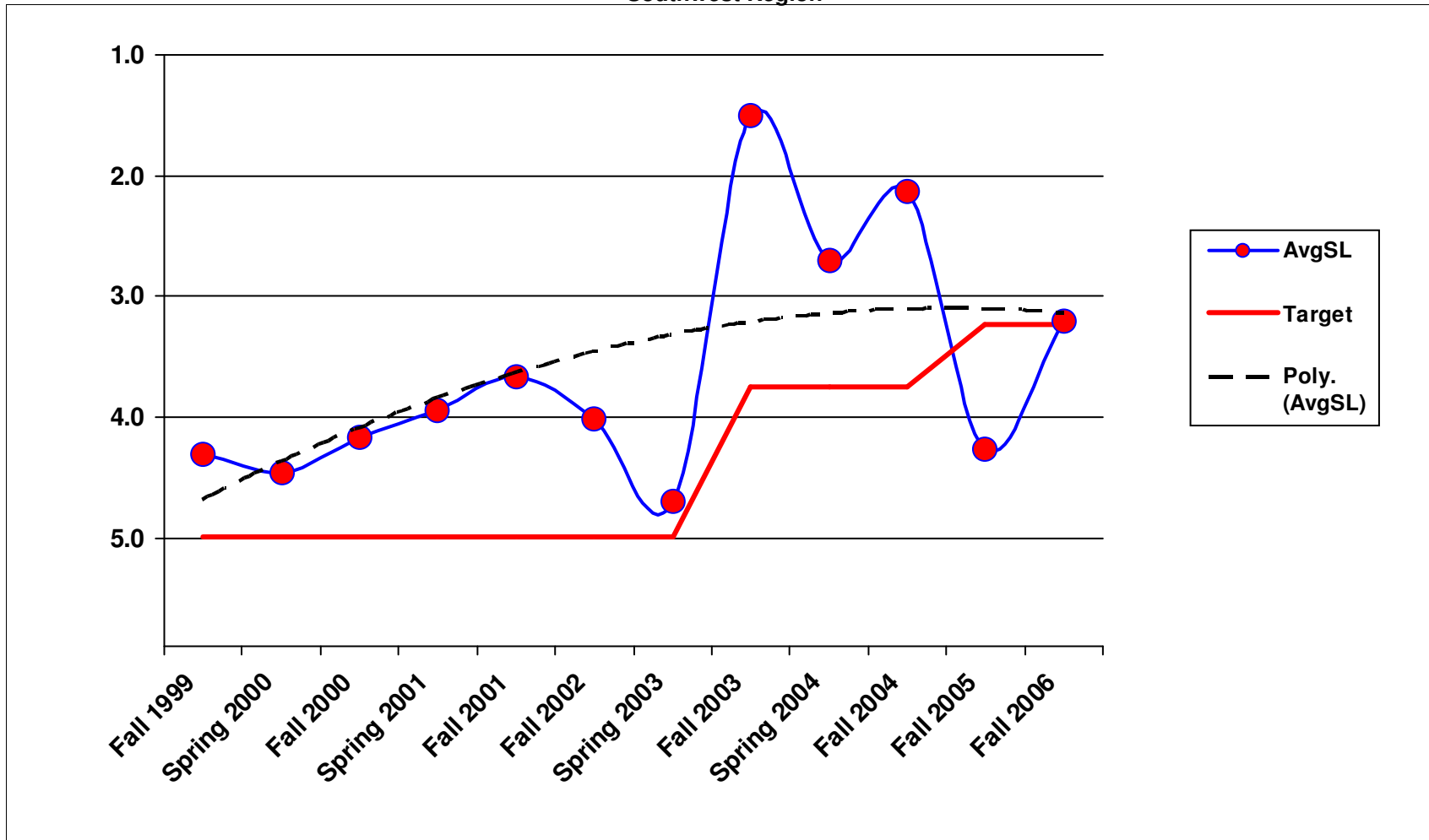
**6A2 - Raised/Depressed Pavement Marker Maintenance
Southwest Region**



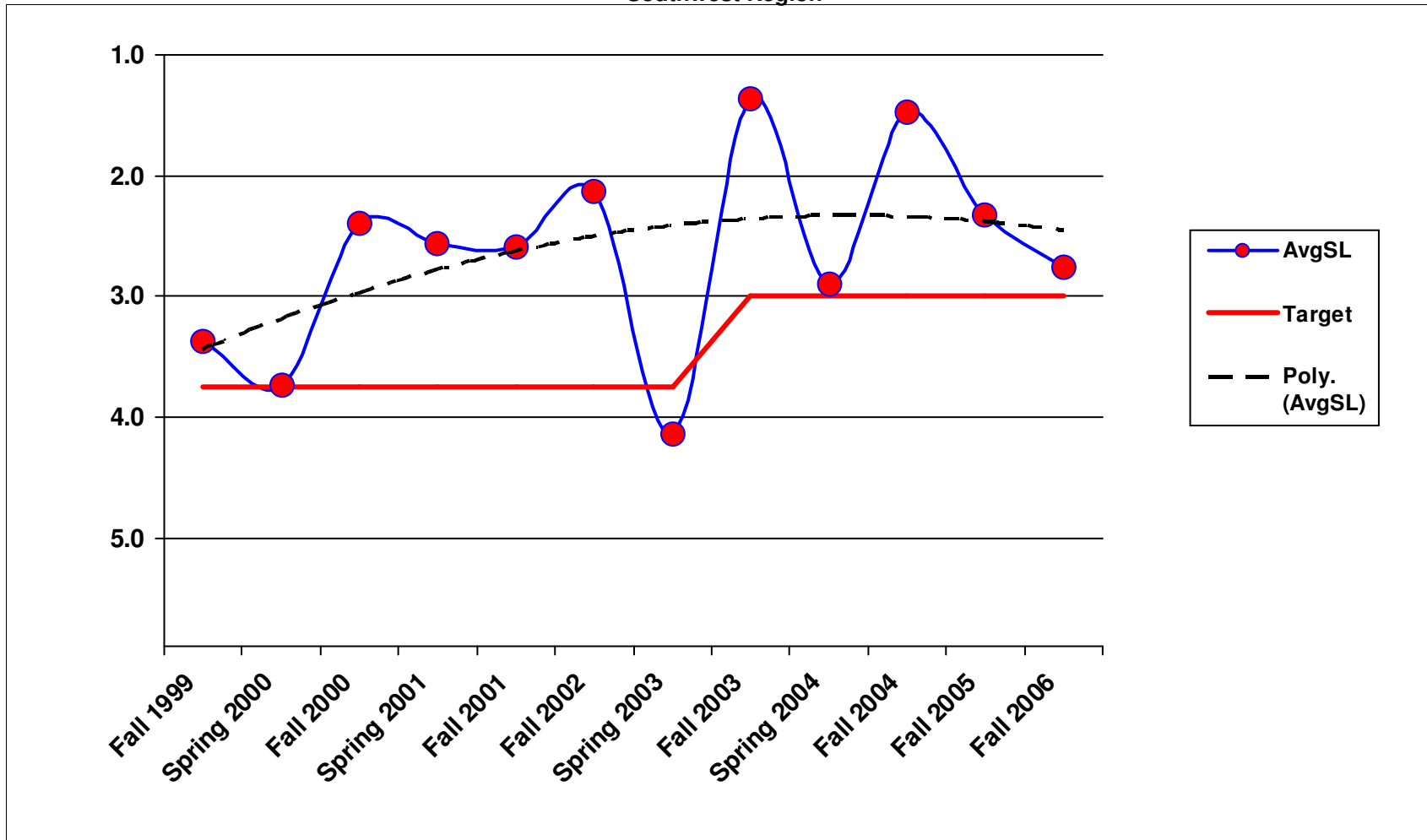
6A3 - Pavement Marking Maintenance Southwest Region



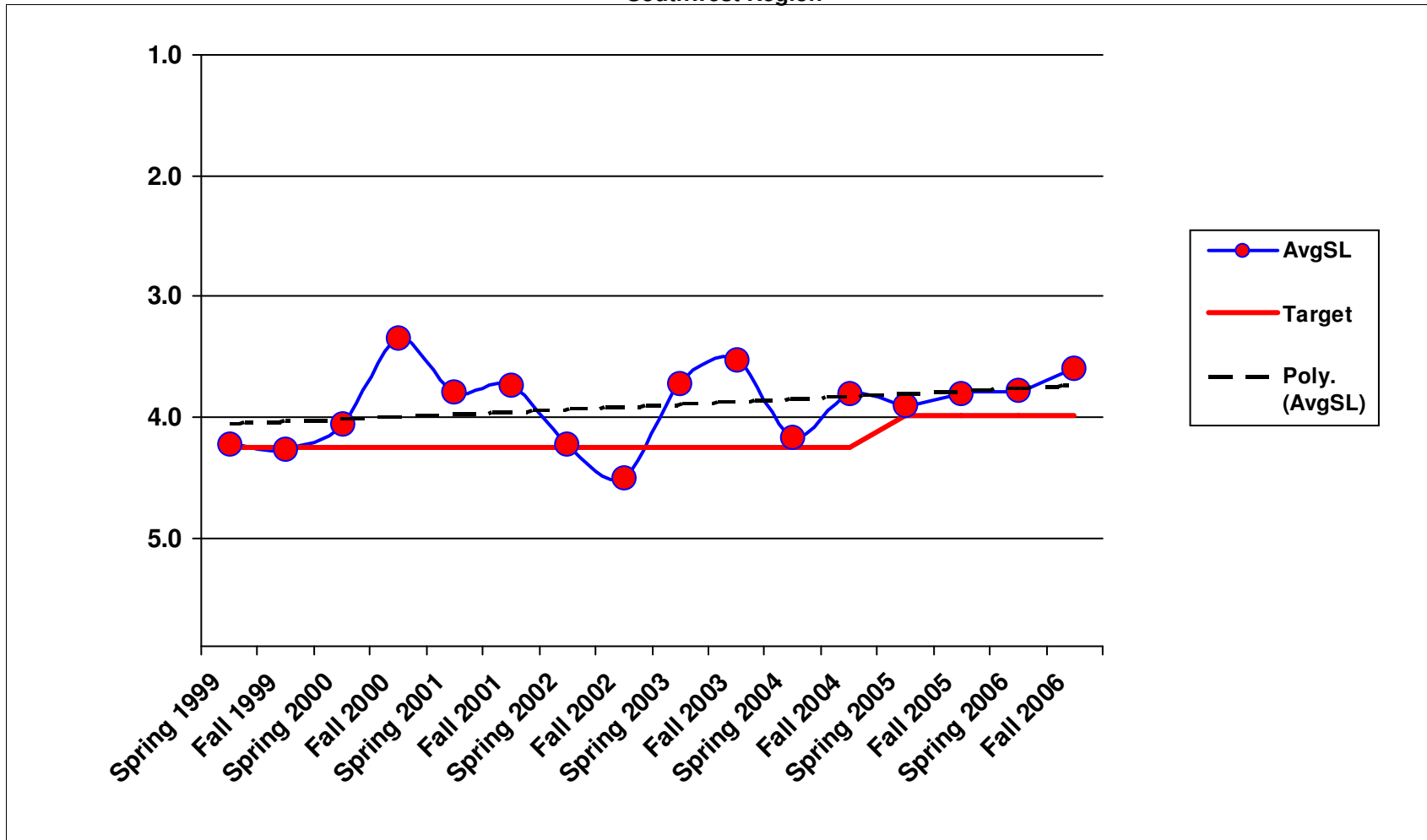
6A4 - Regulatory Sign Maintenance Southwest Region



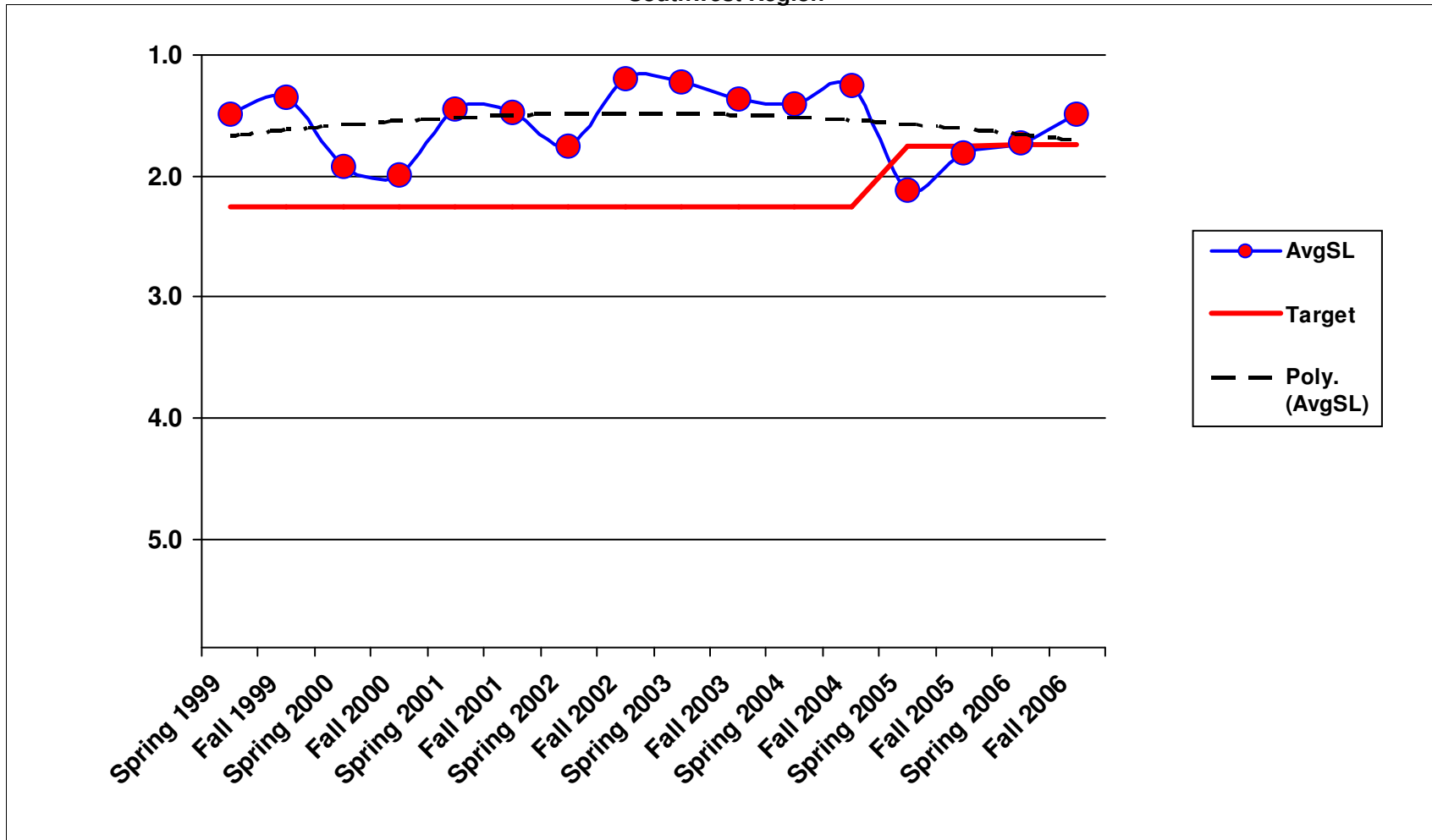
6A5 - Guide Sign Maintenance Southwest Region



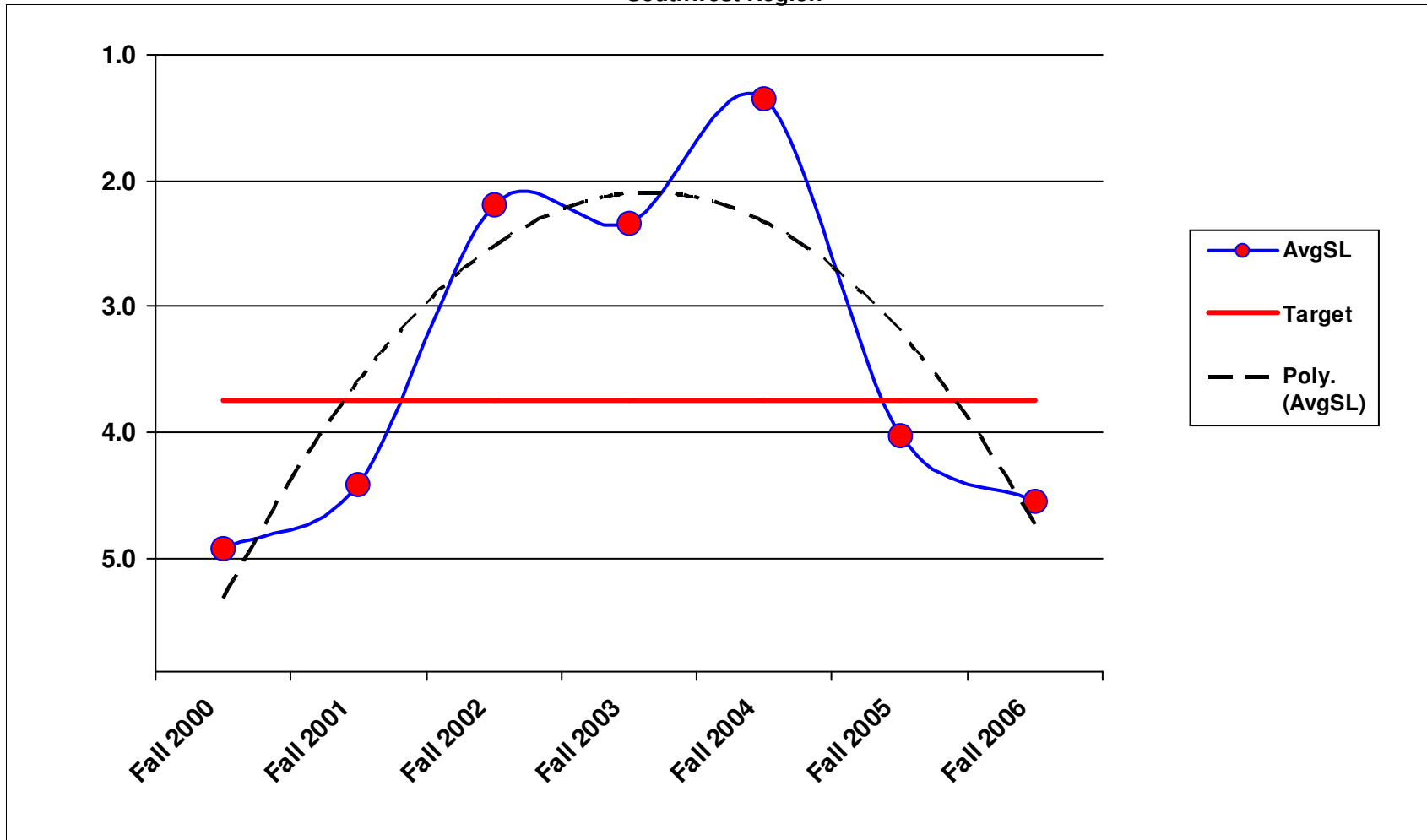
6A6 - Guidepost Maintenance Southwest Region



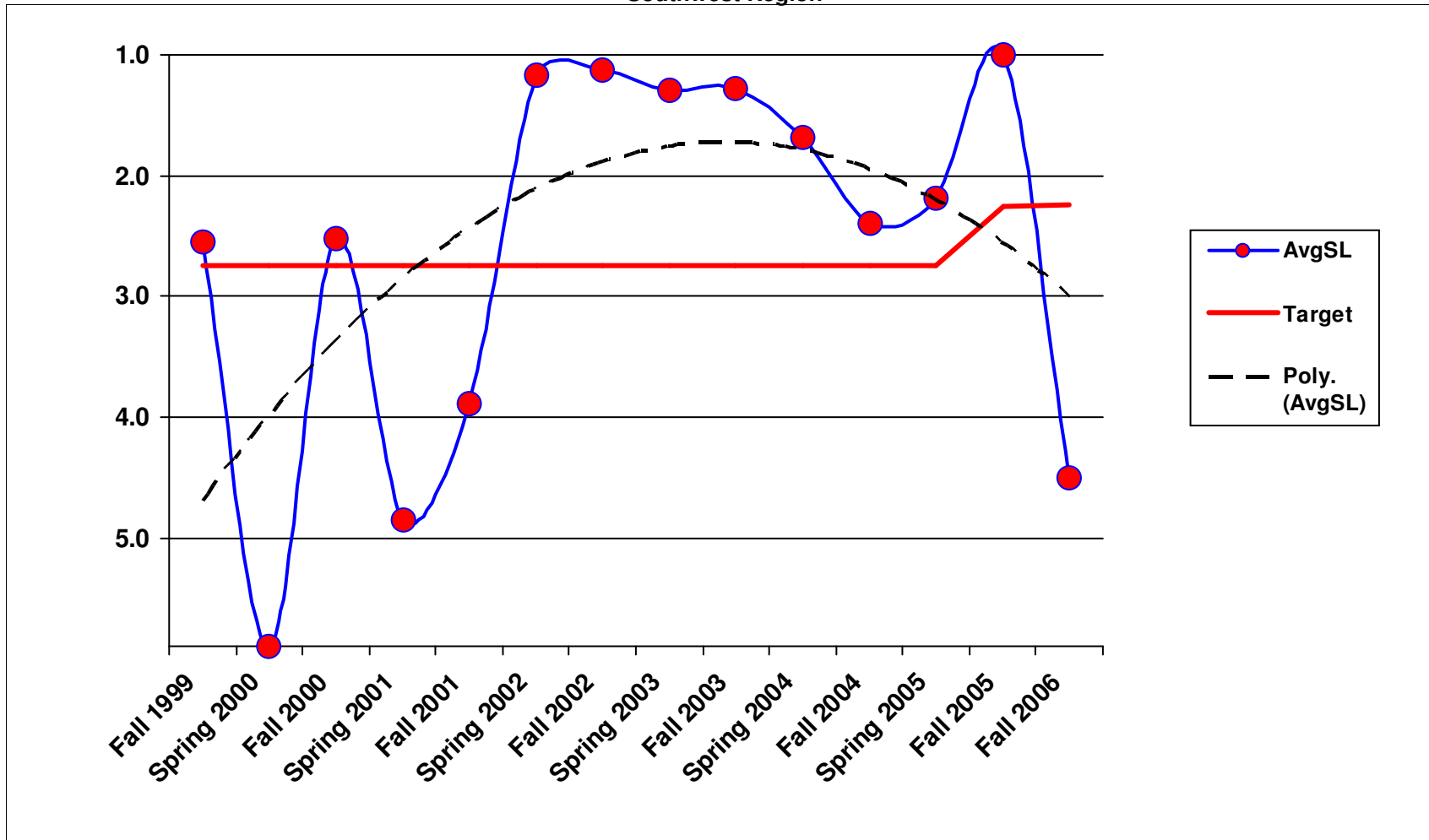
6A7 - Guardrail Maintenance Southwest Region



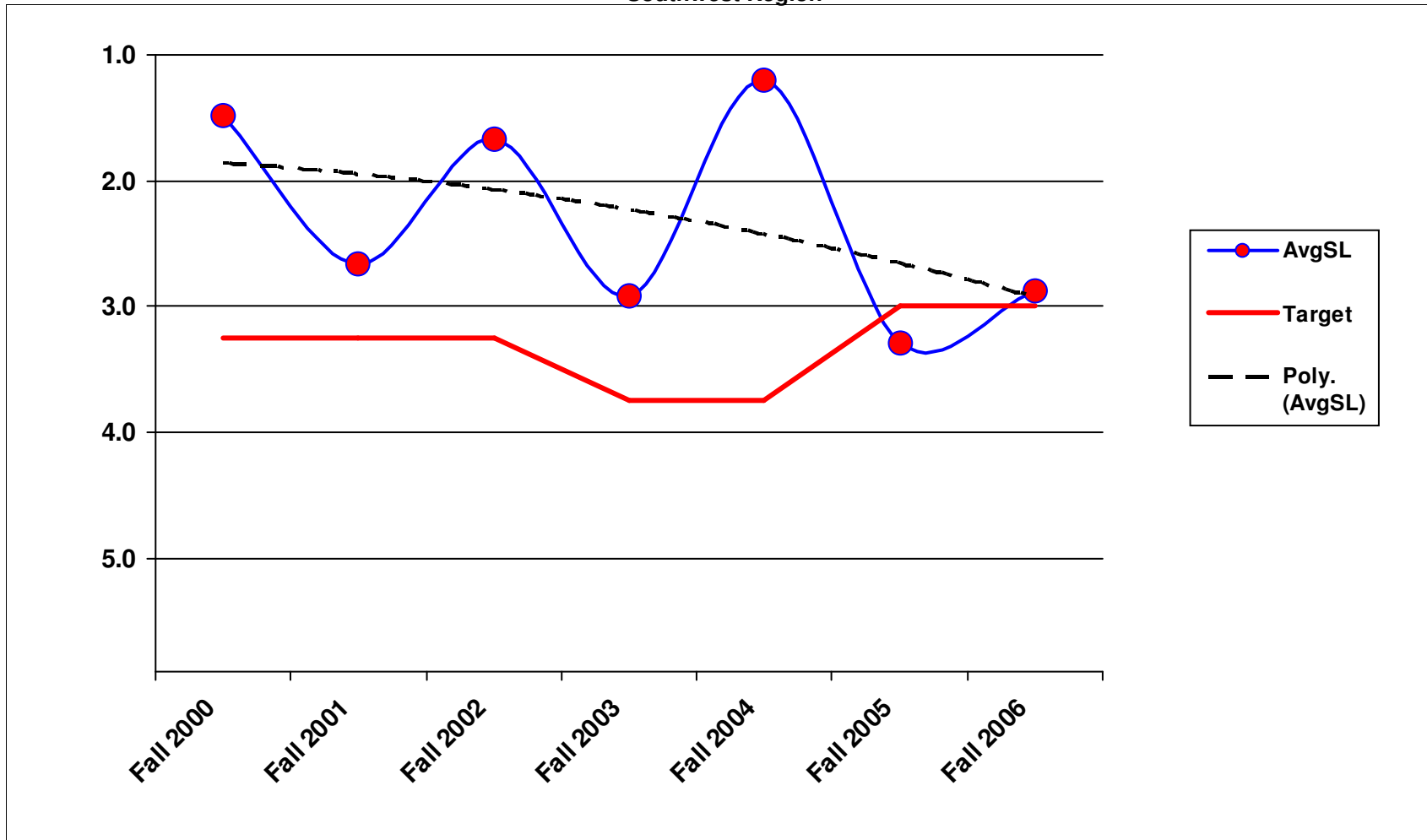
6B1 - Traffic Signal Systems Southwest Region



6B2 - Highway Lighting Systems Southwest Region



6B3 - Intelligent Transportaion Systems Southwest Region



7B1 - Rest Area Operations
Southwest Region

