



## WSDOT Aviation Monthly Report October 2009

---

[WSDOT Aviation to help educate pilots on restrictions during the Vancouver Winter Olympics](#)

[Reminder: WSDOT invites public to comment on State-Managed Airports Handbook](#)

[WSDOT Planner Reviews RV Park for Compatibility](#)

[Air search suspended for missing pilot](#)

### **WSDOT Aviation to help educate pilots on restrictions during the Vancouver Winter Olympics**

According to the Canadian Government, the 2010 Winter Olympic and Paralympics Games will take place over an eight week period during next February and March. Transport Canada has released the airspace structure as well as the operating rules and procedures that will be in place during the Games. The planned activation period for the Olympic airspace will coincide with the opening of the Athlete's villages in Vancouver January 29th to March 24th closing of the villages. For safety and security reasons, restricted airspace in form of two conjoined Olympic rings will be established within a 30 NM radius of the Vancouver International Airport and Whistler Athlete's Village. A portion of the south 30 NM Olympic ring overlies U.S. Airspace and will be controlled by Canadian authorities. All airspace restrictions, rules and procedures specific to the Olympic rings will also apply to the portion of U.S. airspace. The FAA will be issuing a NOTAM describing the TFR and operating procedures congruent with Canadian NOTAMS. United States airports affected are Blaine (closed), Meadow Mist, and Point Roberts. WSDOT and FAA will be working on a public outreach plan to advise pilots well in advance of the Olympics. Aircraft who enter the restricted area without approved flight plans and transponders codes may be considered hostile and forced to land by military aircraft.

### **Reminder: WSDOT invites public to comment on State-Managed Airports Handbook**

The public comment period for the State-Managed Airports Handbook is now underway and will extend through October 23. The handbook documents policies, performance

measures and guidelines for the maintenance and operation of the 17 state-managed airports.

The Washington State Department of Transportation (WSDOT) Aviation is hosting a series of public meetings to receive input on the State-Managed Airports Handbook. Through a facilitated discussion, the public will be able to provide comment on the handbook and proposed guidelines pertaining to the state-managed airports. The remaining two public meetings are scheduled as follows:

**3 to 5 p.m. Oct. 14, 2009**

Arlington Boys and Girls Club  
18513 59th Ave NE, Arlington, WA 98223-7846

**4 to 6 p.m. Oct. 15, 2009**

WSDOT Spokane headquarters, first floor  
2714 N Mayfair Street, Spokane, WA

During the meetings, the public will learn more about the:

- State-managed airports system
- Development of the handbook
- Draft guidelines

Please visit <http://www.wsdot.wa.gov/aviation/WSDOTManagedAirportsStudy.htm> for updated meeting schedules and announcements.

Comments may also be submitted by emailing Paul Wolf at [wolfp@wsdot.wa.gov](mailto:wolfp@wsdot.wa.gov), calling 360-651-6313, or faxing 360-651-6319. If submitting your comments via standard mail, please send to WSDOT Aviation, PO Box 3367, Arlington, WA 98223.

**Draft State-Managed Airports Handbook** (public review period: September 22 - October 23)

[Cover \(pdf 67 kb\)](#)

[Chapter 1 \(pdf 363 kb\)](#)

[Chapter 2 \(pdf 6 mb\)](#)

[Chapter 3 \(pdf 461 kb\)](#)

[Chapter 4 \(pdf 1432 kb\)](#)

[Chapter 5 \(pdf 1212 kb\)](#)

[Chapter 6 \(pdf 417 kb\)](#)

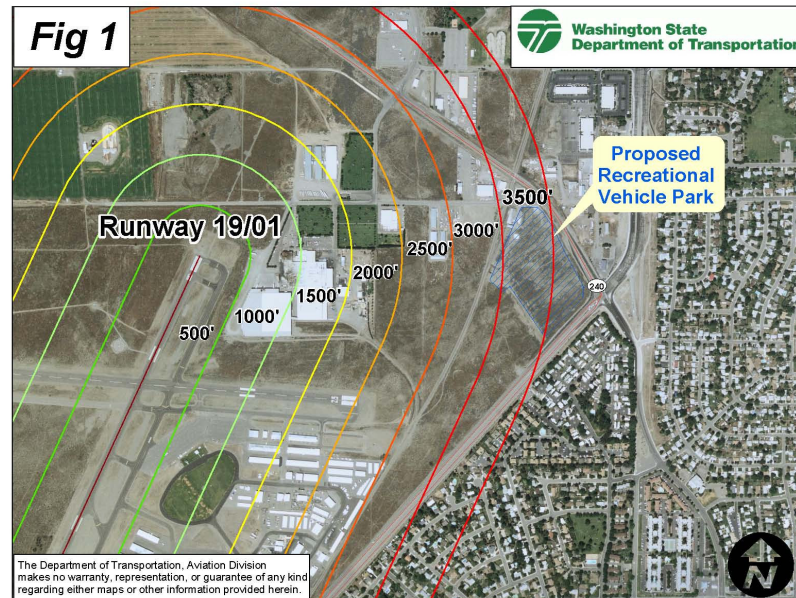
[Chapter 7 \(pdf 139 kb\)](#)

More information about the state-managed airports is located at:

[www.wsdot.wa.gov/aviation/Airports/](http://www.wsdot.wa.gov/aviation/Airports/).

## WSDOT Planner Reviews RV Park for Compatibility

WSDOT Aviation Planner, Carter Timmerman, reviewed a proposed special use of a recreational vehicle park within the C-3 zoning district of the City of Richland. In most instances, an RV Park would be considered a compatible use with an aviation facility. However, in the City of Richland, RV parks are used as long term affordable house for contract works. The



RV Park's business and operational plan proposed that tenants of the park be allowed to stay for up to five years. This would essentially create an environment more closely resembling high density single family residential development, rather than a temporal vacation destination. The plan also proposed 228 units or 'recreational vehicles' on 14.5 acres. This would equate to a residential density of .06 and acre. This residential density far exceeds the State's recommendation for land use compatibility. If approved, the majority of the proposed RV park would fall within 2,500 ft. of the Richland Airport's runway 08/26 and within 3,500 ft. of runway 19/01. This would place the proposed RV park within the traffic pattern of both runways. Residents of the RV park would be regularly exposed to aircraft noise, light, vibration and fumes during random times of the day and night. WSDOT Aviation will provide written comment to the City of Richland's Planning Commission on the potential impacts from the development.

### Air search suspended for missing pilot

WSDOT has suspended the air search for missing Lake Roesiger pilot, Gordon Last, 51, and his Taylorcraft two-seat airplane. Last has been missing since Saturday, Oct. 10.

The air search began on Sunday, October 11 and lasted through Monday, October 19. Rescue teams flew for a total of about 250 hours and about 175 personnel participated in the search. Two helicopters from King and Snohomish counties also aided in the air search.

Last's plane departed from Harvey Field Airport in Snohomish on Saturday afternoon, October 10. He was expected to return to Harvey Field later that afternoon. His girlfriend reported him as missing when he failed to return.

Due to witness and radar information, search teams focused on the area between Shelton and Westport. The area is about 1,900 square miles covering Grays Harbor County, the southeast corner of Thurston County and a small piece of northwest Lewis County.

According to reports, the plane had no emergency locator beacon or transponder on board, and no flight plan was filed.

Anyone who may have information on this aircraft is still encouraged to contact the search staff at [missingaircraft@wsdot.wa.gov](mailto:missingaircraft@wsdot.wa.gov) or 360-410-0461.