

Maintenance Accountability Process
Activity Service Level Targets and Service Levels Delivered
Eastern Region - CY 2006

Activity	1.0 +	1.9 A	2.0 -	2.9 +	3.0 -	C	4.0 3.9	4.9 +	5.0 -	5.9 +	F	-
Group - 1 Roadway Maintenance and Operations												
1A1 Pavement Patching and Repair		✓	⊙									
1A3 Shoulder Maintenance						✓⊙						
1A4 Sweeping and Cleaning		✓	⊙									
1B1 Safety Patrol				✓		⊙						
Group - 2 Drainage Maintenance and Slope Repair												
2A1 Maintain Ditches		✓	⊙									
2A2 Maintain Culverts						⊙		✓				
2A3 Maintain Catch Basins and Inlets		✓	⊙									
2A4 Maintain Detention/Retention Basins						✓⊙						
2A5 Slope Repair				✓⊙								
Group - 3 Roadside and Vegetation Management												
3A1 Litter Pickup							✓		⊙			
3A2 Noxious Weed Control	✓			⊙								
3A3 Nuisance Vegetation Control	✓				⊙							
3A4 Control of Vegetation Obstructions			✓		⊙							
3A5 Landscape Maintenance							⊙	✓				
Group - 4 Bridge and Urban Tunnel Maintenance and Operations												
4A1 Bridge Deck Repair					⊙	✓						
4A2 Structural Bridge Repair						✓⊙						
4A3 Bridge Cleaning				✓		⊙						
4B1 Movable and Floating Bridge Operations			⊙									
4B2 Keller Ferry Operations				✓⊙								
4B3 Urban Tunnel Systems				⊙								
Group - 5 Snow and Ice Control Operations												
5B1 Snow and Ice Control Operations		✓				⊙						
Group - 6 Traffic Control Maintenance and Operations												
6A2 Raised/Depressed Pavement Marker Mainten				✓⊙								
6A3 Pavement Marking Maintenance				✓			⊙					
6A4 Regulatory Sign Maintenance						⊙	✓					
6A5 Guide Sign Maintenance		✓			⊙							
6A6 Guidepost Maintenance							✓⊙					
6A7 Guardrail Maintenance		✓⊙										
6B1 Traffic Signal Systems						✓⊙						
6B2 Highway Lighting Systems		✓	⊙									
6B3 Intelligent Transportaion Systems						⊙	✓					
Group - 7 Rest Area Operations												
7B1 Rest Area Operations				✓⊙								

Key

- ⊙ Current Law Budget Service Level Commitment
- ✓ Service Level Currently Delivered By WSDOT

Maintenance Accountability Process

Activity Service Level Targets and Service Levels Delivered

Eastern Area 1 - CY 2006

Activity	1.0		1.9		2.0		2.9		3.0		3.9		4.0		4.9		5.0		5.9	
	+	A	-		+	B	-		+	C	-		+	D	-		+	F	-	
Group - 1 Roadway Maintenance and Operations																				
1A1 Pavement Patching & Repair*			✓	⊙																
1A2 Crack Sealing*										⊙		✓								
1A3 Shoulder Maintenance					✓				⊙											
1A4 Sweeping and Cleaning		✓		⊙																
1B1 Safety Patrol	✓								⊙											
Group - 2 Drainage Maintenance and Slope Repair																				
2A1 Maintain Ditches		✓			⊙															
2A2 Maintain Culverts									✓	⊙										
2A3 Maintain Catch Basins and Inlets					✓	⊙														
2A5 Slope Repair					✓	⊙														
Group - 3 Roadside and Vegetation Management																				
3A1 Litter Pickup											✓	⊙		⊙						
3A2 Noxious Weed Control		✓			⊙															
3A3 Nuisance Vegetation Control		✓				⊙														
3A4 Control of Vegetation Obstructions			✓			⊙														
Group - 4 Bridge and Urban Tunnel Maintenance and Operations																				
4A1 Bridge Deck Repair							⊙		✓											
4A3 Bridge Cleaning						✓			⊙											
Group - 5 Snow and Ice Control Operations																				
5B1 Snow and Ice Control Operations		✓							⊙											
Group - 6 Traffic Control Maintenance and Operations																				
6A2 Raised/Depressed Pavement Marker Maint.		✓			⊙															
6A3 Pavement Marking Maintenance											✓	⊙								
6A6 Guidepost Maintenance											✓	⊙								
6A7 Guardrail Maintenance	✓	⊙																		

*Data collected from WSPMS

*** Revised Performance measure with revised target

Key

- ⊙ Current Law Budget Service Level Commitment
- ✓ Service Level Currently Delivered by WSDOT

Maintenance Accountability Process

Activity Service Level Targets and Service Levels Delivered

Eastern Area 2 - CY 2006

Activity	1.0		1.9		2.0		2.9		3.0		3.9		4.0		4.9		5.0		5.9	
	+	A	-		+	B	-		+	C	-		+	D	-		+	F	-	
Group - 1 Roadway Maintenance and Operations																				
1A1 Pavement Patching & Repair*					✓	⊙														
1A2 Crack Sealing*											⊙		✓							
1A3 Shoulder Maintenance									⊙			✓								
1A4 Sweeping and Cleaning	✓				⊙															
1B1 Safety Patrol									✓	⊙										
Group - 2 Drainage Maintenance and Slope Repair																				
2A1 Maintain Ditches		✓				⊙														
2A2 Maintain Culverts									✓	⊙										
2A3 Maintain Catch Basins and Inlets	✓					⊙														
2A5 Slope Repair						⊙													✓	
Group - 3 Roadside and Vegetation Management																				
3A1 Litter Pickup						✓									⊙					
3A2 Noxious Weed Control	✓					⊙														
3A3 Nuisance Vegetation Control	✓						⊙													
3A4 Control of Vegetation Obstructions			✓				⊙													
Group - 4 Bridge and Urban Tunnel Maintenance and Operations																				
4A1 Bridge Deck Repair								✓	⊙											
4A3 Bridge Cleaning					✓					⊙										
Group - 5 Snow and Ice Control Operations																				
5B1 Snow and Ice Control Operations		✓							⊙											
Group - 6 Traffic Control Maintenance and Operations																				
6A2 Raised/Depressed Pavement Marker Maint.						⊙				✓										
6A3 Pavement Marking Maintenance	✓										⊙									
6A6 Guidepost Maintenance											⊙		✓							
6A7 Guardrail Maintenance		⊙			✓															

*Data collected from WSPMS

*** Revised Performance measure with revised target

Key

- ⊙ Current Law Budget Service Level Commitment
- ✓ Service Level Currently Delivered by WSDOT

Maintenance Accountability Process
Activity Service Level Targets and Service Levels Delivered
Eastern Region Area 3 - CY 2006

Activity	1.0 +	1.9 A	2.0 -	2.9 +	3.0 -	C	4.0 +	D	4.9	5.0	5.9 -	F
Group - 1 Roadway Maintenance and Operations												
1A1 Pavement Patching and Repair			⊙	✓								
1A3 Shoulder Maintenance					⊙	✓						
1A4 Sweeping and Cleaning	✓		⊙									
1B1 Safety Patrol				✓	⊙							
Group - 2 Drainage Maintenance and Slope Repair												
2A1 Maintain Ditches		✓	⊙									
2A2 Maintain Culverts						⊙	✓					
2A3 Maintain Catch Basins and Inlets				✓	⊙							
2A5 Slope Repair		✓	⊙									
Group - 3 Roadside and Vegetation Management												
3A1 Litter Pickup						✓		⊙				
3A2 Noxious Weed Control	✓			⊙								
3A3 Nuisance Vegetation Control	✓				⊙							
3A4 Control of Vegetation Obstructions		✓			⊙							
Group - 4 Bridge and Urban Tunnel Maintenance and Operations												
4A1 Bridge Deck Repair					⊙	✓						
4A3 Bridge Cleaning			✓			⊙						
Group - 5 Snow and Ice Control Operations												
5B1 Snow and Ice Control Operations		✓				⊙						
Group - 6 Traffic Control Maintenance and Operations												
6A2 Raised/Depressed Pavement Marker Mainten		✓		⊙								
6A3 Pavement Marking Maintenance							⊙					
6A6 Guidepost Maintenance							⊙	✓				
6A7 Guardrail Maintenance		✓	⊙									

Key

- ⊙ Current Law Budget Service Level Commitment
- ✓ Service Level Currently Delivered By WSDOT

Maintenance Accountability Process

Activity Service Level Targets and Service Levels Delivered

Eastern Area 4 - CY 2006

Activity	1.0		1.9		2.0		2.9		3.0		3.9		4.0		4.9		5.0		5.9	
	+	A	-		+	B	-		+	C	-		+	D	-		+	F	-	
Group - 1 Roadway Maintenance and Operations																				
1A1 Pavement Patching & Repair*		✓		⊙																
1A2 Crack Sealing*				✓						⊙										
1A3 Shoulder Maintenance					✓				⊙											
1A4 Sweeping and Cleaning				⊙		✓														
1B1 Safety Patrol						✓			⊙											
Group - 2 Drainage Maintenance and Slope Repair																				
2A1 Maintain Ditches					⊙			✓												
2A2 Maintain Culverts									⊙											✓
2A3 Maintain Catch Basins and Inlets	✓				⊙															
2A5 Slope Repair				✓	⊙															
Group - 3 Roadside and Vegetation Management																				
3A1 Litter Pickup									✓					⊙						
3A2 Noxious Weed Control	✓				⊙															
3A3 Nuisance Vegetation Control	✓						⊙													
3A4 Control of Vegetation Obstructions			✓				⊙													
Group - 4 Bridge and Urban Tunnel Maintenance and Operations																				
4A1 Bridge Deck Repair				✓		⊙														
4A3 Bridge Cleaning						✓			⊙											
Group - 5 Snow and Ice Control Operations																				
5B1 Snow and Ice Control Operations					✓			⊙												
Group - 6 Traffic Control Maintenance and Operations																				
6A2 Raised/Depressed Pavement Marker Maint.					✓	⊙														
6A3 Pavement Marking Maintenance									✓		⊙									
6A6 Guidepost Maintenance									✓		⊙									
6A7 Guardrail Maintenance		✓	⊙																	

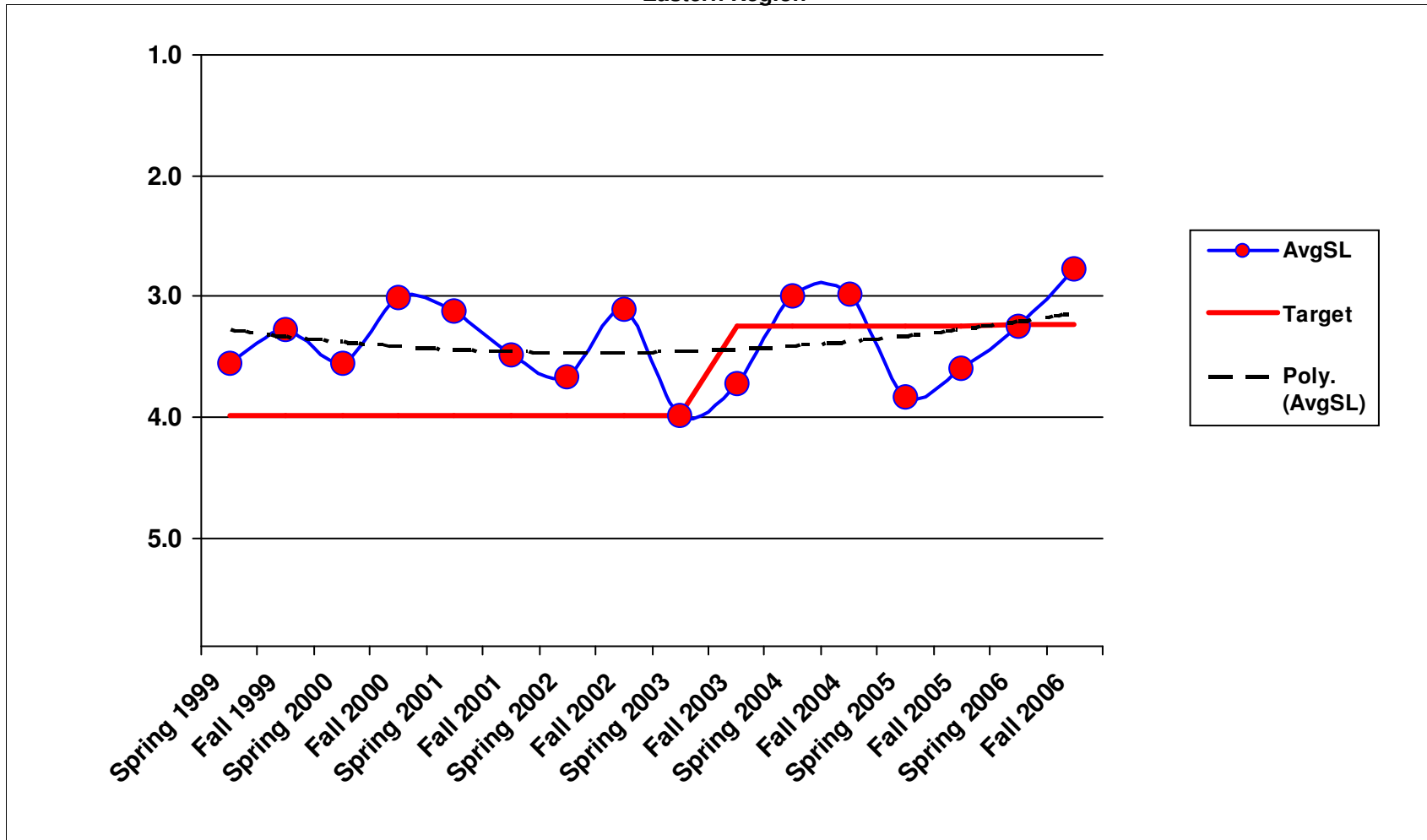
*Data collected from WSPMS

*** Revised Performance measure with revised target

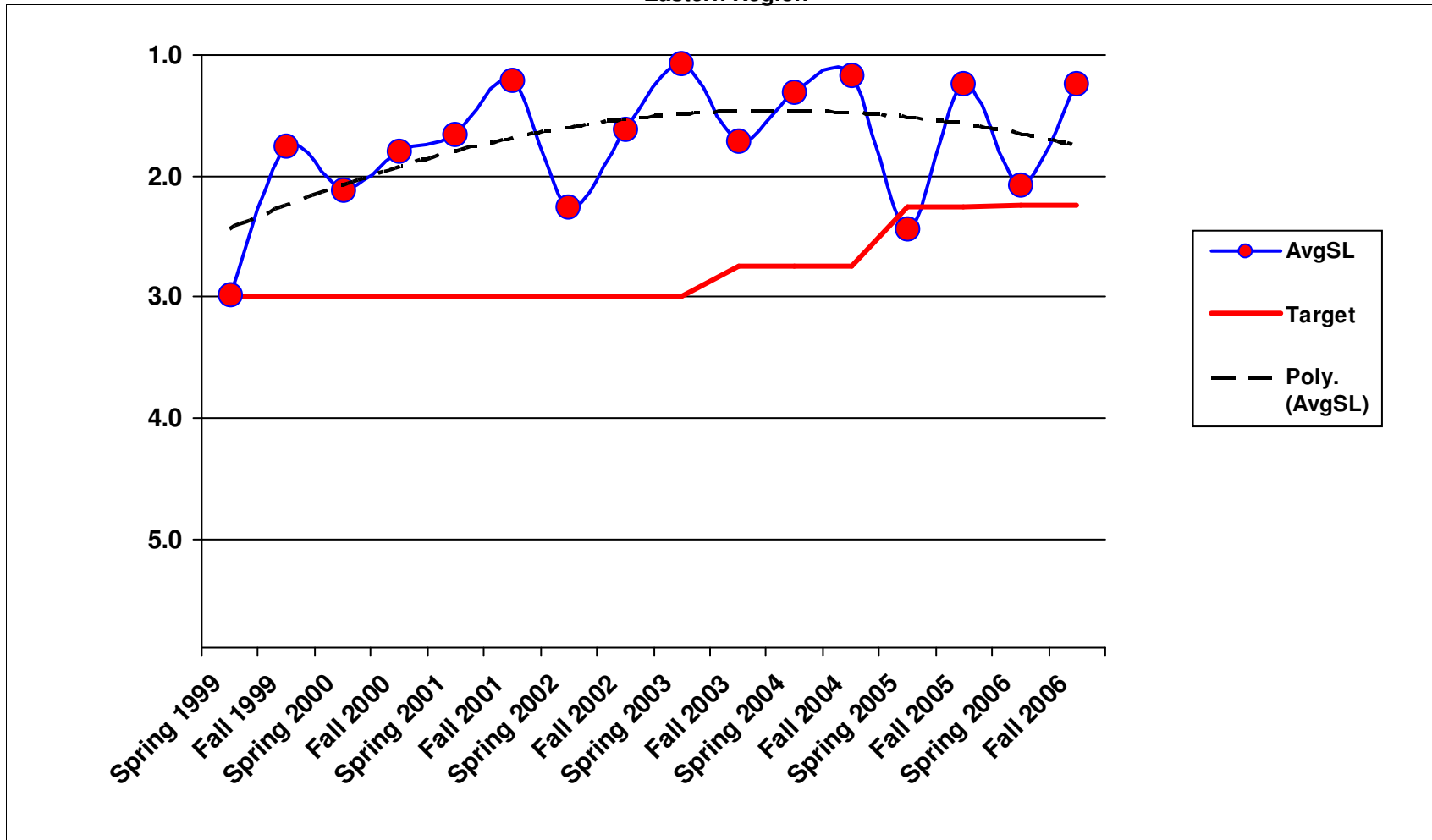
Key

- ⊙ Current Law Budget Service Level Commitment
- ✓ Service Level Currently Delivered by WSDOT

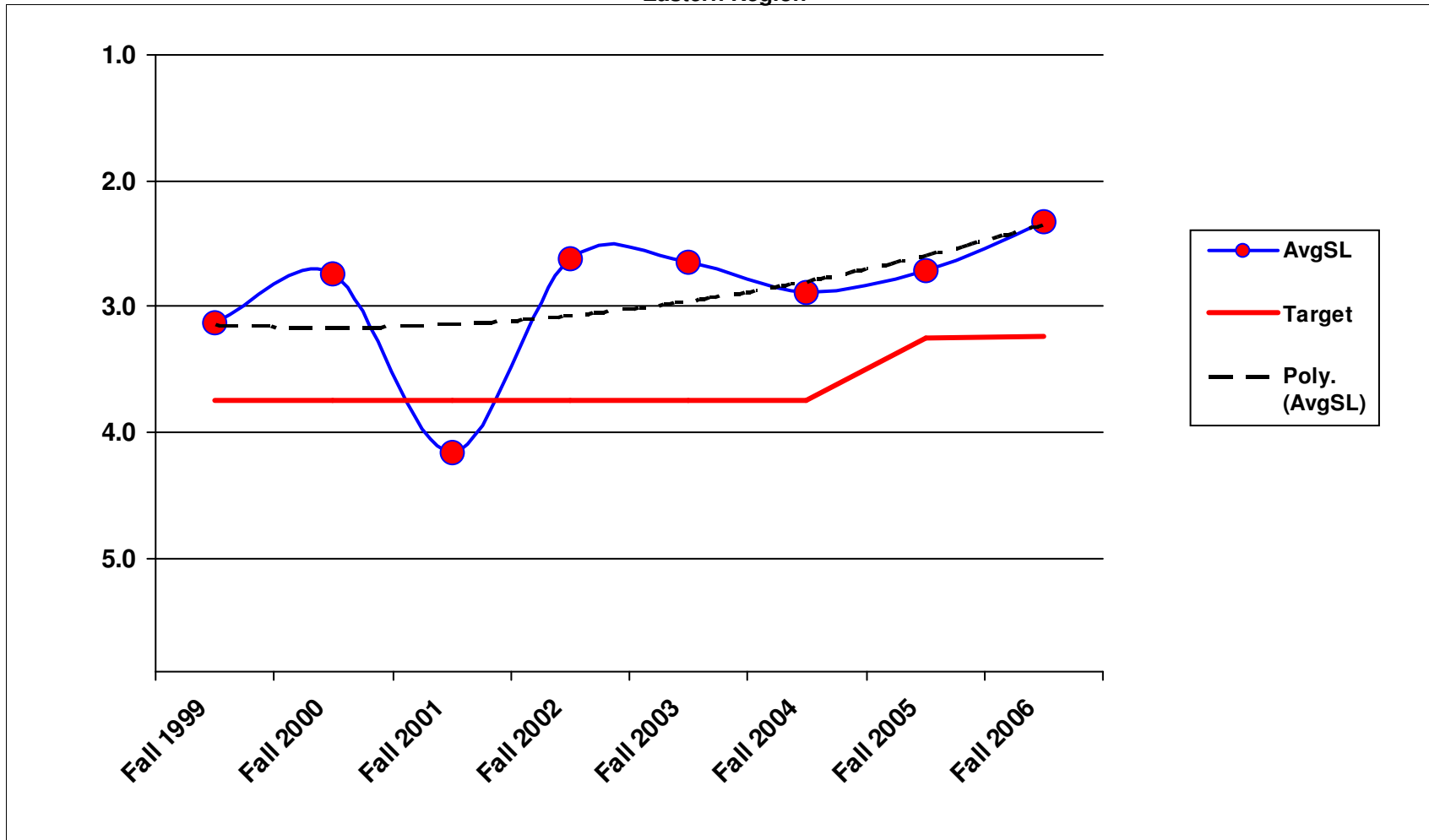
1A3 - Shoulder Maintenance Eastern Region



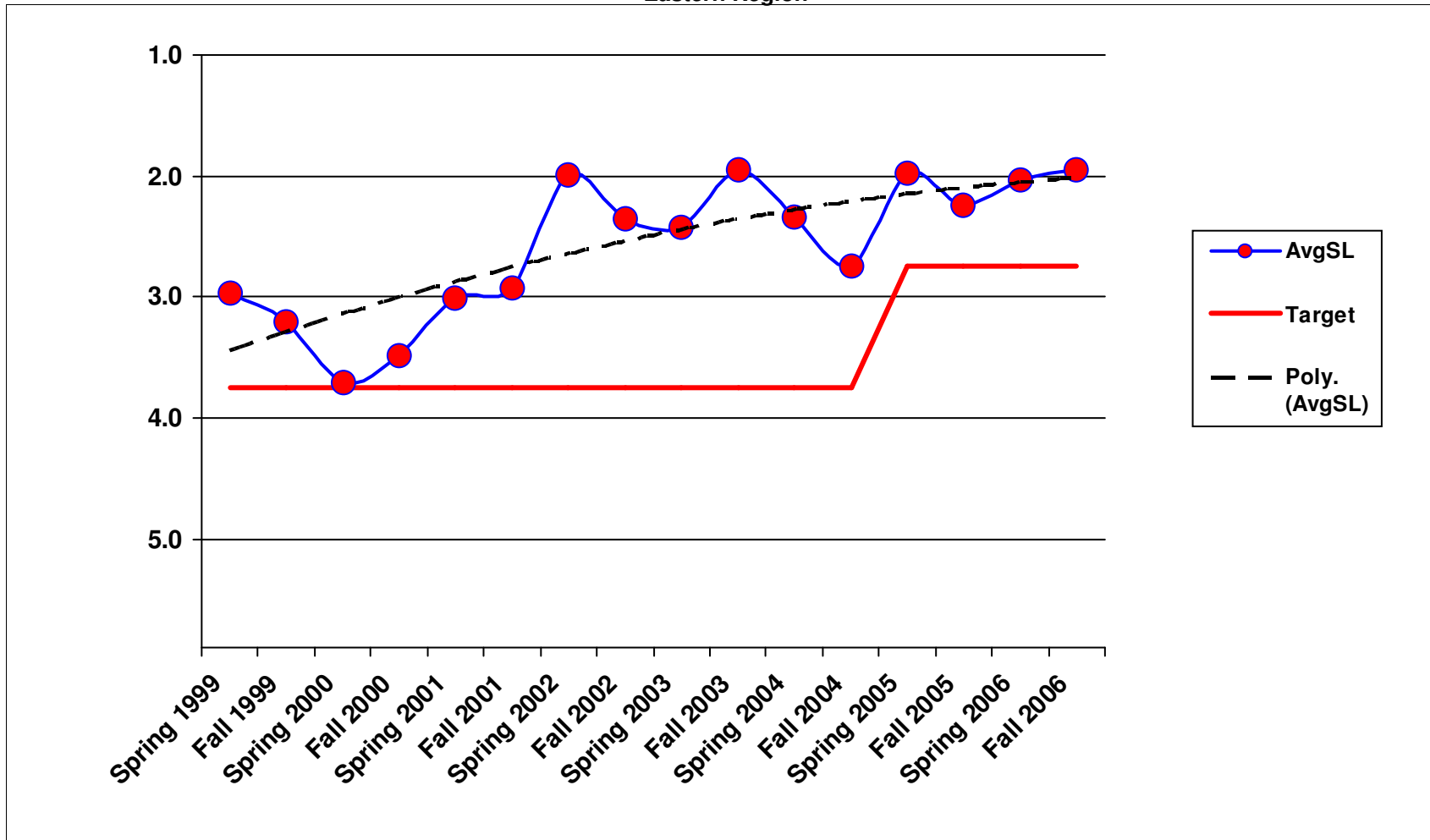
1A4 - Sweeping and Cleaning Eastern Region



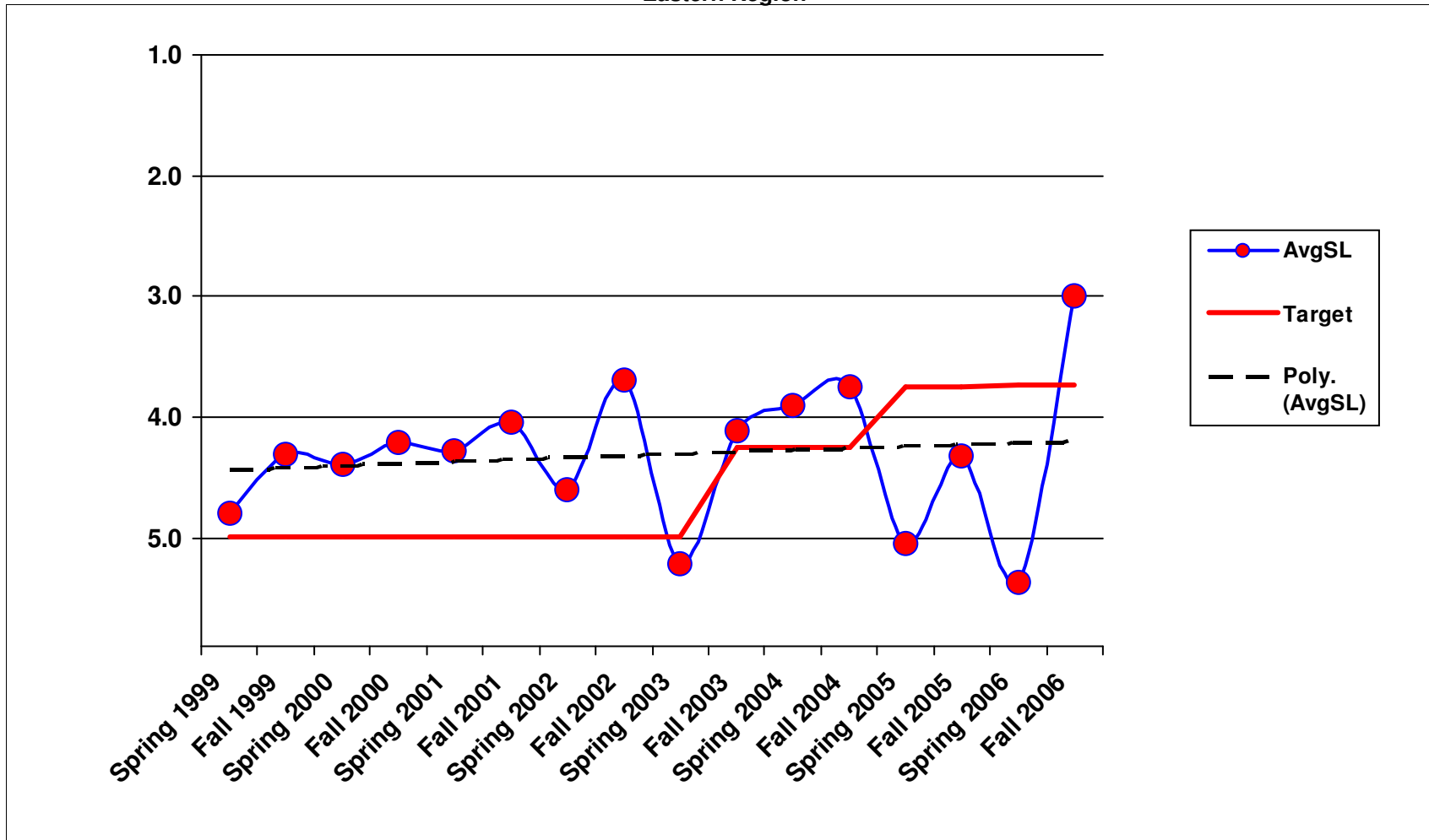
1B1 - Safety Patrol
Eastern Region



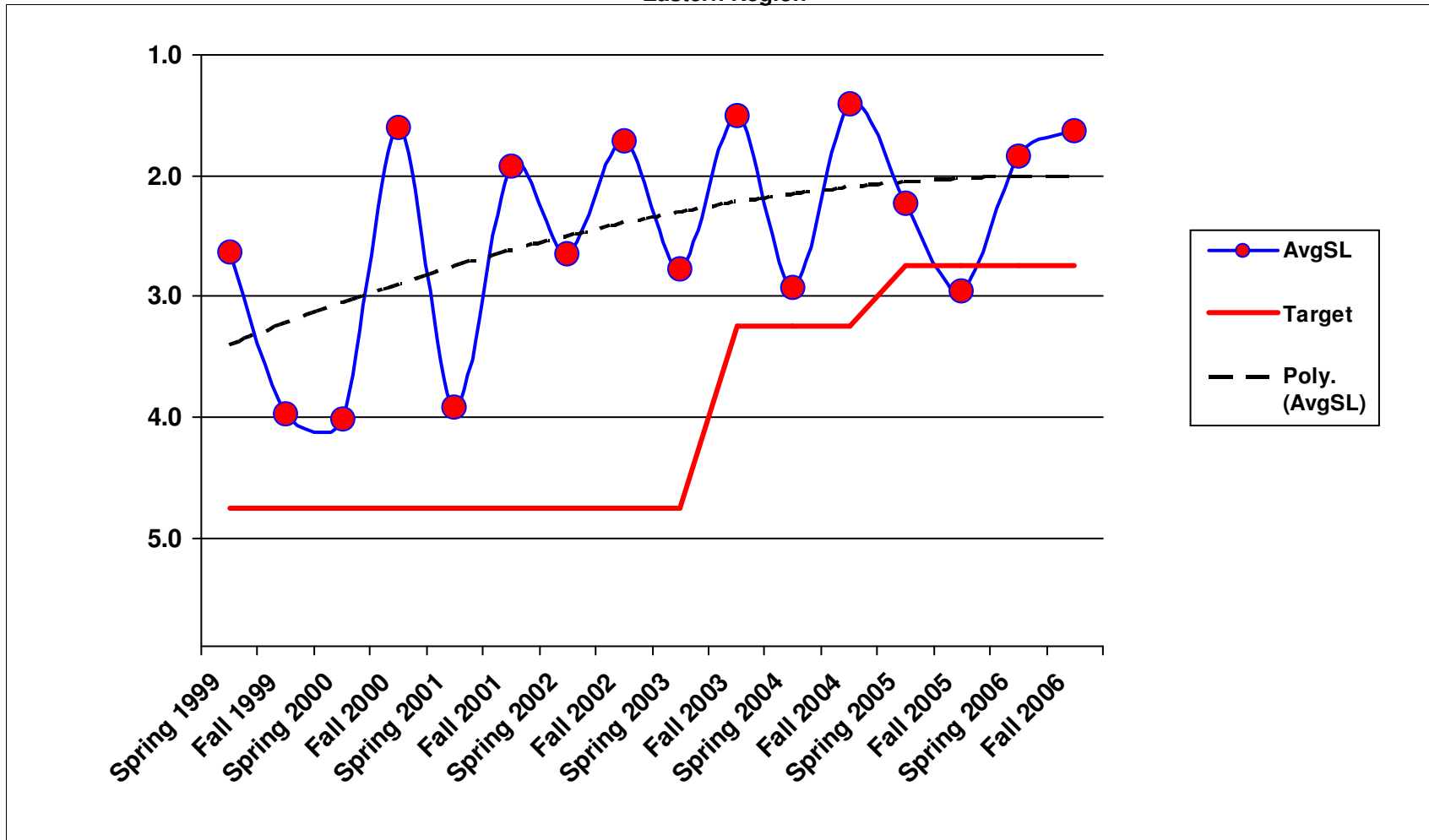
2A1 - Maintain Ditches Eastern Region



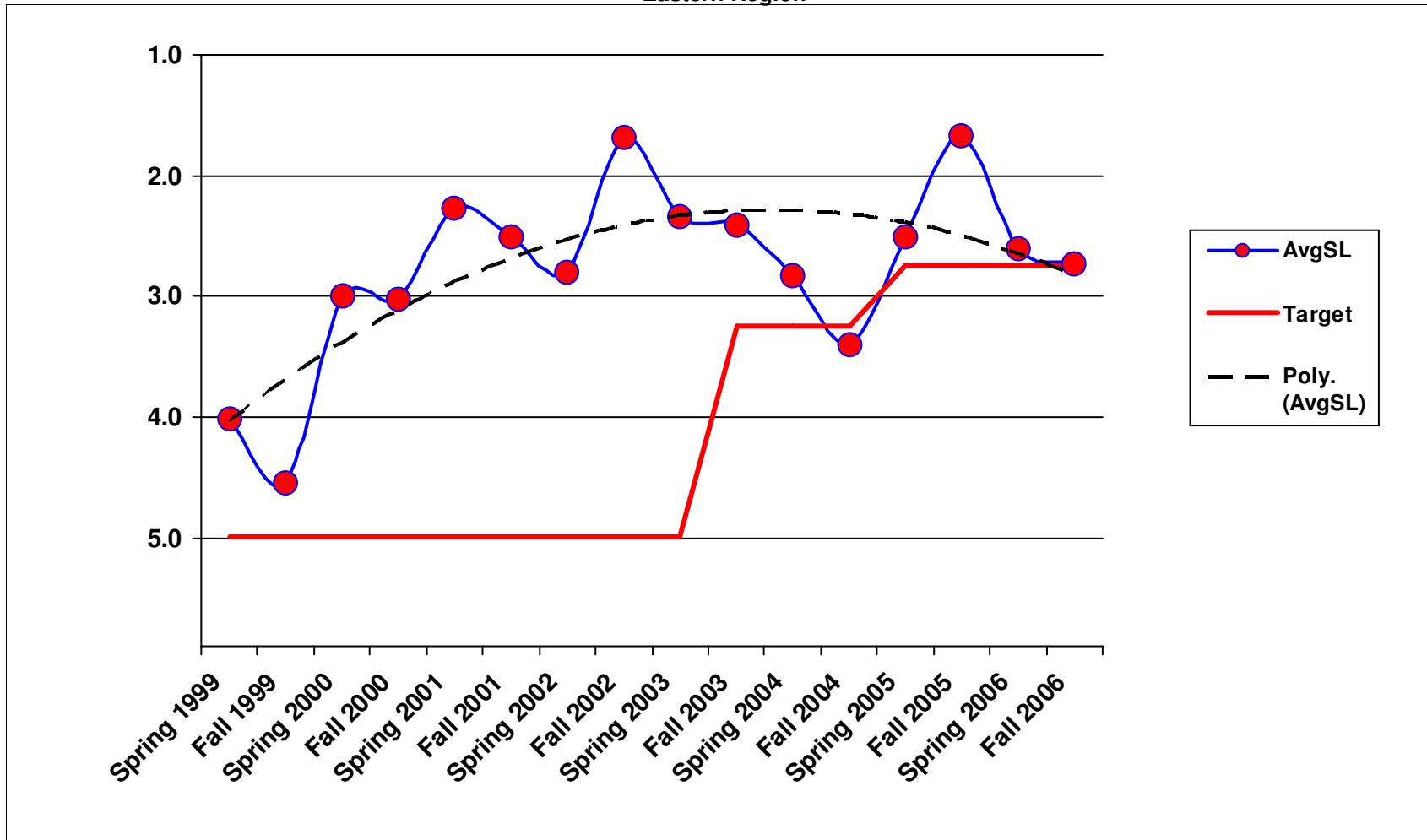
2A2 - Maintain Culverts
Eastern Region



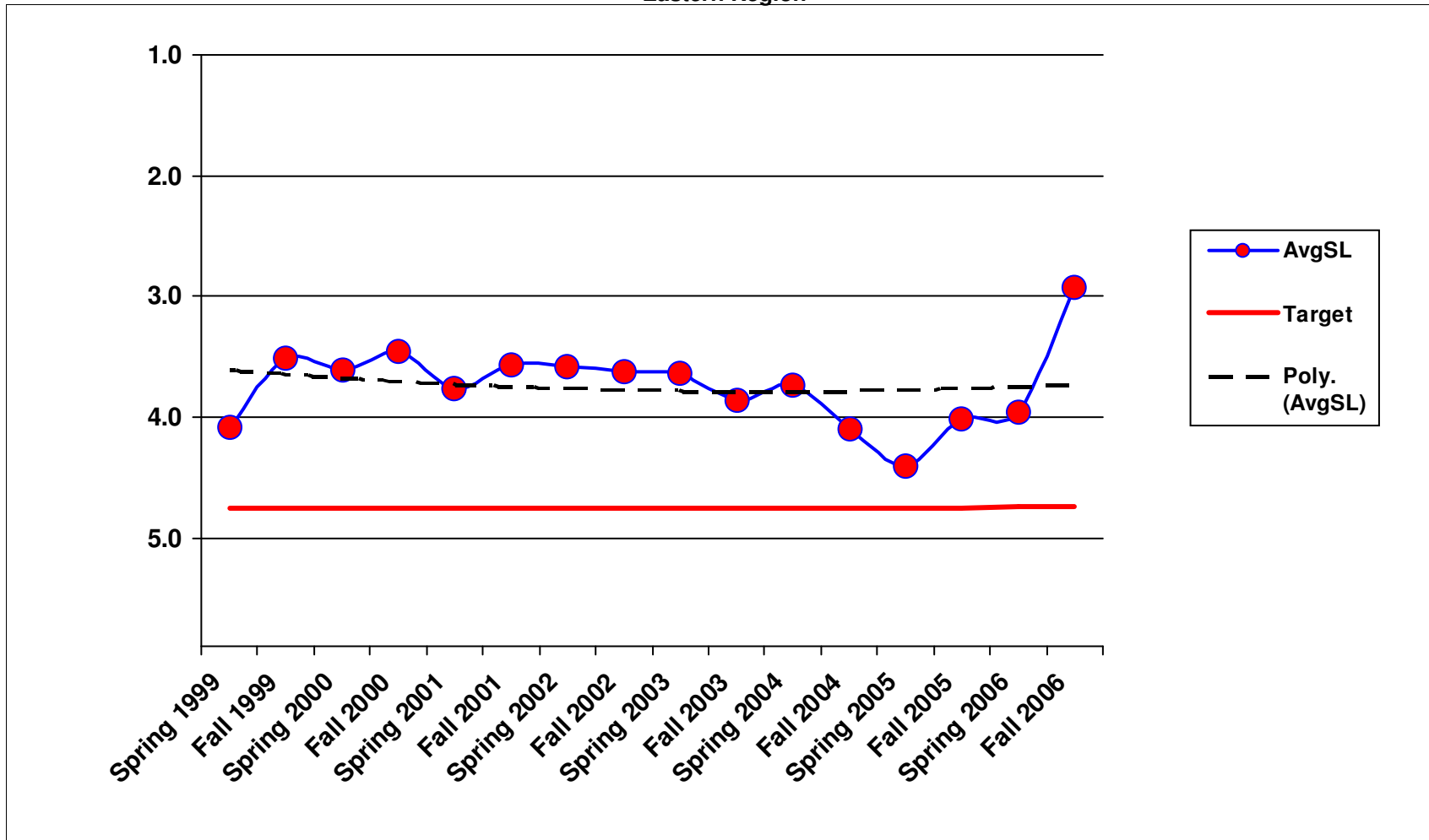
2A3 - Maintain Catch Basins and Inlets
Eastern Region



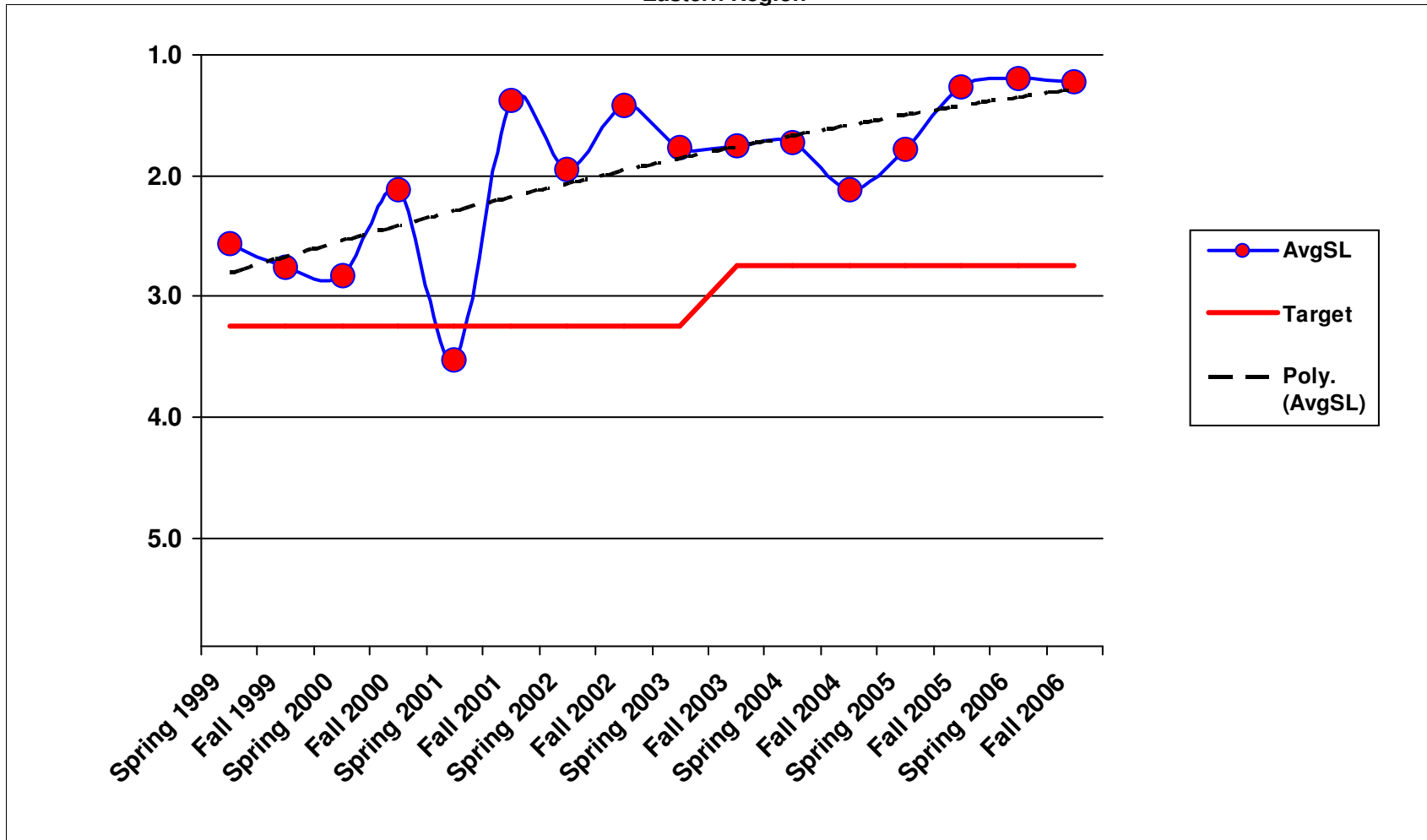
2A5 - Slope Repair Eastern Region



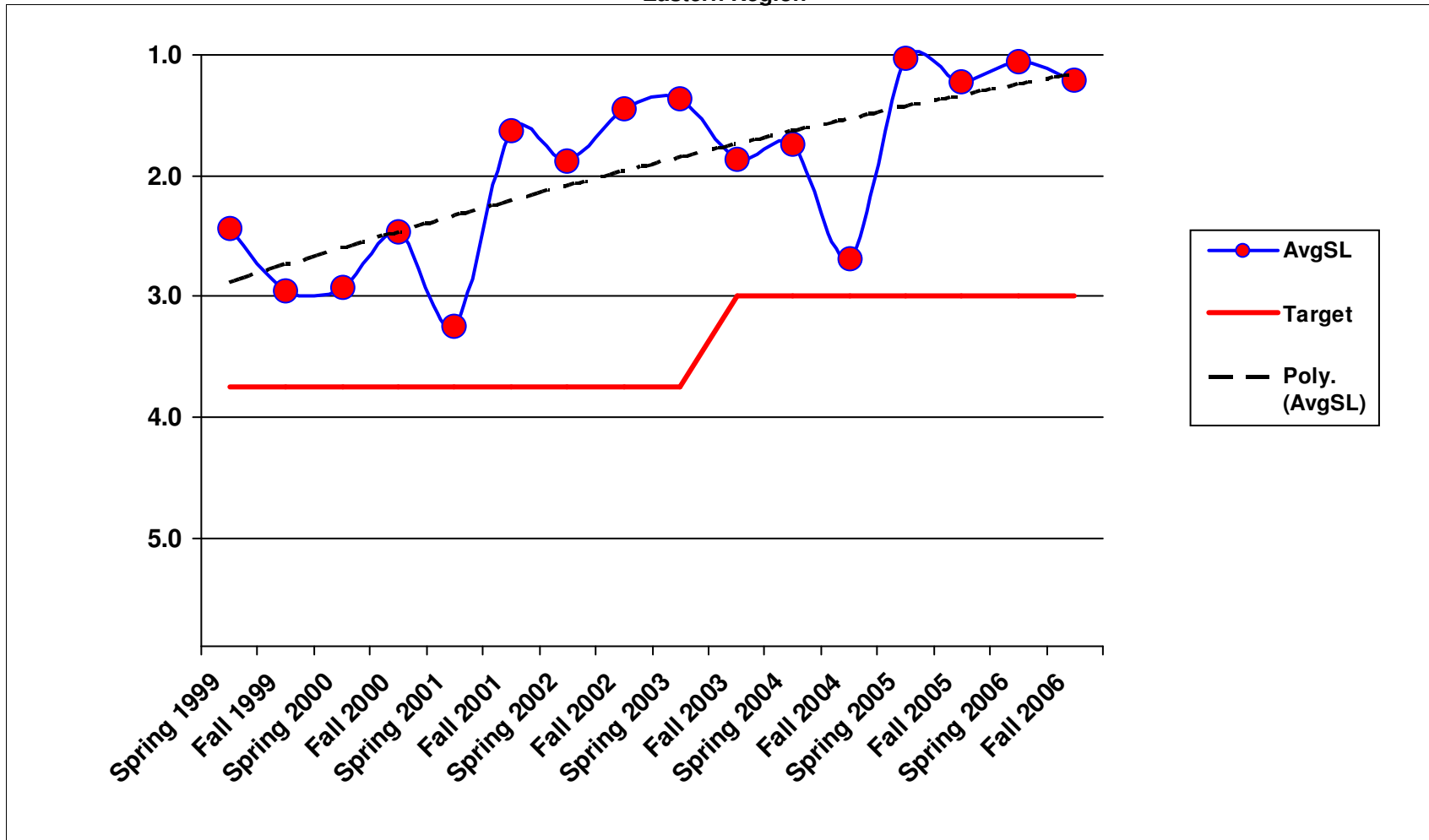
3A1 - Litter Pickup Eastern Region



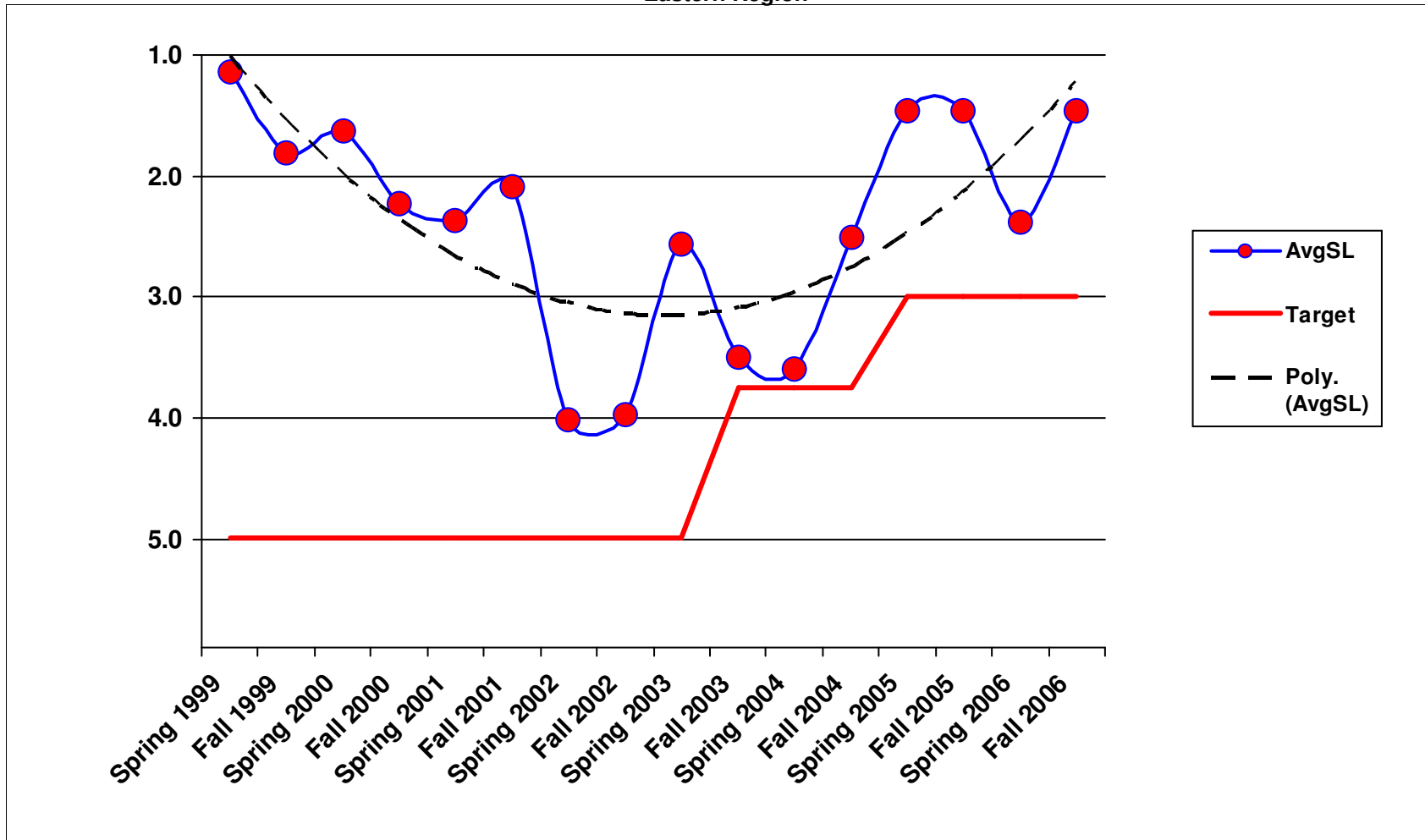
3A2 - Noxious Weed Control Eastern Region



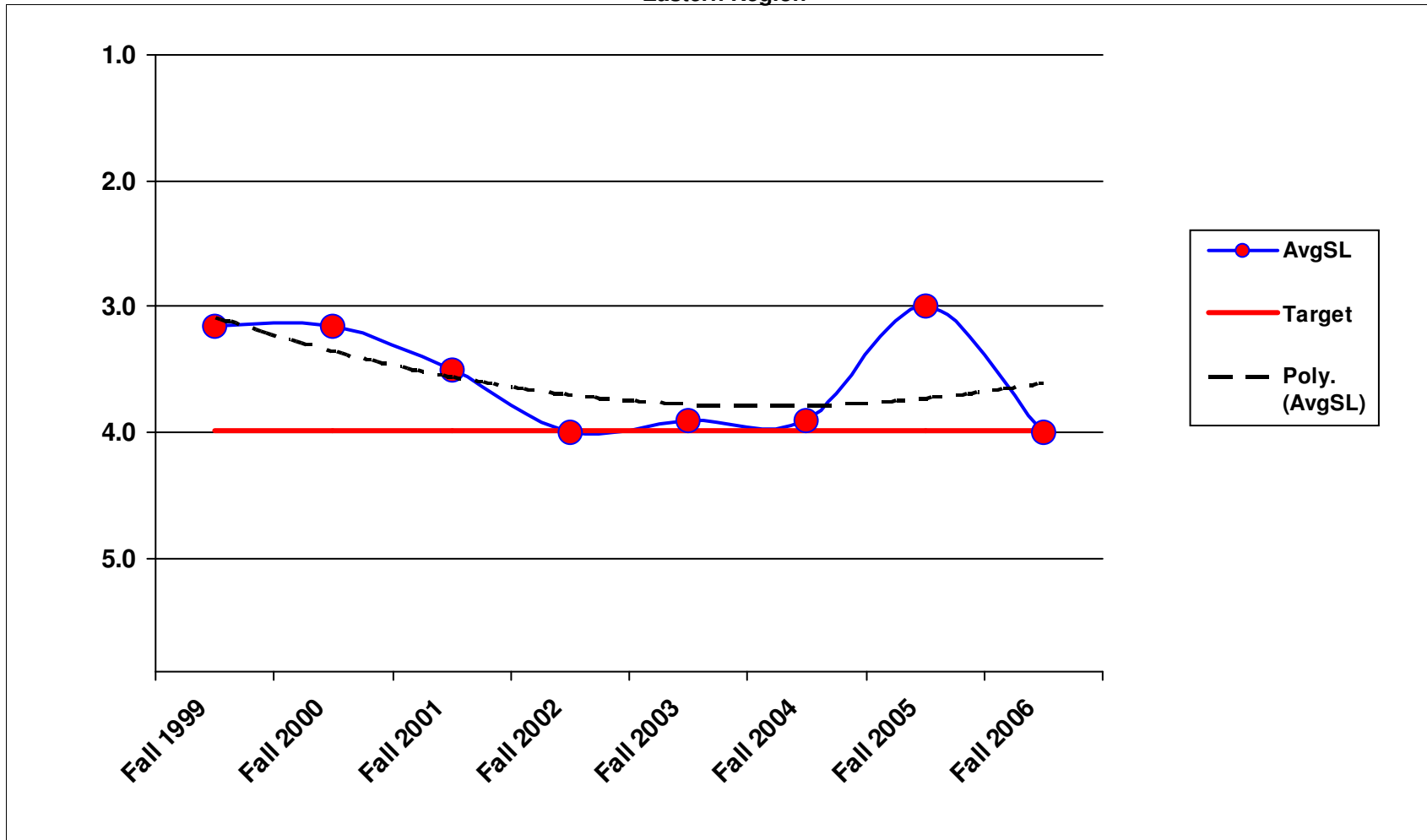
3A3 - Nuisance Vegetation Control Eastern Region



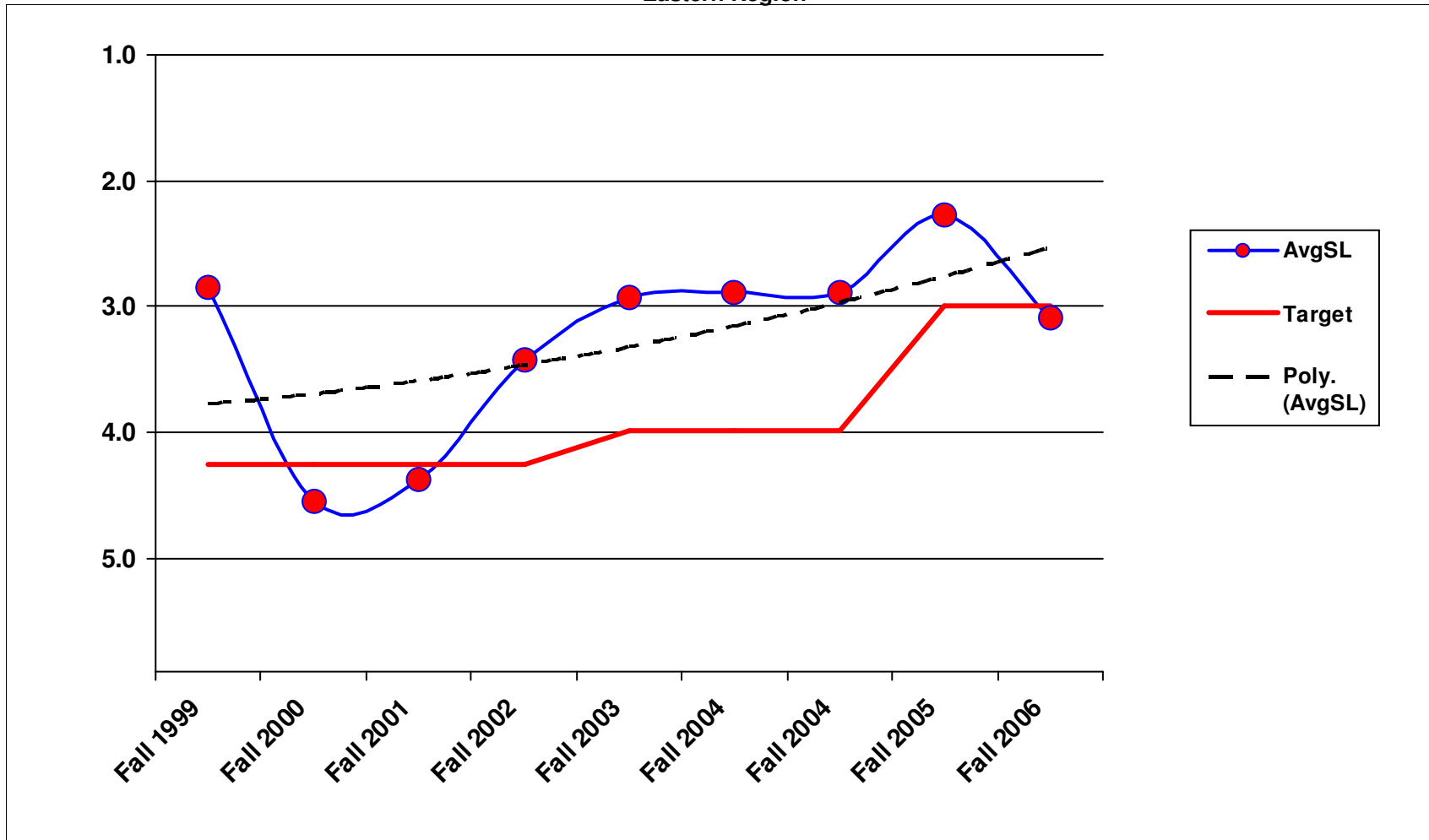
3A4 - Control of Vegetation Obstructions Eastern Region



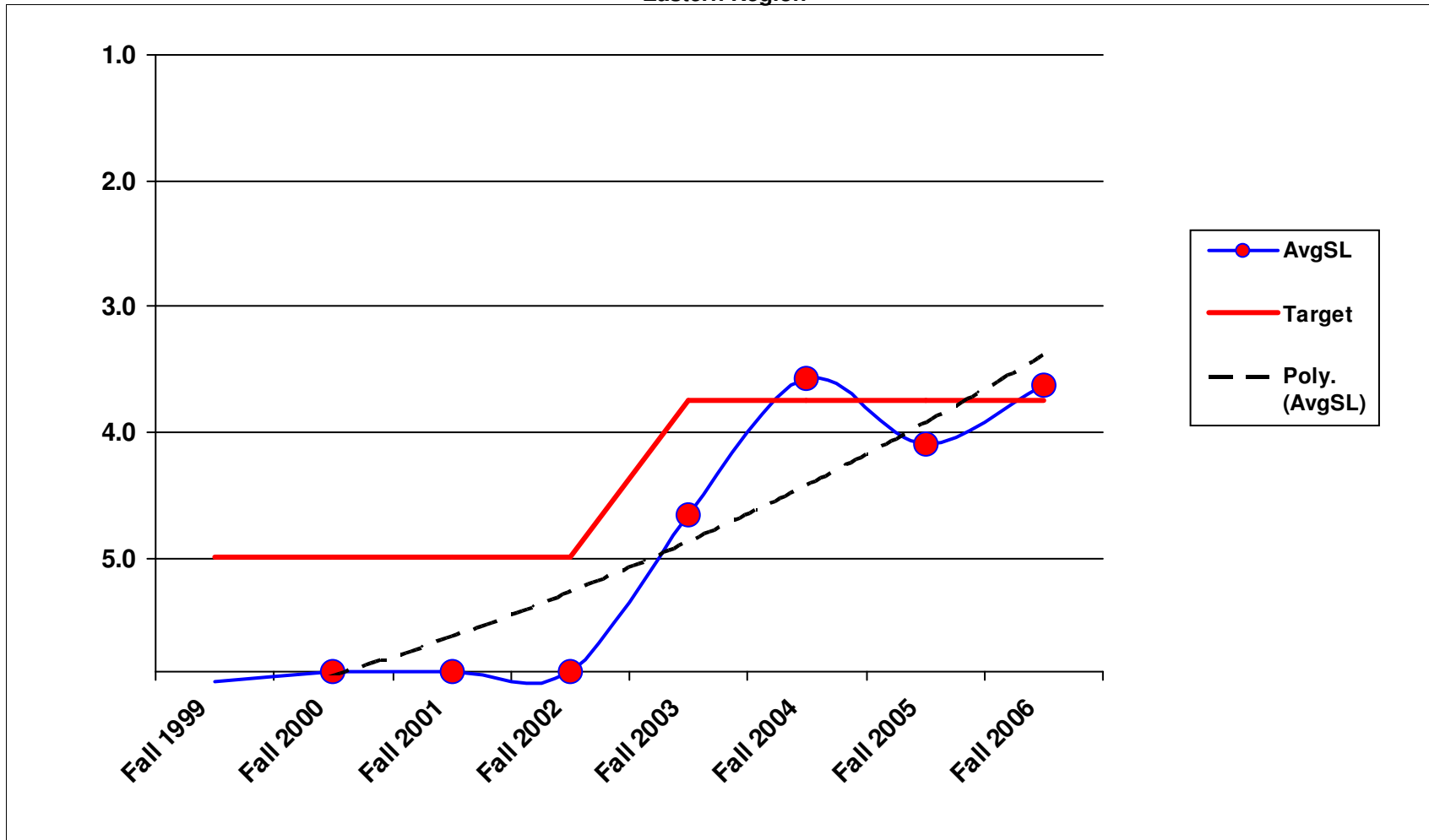
3A5 - Landscape Maintenance Eastern Region



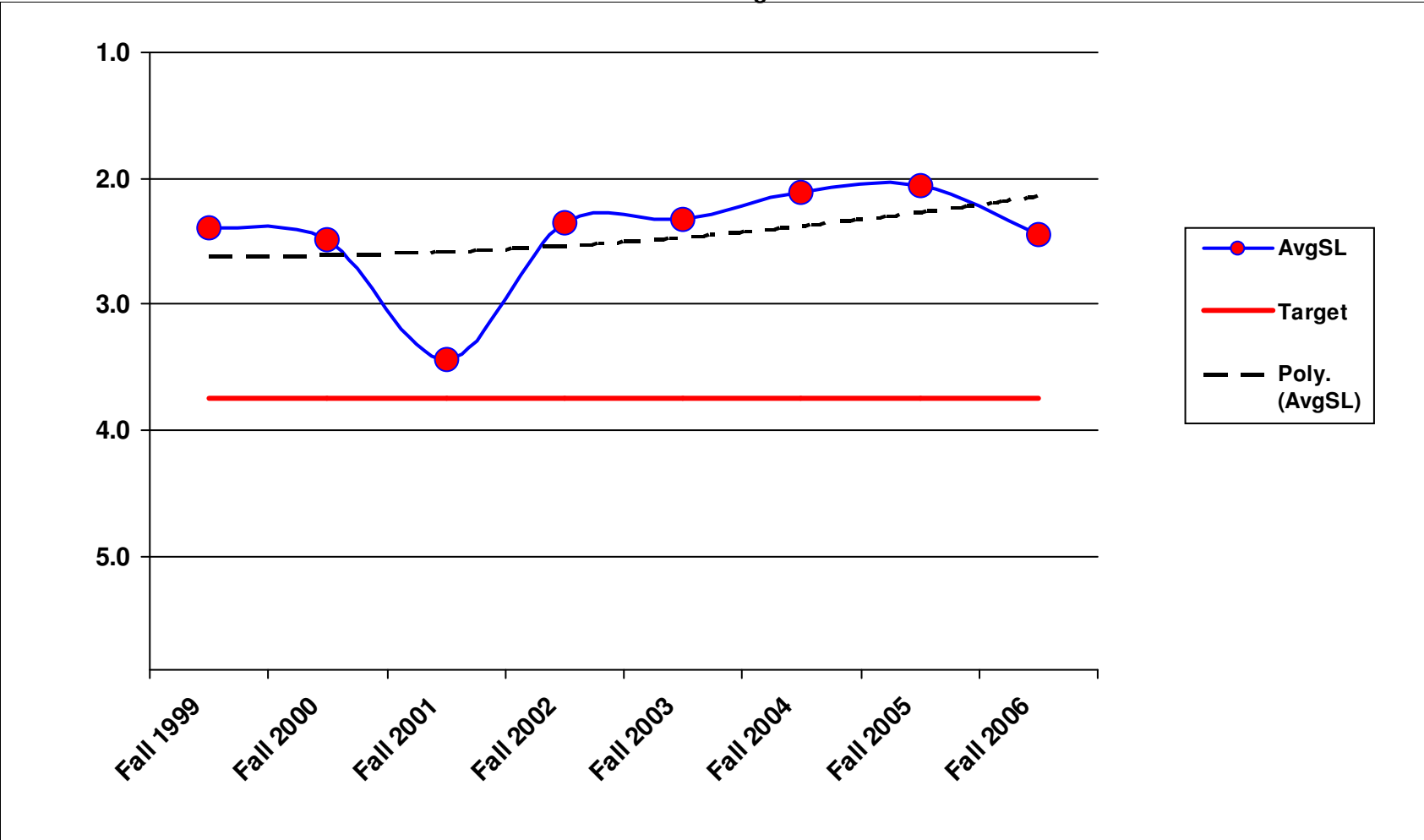
4A1 - Bridge Deck Repair
Eastern Region



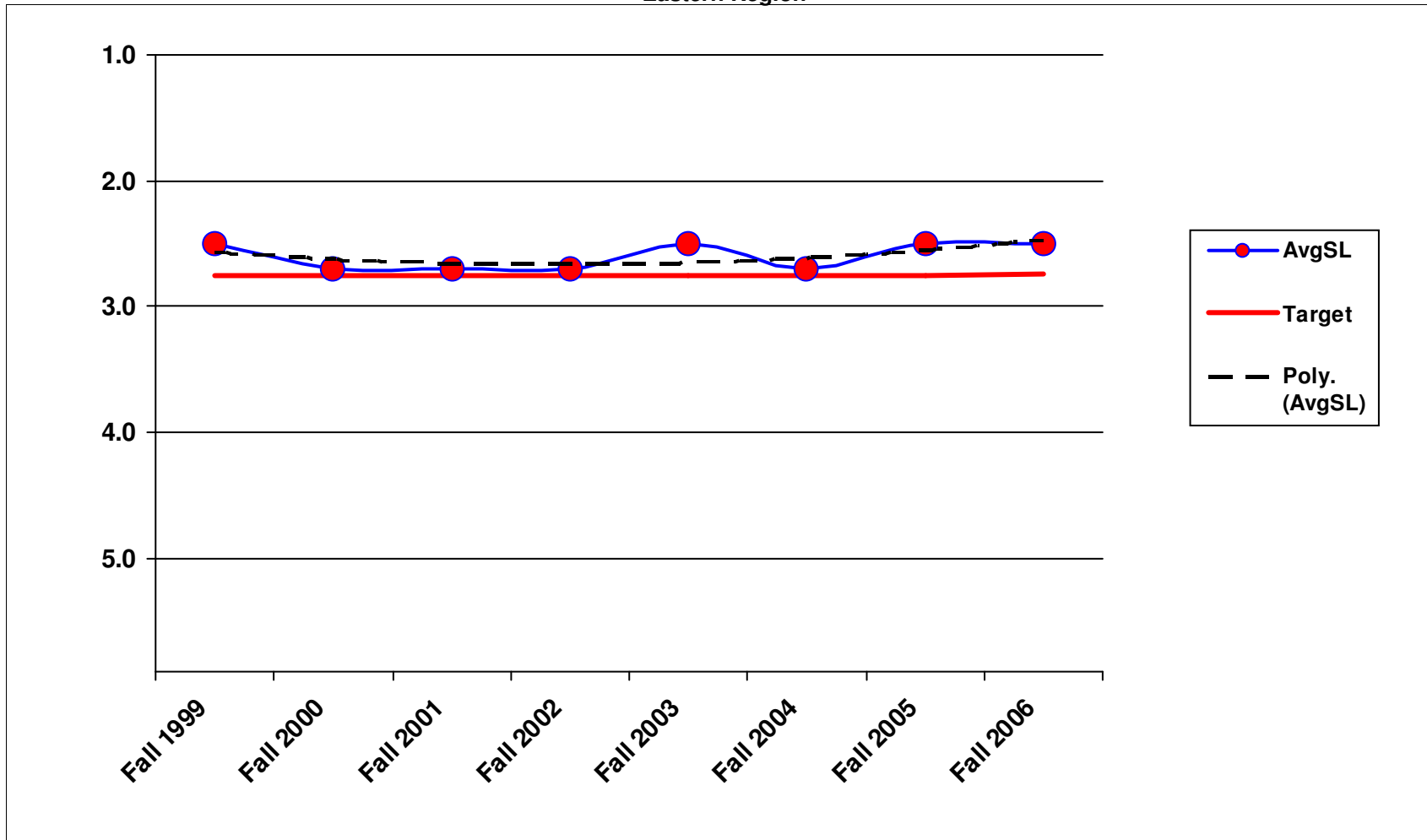
4A2 - Structural Bridge Repair Eastern Region



4A3 - Bridge Cleaning
Eastern Region

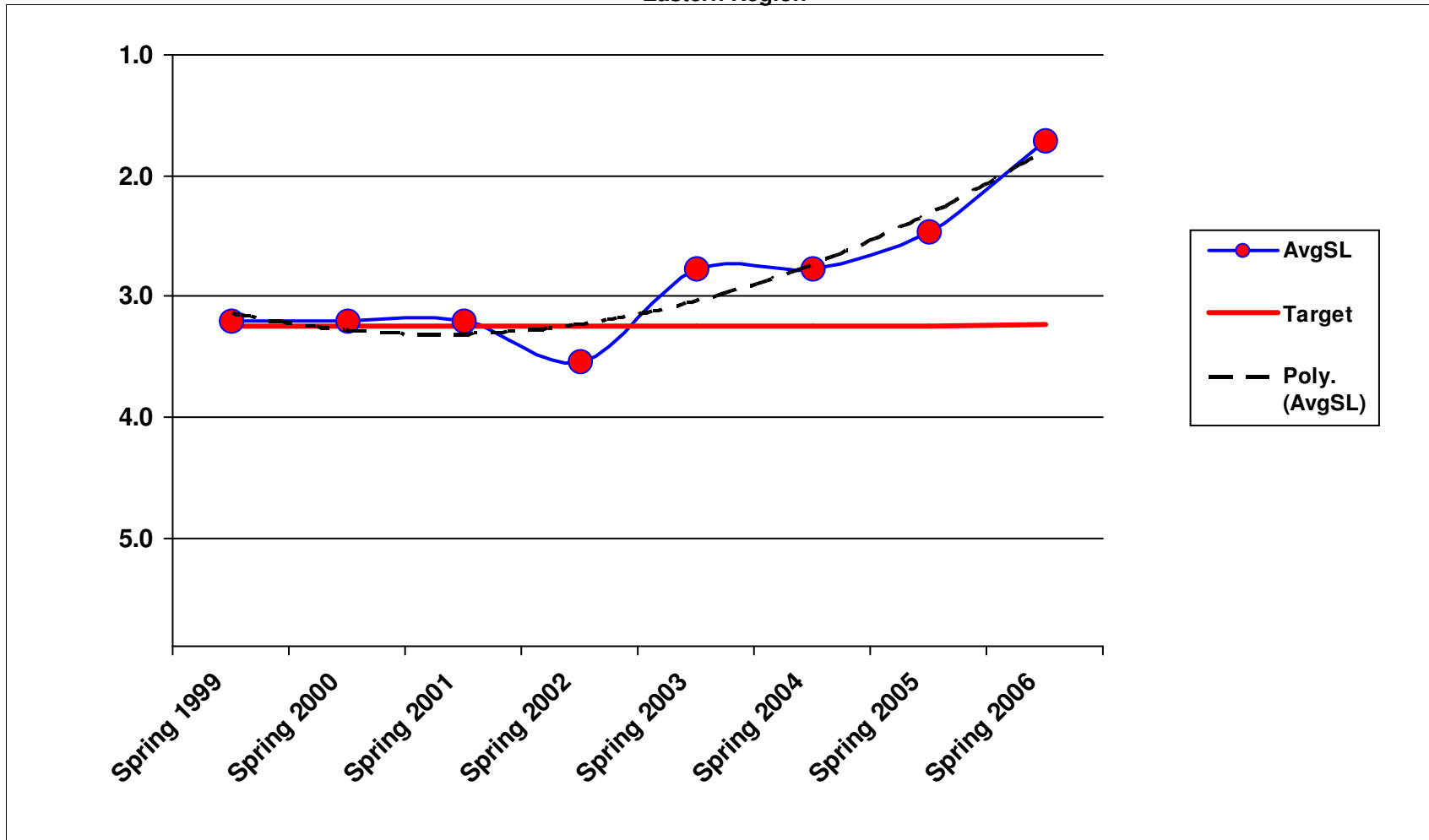


4B2 - Keller Ferry Operations Eastern Region



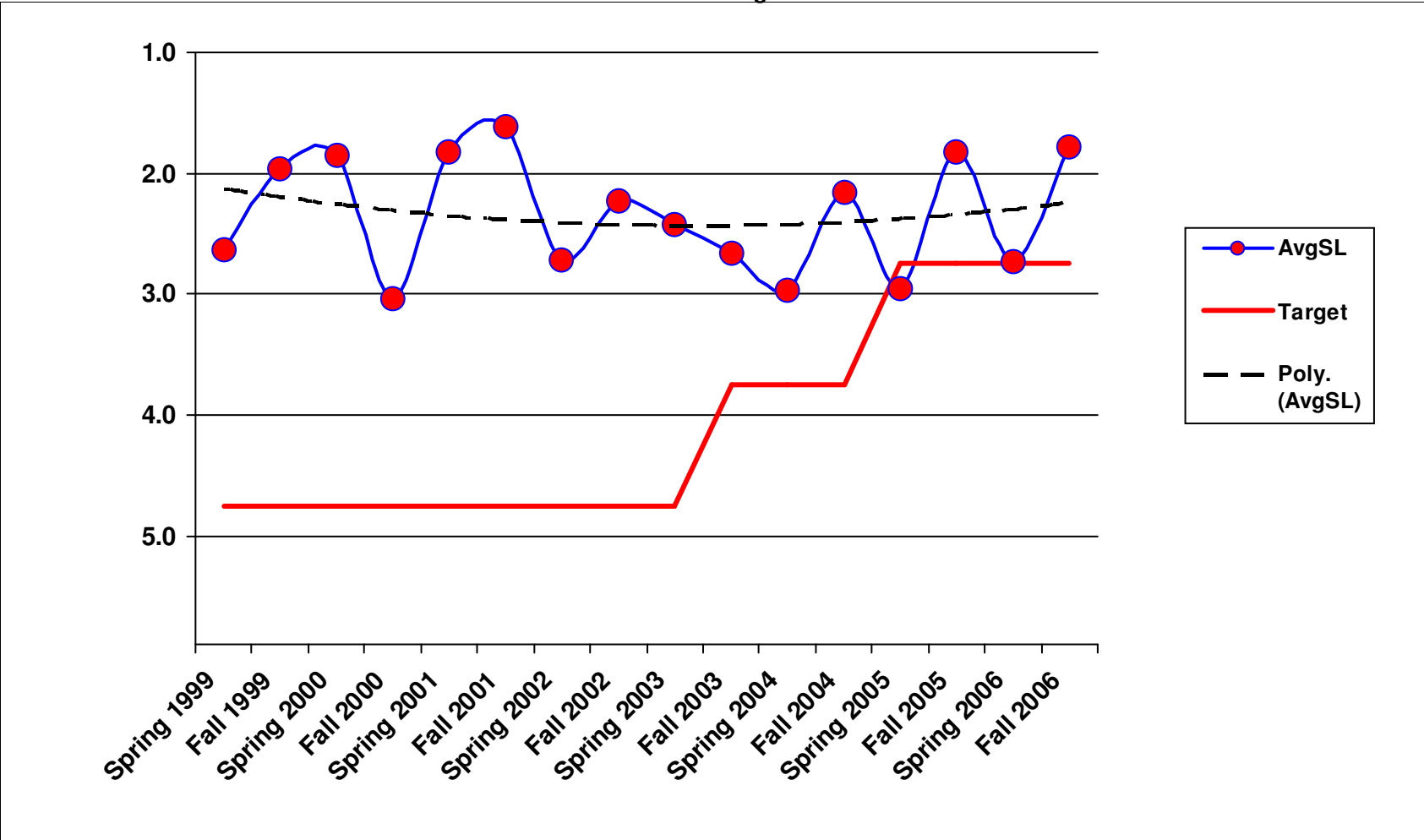
1/23/2007

5B1 - Snow and Ice Control Operations Eastern Region

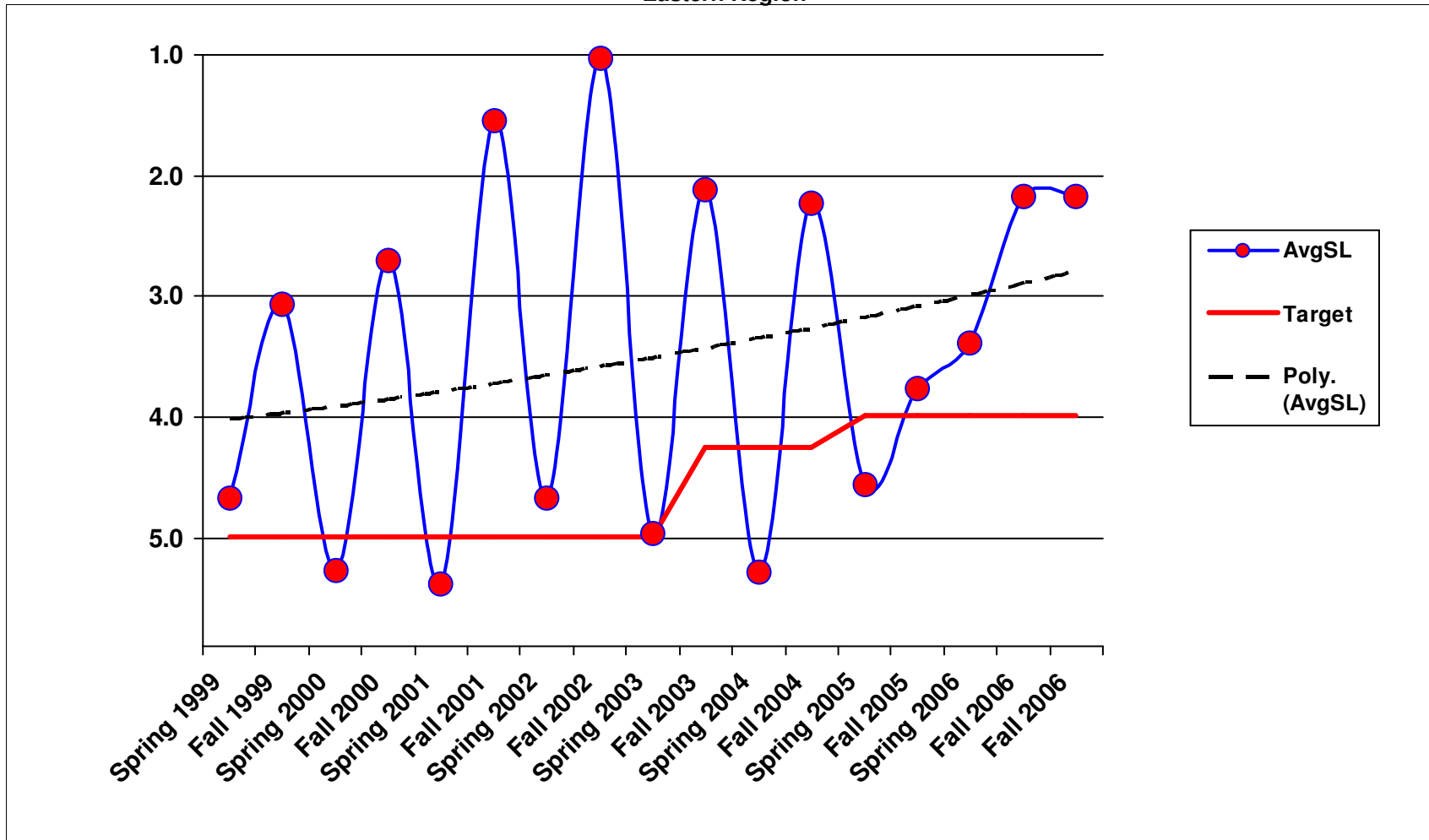


6A2 - Raised/Depressed Pavement Marker Maintenance

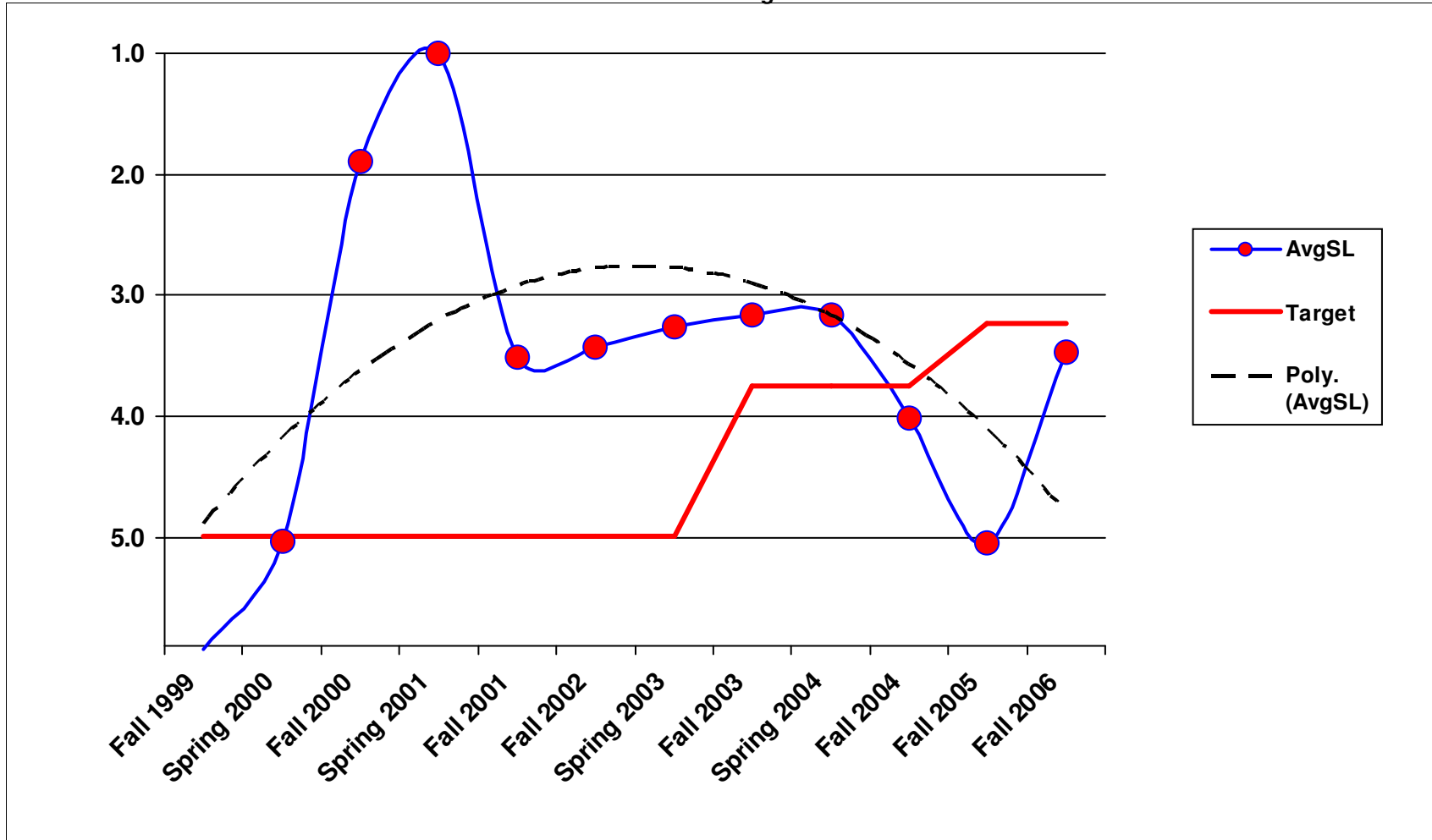
Eastern Region



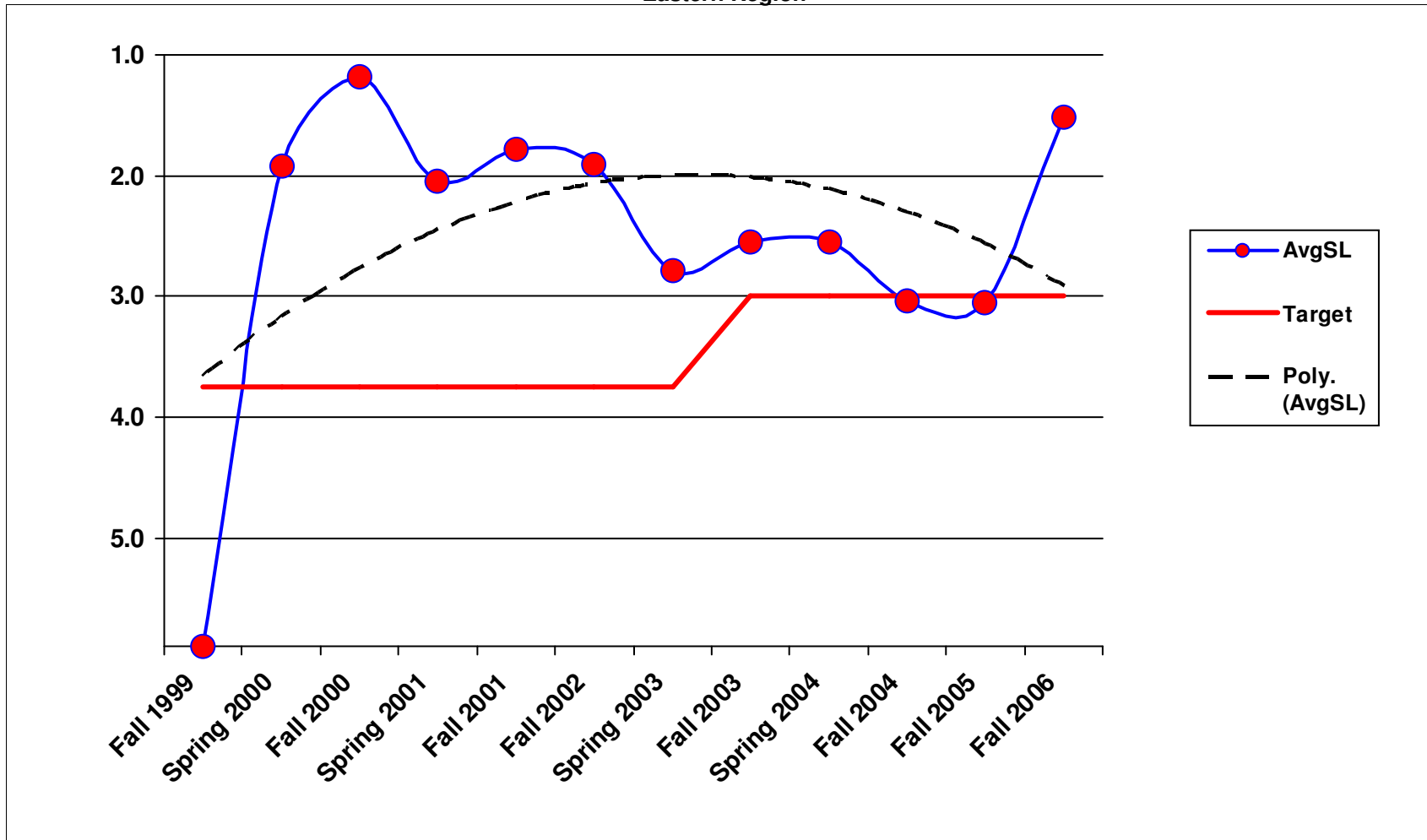
6A3 - Pavement Marking Maintenance Eastern Region



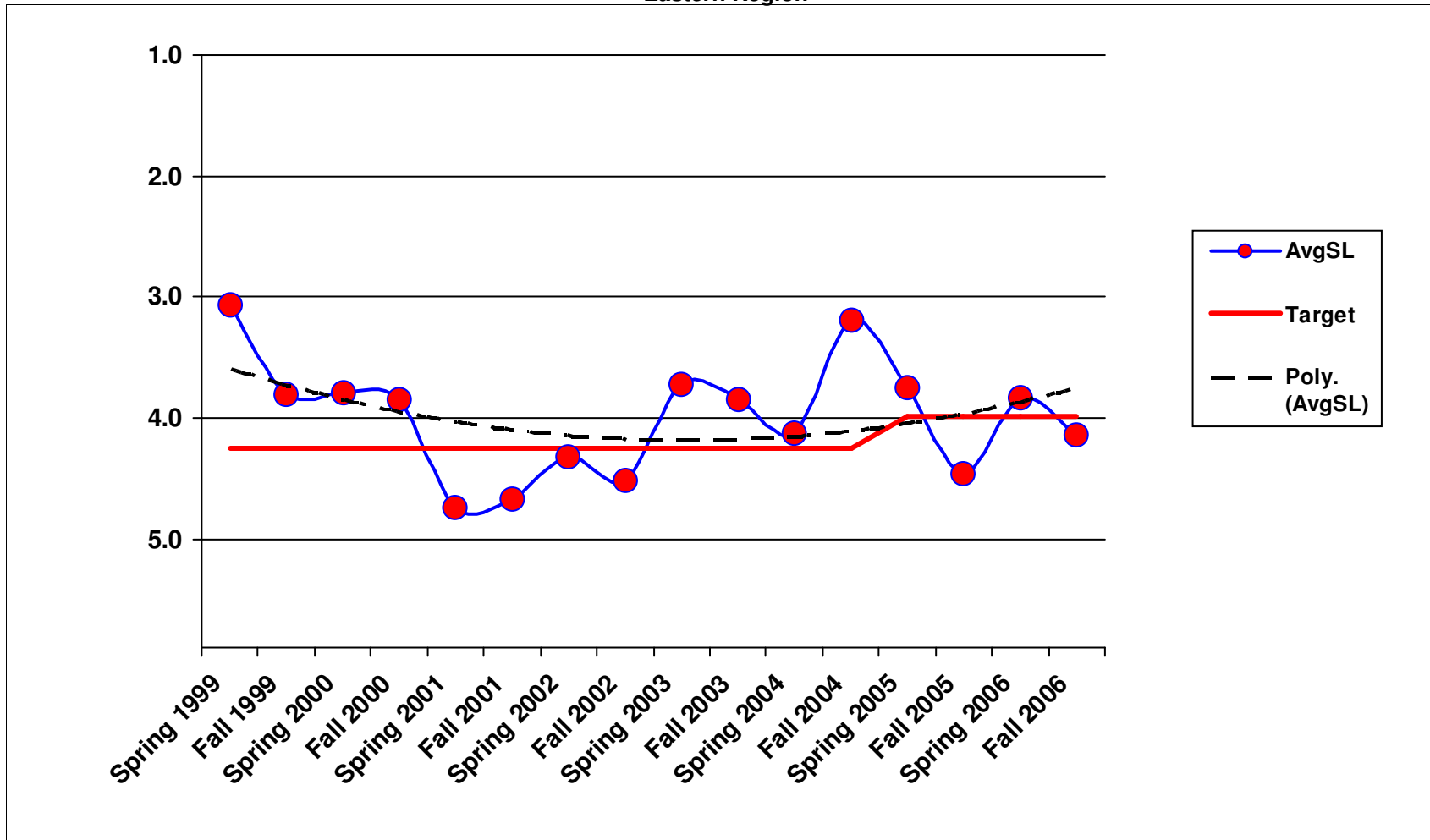
6A4 - Regulatory Sign Maintenance Eastern Region



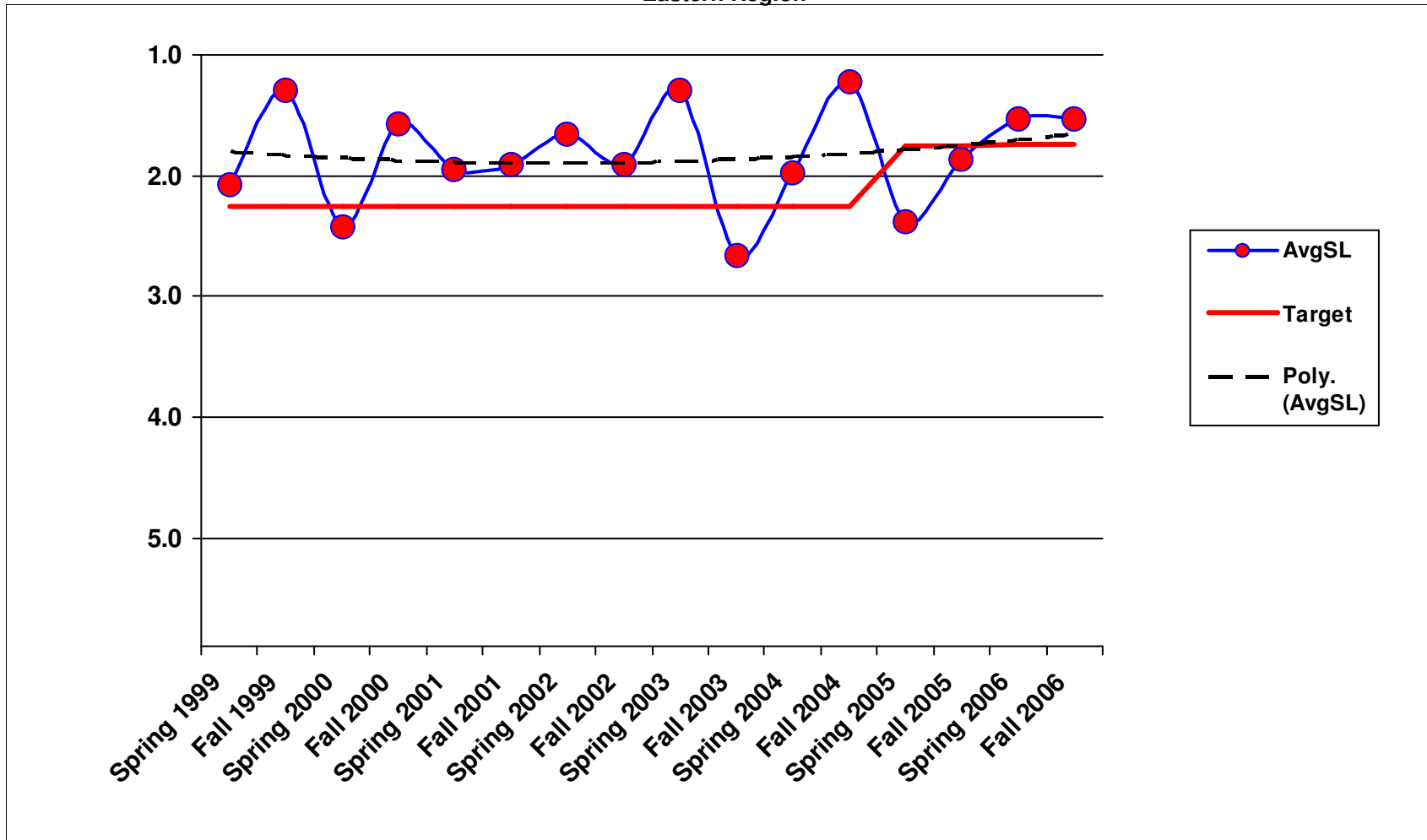
6A5 - Guide Sign Maintenance Eastern Region



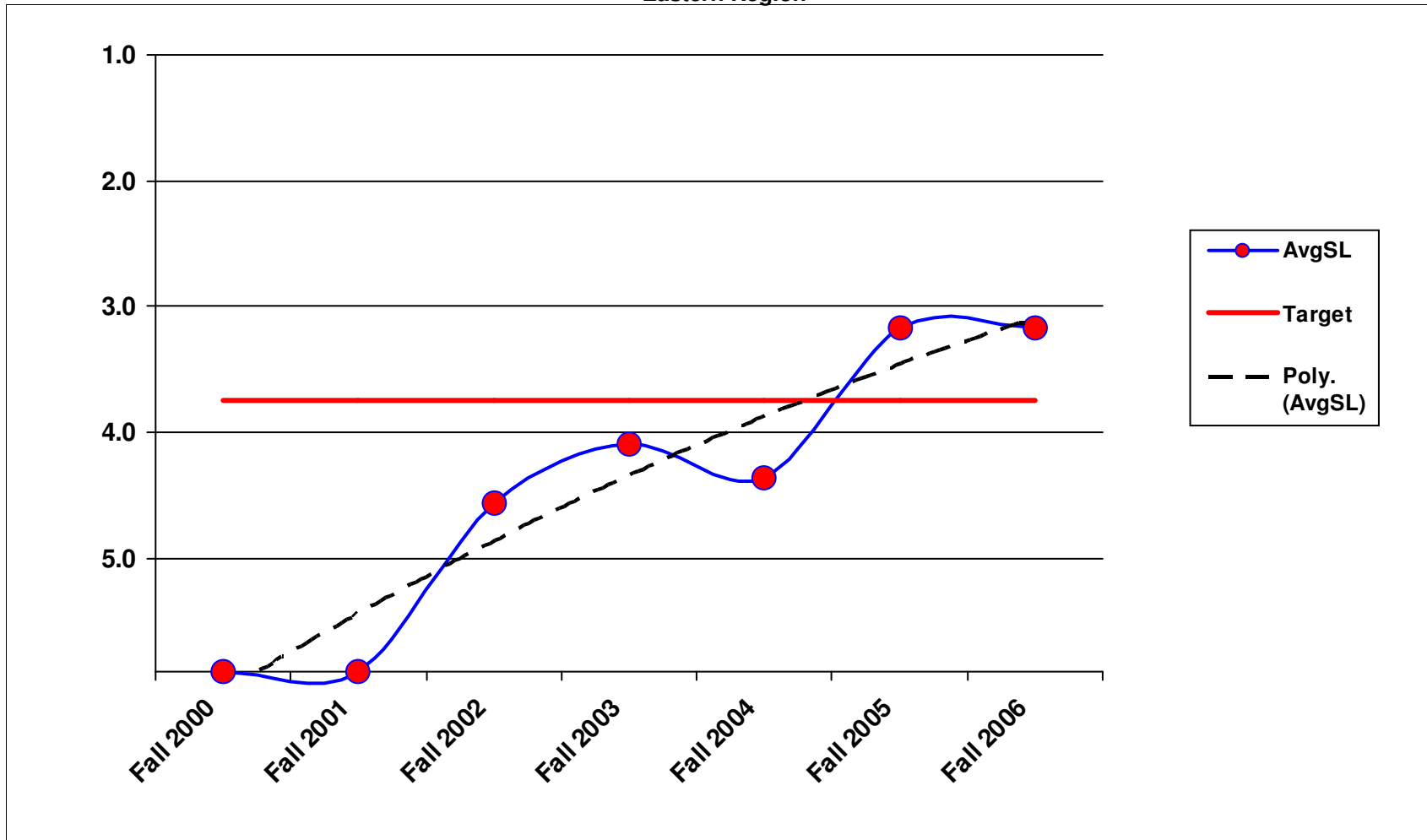
6A6 - Guidepost Maintenance Eastern Region



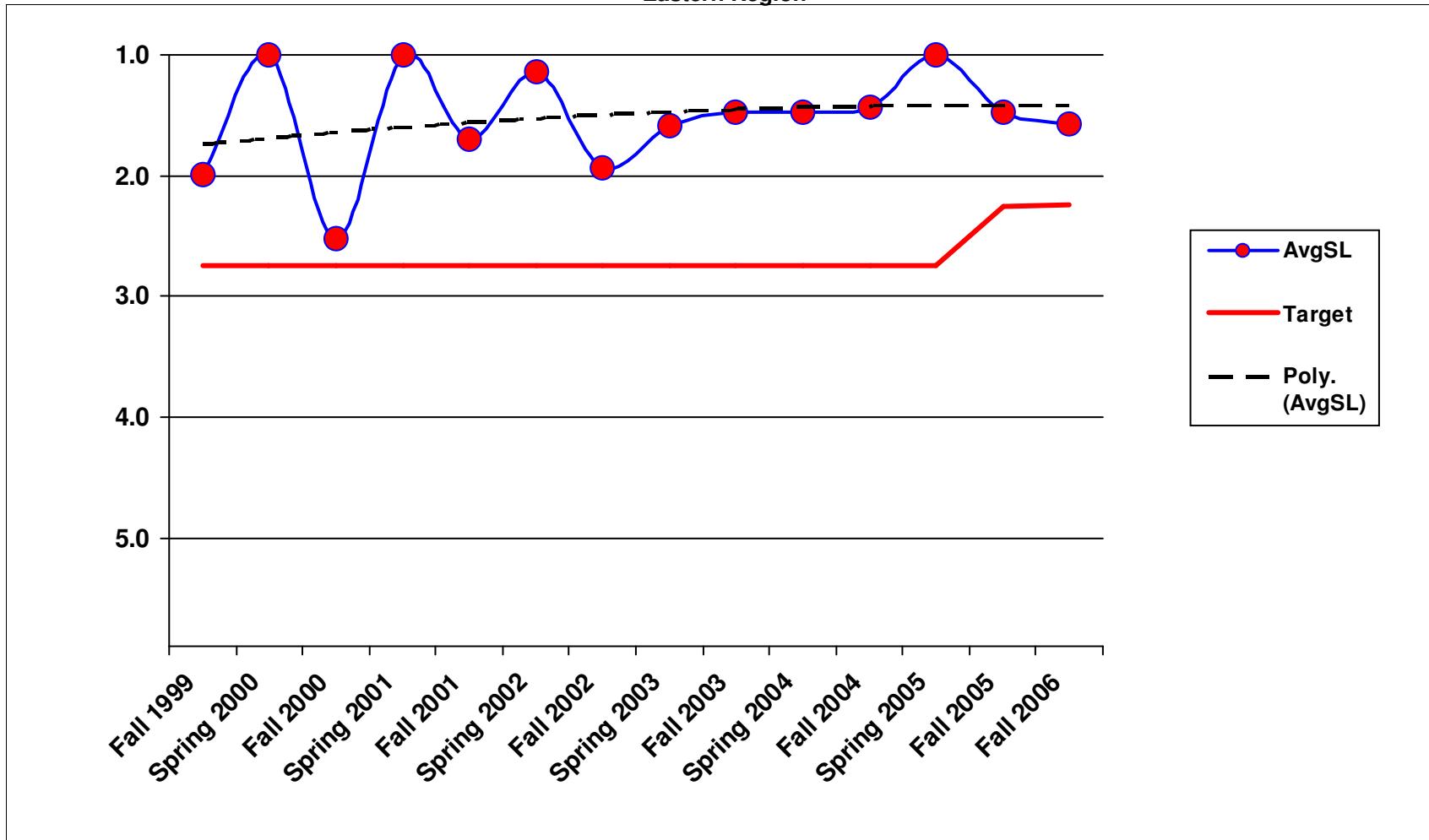
6A7 - Guardrail Maintenance Eastern Region



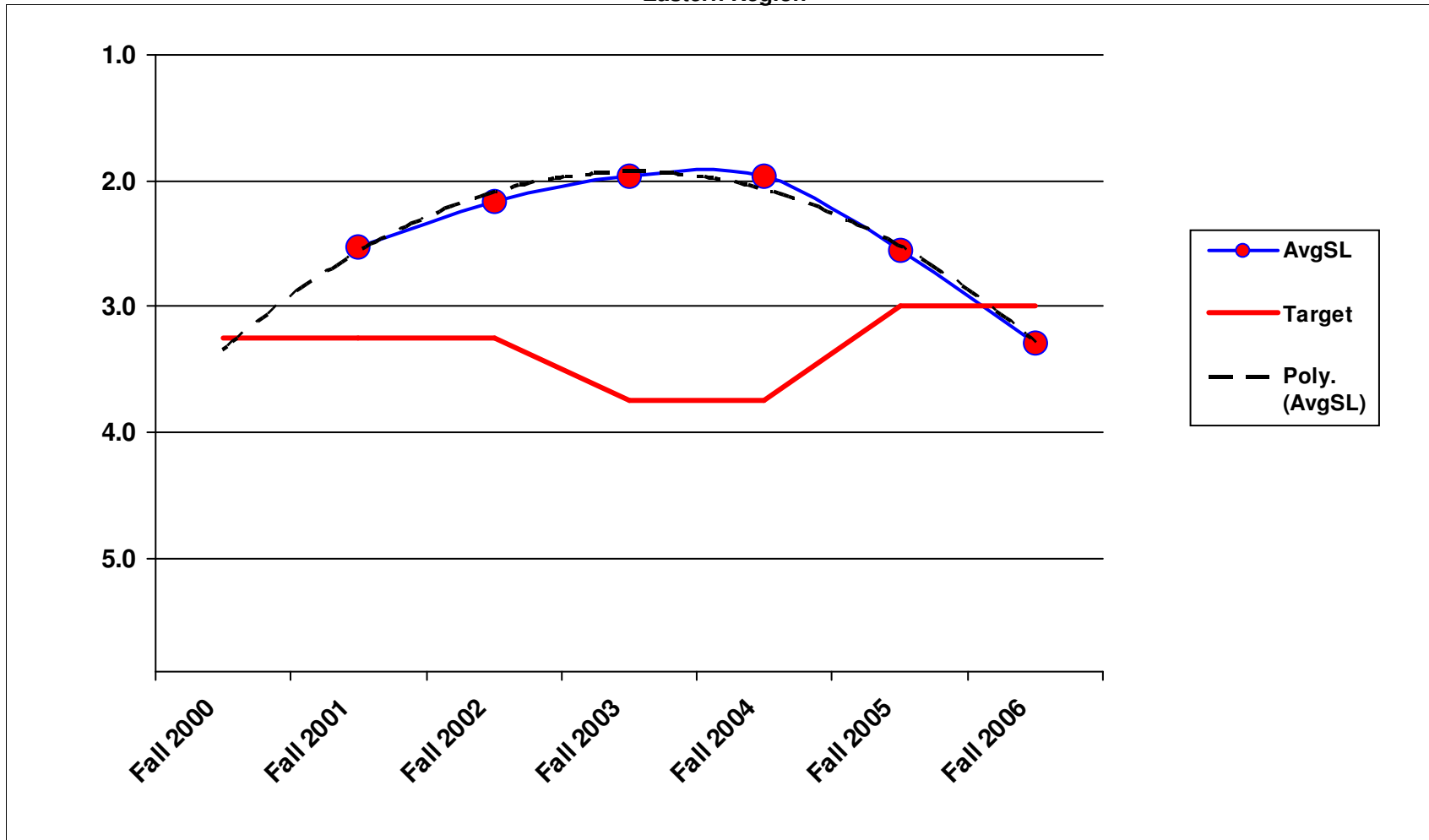
6B1 - Traffic Signal Systems Eastern Region



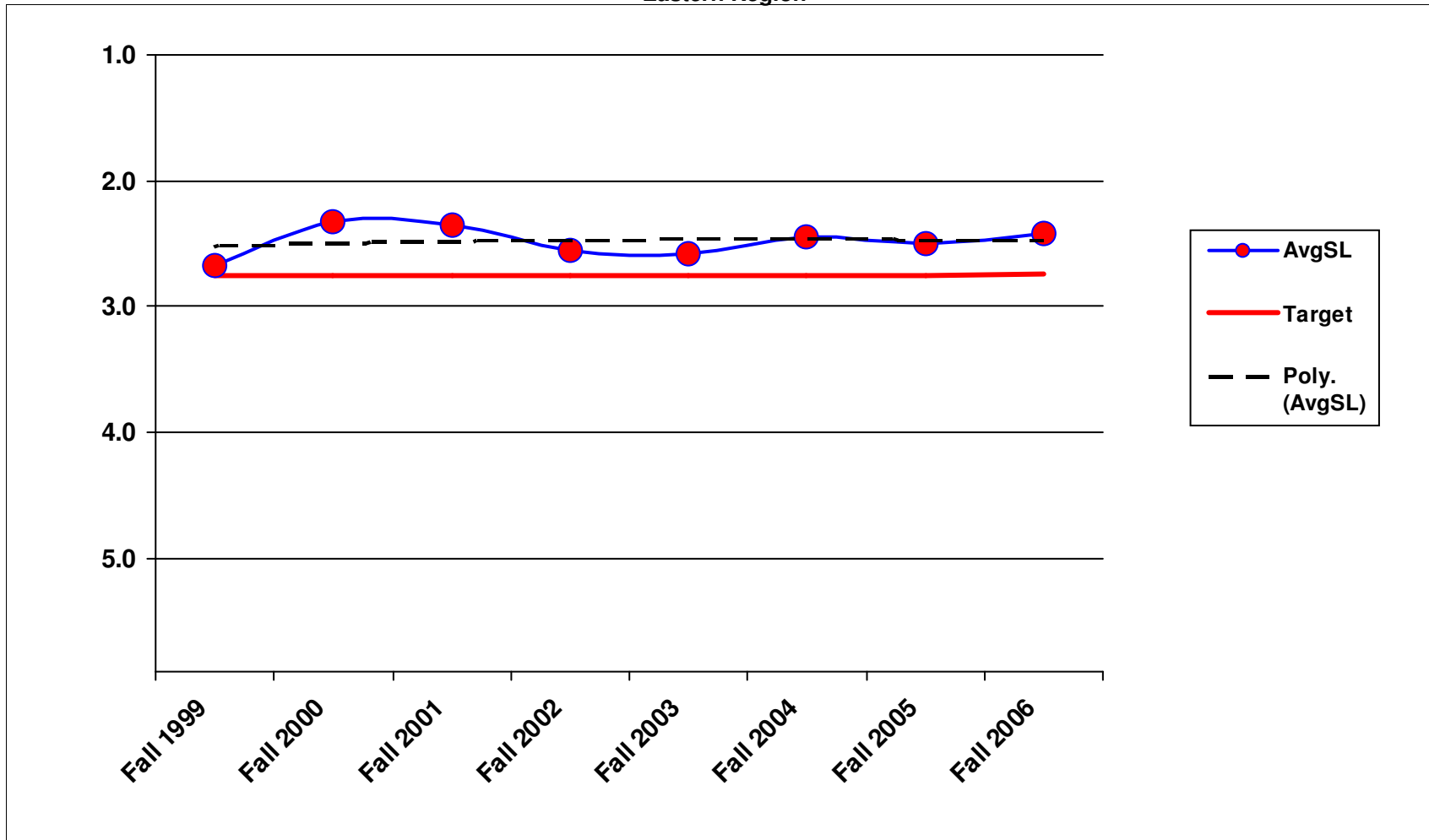
6B2 - Highway Lighting Systems Eastern Region



6B3 - Intelligent Transportaion Systems Eastern Region



7B1 - Rest Area Operations Eastern Region



1/23/2007