

Maintenance Accountability Process

Activity Service Level Targets and Service Levels Delivered

South Central Region - CY 2006

Activity	1.0		1.9		2.0		2.9		3.0		3.9		4.0		4.9		5.0		5.9	
	+	A	-		+	B	-		+	C	-		+	D	-		+	F	-	
Group - 1 Roadway Maintenance and Operations																				
1A1 Pavement Patching & Repair*		✓		⊙																
1A2 Crack Sealing*										✓	⊙									
1A3 Shoulder Maintenance							✓		⊙											
1A4 Sweeping and Cleaning		✓		⊙																
1B1 Safety Patrol									✓	⊙										
Group - 2 Drainage Maintenance and Slope Repair																				
2A1 Maintain Ditches				✓	⊙															
2A2 Maintain Culverts										✓	⊙									
2A3 Maintain Catch Basins and Inlets				✓	⊙															
2A4 Maintain Detention/Retention Basins										✓	⊙									
2A5 Slope Repair		✓		⊙																
Group - 3 Roadside and Vegetation Management																				
3A1 Litter Pickup													✓	⊙						
3A2 Noxious Weed Control		✓		⊙																
3A3 Nuisance Vegetation Control			✓			⊙														
3A4 Control of Vegetation Obstructions			✓			⊙														
3A5 Landscape Maintenance					✓						⊙									
Group - 4 Bridge and Urban Tunnel Maintenance and Operations																				
4A1 Bridge Deck Repair				✓	⊙															
4A2 Structural Bridge Repair										⊙	✓									
4A3 Bridge Cleaning				✓						⊙										
4B1 Movable and Floating Bridge Operations	✓			⊙																
Group - 5 Snow and Ice Control Operations																				
5B1 Snow and Ice Control Operations		✓							⊙											
Group - 6 Traffic Control Maintenance and Operations																				
6A1 Pavement Striping Maintenance***									⊙	✓										
6A2 Raised/Depressed Pavement Marker Maint.					⊙	✓														
6A3 Pavement Marking Maintenance				✓							⊙									
6A4 Regulatory Sign Maintenance									⊙	✓										
6A5 Guide Sign Maintenance		✓				⊙														
6A6 Guidepost Maintenance						✓					⊙									
6A7 Guardrail Maintenance		✓	⊙																	
6B1 Traffic Signal Systems									✓	⊙										
6B2 Highway Lighting Systems		✓		⊙																
6B3 Intelligent Transportation Systems				✓		⊙														
Group - 7 Rest Area Operations																				
7B1 Rest Area Operations					✓	⊙														

*Data collected from WSPMS

*** Revised Performance measure with revised target

Key

⊙ Current Law Budget Service Level Commitment



Service Level Currently Delivered by WSDOT

Maintenance Accountability Process

Activity Service Level Targets and Service Levels Delivered

South Central Area 1 - CY 2006

Activity	1.0		1.9		2.0		2.9		3.0		3.9		4.0		4.9		5.0		5.9	
	+	A	-		+	B	-		+	C	-		+	D	-		+	F	-	
Group - 1 Roadway Maintenance and Operations																				
1A1 Pavement Patching & Repair*	✓				⊙															
1A2 Crack Sealing*											⊙		✓							
1A3 Shoulder Maintenance							✓		⊙											
1A4 Sweeping and Cleaning					✓	⊙														
1B1 Safety Patrol									⊙	✓										
Group - 2 Drainage Maintenance and Slope Repair																				
2A1 Maintain Ditches						⊙			✓											
2A2 Maintain Culverts										⊙				✓						
2A3 Maintain Catch Basins and Inlets						⊙							✓							
2A5 Slope Repair		✓				⊙														
Group - 3 Roadside and Vegetation Management																				
3A1 Litter Pickup														⊙					✓	
3A2 Noxious Weed Control					✓	⊙														
3A3 Nuisance Vegetation Control		✓					⊙													
3A4 Control of Vegetation Obstructions						✓	⊙													
Group - 4 Bridge and Urban Tunnel Maintenance and Operations																				
4A1 Bridge Deck Repair			✓				⊙													
4A3 Bridge Cleaning						✓				⊙										
Group - 5 Snow and Ice Control Operations																				
5B1 Snow and Ice Control Operations		✓							⊙											
Group - 6 Traffic Control Maintenance and Operations																				
6A2 Raised/Depressed Pavement Marker Maint.						⊙														✓
6A3 Pavement Marking Maintenance						✓					⊙									
6A6 Guidepost Maintenance						✓					⊙									
6A7 Guardrail Maintenance		✓	⊙																	

*Data collected from WSPMS

*** Revised Performance measure with revised target

Key

⊙ Current Law Budget Service Level Commitment

✓ Service Level Currently Delivered by WSDOT

Maintenance Accountability Process

Activity Service Level Targets and Service Levels Delivered

South Central Area 2 - CY 2006

Activity	1.0		1.9		2.0		2.9		3.0		3.9		4.0		4.9		5.0		5.9	
	+	A	-		+	B	-		+	C	-		+	D	-		+	F	-	
Group - 1 Roadway Maintenance and Operations																				
1A1 Pavement Patching & Repair*		✓		⊙																
1A2 Crack Sealing*										⊙		✓								
1A3 Shoulder Maintenance					✓				⊙											
1A4 Sweeping and Cleaning	✓				⊙															
1B1 Safety Patrol	✓								⊙											
Group - 2 Drainage Maintenance and Slope Repair																				
2A1 Maintain Ditches					⊙	✓														
2A2 Maintain Culverts					✓					⊙										
2A3 Maintain Catch Basins and Inlets	✓								⊙											
2A5 Slope Repair		✓							⊙											
Group - 3 Roadside and Vegetation Management																				
3A1 Litter Pickup													✓	⊙						
3A2 Noxious Weed Control	✓								⊙											
3A3 Nuisance Vegetation Control		✓							⊙											
3A4 Control of Vegetation Obstructions						✓			⊙											
Group - 4 Bridge and Urban Tunnel Maintenance and Operations																				
4A1 Bridge Deck Repair									⊙	✓										
4A3 Bridge Cleaning					✓						⊙									
Group - 5 Snow and Ice Control Operations																				
5B1 Snow and Ice Control Operations		✓								⊙										
Group - 6 Traffic Control Maintenance and Operations																				
6A2 Raised/Depressed Pavement Marker Maint.	✓								⊙											
6A3 Pavement Marking Maintenance					✓							⊙								
6A6 Guidepost Maintenance						✓						⊙								
6A7 Guardrail Maintenance		✓	⊙																	

*Data collected from WSPMS

*** Revised Performance measure with revised target

Key

- ⊙ Current Law Budget Service Level Commitment
- ✓ Service Level Currently Delivered by WSDOT

Maintenance Accountability Process

Activity Service Level Targets and Service Levels Delivered

South Central Area 3 - CY 2006

Activity	1.0		1.9		2.0		2.9		3.0		3.9		4.0		4.9		5.0		5.9	
	+	A	-		+	B	-		+	C	-		+	D	-		+	F	-	
Group - 1 Roadway Maintenance and Operations																				
1A1 Pavement Patching & Repair*		✓		⊙																
1A2 Crack Sealing*									✓	⊙										
1A3 Shoulder Maintenance					✓				⊙											
1A4 Sweeping and Cleaning	✓				⊙															
1B1 Safety Patrol									⊙					✓						
Group - 2 Drainage Maintenance and Slope Repair																				
2A1 Maintain Ditches	✓					⊙														
2A2 Maintain Culverts									⊙					✓						
2A3 Maintain Catch Basins and Inlets	✓					⊙														
2A5 Slope Repair					✓	⊙														
Group - 3 Roadside and Vegetation Management																				
3A1 Litter Pickup														✓	⊙					
3A2 Noxious Weed Control	✓					⊙														
3A3 Nuisance Vegetation Control	✓							⊙												
3A4 Control of Vegetation Obstructions	✓							⊙												
Group - 4 Bridge and Urban Tunnel Maintenance and Operations																				
4A1 Bridge Deck Repair	✓							⊙												
4A3 Bridge Cleaning			✓							⊙										
Group - 5 Snow and Ice Control Operations																				
5B1 Snow and Ice Control Operations		✓							⊙											
Group - 6 Traffic Control Maintenance and Operations																				
6A2 Raised/Depressed Pavement Marker Maint.						⊙			✓											
6A3 Pavement Marking Maintenance					✓						⊙									
6A6 Guidepost Maintenance											✓	⊙								
6A7 Guardrail Maintenance		✓	⊙																	

*Data collected from WSPMS

*** Revised Performance measure with revised target

Key

- ⊙ Current Law Budget Service Level Commitment
- ✓ Service Level Currently Delivered by WSDOT

Maintenance Accountability Process

Activity Service Level Targets and Service Levels Delivered

South Central Area 4 - CY 2006

Activity	1.0		1.9		2.0		2.9		3.0		3.9		4.0		4.9		5.0		5.9	
	+	A	-		+	B	-		+	C	-		+	D	-		+	F	-	
Group - 1 Roadway Maintenance and Operations																				
1A1 Pavement Patching & Repair*		✓		⊙																
1A2 Crack Sealing*									✓		⊙									
1A3 Shoulder Maintenance							✓		⊙											
1A4 Sweeping and Cleaning	✓				⊙															
1B1 Safety Patrol									⊙	✓										
Group - 2 Drainage Maintenance and Slope Repair																				
2A1 Maintain Ditches		✓				⊙														
2A2 Maintain Culverts										✓	⊙									
2A3 Maintain Catch Basins and Inlets					✓				⊙											
2A5 Slope Repair		✓				⊙														
Group - 3 Roadside and Vegetation Management																				
3A1 Litter Pickup									✓								⊙			
3A2 Noxious Weed Control		✓				⊙														
3A3 Nuisance Vegetation Control								⊙		✓										
3A4 Control of Vegetation Obstructions	✓							⊙												
Group - 4 Bridge and Urban Tunnel Maintenance and Operations																				
4A1 Bridge Deck Repair								✓	⊙											
4A3 Bridge Cleaning					✓						⊙									
Group - 5 Snow and Ice Control Operations																				
5B1 Snow and Ice Control Operations	✓									⊙										
Group - 6 Traffic Control Maintenance and Operations																				
6A2 Raised/Depressed Pavement Marker Maint.		✓				⊙														
6A3 Pavement Marking Maintenance					✓							⊙								
6A6 Guidepost Maintenance							✓					⊙								
6A7 Guardrail Maintenance		⊙	✓																	

*Data collected from WSPMS

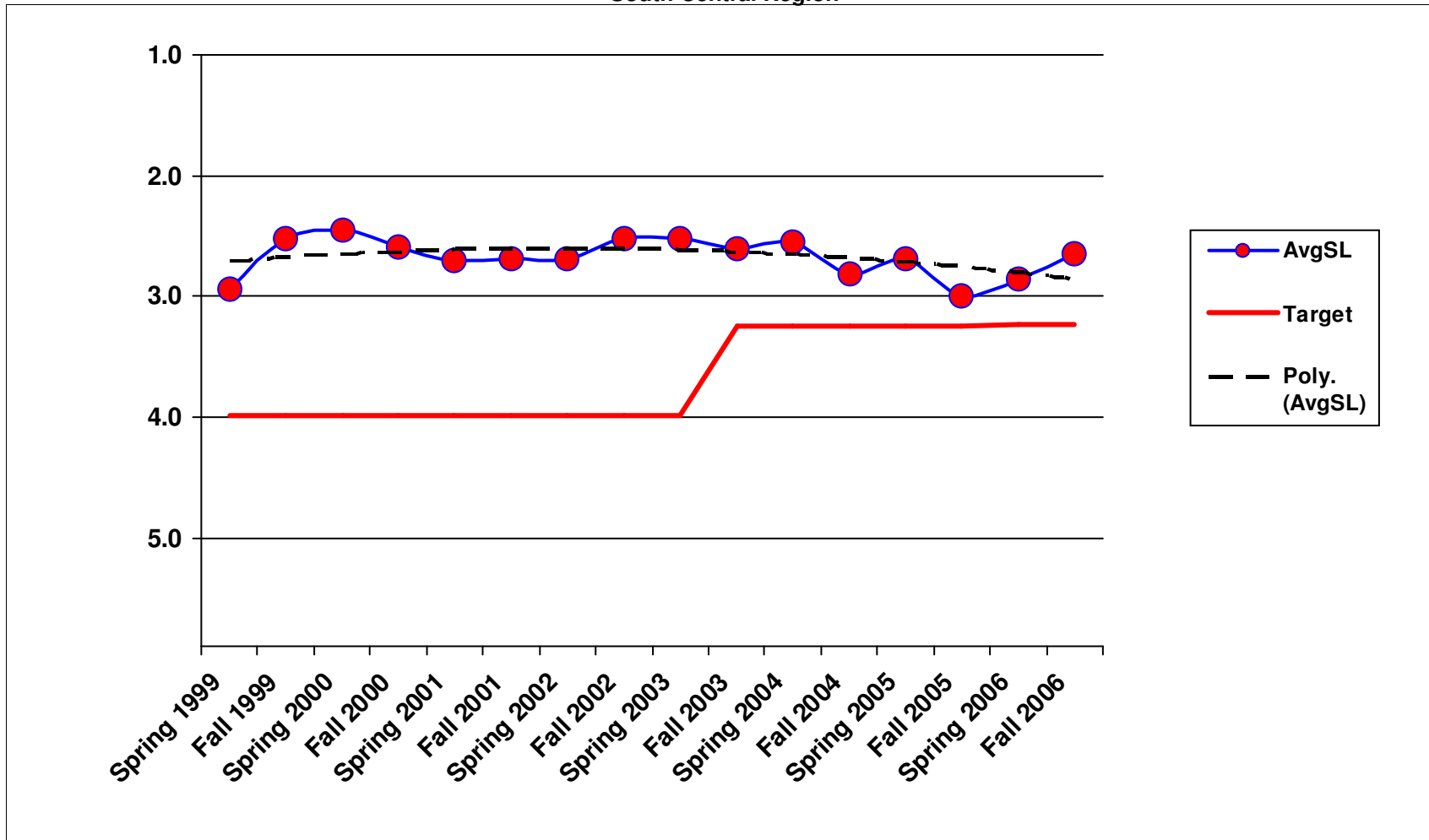
*** Revised Performance measure with revised target

Key

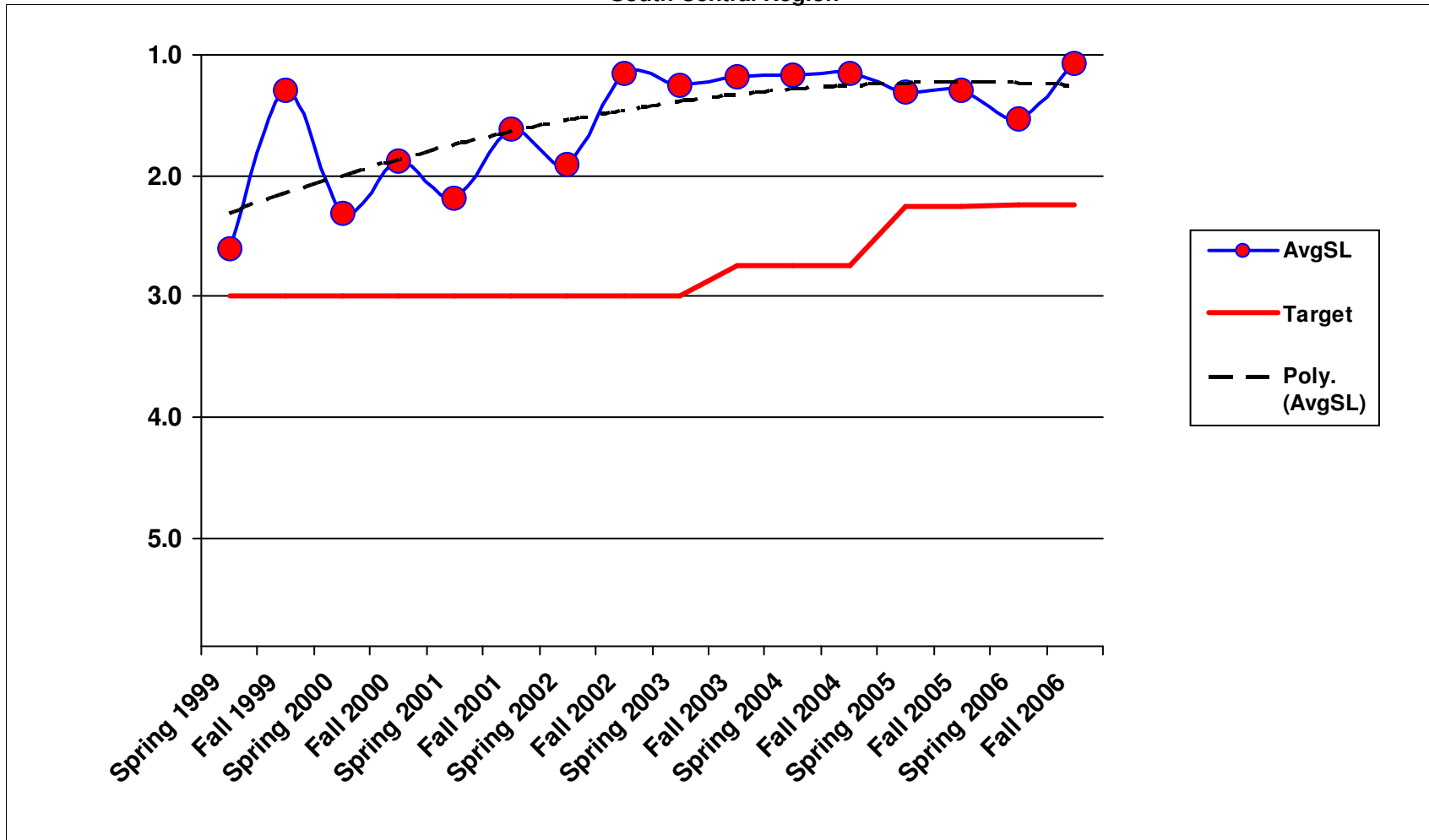
⊙ Current Law Budget Service Level Commitment

✓ Service Level Currently Delivered by WSDOT

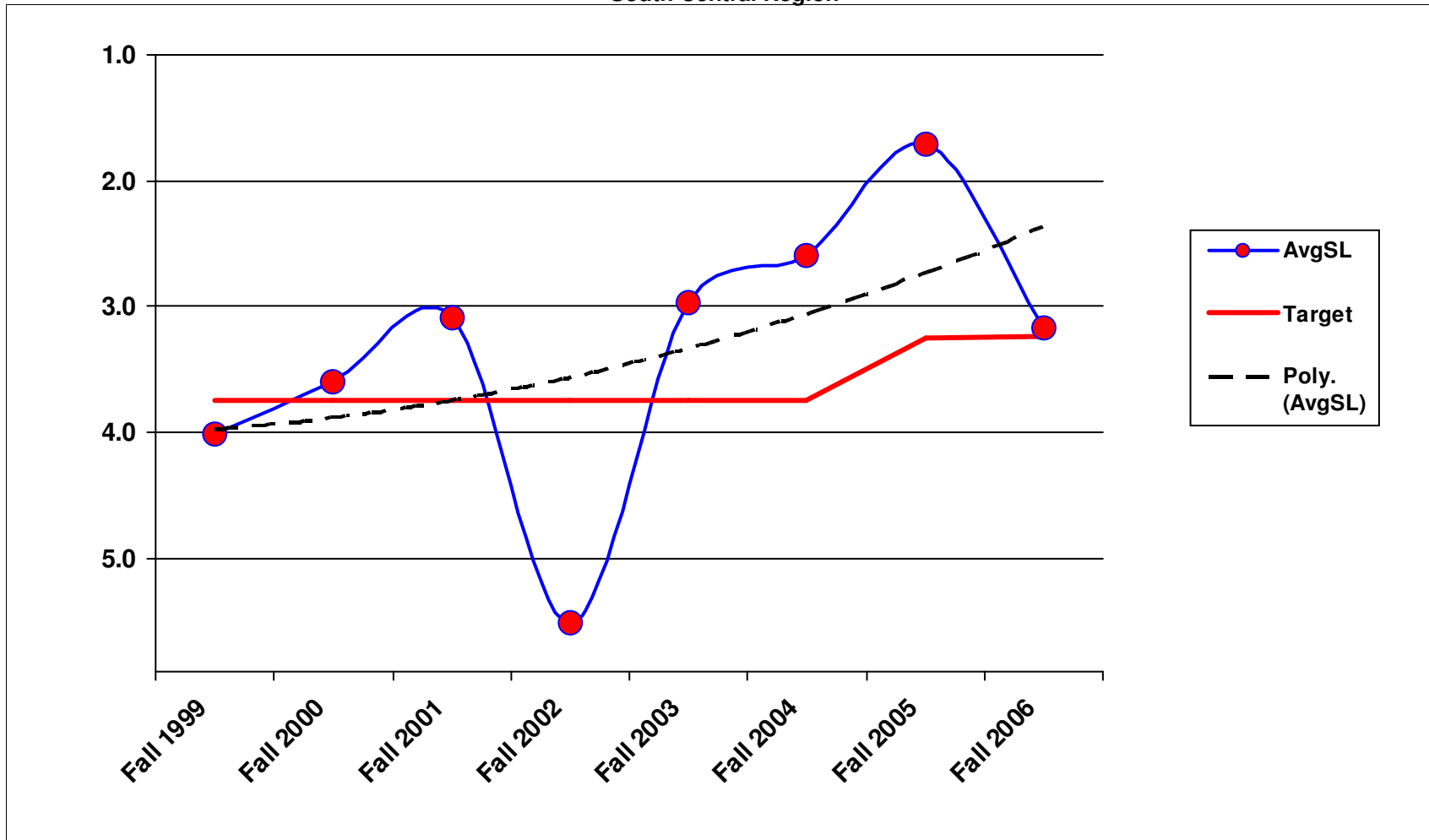
1A3 - Shoulder Maintenance South Central Region



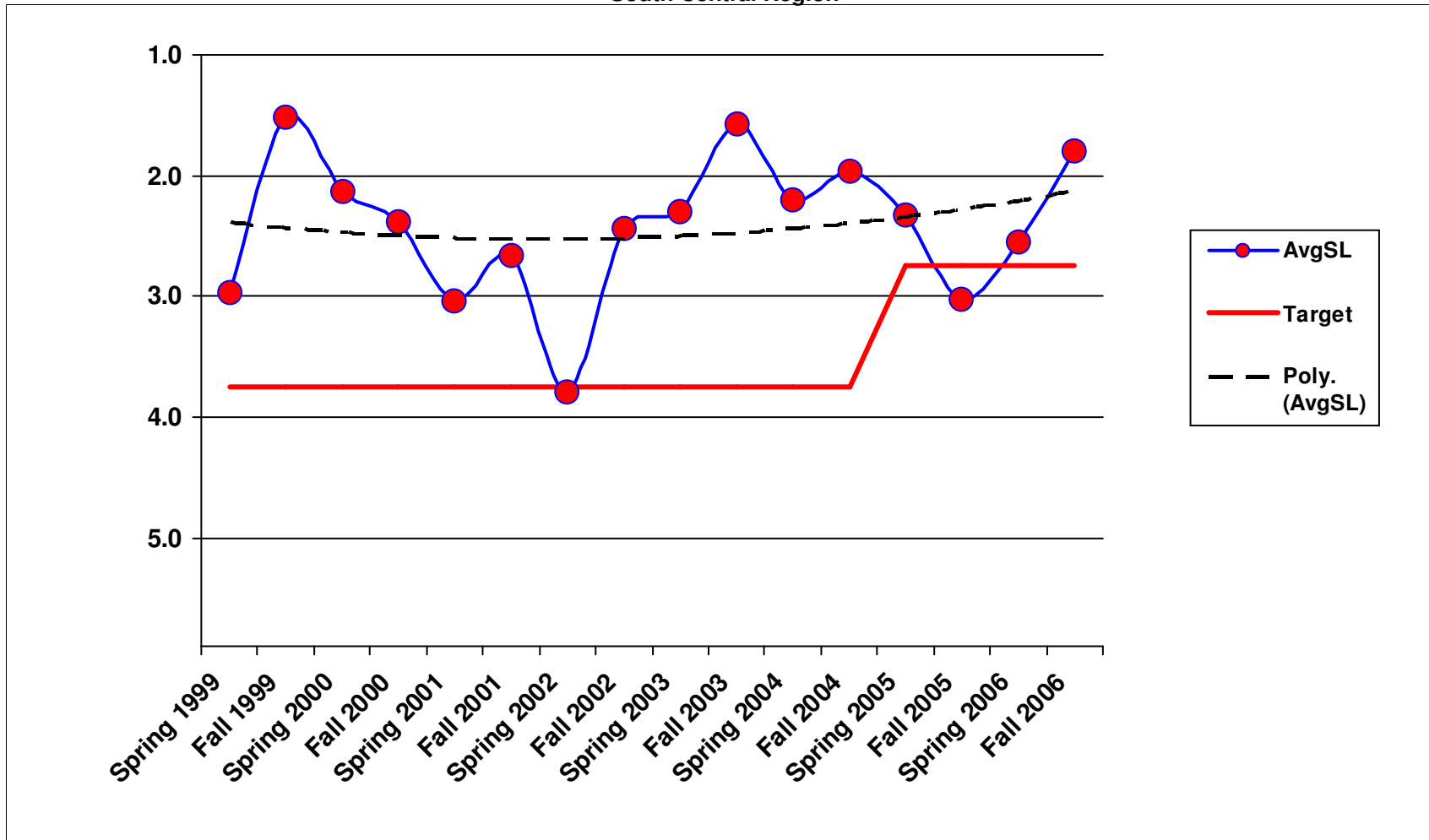
1A4 - Sweeping and Cleaning
South Central Region



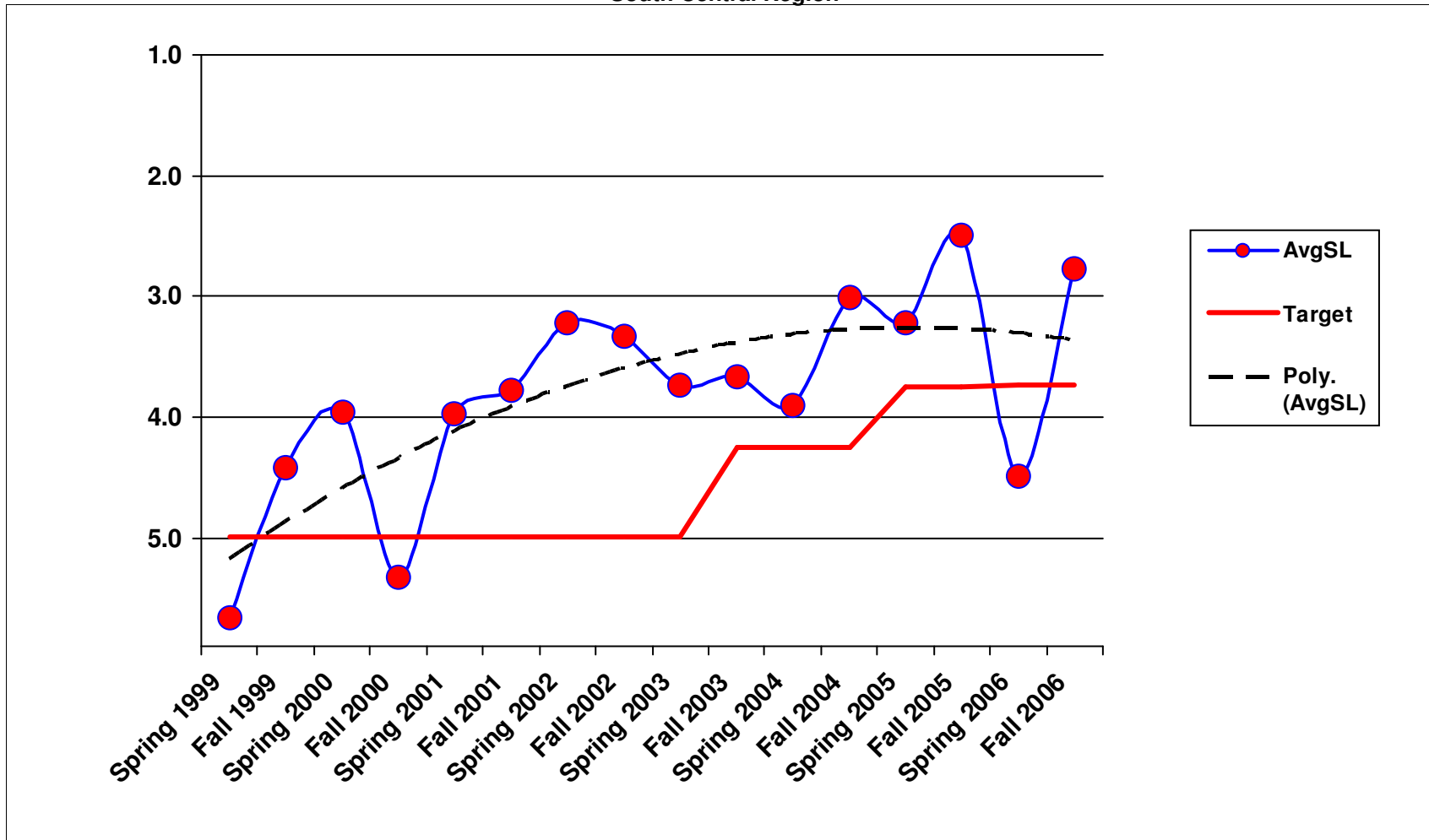
1B1 - Safety Patrol
South Central Region



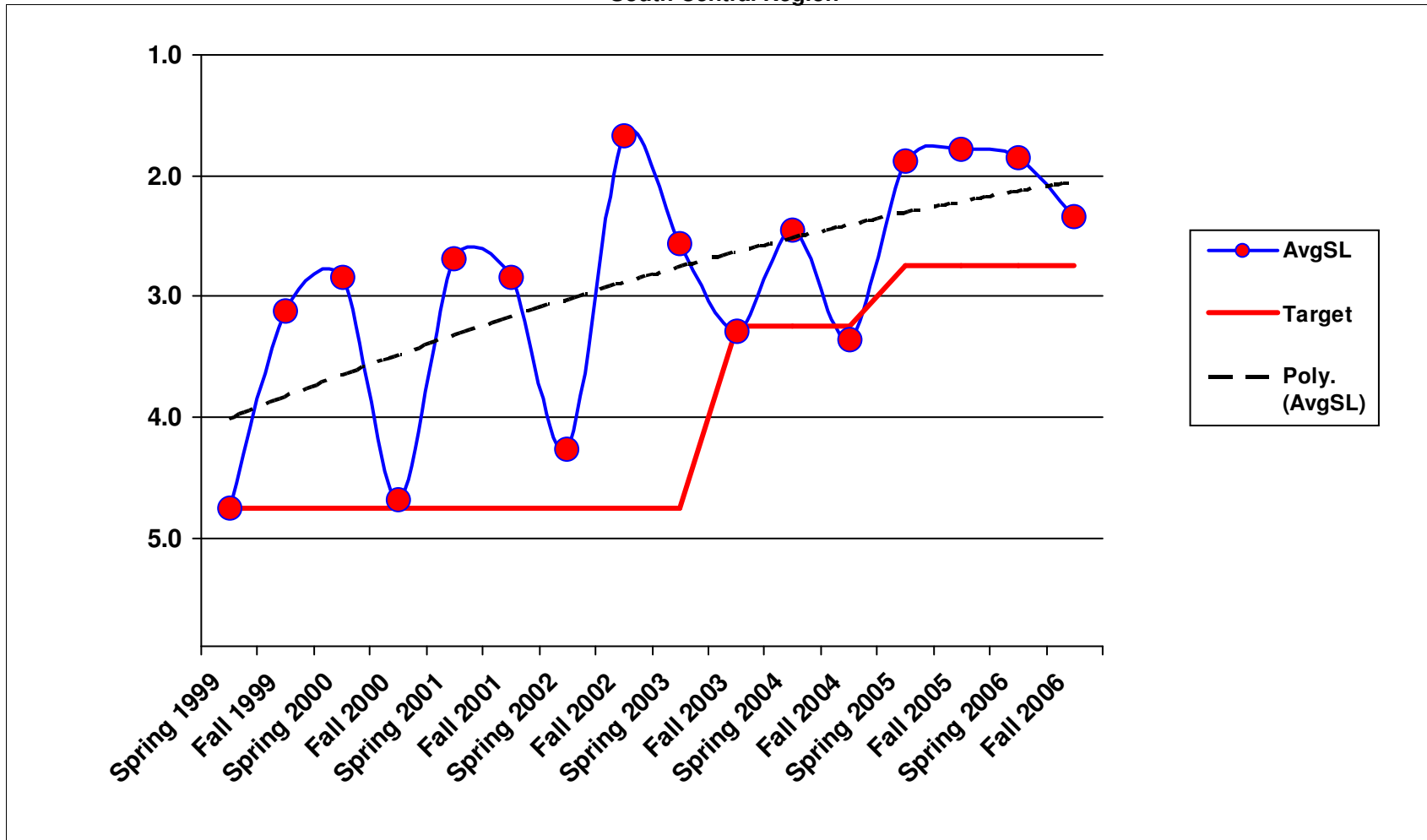
2A1 - Maintain Ditches
South Central Region



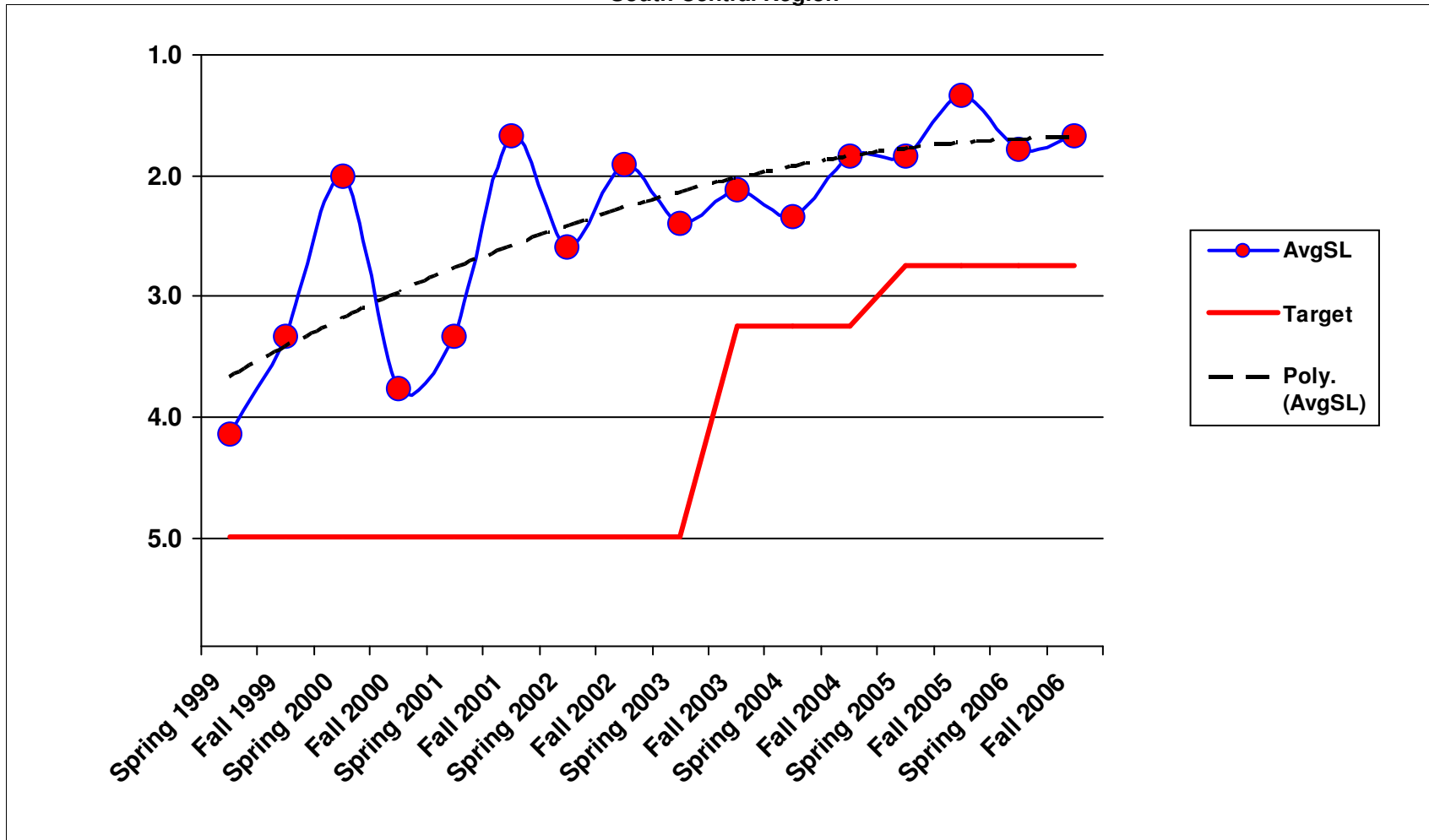
2A2 - Maintain Culverts
South Central Region



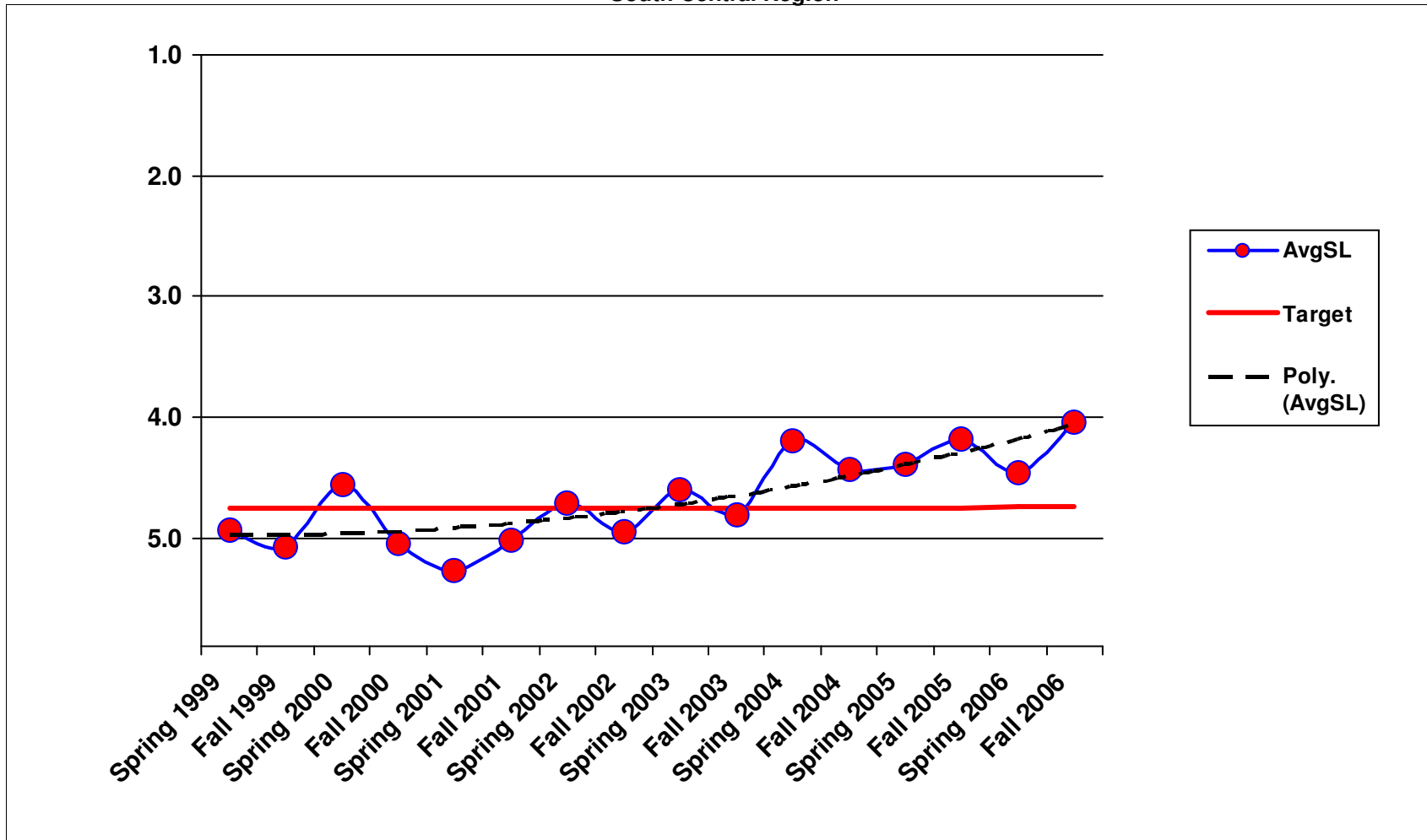
2A3 - Maintain Catch Basins and Inlets South Central Region



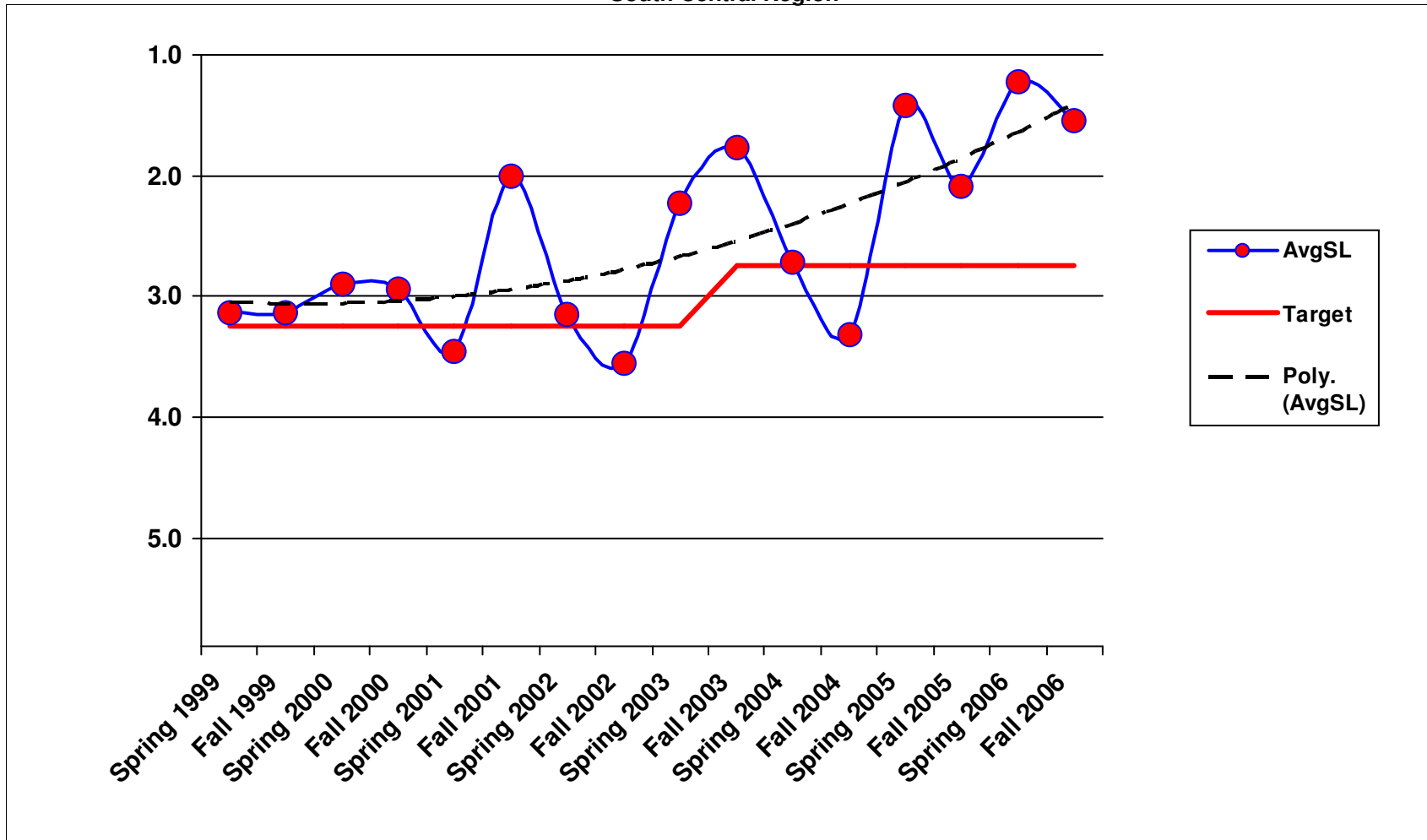
2A5 - Slope Repair
South Central Region



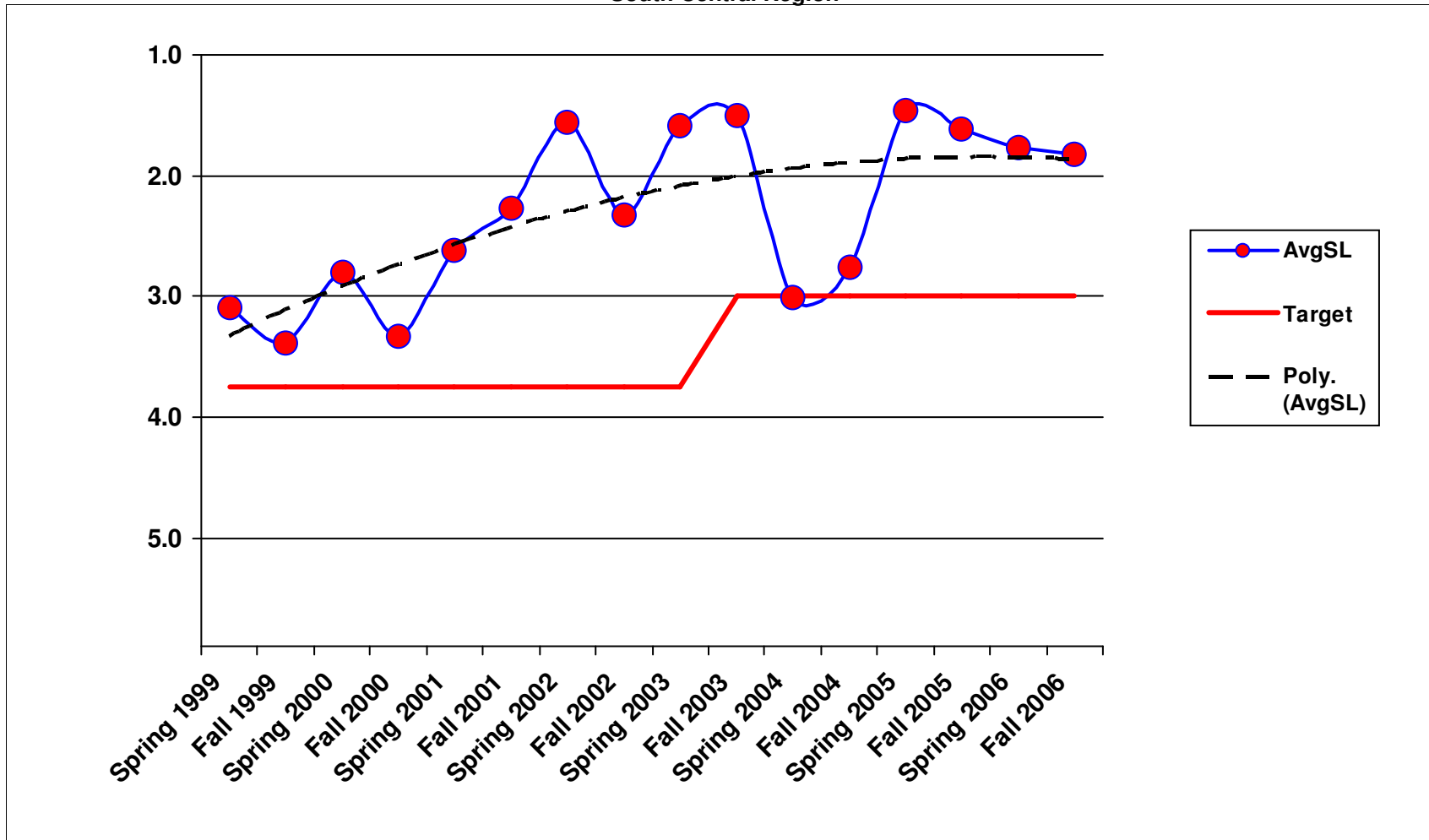
3A1 - Litter Pickup South Central Region



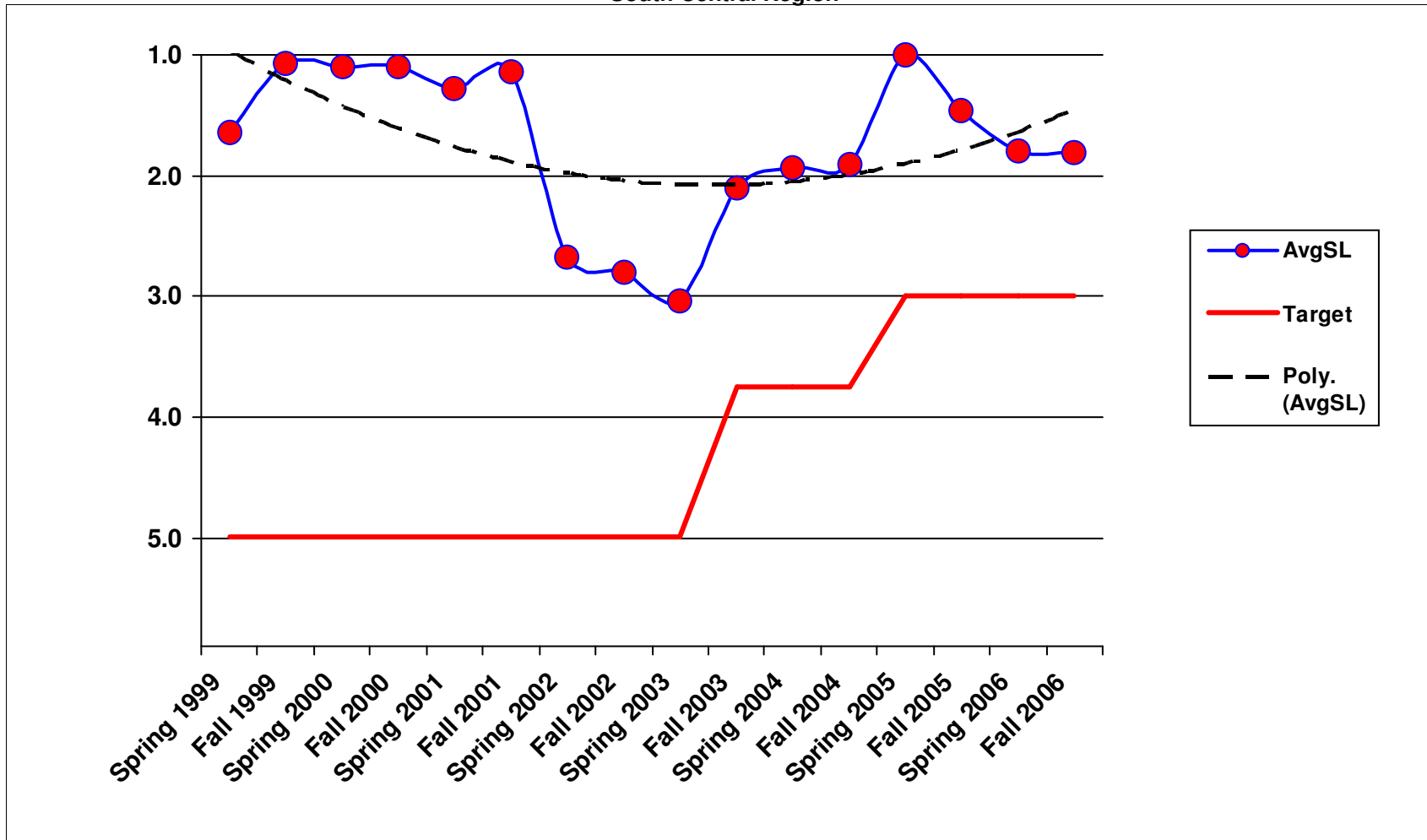
3A2 - Noxious Weed Control
South Central Region



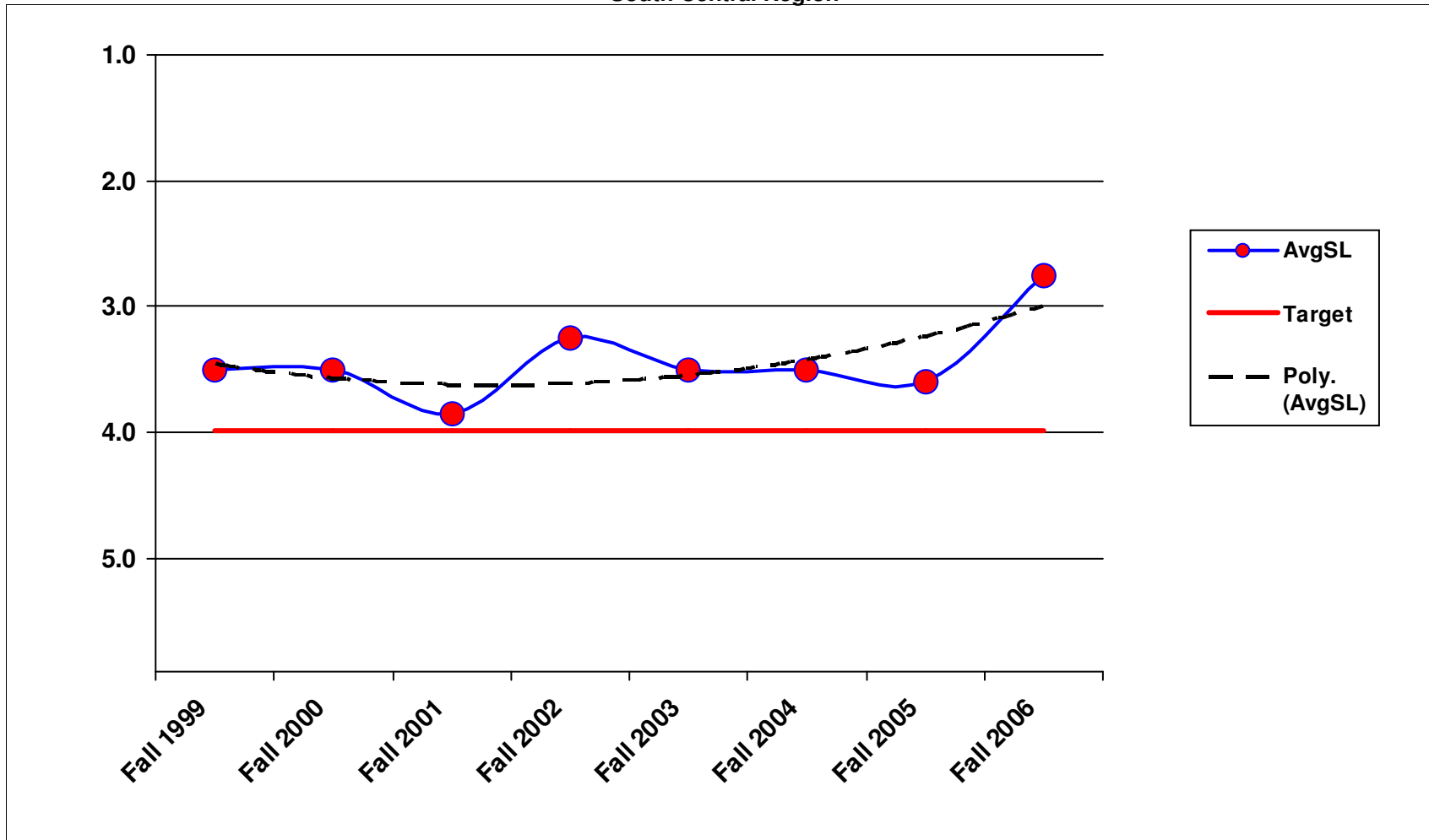
3A3 - Nuisance Vegetation Control
South Central Region



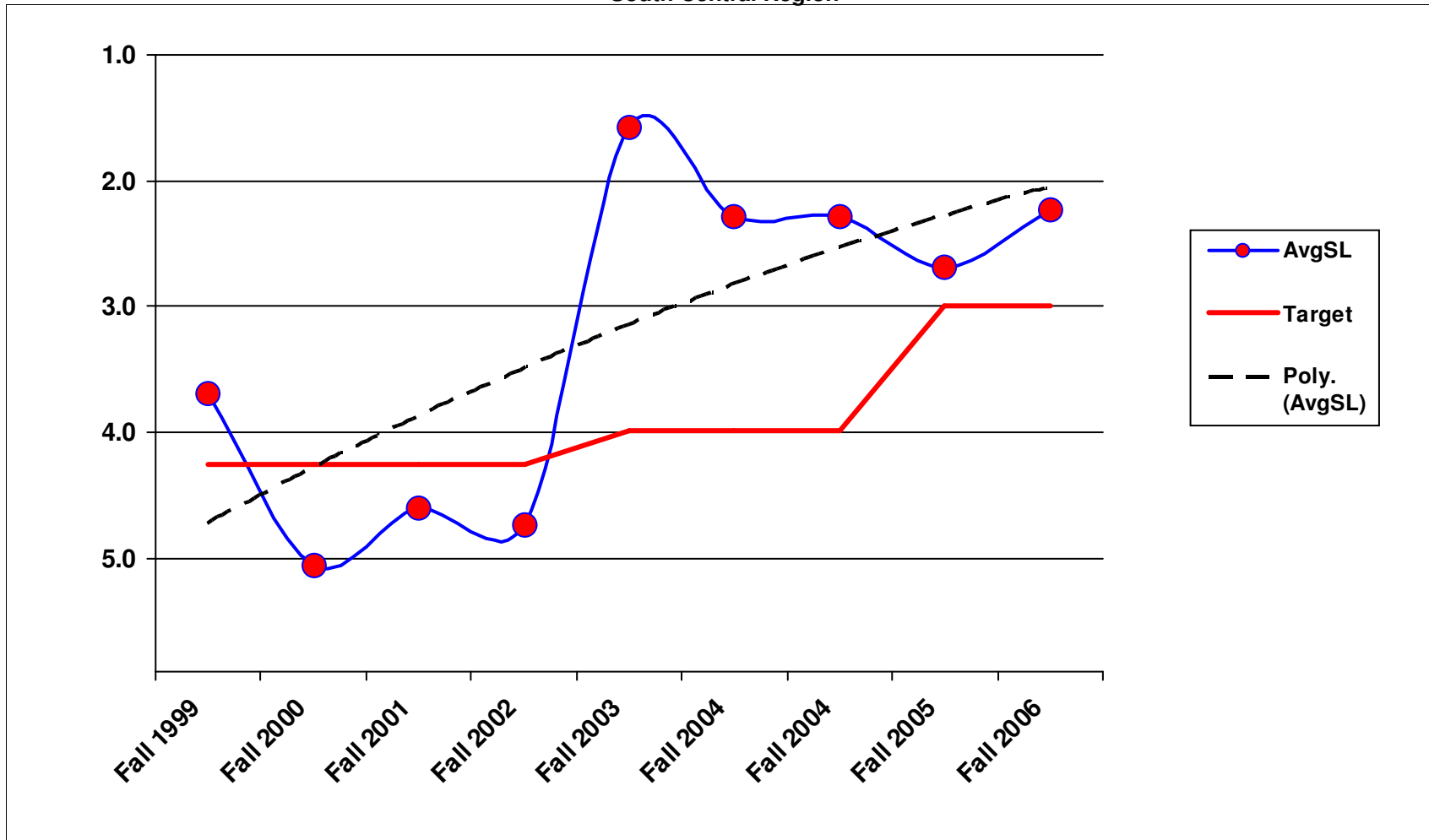
3A4 - Control of Vegetation Obstructions South Central Region



3A5 - Landscape Maintenance South Central Region

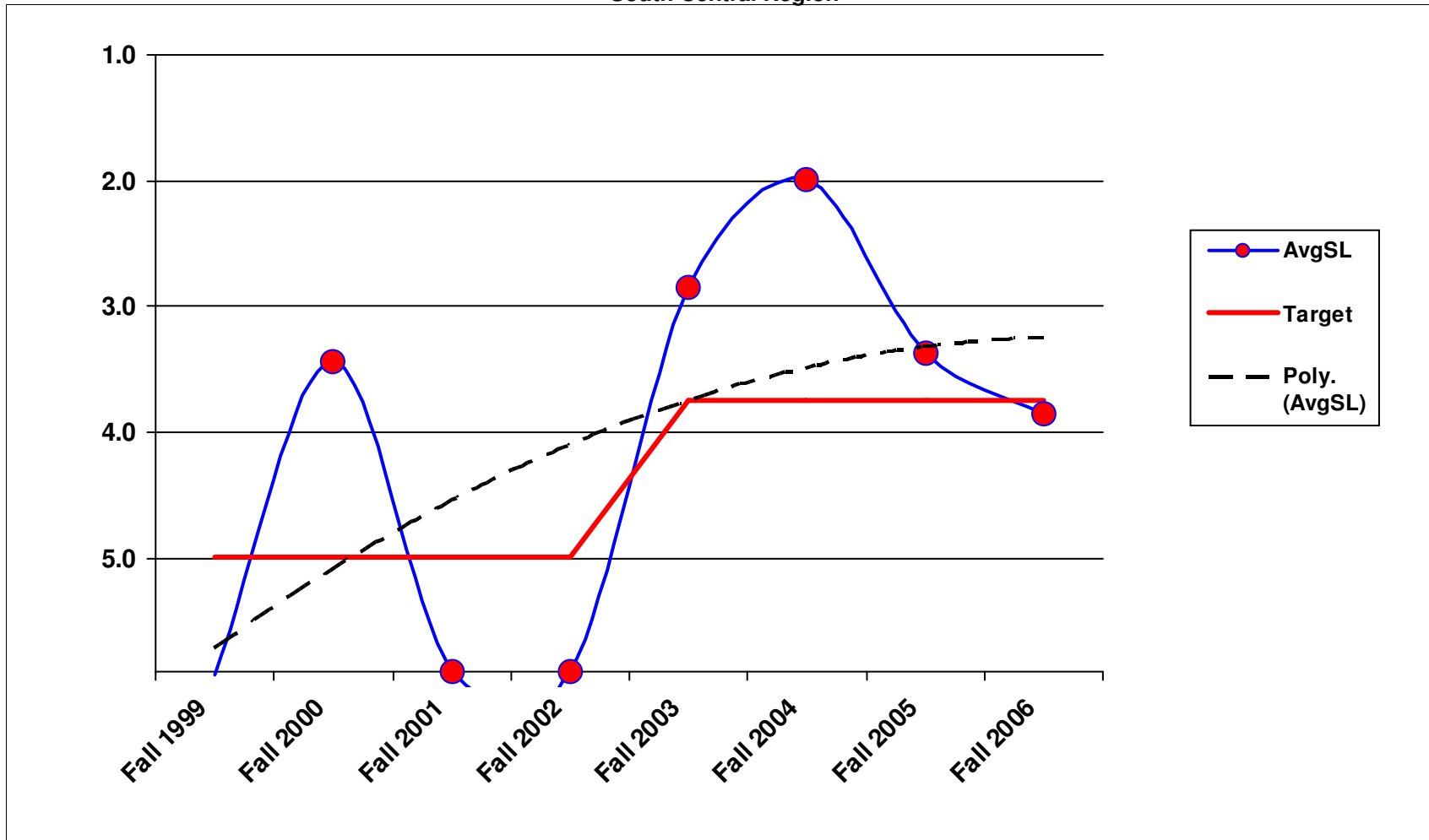


4A1 - Bridge Deck Repair South Central Region

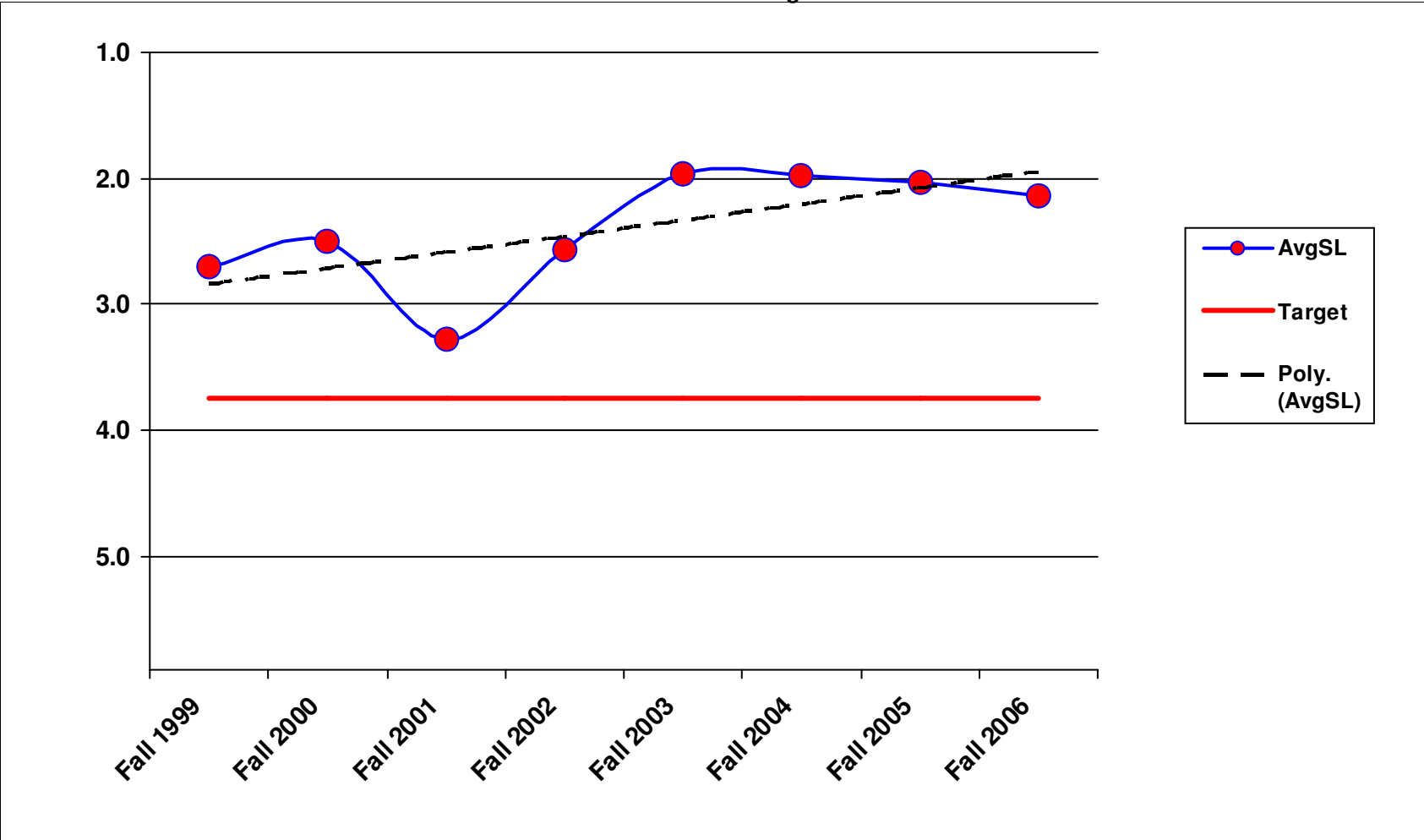


1/23/2007

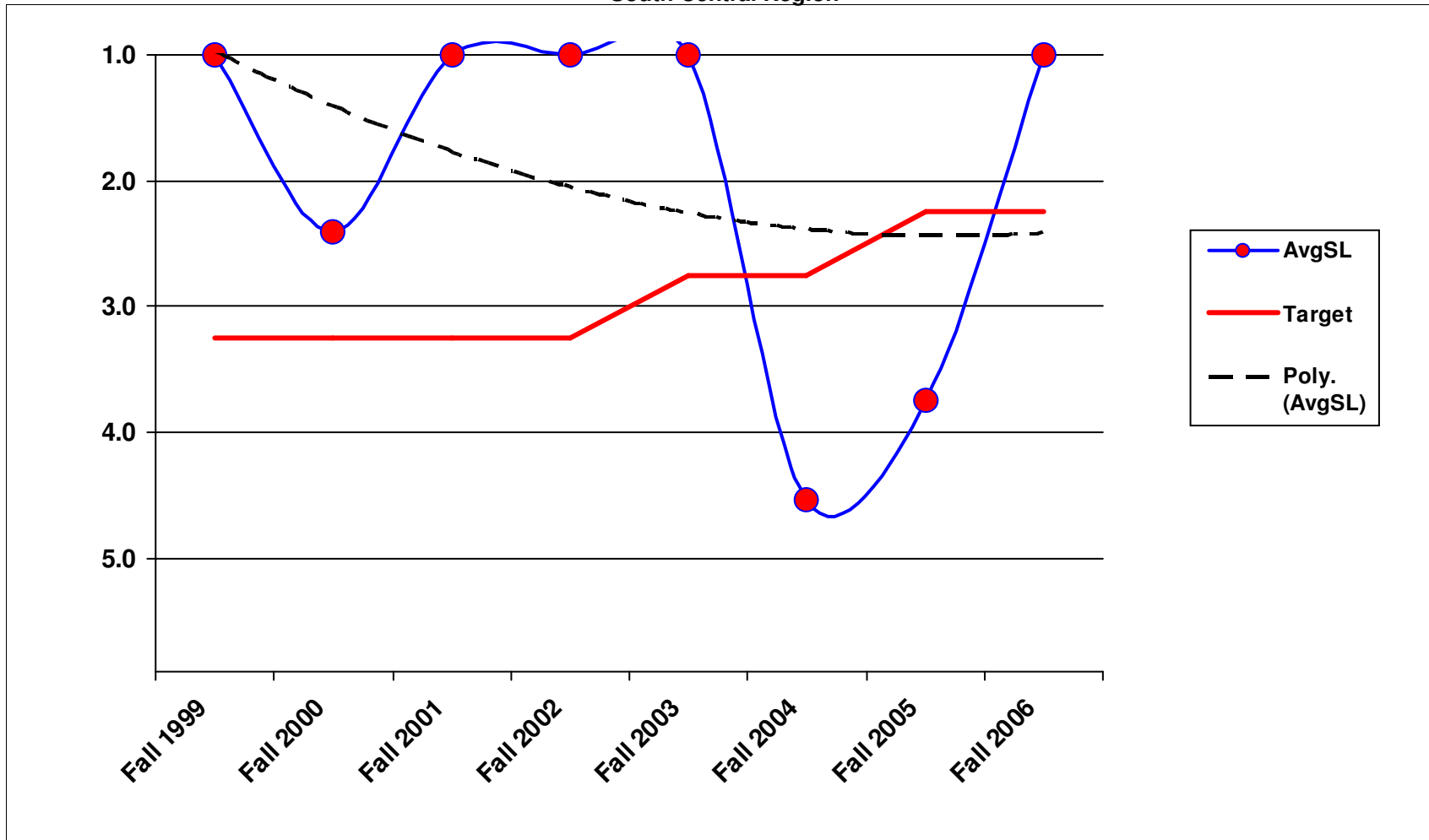
4A2 - Structural Bridge Repair
South Central Region



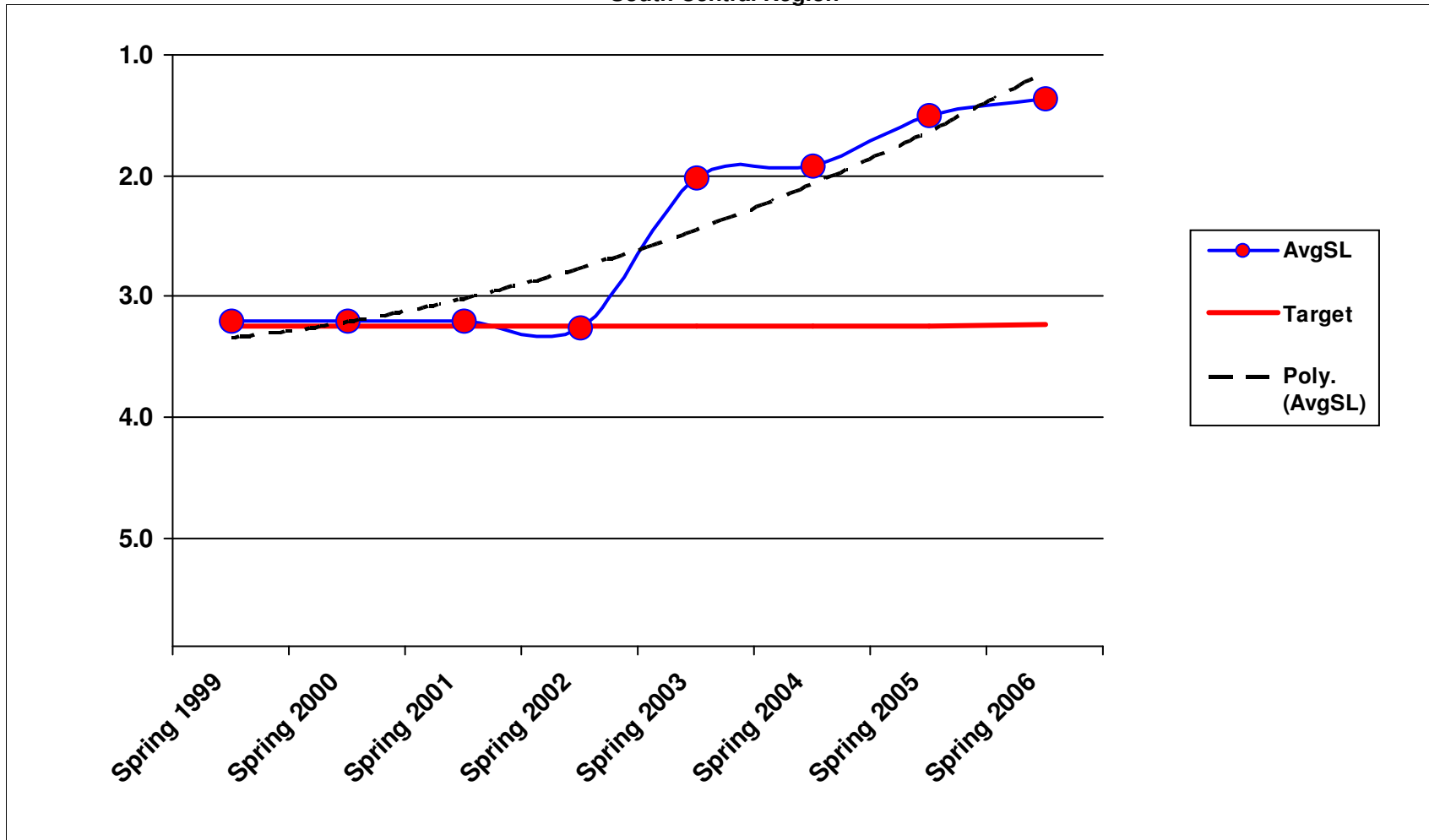
4A3 - Bridge Cleaning
South Central Region



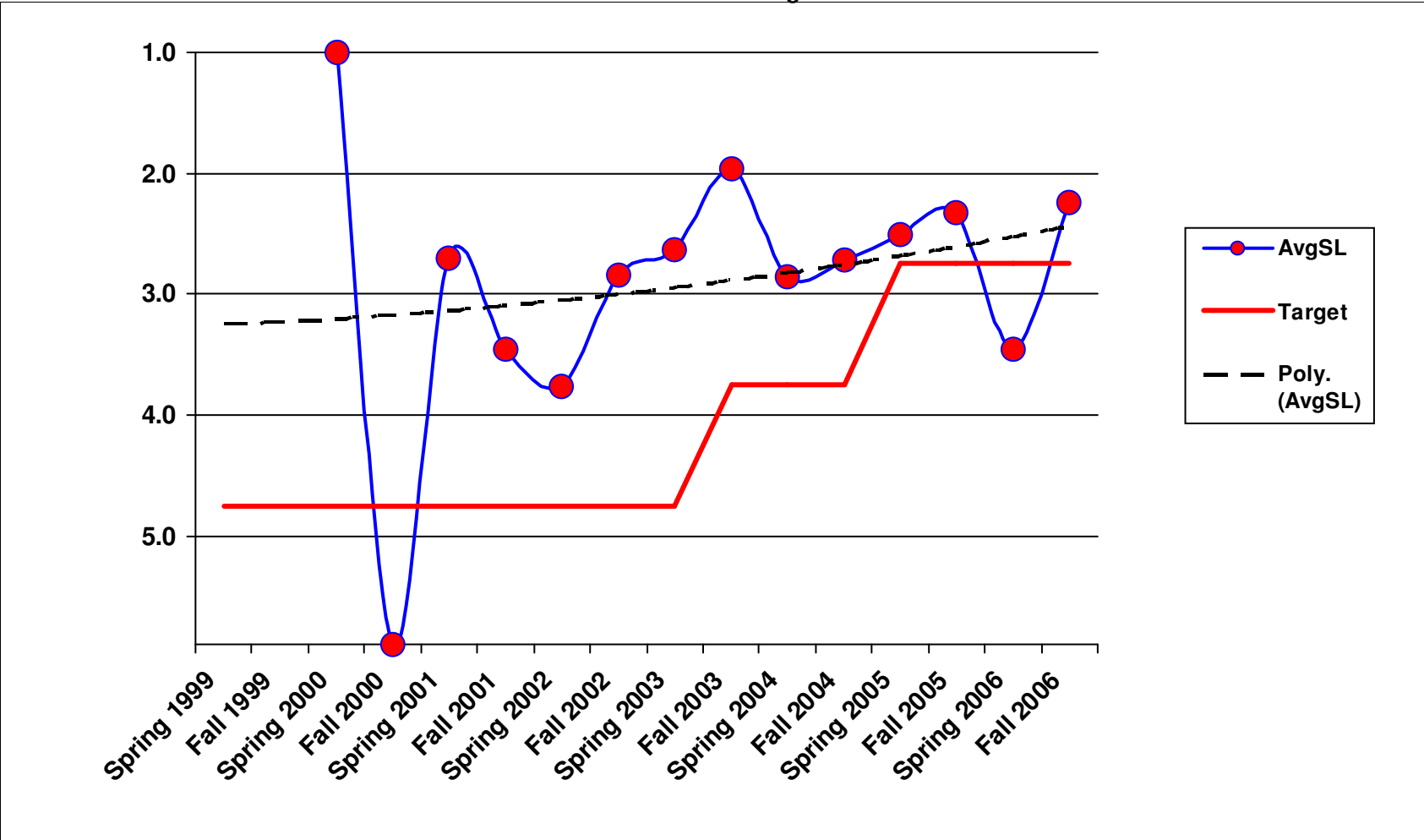
4B1 - Movable and Floating Bridge Operations South Central Region



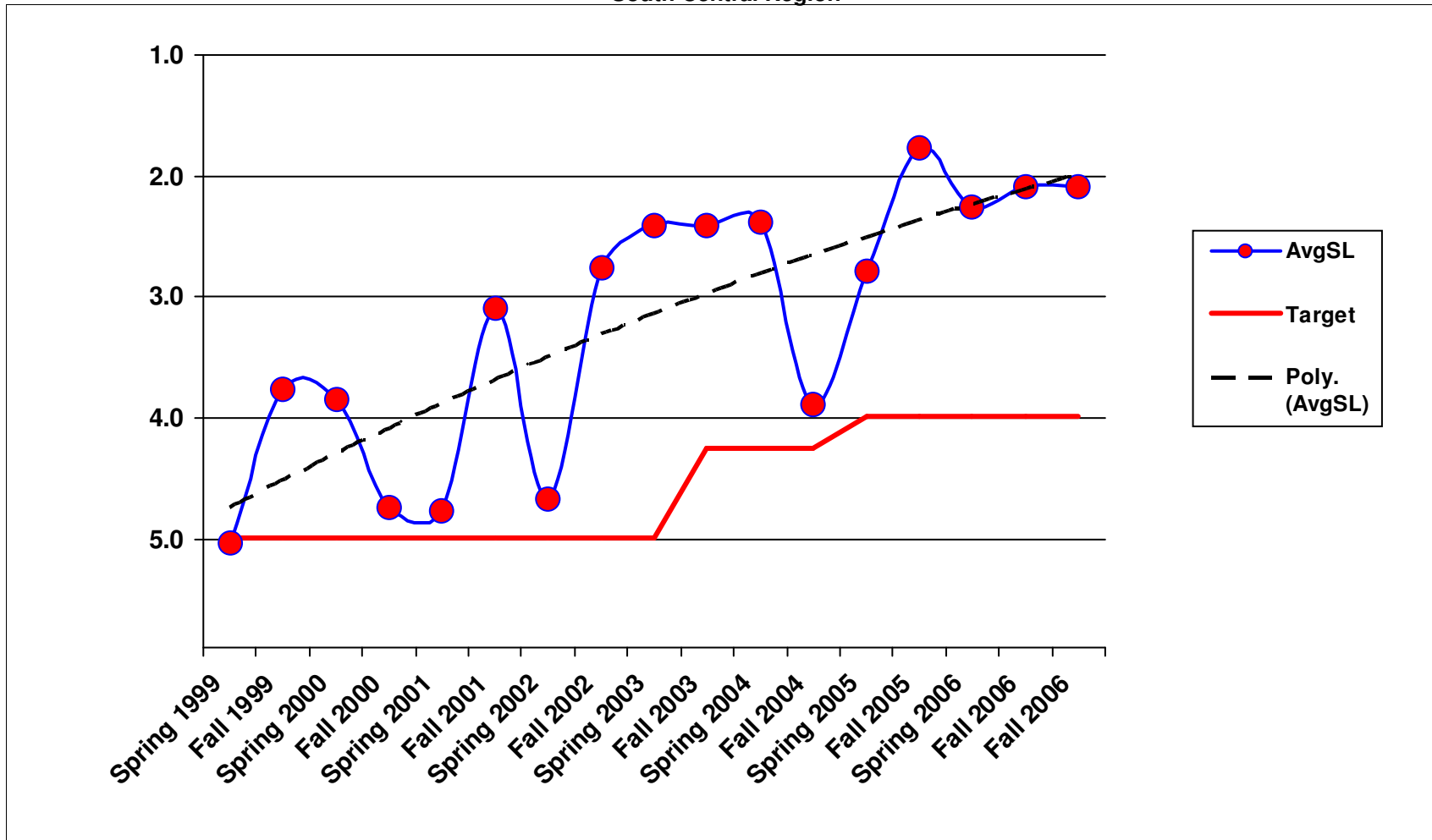
5B1 - Snow and Ice Control Operations
South Central Region



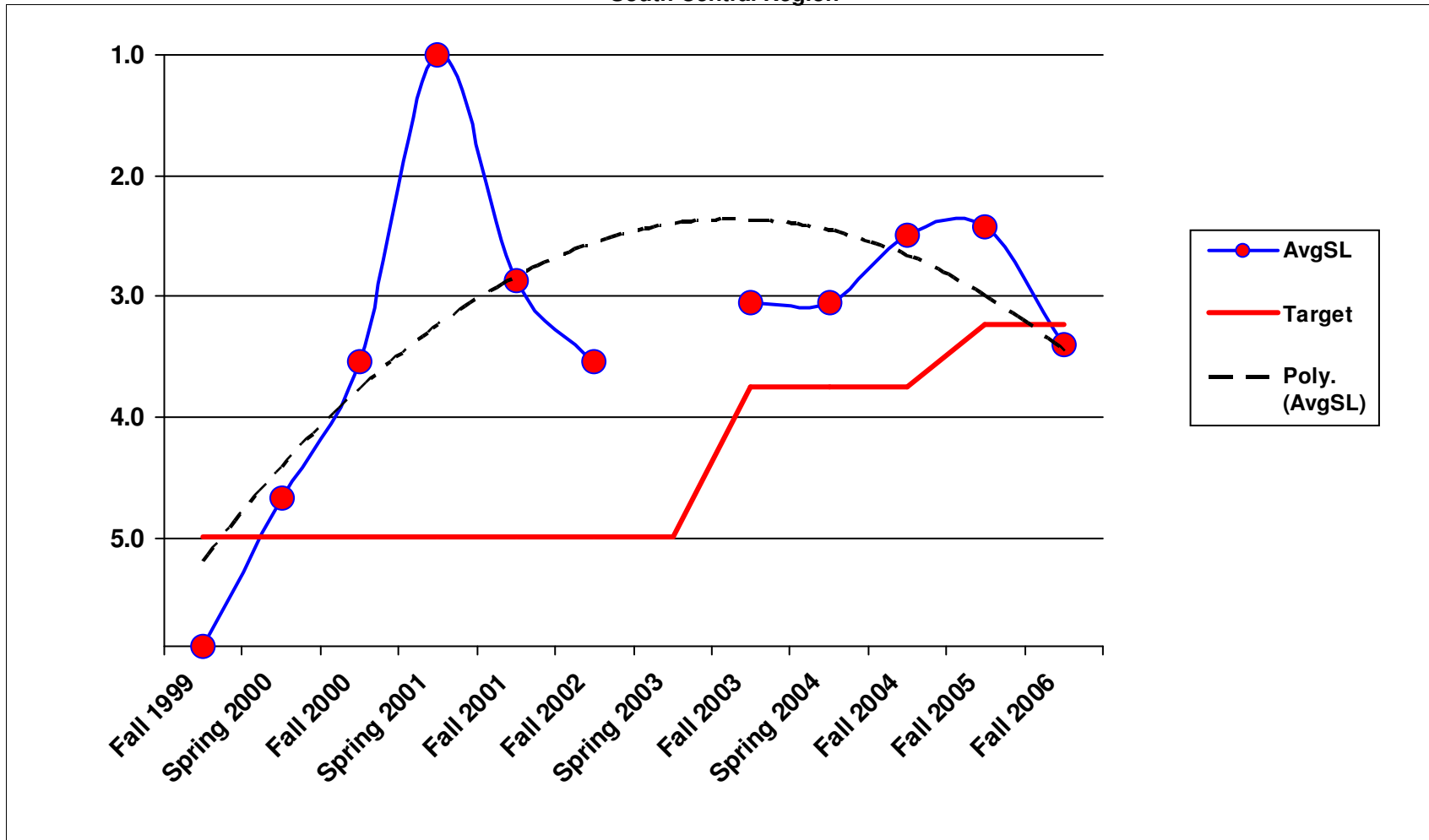
**6A2 - Raised/Depressed Pavement Marker Maintenance
South Central Region**



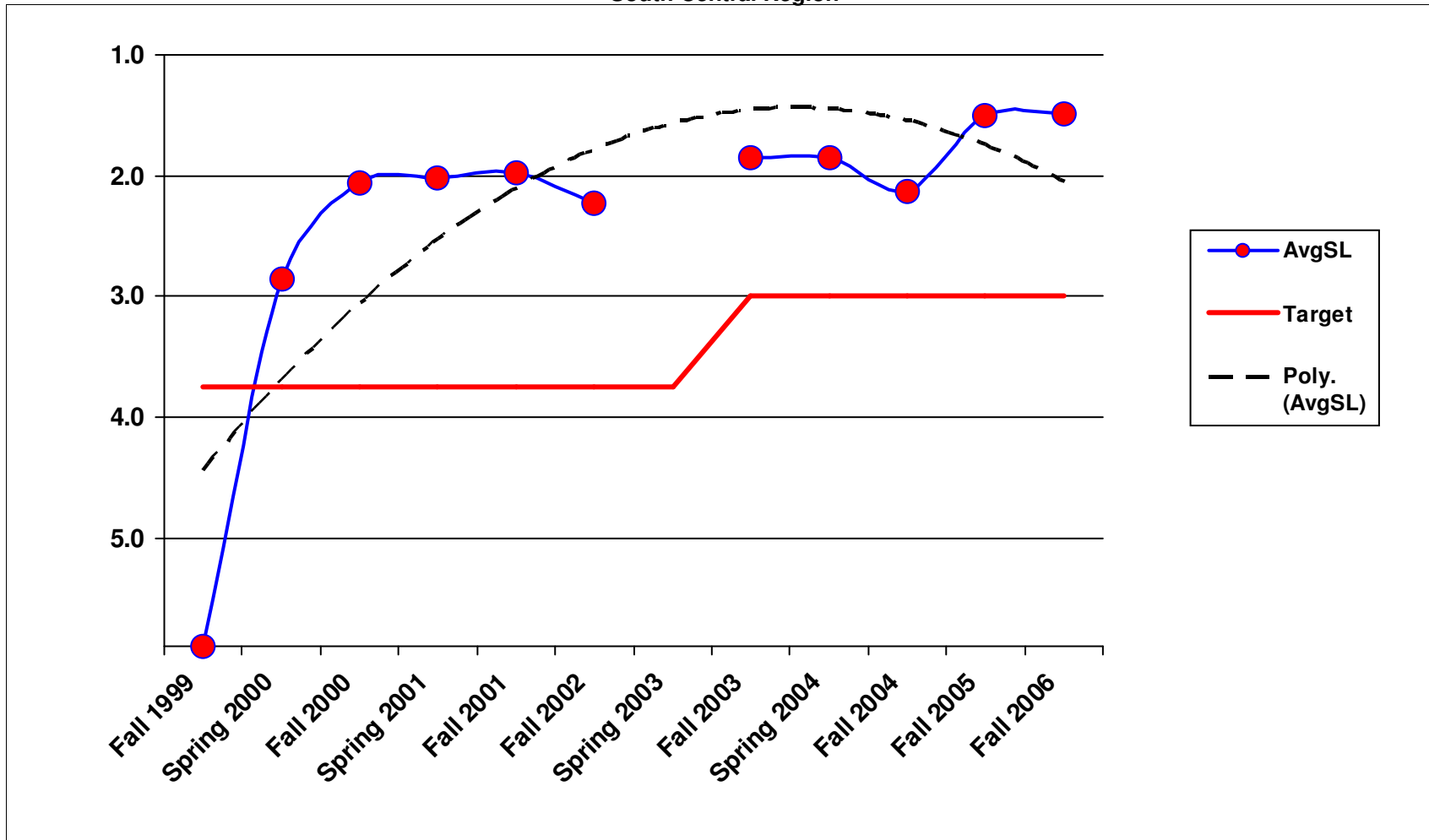
6A3 - Pavement Marking Maintenance South Central Region



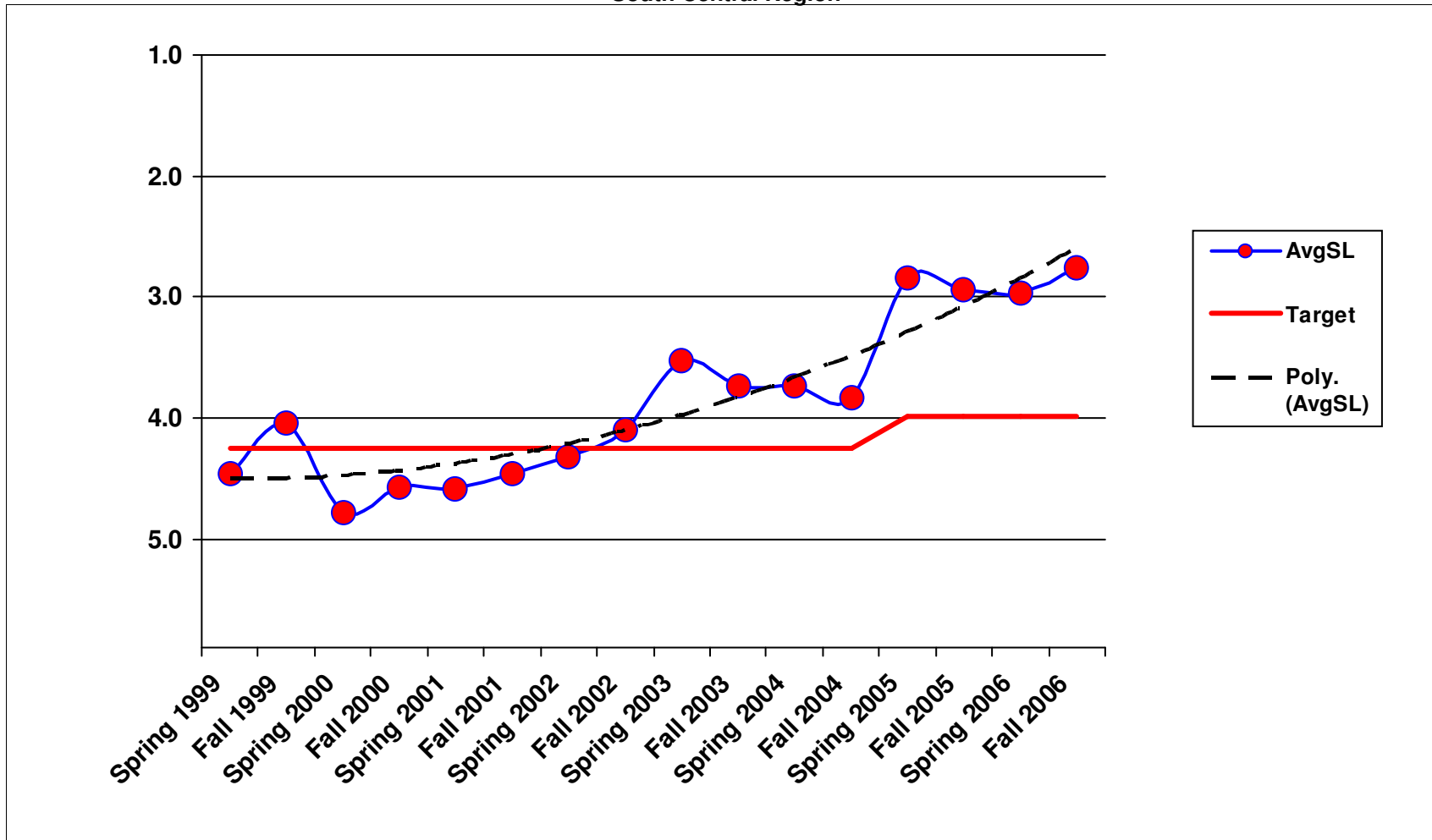
6A4 - Regulatory Sign Maintenance South Central Region



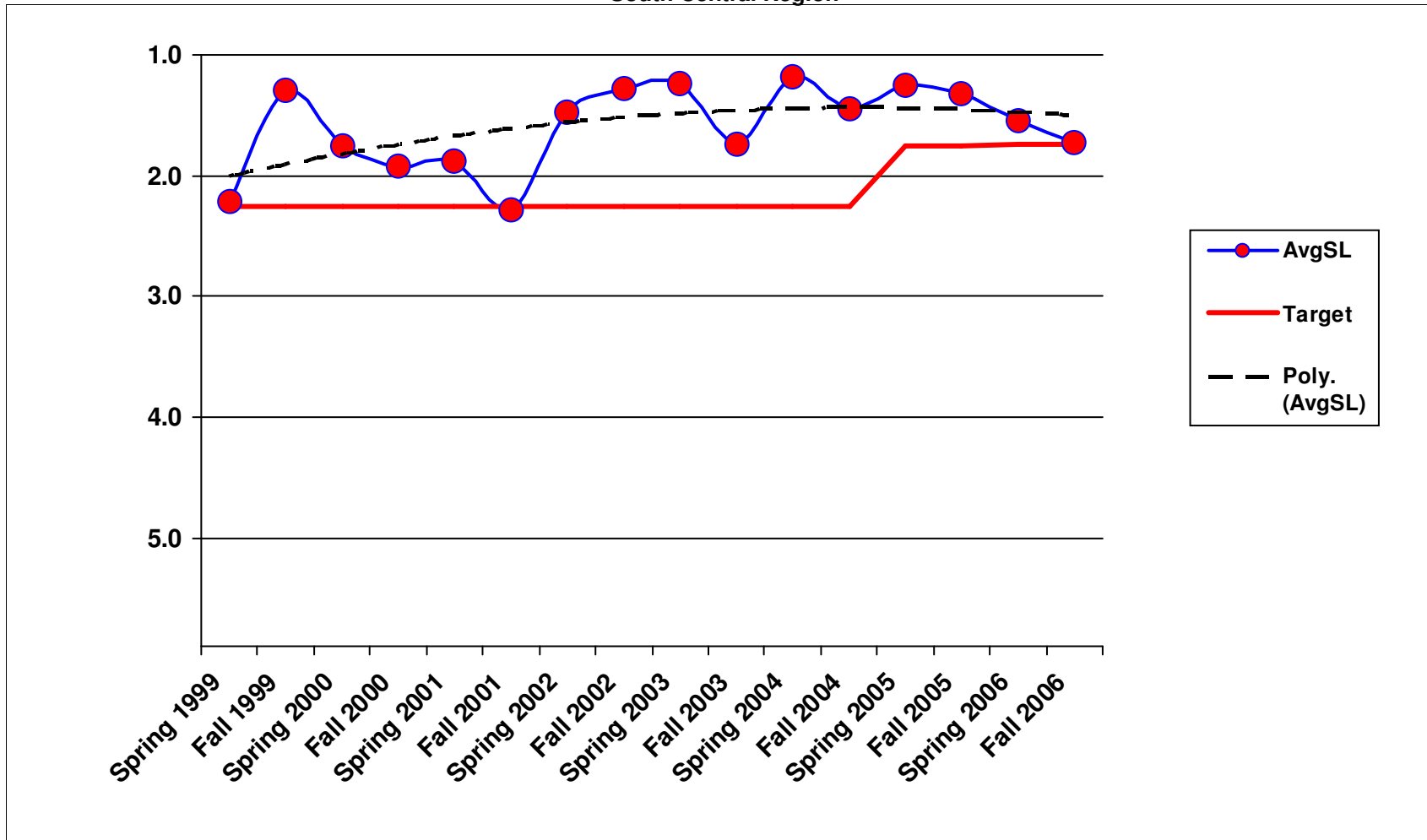
6A5 - Guide Sign Maintenance
South Central Region



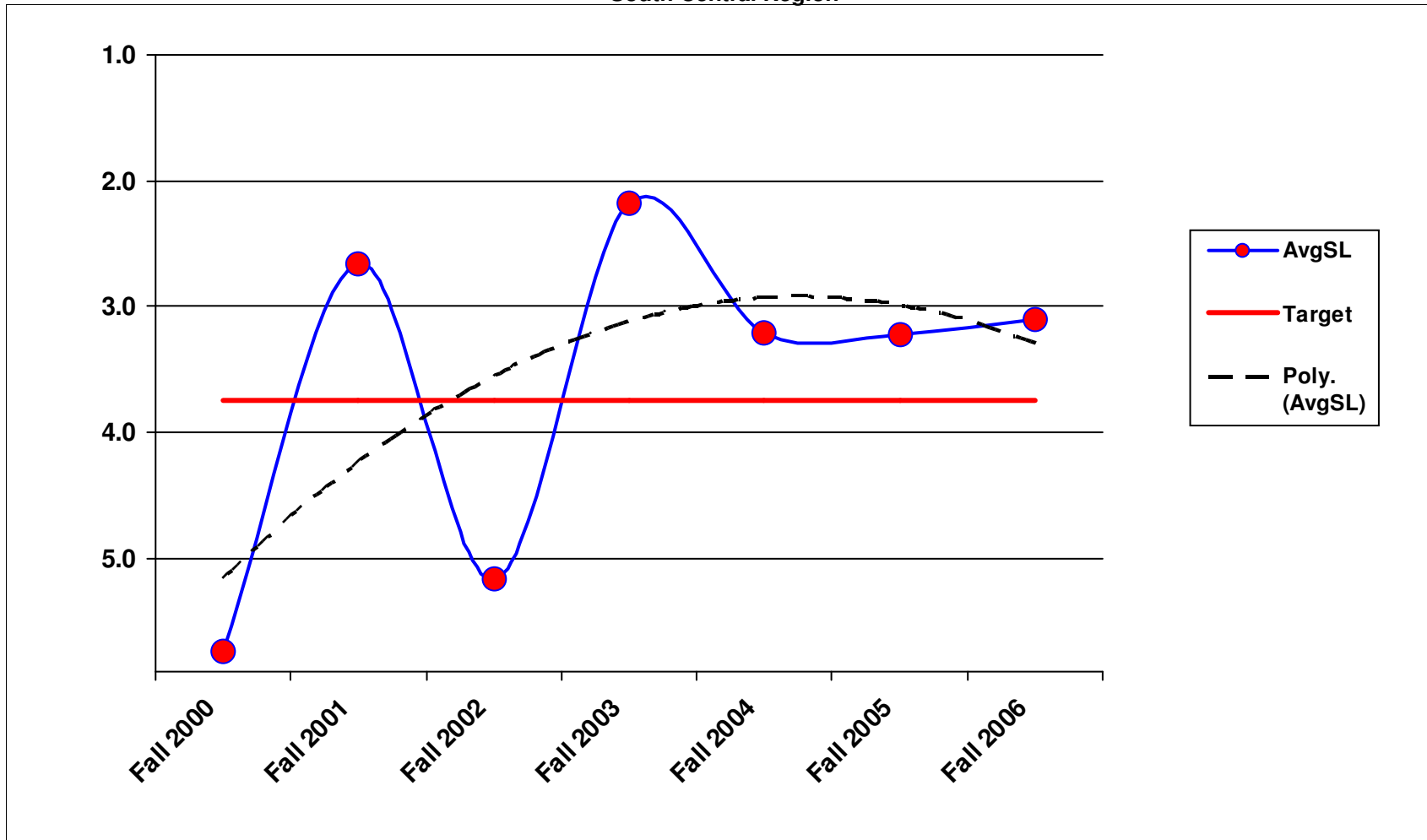
6A6 - Guidepost Maintenance
South Central Region



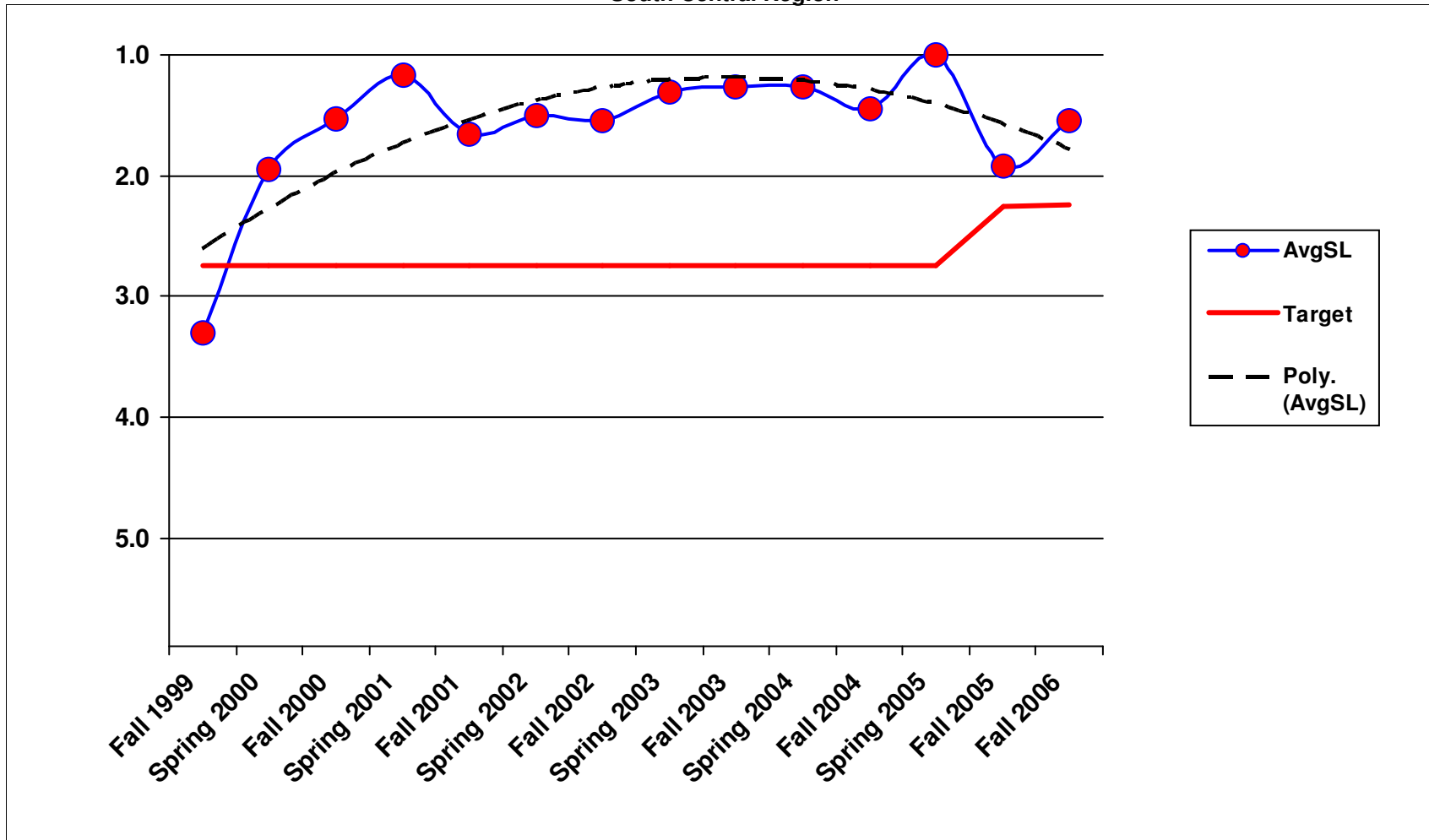
6A7 - Guardrail Maintenance South Central Region



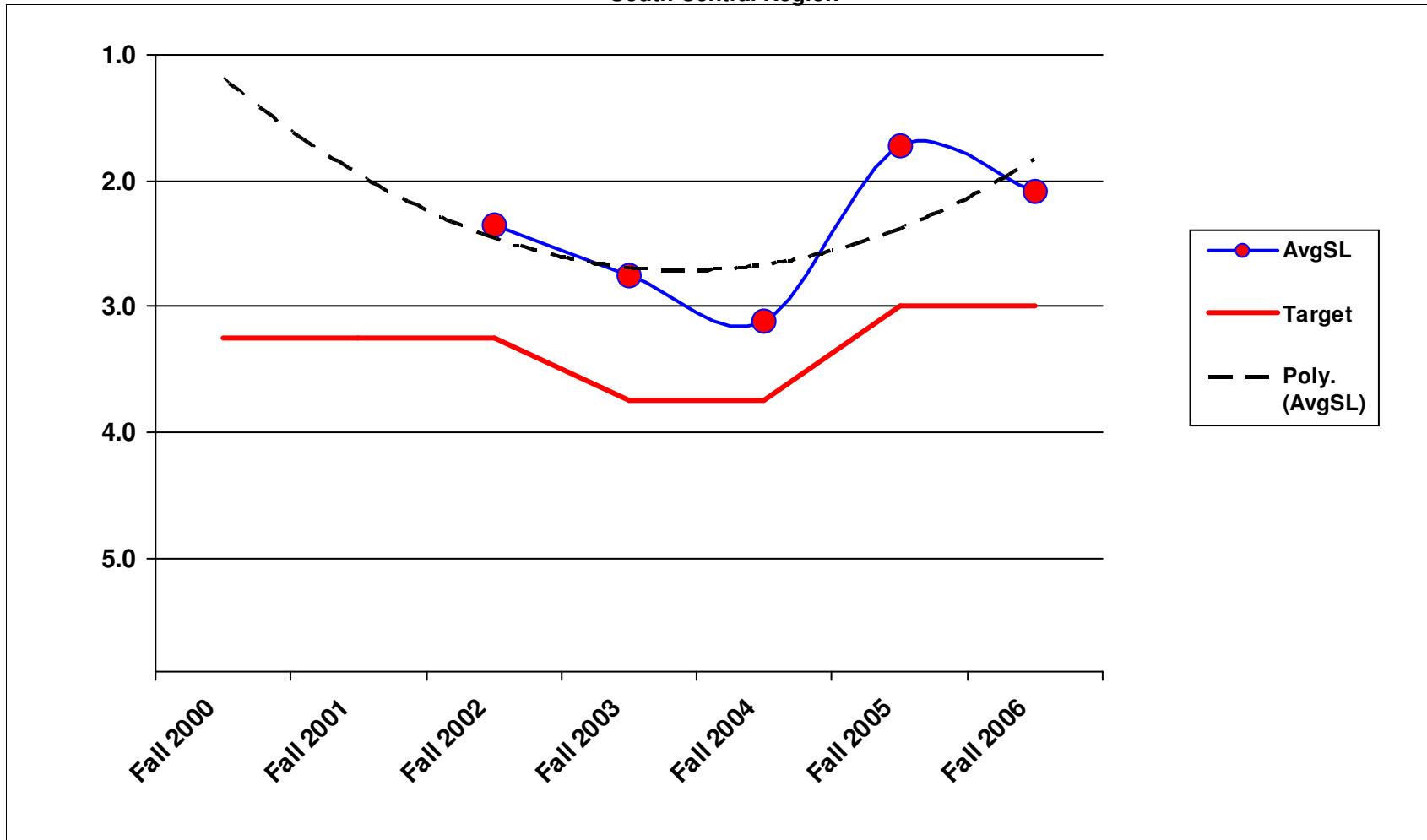
6B1 - Traffic Signal Systems South Central Region



6B2 - Highway Lighting Systems
South Central Region

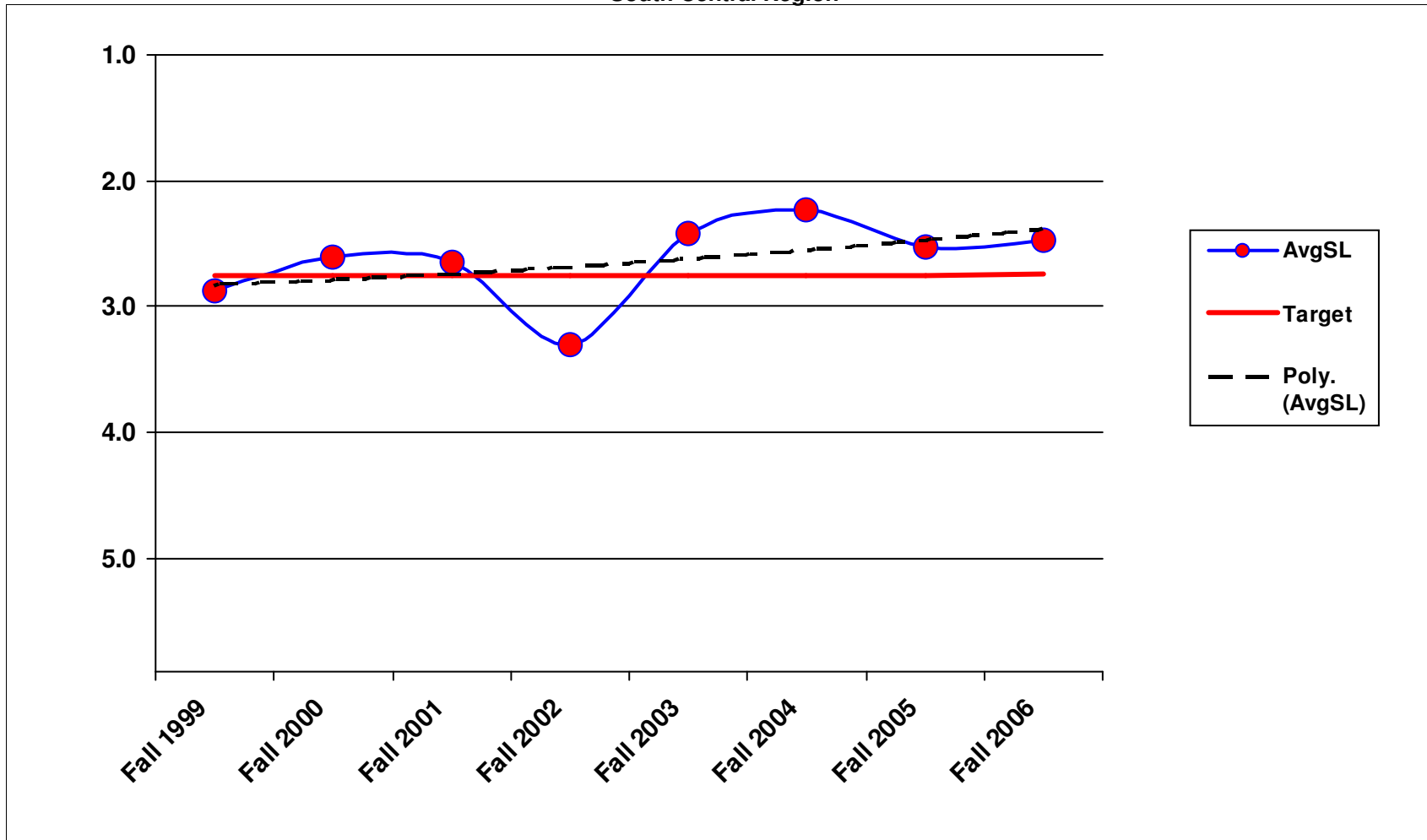


6B3 - Intelligent Transportaion Systems South Central Region



1/23/2007

7B1 - Rest Area Operations South Central Region



1/23/2007