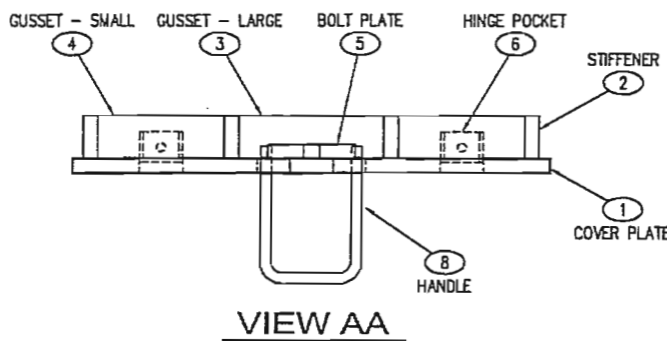


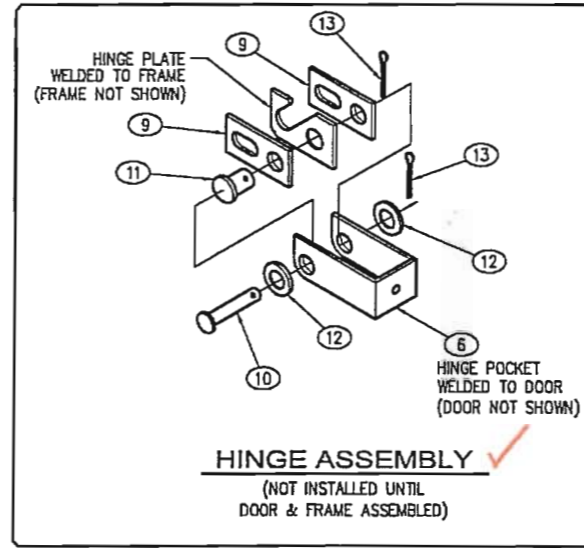
**PLAN VIEW**  
TYPE 5 DOOR - LAYOUT  
(UNDERSIDE OF DOOR)  
COMPLETE SET = (2) DOORS



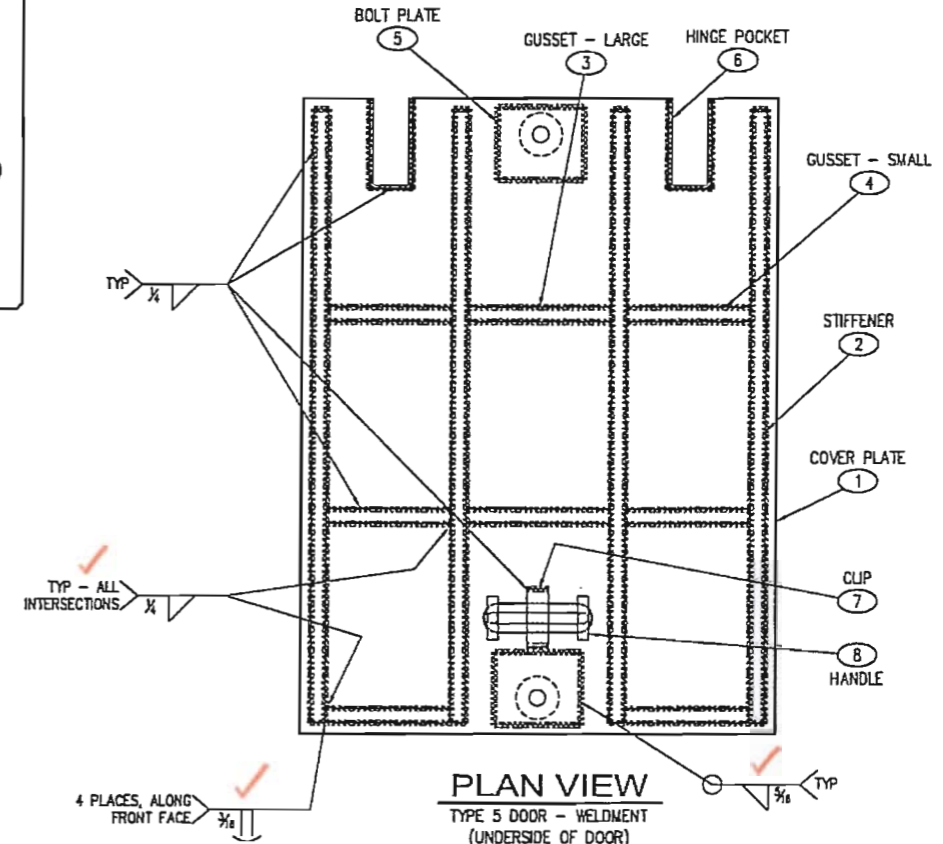
**VIEW AA**

**STRUCTURAL NOTES**

- MATERIAL: ASTM A36 STRUCTURAL STEEL STANDARDS
- ASSEMBLY: AWS D1.1 WELDING STANDARDS
- MATERIAL FOR LD, FRAME & GUSSET:  
LD: ASTM A786 DIAMOND PLATE ROLLED FROM PLATE COMPLYING WITH ASTM A572, GRADE 50 OR ASTM A588, BOTH WITH MIN. CVN TOUGHNESS OF 20 ft-lb AT 40° F  
FRAME & STIFFENER PLATES: ASTM A572, GRADE 50 OR ASTM A588, BOTH WITH MIN. CVN TOUGHNESS OF 20 ft-lb AT 40° F  
HANDLE: ASTM A36 STEEL  
ANCHORS (STUDS): SECTION 9-06.15  
BOLTS, NUTS, WASHERS: ASTM F593 OR A193, TYPE 304 OR 316



**HINGE ASSEMBLY**  
(NOT INSTALLED UNTIL DOOR & FRAME ASSEMBLED)



**PLAN VIEW**  
TYPE 5 DOOR - WELDMENT  
(UNDERSIDE OF DOOR)  
COMPLETE SET = (2) DOORS

**APPROVED**  
Washington State  
Department of Transportation  
HQ Traffic Operations Office  
DATE August 8, 2007 TAT

**SHOP NOTE:**  
GRIND ALL SHARP EDGES

**TOLERANCE NOTE:**  
OVERALL DIMENSIONS HAVE A MAXIMUM ALLOWABLE TOLERANCE OF ± 1/8"

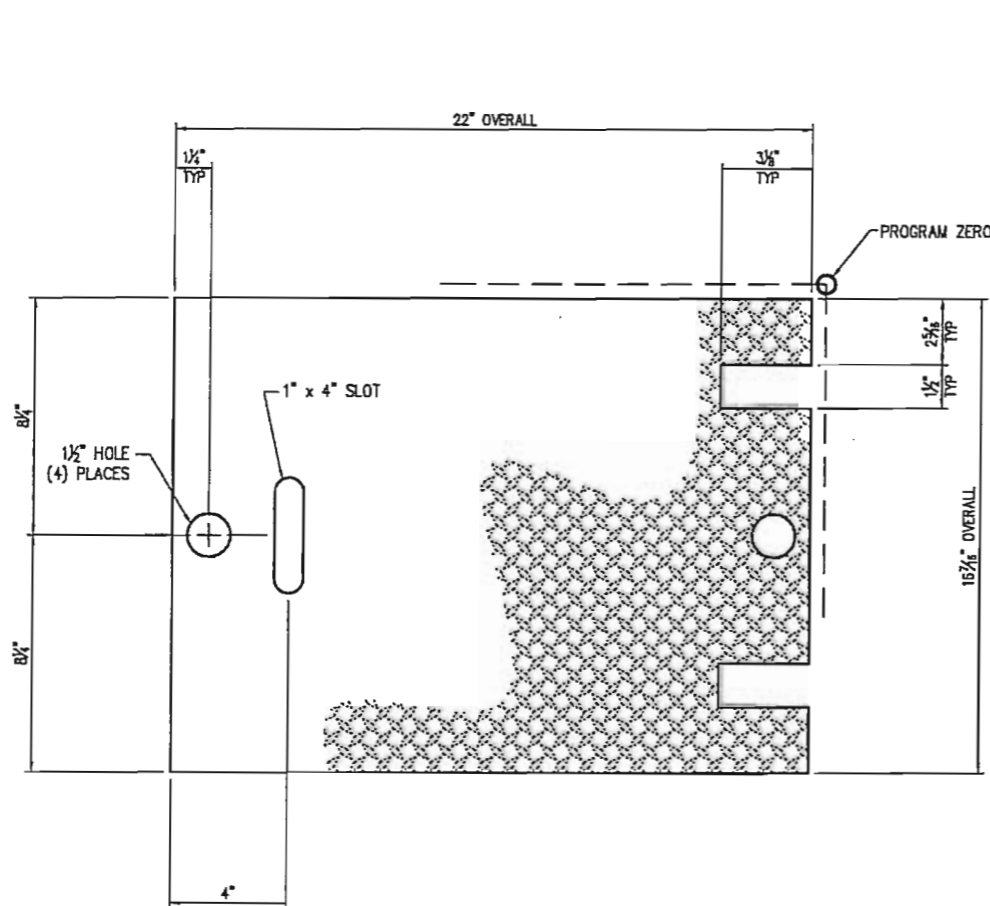
**NOTES**

- COVER TO BE PAINTED AFTER FABRICATION
- ALL WELDS TO BE 3/16" FILLET WELDS UNLESS OTHERWISE NOTED
- (2) DOORS MAKE (1) COMPLETE SET
- ASSEMBLY PARTS PROVIDED BY WILSONVILLE (NOT SHOWN):  
9 SS HINGE SIDE PLATE  
10 SS HINGE PIN  
11 SS HINGE PIN  
12 SS WASHER  
13 SS COTTER PIN  
14 SS RETAINING BOLT

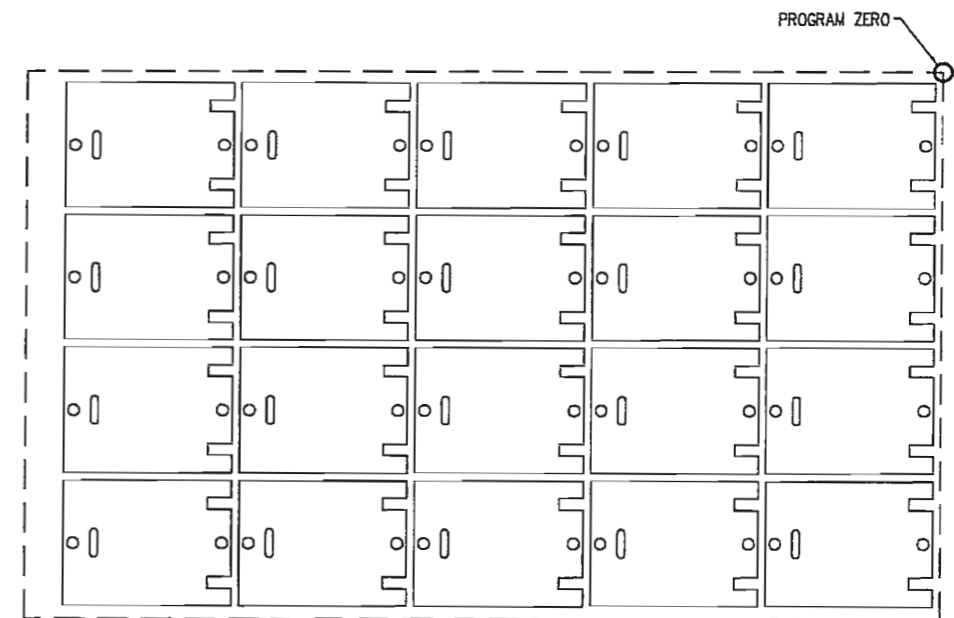
PART LIST (2 DOORS/1 SET)					B.O.M.	
PART	PART NAME	DESCRIPTION	CUT SIZE	QTY.	UV No.	TOTAL
1	COVER PLATE	DIAMOND PLATE, 72" x 120" x 1/2"	(SEE SHT 2)	2	5540085	0.2 sht
2	STIFFENER	FLATBAR, 1/2" x 1 5/8"	21 1/4"	4		39.14 lbs
3	GUSSET - LARGE	FLATBAR, 1/2" x 1 5/8"	5"	4		4.61 lbs
4	GUSSET - SHORT	FLATBAR, 1/2" x 1 5/8"	4 3/8"	12		12.09 lbs
5	BOLT PLATE		(SEE SHT 3)	4		4 ea
6	HINGE POCKET	11 GA. FLATBAR		4	5310040	4 ea
7	CLIP	FLATBAR, 3/16" x 3/4"	2"	2	5520027	0.16 lbs
8	HANDLE	ROD, 1/2"	(SEE SH3)	2		2 ea
9	SS HINGE SIDE PLATE	PLATE, 2-1/2" x 1-1/4"		8		8 ea
10	SS CLEVIS HINGE PIN	PIN, 3/8" x 2 1/4"		4		4 ea
11	SS CLEVIS HINGE PIN	PIN, 1/2" x 1"		4		4 ea
12	SS WASHER	WASHER, 9/16"		8		8 ea
13	SS COTTER PIN	COTTER PIN, 2"		8		8 ea
14	SS RETAINING BOLT	1/2" x 1-1/2"		4		4 ea

ITEM	QUANTITY	PART	DESCRIPTION	QUAN.	SIZE	TOTAL WT. LBS.
<b>SALES INFORMATION</b>						
CUSTOMER STANDARD PRODUCT		J11 TYPE 5 COVER - LAYOUT & WELDMENT				
SALES		WSDOT				
DRAWN JG		SCALE 3"=1'-0"		APPROVED		REV. H
CHECKED		DATE 6/21/04		SHEET 1 OF 5		DWG NO. CC-0405
<p>THIS DOCUMENT IS THE PROPERTY OF OLDCASTLE PRECAST, INC. IT IS SUBMITTED FOR REFERENCE PURPOSES ONLY AND SHALL NOT BE USED IN ANY WAY RELATIVE TO THE INTERESTS OF SAID COMPANY. COPYRIGHT © 2004 Oldcastle Precast, Inc. All Rights Reserved.</p> <p><b>UTILITY VAULT™</b> PO Box 588 Auburn, WA 98071-0588 Ph: 800-882-1538 Fax: 253-735-4101</p> <p>a division of <b>Oldcastle Precast, Inc.</b></p>						

LTR.	REVISION	DATE	BY
A	CHANGED PLATE SIZE TO 72" x 120"	11/4/04	JG
B	ADD SHOP NOTE	2/15/05	JG
D	NO CHANGES	1/22/07	TMB
E	NO CHANGES	2/5/07	TMB
F	NO CHANGES	3/2/07	TMB
G	NO CHANGES	4/17/07	TMB
H	NO CHANGES	6/4/07	TMB



**PLAN VIEW**  
TYPE 5 DOOR - CUT LAYOUT



**DETAIL**  
MATERIAL: 1/2" DIAMOND PLATE  
72" x 120" SHEET

**NOTES:**

1. MATERIAL: 1/2" DIAMOND PLATE (SEE STRUCTURAL NOTE 3, SHEET 1 OF 5)
2. LAYER CUTA IS FOR SINGLE CUT PROGRAM (CC-0405A)
3. LAYER CUTB IS FOR MULTIPLE CUT PROGRAM (CC-0405B) - SEE DETAIL

**SHOP NOTE:**

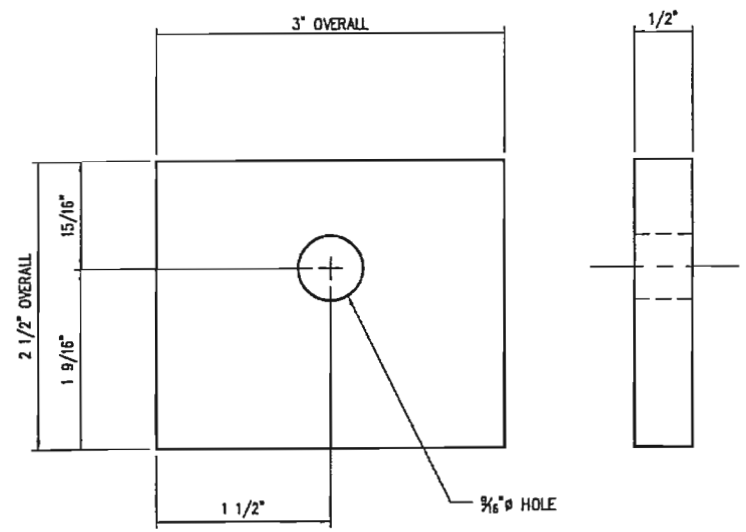
CUT WITH DIAMOND PLATE FACE DOWN.

ADJUST KERF OFFSET WHEN CUTTING TO APPROX. .08 TO MAINTAIN OVERALL DIMENSIONS. CUT 1 TEST DOOR TO ENSURE OFFSET IS CORRECT.

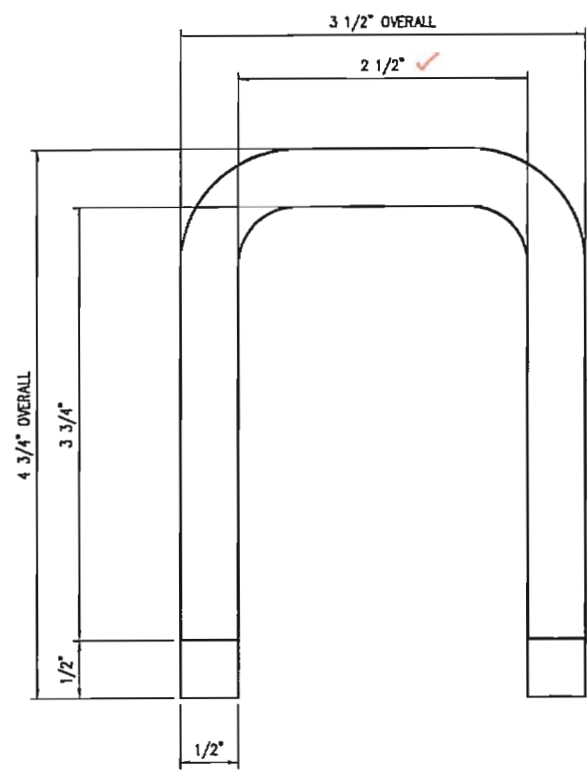
**APPROVED**  
Washington State  
Department of Transportation  
HQ Traffic Operations Office  
DATE August 8, 2007 TAT

ITEM	QUANTITY	PART	DESCRIPTION	QUAN.	SIZE	TOTAL WT. LBS.
<b>BILL OF MATERIAL</b>						
SALES INFORMATION		J11 TYPE 5 COVER - PART CUT				
CUSTOMER STANDARD PRODUCT		WSDOT				
SALES	S.O. #	SCALE 3"=1'-0"	APPROVED	DWG NO.	REV.	
DRAWN JG	LINE #	SHEET 2 OF 5	WEIGHT	CC-0405	H	
CHECKED	DATE 6/21/04					
<small>THIS DOCUMENT IS THE PROPERTY OF OLDCASTLE PRECAST, INC. IT IS LOANED FOR REFERENCE PURPOSES ONLY AND SHALL NOT BE USED IN ANY WAY HARMFUL TO THE INTERESTS OF SAID COMPANY. COPYRIGHT © 2004 Oldcastle Precast, Inc. All Rights Reserved.</small>						
<b>UTILITY VAULT™</b> <small>PO Box 588 Auburn, WA 98071-0588          Pte: 800-852-1538 Fax: 253-735-4201</small>			<small>a division of</small> <b>Oldcastle Precast, Inc.</b> <small>Auburn, WA / Merced, CA / Chandler, AZ / Pleasanton, CA / San Diego, CA / Stockton, CA</small>			

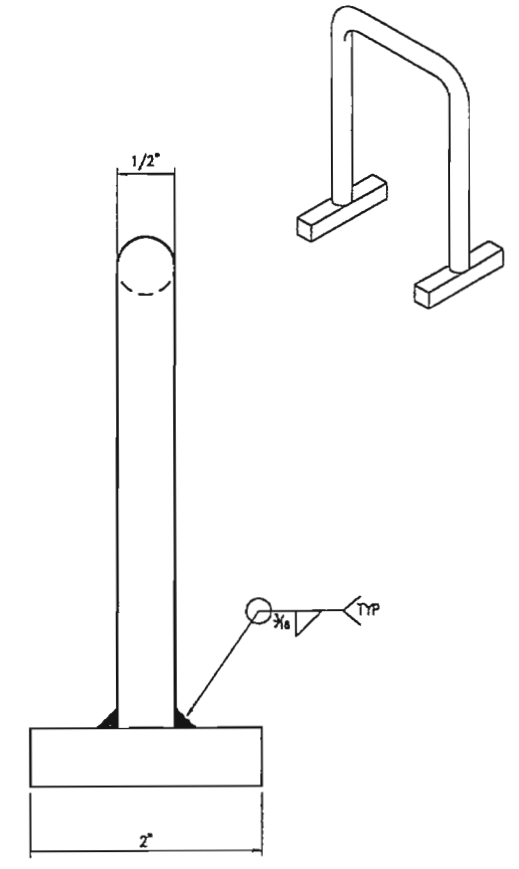
LTR.	REVISION	DATE	BY
A	REVISED BOM	10/4/04	JG
B	MODIFIED BOLT PLATE FOR EASE OF WELDING	1/6/05	JG
C	REVISED BOM	4/6/05	JG
D	NO CHANGES	1/22/07	TMB
E	NO CHANGES	2/5/07	TMB
F	CHANGED HANDLE TO 1/2" ROD	3/2/07	TMB
G	NO CHANGES	4/17/07	TMB
H	NO CHANGES	6/4/07	TMB



**PLAN VIEW**  
BOLT PLATE



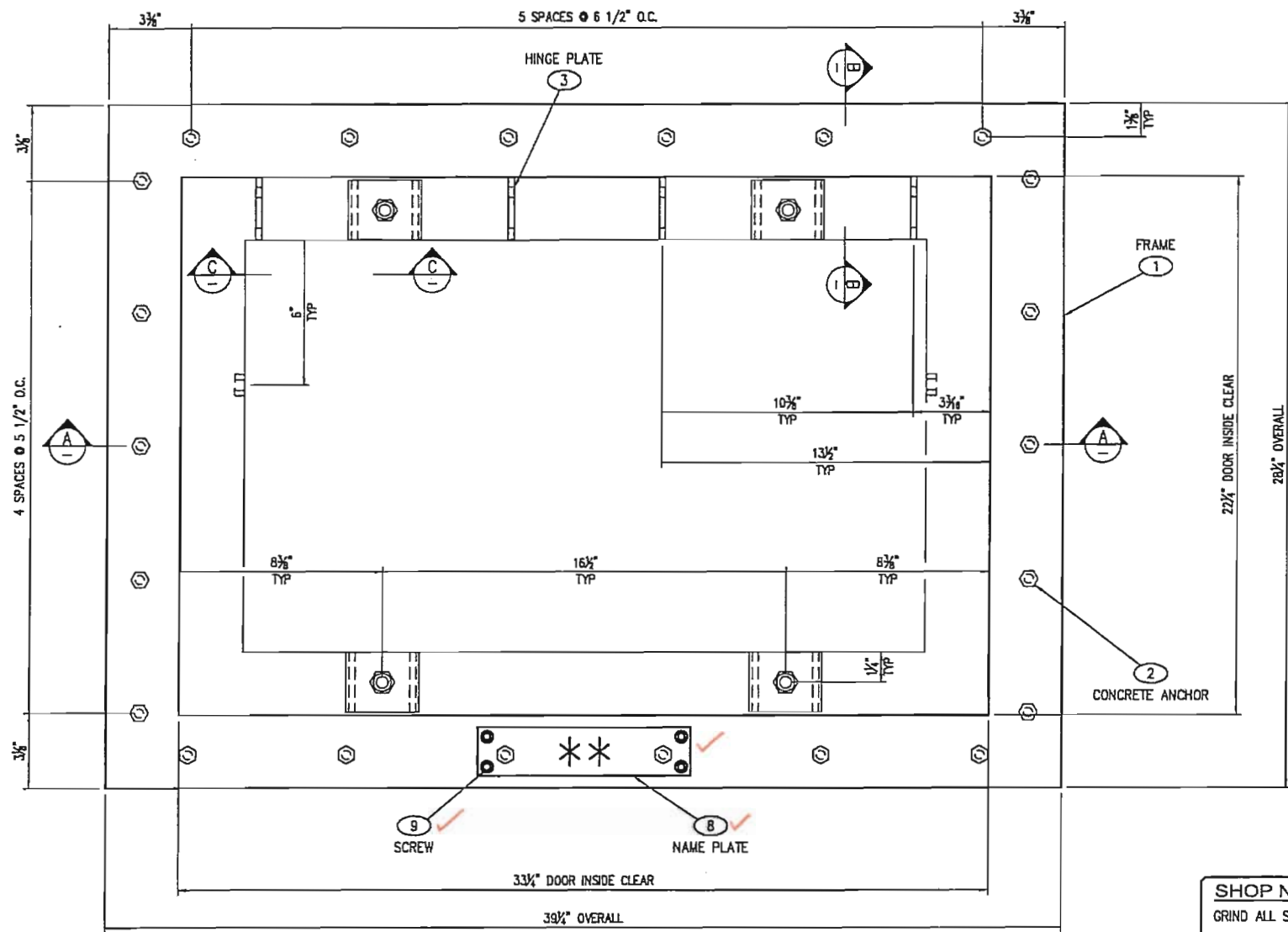
**PLAN VIEW**  
HANDLE



PART LIST					B.O.M.	
PART	PART NAME	DESCRIPTION	CUT SIZE	QTY.	UV No.	TOTAL
1	BOLT PLATE	FLATBAR, 1/2" x 3" ✓	2 1/2"	4		4.25 lbs
2	HANDLE	ROD, 1/2" ✓	11"	2	5520222	0.94 lbs
3	HANDLE RETAINER	SQUARE BAR 3/8"	2"	4	5520220	0.31 lbs

**APPROVED**  
Washington State  
Department of Transportation  
HQ Traffic Operations Office  
DATE August 8, 2007 TAT

ITEM	QUANTITY	PART	DESCRIPTION	QUAN.	SIZE	TOTAL WT. LBS.
SALES INFORMATION		BILL OF MATERIAL				
CUSTOMER STANDARD PRODUCT		J11 TYPE 5 COVER - PARTS LAYOUT				
SALES S.O. #		STANDARD PRODUCT				
DRAWN JG	LINE #	SCALE FULL	APPROVED	DWG NO.	REV.	
CHECKED	DATE 6/21/04	SHEET 3 OF 5	WEIGHT	CC-0405	H	
THIS DOCUMENT IS THE PROPERTY OF OLDCASTLE PRECAST, INC. IT IS LOANED FOR REFERENCE PURPOSES ONLY AND SHALL NOT BE USED IN ANY WAY INJURIOUS TO THE INTERESTS OF SAID COMPANY. COPYRIGHT © 2004 Oldcastle Precast, Inc. All Rights Reserved.		<b>UTILITY VAULT</b> PO Box 588 Auburn, WA 98001-0588 Psc 800-892-1538 Fax: 253-735-4120		a division of <b>Oldcastle Precast, Inc.</b> Auburn, WA / Meriden, CT / Danden, AZ / Princeton / Memphis / Fontana / San Diego / Phoenix, CA		



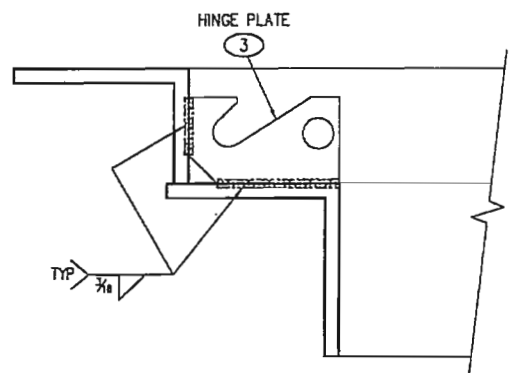
**PLAN VIEW**  
TYPE 5 FRAME - LAYOUT & WELDMENT

**APPROVED AS NOTED**  
Washington State  
Department of Transportation  
HQ Traffic Operations Office  
DATE August 8, 2007 TAT

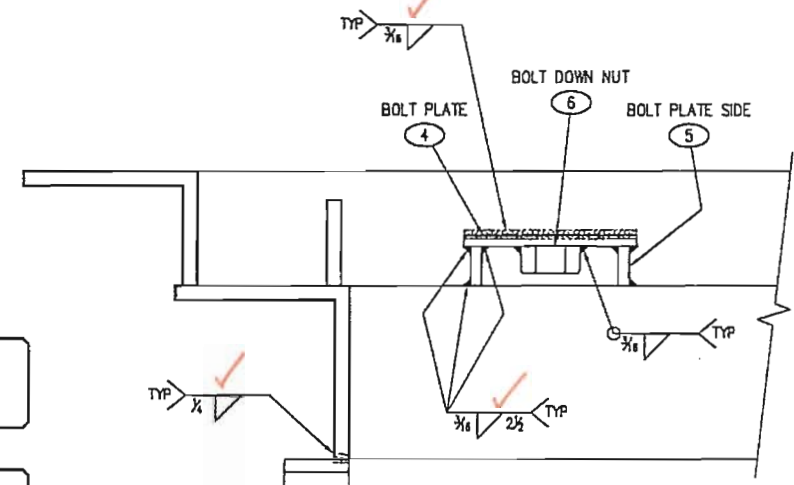
**SHOP NOTE:**  
GRIND ALL SHARP EDGES  
Bolt 1/2" X 8" Galv.

**TOLERANCE NOTE:**  
OVERALL DIMENSIONS HAVE A MAXIMUM  
ALLOWABLE TOLERANCE OF ± 1/8"

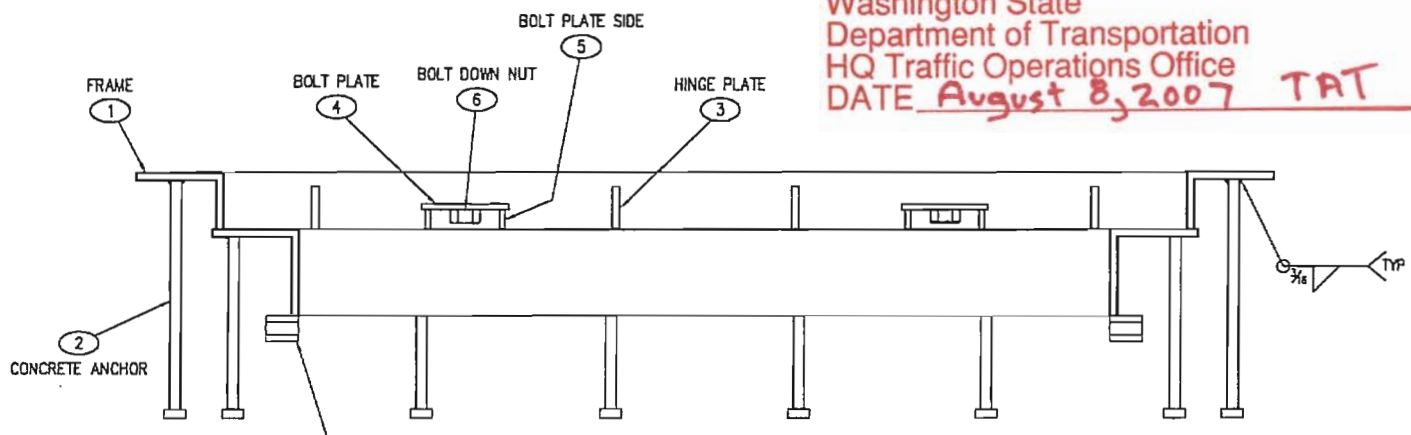
LTR.	REVISION	DATE	BY
A	REVISED BOM	10/4/04	JG
B	REVISED PER CUSTOMER RED MARKS	2/15/05	JG
C	REVISED BOM	4/6/05	JG
D	NO CHANGES	1/22/07	TMB
E	CHANGED GROUNDING NUT TO A 3/8" COUPLER NUT	2/5/07	TMB
F	NO CHANGE	3/2/07	TMB
G	NO CHANGE	4/17/07	TMB
H	ADDED NAME PLATE	6/4/07	TMB



**SECTION BB**  
N.T.S.



**SECTION CC**  
N.T.S.



**SECTION AA**

PART LIST					B.O.M.	
PART	PART NAME	DESCRIPTION	CUT SIZE	QTY.	UV No.	TOTAL
1	FRAME		(SEE SHT 5)	1	—	1 ea
2	CONCRETE ANCHOR	Stud	Bolt 1/2" X 8" GALV. <i>Per 19-06.15</i>	22	5910445	22 ea
3	HINGE PLATE	FLATBAR, 2 3/4" x 1 1/2"	---	4	5210600	4 ea
4	BOLT PLATE	FLATBAR, 1/4" x 3"	2 1/2"	4	5520169	2.12 lbs
5	BOLT PLATE SIDE	FLATBAR, 1/4" x 3"	11/16"	8	5520169	1.17 lbs
6	BOLT DOWN NUT	HEX NUT, 1/2" SS	---	4	---	4 ea
7	GROUNDING NUT	COUPLER NUT, 3/8" x 1-1/8", SS	---	2	---	2 ea
8	NAME PLATE	FLATBAR 1/8" x 2", SS	(SEE SHT 5)	1	---	---
9	SCREW	1/4"-20 x 3/4" ALLEN FLATHEAD, SS	---	4	---	---

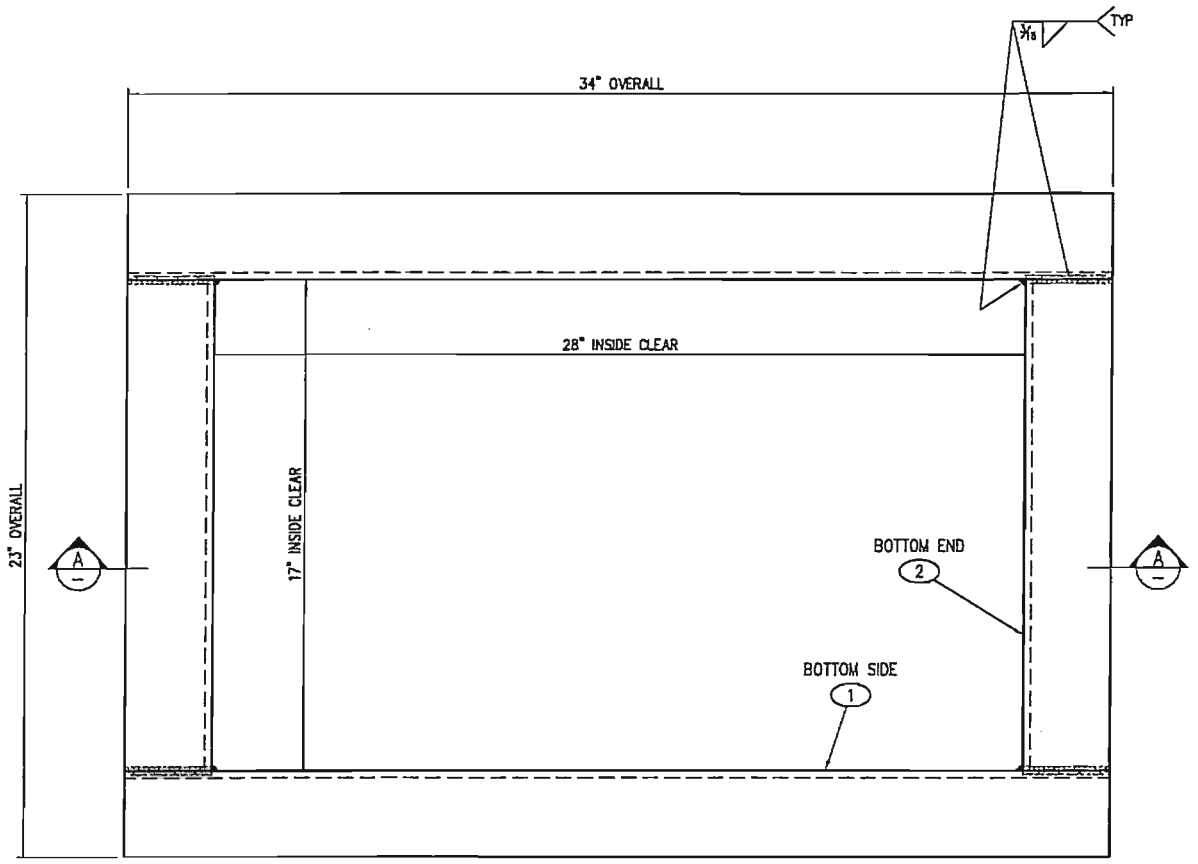
- STRUCTURAL NOTES**
- MATERIAL: ASTM A36 STRUCTURAL STEEL STANDARDS
  - ASSEMBLY: AWS D1.1 WELDING STANDARDS
  - SEE STRUCTURAL NOTE 3, SHEET 1 OF 5

- NOTES**
- FRAME TO BE PAINTED AFTER FABRICATION
  - ALL WELDS TO BE 3/16" FILLET WELDS UNLESS OTHERWISE NOTED
  - BOND LID TO FRAME - SEE NOTE 11, ON WSDOT DETAIL SHEET
  - PARTS PROVIDED BY WILSONVILLE:
- (9) SCREW

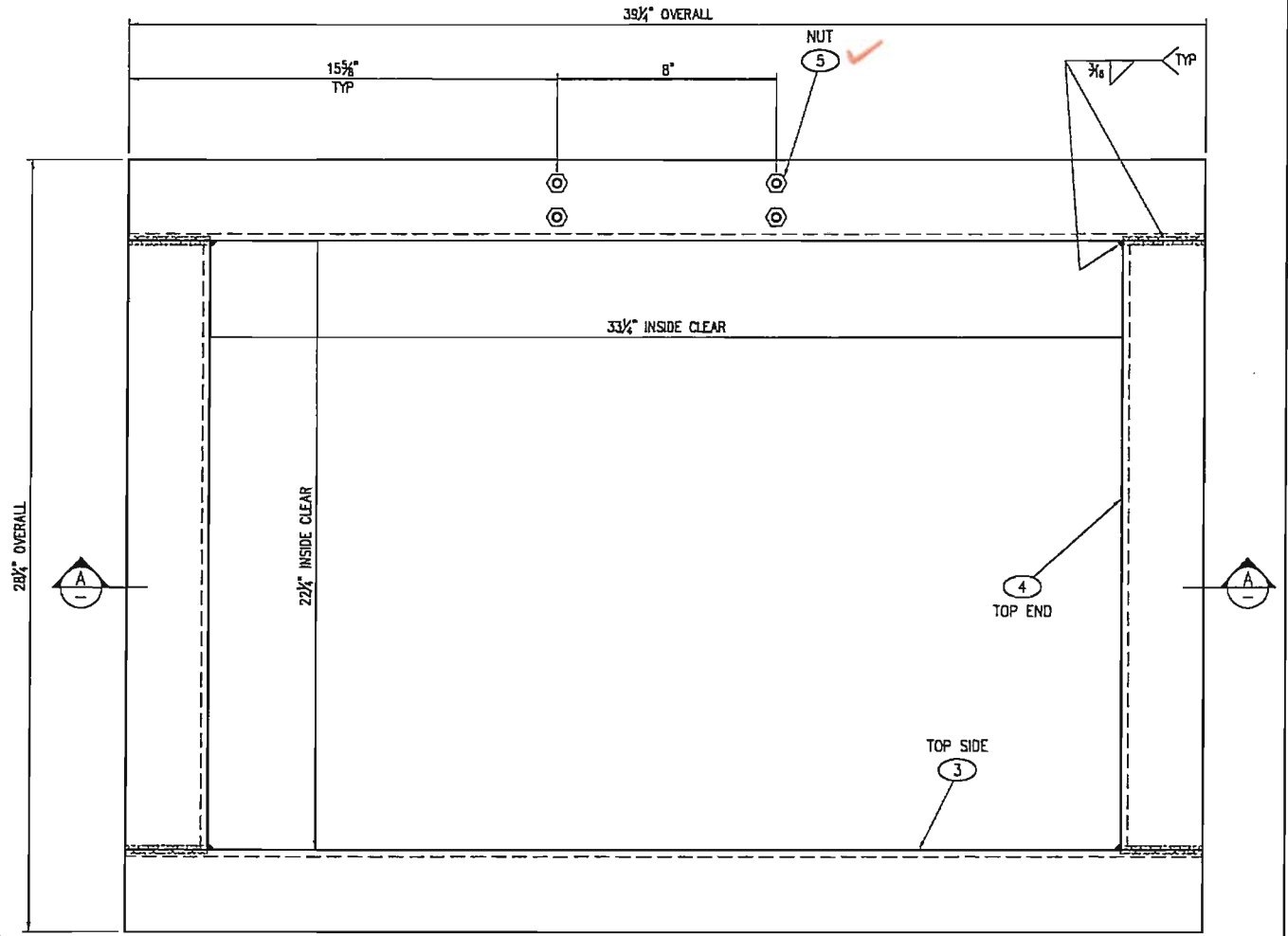
ITEM	QUANTITY	PART	DESCRIPTION	QUAN.	SIZE	TOTAL WT. LBS.
<b>SALES INFORMATION</b>						
J11 TYPE 5 FRAME - LAYOUT & WELDMENT						
CUSTOMER STANDARD PRODUCT						
WSDOT						
SALES	S.O. #	SCALE 3"=1'-0"		APPROVED	DWG NO.	REV.
DRAWN JG	LINE #	DATE 6/23/04		WEIGHT	CC-0405	H
THIS DOCUMENT IS THE PROPERTY OF OLDCASTLE PRECAST, INC. IT IS LOANED TO THE USER FOR THE PURPOSES ONLY AND SHALL NOT BE USED IN ANY WAY INFERIORS TO THE INTERESTS OF SAID COMPANY. COPYRIGHT © 2004 Oldcastle Precast, Inc. All Rights Reserved.						
<b>UTILITY VAULT™</b>				a division of		
Oldcastle Precast, Inc.				Oldcastle Precast, Inc.		

**APPROVED**  
 Washington State  
 Department of Transportation  
 HQ Traffic Operations Office  
 DATE August 8, 2007 TAT

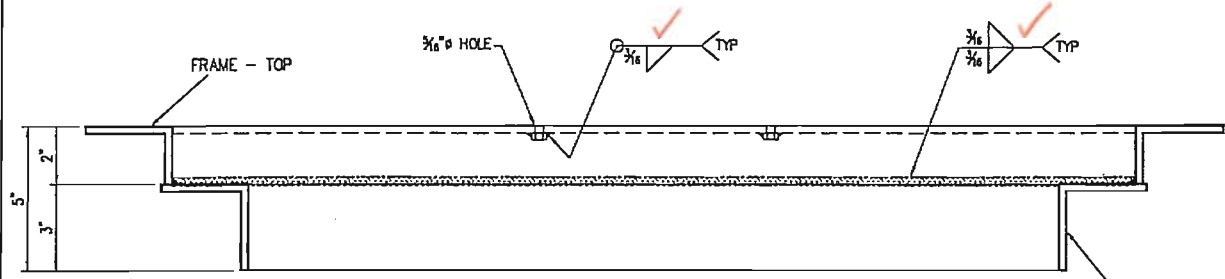
LTR.	REVISION	DATE	BY
A	DECREASED WIDTH BY 2 1/4"	6/28/04	JG
B	REVISED PER CUSTOMER RED MARKS	2/15/05	JG
C	REVISED BOM	4/6/05	JG
D	NO CHANGES	1/22/07	TMB
E	NO CHANGES	2/5/07	TMB
F	NO CHANGES	3/2/07	TMB
G	NO CHANGES	4/17/07	TMB
H	ADDED NAME PLATE	6/4/07	TMB



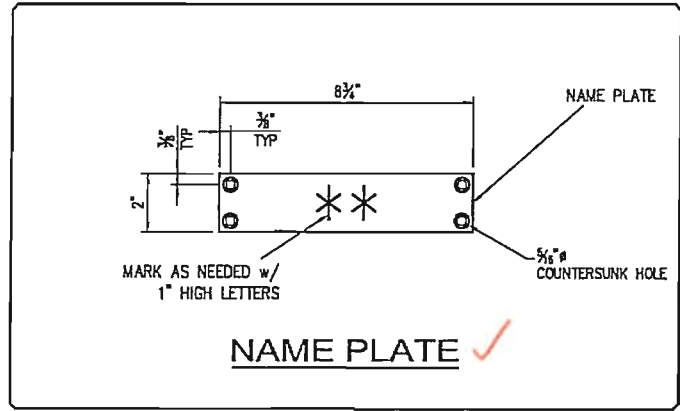
**PLAN VIEW**  
 TYPE 5 FRAME - BOTTOM



**PLAN VIEW**  
 TYPE 5 FRAME - TOP



**SECTION AA**



**NAME PLATE**

**SHOP NOTE:**  
 GRIND ALL SHARP EDGES

**TOLERANCE NOTE:**  
 OVERALL DIMENSIONS HAVE A MAXIMUM ALLOWABLE TOLERANCE OF  $\pm 1/16$ "

**STRUCTURAL NOTES**

- MATERIAL: ASTM A36 STRUCTURAL STEEL STANDARDS
- ASSEMBLY: AWS D1.1 WELDING STANDARDS
- SEE STRUCTURAL NOTE 3, SHEET 1 OF 5

PART LIST					B.O.M.	
PART	PART NAME	DESCRIPTION	CUT SIZE	QTY.	UV No.	TOTAL
1	FRAME - SIDE BOTTOM	ANGLE, 3" x 3" x 1/4"	34"	2		27.76 lbs
2	FRAME - END BOTTOM	ANGLE, 3" x 3" x 1/4"	17"	2		13.88 lbs
3	FRAME - SIDE TOP	ANGLE, 2" x 3" x 1/4"	39 1/4"	2		28.82 lbs
4	FRAME - END TOP	ANGLE, 2" x 3" x 1/4"	22 1/4"	2		15.20 lbs
5	NUT	1/4"-20 HEX NUT, SS	--	4		
8	NAME PLATE	FLATBAR 1/8" x 2", SS	8 3/4"	1	*	

\* SPECIAL ORDER: FLATBAR 1/8" x 2", STAINLESS

ITEM	QUANTITY	PART	DESCRIPTION	QUAN.	SIZE	TOTAL WT. LBS.
<b>BILL OF MATERIAL</b>						
SALES INFORMATION		J11 TYPE 5 FRAME - FRAME LAYOUT				
CUSTOMER STANDARD PRODUCT		WSDOT				
SALES	S.D. #					
DRAWN JG	LINE #	SCALE 3"=1'-0"	APPROVED	DWG NO.	REV.	
CHECKED	DATE 6/23/04	SHEET 5 OF 5	WEIGHT	CC-0405	H	
<small>THIS DOCUMENT IS THE PROPERTY OF OLDCASTLE PRECAST, INC. IT IS SUBMITTED FOR REFERENCE PURPOSES ONLY AND SHALL NOT BE USED IN ANY WAY UNLESS TO THE INTERESTS OF SAID COMPANY. COPYRIGHT © 2004 Oldcastle Precast, Inc. All Rights Reserved.</small>				<small>a division of</small> 		