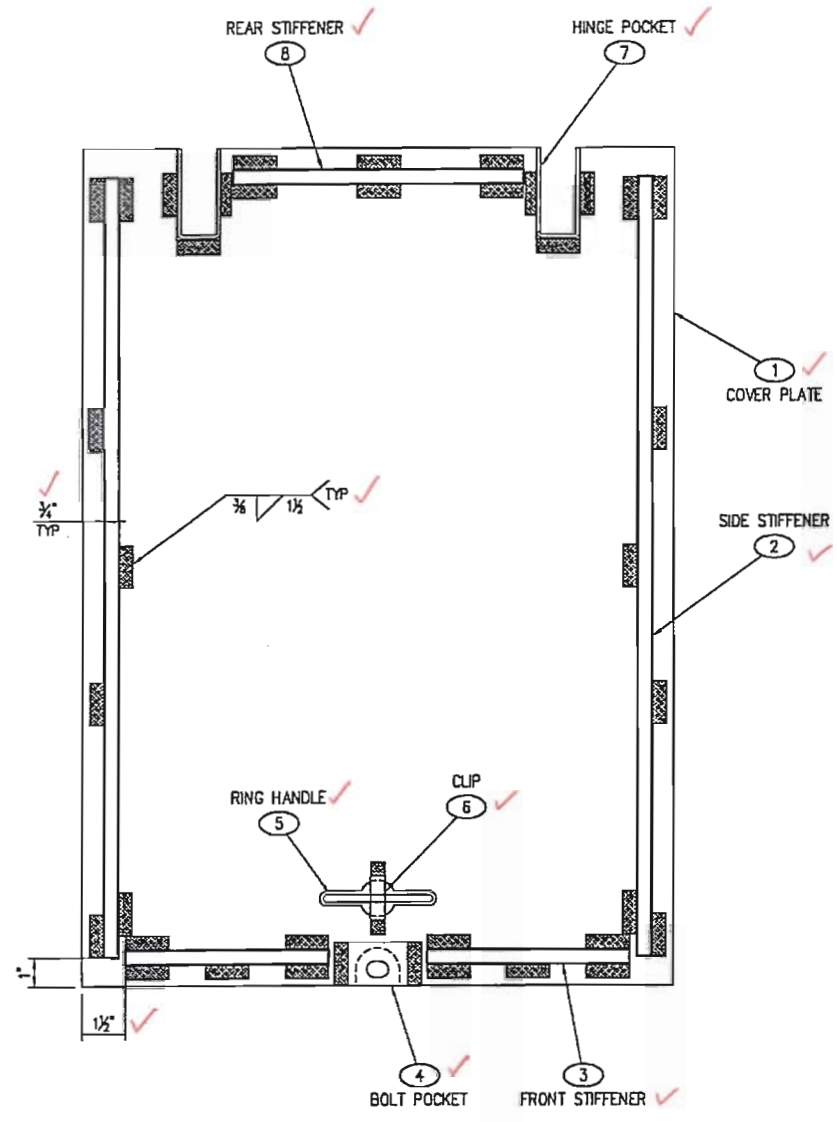
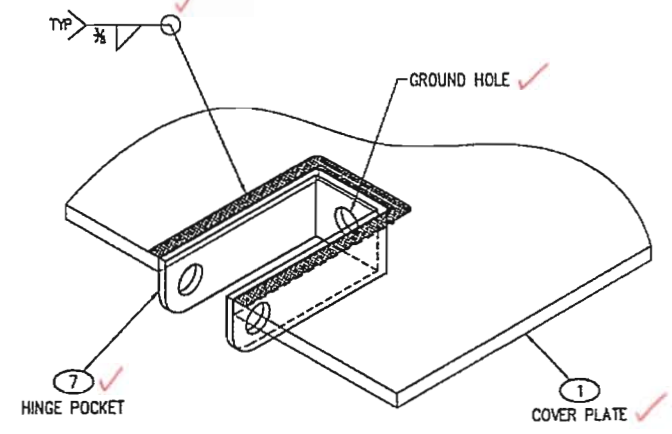
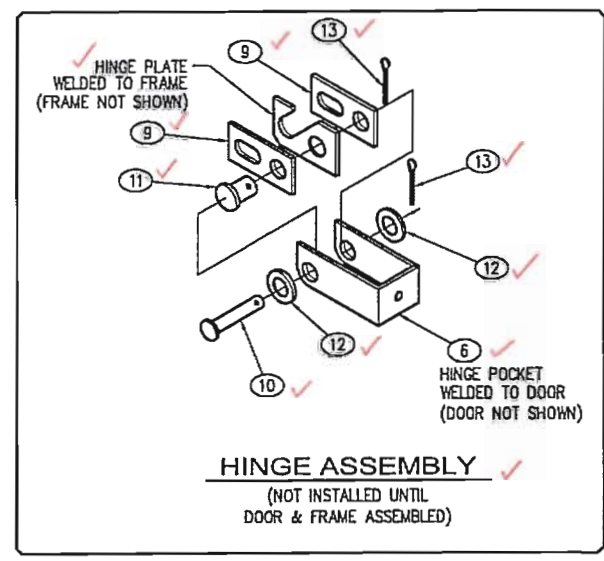


CTR.	REVISION	DATE	BY
A	ADD GROUND HOLE CALLOUT IN DETAIL VIEW	4/12/04	JG
B	CHNG TO 3/8" WELDS	4/20/04	MR
C	CHANGE TITLE TO 3/7/8 DOORS	6/30/04	JG
D	NO CHANGES	1/19/2007	TMB
E	REVISED BOM, ADDED HINGE ASSEMBLY DETAIL	4/17/07	TMB



PLAN VIEW
UNDERSIDE OF DOOR

TOLERANCE NOTE:
OVERALL DIMENSIONS HAVE A MAXIMUM ALLOWABLE TOLERANCE OF $\pm 1/16$ "



DETAIL
TOPSIDE OF DOOR

STRUCTURAL NOTES

- MATERIAL: ASTM A36 STRUCTURAL STEEL STANDARDS
- ASSEMBLY: AWS D1.1 WELDING STANDARDS
- COATING: ASTM A123 HOT-DIP GALVANIZING STANDARDS

NOTES

- COVER TO BE HOT DIPPED GALVANIZED AFTER FABRICATION
- SEE SHEET 1 FOR FRAME ASSEMBLY
- ALL WELDS TO BE 1 1/2" LONG x 3/8" FILLET WELDS UNLESS OTHERWISE NOTED
- WEIGHT BEFORE GALVANIZING: 62.5 lbs. (PER DOOR)
- ASSEMBLY PARTS PROVIDED BY WILSONVILLE:
 - 9 SS HINGE SIDE PLATE
 - 10 SS HINGE PIN
 - 11 SS HINGE PIN
 - 12 SS WASHER
 - 13 SS COTTER PIN
 - 14 SS RETAINING BOLT

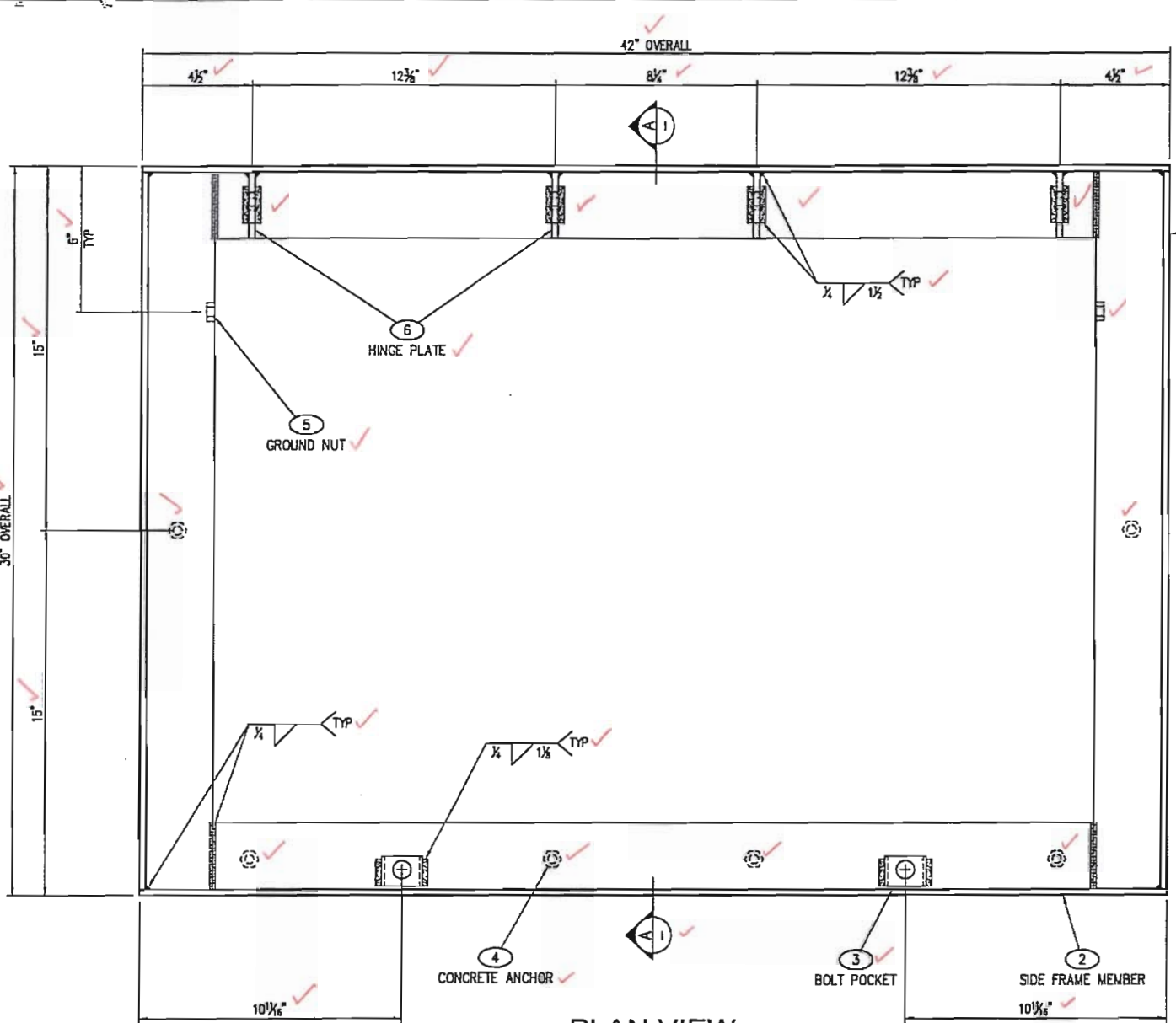
PART LIST						B.O.M.	
PART	PART NAME	DESCRIPTION	CUT SIZE	QTY.	UV No.	TOTAL	
1	COVER PLATE	1/2" DIAMOND PLATE	SEE SHT 3	2	5540090	0.12 ea	
2	SIDE STIFFENER	FLATBAR, 1/2" x 1 1/4"	27"	4	---	19.13 lbs	
3	FRONT STIFFENER	FLATBAR, 1/2" x 1 1/4"	7"	4	---	4.98 lbs	
4	BOLT POCKET	FLATBAR, 3/16" x 1 1/2"	2"	2	5520050	0.64 lbs	
5	RING HANDLE	5/16" MILD STEEL	---	2	5210090	2 ea	
6	CLIP	FLATBAR, 3/16" x 3/4"	---	2	5210100	2 ea	
7	HINGE POCKET	FLATBAR, 11 GA	---	4	5310040	4 ea	
8	REAR STIFFENER	FLATBAR, 1/2" x 1 1/4"	10"	2	---	3.54 lbs	
9	SS HINGE SIDE PLATE	PLATE, 2-1/2" x 1-1/4"	---	8	---	8 ea	
10	SS CLEVIS HINGE PIN	PIN, 3/8" x 2 1/4"	---	4	---	4 ea	
11	SS CLEVIS HINGE PIN	PIN, 1/2" x 1"	---	4	---	4 ea	
12	SS WASHER	WASHER, 9/16"	---	8	---	8 ea	
13	SS COTTER PIN	COTTER PIN, 2"	---	8	---	8 ea	
14	SS RETAINING BOLT	1/2" x 1-1/2"	---	4	---	4 ea	

*QUANTITIES ARE FOR (1) COMPLETE SET

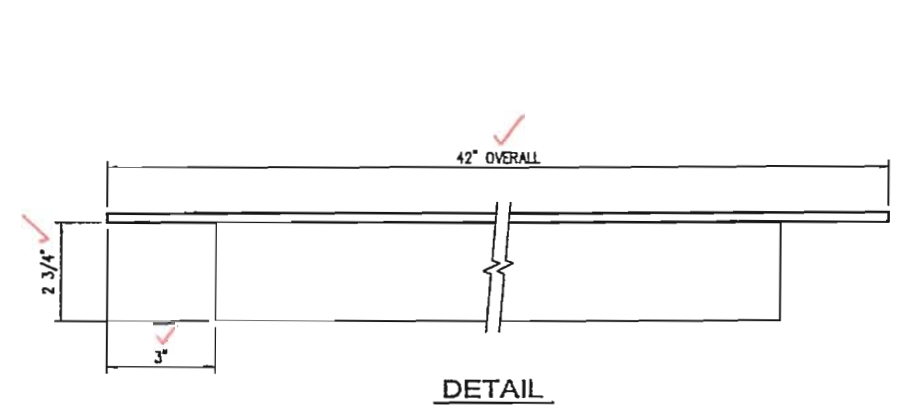
APPROVED
Washington State
Department of Transportation
HQ Traffic Operations Office
DATE June 30, 2007 TAT

ITEM	QUANTITY	PART	DESCRIPTION	QVAL	SIZE	TOTAL WT. LBS.
BILL OF MATERIAL						
SALES INFORMATION		J11 TYPE 3/7/8 COVER - WELD DETAIL				
CUSTOMER STANDARD PRODUCT		(2) DOORS PER ASSEMBLY				
SALES		STANDARD PRODUCT				
DRAWN JG	LINE #	SCALE 3"=1'-0"	APPROVED	DWG NO.	REV.	
CHECKED	DATE 3/22/04	SHEET 2 OF 3	WEIGHT	CC-0398	E	
THIS DOCUMENT IS THE PROPERTY OF OLDCASTLE PRECAST, INC. IT IS LOANED FOR REFERENCE PURPOSES ONLY AND SHALL NOT BE USED IN ANY WAY IN VIOLATION OF THE INTERESTS OF SAID COMPANY. COPYRIGHT © 2004 Oldcastle Precast, Inc. All Rights Reserved.		 UTILITY VAULT™ PO Box 588 Auburn, WA 98071-0588 P.O. 800-852-1538 Fax: 253-725-4101		a division of Oldcastle Precast, Inc.		

LTR.	REVISION	DATE	BY
A	ADD GROUND NUT	4/12/04	JG
B	ADD DIMS FOR BOLT POCKETS	4/14/04	JG
C	CHANGE TITLE TO 3/7/8 DOORS	6/30/04	JG
D	CHANGED CONCRETE ANCHOR TO 3/8" x 3-1/8" STUD	1/19/2007	TMB
E	NO CHANGES	4/17/07	TMB



PLAN VIEW
LAYOUT (SHOWN AS POURED)



DETAIL

APPROVED AS NOTED
Washington State
Department of Transportation
HQ Traffic Operations Office
DATE June 30, 2007 TAT

PART LIST						B.O.M.	
PART	PART NAME	DESCRIPTION	CUT SIZE	QTY.	UV No.	TOTAL	
✓ 1	END FRAME MEMBER	ANGLE, 2" x 3" x 1/4"	29 1/2"	2	5510220	20.16 lbs	
✓ 2	SIDE FRAME MEMBER	ANGLE, 2" x 3" x 1/4"	SEE DETAIL	2	5510220	26.65 lbs	
✓ 3	BOLT POCKET	11 GA MILD STEEL	---	2	5310130	2.00	
✓ 4	CONCRETE ANCHOR	STUD 3/8" x 3-1/8" (5)	---	10	5910455	10.00	
✓ 5	GOUND NUT	5/16" HEX NUT	---	2	0PC	2.00	
✓ 6	HINGE PLATE	1/4" HR STEEL	---	4	5210600	4.00	

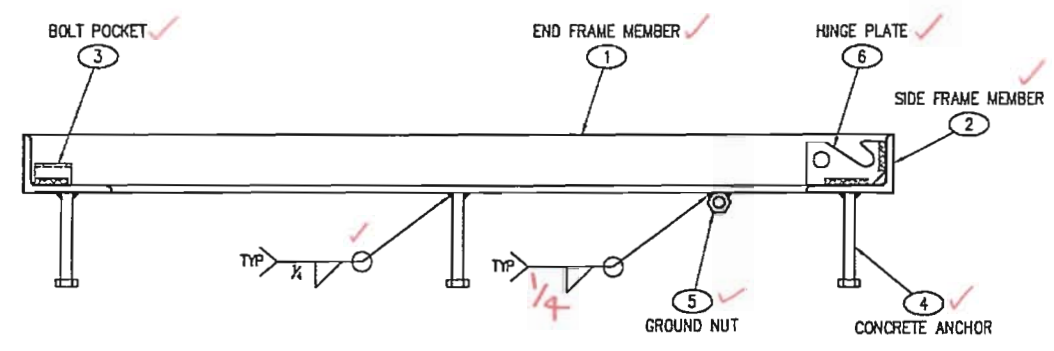
(5) welded sheer connector per standard specification 9-06.15.

STRUCTURAL NOTES

- MATERIAL: ASTM A36 STRUCTURAL STEEL STANDARDS
- ASSEMBLY: AWS D1.1 WELDING STANDARDS
- COATING: ASTM A123 HOT-DIP GALVANIZING STANDARDS

NOTES

- COVER TO BE HOT DIPPED GALVANIZED AFTER FABRICATION
- SEE SHEET 1 FOR FRAME ASSEMBLY
- ALL WELDS TO BE 1 1/2" LONG x 1/4" FILLET WELDS UNLESS OTHERWISE NOTED
- WEIGHT BEFORE GALVANIZING: 54 lbs.

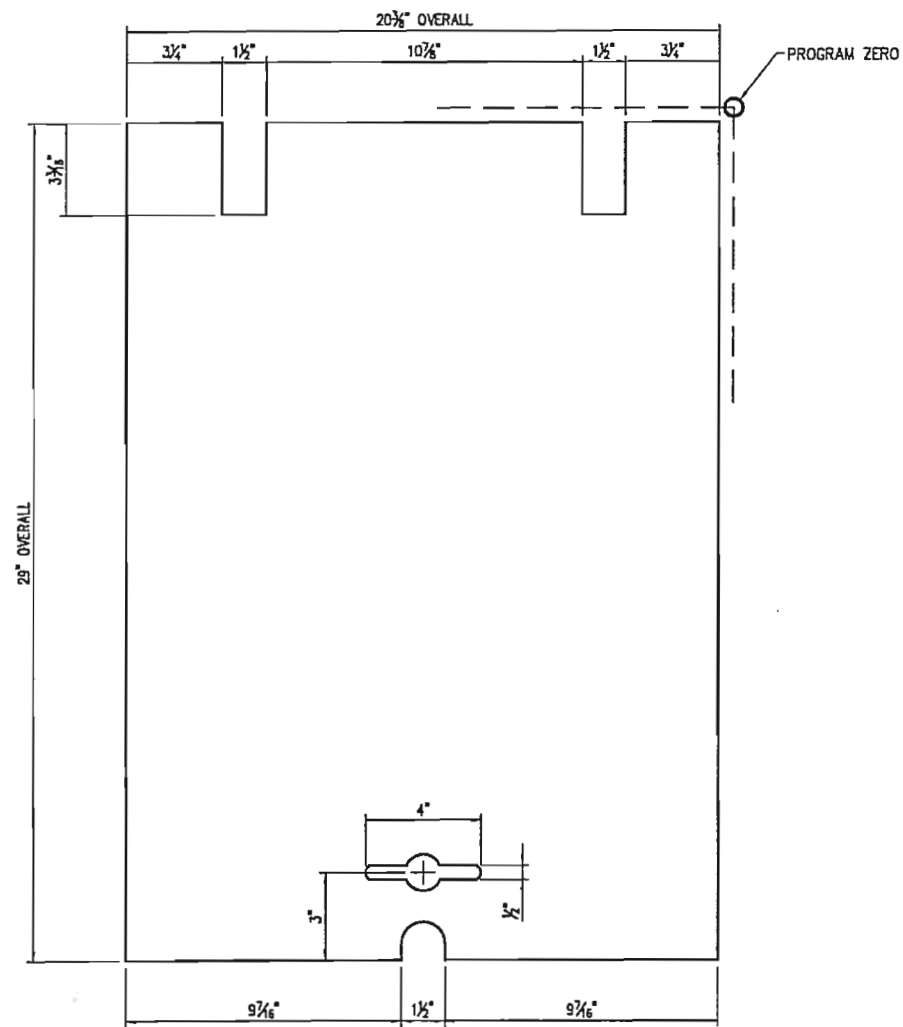


SECTION AA

TOLERANCE NOTE:
OVERALL DIMENSIONS HAVE A MAXIMUM ALLOWABLE TOLERANCE OF ± 1/16"

ITEM	QUANTITY	PART	DESCRIPTION	QUAN.	SIZE	TOTAL WT. LBS.
BILL OF MATERIAL						
SALES INFORMATION		J11 TYPE 3/7/8 FRAME - WELD ASSEMBLY				
CUSTOMER	STANDARD PRODUCT	STANDARD PRODUCT				
SALES	S.O. #					
DRAWN	JG	LINE #	SCALE 3"=1'-0"	APPROVED	DWG NO.	REV.
CHECKED		DATE 3/22/04	SHEET 1 OF 3	WEIGHT	CC-0398	E
THIS DOCUMENT IS THE PROPERTY OF ELCASTE PRECAST, INC. IT IS SUBMITTED FOR REFERENCE PURPOSES ONLY AND SHALL NOT BE USED IN ANY WAY INJURIOUS TO THE INTERESTS OF SAID COMPANY. COPYRIGHT © 2004 Elcaste Precast, Inc. All Rights Reserved.		UTILITY VAULT™ PO Box 558 Auburn, WA 98071-0558 Ph: 800-852-1538 Fax: 253-735-4201		a division of Oldcastle Precast, Inc.		

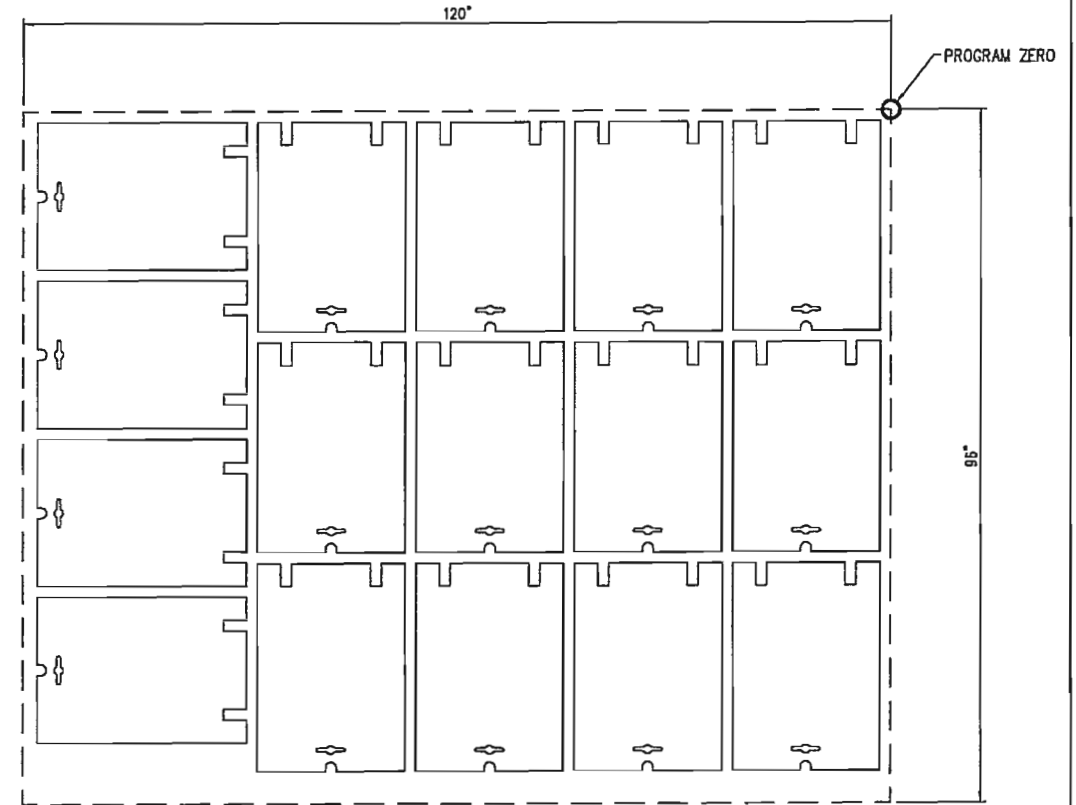
LTR.	REVISION	DATE	BY
A	CHANGE TITLE TO 3/7/8 DOORS	6/30/04	JG
D	NO CHANGES	1/19/2007	TMB
E	NO CHANGES	4/17/07	TMB



PLAN VIEW

NOTES:

1. MATERIAL: 1/2" DIAMOND PLATE (#5540090)
2. LAYER CUTA IS FOR SINGLE CUT PROGRAM (J11TYP78_A)
3. LAYER CUTB IS FOR MULTIPLE CUT PROGRAM (J11TYP78_B) - SEE DETAIL



DETAIL
96" x 120" SHEET
N.T.S.

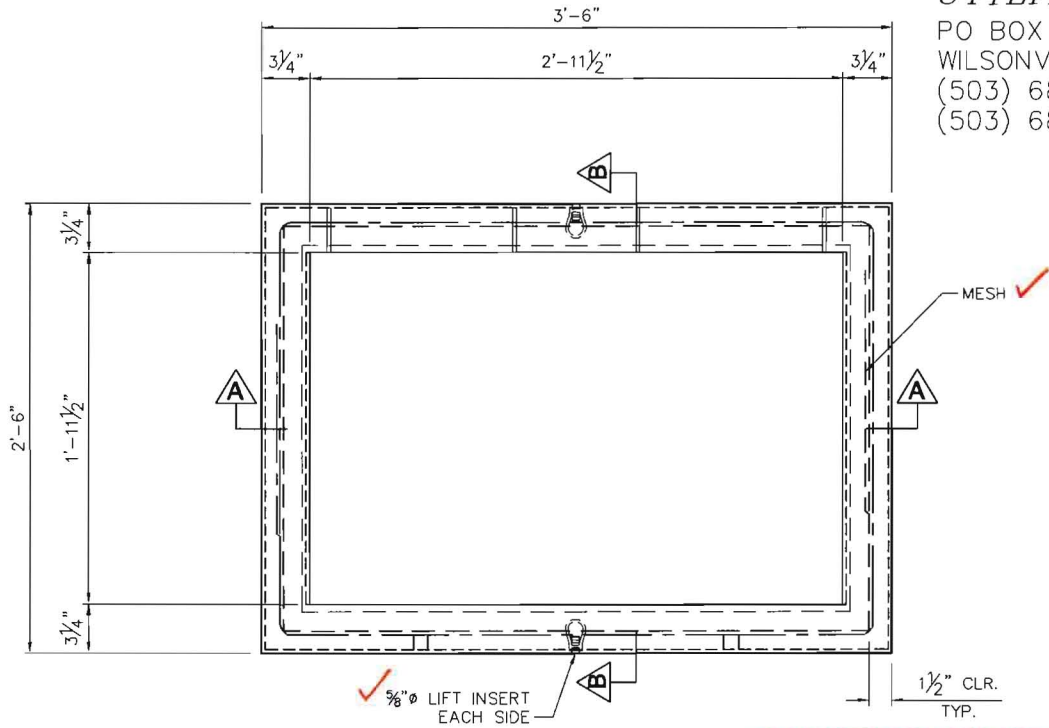
APPROVED
Washington State
Department of Transportation
HQ Traffic Operations Office
DATE June 30, 2007 TAT

ITEM	QUANTITY	PART	DESCRIPTION	QUAN.	SIZE	TOTAL WGT. LBS.
BILL OF MATERIAL						
SALES INFORMATION		J11 TYPE 3/7/8 COVER - CUT PROGRAM				
CUSTOMER	STANDARD PRODUCT	STANDARD PRODUCT				
DRAWN	JG	LINE #	SCALE 3"=1'-0"	APPROVED	DWG NO.	REV.
CHECKED		DATE 3/22/04	SHEET 3 OF 3	WEIGHT	CC-0398	E
<small>THIS DOCUMENT IS THE PROPERTY OF OLDCASTLE PRECAST, INC. IT IS SUBMITTED FOR REFERENCE PURPOSES ONLY AND SHALL NOT BE USED IN ANY WAY INJURIOUS TO THE INTERESTS OF SAID COMPANY. COPYRIGHT © 2004 Oldcastle Precast, Inc. All Rights Reserved</small>				<small>a division of</small> 		
<small>PO Box 588 Auburn, WA 98001-0588 Pk: 800-893-1538 Fax: 253-735-4101</small>		<small>Auburn, WA / Merrillville, IN / Chandler, AZ / Prescott, AZ / Cary, NC / San Diego, CA / Stockton, CA</small>				

UTILITY VAULT

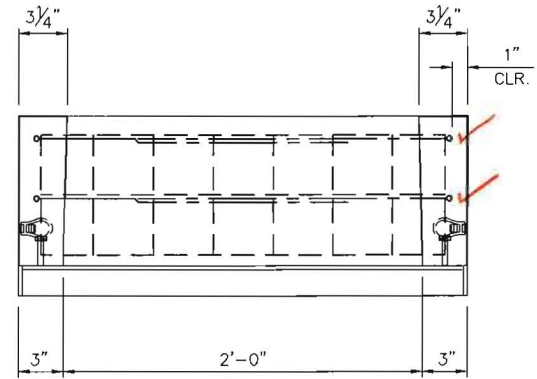
PO BOX 323
 WILSONVILLE, OREGON
 (503) 682-2844
 (503) 682-2657 FAX

LTR.	REVISION	DATE	BY
A	MESH TO (1) PIECE, ADDED REBAR	4-19-07	ERH
B	WALLS TO 3" THICK	4-27-07	ERH
C	DEL. LIFT PIN/ ADD. 5/8" FL INSERT	8-10-07	AV
D	ADDED #3 HOOPS REMOVED VERTICALS	12-7-07	JPM

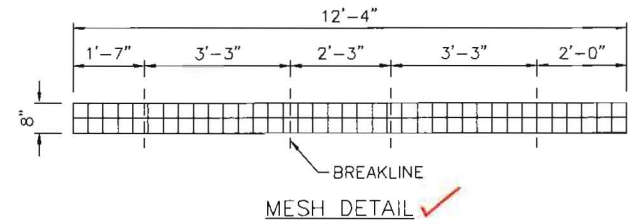


PLAN VIEW

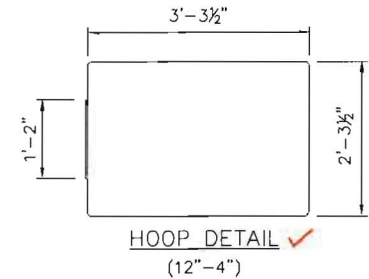
APPROVED
 Washington State
 Department of Transportation
 HQ Traffic Operations Office
 DATE January 23, 2008 TAT



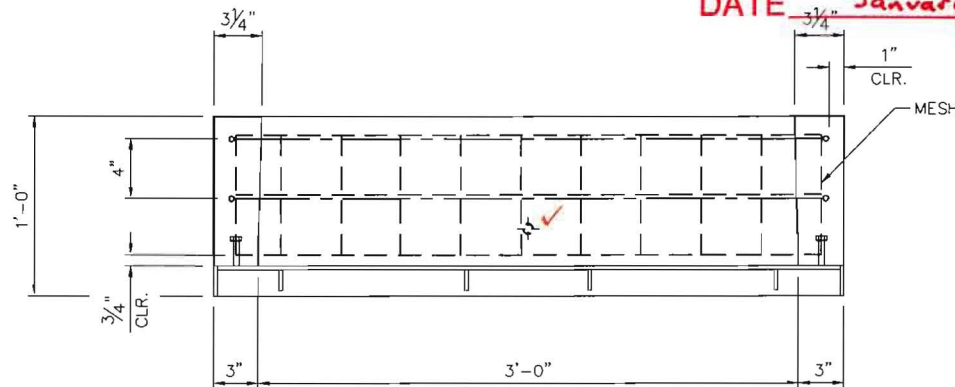
SECTION BB



MESH DETAIL



HOOP DETAIL



SECTION AA

CONCRETE:
 VOL. = 0.0718 CU YD
 WT. = 291 LB

PART	DESCRIPTION	QTY.	SIZE	TOTAL WT. LBS.
	LIFT INSERT	2	5/8" FL	
	FRAME	1	TYPE 7/8 "DUAL LID"	
	MESH W2.9/W2.9 4x4	1	SEE MESH DETAIL	8 SF
	HOOP #3 GR. 60	2	SEE HOOP DETAIL	9

BILL OF MATERIAL

DRAWN	AV	DATE	3-10-06	S.O.	Standard	SP. LINE #	DWG NO.	REV.
CHECKED		SCALE	2"=1'	CUST.			CWA-TYPE7-8-MESH	D

WA DOT TYPE 7/8 JUNCTION BOX
REINFORCING DETAILS

THIS DOCUMENT IS THE PROPERTY OF OLDCASTLE PRECAST, INC. IT IS SUBMITTED FOR REFERENCE PURPOSES ONLY AND SHALL NOT BE USED IN ANY WAY INJURIOUS TO THE INTERESTS OF SAID COMPANY. COPYRIGHT © 2007 Oldcastle Precast, Inc. All Rights Reserved.

UTILITY VAULT™
 PO Box 323 Wilsonville, OR 97070
 503-682-2844 Fax: 503-682-2657

a division of
Oldcastle Precast, Inc.
 Auburn, WA / Marysville, OR / Chandler, AZ / Piquette, MI / Uxbridge, MA / San Diego, CA