



## WSDOT Aviation Monthly Report October 2010

---

### **Draft land-use planning guide available for public review**

The public has an opportunity to weigh in on the state's updated guide for airport land use compatibility planning.

Washington State Department of Transportation's (WSDOT) Airports and Compatible Land Use Guidebook is available for review online at [www.wsdot.wa.gov/aviation/Planning/LandUseGuidebookUpdate.htm](http://www.wsdot.wa.gov/aviation/Planning/LandUseGuidebookUpdate.htm) during a 10-day public-comment period from Oct. 27 to Nov. 9.

Anyone can submit comments via e-mail to [timmerc@wsdot.wa.gov](mailto:timmerc@wsdot.wa.gov); by phone at 360-651-6312; by fax at 360-651-6319; or by mail to WSDOT Aviation, 18204 59th Dr NE, Suite B, Arlington WA 98223.

Effective and proactive land-use planning is critical for managing development around airports. WSDOT updated the guidebook to highlight the importance of airport and land-use compatibility planning and to streamline the process for airport sponsors and local jurisdictions.

The guidebook does not change land-use requirements. It is intended to serve as a better tool with reader-friendly graphics and visual aids to communicate concepts and effective practices. It includes a six-step planning process with tools, worksheets and reference materials to assist local jurisdictions, planners and airports in making informed land-use compatibility decisions.

The guidebook was released previously for a 30-day public comment period on May 10. WSDOT reviewed and incorporated feedback from that comment period into the latest draft. WSDOT plans to publish the final version of the Airports and Compatible Land Use Guidebook early next year.

### **Town of Twisp celebrates new runway**

The Town of Twisp celebrated the re-opening of the newly reconstructed and widened Runway 10/28 with a gala ribbon cutting ceremony on October 16. The event concluded a three-year effort to improve Twisp's runway.

The project added 24 feet to the runway width bringing it to the 60 foot Federal Aviation Administration (FAA) design standard. It also brought the runway pavement condition

index (PCI) up from a poor rating of 41 to a perfect rating of 100.

These improvements were identified in Twisp's 2007 Airport Layout Plan (ALP). An ALP defines the short-term and long-term needs of the airport through a comprehensive evaluation of airport conditions and FAA design standards.

This project also provided jobs to boost the local economy. Local contractor, Lloyd Logging, along with several sub-contractors worked on the project, which employed over 30 people and provided over \$85,000 in wages.

WSDOT provided the Town with \$553,799 in grant funds to complete the work:

- \$64,315: design and environmental (2007)
- \$250,000: phase I construction (2009)
- \$211,277: phase II construction (2010)

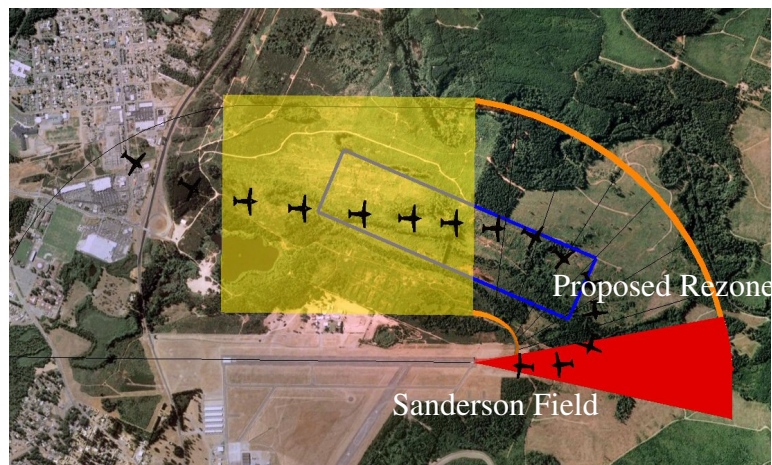
On hand for the celebration were State Representative Mike Armstrong, WSDOT Aviation's John Sibold and Eric Johnson, Town of Twisp Mayor Soo Ing-Moody, Airport Manager Bob Howson, project engineer George Reynolds from Riedesel Engineering, and Washington Pilot Association President John Dobson.

## **Western Washington, Growth Management Hearings Board renders decision**

The Washington State Western Washington Growth Management Hearings Board made its final decision regarding the Port of Shelton vs. the City of Shelton and Shelton Hills Investors, LLC case. On April 19, 2010, the City of Shelton adopted ordinance 1764-0310, which amended the city's comprehensive plan.

The amendment re-

designated the zoning of 160 continuous acres from commercial industrial to neighborhood residential adjacent to Sanderson Field. WSDOT planners had reviewed the jurisdiction's existing comprehensive plan policies and obligations under the GMA, the property's proximity to the airport, airport operations, current compatibility status and recommended denial of the rezone. The Port of Shelton concurred with WSDOT's position, and strenuously opposed the rezone. On April 30, 2010, the attorney for the Port of Shelton filed a petition for review. The Port's attorney argued that the ordinance would allow the encroachment of incompatible development adjacent to Sanderson Field and



would inevitably lead to conflict between the neighbors. After weighing facts and testimony from experts in the field, the three member hearings board imposed an order of invalidity on the ordinance. This case establishes a precedent for future cases and will guide decision-makers choices in the future. WSDOT will remain available to provide the City of Shelton with technical assistance in the future.

## WSDOT Adds New Prosser Airport Webcam to Aviation Website

This week the Port of Benton completed installation of their newest camera at the Prosser Airport. The camera was purchased with WSDOT Aviation security grant funds which the Port received for completing an airport security plan for the airport.

This latest camera addition makes the 28<sup>th</sup> in WSDOT's network of cameras across the state providing visual information to pilots. Additional cameras will soon be installed at the Olympia Regional and Moses Lake Municipal Airports.

