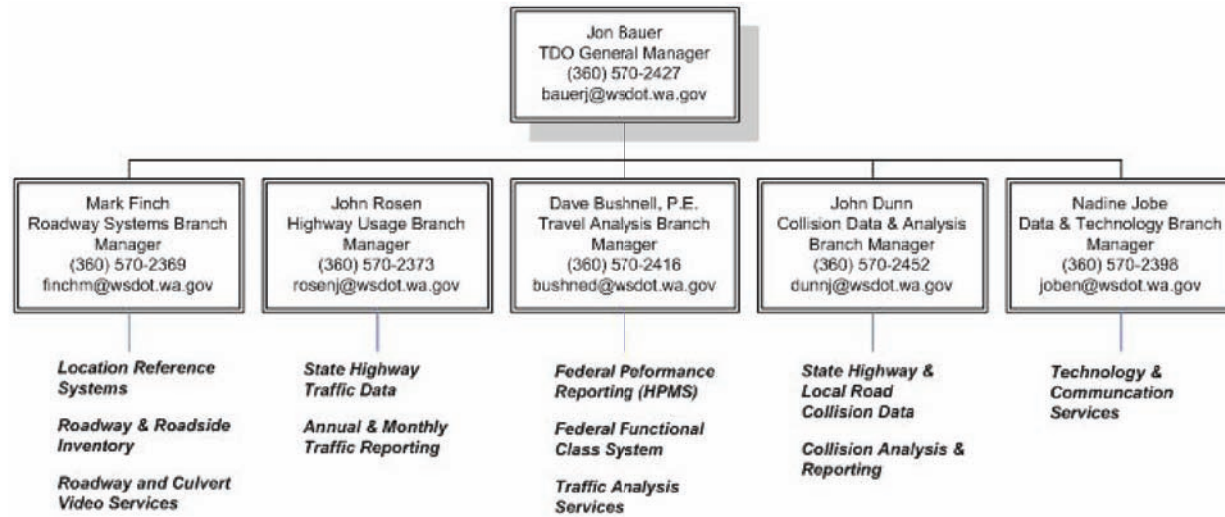


TDO Management Team



Transportation Data Office

7345 Linderson Way SW
 Tumwater, WA 98501
 PO BOX 47380
 Olympia, WA 98504-7380
 (360) 570-2350
 (360) 570-2400 fax

For further information on TDO products and services you may visit our website at www.wsdot.wa.gov/mapsdata/tdo or access the Better Decisions Through Better Data booklet at <http://www.wsdot.wa.gov/mapsdata/tdo/communication.htm>

Transportation Data Office “TDO”



Good data is the “fuel” that drives good transportation decisions.

Preservation, Safety, Mobility, Environmental, and Stewardship issues all rely on data for decisions about operating and improving the State Highway System.



What We Do

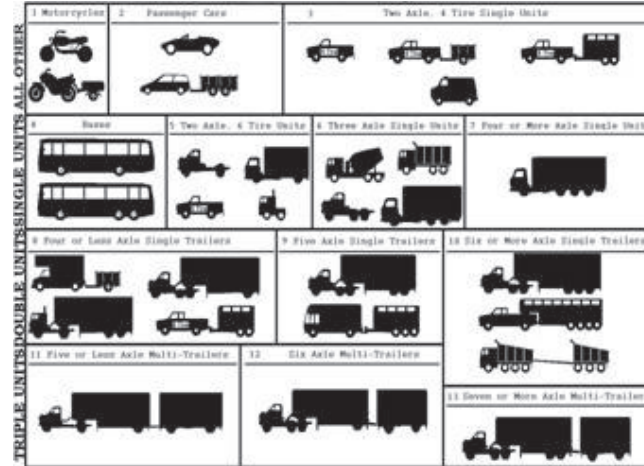
Our mission is better decisions through better data! We collect, process, analyze and report traffic, roadway, and collision data for operating and improving the state transportation system.

| Safety | Preservation | Mobility | Environment | Stewardship |
|---|---|--|--|--|
| <ul style="list-style-type: none"> • Provide collision data for all public roads to determine where collisions are occurring and causal factors. • Provide roadway information to locate and analyze collisions. • Provide roadway feature information for highway safety analysis. • Provide data for before/after measurement of safety projects. | <ul style="list-style-type: none"> • Provide highway asset information for determining how many miles and lanes of highway need to be maintained and preserved. • Provide truck data to determine pavement structural requirements. • Provide video inside at-risk culverts. | <ul style="list-style-type: none"> • Provide traffic data to determine where congestion is occurring and report annual traffic growth and support land use decisions. • Provide highway asset information about lanes and shoulders for determining highway capacity. • Provide data for before/after measurement of mobility projects. | <ul style="list-style-type: none"> • Provide information for locating transportation features along highways for environmental analysis purposes. • Provide annual Vehicle Miles Traveled for monitoring climate change legislation and performing air quality analysis. | <ul style="list-style-type: none"> • Provide public road data to the Federal Highway Performance Monitoring System for determining national transportation needs and federal funding. • Manage the Federal Functional Class system for all public roads in Washington. |

Traffic

The TDO collects and reports state highway traffic data so that WSDOT can measure travel demand (vehicle miles travelled (VMT)), identify mobility needs, design projects for lane and pavement needs, support revenue analysis, and meet federal reporting requirements including data for the Strategic Highway Research Program/Long Term Pavement Performance program (SHRP/LTPP) provided to Federal Highway Administration (FHWA).

TDO data is used to provide travel analysis and forecasting, maintenance of the Freight and Goods System database, and travel modeling and forecasting.



Federal Reporting/HPMS

The TDO manages the federal functional class system for all public roads in Washington to meet federal regulations, support planning, determine design criteria, and support federal fund eligibility for local agency projects.

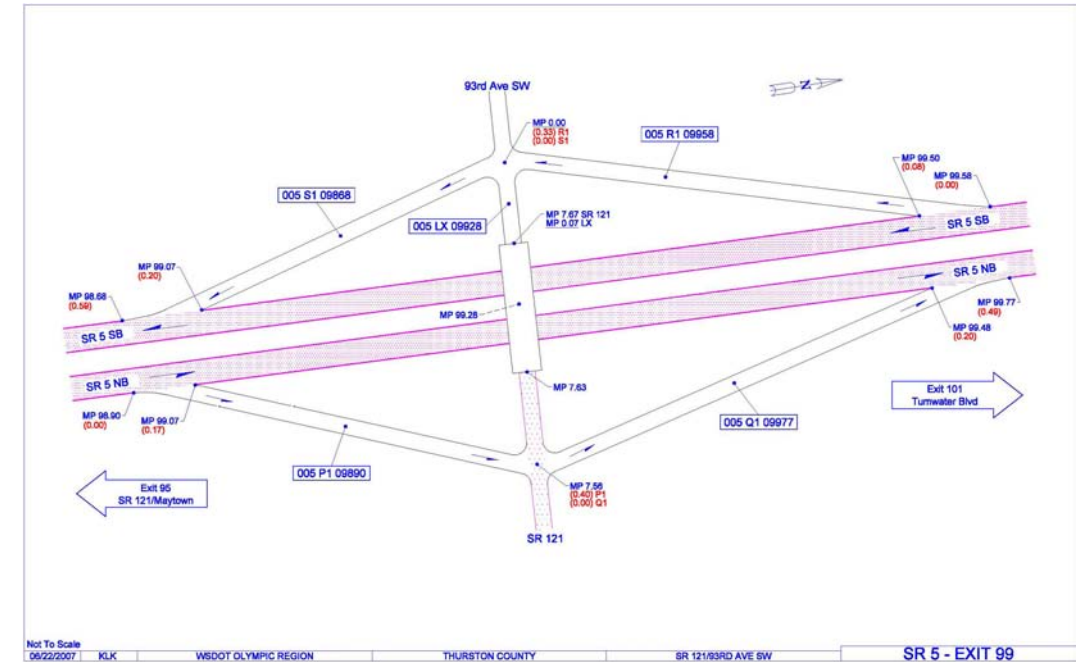
The TDO is responsible for reporting to the Highway Performance Monitoring System (HPMS), which is a statewide and national information system that contains data collected, processed, and analyzed by the TDO and is used to assess the condition of our nation's highways.

Roadway

The TDO maintains current state highway centerline milepost reference and geospatial position, along with inventory locations of roadway and fixed-object roadside features; interchanges/intersections, and various jurisdictional boundaries.

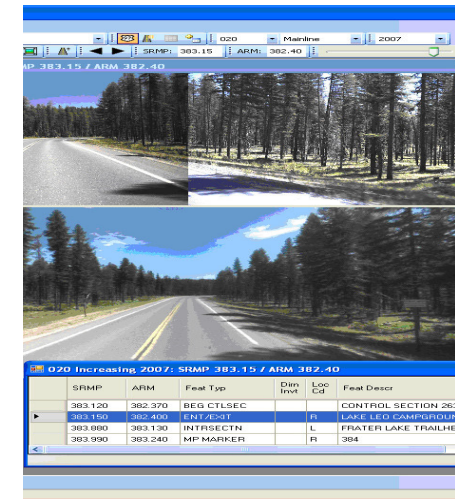
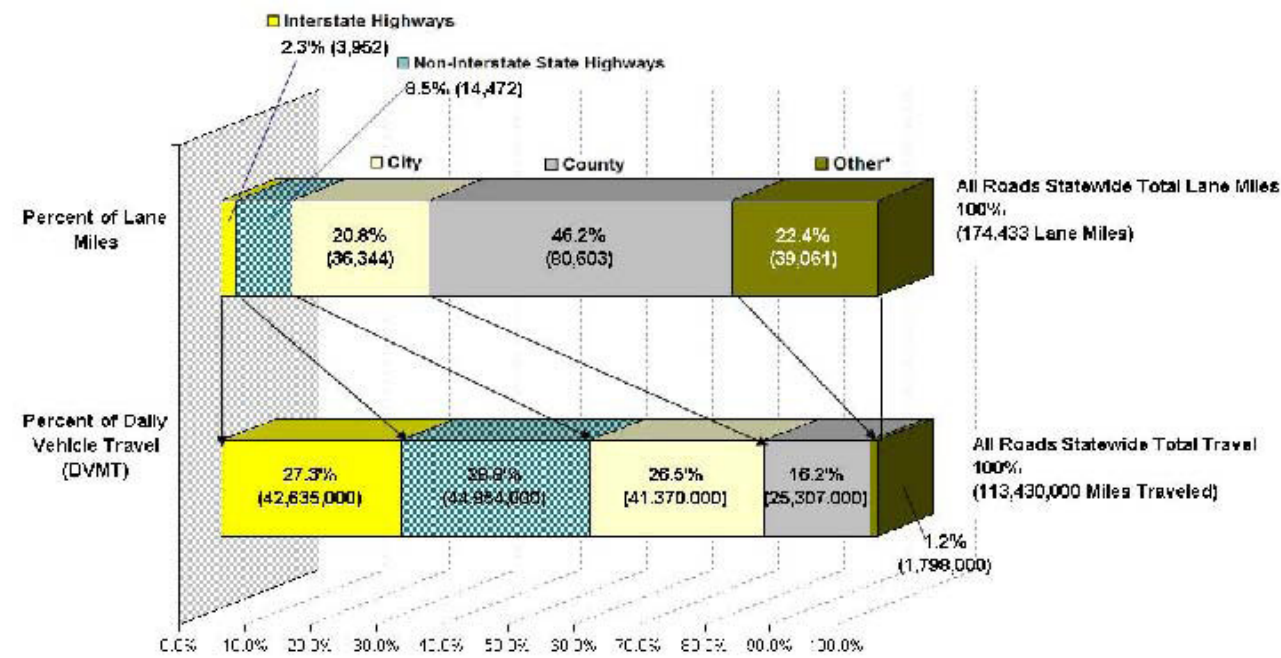
The TDO captures video along state highways, enabling organizations to view highways from their desktop which increases productivity by reducing the need for some onsite field reviews.

The TDO performs video culvert inspections which assist in early detection of potential problems and allows proactive repair and the opportunity to replace at-risk culverts before failure and catastrophic damages occur.



Comparison of Washington's 174,433 Roadway Lane Miles and their Amount of Vehicle Travel

By Type of Roads
Source: 2007 DVMT Information, HPMS



Collision

The TDO collects and reports collision data for all public roads so that WSDOT, local agencies including Washington Traffic Safety Commission, Washington State Department of Licensing, Washington State Patrol, and local law enforcement agencies can develop programs and projects to reduce the occurrence and societal cost of collisions.

