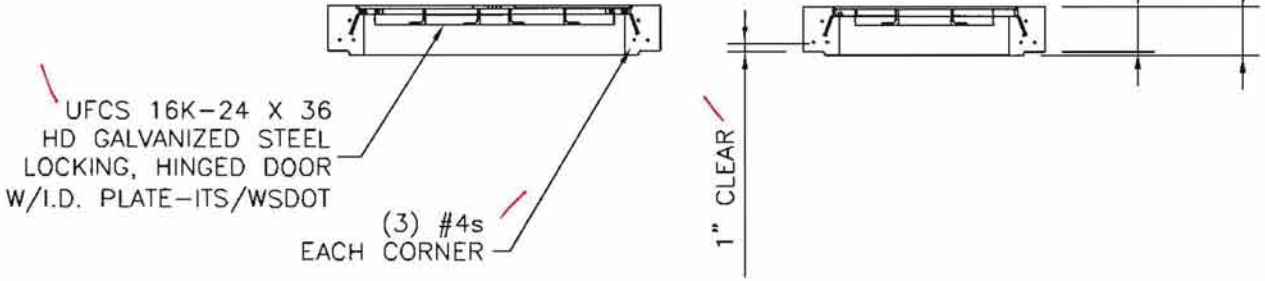


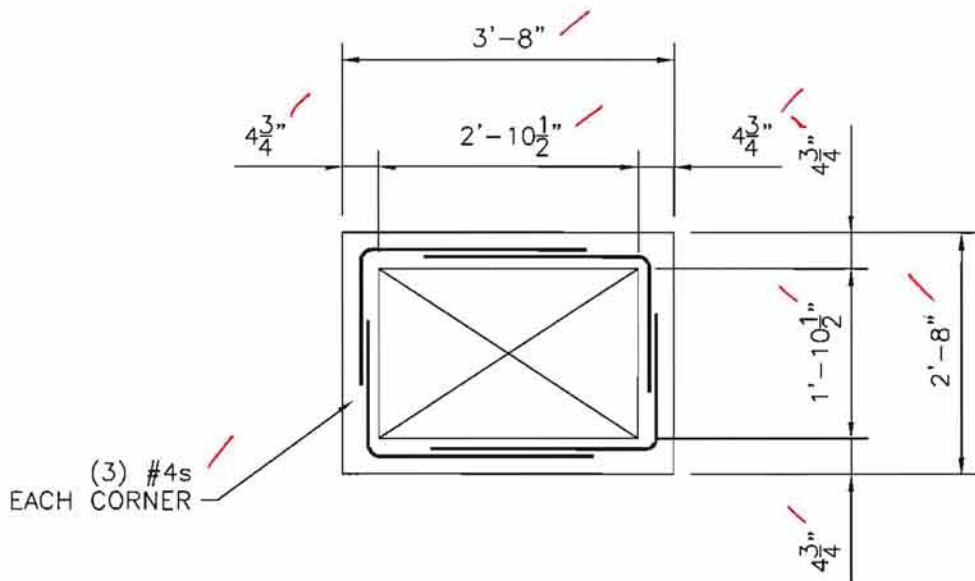
APPROVED

Washington State
 Department of Transportation
 HQ Traffic Operations Office
 DATE December 1, 2009 TAT



TOP SLAB SECTION

SCALE: 1/2" = 1'-0"

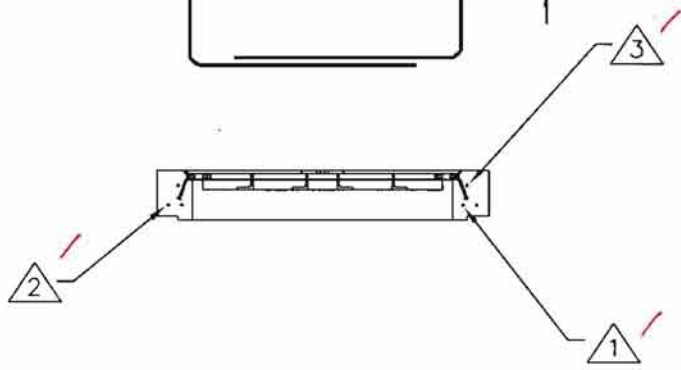
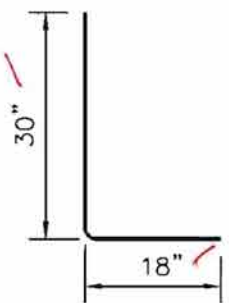
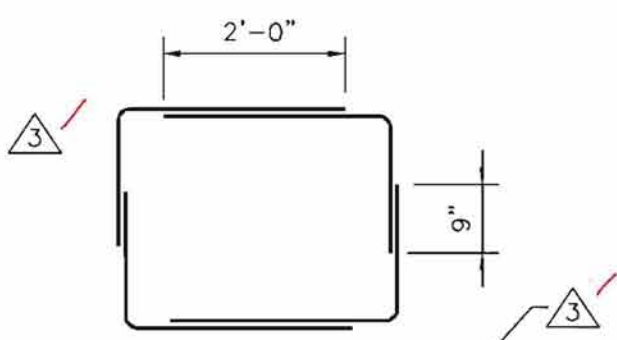
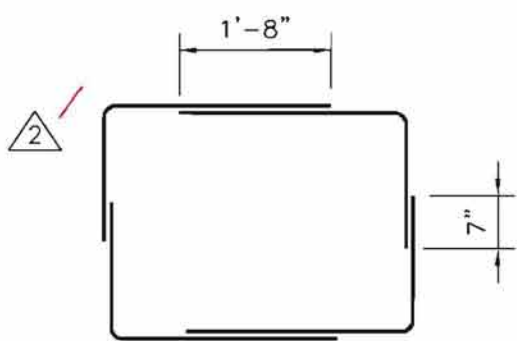
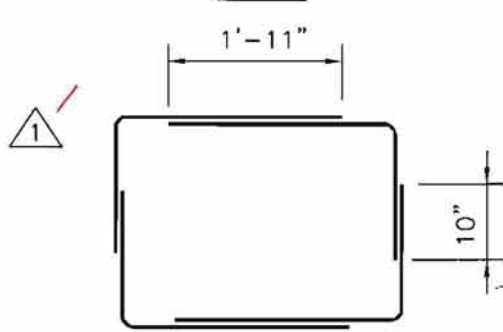


TOP SLAB PLAN

SCALE: 1/2" = 1'-0"

Hanson
 HEIDELBERG CEMENT Group
 4601 SOUTH ORCHARD
 TACOMA, WASHINGTON 98466
 (253) 475-8888
 FAX (253) 471-4747

WSDOT "ITS" STANDARD DUTY 233 J-15A PULL BOX LID			
REINFORCING			CONTRACTOR APPROVAL
		DRAWN TC	10-05-09
		CHECKED GS	10-05-09
			PBR1



#4 CORNER BAR   

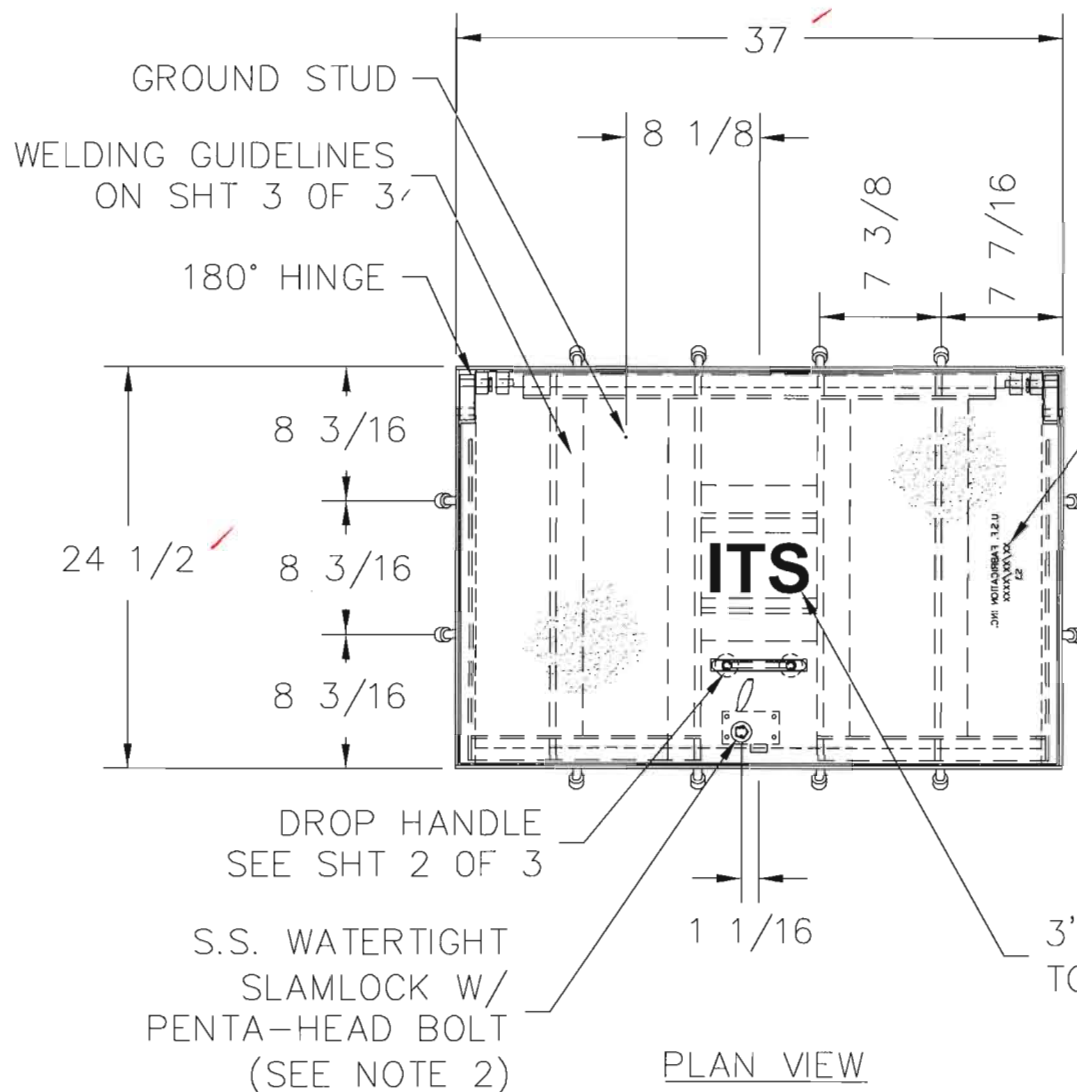
APPROVED

Washington State
 Department of Transportation
 HQ Traffic Operations Office
 DATE December 1, 2009 TAT



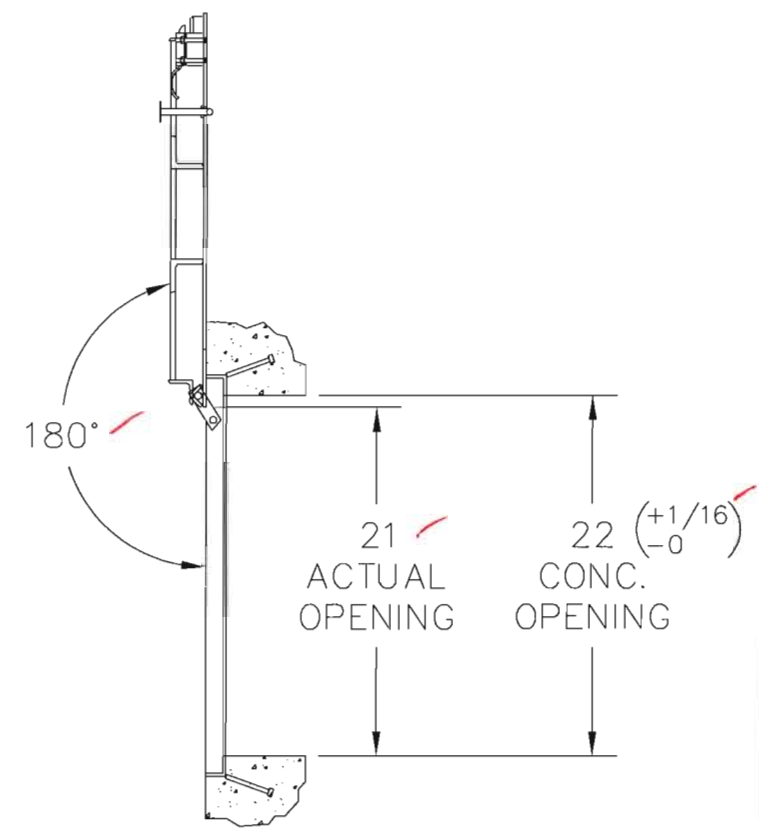
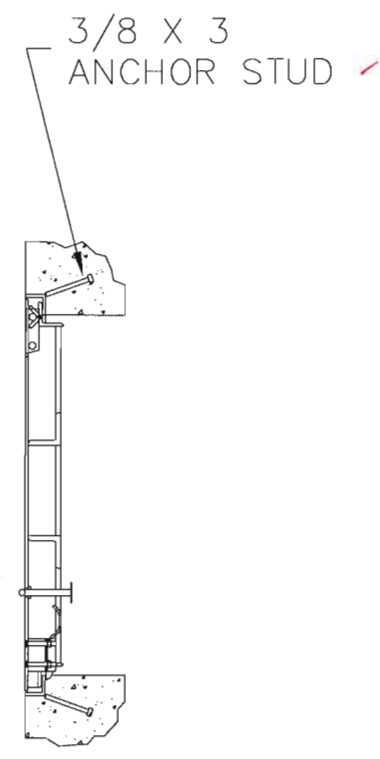
Hanson
 HEIDELBERG CEMENT Group
 4601 SOUTH ORCHARD
 TACOMA, WASHINGTON 98466
 (253) 475-8888
 FAX (253) 471-4747

WSDOT "ITS" STANDARD DUTY 233 J-15A PULL BOX LID			
REINFORCING			CONTRACTOR APPROVAL
		DRAWN TC	10-05-09
		CHECKED GS	10-05-09
			PBR2

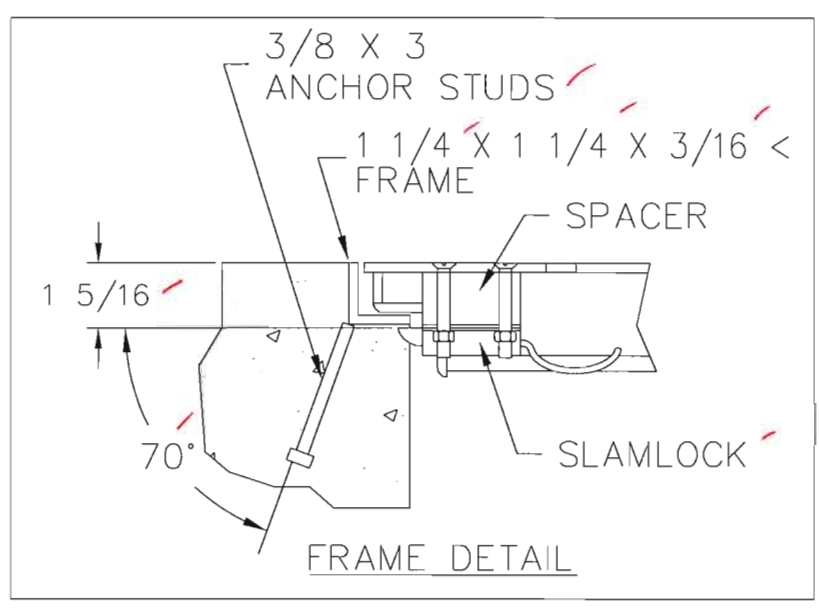
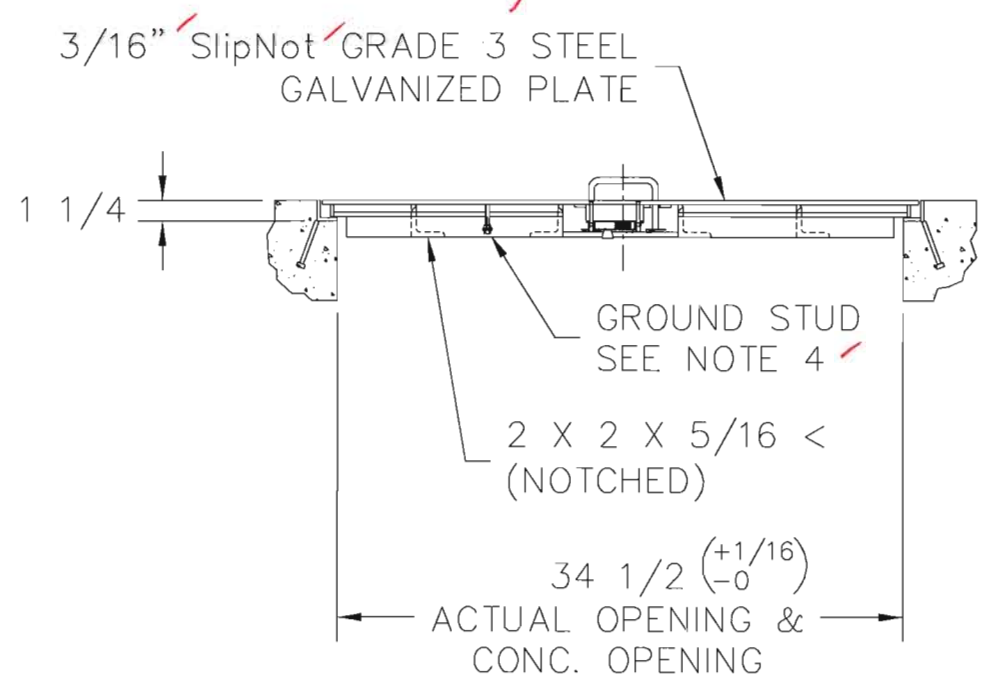


3/8 STAMPED LETTERING ON UNDERSIDE OF RIB (MANUFACTURER NAME & DATE & S3)

APPROVED AS NOTED
 Washington State
 Department of Transportation
 HQ Traffic Operations Office
 DATE February 17, 2011 TAT



Recess top of Penta-head bolt 1/8 inch minimum.



- NOTES:
- 1- MATERIAL: A36, STEEL HOT DIPPED GALVANIZED AFTER FABRICATION. (COVER PLATE IS SlipNot GRADE 3 GALVANIZED)
 - 2- 316 STAINLESS STEEL NUTS & BOLTS AND SLAMLOCK.
 - 3- APPROX. HATCH WEIGHT: 137 LBS.
 - 4- 1/4-20 UNC X 3/4 SS GROUND STUD W/ 2 SS NUTS AND 2 SS WASHERS ATTACHED & COATED WITH ANTI-SEIZE

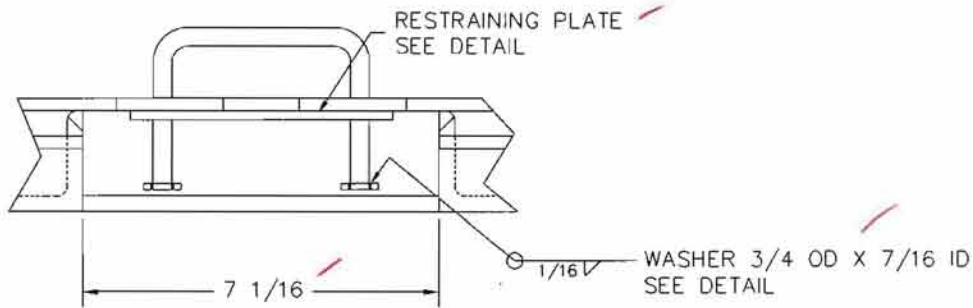
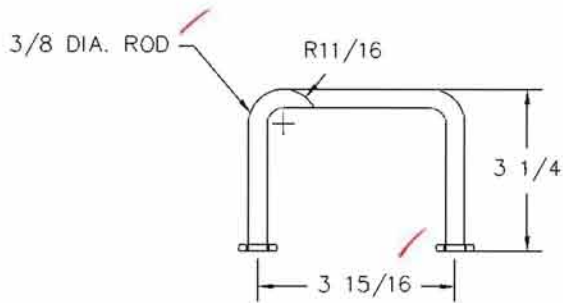
THIS DRAWING IS THE SOLE PROPERTY OF

U.S.F. FABRICATION INC.
 HIALEAH, FLORIDA

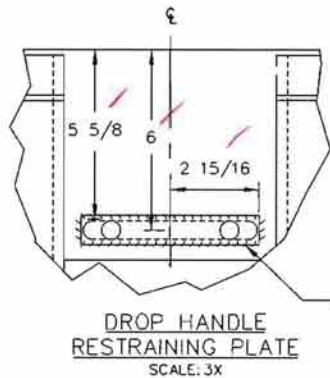
UFCS 16K - 24 X 36 - STEEL (GALV.) W/ SLIPNOT PLATE COVER, SLAMLOCK, 3" BEADED LETTERING & 180° HINGES

PUBLICATION AND DISTRIBUTION IN WHOLE OR IN PART IS EXPRESSLY PROHIBITED WITHOUT PRIOR WRITTEN CONSENT

DWN. BY: G.G.	SCALE: 1=12	QUOTE#	DATE: 2/3/11
CHK. BY:	DWG.# 65984	SHEET SIZE: B	SHEET NO: 1 of 5 REV:



DROP HANDLE DETAIL
SCALE: 3X

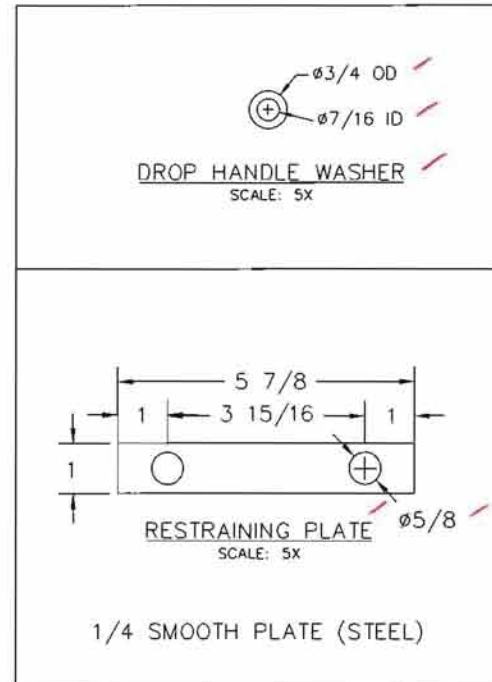


DROP HANDLE
RESTRAINING PLATE
SCALE: 3X

APPROVED

Washington State
Department of Transportation
HQ Traffic Operations Office

DATE December 1, 2009 TAT



DROP HANDLE WASHER
SCALE: 5X

RESTRAINING PLATE
SCALE: 5X

1/4 SMOOTH PLATE (STEEL)

U.S.F. FABRICATION INC.
HIALEAH, FLORIDA

UFCS 16K - 24 X 36 - STEEL
W/SLAMLOCK, I.D. PLATE, & 180° HINGES

DWN. BY: G.G.	SCALE: 1=12	QUOTE# 56753	DATE: 2 1/3/09
CHK. BY:	DWG NO: 56753-3	SHEET 2 of 3	REV:

