

WSDOT Aviation Monthly Report July 2009

[Community Leaders Endorse Methow's Preferred Alternative](#)

[WSDOT Reviews Conditional Use Permit](#)

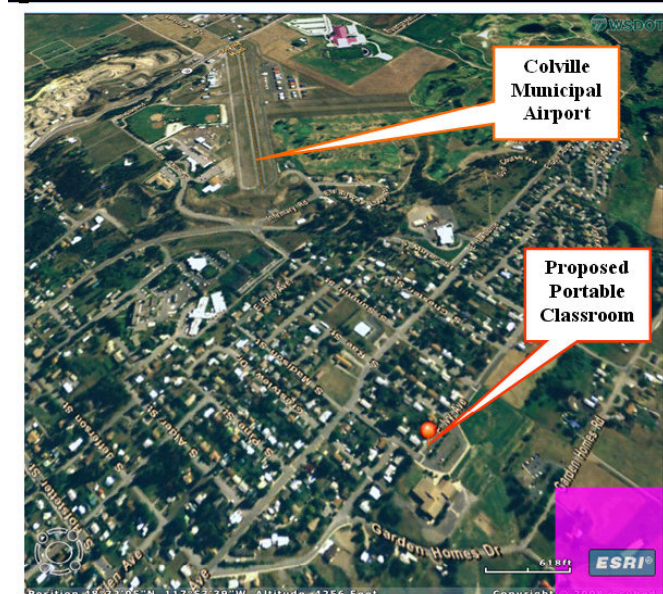
[WSDOT to Fund \\$900,000 in 2009 Airport Improvement Projects](#)

Community Leaders Endorse Methow's Preferred Alternative

As a result of recent discussions WSDOT has selected a preferred alternative for Methow's Airport Layout Plan that addresses most the community concerns. Of particular interest was the future impact of the airport on surrounding agricultural land. The final plan indicates all future development will be accommodated on existing airport property. A WSDOT press release was prepared to include quotes from Bud Hover, County Commissioner and Jason Paulsen, Director Methow Conservancy. These parties indicated support for the selected airport layout plan and value of the airport to the community. The county has agreed to work with state on Evans Road enhancements to address FAA safety concerns. Also, Craig Boesel, who farms adjacent land will be meeting with WSDOT to discuss a project that will bring an irrigation pipe across airport land.

WSDOT Reviews Conditional Use Permit

This week WSDOT Planner, Carter Timmerman, reviewed and commented on an application for a conditional use permit to allow for the placement of a portable classroom at Fort Colville School. The proposed portable classroom is 28' x 64' in length and, if approved, would be located within Colville Municipal Airport's influence area. In fact, the structure would be located within 2,405 feet of the airport's primary runway 01 /19. This would place the



structure beneath the traffic pattern and almost directly in the airport's approach. In the comment letter, WSDOT Aviation recognized the existing educational facility located on the parcel, but strongly recommended that the city practice a policy of do no more harm.

Schools, hospitals, nursing homes, assisted living facilities and other similar uses are at a greater risk during an aircraft accident due to the potential physical and mental limitations of the occupants. Most would agree that it is not in the interest of public health or safety to locate additional educational facilities in the approach to the airport.

WSDOT to Fund \$900,000 in 2009 Airport Improvement Projects

WSDOT Aviation is pleased to award \$900,000 in Local Airport Aid grant funds to 35 airports for 41 different projects. This is the first round of airport grants that WSDOT has awarded during the 2009 – 2011 biennium. Despite a significant projected decline in aviation revenues, WSDOT Aviation was able to use approximately \$288,682 to leverage \$11.2 million in federal funds, bringing the combined state, local and federal grand total to more than \$12.6 million.

Funding Breakdown

State: \$900,721

Federal: \$11,266,360

Local Match: \$464,467

Total: \$12,630,548

WSDOT awarded airport grants in the following areas:

- Pavement - 87 percent
- Safety - 9 percent
- Maintenance, Planning, and Other - 3 percent
- Security - .5 percent

Exact grant amounts are subject to change according to final project bid totals.

WSDOT's grant program is funded through an 11-cent-per gallon fee on aviation fuel, along with aircraft registration fees.

WSDOT anticipates awarding a similar amount during its second round of 2009-2011 Local Airport Aid grants in April 2010. The department will solicit applications for that round during February and March 2010.

A complete list of 2009-2011 projects is posted on WSDOT Aviation's Web site.