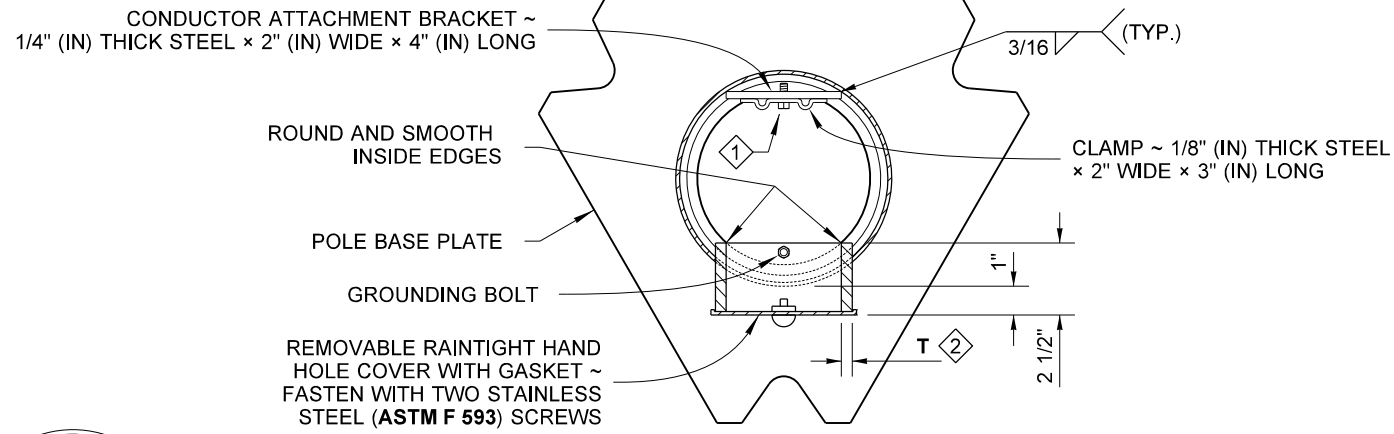


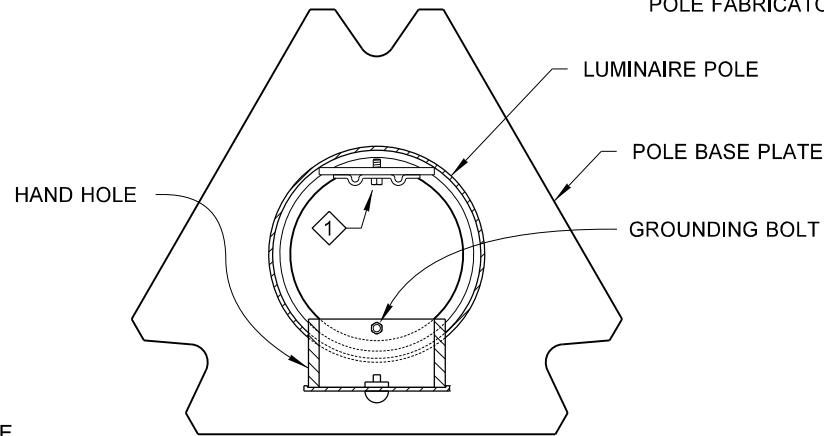
DRAWN BY: FERN LIDDELL



TYPICAL HAND HOLE ORIENTATION

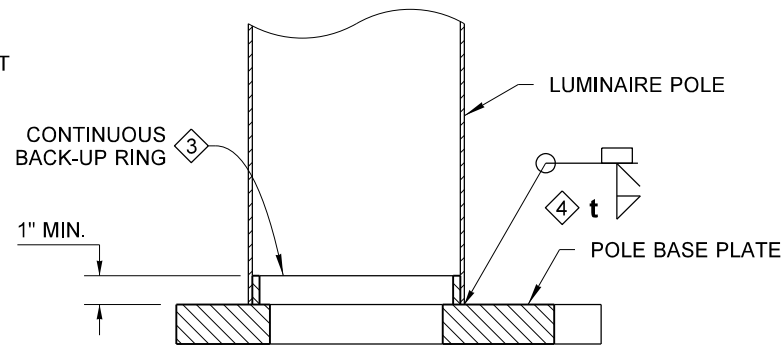
VIEW (A)

- 1 THE CONDUCTOR ATTACHMENT CONFIGURATIONS VARY AMONG DIFFERENT MANUFACTURERS. CONDUCTOR ATTACHMENTS ARE REQUIRED ON ALL POLES, FIXED OR SLIP BASE.
- 2 T = RIM PLATE THICKNESS BY LUMINAIRE POLE FABRICATOR.



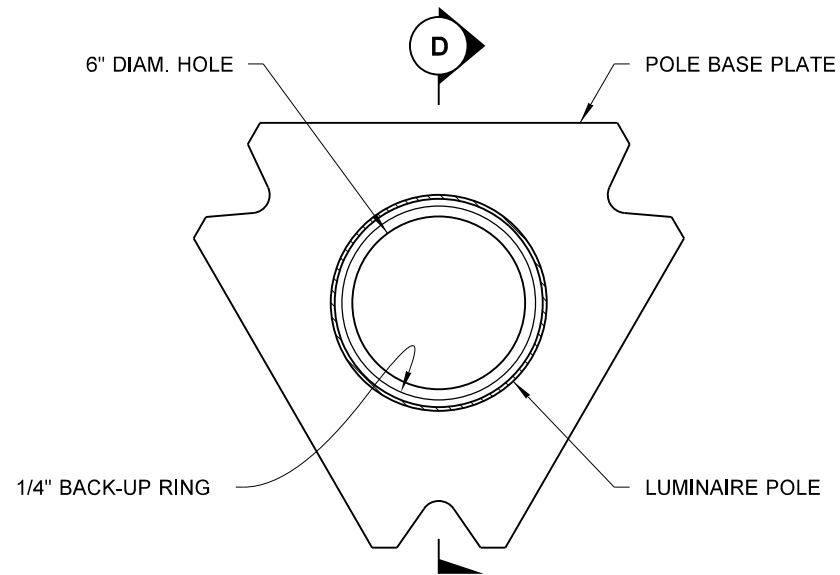
FOR DETAILS NOT SHOWN, SEE VIEW (A) ABOVE ORIENTATION FOR INSTALLATION ON BRIDGE OR RETAINING WALL ~ SEE STANDARD PLAN J-28.45

VIEW (B)

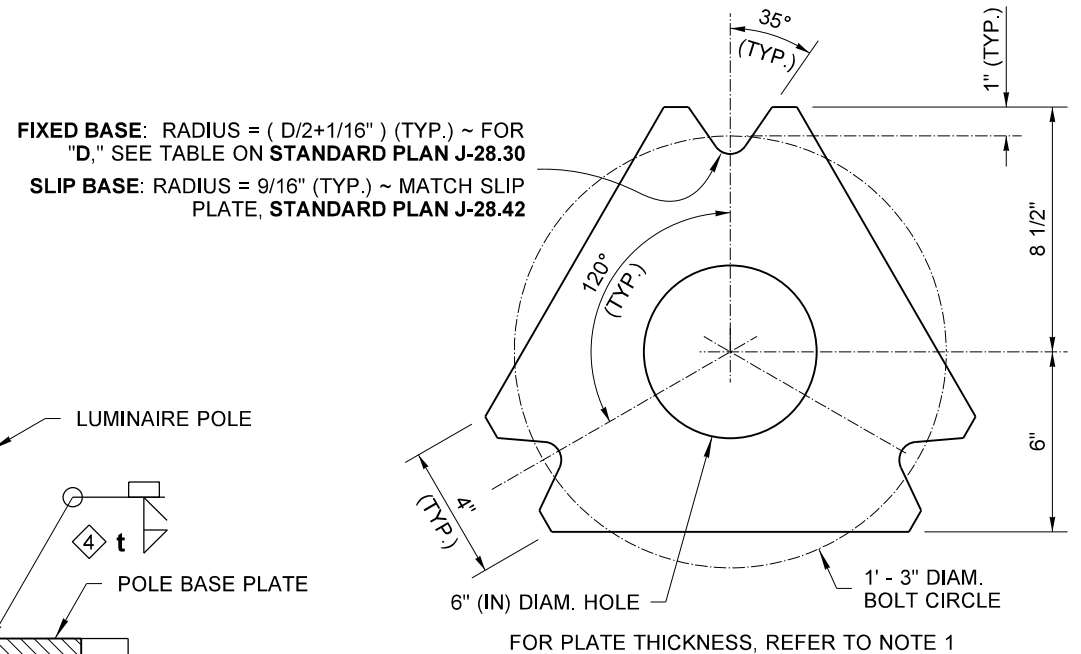


- 3 1/4" (IN) THICK, OR NO THINNER THAN POLE WALL THICKNESS. TACK WELD IN ROOT OR CONTINUOUS SEAL WELD TO BASE PLATE OR POLE WALL.
- 4 t = SIZE OF FILLET WELD BY LUMINAIRE POLE FABRICATOR.

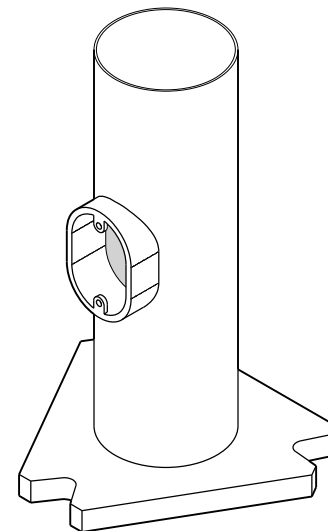
SECTION (D)



VIEW (C)



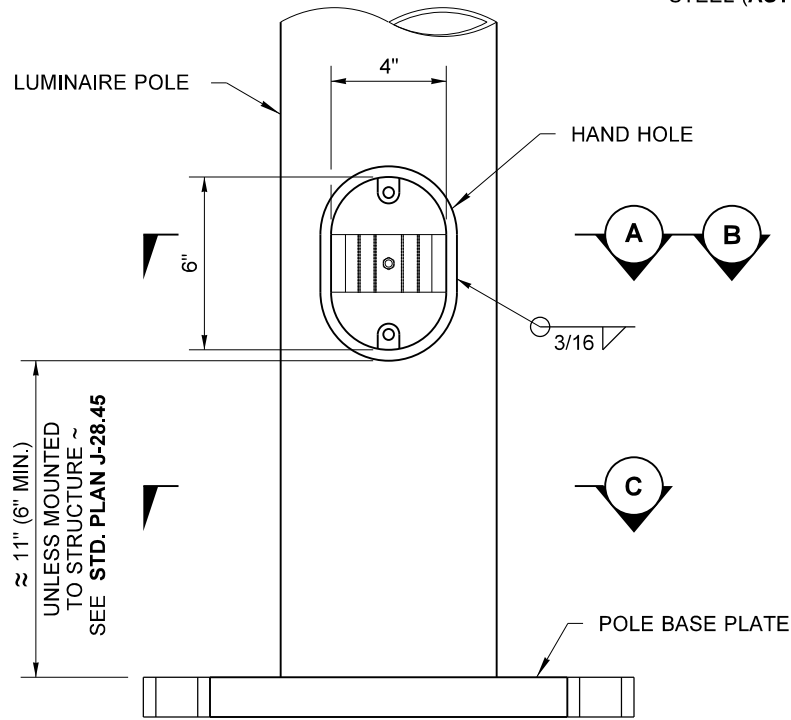
TOP VIEW
POLE BASE PLATE DETAIL



ISOMETRIC VIEW

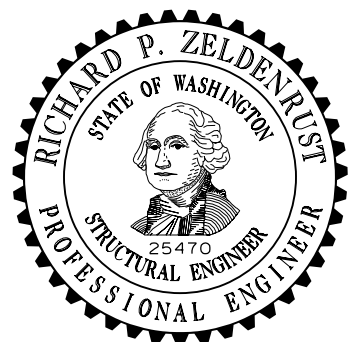
NOTES

- Pole Base Plate for a Slip Base design shall be 1 1/4" (in) steel manufactured from **ASTM A572 GR.50** or **ASTM A588**. Pole Base Plate for a Fixed Base design shall be either 1 1/4" (in) steel manufactured from **ASTM A572 GR. 50, ASTM A588**, or 1 1/2" (in) manufactured from **ASTM A36**. All Pole Base Plate notched surfaces shall be finished smooth.
- Round and smooth all edges along wire-way to protect conductors. See **Standard Plan J-28.70** for wiring details.
- Galvanizing shall be in accordance with **AASHTO M 111**.
- See **Standard Plans C-8b, C-85.14, and J-28.60** for foundation and base plate requirements when steel light standards are mounted on concrete traffic barrier.
- See **Standard Plan J-28.42** for details when Slip Base is required.



(COVER NOT SHOWN FOR CLARITY)
ELEVATION VIEW

CONFIGURATION AND LOCATION OF THE HAND HOLE VARIES AMONG MANUFACTURERS ~ MINIMUM SIZE OPENING SHOWN



**STEEL LIGHT STANDARD
POLE BASE AND
HAND HOLE DETAILS
STANDARD PLAN J-28.50-03**

SHEET 1 OF 1 SHEET

APPROVED FOR PUBLICATION

STATE DESIGN ENGINEER
Washington State Department of Transportation