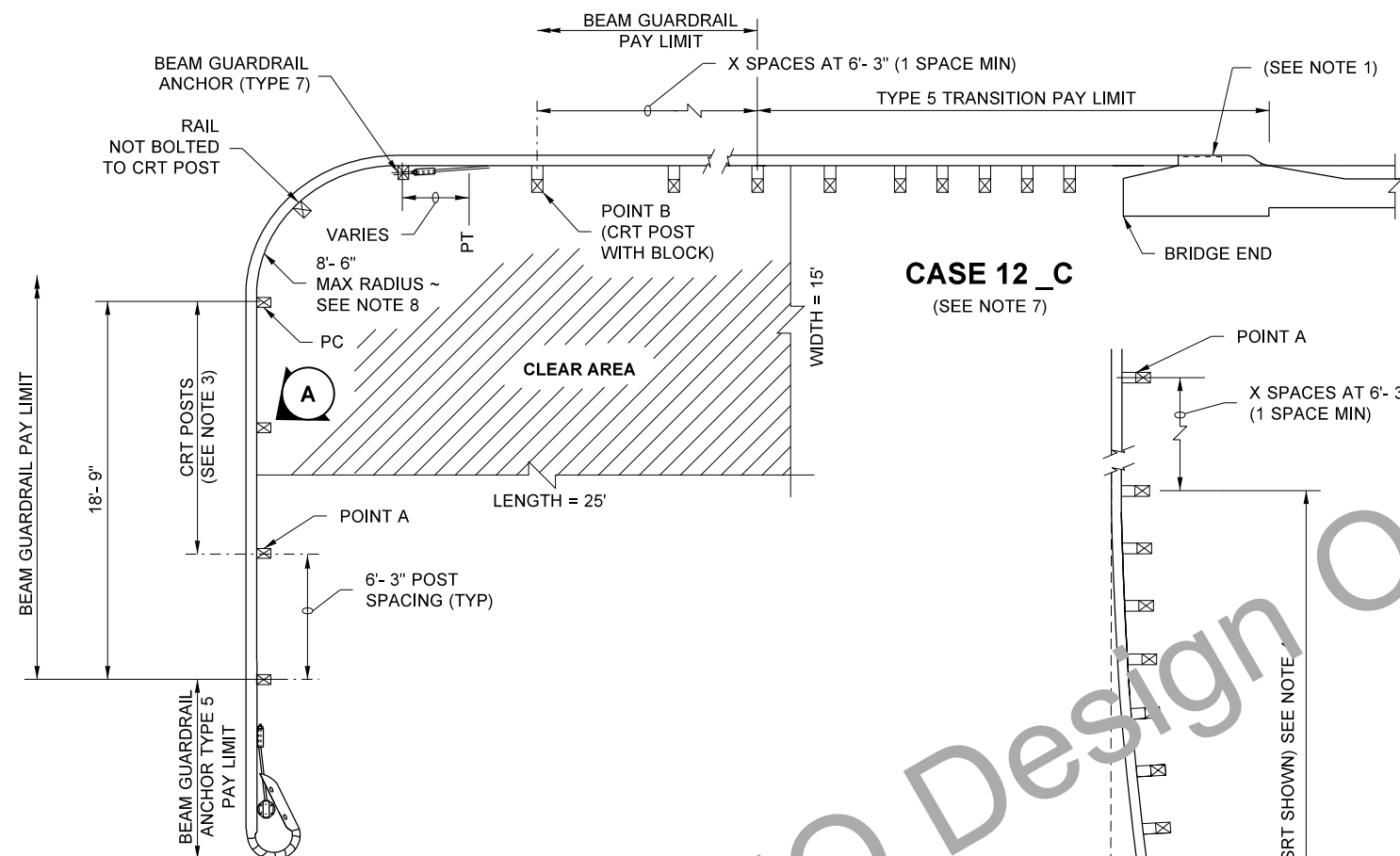
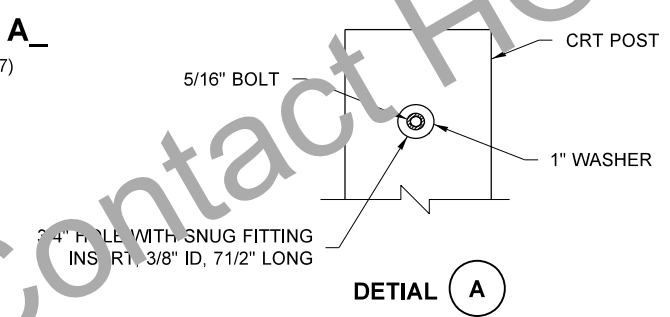


CASE 12_D
(SEE NOTE 7)

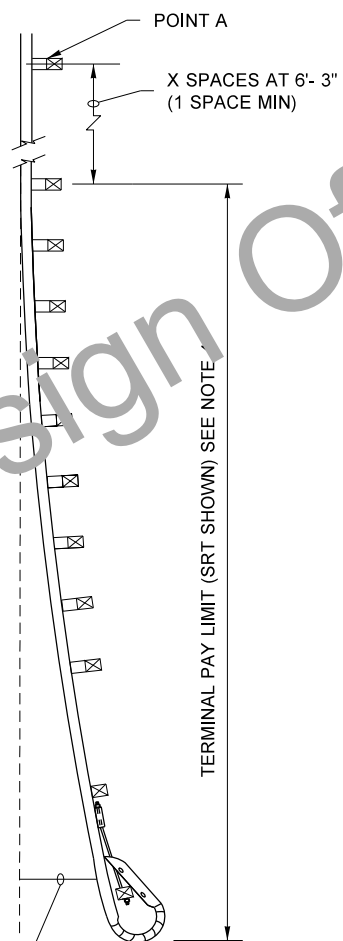


CASE 12_C
(SEE NOTE 7)

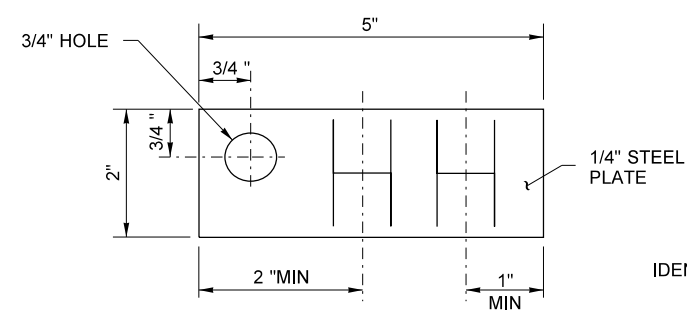
CASE 12 A_
(SEE NOTE 7)



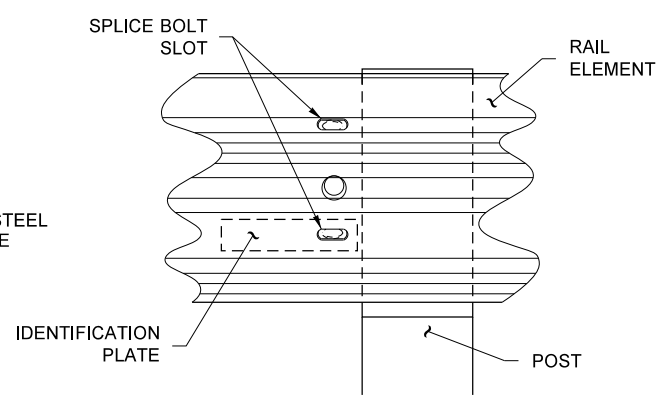
DETAIL A



CASE 12 B_
(SEE NOTE 7)



IDENTIFICATION PLATE
(SEE NOTE 5)



IDENTIFICATION PLATE MOUNTING DETAIL
(SEE NOTE 6)

NOTES

- SEE CONTRACT FOR GUARDRAIL CONNECTION TO BRIDGE RAIL AND CONCRETE BARRIER.
- THE SLOPE FROM THE EDGE OF THE SHOULDER INTO THE FACE OF THE GUARDRAIL SHOULD NOT BE STEEPER THAN 10H : 1V.
- ATTACH TO RAIL WITH 5/8" X 9" LONG BOLT, NUT AND 1 1/2" WASHER ON BACK OF POST.
- FOR TERMINAL TYPE AND DETAILS, SEE CONTRACT AND APPLICABLE PLAN(S).
- RADIUS DIMENSIONS SHALL BE ETCHED INTO PLATE REPLACING THE LETTERS "HF" SHOWN ON THE IDENTIFICATION PLATE. DETAIL DIGITS SHALL BE 1 1/2" MIN HEIGHT AND 3/4" MAX WIDTH. THE PLATE SHALL BE GALVANIZED AFTER ETCHING.
- THE GUARDRAIL RADIUS IDENTIFICATION PLATE SHALL BE MOUNTED ON THE BACK SIDE OF THE RAIL ELEMENT USING THE LOWEST SPLICE BOLT AT THE P.C. OF THE GUARDRAIL RADIUS.
- FIRST LETTER OF CASE DESIGNATION PLACEMENT INDICATES END TREATMENT ON SIDE ROAD. SECOND LETTER INDICATES END TREATMENT ON MAIN ROAD. FOR INSTANCE, A TYPE 5 ANCHOR ON THE SIDE ROAD AND A BRIDGE CONNECTION ON THE MAIN ROAD WOULD BE CASE 12 AC.
- FOR THE 8' - 6" RADIUS, FIVE CRT POSTS ARE REQUIRED INCLUDING THE CRT POST AT POINT B.
- FOR CRT POST DETAILS, SEE **STANDARD PLAN C-1b**.

**TYPE 1 GUARDRAIL PLACEMENT ~ WEAK POST INTERSECTION DESIGN
(8' - 6" MAX RADIUS)**

FILE NAME: S:\Design R P& S\4-Standards\2-Plan Sheet Library\01-Published PSL\TB Traffic Barrier(TB-C series) plans converted\TB-c2f\TB-c2f.dgn		REGION NO. STATE		FED.AID PROJ.NO.		DATE		DATE		Plot 1	
TIME: 9:24:10 AM		10	WASH							PLAN REF NO TB-C2f	
DATE: 8/30/2018										SHEET 1 OF 1 SHEETS	
PLOTTED BY: liddelf											
DESIGNED BY:											
ENTERED BY:											
CHECKED BY:											
PROJ. ENGR.:											
REGIONAL ADM.:		REVISION		DATE	BY						

